

Lahti

Building knowledge as a community

Planning the sustainable city together with the people

17.4.2023 Participatory Planning Course, Aalto

Johanna Palomäki, City Architect

Lahti quick facts

European Green Capital 2021
Carbon neutral 2025

9th largest city

50 minutes from Helsinki

200 000 people in Lahti region

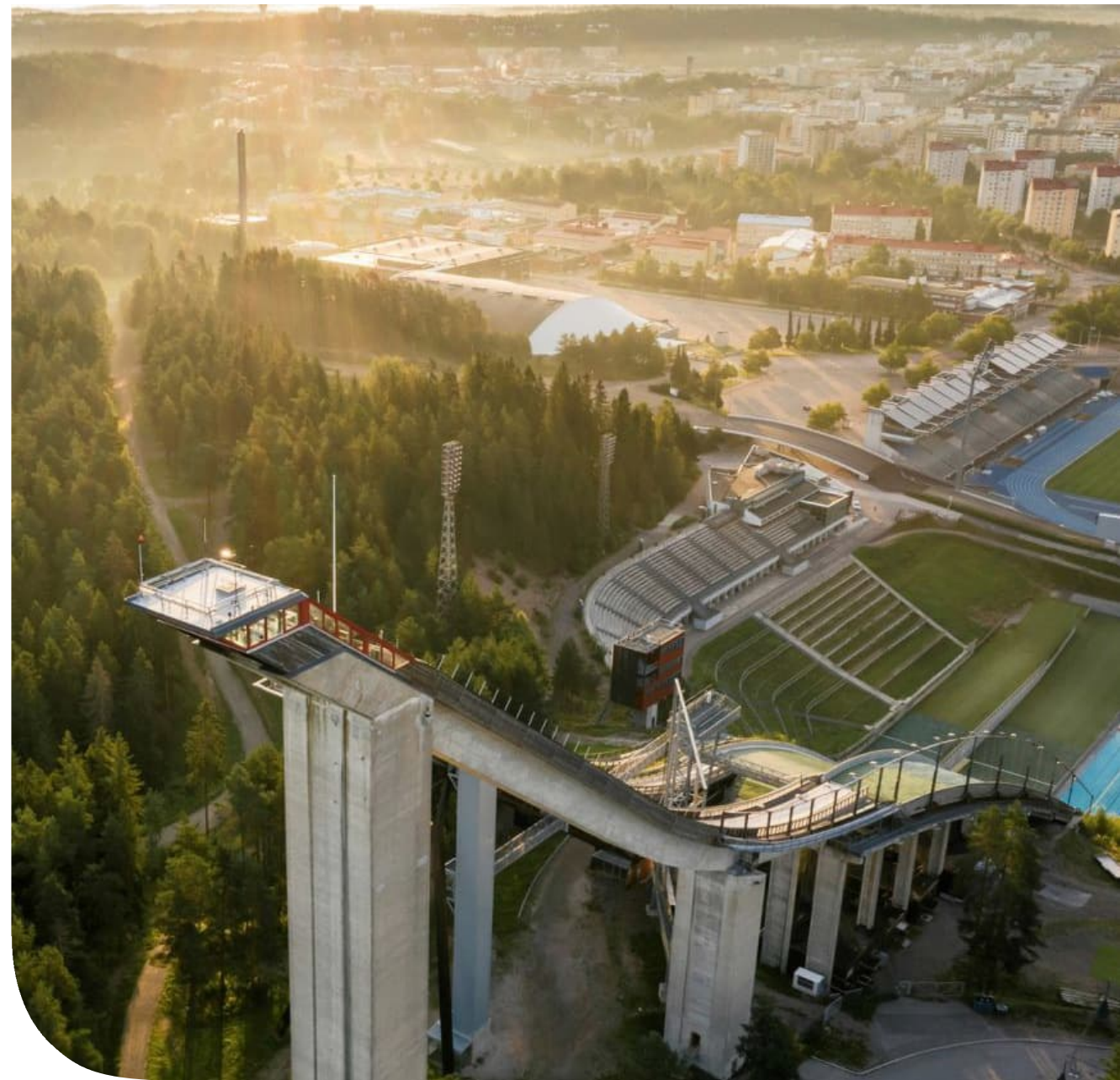
8500 companies

80 % of population in urbanized areas

70 % of residents live within 5 km from the urban core

52 lakes

180 km skiing trails





1

WHY should we arrange public participation

2

HOW it is done at the City of Lahti

3

WHAT are some outcomes

... and a peek at Espoo too.

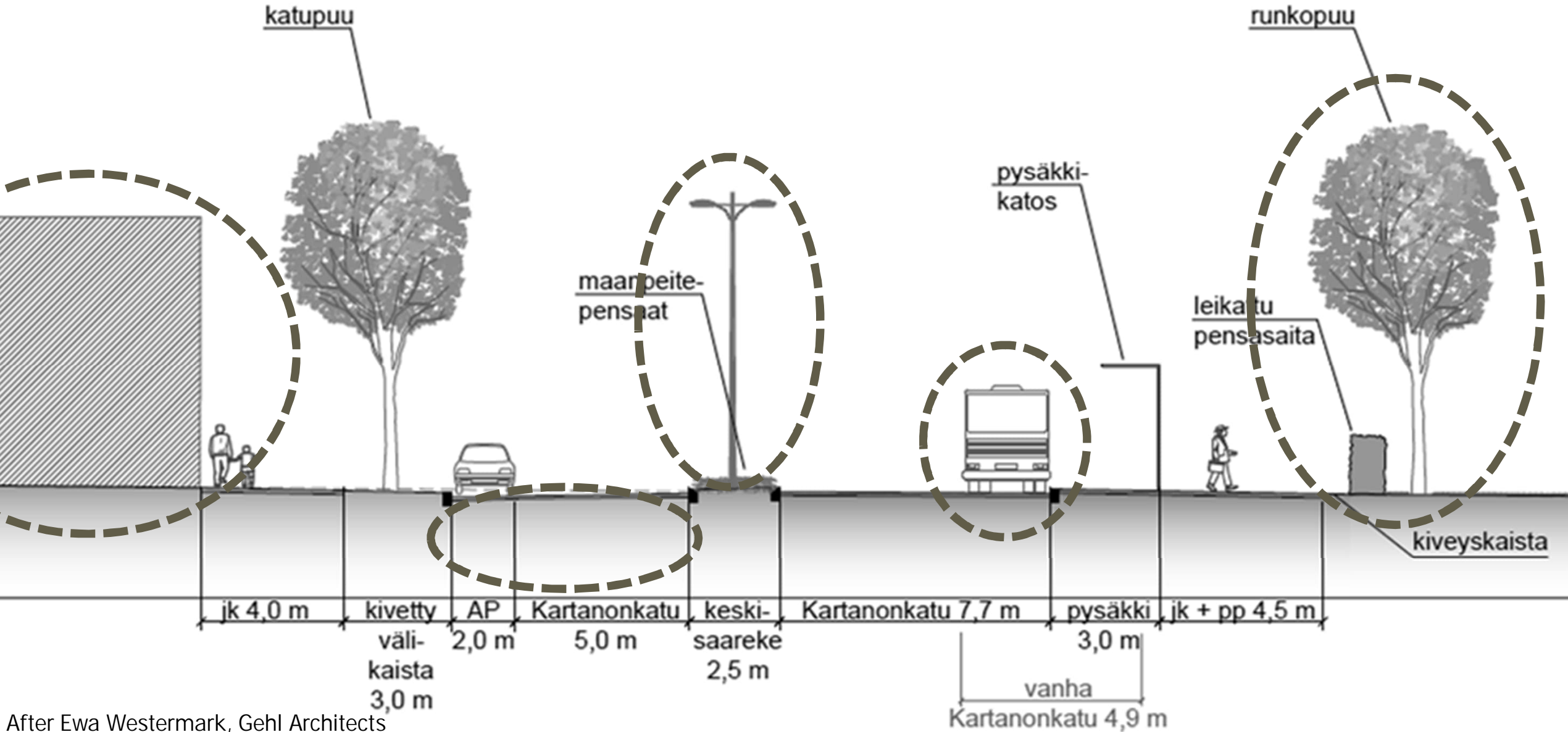
1. Why?

For 5 minutes, think about 2-3 good reasons to engage people in the planning of the city's future.

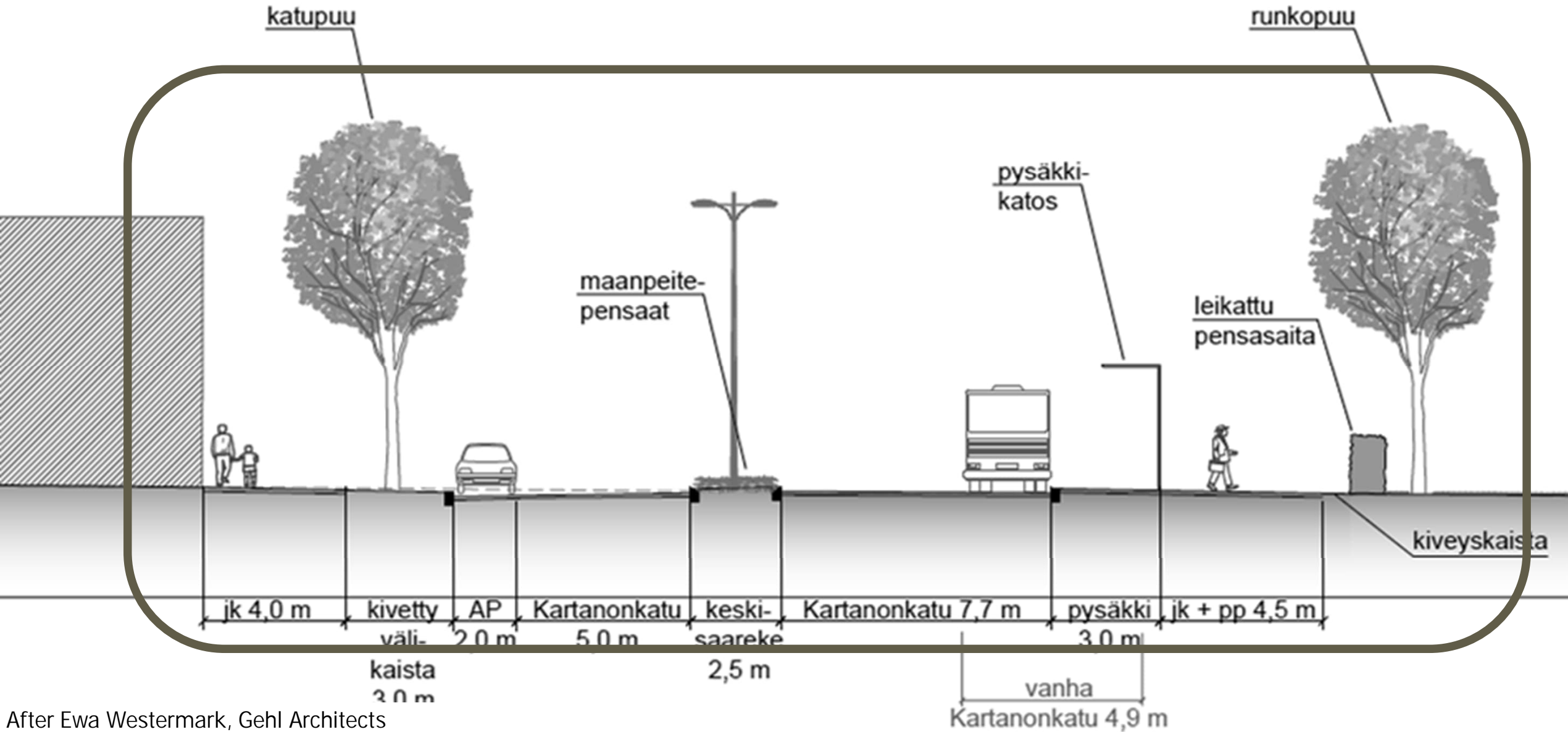
"Planning is a hopelessly complex *human* endeavor. It involves actions taken by *some* to affect the use of land controlled by *others*, following decisions taken by *third parties* based on values not shared by *all concerned*, regarding issues *no one* fully comprehends, in an attempt to guide events and processes that very likely will not unfold in the time, place and manner anticipated."

(Couclelis 2005, 1355)

From silos...



... to holistic planning



A dense forest of tall, thin trees, likely pines or spruces, with a yellow crane visible in the background. The text is overlaid on the image.

The big picture Shared consciousness

McChrystal (2015)

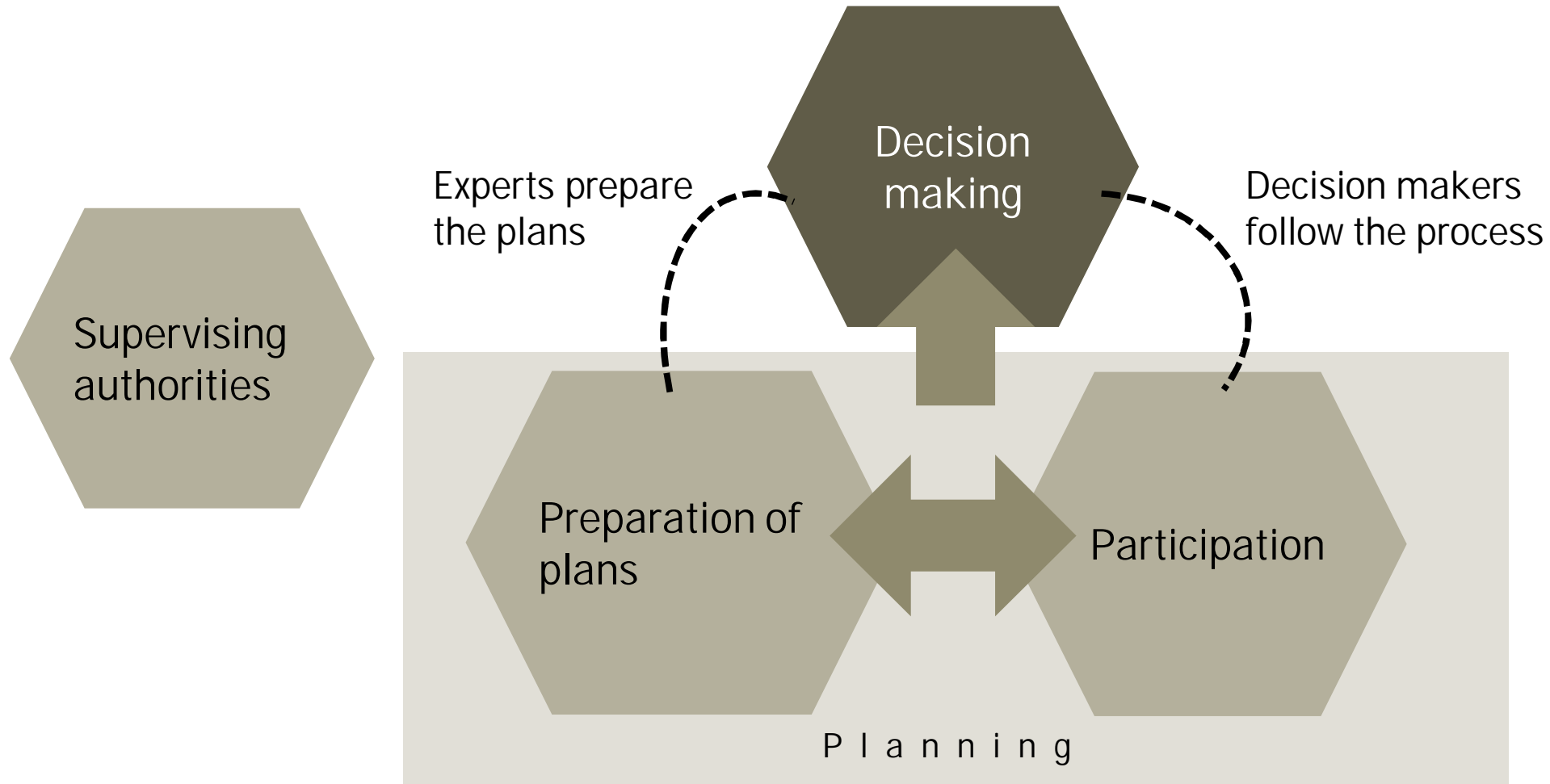
The physical environment is the foundation of well-being.



2. How?



Preparing plans, participation and decision making





We build knowledge

learning together

<http://www.kaupunkipeli.fi/>

Lahti

*When we build knowledge, we think
beforehand how it can be used in planning*





*Arranging participation
takes resources and time
but pays off.*

"My Lahti" participation brand

The service promise

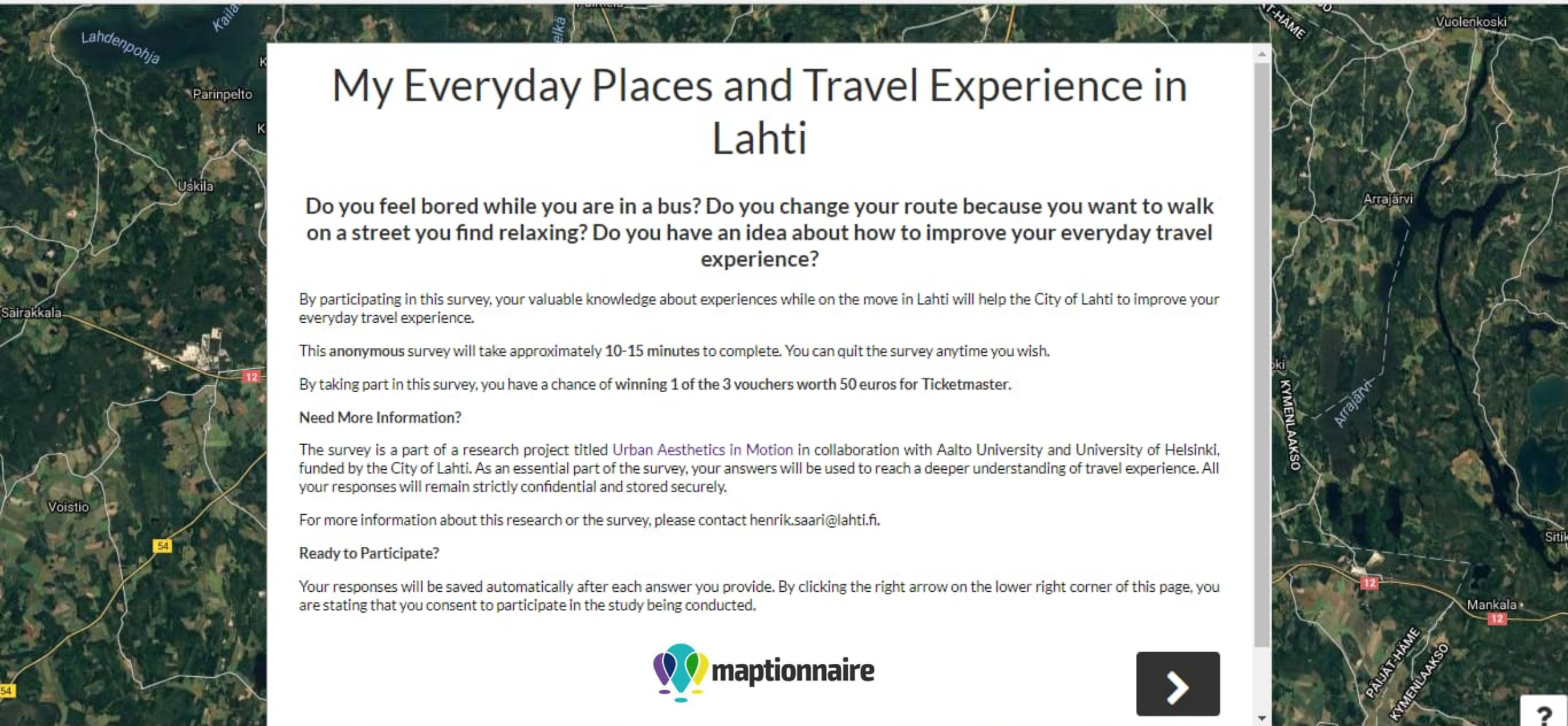
The City of Lahti promises that the knowledge built in collaboration with citizens will be carefully analyzed, stored and made accessible for various planning purposes.



Gathering place-based knowledge about people's everyday places and mobility

Early stage participation





My Everyday Places and Travel Experience in Lahti

Do you feel bored while you are in a bus? Do you change your route because you want to walk on a street you find relaxing? Do you have an idea about how to improve your everyday travel experience?

By participating in this survey, your valuable knowledge about experiences while on the move in Lahti will help the City of Lahti to improve your everyday travel experience.

This anonymous survey will take approximately 10-15 minutes to complete. You can quit the survey anytime you wish.

By taking part in this survey, you have a chance of winning 1 of the 3 vouchers worth 50 euros for Ticketmaster.

Need More Information?

The survey is a part of a research project titled *Urban Aesthetics in Motion* in collaboration with Aalto University and University of Helsinki, funded by the City of Lahti. As an essential part of the survey, your answers will be used to reach a deeper understanding of travel experience. All your responses will remain strictly confidential and stored securely.

For more information about this research or the survey, please contact henrik.saari@lahti.fi.

Ready to Participate?

Your responses will be saved automatically after each answer you provide. By clicking the right arrow on the lower right corner of this page, you are stating that you consent to participate in the study being conducted.





My routes in Lahti

How do you evaluate your overall travel experiences along the route?

The trips work poorly, are of low standard and worst imaginable. The trips work well, are of high standard and best imaginable.

I feel very bored, fed up and tired. I feel very enthusiastic, alert and engaged.

I feel very stressed, worried and hurried. I feel very relaxed, confident and calm.

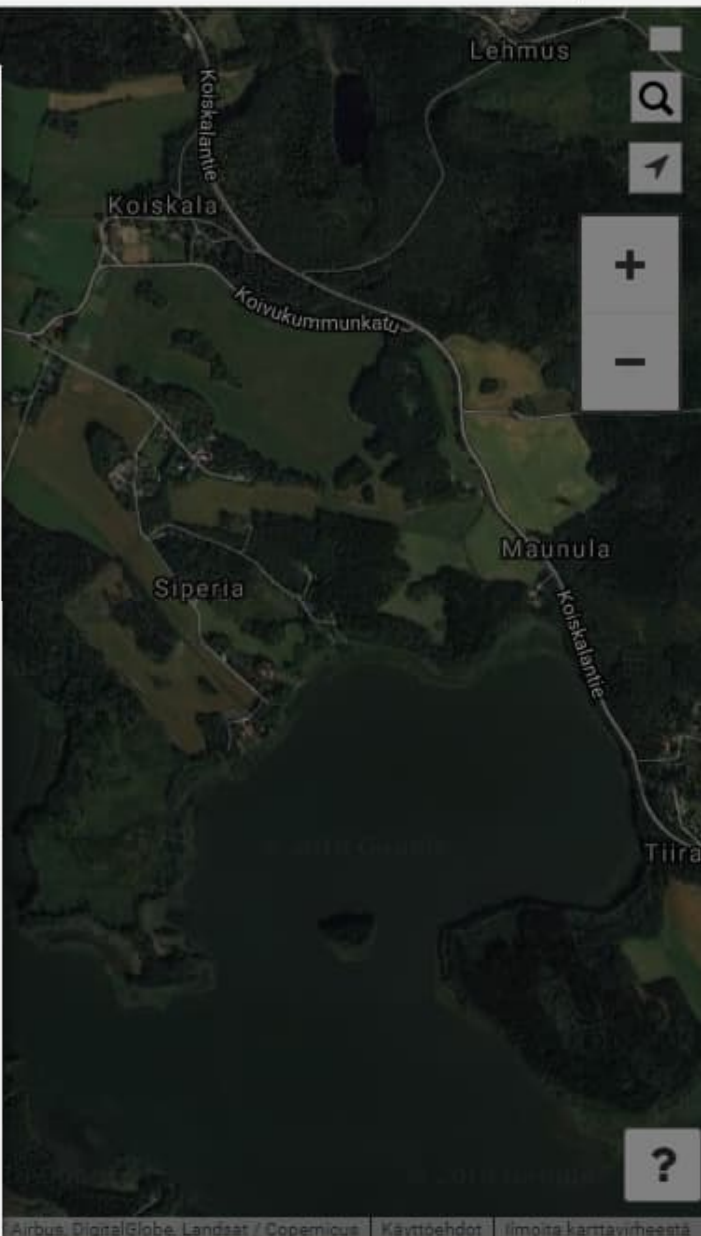
What is the purpose of the route?

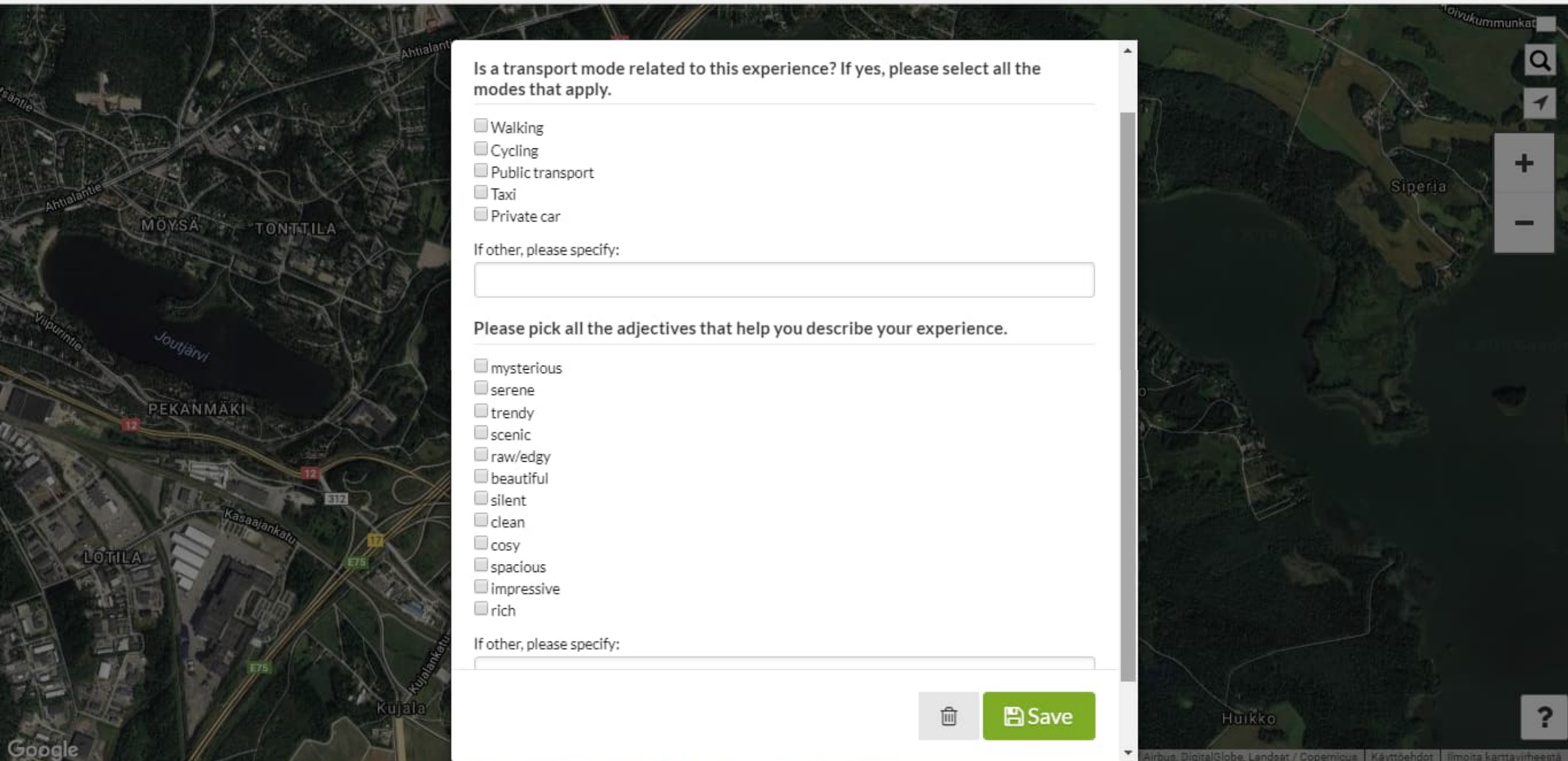
- Commuting or business-related
- Going to school or a study-related event
- Running daily errands (e.g. going to the post office)
- Shopping
- A social visit or leisurely activity

If other, please specify:

Which transport mode do you use for this route? (Please choose all the applicable ones.)

- Walking
- Cycling





Is a transport mode related to this experience? If yes, please select all the modes that apply.

- Walking
- Cycling
- Public transport
- Taxi
- Private car

If other, please specify:

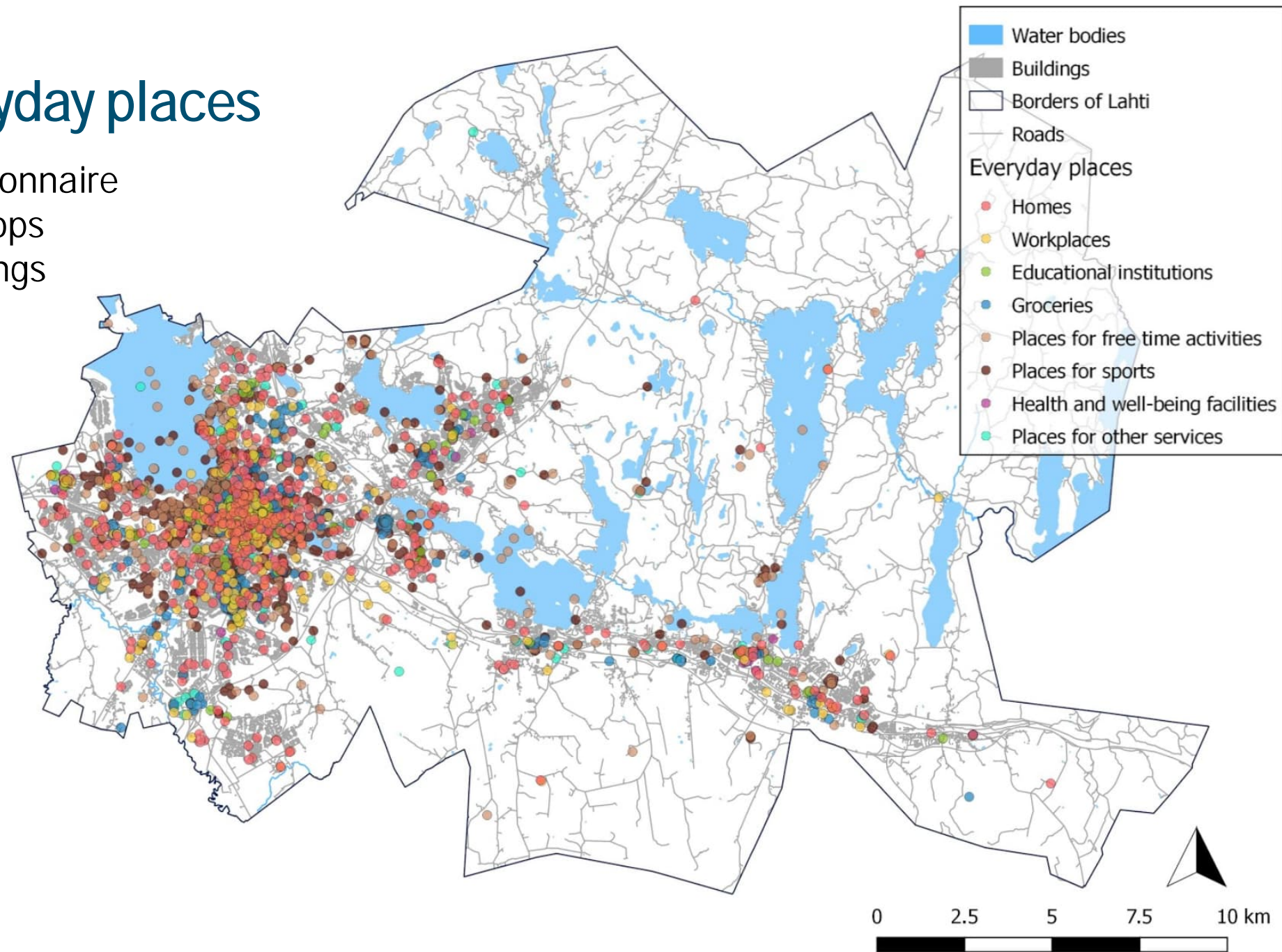
Please pick all the adjectives that help you describe your experience.

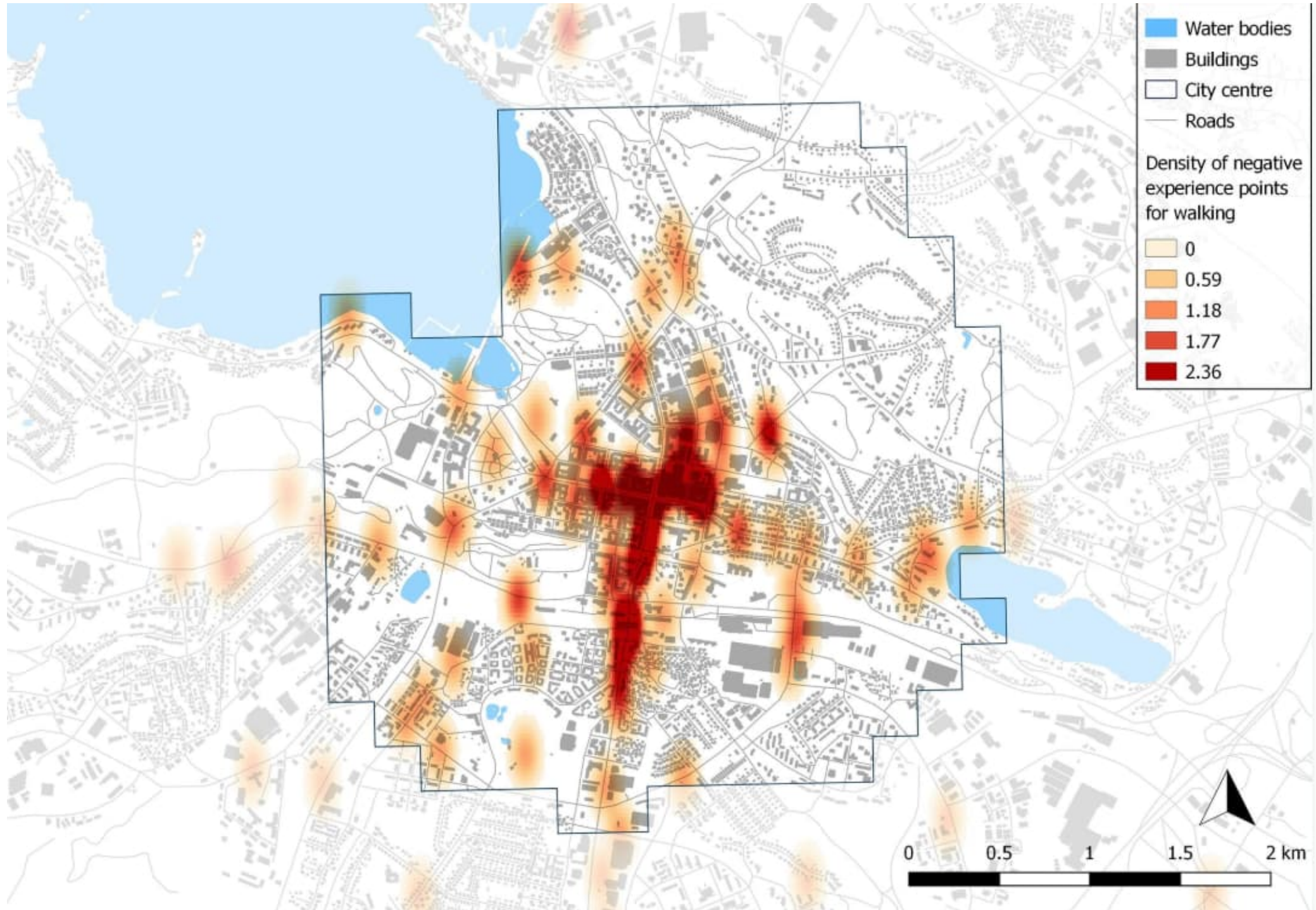
- mysterious
- serene
- trendy
- scenic
- raw/edgy
- beautiful
- silent
- clean
- cosy
- spacious
- impressive
- rich

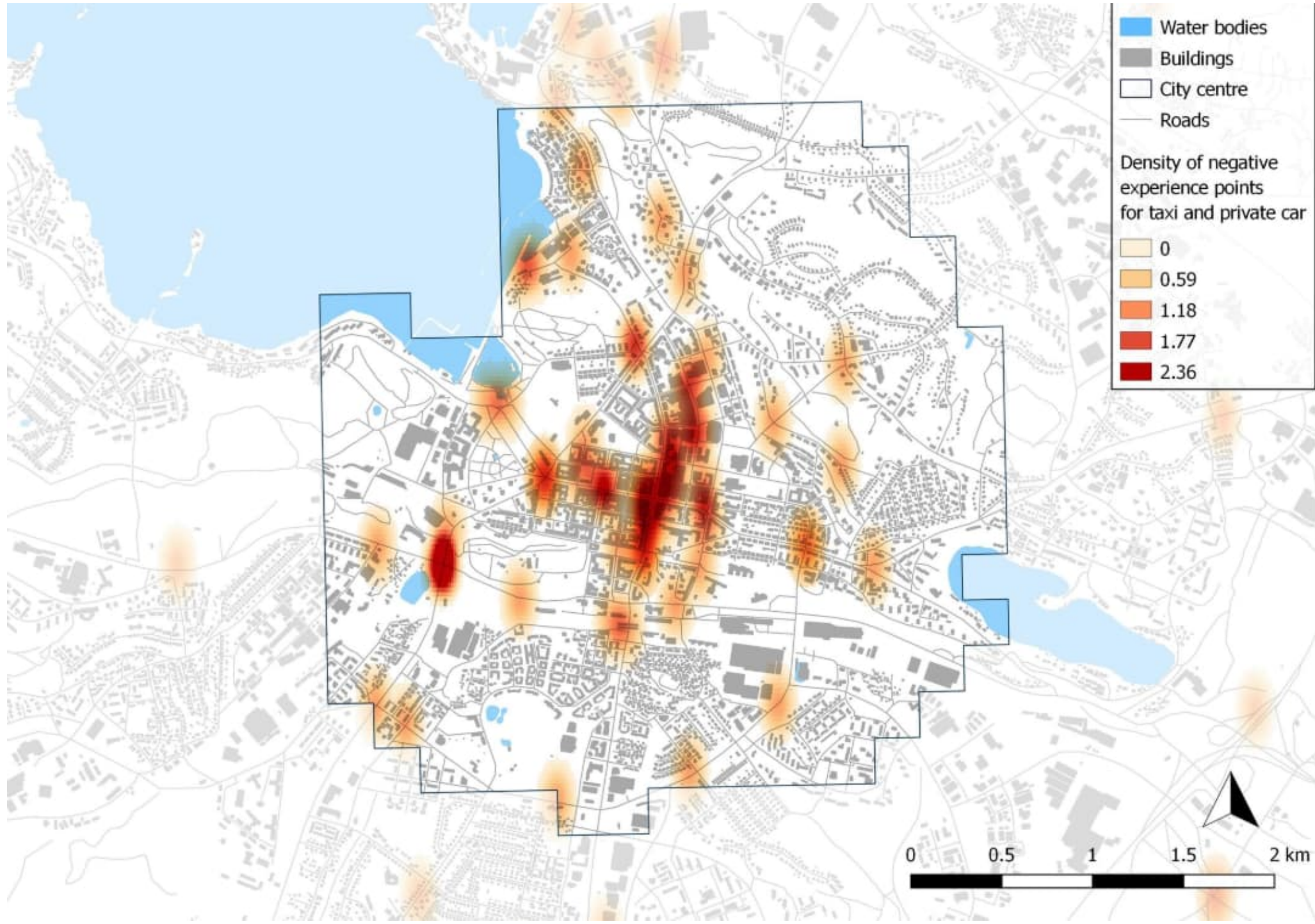
If other, please specify:

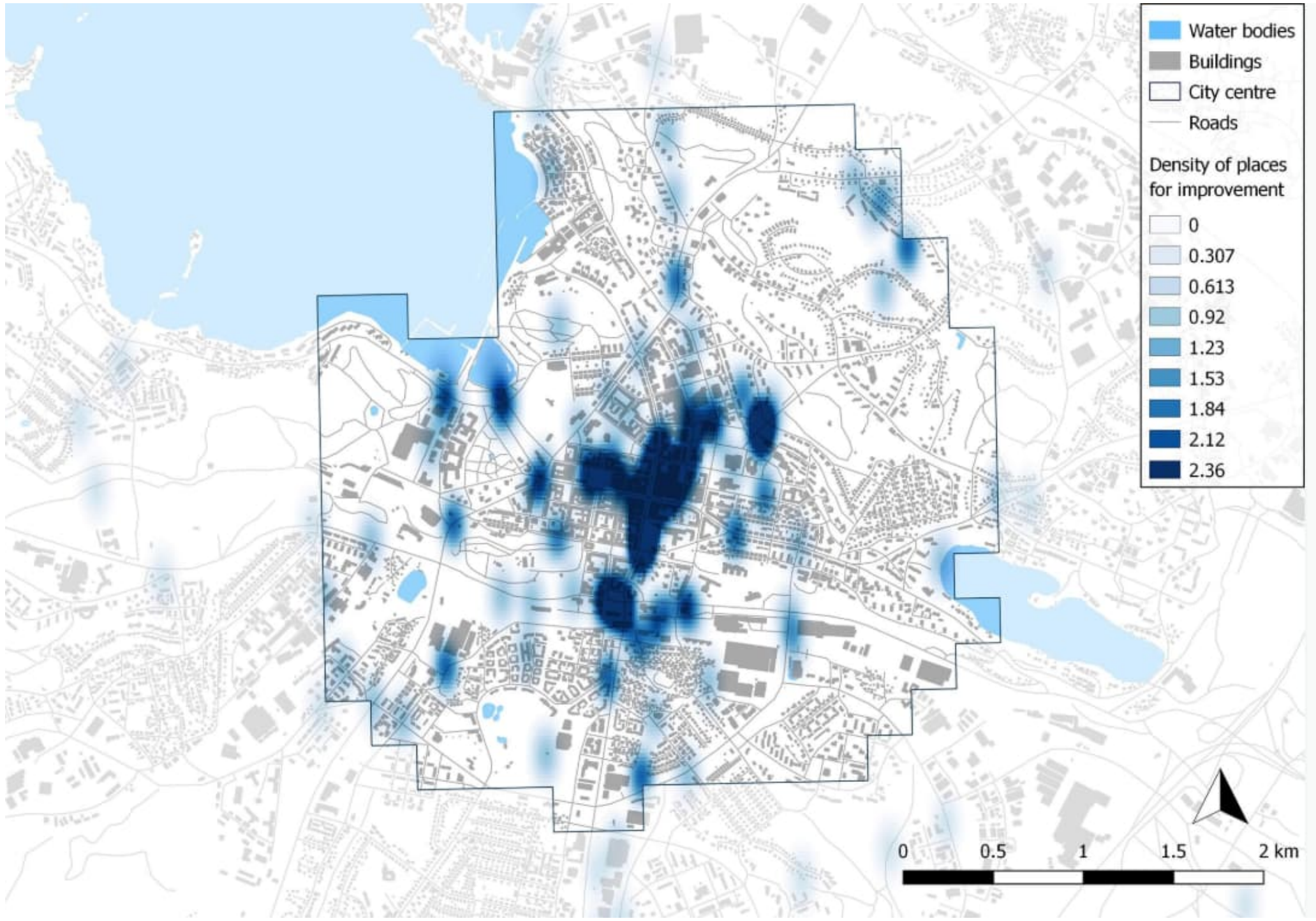
All mapped everyday places

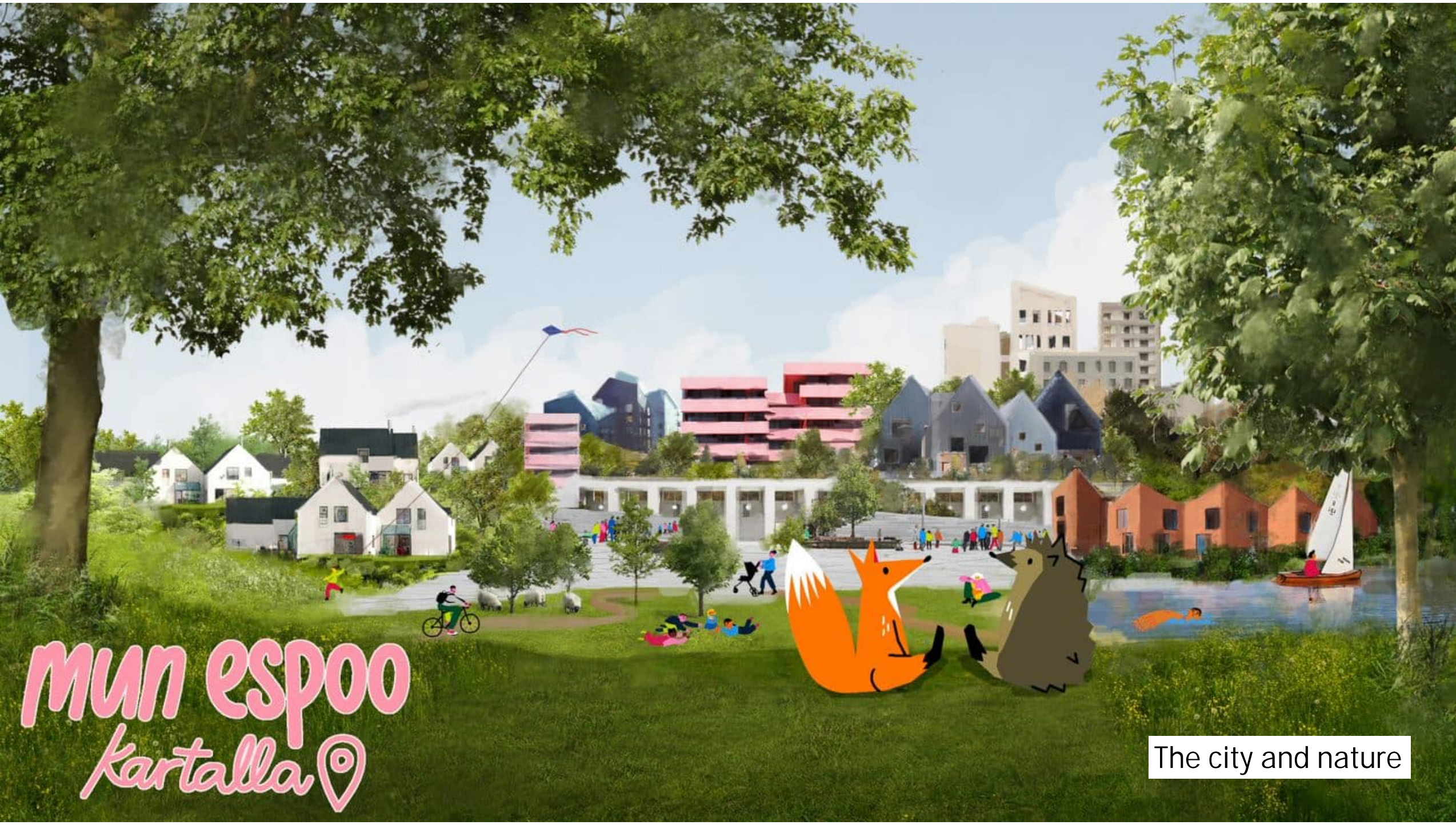
570 responses to questionnaire
300+ visitors to workshops
About 6500 map markings







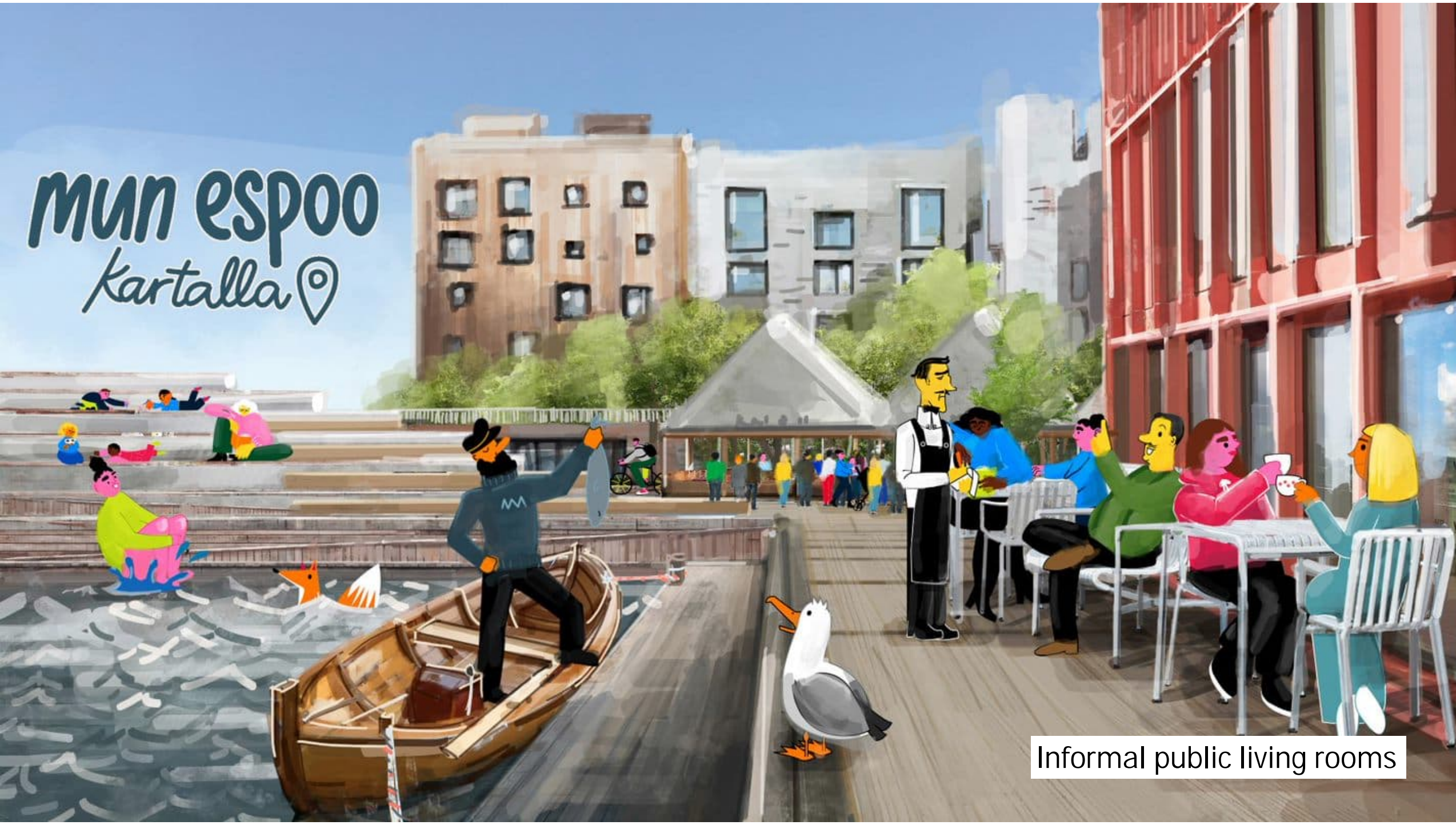




*Mun espoo
kartalla* 📍

The city and nature

Mun espoo kartalla



Informal public living rooms



The city as an active urban space

MUN ESPOO
Kartalla 📍



Vision 2040 for Lahti City Centre

Harju school case

Glass factory chimney case



Keskustan kaavailta

City centre planning night

Timo 26.10.2018 klo 14:22

"Hyvä. Petteri päätti aamulla että asiaa ei tässä muodossa viedä eteenpäin. Onnistui nappiin. Kiitos kuuluu nyt tälle!"

LOPPUTULOS ON MAHTAVA. NYT JOKAINEN PIENTALOASUKAS SÄÄSTÄÄ NOIN 300 – 600 € VUODESSA. Tämä summa vastaa noin 10 – 20 vuoden omakotiyhdistyksen jäsenmaksua. Nyt tuli itsekkin todettua, että kun ollaan oikealla asialla, oikeassa paikassa, oikeiden henkilöiden kanssa keskustellessa, niin tulee järkeviä päätöksiä jopa nopeasti.

Puolivuosraportin
keskustelu
OMA
LAHTI

PALVELUTORI
TOIMIMME
JA TEEMME
YHDESSÄ

ost-it
sietop Easel Pad

3. *What*



Background information for planning in GIS

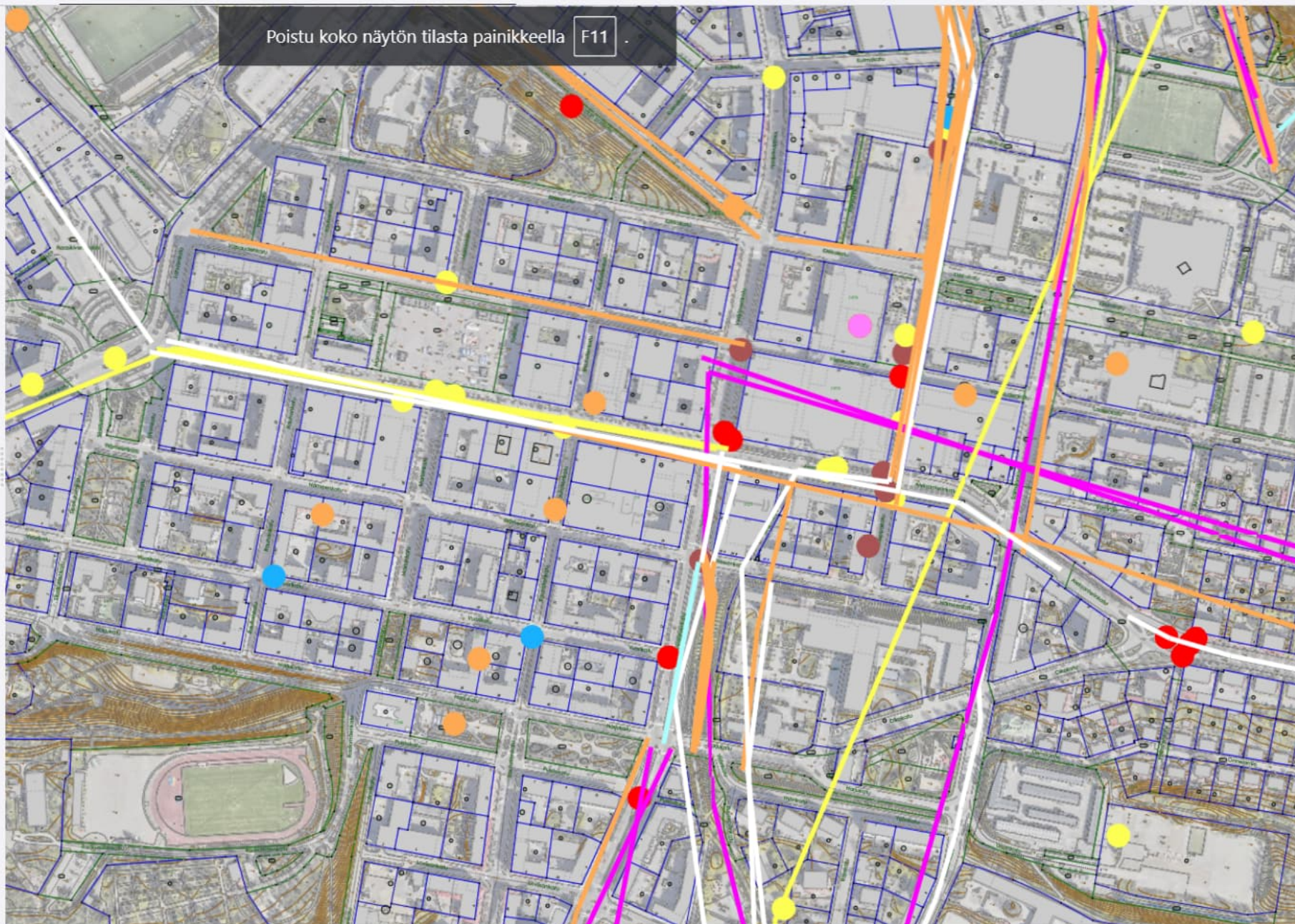
700+ datasets

- Plans and guidelines
- Services
- Livelihoods
- Built environment
- Infrastructure
- Natural environment
- Mobility
- Results of map surveys



Työtila: Viewer

- kyseily Lahden seudun kiertä...
- > Metsien mielipaik...
- > Arjen paikat ja reitit
- > Kaupunkisuunnitt...
- ▼ Lahden pyöräliikenteen tavoiteverk...
 - Pyöräliikenteen tavo...
 - Pyöräliikenteen tavo...
- > Hyvät ja huonot paikat koulu...
- Osbu ja kumppanuuspöyt...
- > MAANALAISET JOHDOT
- > PERUSAINIESTOT
- ▼ ORTOILMAKUVAT, VII...
 - Ortoilmakuva 2022
 - Ortoilmakuva 7/2021
 - Vääräväri ortoilmakuva 7/...
 - Ortoilmakuva 5/2019
 - Ortoilmakuva 5/2017
 - Ortoilmakuva 2016
 - Ortoilmakuva 2014
 - Ortoilmakuva 2011

Poistu koko näytön tilasta painikkeella **F11**

Lean project for PPGIS management

1. Guidelines for making map surveys
2. Making sure guidelines are followed
3. Classification of data in Locus Cloud
4. Training experts
5. Developing Locus Cloud as the general storage place for all knowledge built in participation at the city of Lahti



Roles → stay in your own box here!

Knowledge creator

- *Planners*
- Why should I transfer data to Locus Cloud if I can find it in Maptionnaire?
- Lean guidelines facilitate the transfer

Knowledge storer

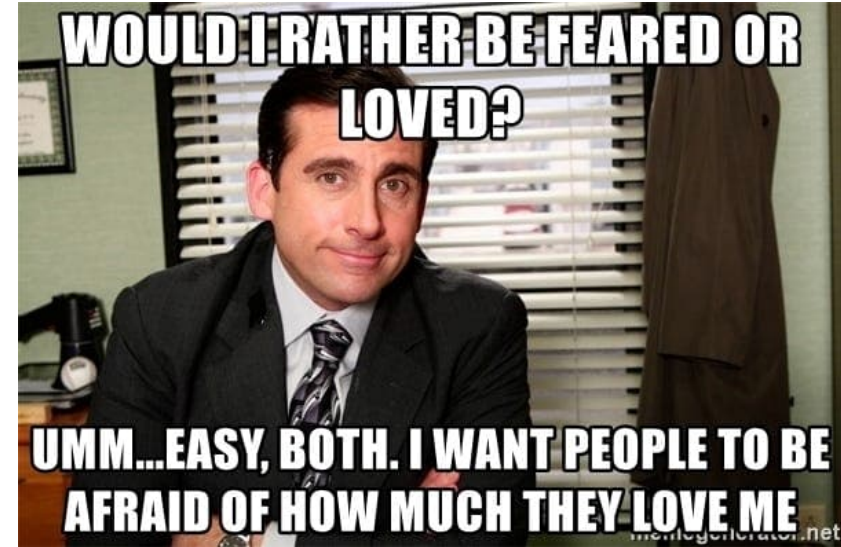
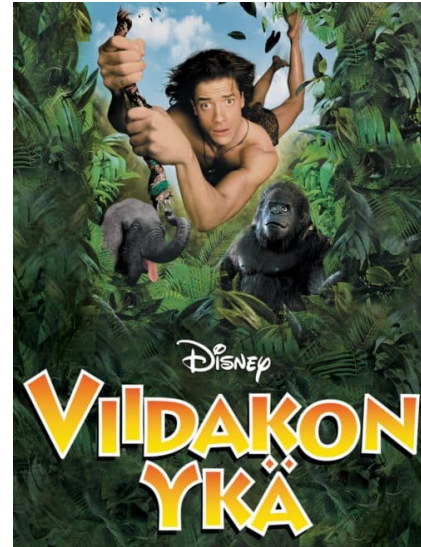
- *GIS engineer*
- How can I help the knowledge creator to make sure the data is transferred to L. Cloud?

Assistant / trainer

- *Interaction planners*
- How can I help in the process so that data gets stored in L. Cloud?
- Responsible for training the lean process
- Knows the requirements for map survey data for L. Cloud

Leaders

- *Planning managers*
- How can I make sure everyone understands why this process is important and how it's done?



The Sykekatu case

Using map survey data for planning



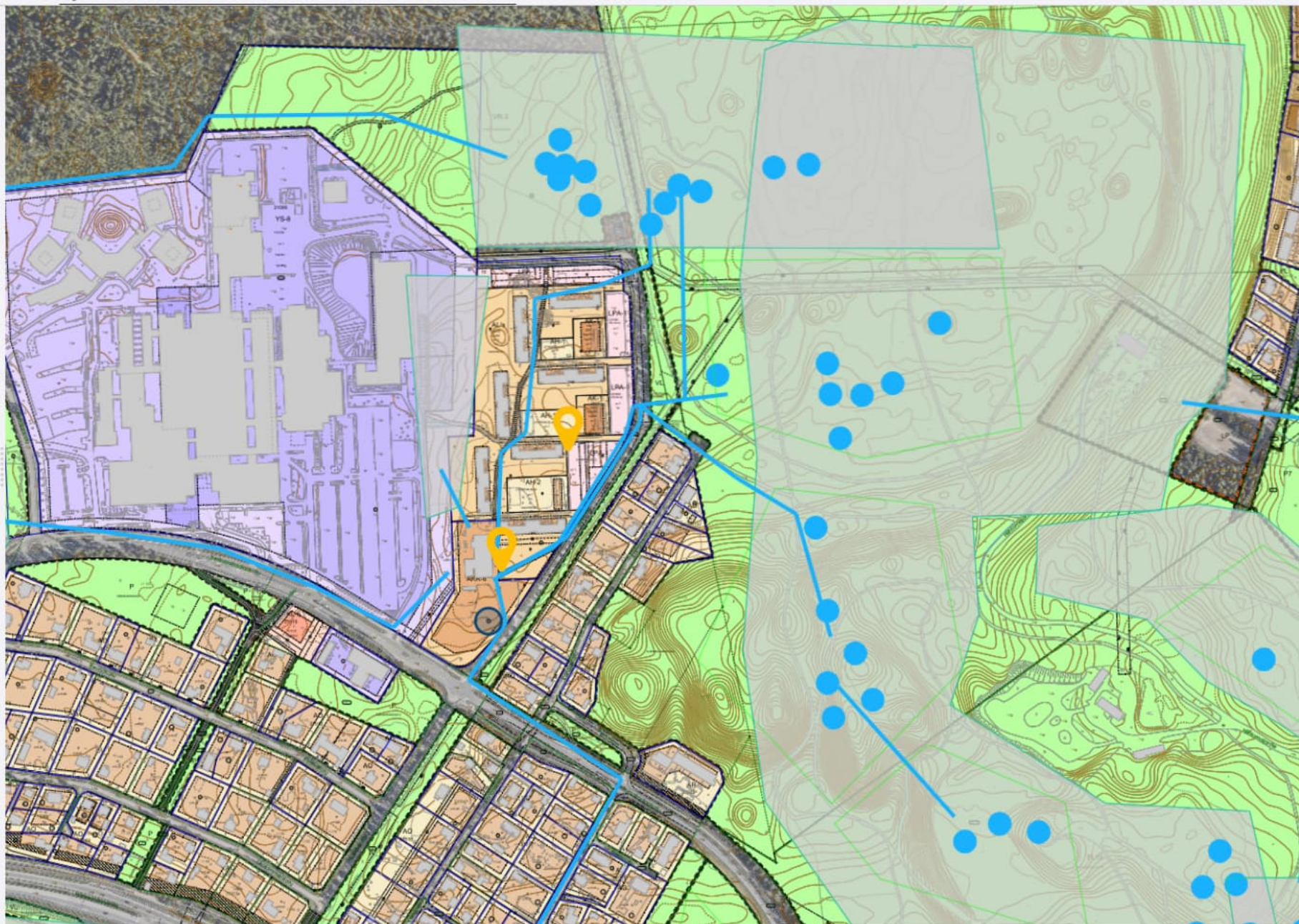
Työtila: Viewer

- ▼ KARTTAKYSELYIDEN T...
- ▶ Turvallisuuskysely...
- ▶ Oma Lahti
- ▼ Lähiluontokartoit...
- Lähiluontokartoitus, vierailaan vähintä...
- Lähiluontokartoitus, ...
- Lähiluontokartoitus, ...
- Lähiluontokartoitus, ...
- Lähiluontokartoitus, ...
- Lähiluontokartoitus, koulut
- ▶ Paras ja kauhein p...
- ▶ Kaupunki lasten k...
- Alueelliset kyselyt
- Arvokkaat kohteet Nastolassa (Kotiseut...
- Leikkialuekysely
- Kerinkallion asukaskysely
- ▶ Kysely Lahden seudun kierrät...
- ▶ Metsien mielipaik...
- ▶ Arjen paikat ja reitit



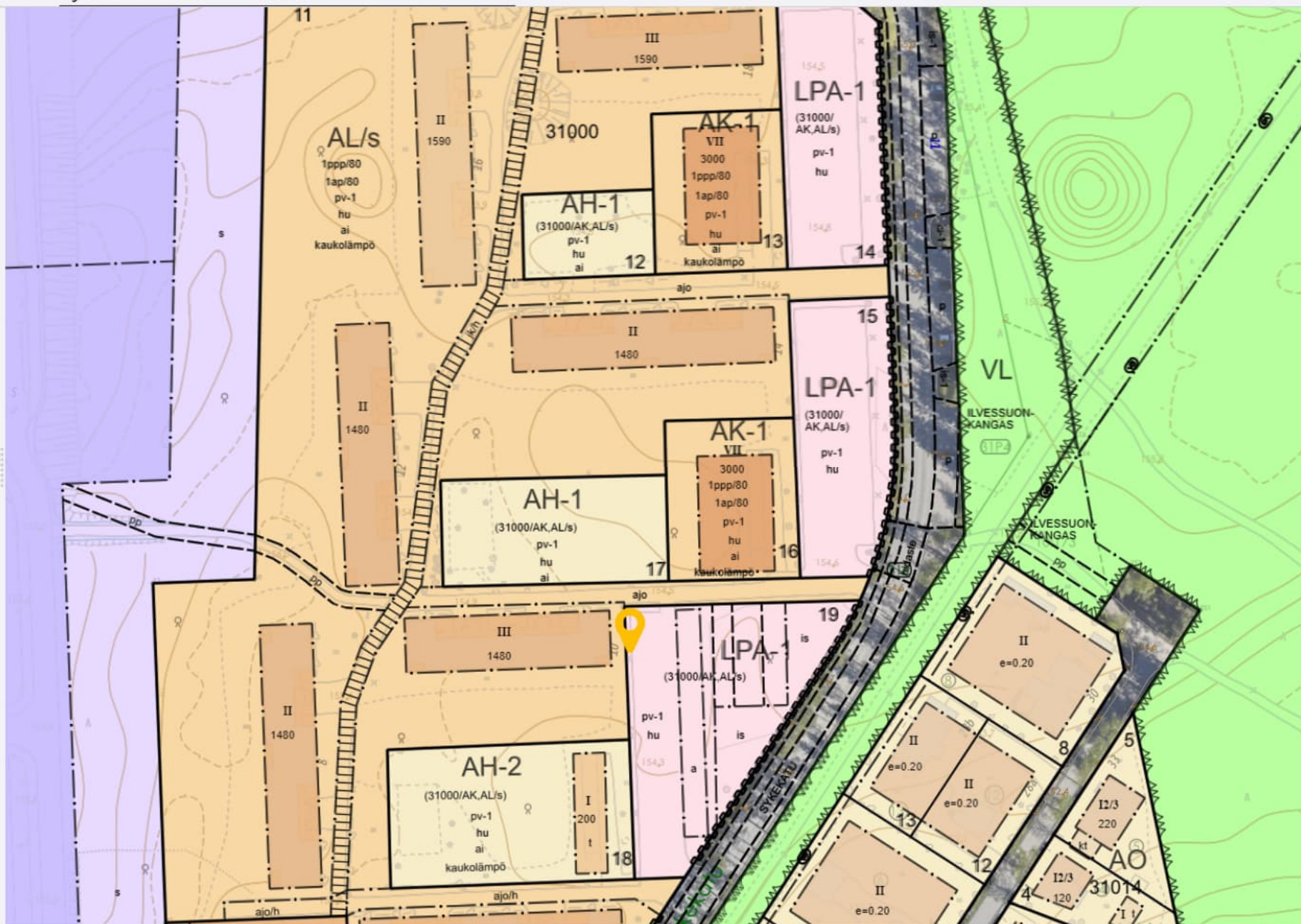
Työtila: Viewer

- > ALUEJAOT
- > LIIKENNE
- > YLEISET ALUEET
- ▼ KAAVOITUS
- > Asemakaavatyöt
- ▼ Asemakaavat ja ra...
- Hakemistokartta
- Ajantasa-ase...
- ▼ Ajantasa-ase...
- Ajantasa-ase...
- Kaavayksiköt
- Kaavamerkinnät
- Määräysalueet
- Aluevarausalueet
- Asemakaavoitettu alue
- > Yleiskaavatyöt
- > Yleis- ja maakunta...
- > Suunnitelmat ja o...
- > Tonttivaranto



Työtila: Viewer

- >
VÄESTÖ
- >
PALVELUKOhteet
- ✓
KARTTAKYSELYIDEN T...
- >
Turvallisuuskysely...
- >
Oma Lahti
- ✓
Lähiluontokartoit...
- Lähiluontokartoit...
- Lähiluontokartoit...
- Lähiluontokartoit...
- Lähiluontokartoit...
- Lähiluontokartoit...
- Lähiluontokartoit...
- >
Paras ja kauhein p...
- >
Kaupunki lasten k...
- Alueelliset kyselyt
- Arvokkaat kohteet Nastolassa (Kotiseut...
- Leikkialuekysely
- Kerinkallion asukaskysely
- >
Kysely Lahden seudun kierrät...



The Dream

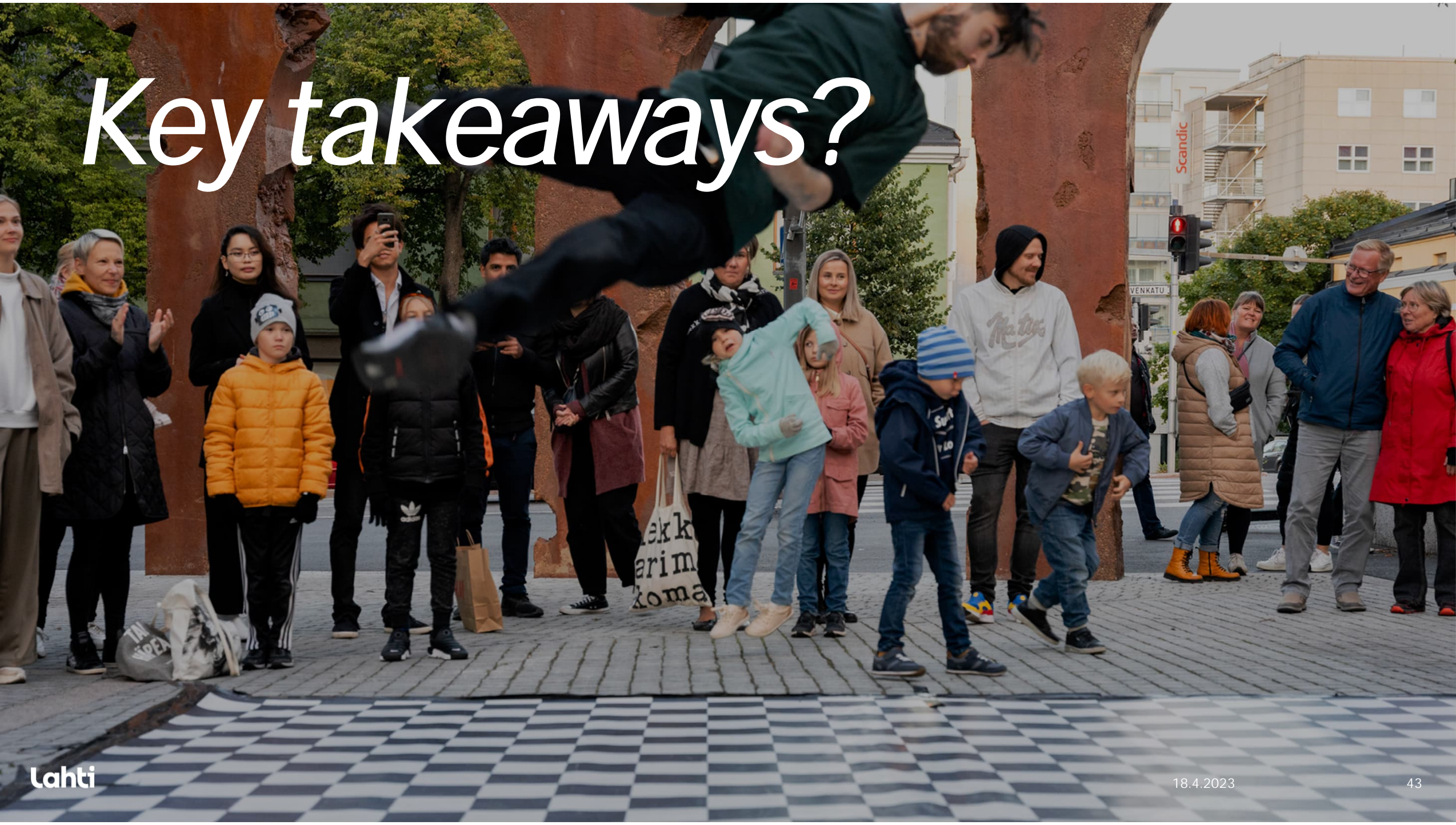
*All data
is easily
accessible
in one place*



*Planning is about
using multiple knowledges
to achieve positive change.*

Yvonne Rydin

Key takeaways?



Thank you!

Johanna Palomäki

+358 50 387 8715

johanna.palomaki@lahti.fi

Twitter: @palomak1