

LC-1121 Communicating Sustainable Solutions

Autumn 2023



Aalto University
Language Centre

Session 2

- **Sharing your research question and key terms**
- **Sharing your lifeline/ What will you bring to the team**
- **Team values & guidelines**
- **Team agreement/ Establishing ground rules**

- **Homework:**
- **Me as a team member**
- **Investigate and contribute to FISH (2%)**
- **Evaluate your sources using the CRAAP test worksheet**
- **Prepare oral progress report for next time (4%)**

Homework:

- **If you haven't done this already, formulate your 'research question'**
- **Find some source material related to your problem. Write a list of at least 10 key terms that are related to your topic**

Research question and key terms

In your groups:

Check that your research question is a grammatical question.

(e.g., not ‘how to mitigate the effects of climate change?’)

Go through your key terms. How will you define them for the other groups?

Upload your research question and present it to the whole class

Team 1 will consider Team 2's research question

Team 2 will consider Team 3's research question

Team 3 will consider Team 4's research question

Team 4 will consider Team 1's research question

Research questions: consider

How realistic is the research question? Is it the kind of question that could be answered within the confines of a 3-credit course?

What challenges do you foresee in answering it?

Could it be better phrased?

Is it too vague or much too narrow and specific?

**Give feedback on the other
group's question**

Research question

- **Consider the feedback**
- **Go to the link on good research questions**
- **Think how you can improve your question**

Sentence definitions

Term + class + characteristics

Sentence definitions

Term + class + characteristics

Lithium-ion batteries are an advanced type of accumulator commonly found in rechargeable electronic devices, such as mobile phones, laptops and cars.

Sentence definitions

Term + **class** + **characteristics**

Lithium-ion batteries are an advanced type of accumulator commonly found in rechargeable electronic devices, such as mobile phones, laptops and cars.

Formulate sentence definitions for your terms

Present your key terms using sentence definitions

- For the first two terms, take away the term from the sentence definition and the class will try to guess what the term is.
- (e.g., ‘this is an advanced accumulator found in phones and cars’)

Homework:

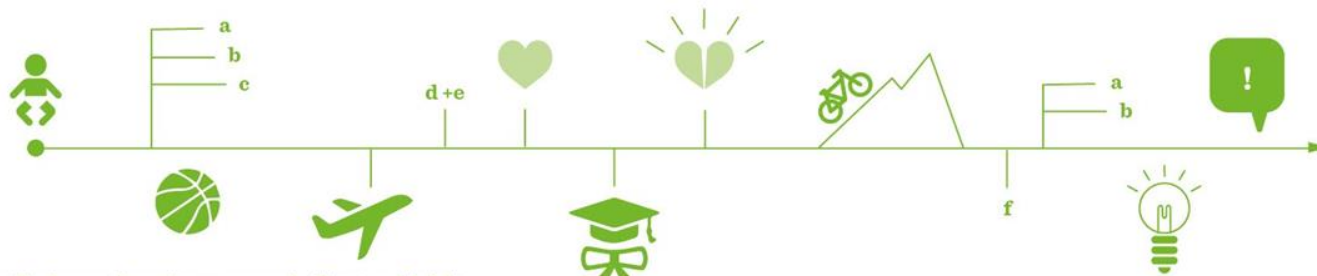
- Lifeline exercise!

TEAMWORK
First-Aid Kit

LIFELINE
exercise

LIFELINE EXERCISE

- 1 Draw a "lifeline" & mark significant occasions in your life, e.g. HOBBIES, STUDIES, WORK EXPERIENCE, VOLUNTARY WORK etc.
- 2 Think: How has the different time periods affected your PROFESSIONAL SKILLS? How have they built up your personal STRENGTHS & OTHER CAPABILITIES?





LIFELINE EXERCISE



15 min

This is my lifeline:





LIFELINE EXERCISE



7 min
per team member

1 *Share your story!*

2 *Think: Based on your experience, WHAT WILL YOU BRING TO THE TEAM/PROJECT?*
Skills, knowledge, experience, understanding etc.



TEAMWORK
First-Aid Kit

TEAM'S
VALUES
and
GUIDELINES



TEAM'S VALUES & GUIDELINES: *Characteristics of a good team*



5 min
for considering individually

Take a moment to consider your previous experience on being part of a team:

- 1 *What has WORKED WELL?
What has not?*
- 2 *What do you find
THE MOST IMPORTANT
when working in a team?*
- 3 *What makes A GOOD TEAM?*





TEAM'S VALUES & GUIDELINES: *Characteristics of a good team*

1 *What has* WORKED WELL?

2 THE MOST IMPORTANT THING
when working in a team?

What has not?

3 *What makes* A GOOD TEAM?



TEAM'S VALUES & GUIDELINES: *Characteristics of a good team*



*For 1, 2 and 3: 5 min
for sharing per person*



*For 4: 10 mins
for sharing/ the whole team*

*Take a moment to consider your previous
experience on being part of a team:*

1

*What has WORKED WELL?
What has not?*

2

*What do you find
THE MOST IMPORTANT
when working in a team?*

3

What makes A GOOD TEAM?

4

*SHARE your ideas and thoughts
of a good team!*





TEAM'S VALUES & GUIDELINES: *Characteristics of a good team*



10 min

1

*Based on your discussion on a good team,
CHOOSE 3 VALUES/GUIDELINES
your team agrees to follow.*

E.g. honesty, open communication, courage, supporting others etc.



10 min

2

*Consider how do these
MANIFEST IN PRACTICE?*

E.g. Open communication; at the beginning of each team meeting there is an "I feel" -moment where everyone can share their feelings regarding the project and their role in it.



5 min

for sharing per person

3

*SHARE what you have agreed upon
with other teams to induce commitment!*





TEAM'S VALUES & GUIDELINES: *Characteristics of a good team*

Our team's VALUES/GUIDELINES:

1		...MEANING THAT WE:	• • • •
2		...MEANING THAT WE:	• • • •
3		...MEANING THAT WE:	• • • •
		...MEANING THAT WE:	• • • •

TEAMWORK
First-Aid Kit

TEAM AGREEMENT

1

COMMUNICATION & INTERACTION

How are you going to ensure good flow of information?

•

What are your communication & interaction key principles?



2

PERFORMANCE & DELIVERY

How are you going to ensure that your team is performing well & delivering what is agreed & requested?

•

What are your principles for meeting deadlines & keeping your promises?



3

DECISION MAKING

How are you going to make decisions?

•

How will you ensure that each of you are aware of & committed to mutual decisions & agreements?



4

CONFLICT RESOLUTION

*What will you do when
a conflict emerges?*

•
*How are you going to resolve
conflicts?*

•
*How can you solve the situations
even before they become
conflictual?*



5

SUPPORT & HELP

*How will you help & support
each other?*

•
*How help & support is requested
within the team?*

•
*How will you support other teams
if requested?*



6

LEARNING & IMPROVEMENTS

*How will you support collective
& individual learning in a team?*

•
*How will you evaluate your
team practices & performance?*

•
*How will you make necessary
changes in your team practices?*

•
*How will you evaluate the appro-
priateness of these principles?*

7

POSITIVITY & FUN

*How will you ensure that
the team atmosphere remains
good throughout the course?*



8

RESPECT & APPRECIATION

*How will you ensure that
all team members feel
that they are respected
& appreciated within the team?*



9

OPTIONAL ISSUES

*The team can decide
possible additional principles
to be agreed on.*



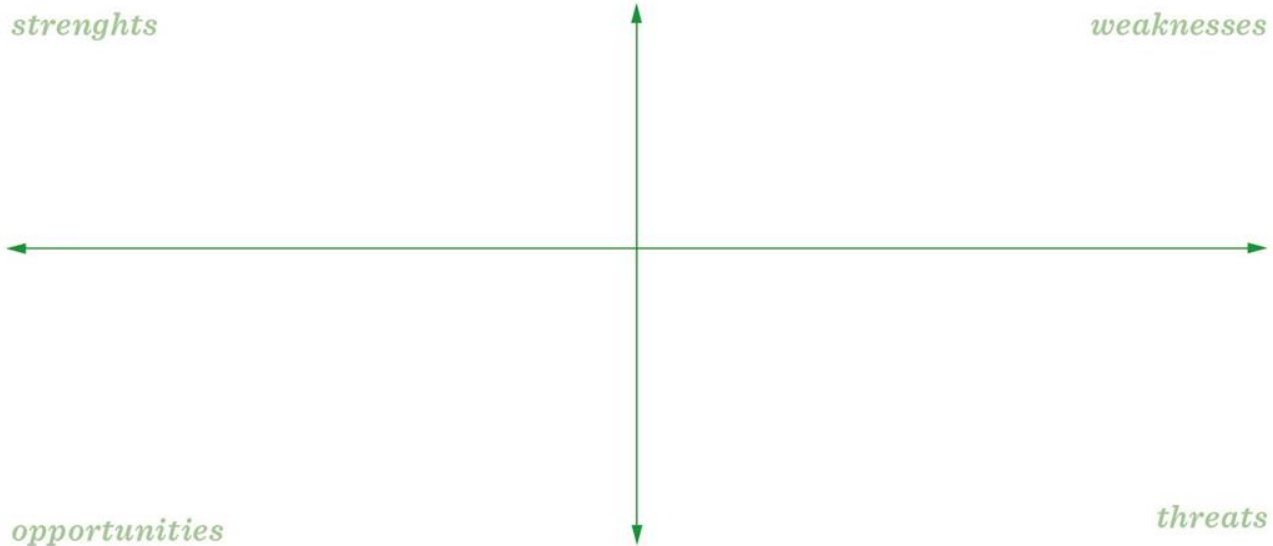
TEAMWORK
First-Aid Kit

ME
as a
TEAM
MEMBER



ME AS A TEAM MEMBER

*What are my STRENGTHS
& WEAKNESSES as a team member?*





ME AS A TEAM MEMBER



5 min
for writing



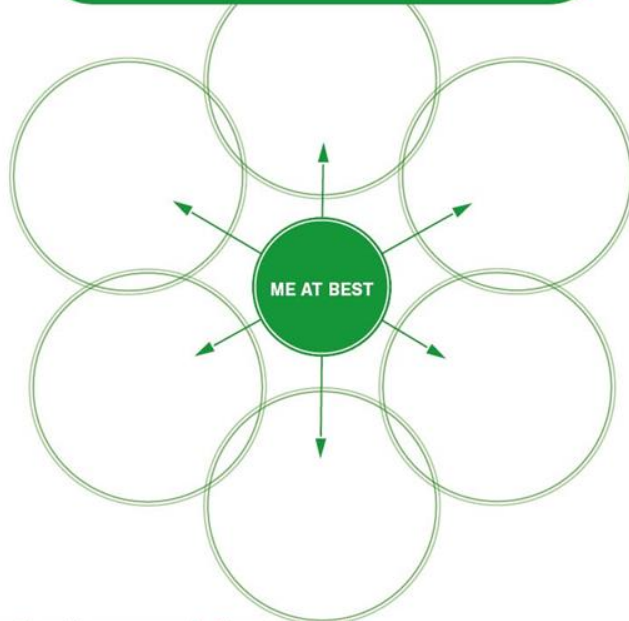
5 min
for writing



5 min
for sharing per person

1

*When am I at MY BEST
when working in a team?
How do these manifest?*



2

*What kind of SUPPORT
do I need from my team
in order to do my best?*

- _____
- _____
- _____
- _____
- _____
- _____



ME AS A TEAM MEMBER

*How would you like OTHERS TO
DESCRIBE YOU after this course?*

“

That person is

!

“

Prepare oral progress report for next time! (4%)

Present (5-7 mins) what your team has decided to focus on & investigate so far:

- How do you perceive the scenario; reflections/questions that arise?
 - What do you see?
 - What do you already know?
 - Previous experiences etc.
- What do you want to find out more about? Formulate a specific research question to be investigated.
 - Research the topic and investigate possible solutions

Q&A after your progress report to get further ideas of the right direction(s) to go!

Homework:

- **Me as a team member (complete the questions and save for I like/ I wish in week 6)**
- **Investigate and contribute to FISH (2%) (Submit to MyCourses)**
- **Evaluate your sources using the CRAAP test worksheet (MyCourses, week 2) and bring to class next week**
- **Prepare oral progress report for next time (4%)**