

Installing art in history

Tribuna of the Uffizi, Johann Zoffany (1772-78)



Self portrait,
Albrecht Dürer,
early 1500



Self portrait,
Albrecht Dürer,
early 1500

1500
AD

Albrechtus Durerus Nontus
ipsum se propens loc esse.
gebam colomibus quatis.
anno M^o XV^o VIII.

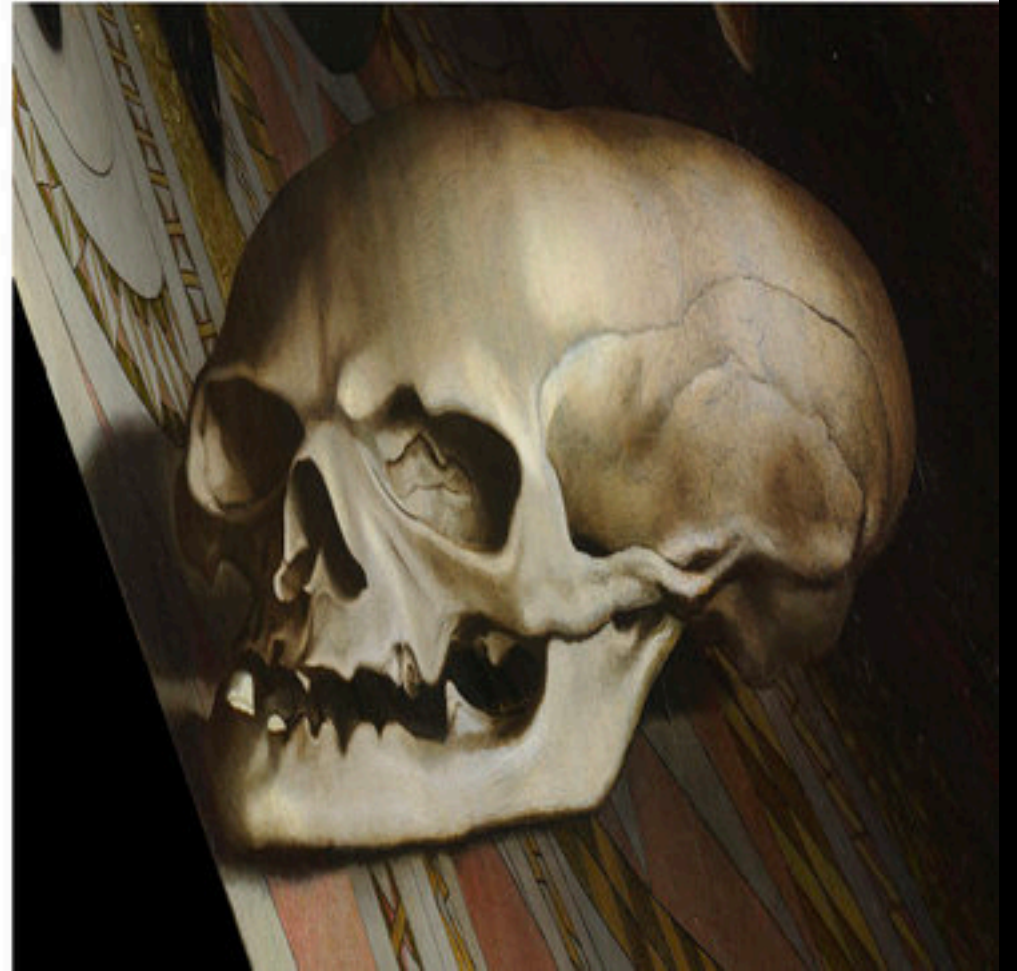


The Ambassador,
Hans Holbein, 1553



EMMA





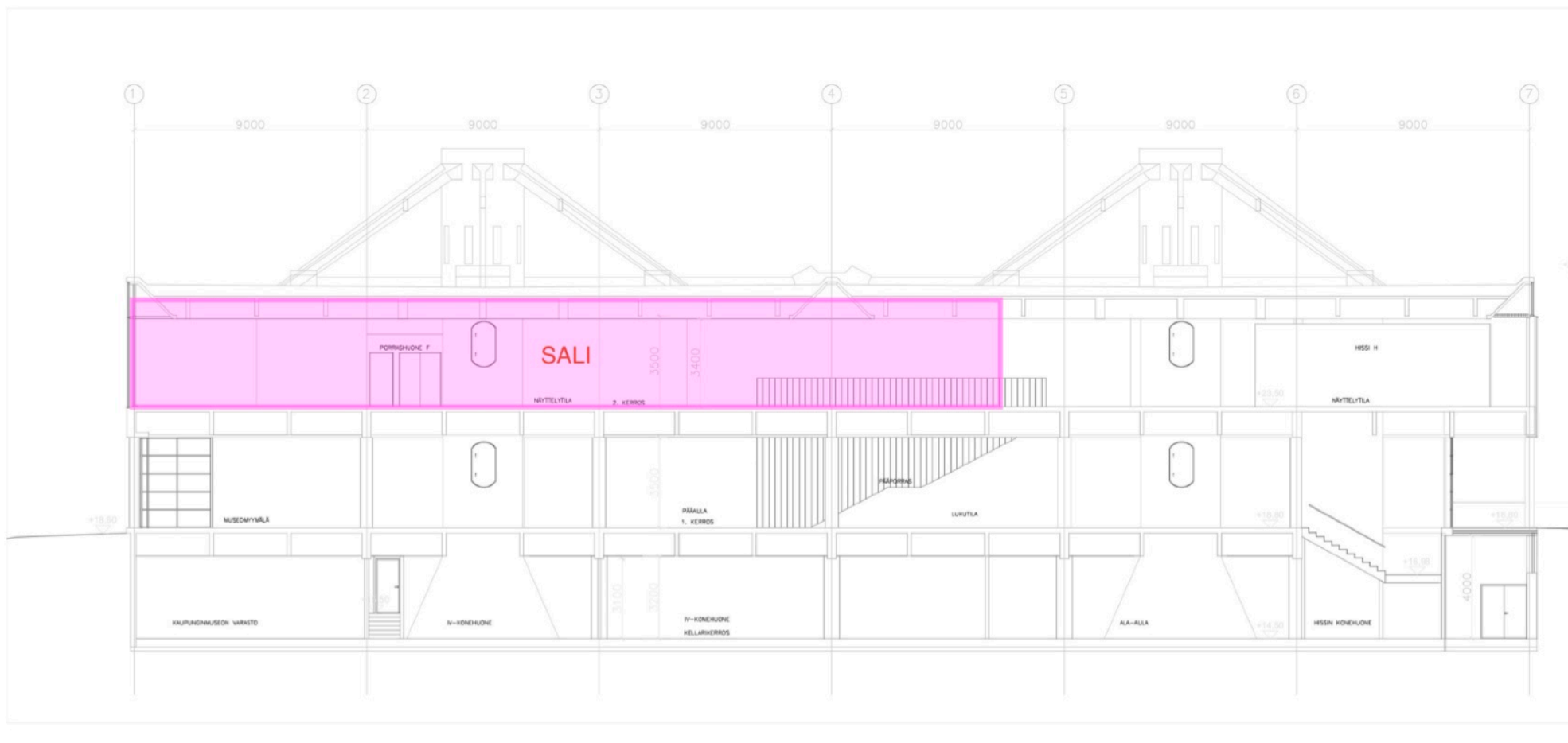
Syndics of the Drapers' Guild,

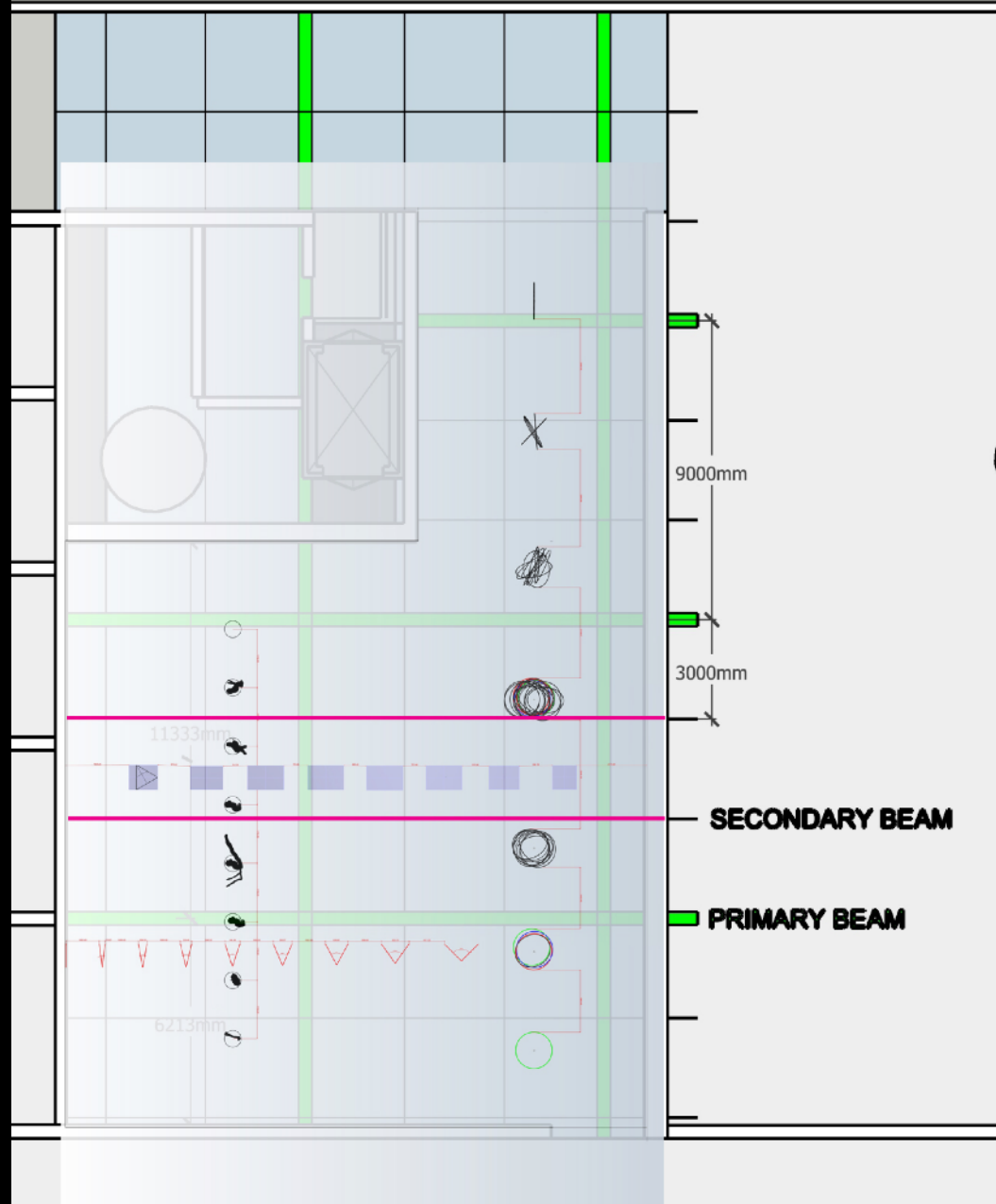
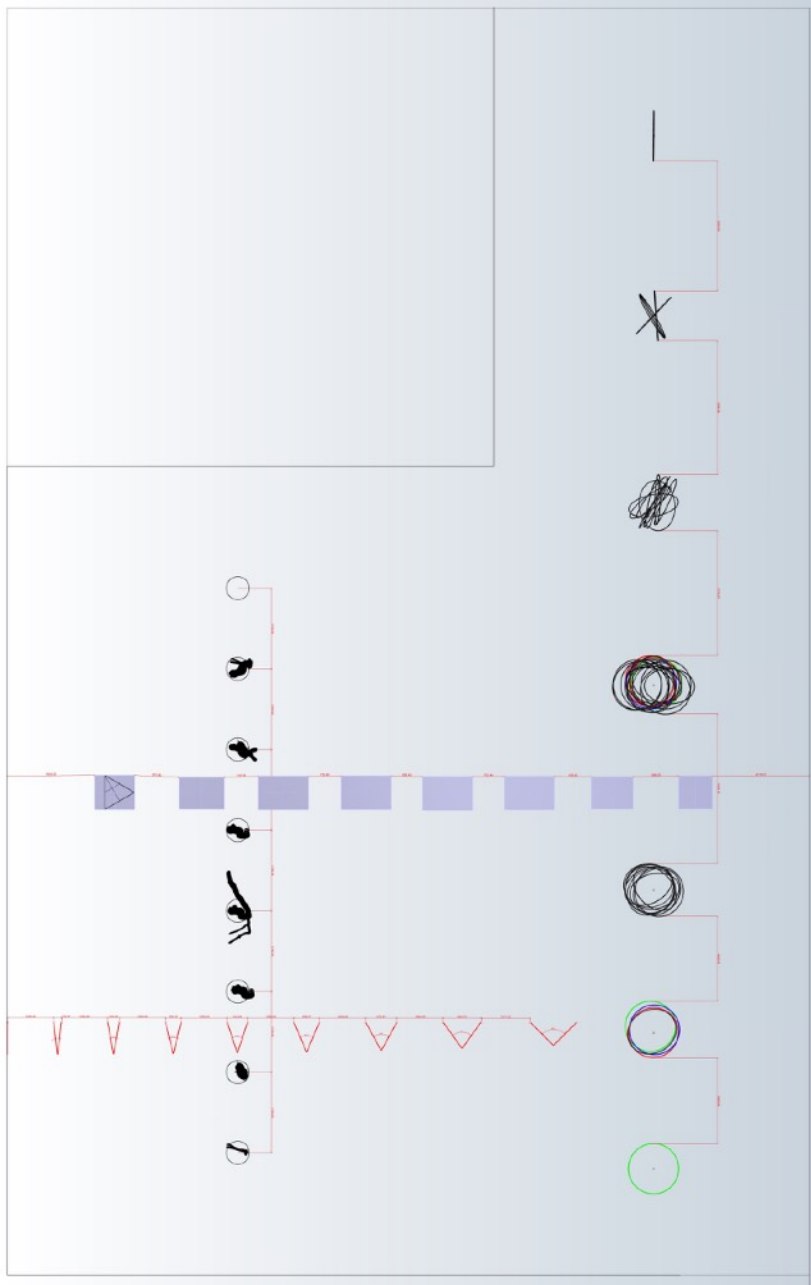
Rembrandt van Rijn,
1662

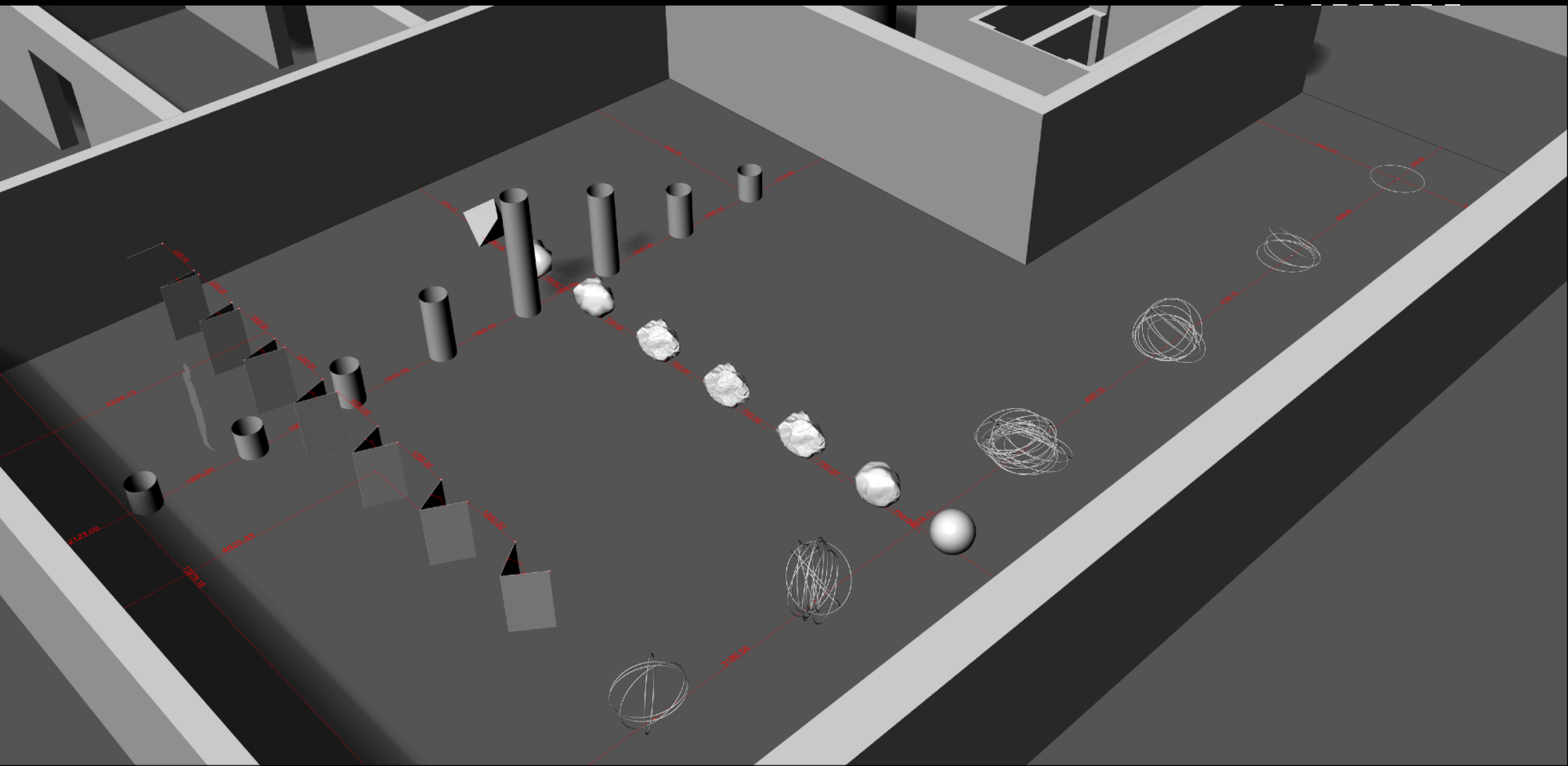




Rembrandt. F. 1661.







2123.00
1757.6

1925.40
1855.8

2550
2620.4

2690
2760.8

3320
3391.6

3950
4022.4

4580
4653.2

5210
5284.0

5840
5914.8

6470
6545.6

980
1050.4

1610
1680.8

2240
2311.6

2870
2942.4

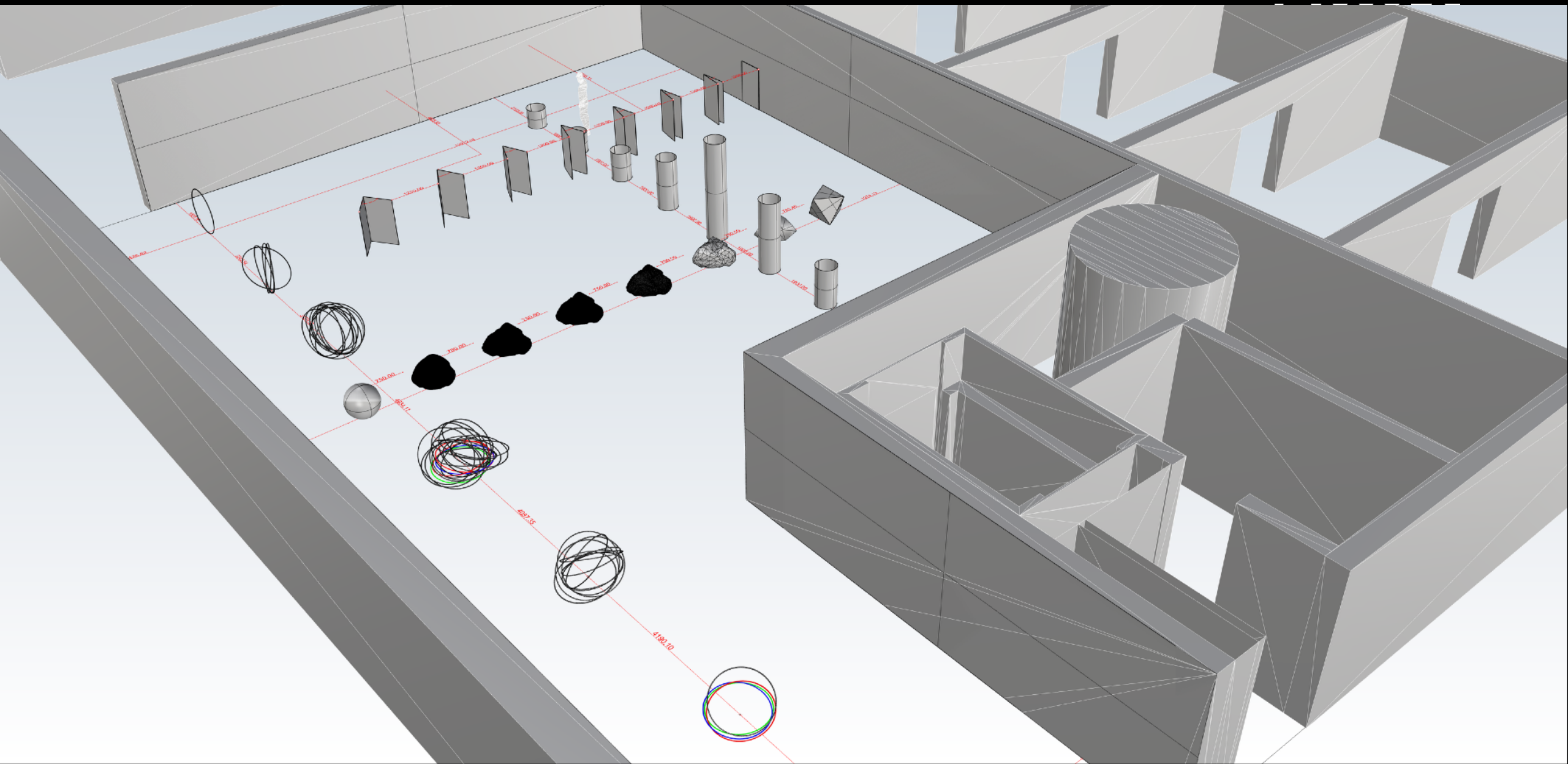
3500
3573.2

4130
4204.0

4760
4834.8

5390
5465.6

6020
6096.4







EMMA



EMMA





EMMA



EMMA

EMMA



IEMMA