

DIGITAL TRANSFORMATION: BUILDING BLOCKS OF A DATA AND ECOSYSTEM STRATEGY

Data Ecosystem Seminar Series, Aalto University, 16.4.2019

Toby White, Wärtsilä Corporation
VP, Digital Engineering

toby.white@wartsila.com

Twitter: [@tow21](https://twitter.com/tow21)

LinkedIn: [/tobyohwhite](https://www.linkedin.com/in/tobyohwhite)

ABOUT WÄRTSILÄ

FOUNDED IN 1834

GLOBAL LEADER

in sustainable solutions for the marine and energy markets

2018

Turnover

5 174 MEUR

Operating result

543 MEUR

Order intake

6 307 MEUR

Operations in

200 LOCATIONS

Our personnel

APPROX. 19 000

Nationalities

138

ENABLING SUSTAINABLE SOCIETIES WITH SMART TECHNOLOGY

**INNOVATING
SINCE 1834**

TOGETHER

**FOR A SUSTAINABLE
FUTURE**

We aim at increasing efficiency while enabling a zero emission society.

Strong emphasis on **digitalisation and smart technologies**

New products and solutions in the areas of **efficiency improvement, fuel flexibility**, total cost of ownership, and the **reduction of environmental impact**

Long-term co-operation with research institutes and partners

ENERGY MARKET TRENDS & DRIVERS

**RAPIDLY INCREASING
RENEWABLES**

**DECENTRALIZED
ENERGY**

**INCREASING ROLE OF
FLEXIBLE GAS**

**EMERGING STORAGE
TECHNOLOGY**

**DATA &
DIGITALIZATION**

TOWARDS A 100% RENEWABLE ENERGY FUTURE

The energy landscape is in transition towards more flexible and sustainable energy systems. We envision a 100% renewable energy future.

Wärtsilä is leading the transition as the Energy System Integrator – we understand, design, build and serve optimal power systems for future generations.

Engines and storage will provide the needed flexibility to integrate renewables and secure reliability.

We develop and deliver solutions and services to help our customers maximize performance and profitability throughout the asset lifecycle.

THE LEADING ENERGY SYSTEM INTEGRATOR



ENGINE POWER PLANTS

Ultra-flexible internal
combustion engine
based power plants



ENERGY STORAGE AND INTEGRATION

Utility-scale energy
storage solutions and
advanced software



RENEWABLES

Utility-scale solar power
plants integrated with
engine power plants and
energy storage



GAS-TO-POWER

LNG solutions integrated
with engine power plants
in one single project



LIFECYCLE SERVICES AND ASSET MANAGEMENT

MARINE MARKET TRENDS & DRIVERS

URBANISATION
AND INCREASE IN
POPULATION

AGING OF
POPULATION
AND GROWING
MIDDLE-CLASS

ADVANCED
TECHNOLOGY
DEVELOPMENTS

CLIMATE CHANGE

GEOPOLITICAL
FACTORS AND
SCARCE
RESOURCES

MARINE BUSINESS

In the maritime and oil & gas industries, no other company has a broader offering of technologically advanced, environmentally sustainable, and economically sound solutions. With an integrated product portfolio comprising full lifecycle solutions, **we are leading the industry's transformation** towards a highly connected Smart Marine Ecosystem.

TOWARDS A SMART MARINE ECOSYSTEM

We are leading the industry's transformation towards a Smart Marine Ecosystem, whereby **real-time communication** and the **digitalisation** of all aspects of shipping and port operations, including the entire logistics chain, are utilised to **create long-term value** for our customers and partners.

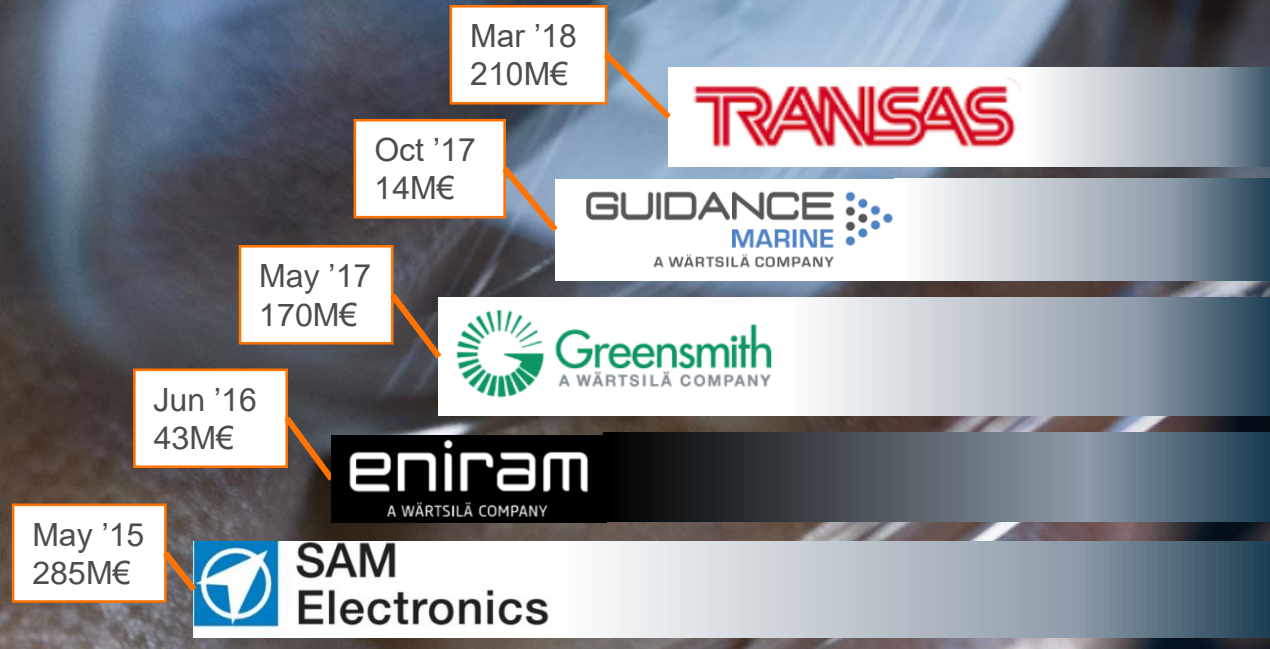
By applying smart technology and performance optimisation services, **we deliver higher safety, greater efficiencies and minimised climate impact.** This will result in more sustainable, safe, and profitable operations for ship owners and operators around the world.

DATA STRATEGY

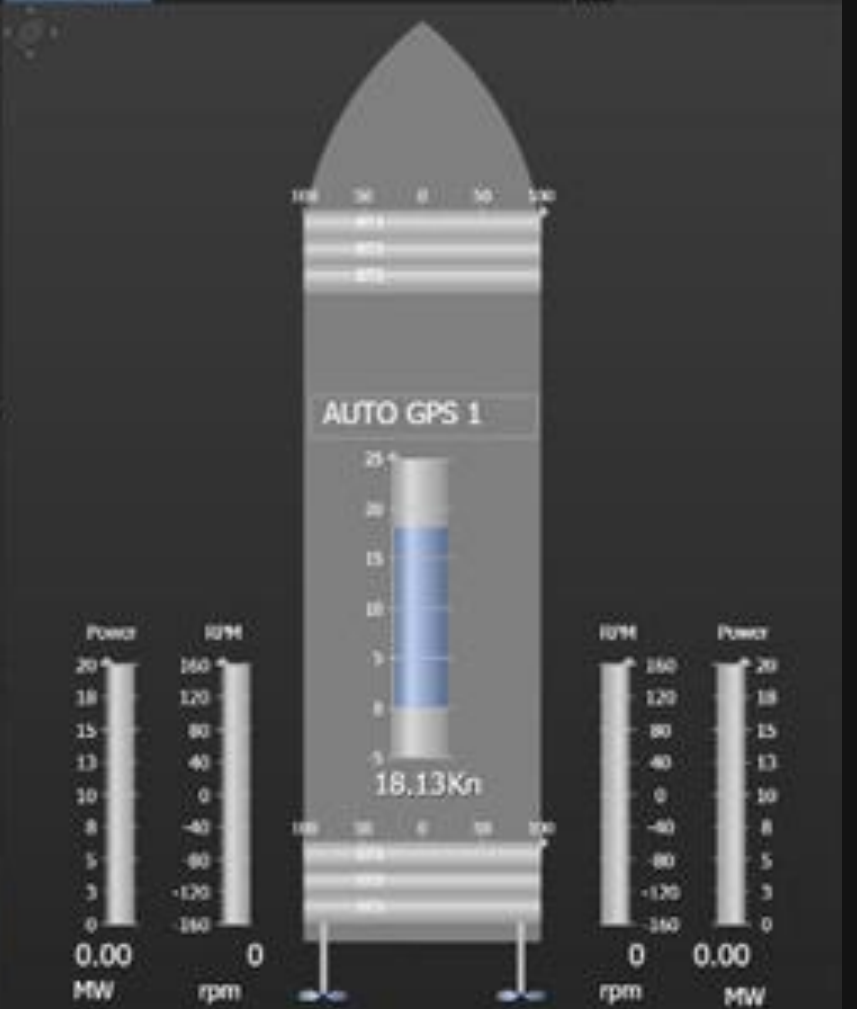
Strong emphasis on digitalisation and smart technologies

Acquisitions have brought us strengths in

- Software expertise
- Data acquisition
- Insight generation



Data Driven
Smart Technology
Company



FROM DATA COLLECTION TO PREDICTIVE ANALYTICS

2009-2011

**REAL-TIME
ONBOARD**

Eniram Vessel
platforms
installed on core
fleets

2012-2013

**REACTIVE
ANALYTICS**

Initial reactive
analytics in place
with operational pdf
reports and web
tools

2013-2014

**PREDICTIVE
ONBOARD**

Eniram vessel
platforms enabled
with predictive
capability

2015-2016

**REAL-TIME
ANALYTICS**

Real-time data &
performance
dashboards. First
generation of mobile
operations and
predictive analytics

2017-2018

**PREDICTIVE
ANALYTICS**

Expand to new
features and areas
such as safety,
security, emissions,
maintenance, and
hotel operations



Applications



Frequency
Regulation



Ramp Rate
Control



Renewables
Smoothing



Capacity
Shifting



Demand
Management



EV Charge
Management



Black
Start

Computational Platform

Operation Scheduling • Peer-to-Peer Group Control • Real-time Equipment Control • Local HMI

Components

BMS Adaptors



PCS Adaptors



Grid Adaptors

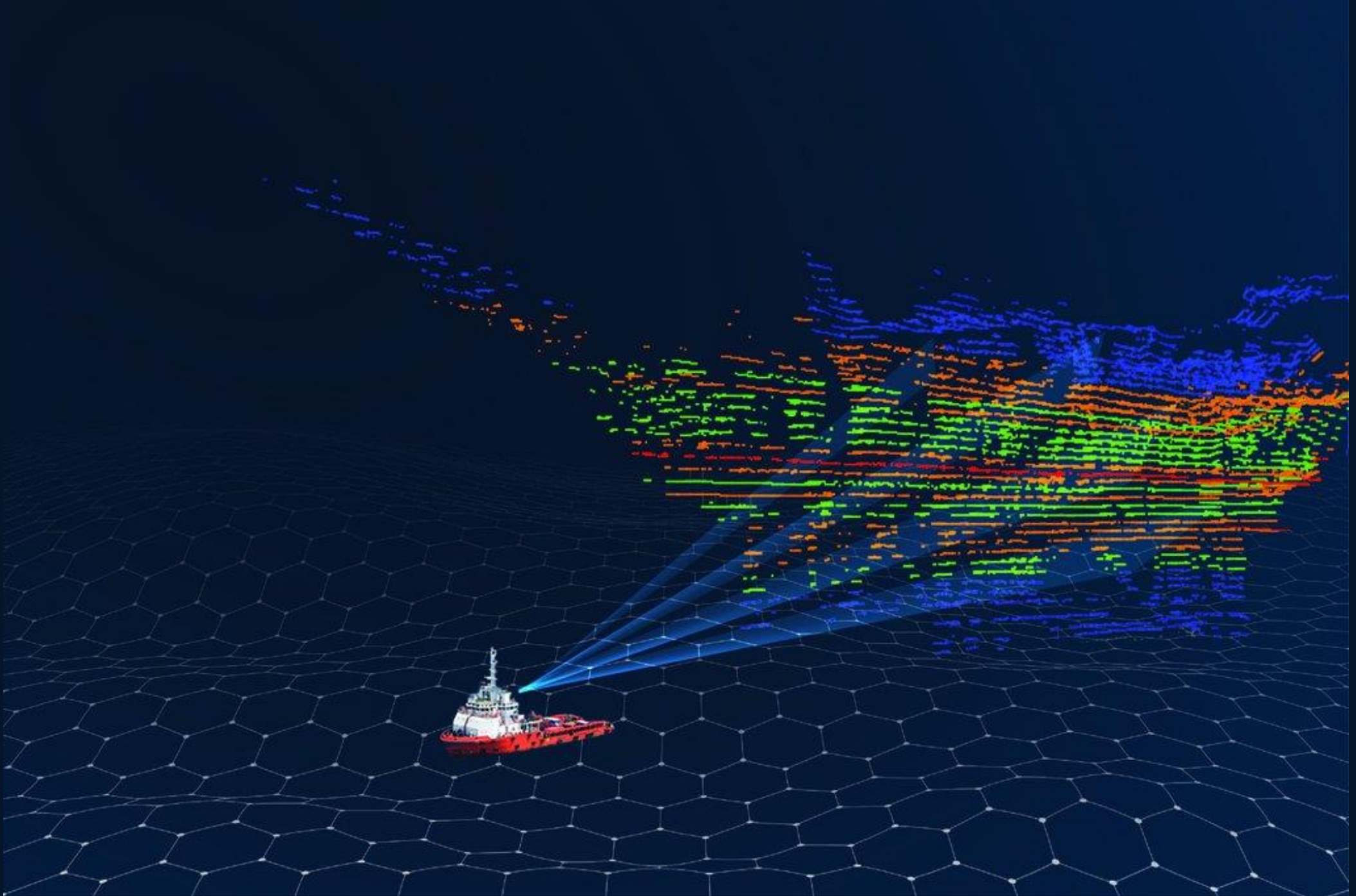


AMI Adaptors



Other Device
Adaptors

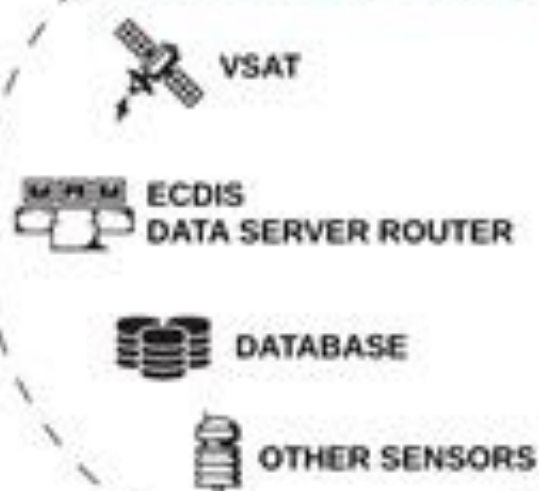
Temperature sensors
Fire suppression
HVAC, etc.



FLEET OPERATIONS SOLUTION

A-SUITE

SHIP HARDWARE



COMMUNICATIONS

ASAT | Agnostic Satellite

APPLICATIONS

AIR | Advanced Intelligent Routing

AID | Advanced Intelligent Diagnostics

AIM | Advanced Intelligent Maneuvering

SERVICES

ADD | Advanced Data Delivery

SUPPORT

ARM | Advanced Remote Maintenance

ACCESS



FLEET OPERATIONS
CENTRE

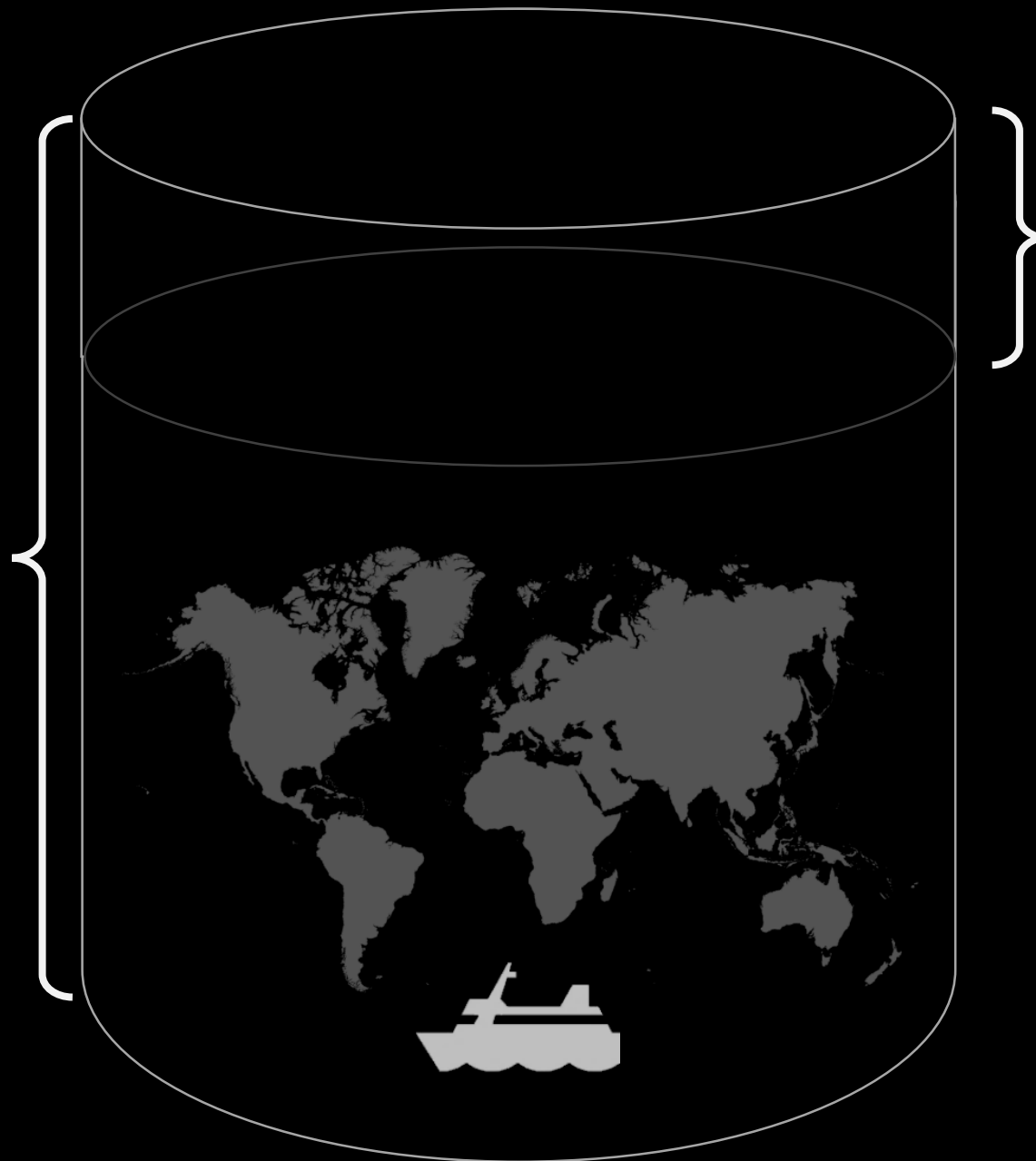


MOBILE

THESIS MANAGED SERVICE

€200 Bn

SPENT ON FUEL
PER YEAR



Optimising onboard operations
will save

€20 Bn+

Optimising the logistics chain
will save

€60 Bn+





ECOSYSTEM STRATEGY

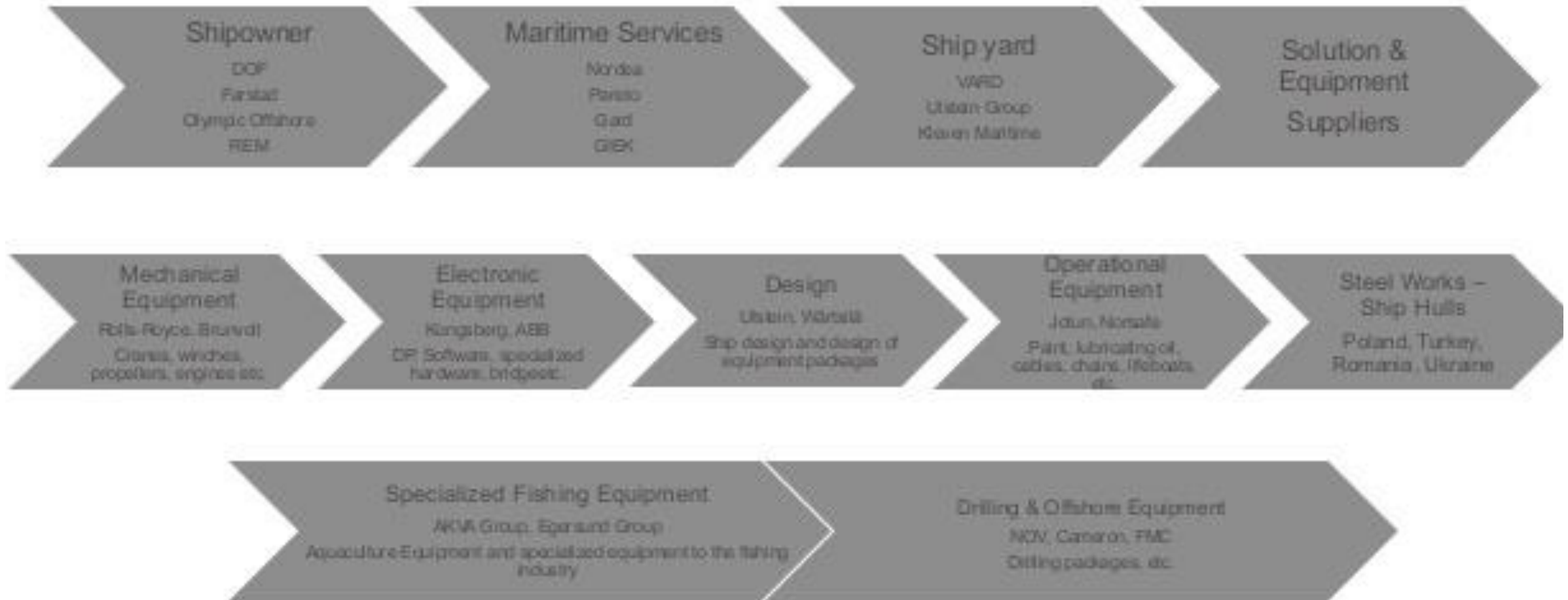
Introduction



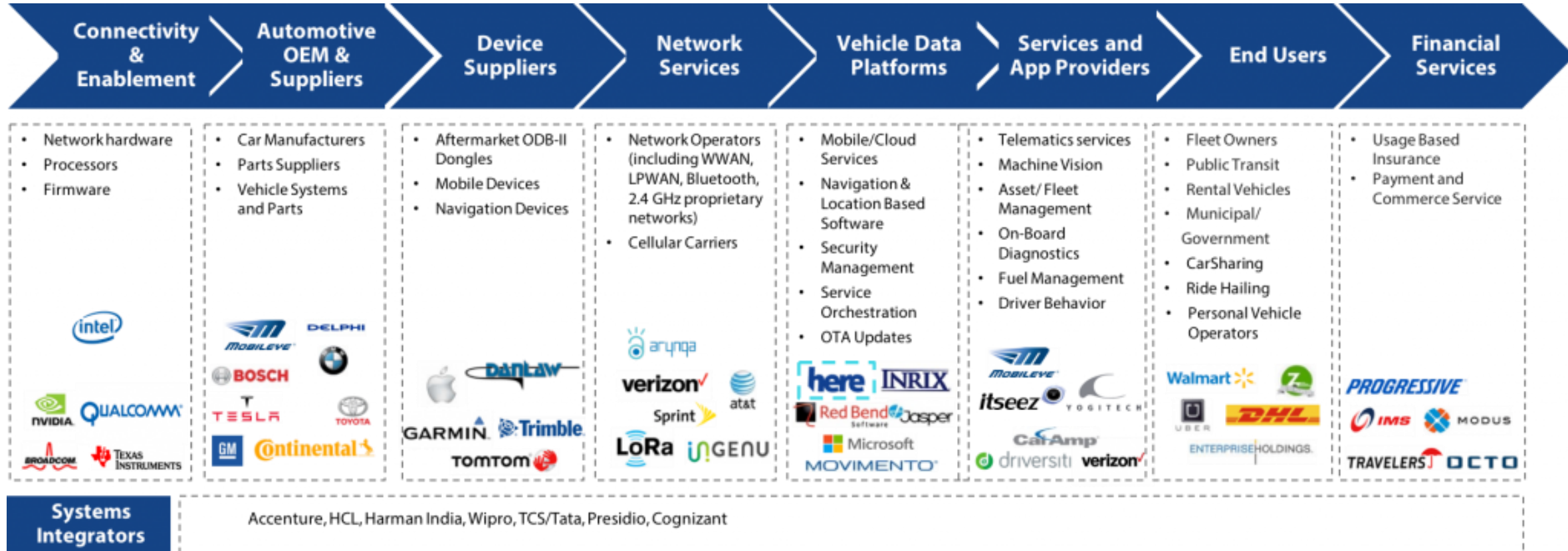
WHAT WE KNOW



Norwegian shipbuilding Value Chain

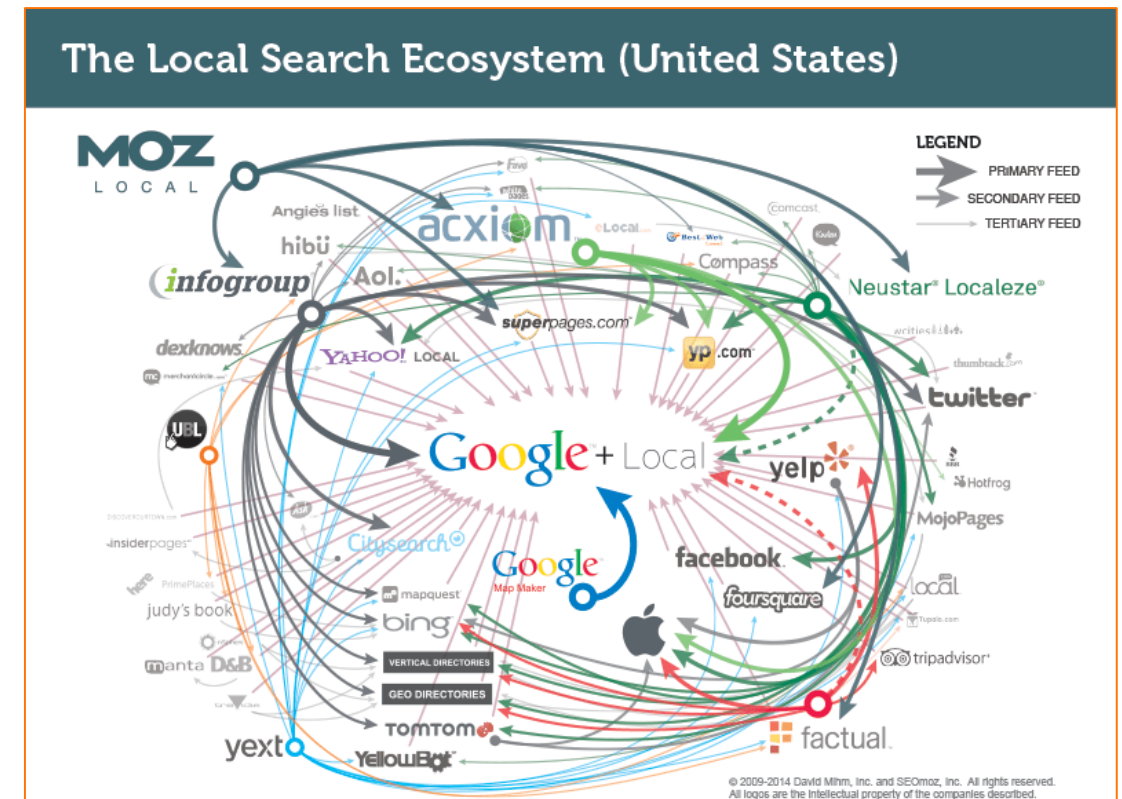
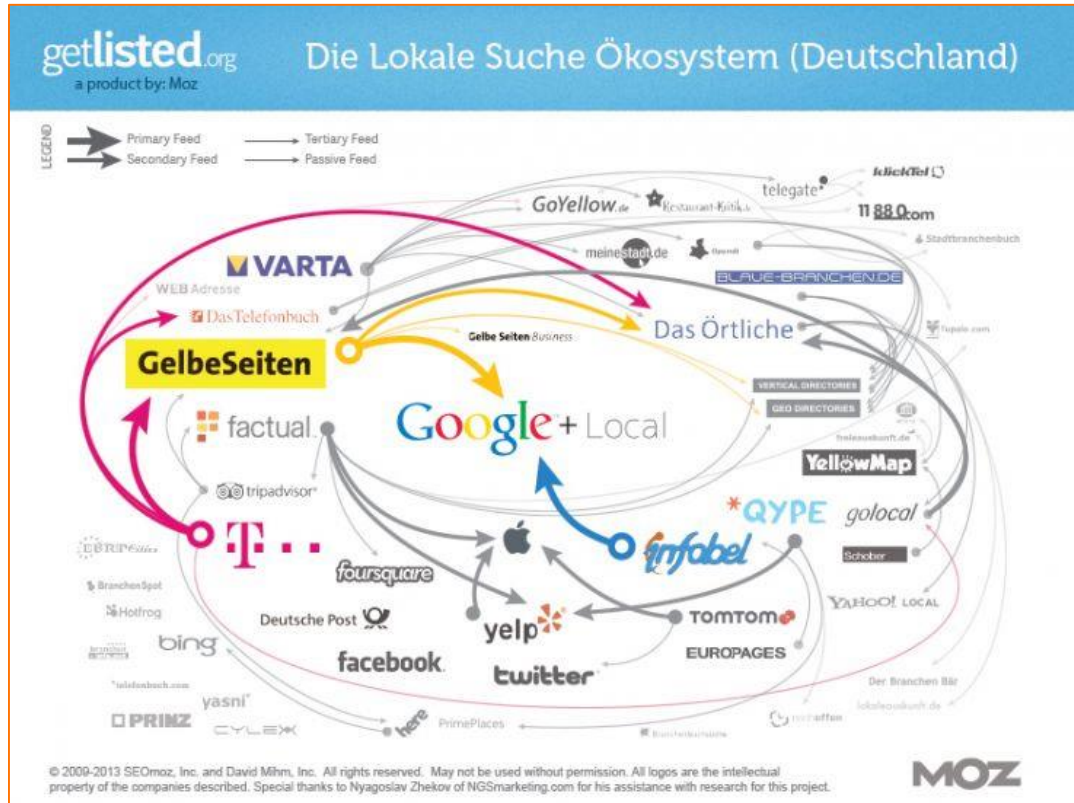


WHAT WE ARE LEARNING



<http://harborresearch.com/transportation/>

WHAT WE WILL NEED TO UNDERSTAND



- 
- TECHNOLOGY FOUNDATIONS
 - ROUTE TO CUSTOMER VALUE
 - TRUST



WÄRTSILÄ