

# Digitalization and Maintenance



Antti Säynäjoki  
Development Manager  
Aalto University Campus & Real Estate  
ELEC-E8124 - Intelligent Buildings 26.10.2020

# Aalto CRE

# ACRE

Aalto University  
Campus & Real Estate

Aalto CRE **maintains, develops** and **rents out** Aalto University facilities in Otaniemi. We also **build new concepts** and shared facilities for parties outside the university, turning Otaniemi into a unique partnership centre and the most inspiring campus in the world.

# Developing campus



# Campus Development Principles



Increasing  
social density  
& diversity



Re-inventing  
user  
experience



Ensuring long-  
term capability  
for the  
University



Enhancing  
health, well-  
being &  
culture

**PHYSICAL, SOCIAL & DIGITAL**

# Structure of the Presentation

1. **Digitalization on the Real Estate Sector**
2. **Digital Service Development: Case Aalto Space & Smart Campus**
3. **Digitalization perspective to the maintenance services on the Aalto Campus**



Picture: Mika Huisman & Aalto University

# Digitalization

## The biggest revolution since steam engine and electricity (e.g. Brynjolfsson & McAfee 2014)

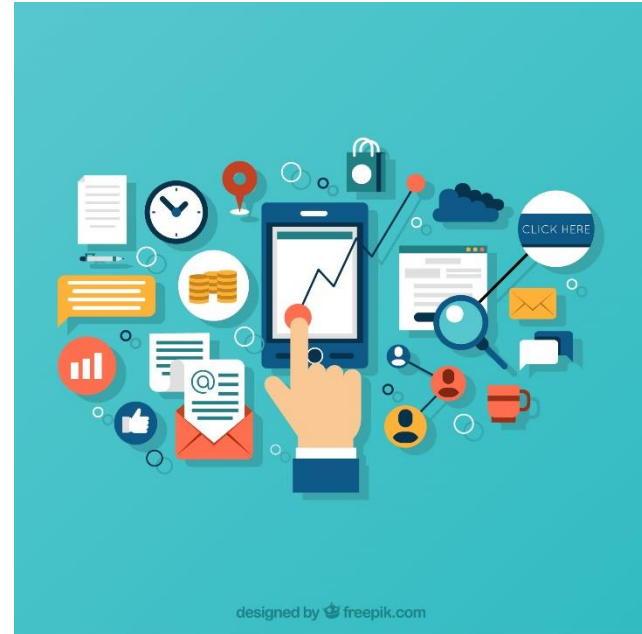
- mechanization replaced muscle work
- digitalization replaces basic knowledge work?

## Provides new opportunities in resource efficiency, for example

- cars: Uber
- apartments: Airbnb

## Most solutions still are not commercially stabilized yet

- energy markets: storage & demand response
- facility markets: utilization/occupancy rates still remain as a challenge in the campus development as well



# New key feature of digital services: data which provides knowledge

**Digital solutions provide means for better understanding**

**The assets:**

- indoor conditions
- utilization rates
- footfall
- dwell time
- etc.

**The customers:**

- demographics
- preferences
- habits
- etc.

➤ **More informed development decisions**



**Aalto Space is a mobile application for Android and iOS devices.**

**It helps navigating around Aalto University's campus and allows application users to book facilities for studying and work.**

*Aalto Space is part of  
Aalto ITS Project Portfolio*





# Aalto Space Campus App

- **A mobile application developed for campus users**
  - Roughly 20k downloads
  - Soon to be supported in all Otaniemi Campus buildings
- **The current features**
  - Mobile space reservations
  - Indoor & outdoor navigation
  - Emergency communications
  - Indoor Climate Service (pilot)

- **Future features**
  - Location sharing
  - Transactions
  - Campus Membership
  - etc.



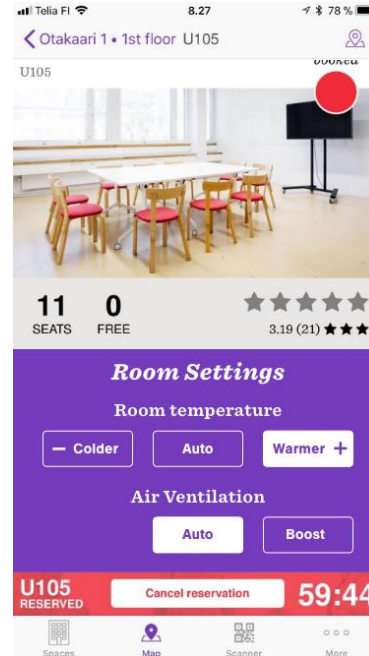
# Aalto Space Indoor Climate Service



Aalto University  
Campus & Real Estate

The service involves users to the indoor air service provision via Aalto Space

- **Functionalities:**
  - **Room Temperature:** Colder/Auto/Warmer (-2/+2°C), provisioned via Fourdeg remotely adjustable thermostats
  - **Air Ventilation:** Auto/Boost, provisioned via Fidelix air ventilation control unit

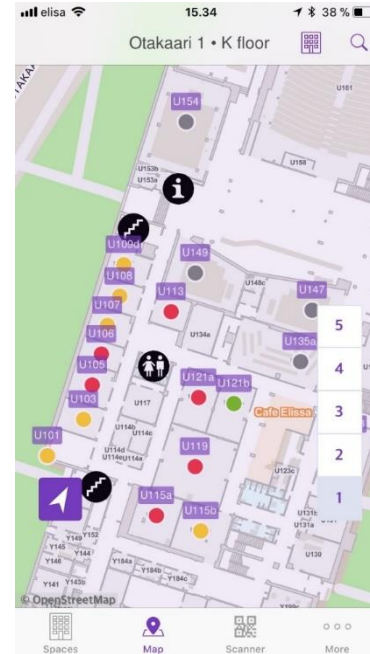


# Aalto Space Indoor Climate Service

# ACRE

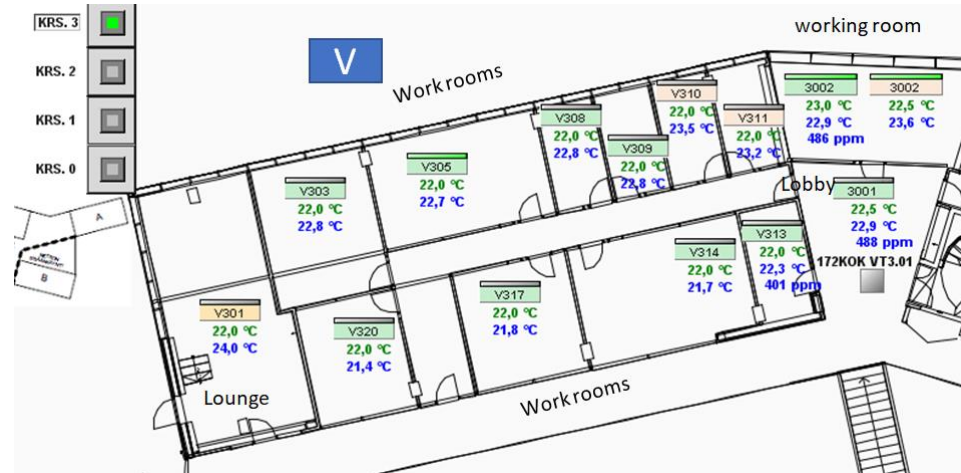
Aalto University  
Campus & Real Estate

- R&D environment
  - Seven Otakaari 1 U-wing multi-purpose rooms
- Benefits of the service
  - **Provide the users a possibility to influence the indoor conditions**
    - Less complaints
  - **Utilize data of the users**
    - Promote productivity & well-being
    - Save resources – no heating or cooling without a need for them
- **Improve the space attractiveness and customer value production**



# Smart Campus Service

- Department of Computer Science hosts the Smart Campus Service
- Gathers data from building automation & other systems/sensors
- Also able to steer the connected building systems



# Digital maintenance services

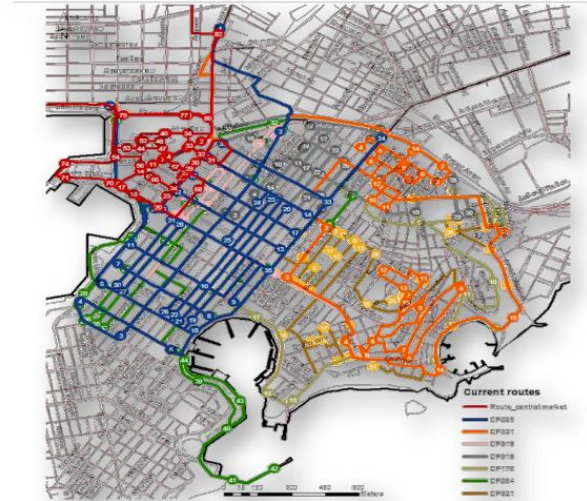
## Aalto property structure and organization:

- The properties owned by the Aalto University are divided into 27 separate real estate companies
- The departments and other tenants pay rent & maintenance charge to the university
- Aalto CRE maintenance team owns the building manager level activities
- On the behalf of the Aalto University Aalto CRE procures most of the property and facility services from the external providers e.g. L&T, ISS and Palmia



# Digital maintenance services

- How to improve the maintenance services with the new data?
- Challenges of the digital maintenance services:
  - Data availability
  - Operation model flexibility
  - Others?
- Garbage disposal example?
- Cleaning example?



Anagnostopoulou et al. 2013: An Advanced Solution Approach for Energy Efficient Garbage Collection Service

# More information:



[antti.saynajoki@aalto.fi](mailto:antti.saynajoki@aalto.fi)