

Amanda Halme  
Erik Jaatinen  
Katariina Kasvinen  
Erkko Kukkonen

# DEVELOPING STATIONS OF LÄNSIMETRO

*Case Soukka & Kivenlahti*



# AGENDA

## Case Soukka and Kivenlahti

GIS DATA ANALYSIS  
OF AREAS

HOW THESE PLACES LOOK  
LIKE?

*FUTURE SCENARIOS*

01

02

03



# ESPOO

HELSINKI



KIRKKONUMMI

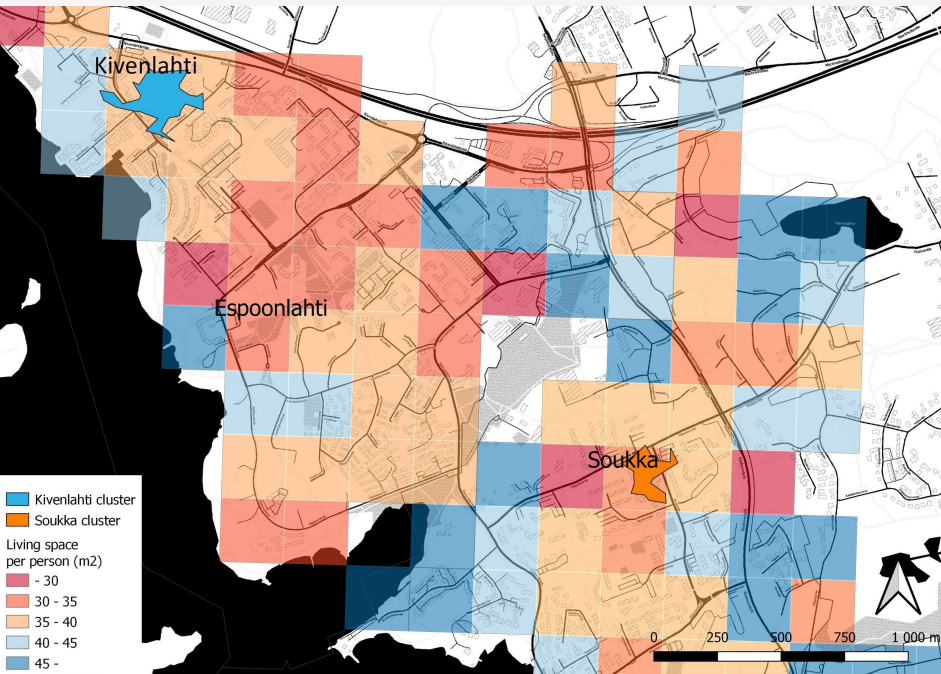


Respondents criticized:

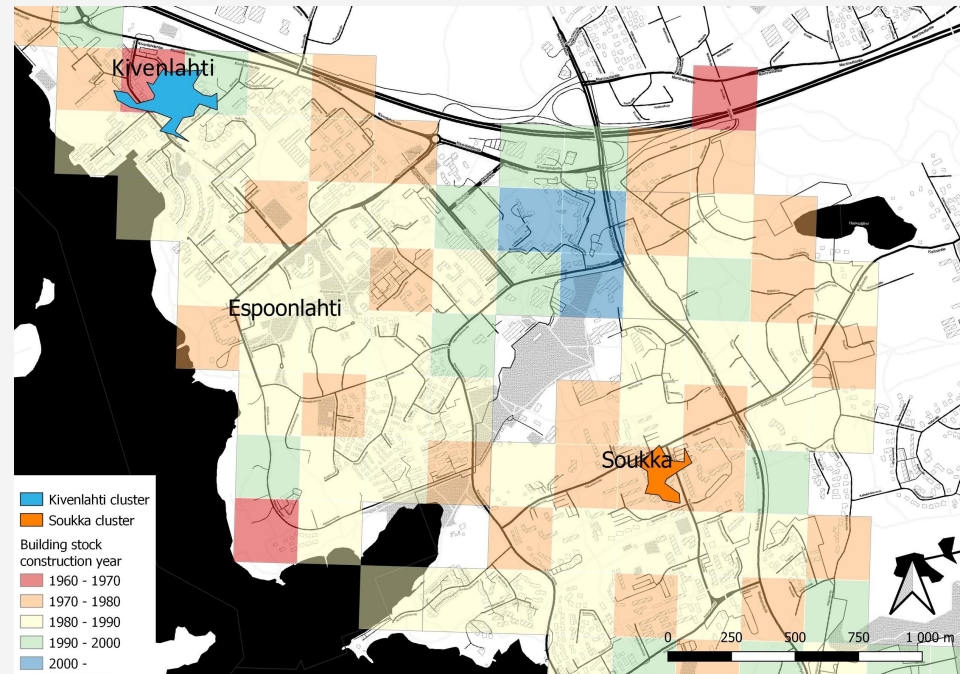
- the ageing building stock
- shabby image of the centers
- unsafe atmosphere

Modernization of the centers were seen solution for both safety and image issues

## Living Space (per person)

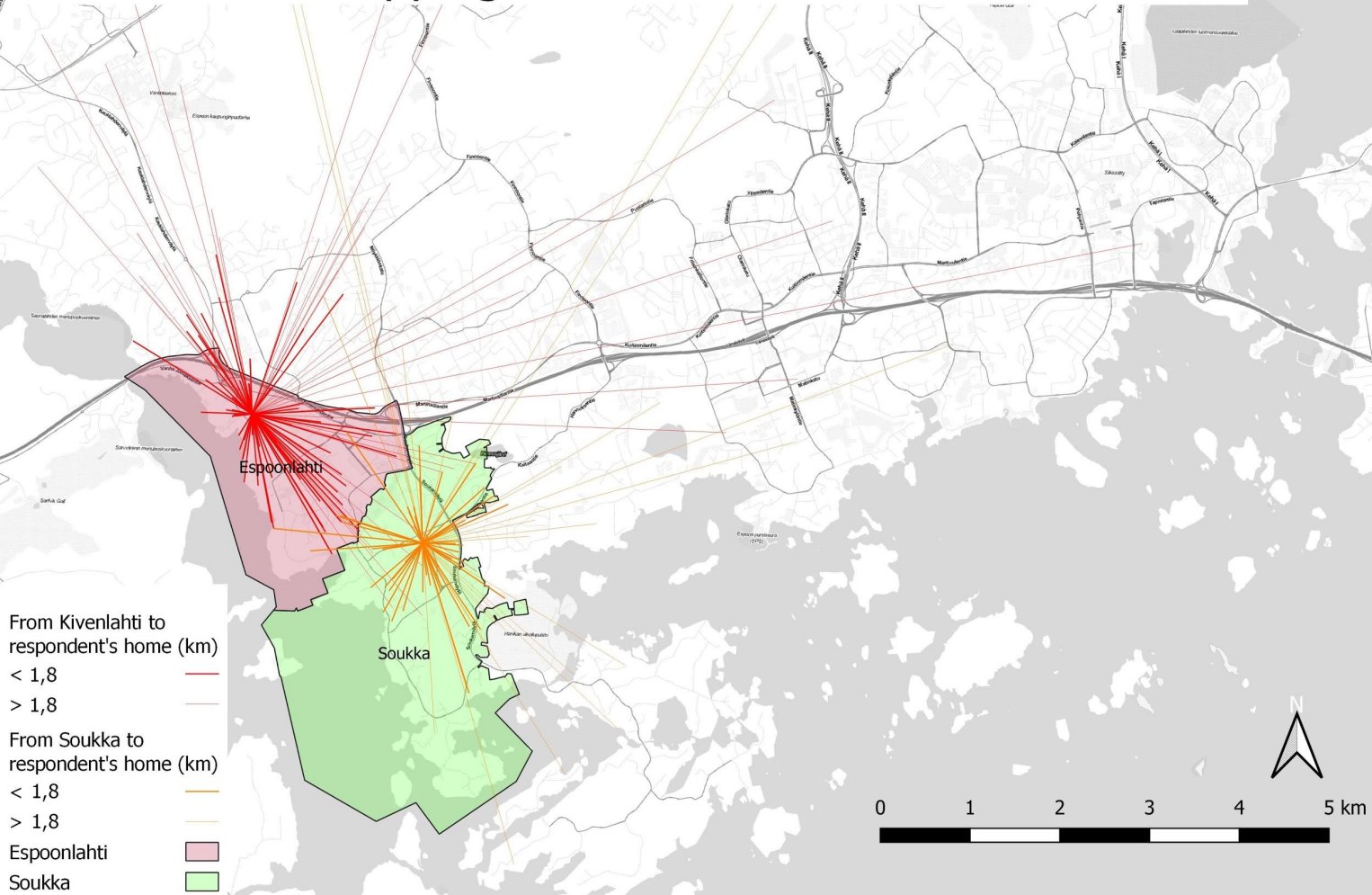


## Building Stock Construction Year





# Reach of the shopping centers of Kivenlahti and Soukka

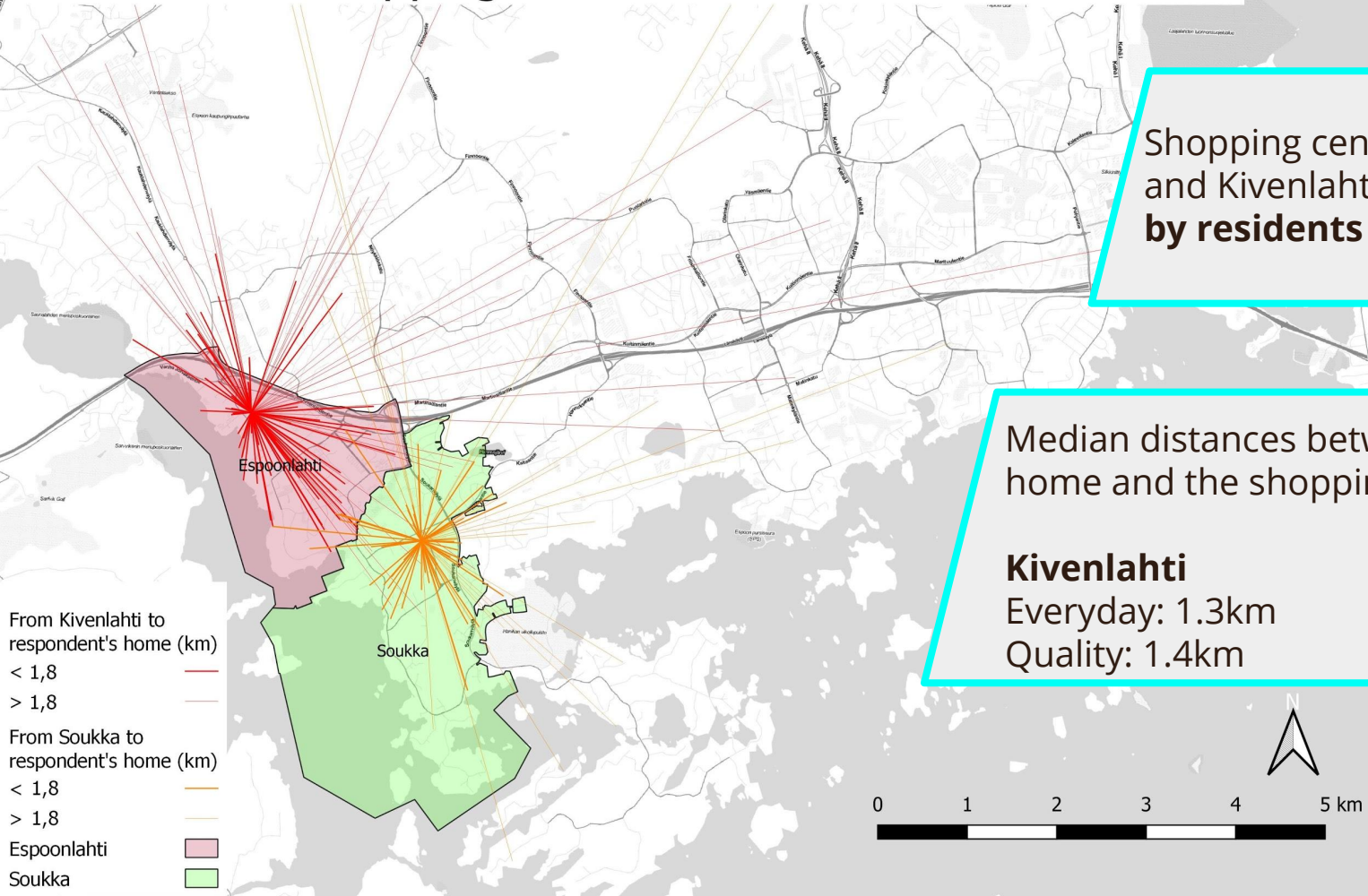


Shopping centers of Soukka and Kivenlahti are mainly used by residents living nearby

Median values between respondent home and the shopping center:

- Kivenlahti
- Everyday: 1,3km
  - Quality: 1,4km
- Soukka
- Everyday: 0,8km
  - Quality: 1,2km

# Reach of the shopping centers of Kivenlahti and Soukka



Shopping centers of Soukka and Kivenlahti are **mainly used by residents living nearby**

Median distances between respondent home and the shopping center:

<b>Kivenlahti</b>	<b>Soukka</b>
Everyday: 1.3km	Everyday: 0.8km
Quality: 1.4km	Quality: 1.2km

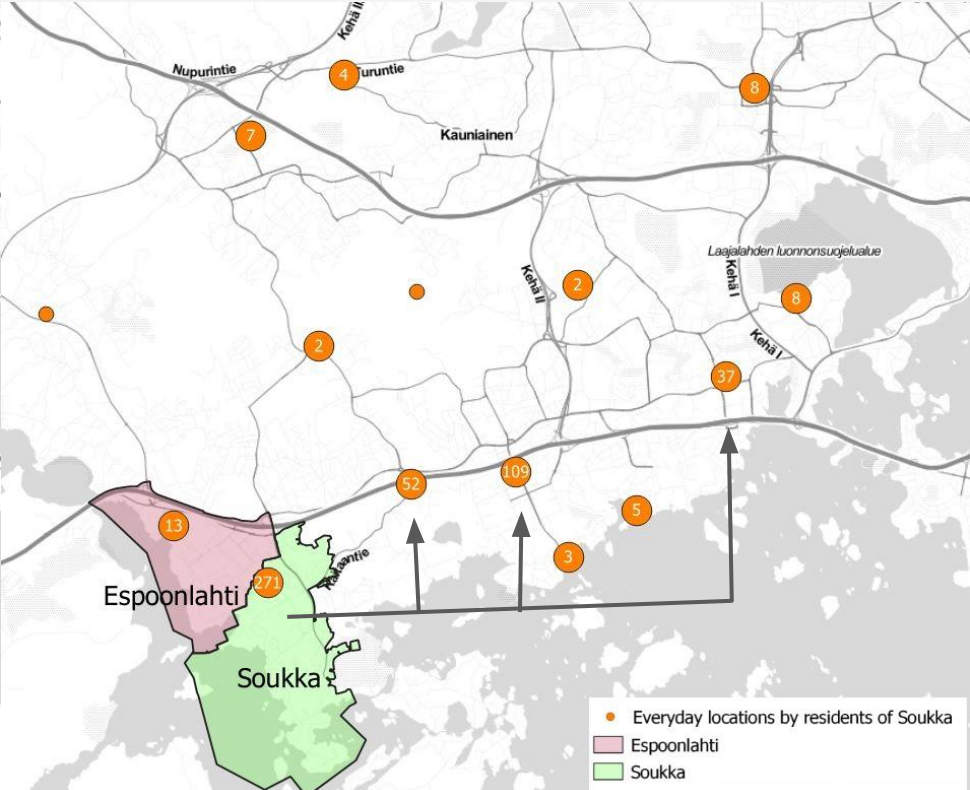
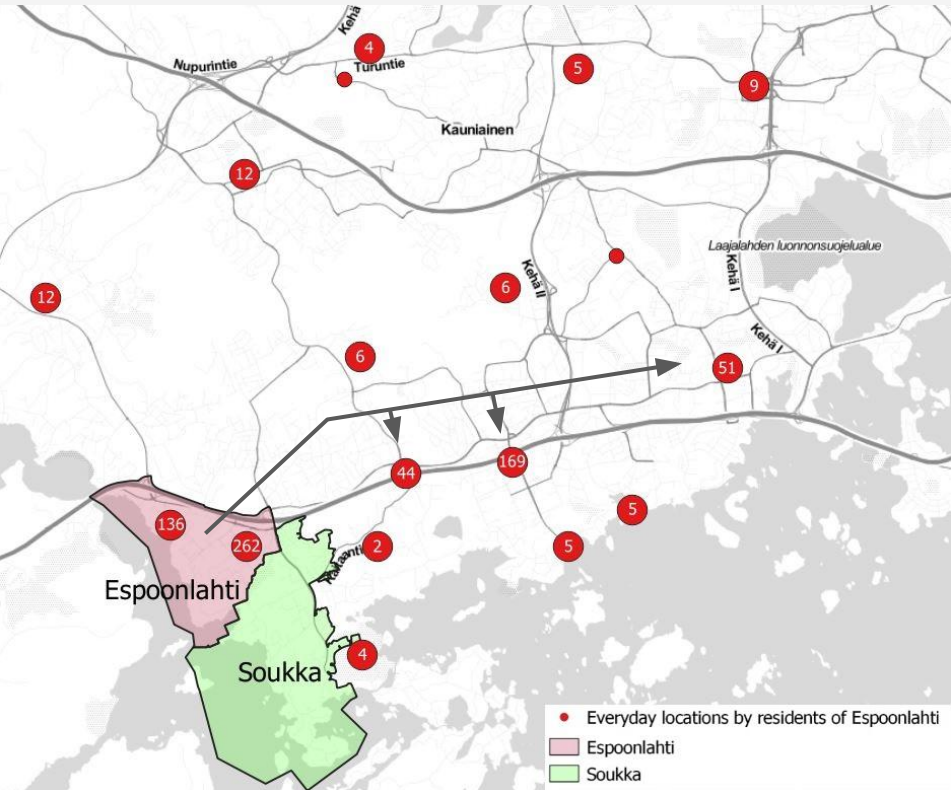
- From Kivenlahti to respondent's home (km)
  - < 1,8
  - > 1,8
- From Soukka to respondent's home (km)
  - < 1,8
  - > 1,8
- Espoonlahti
- Soukka



# Residents of Kivenlahti and Soukka actively use local services and environment. Matinkylä, Tapiola and Suomenoja are also active everyday hubs.

Everyday locations by residents of Espoonlahti

Everyday locations by residents of Soukka

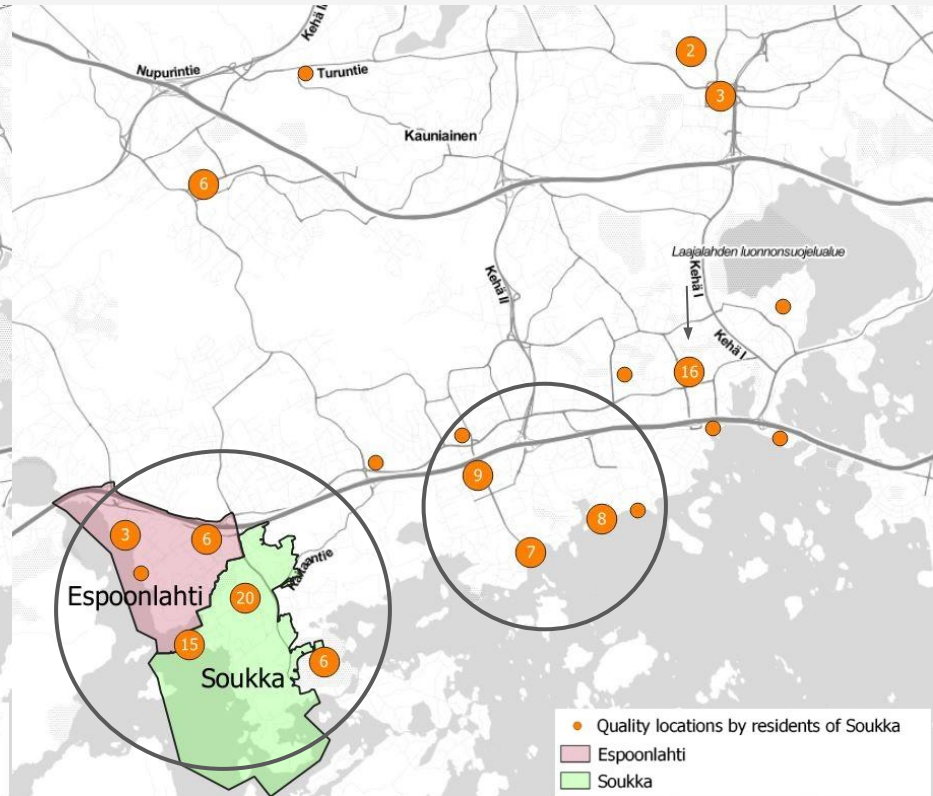
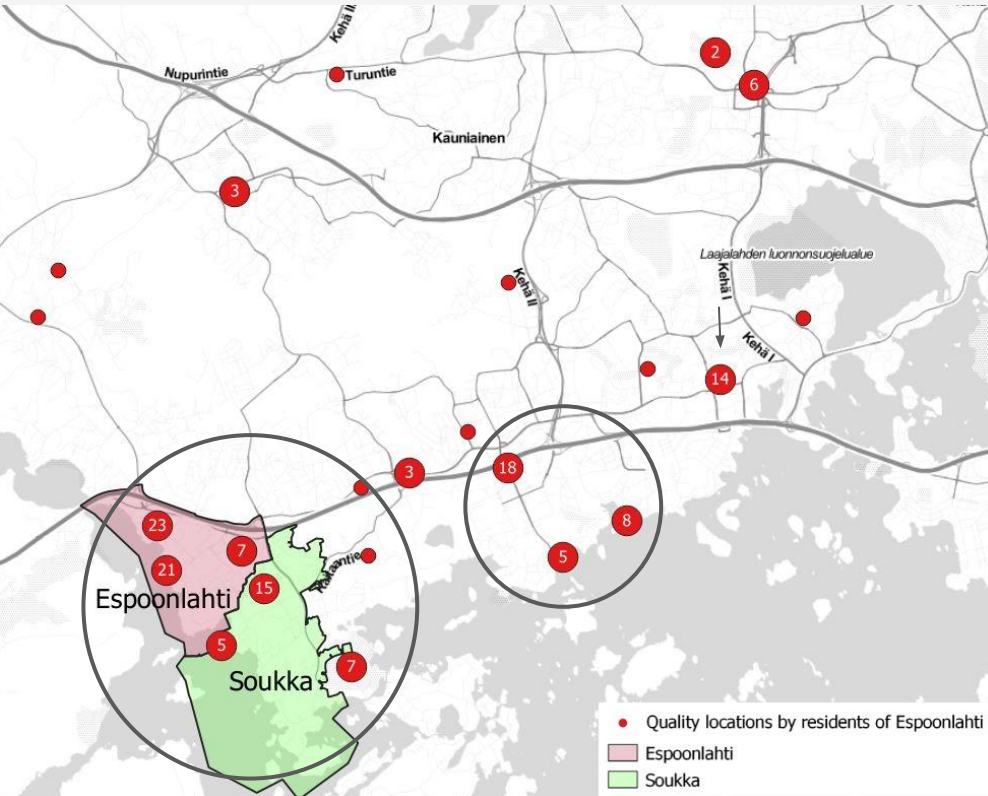




# Most quality places are marked in local environment. Matinkylä, Tapiola and the coastline south from them are also popular areas.

Quality locations by residents of Espoonlahti

Quality locations by residents of Soukka

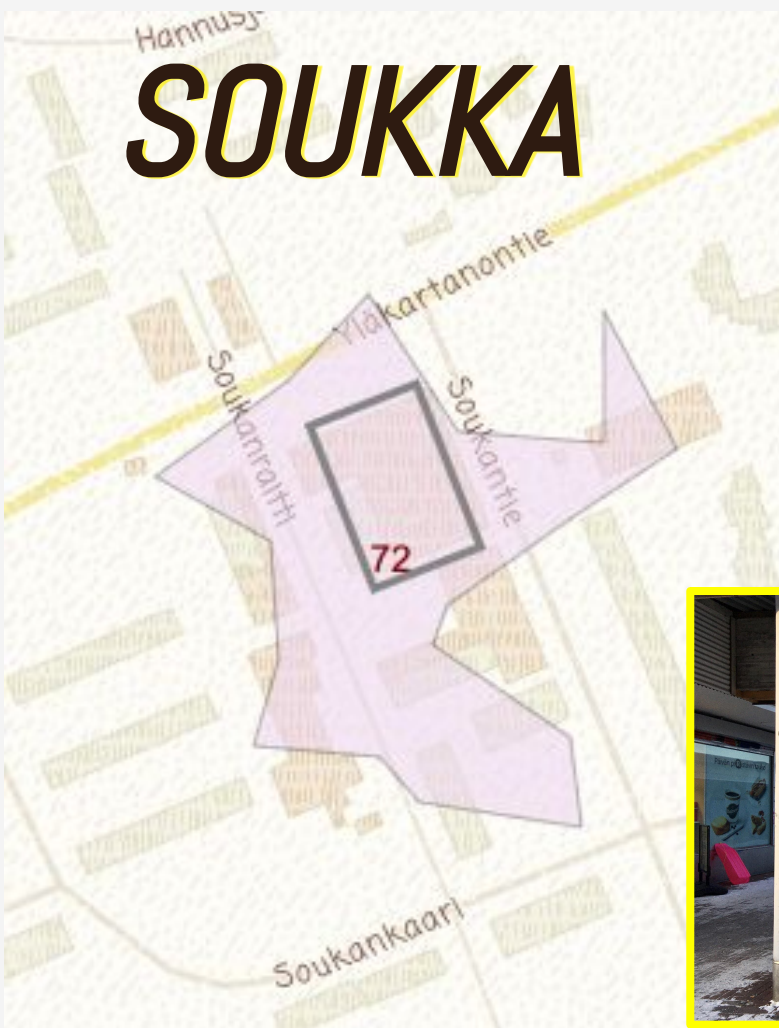




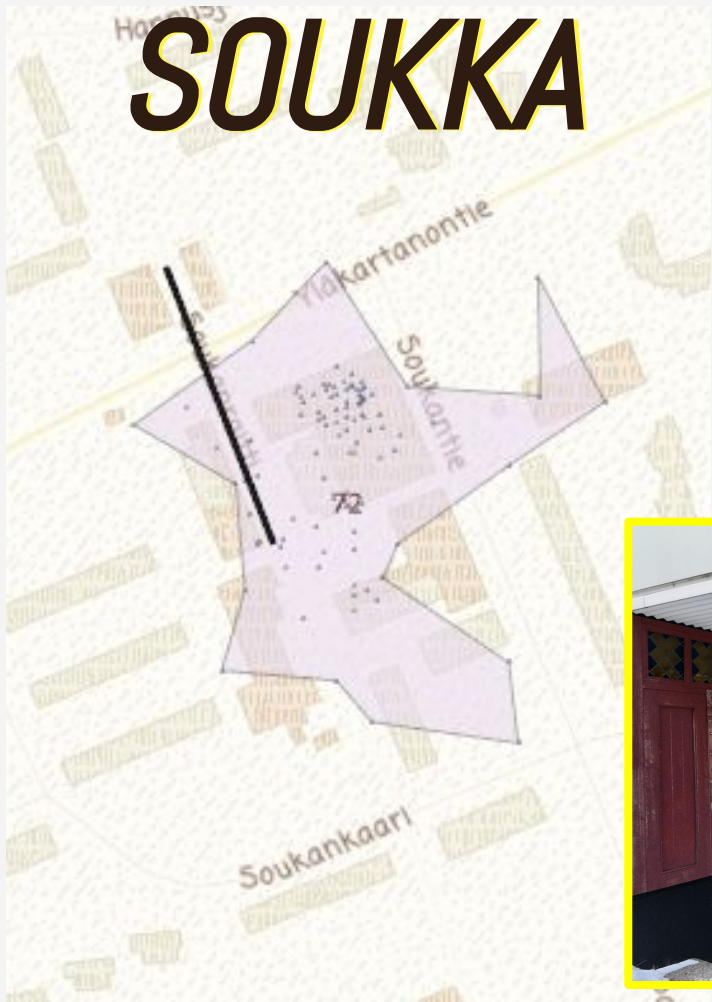
# SOUKKA



*"I have to visit here sometimes but the place is horrible and dirty. Shady, drunken people hanging around. Sometimes beggars too"*



# SOUKKA



*"Local bar, hangout place  
with friends"*





# KIVENLAHTI



*"We would like to have something else than bars"*

*Merenkäynti "drunken path"*



# KIVENLAHTI



*“Kivenlahti square is totally HORRIBLE place with drunk people and drug addicts”*





FULLY DECONSTRUCTED?

EMERGING SOCIAL ISSUES?

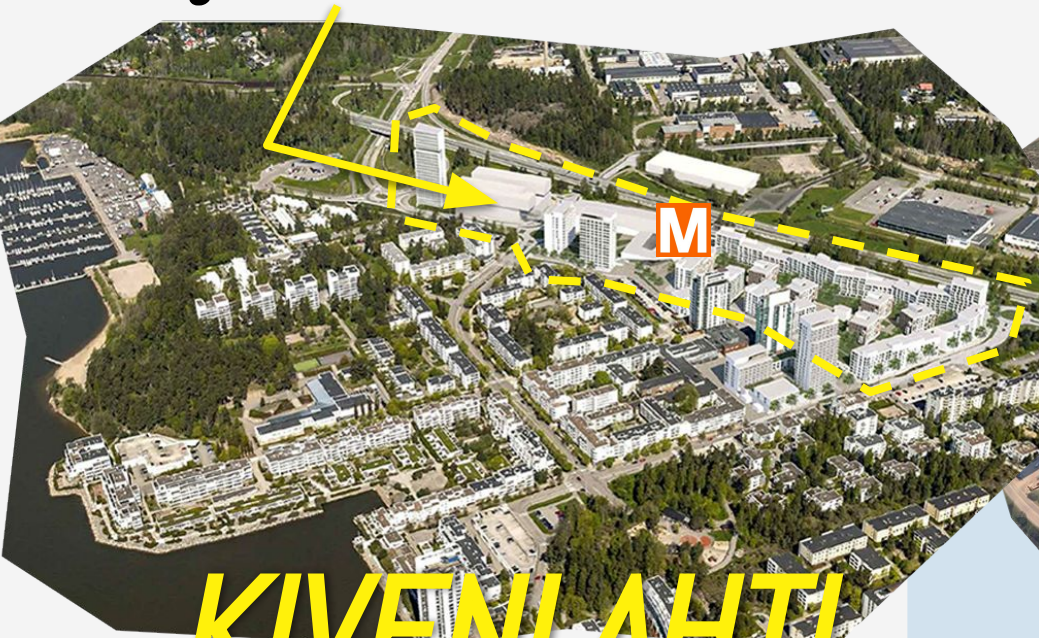
# THE FUTURE WITH METRO





# FUTURE PLANS

*Large new area next to old one*



**KIVENLAHTI**

*Whole area reconstructed*



**SOUKKA**

# ***FUTURE SCENARIOS***

## **RISKS**

**Former services and shops are  
not taken into account**

*Locals won't have places to meet  
anymore*

**Apartment prices raise and  
locals can't afford it**

**Whole identity of area changes**





# ***FUTURE SCENARIOS***

## **SOLUTIONS**

**Close co-operation with local shops and services**

**Integrating new and old areas and preserving some old structures**

*Already done on some level*

**Buildings will have mixed apartment types for different users**



## **POSSIBILITIES**

- Pleasing new materials**
- Increased accessibility**
- Metro improves mobility**

**SOUKKA**



# ***FUTURE SCENARIOS***

## **RISKS**

**Increased Inequality**

*Separation between  
old and new area*

**Overloaded walking paths**

**Decaying square area**



***KIVENLAHTI***

# ***FUTURE SCENARIOS***

## **SOLUTIONS**

**Facelift of old square area**  
*Including activities for square*

**New masterplan to  
improve walking**

**Relocation of cafes and pubs**



# ***KIVENLAHTI***



A winter evening scene in a city square. The ground is covered in snow. In the center, a large, illuminated wooden sculpture of a whale is the focal point. A person in a pink jacket is standing near the base of the whale, and another person in a blue jacket is standing to the right. In the background, there are modern buildings, bare trees, and strings of warm white lights hanging across the square. To the left, there is a food stand with a menu and a 'OPEN' sign. To the right, there is a wooden structure, possibly a bus stop or a utility box cover.

*Thank you!*  
*Questions?*

***KIVENLAHTI***

LIVELY NEW  
SQUARE CONCEPT