



ART & /IN ECOLOGY

Human-Non Human Interconnections
in Art, Visual Culture & Everyday Life.

Site specific theory in practice in Vuosaari
A two-period, ten credit module
Jan-April 2021

Source: [Google Maps](#)



Hello Everybody!

Here is a short introduction to this course 😊



The image is a satellite map of the Vuosaari area in Finland. A red outline highlights a specific region, labeled as the 'Contact Zone'. This zone encompasses the Vuosaari peninsula and extends into the surrounding water. Key locations within the zone include Vuosaari Golf, Vuosaaren satama (Vuosaari Harbour), and the residential areas of Vuotie and Vuosaarentie. Major roads like 101, 103, and 170 are visible. The map also shows surrounding areas like Uutela and various islands and waterways.

Vuosaari: A Contested Cultural/Ecological Contact Zone

Source: Google Maps



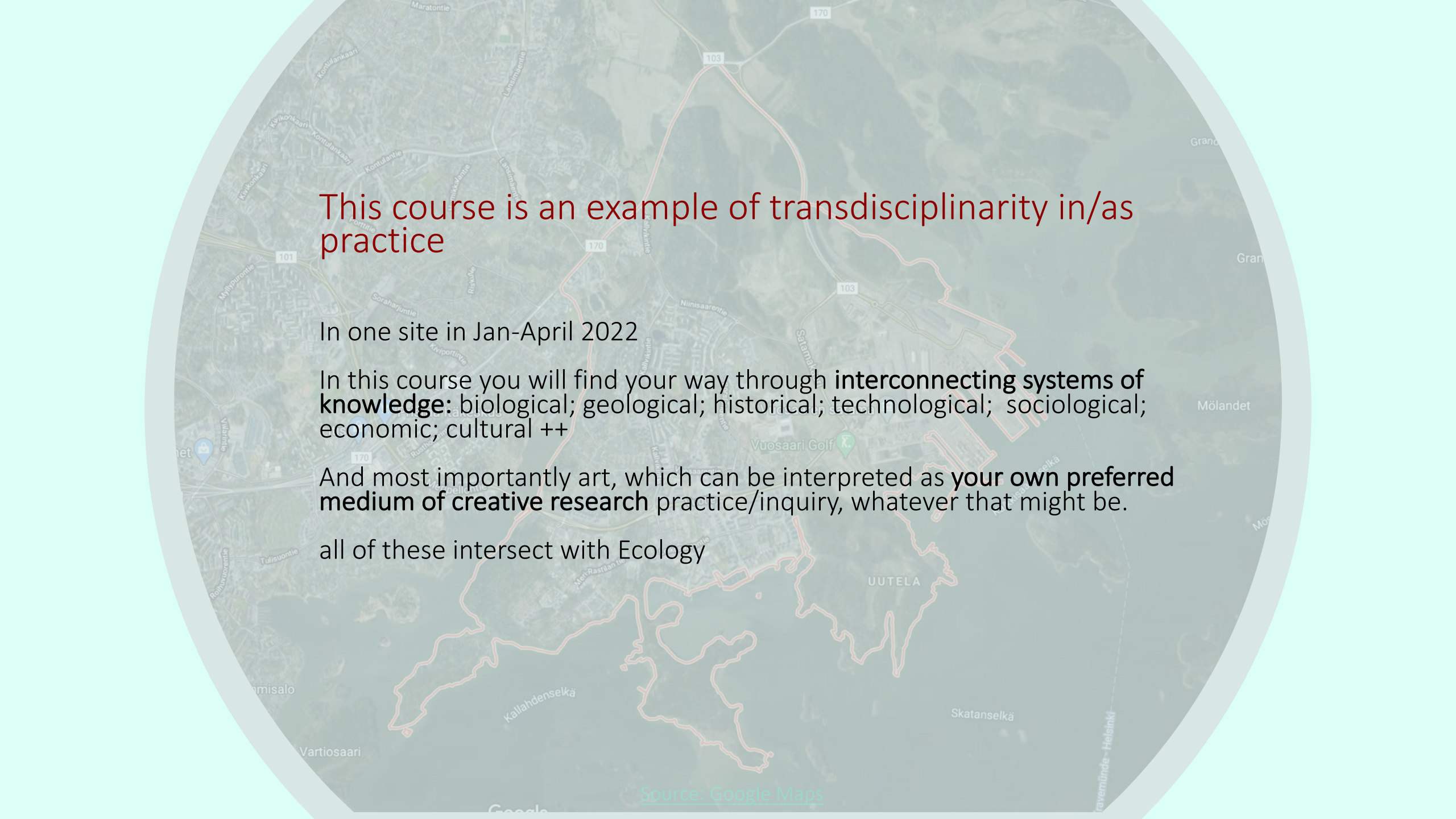
Defining a Contact- Zone

Mary-Louise Pratt: defines *contact-zones* as [sites where] “cultures, meet, clash and grapple with each other, often in contexts of highly asymmetrical relations of power, such as colonialism, slavery, or their aftermaths as they are lived out in many parts of the world today”.

Donna Haraway: in where species meet also refers to interspecies contact zones/ecological intersections which she also calls *ecotones* “edge effects [...] where assemblages of biological species form outside their comfort zones” This can refer to, for example border zones between one ecological system and another, or describe ways that native and ‘non-native’ species constitute each other or between dominant and marginal beings,

[Link to Source Haraway When Species Meet p216](#)

[Link to Source Mary-Louise Pratt](#)



This course is an example of transdisciplinarity in/as practice

In one site in Jan-April 2022

In this course you will find your way through **interconnecting systems of knowledge**: biological; geological; historical; technological; sociological; economic; cultural ++

And most importantly art, which can be interpreted as **your own preferred medium of creative research practice/inquiry**, whatever that might be.

all of these intersect with Ecology

URBAN ECOLOGIES:

Situated, always in process
interconnections of human and
non-human environments, natures
cultures and politics.

Including ecologies of things
apparently out of place

*Ernst Haeckel Kunstformen der
Natur* (1904), plate 93:
Mycetozoa public domain

We will discuss many definitions of ecologies
nature-culture interconnections and politics
thereof in this course.

However, as contested* a place to start as any is
Ernst Haeckel as, as many of you will already know,
the term oekologie was first applied by the 19th
century art/scientist and philosopher as a way of
thinking about living being's relationships both to
organic and inorganic environments.

Of relevance to this course, on urban ecology term
has a particular relationship to placemaking as it
derives etymologically (as does indeed the eco in
ecnoomy from the **Greek oikos, meaning the basic
unit of society, the "household," "home," or "place
to live."**

Haeckel of course is also known for his sublime
drawings and paintings of microscopic creatures.

* Haeckel was also like many contemporary artists
fond of speculation. Many of his wilder theories
have been resoundingly rejected, for example
Haeckel's theories on race, which were were
selectively taken up by Nazi ideologues, even as the
Nazi state rejected other aspects of Haeckel
practice. Thus a good reminder before we start how
science is and has always been cultured, how
culture is inextricable from politics. And how art is
never innocent!

On art/practice led inquiries

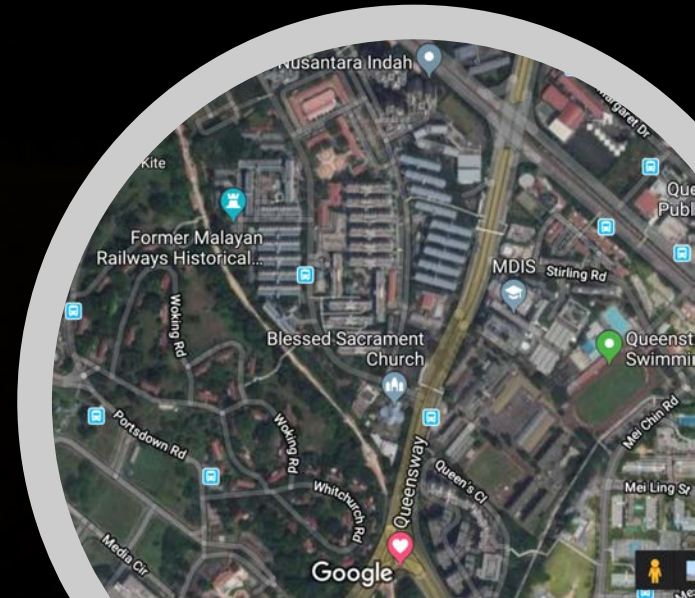
The great thing about art practice (or at least the art practice that I am interested in), is that when you are in flow, you can find meaning and ways of working with and from anything: Any material, object, space, any existing form of knowledge, be it formal or informal, “popular” or academic.

The creative research practices that I am interested in are “ecological” in that they are about staying curious and making connections: Between the sensorial and the conceptual; Between neurons and mycological networks; Between sound and shadows; Between birdsong and human language; Between humans and non human migration; Between a cup of coffee and colonialism; Between the speed of our internet and our fingers on the keyboard and the hands attempting to cleanse the soil in Chinese landfills.

With art/practice led inquiries, we get to make poetic and political connections and alliances that are perhaps not permitted in streamlined modern disciplines. We get to play with the children our parents warned us against.

These processes are not innocent. We are also products of modernity and our speculations and imaginings do not necessarily always lead us to emancipatory, democratic places. But I hang on to art as I feel that combination of artistic methods and critical reflexivity enables a potentially fully embodied a toolkit with which to rethink human’s place in this world

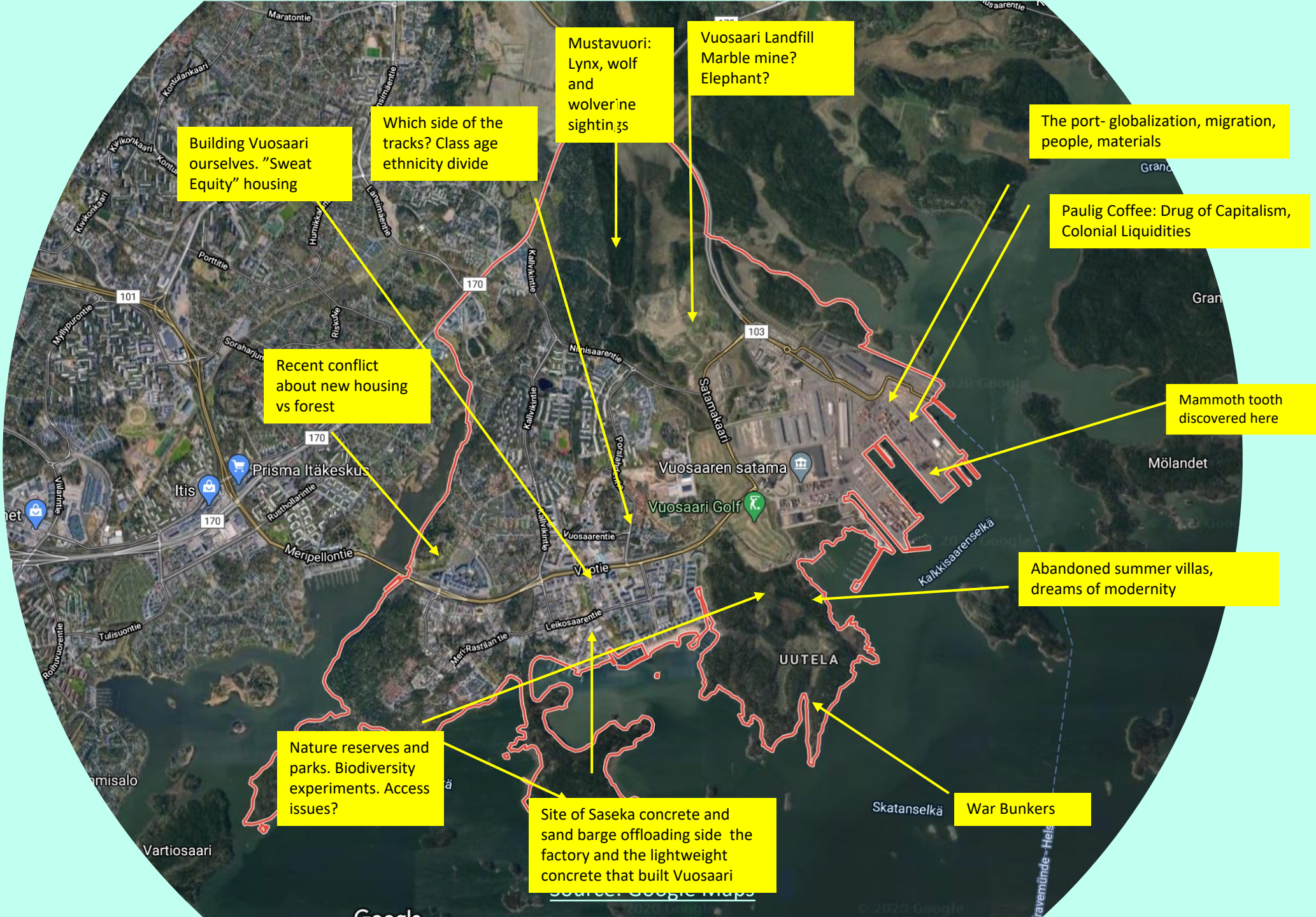
Inspired by Migrant Ecologies Project Methods



• Stills from Railtrack Songmaps 2013-2021 and the film {If your bait can sing, the wild one will come} Like Shadows Through Leaves 2021 by the [Migrant Ecologies Projects \(link\)](#)

“Finland seems very small But Vuosaari seems very big”

Anna Kozonina 2021 😊



Building Vuosaari ourselves. "Sweat Equity" housing

Which side of the tracks? Class age ethnicity divide

Mustavuori: Lynx, wolf and wolverine sightings

Vuosaari Landfill Marble mine? Elephant?

The port- globalization, migration, people, materials

Paulig Coffee: Drug of Capitalism, Colonial Liquidities

Recent conflict about new housing vs forest

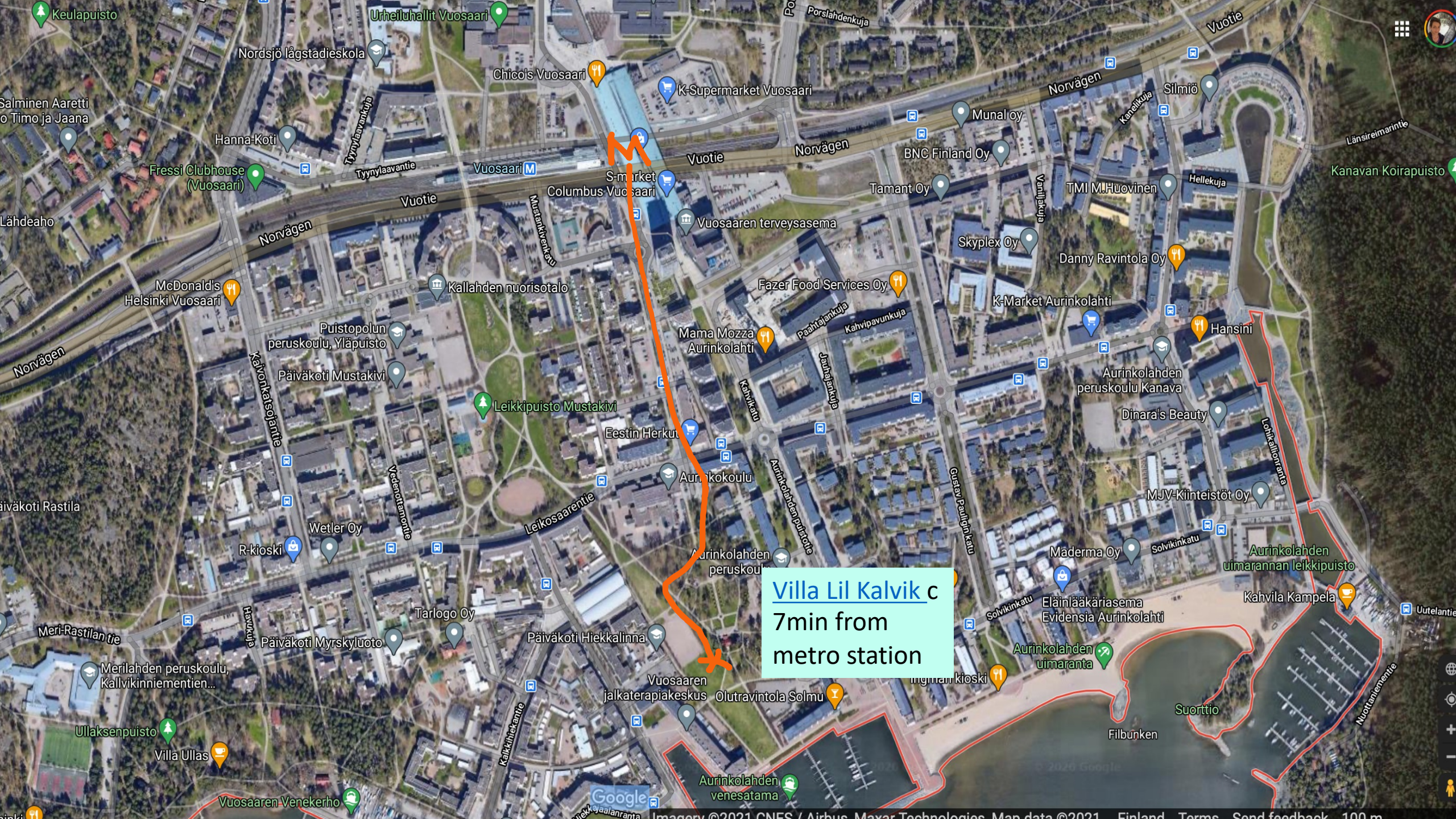
Mammoth tooth discovered here

Abandoned summer villas, dreams of modernity

Nature reserves and parks. Biodiversity experiments. Access issues?

Site of Saseka concrete and sand barge offloading side the factory and the lightweight concrete that built Vuosaari

War Bunkers



Villa Lil Kalvik c
7min from
metro station

Vuosaaren
jalkaterapiakeskus

Olutravintola Solmu

Aurinkolahden
venesatama

Aurinkolahden
uimarannan leikkipuisto

Kahvila Kampela

Filbunken

Suortio

Google