



Thinking Tools

Module 3 – The Extended Mind

*Lauri Järvilehto, PhD
Professor of Practice*

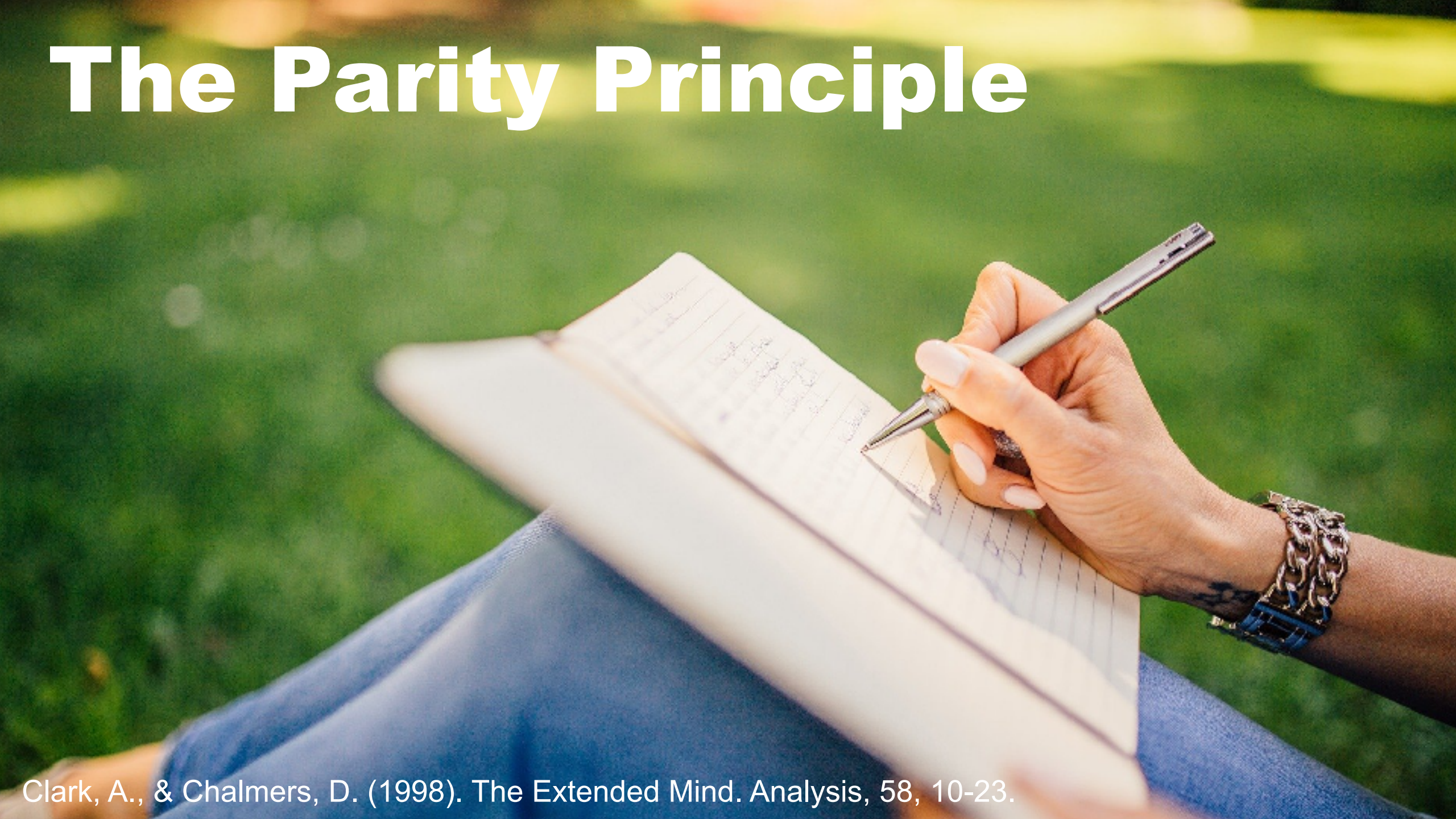


Where Does the Mind End and the Rest of the World Begin?

- Mind is the brain
- Map is not the territory, the world begins in our perception
- Hallucinated image, colors, other people
- There is no limit, our senses and experiences define our perception of the world
- It's always a meeting, a relationship
- Material conceptual
- Dependent on perception and awareness of the world around
- Closely intertwined and entangled

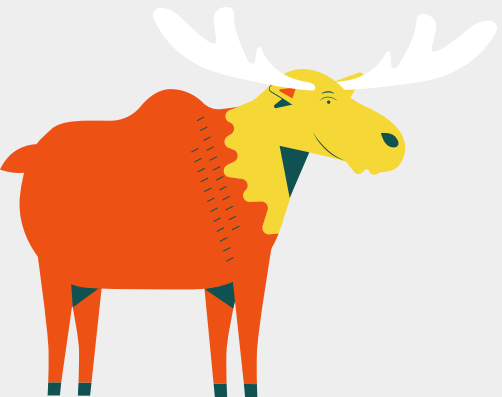
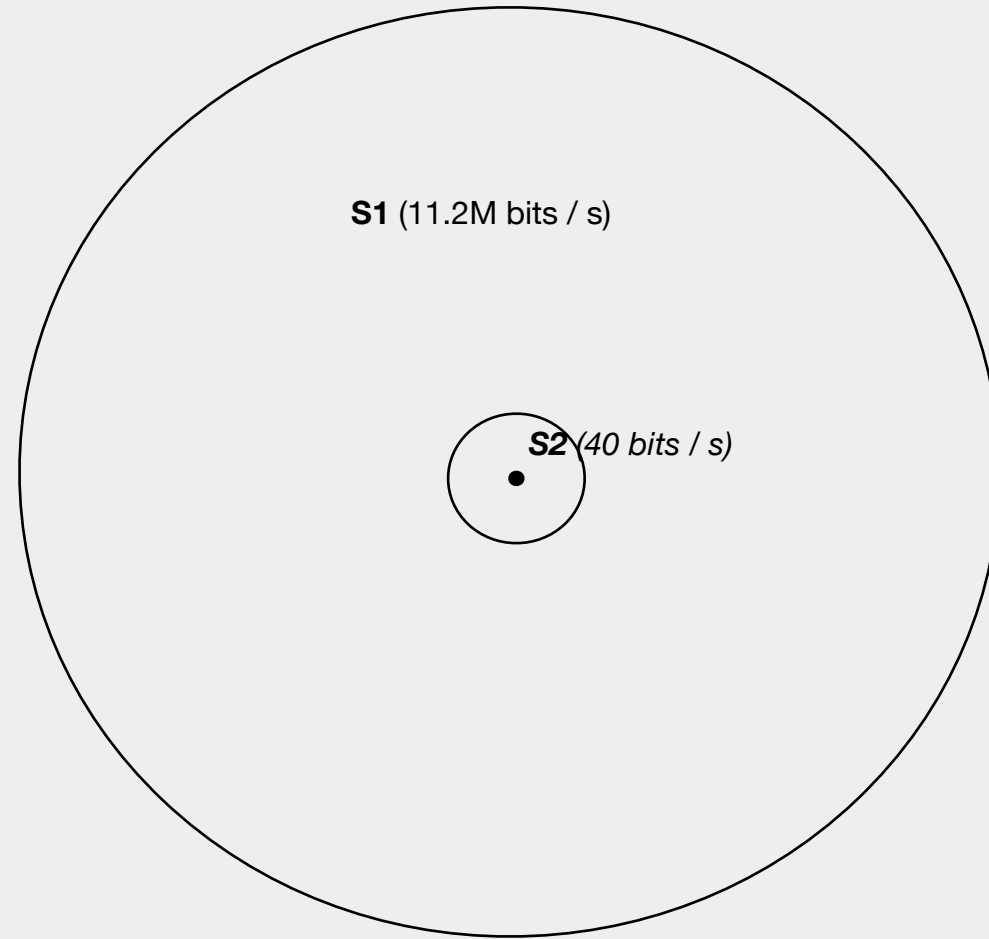


The Parity Principle



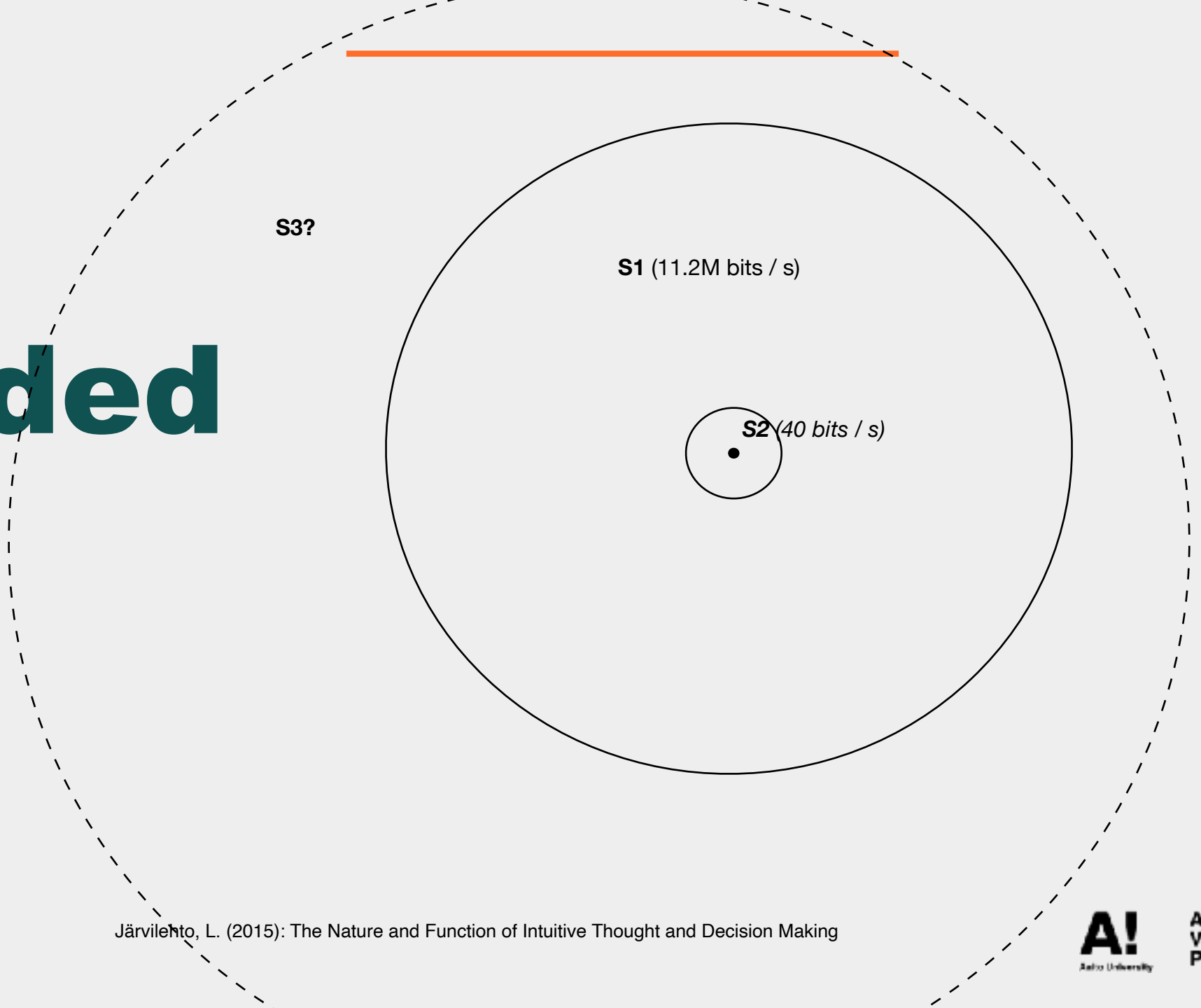
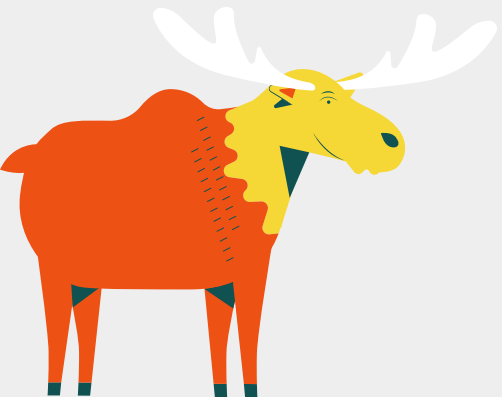
Clark, A., & Chalmers, D. (1998). The Extended Mind. Analysis, 58, 10-23.

Dual Processing



Järvilehto, L. (2015): The Nature and Function of Intuitive Thought and Decision Making

The Extended Mind



Järvelin, L. (2015): The Nature and Function of Intuitive Thought and Decision Making

Break

Find us:
Aalto Ventures Program



————— *avp.aalto.fi* —————



**Aalto
Ventures
Program**

Idea Cloud

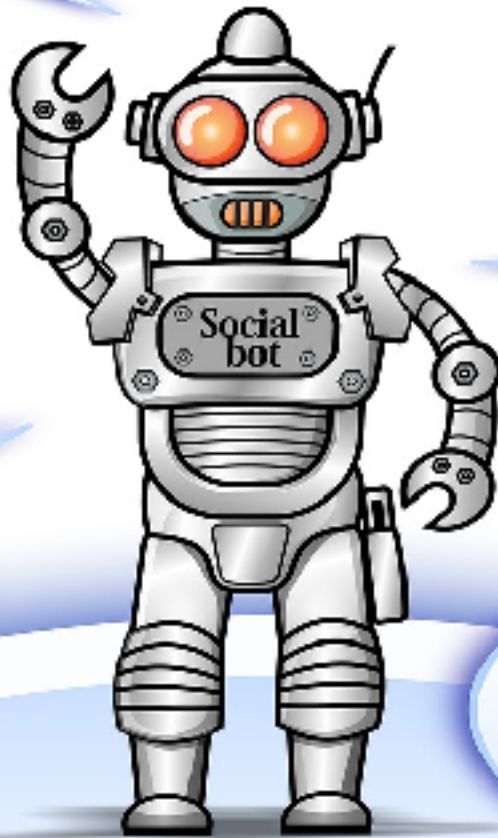


- 1. Always available**
- 2. Structured for quick access**
- 3. As fast as biological memory**



Thinking and the Environment

Filtering Social media





Redirecting Thinking

TICK

I'm worried that I won't pass the next exam.

TOCK

I'll make more room in my calendar for additional studies.

Workshop Briefing

- Idea Cloud
- Tick Tock
- Failure Management



Thank You



Find us:
Aalto Ventures Program



avp.aalto.fi



Aalto
Ventures
Program