

13.9.

9:15

Luento

**100 VUOTTA MAISEMA-ARKKITEHTUURIA:
MITÄ – MISSÄ – MILLOIN?**

10:15

Luento

MAISEMA(-ARKKITEHTUURI) TAITEEN KENTÄSSÄ

13:15

Tuntitehtävä 1

Tehtävänannot

**SEMINAARIESITELMÄ
KIRJOITUSHARJOITUS**

MFO Park

Oerlikon Zürich 2002
Burckhardt + Partner
Raderschallpartner

6.9.

**moderni
modernisaatio
moderniteetti
modernismi**



6.9.

Le Corbusier (1887-1966)
Villa Savoye,
Poissy-sur-Seine 1929-31



6.9.



Le Corbusier (1877-1966)
Chapelle Notre Dame du Haut,
Ronchamps 1950-54



13.9.

Nykyajan maisema-arkkitehtuuri

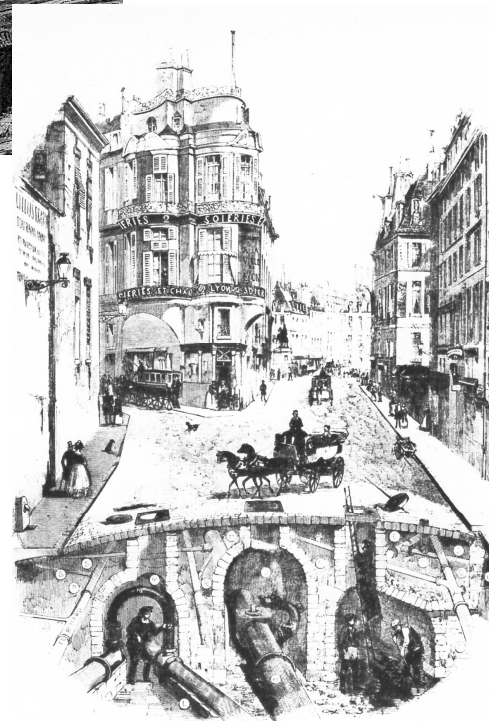
LUENTO 2

100 vuotta maisema-arkkitehtuuria

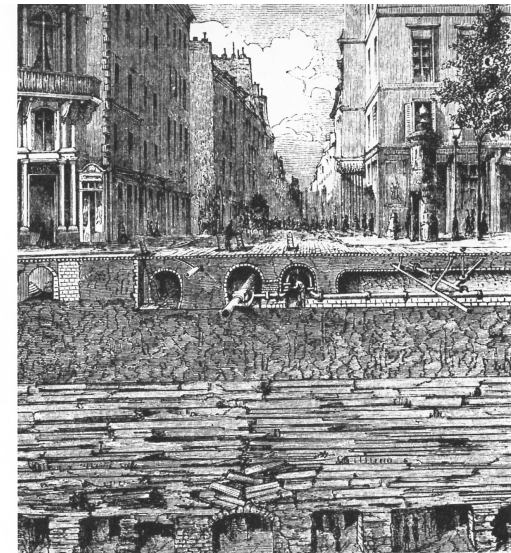
mitä – missä – milloin ?



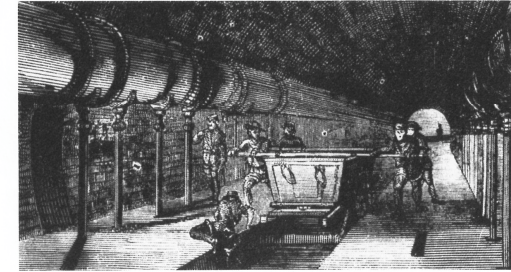
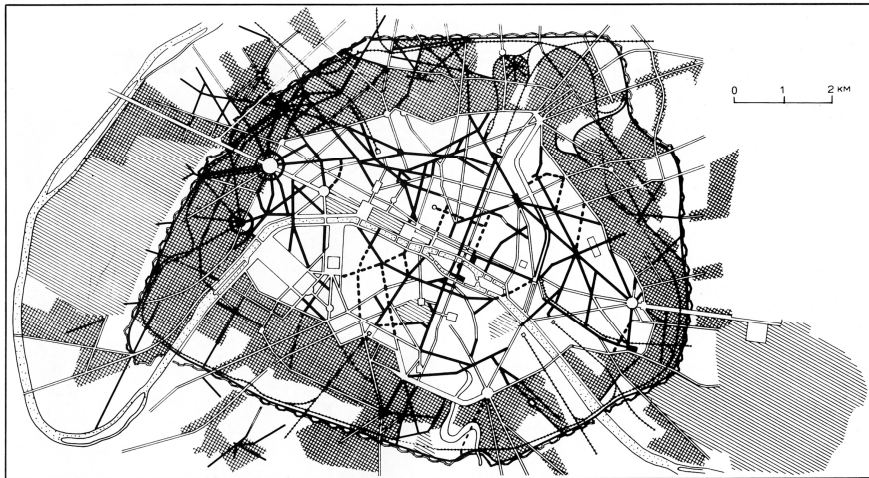
Baron (Georges-Eugène) Haussmann (1809-1891)
Préfet de la Seine 1853-70



71



72





**Parc des Buttes-Chaumont
Pariisi 1863-67
Jean-Charles Adolphe Alphand (1817-1891)**



Frederick Law Olmsted (1822-1903)

**The Metropolitan Park System of Boston
"Emerald Necklace" 1884-86**

= LANDSCAPE ARCHITECTURE



ASLA

**American Society of Landscape Architects
Degree program, Harvard University**

**1899
1900**

1946

SPAFTA

Suomen puutarha-arkkitehdit – Finska Trädgårdsarkitekter ry

1948

IFLA

International Federation of Landscape Architects

1964

Puutarhasuunnittelun opetus alkaa

Helsingin yliopisto / maat.-metsät. tiedekunta

1969

Maisemasuunnittelun opetus alkaa

TKK / Arkkitehtiosasto

1983

Maisemasuunnittelun suuntautumisvaihto perustetaan

1989

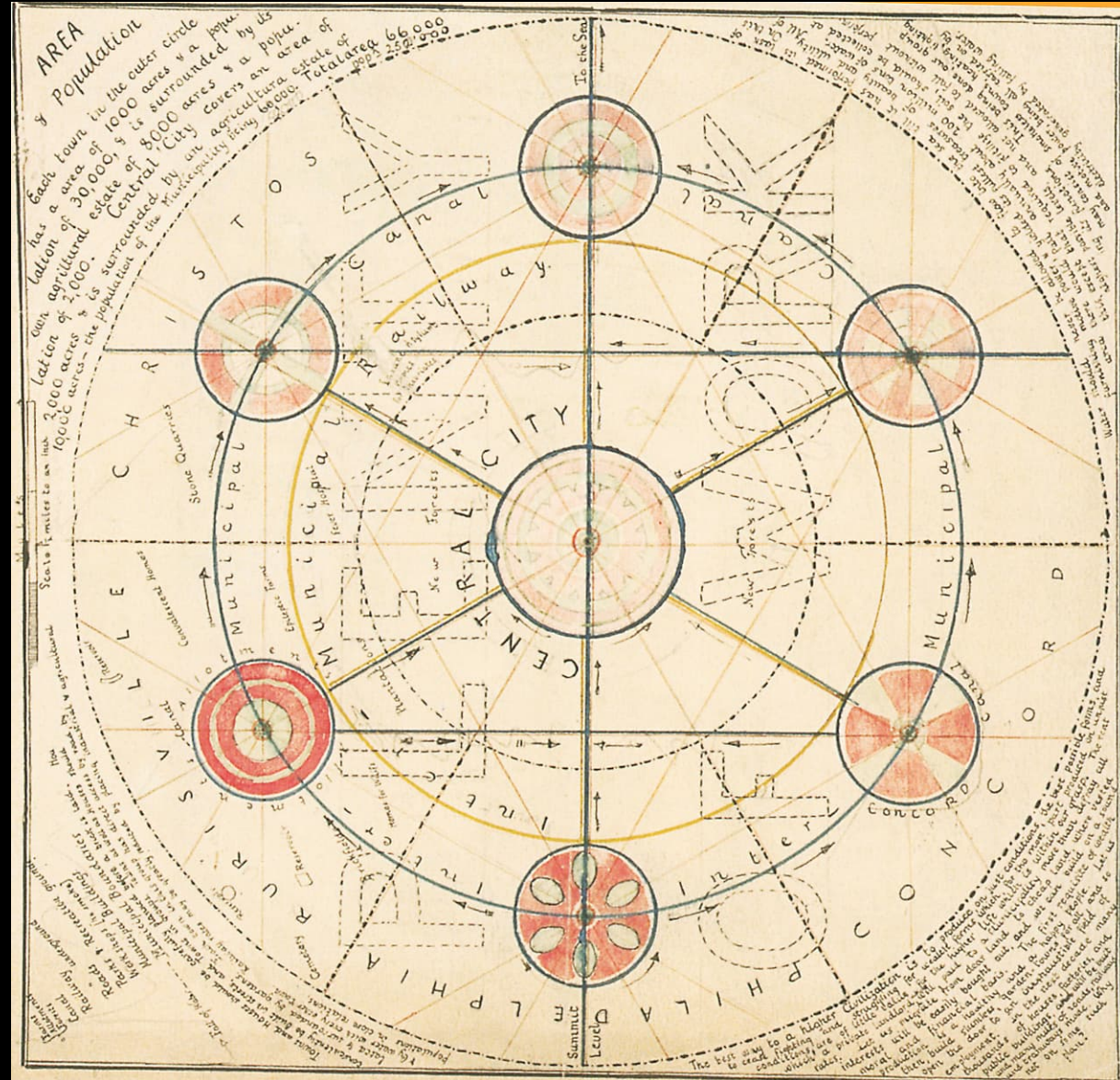
Maisema-arkkitehtuurin koulutusohjelma perustetaan

1900

**Ebenzer Howard
(1850-1928)**

**To-morrow:
A Peaceful Path to Real
Reform
1898**

**Garden Cities of To-morrow
1902**



1900

Hamstead Garden Suburb
Aloitettu 1907
Raymond Unwin, Barry Parker



1900

**Godington gardens 1902
Reginald Blomfield (1856-1942)
The Formal Garden in England 1892**



1900

NOLIN



I detta äldre fotografi av trädgården med Janusbysten på Tjolöholms slott syns tydligt att detta parti skulle tjäna som en förmedlande länk mellan den ordnade slottsmiljön och det till synes oordnade omgivande kulturlandskapet.

mytologiska gestaltning som asken infogades i är ett mycket ovanligt grepp i Wahlmans skaparvärld. Asken har senare tagits bort och därmed har de mytologiska och symboliska dimensioner försvunnit.

Från de litet slutetivteknikvisar en stenbelägg till en absogen i steyttre forlandskap



Catharina Nolin
En svensk lustgårdskonst
Lars Israel Wahlman som trädgårdskonst

ett spekten av en upp hugrdens klipperti:

et där aviner e står milde a silar mellan

Gå vi d torna s med br Janus rosenodlarens ansikte. in under de låga ekarnas båghvalf. Än stans land och haf med bölande lurar och yrande skum.



Centralt i Lars Israel Wahlmans teckning av stora terrassens östra avslutningsparti står den ask som Wahlman kallade Yggdrasil.



Wahlmans teckning av partiet med Janusfiguren visar att det var tänkt som en övergång mellan det ordnade och det oordnade.

1900



Tjolöholm slott 1898-1904
Kungsbacka, Halland
Lars Israel Wahlman (1870-1952)

1900

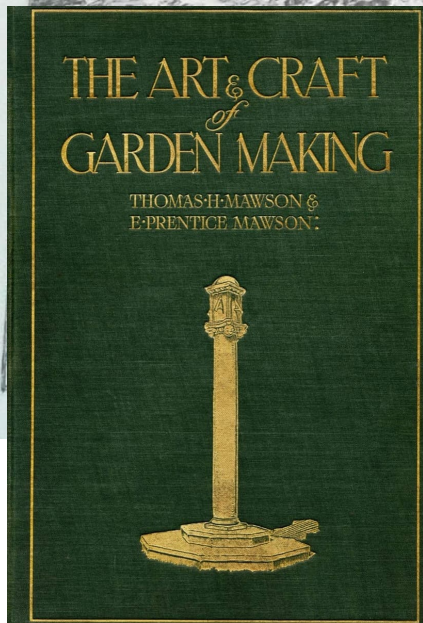
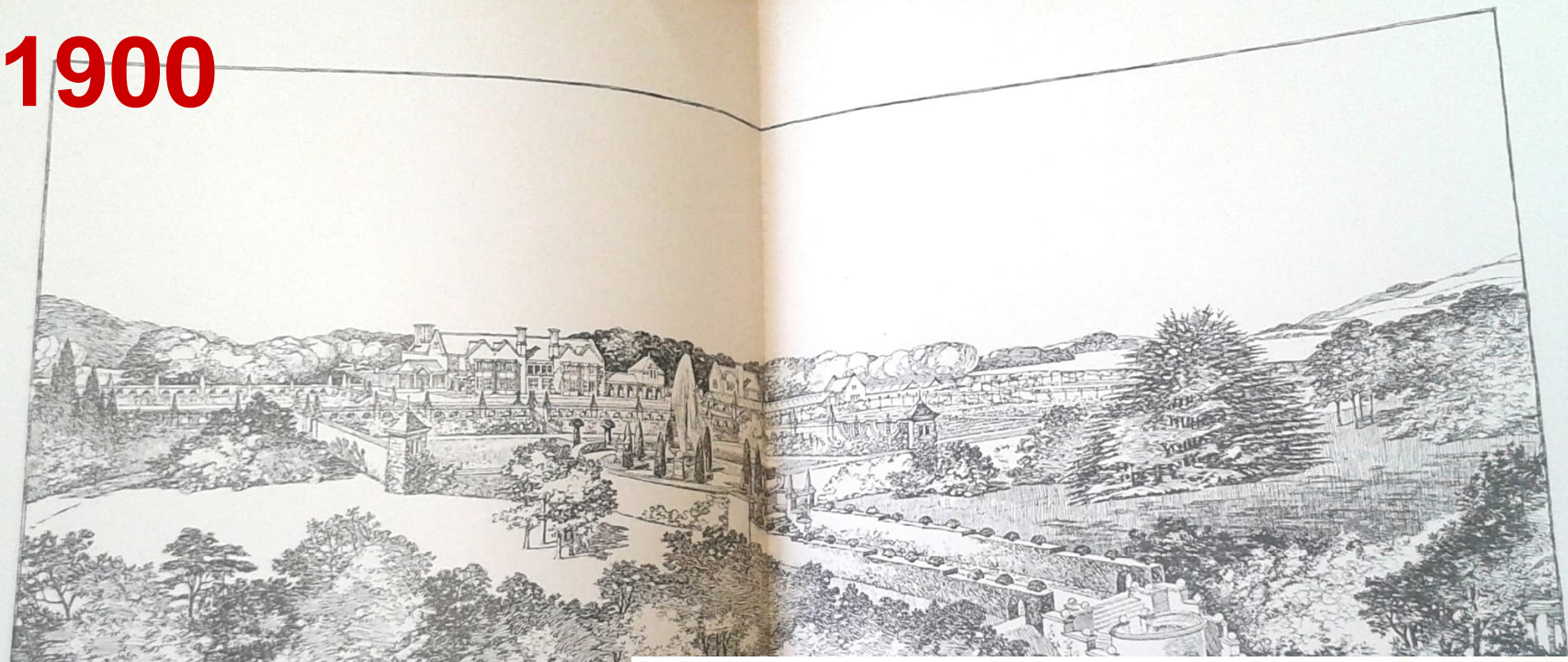


Tjolöholm slott 1898-1904
Kungsbacka, Halland
Lars Israel Wahlman (1870-1952)

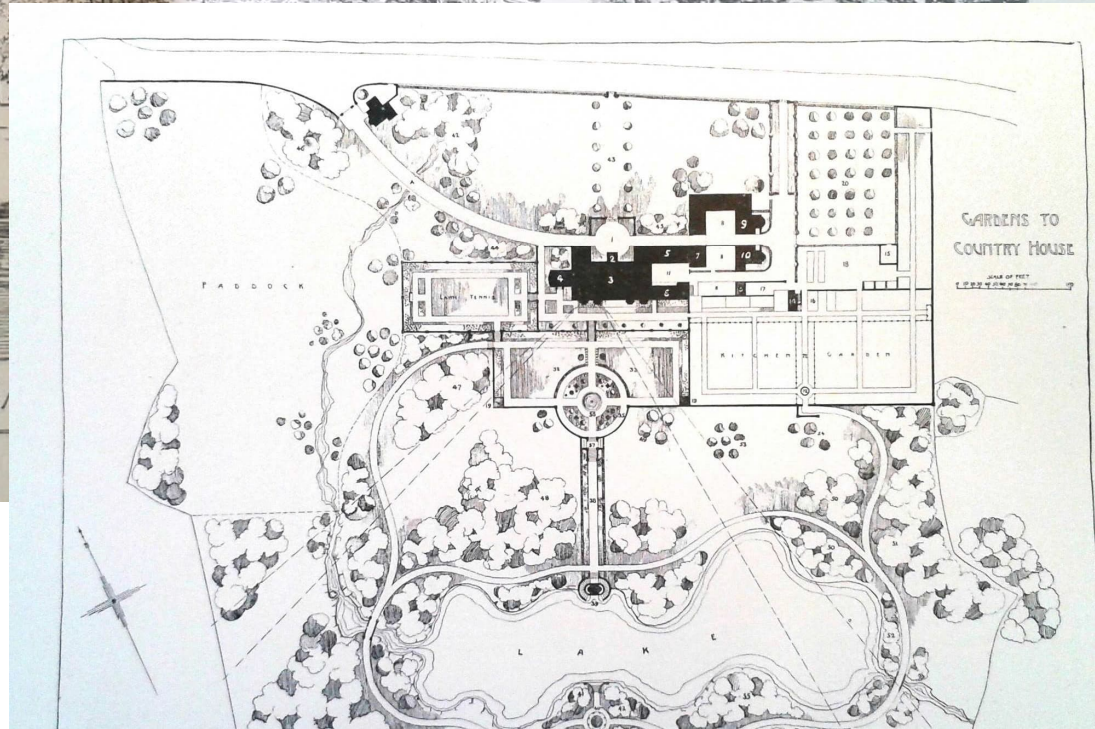
1900
03

Se på 8 d. t. Dist

1900



HOUSE AND G



1900

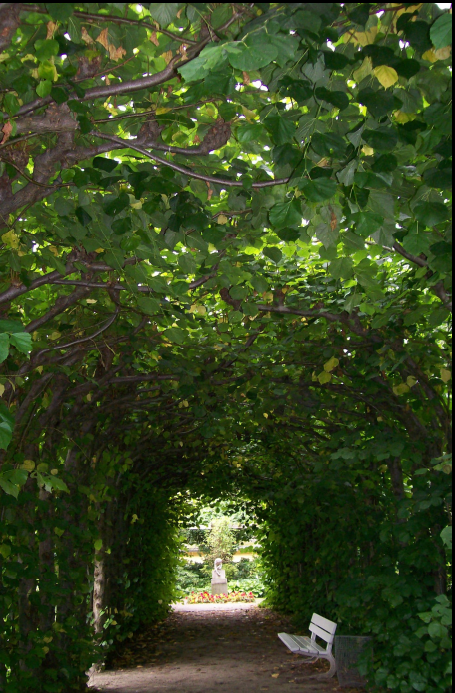
”NATURGARTEN”

”WILD GARDEN”



**Willy Lange (1864-1941):
Gartengestaltung der Neuzeit, 1907**

1910

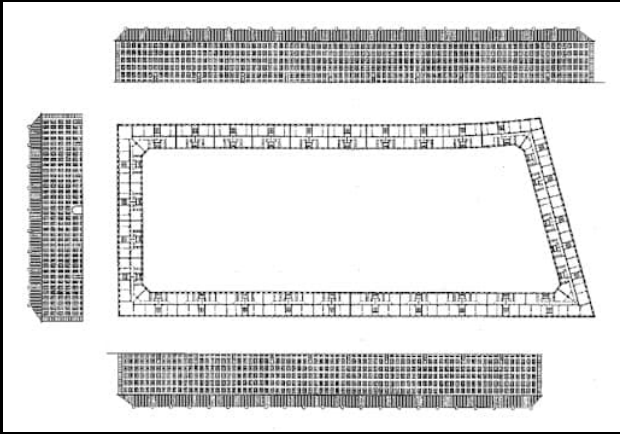


Schulgarten, Lûbeck 1913
Harry Maasz (1880-1946)

1910



1920



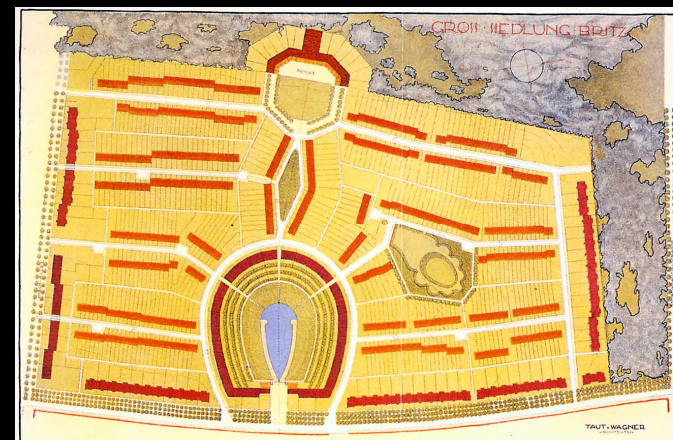
Hornbækhus, Kööpenhamina
1922-23
Kay Fisker (arkkit.)
G.N. Brandt (mais.arkkit.)

1920

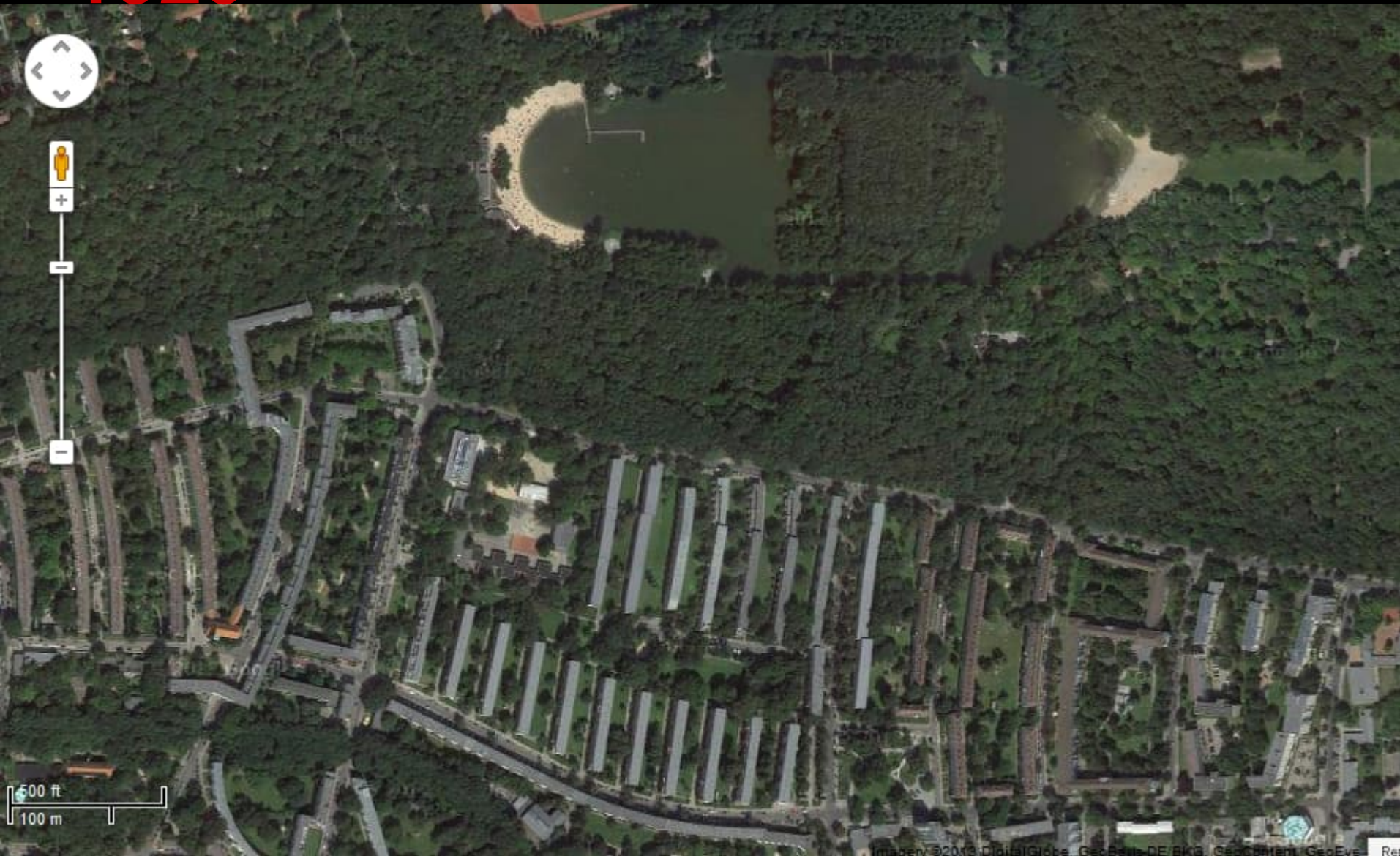


**Gross-Siedlung Britz: Die Hufeisensiedlung
Berlin 1925-27**

**Martin Wagner
Bruno Taut
Leberecht Migge**



1920



Großsiedlung Siemensstadt 1929-31

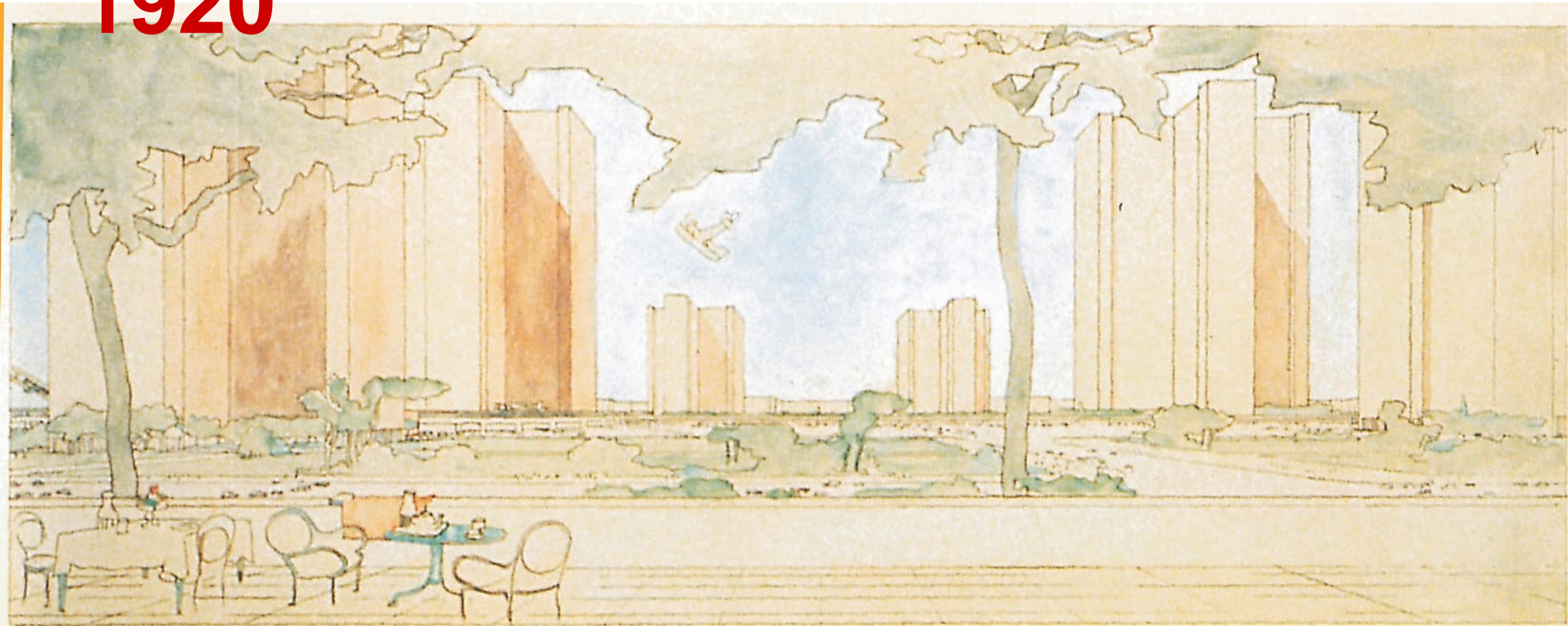
**Hans Scharoun, Fred Forbat, Otto Bartning, Walter Gropius, Paul Rudolph Henning, Hugo Häring
Leberecht Migge (1881-1935)**

1920



Großsiedlung Siemensstadt 1929-31
Leberecht Migge (1881-1935)

1920



**Le Corbusier:
Ville contemporaine, 1922**

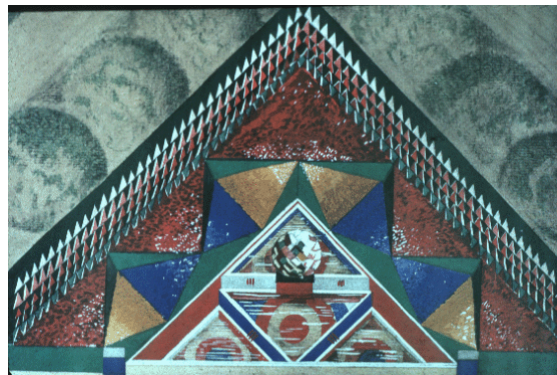
**Le Corbusier (1887-1965):
Villa Savoye, Poissy. 1928.**



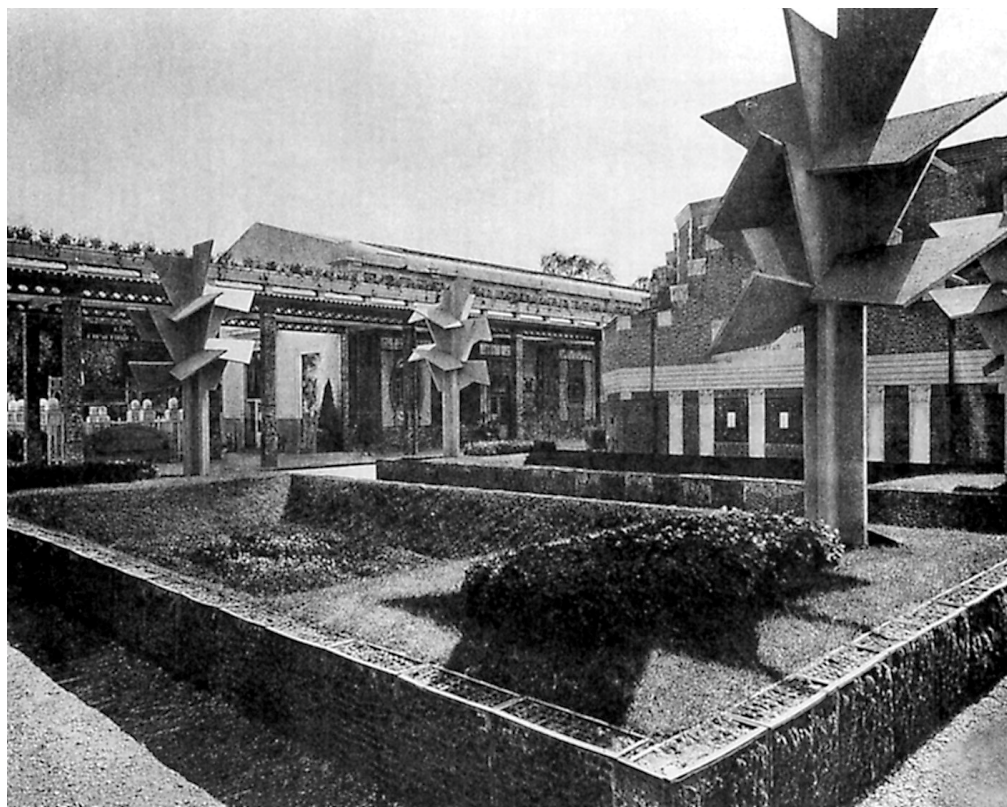
1920



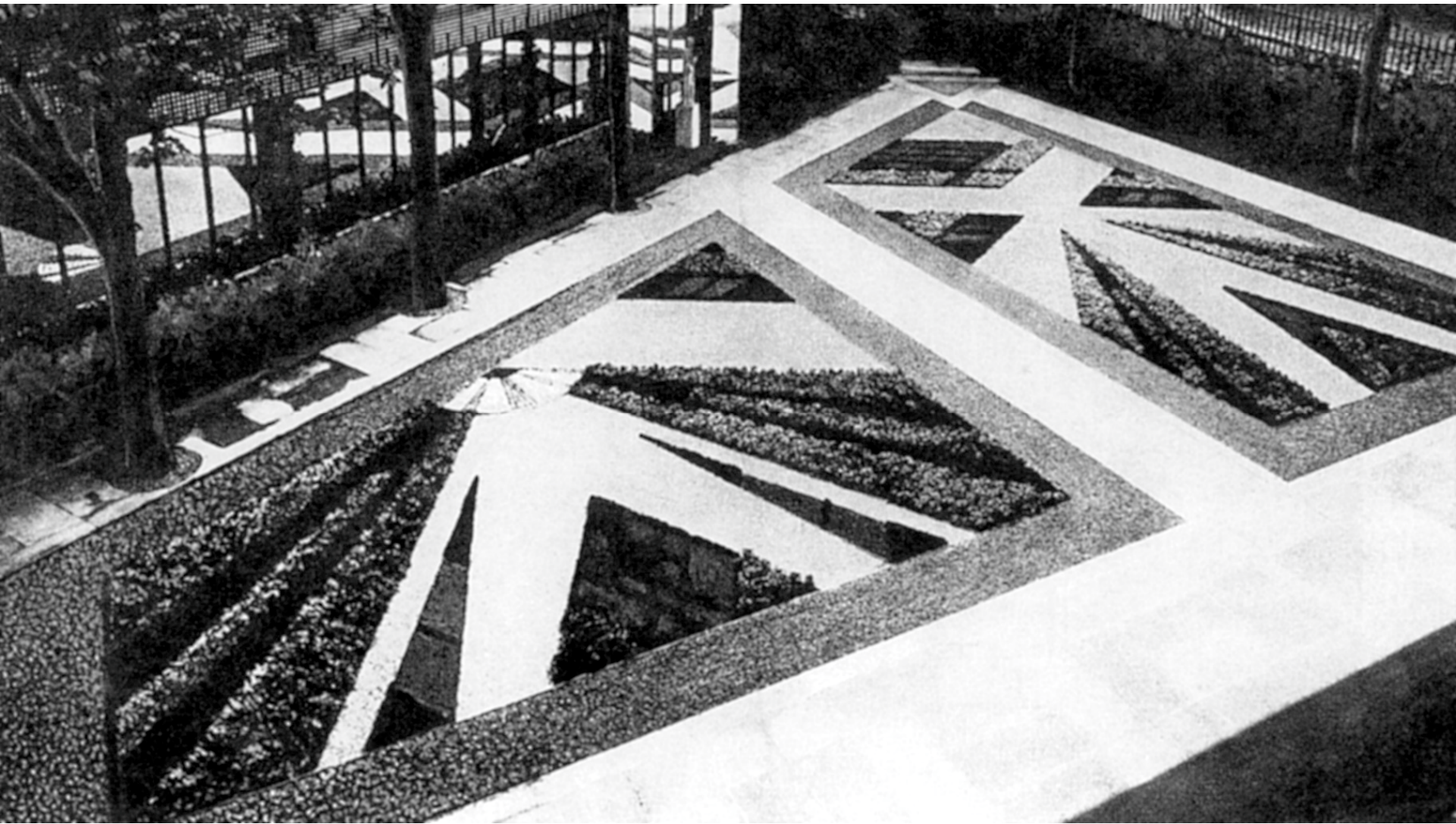
**Gabriel Guevrikian (1900-70):
Jardin d'eau et de lumière.
Paris Expo 1925.**



**Robert Mallet-Stevens (1886-1945)
Jardin de l'habitation moderne.
Paris Expo 1925.**



1920



**Paul Vera (? attr.):
Puutarha Nouilles, Place des États-Unis. 1924.**

1930

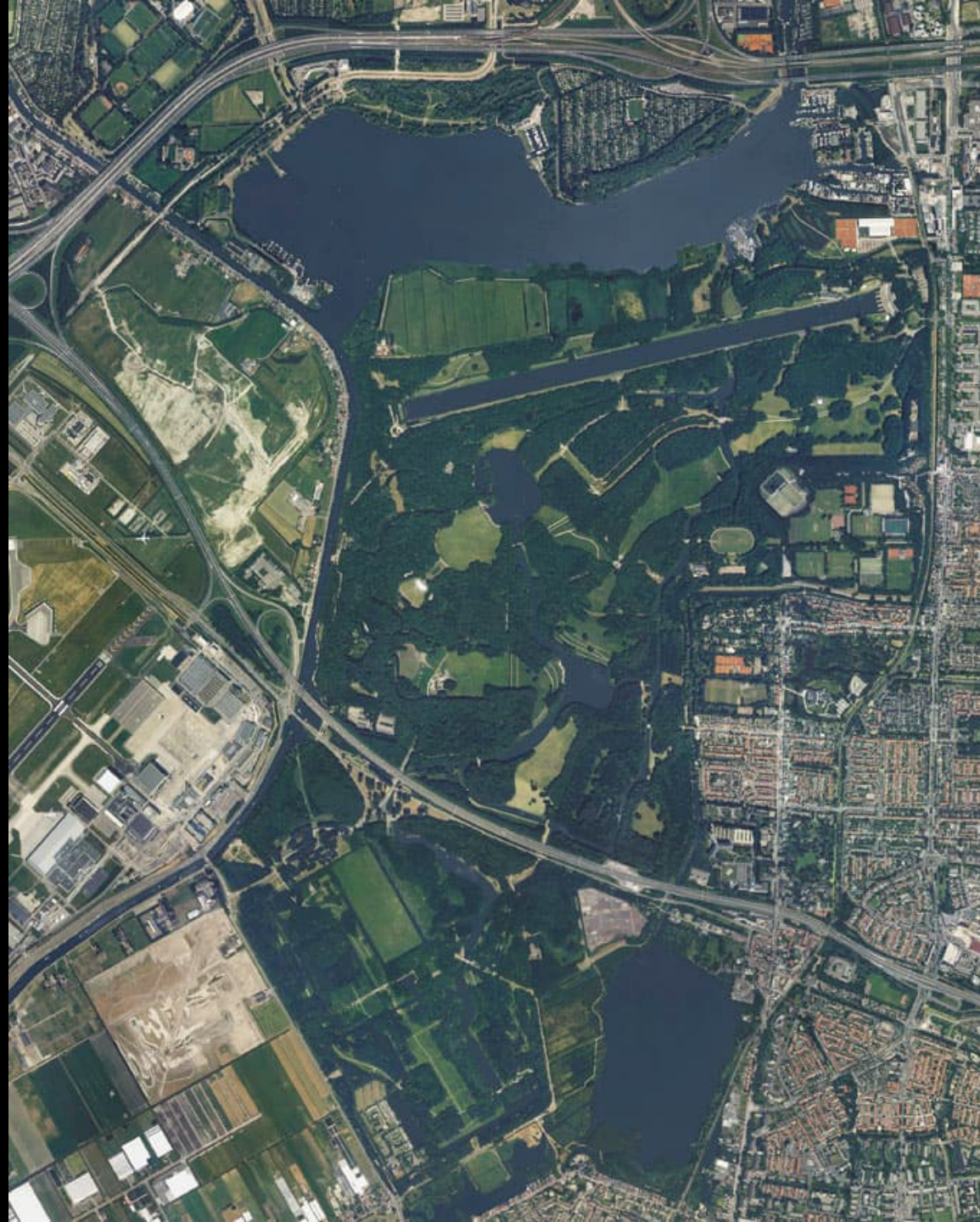


Jean Canneel-Claes (1909-89)



1932

1930



Het Amsterdams Bos

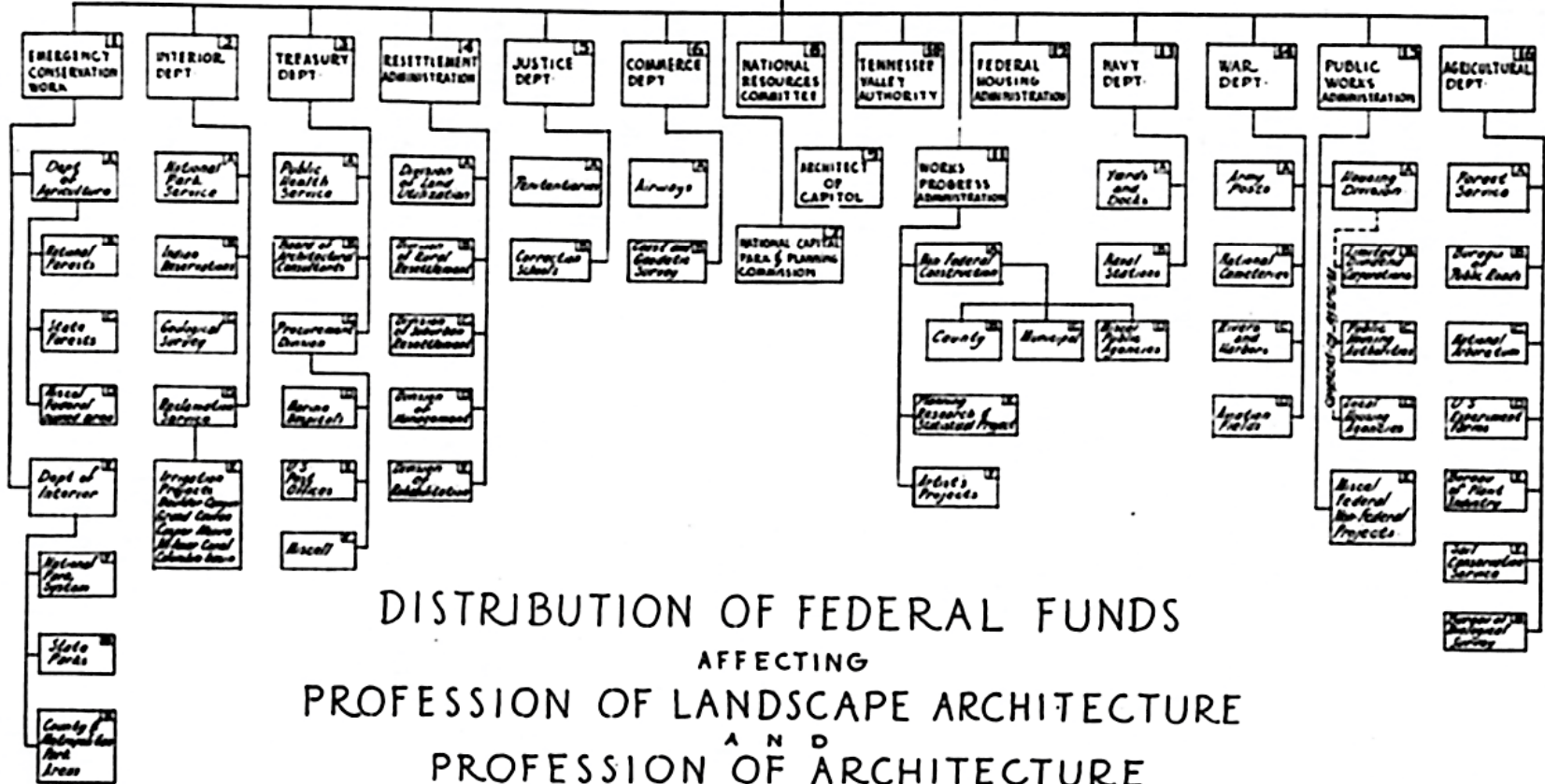
1930

Robert Moses (1888-1981):
Henry Hudson Parkway 1930-luku



NATIONAL WORKS PROGRAM

EMERGENCY WORK RELIEF FUNDS AND
REGULAR DEPARTMENTAL APPROPRIATIONS



DISTRIBUTION OF FEDERAL FUNDS

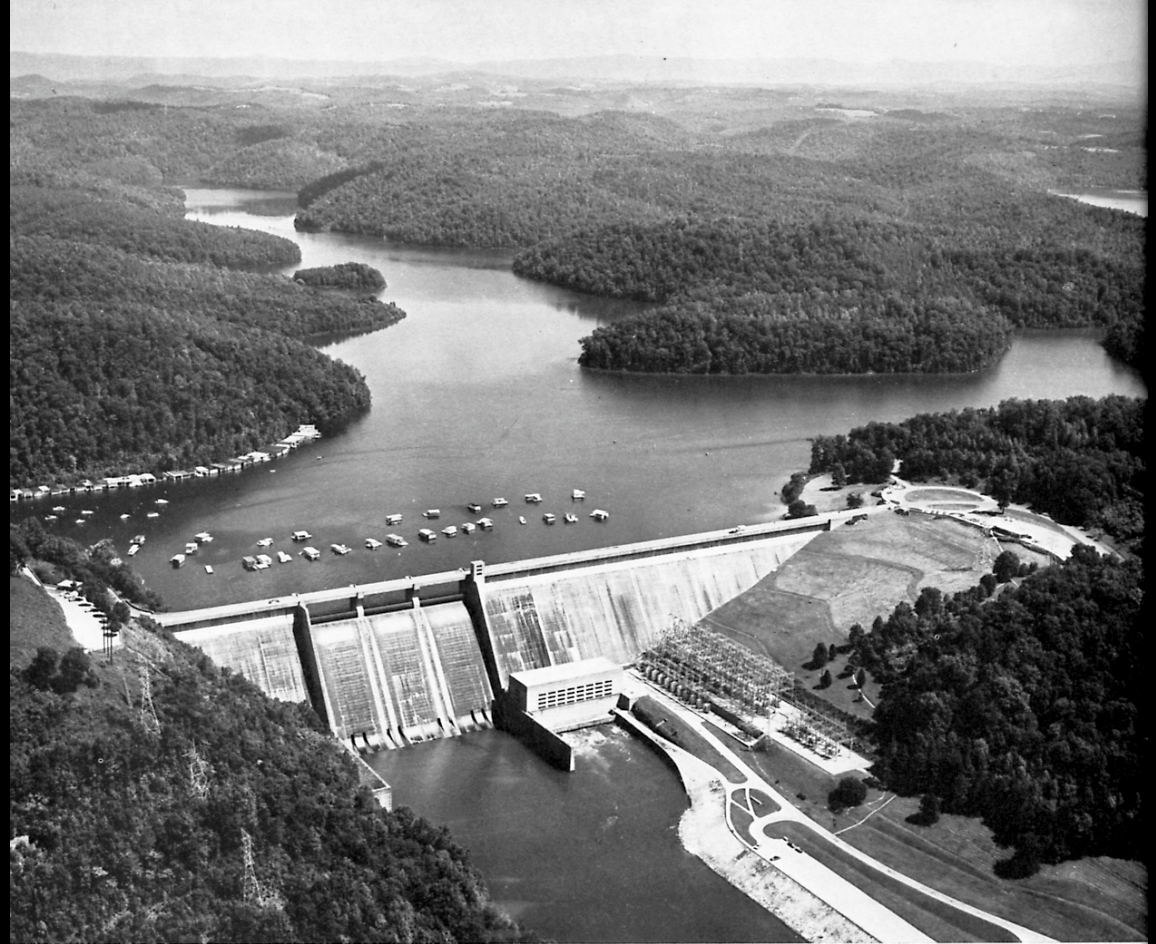
AFFECTING

PROFESSION OF LANDSCAPE ARCHITECTURE

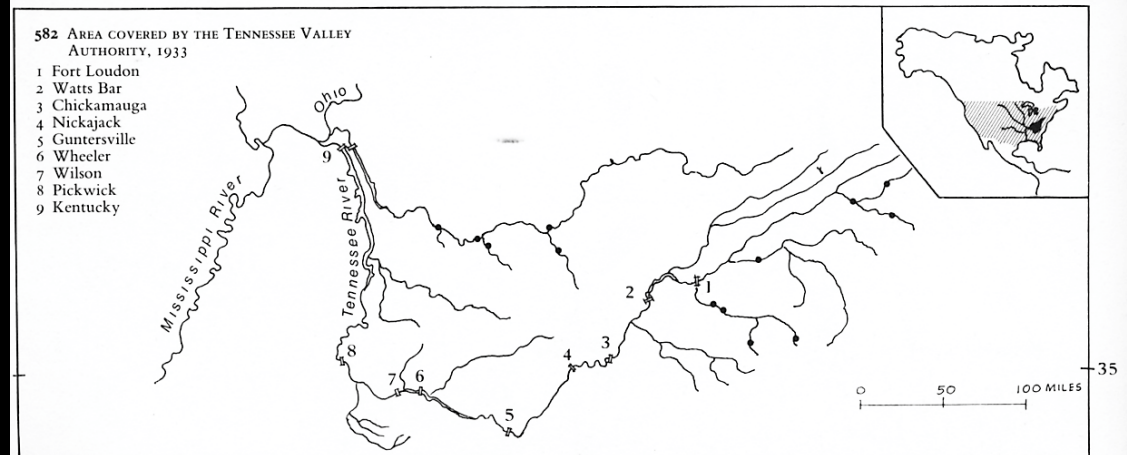
AND

PROFESSION OF ARCHITECTURE

1930



TVA Tennessee Valley Authority



1930



Fredhällsparken, Tukholma 1932-36
Osvald Almquist (1884-1950)

1930



Fredhällsparken, Tukholma 1932-36
Osvald Almquist (1884-1950)

1930



Fredhällsparken, Tukholma 1932-36
Osvald Almqvist (1884-1950)

1930



Fredhällsparken, Tukholma 1930
Osvald Almqvist (1884-1950)

1940



1940

Parken luckrar staden

släpper in luft och ljus
skyddsbälten för brand och bomber
ett nät genom staden

*Parken ger plats för
friluftskreation*

avgränsar skilda stadspartier
och ger dem individuell karaktär
miljö för enskilda byggnader
och viss belyggnad
trafikanordningar m.m.

Parken är samlingsplats

promenad och vila
tummelplats för alla åldrar
lekplatser
lägerplatser
idrottsområden

*Parken bevarar natur
och kultur*

gemenskap i
stadens allmänningar
gudstjänster
musik
demonstrationer
fester
dans

ursprunglig och nyskapad natur från
enskilda träd till hela landskap

gammal kultur och ny från sättnings-
sättningen till det moderna monumentet

1940



Patrick Abercrombie (1879-1957)

- County of London Plan 1943
- The Greater London Regional Plan 1944

Stevenage	begun in 1946 for	60,000 inhabitants
Hemel Hempstead	1947	65,000
Crawley	1947	62,000
Harlow	1947	60,000
Hatfield	1948	26,000
Welwyn (an expansion of the Garden City)	1948	42,000
Basildon	1949	86,000
Bracknell	1949	25,000

six elsewhere in Britain:

Newton Aycliffe	begun in 1947 for	15,000 inhabitants
East Kilbride	1947	50,000
Glenrothes	1948	32,000
Peterlee	1948	25,000
Cwmbran	1949	45,000
Corby	1950	55,000

1940

VÄESTÖLIITTO (1941), ASUNTOSÄÄTIÖ (1951)
Heikki von Hetrzen (1913-1985):
Koti vaiko kasarmi lapsillemme? (1948)



1940



Thomas Church (1902-78)

**The Donnell Garden
Sonoma, Kalifornia 1947**

1950

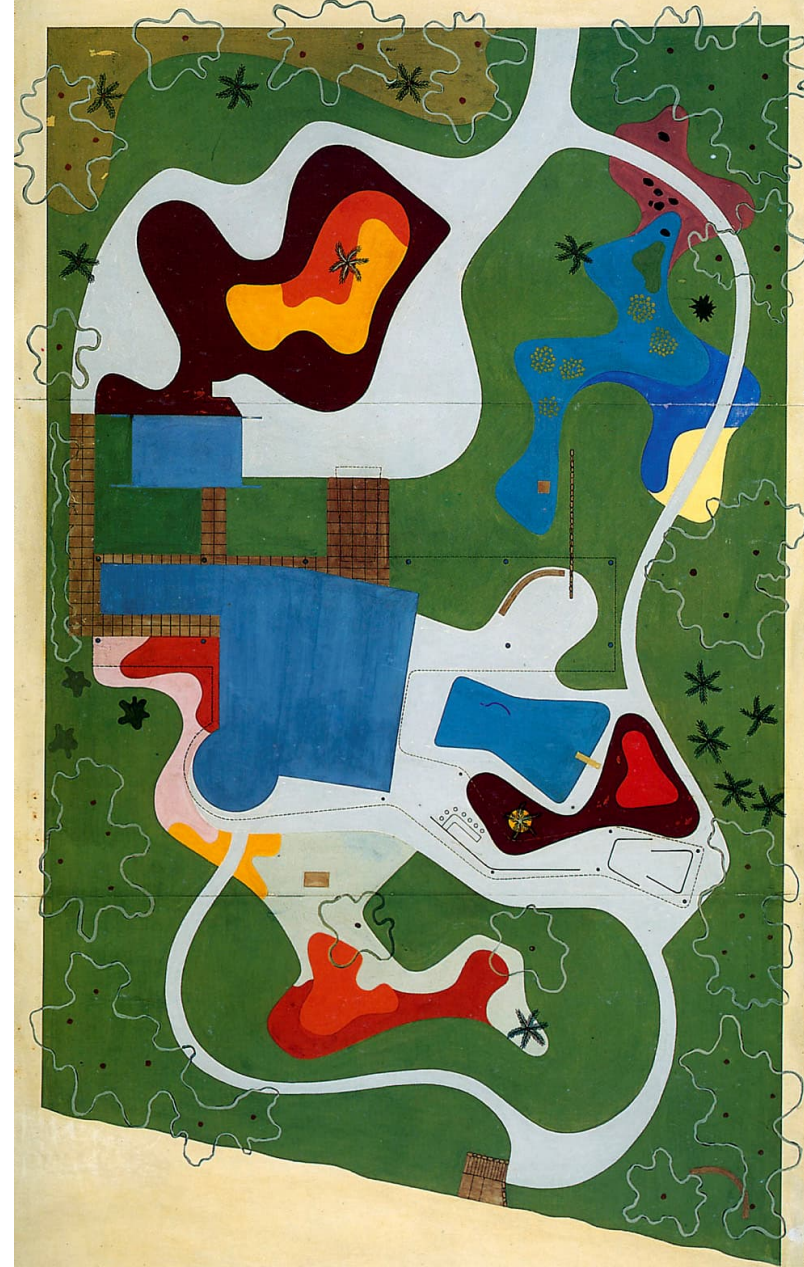
Roberto Burle Marx (1909-94)

Burton Tremaine Residence (toteutumaton)
Santa Barbara, Kalifornia 1948

Olivo Gomes puutarhat
São José dos Campos
São Paulo 1950, 1965.



GARDEN by, ROBERTO BURLE MARX



1960



Luis Barragan (1902-88)

Las Arboledas, Mexico City (1959-62)

1960



Ian McHarg: Design with Nature 1968

1960

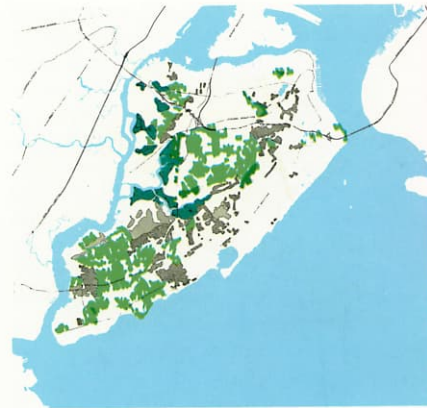
McGRAW-HILL BOOK COMPANY *New York, Toronto, London, Sydney*

The Landscape We See

GARRETT ECKBO



1960



EXISTING VEGETATION

FOREST:ECOLOGICAL ASSOCIATIONS



EXISTING WILDLIFE HABITATS

FOREST:EXISTING QUALITY



Ian McHarg: Design with Nature

SOIL LIMITATIONS:FOUNDATION

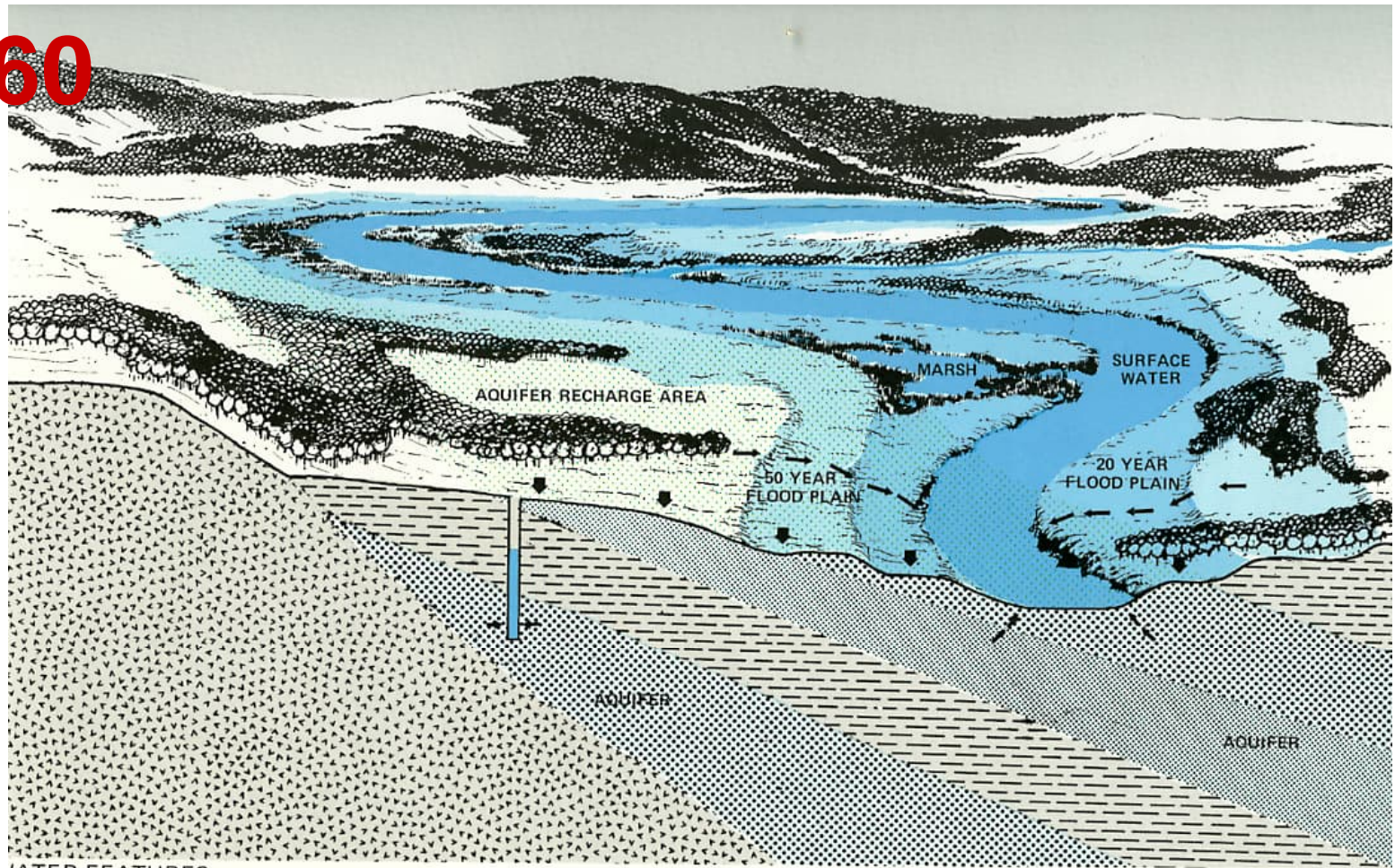
SOIL LIMITATIONS:WATER-TABLE

ECOLOGICAL FACTOR	RANKING CRITERIA	PHENOMENA RANK					VALUE FOR LAND USE												
		I	II	III	IV	V	C	P	A	R	I								
CLIMATE																			
AIR POLLUTION	INCIDENCE MAX ► MIN	High	Medium	Low		Lowest													
TIDAL INUNDATION	INCIDENCE MAX ► MIN	Highest Recorded	Highest Projected			Above Flood Line													
GEOLOGY																			
FEATURES OF UNIQUE, SCIENTIFIC AND EDUCATIONAL VALUE	SCARCITY MAX ► MIN	1 Ancient Lakebeds 2 Drainage Outlets	1 Terminal Moraine 2 Limit of Glaciation 3 Boulder Trail	Serpentine Hill	Palisades Outlier	1 Beach 2 Buried Valleys 3 Clay Pits 4 Gravel Pits													
FOUNDATION CONDITIONS	COMPRESSIVE STRENGTH MAX ► MIN	1 Serpentine 2 Diabase	Shale	Cretaceous Sediments	Filled Marsh	Marsh and Swamp													
PHYSIOGRAPHY																			
FEATURES OF UNIQUE, SCIENTIFIC AND EDUCATIONAL VALUE	SCARCITY MAX ► MIN	Hummocks and kettleholes within the Terminal Moraine	Palisades Outlier	Moraine Scarps and lakes along the Bay Shore	Breaks in Serpentine Ridge														
LAND FEATURES OF SCENIC VALUE	DISTINCTIVE MOST ► LEAST	Serpentine Ridge and Promontories	Beach	1 Encarpments 2 Enclosed Valleys	1 Berms 2 Promontories 3 Hummocks	Undifferentiated													
WATER FEATURES OF SCENIC VALUE	DISTINCTIVE MOST ► LEAST	Bay	Lake	1 Pond 2 Streams	Marsh	1 The Narrows 2 Kill Van Kull 3 Arthur Kill													
RIPARIAN LANDS OF WATER FEATURES	VULNERABILITY MOST ► LEAST	Marsh	1 Stream 2 Ponds	Lake	Bay	1 The Narrows 2 Kill Van Kull 3 Arthur Kill													
BEACHES ALONG THE BAY	VULNERABILITY MOST ► LEAST	Moraine Scarps	Coves	Sand Beach															
SURFACE DRAINAGE	PROPORTION OF SURFACE WATER TO LAND AREA MOST ► LEAST	Marsh and swamp	Areas of constricted drainage	Dense stream/swale network	Intermediate stream/swale network	Sparse stream/swale network													
SLOPE	GRADIENT HIGH ► LOW	Over 25%	25-10%	10-5%	5-2 1/2%	2 1/2-0%													
HYDROLOGY																			
MARINE																			
Commercial Craft	NAVIGABLE CHANNELS DEEPEST ► SHALLOWEST	The Narrows	Kill Van Kull	Arthur Kill	Fresh Kill	Raritan Bay													
Pleasure Craft	FREE EXPANSE OF WATER LARGEST ► SMALLEST	Raritan Bay	Fresh Kill	The Narrows	Arthur Kill	Kill Van Kull													
FRESH WATER																			
Active recreation (swimming, paddling, model-boat sailing, etc.)	EXPANSE OF WATER LARGEST ► SMALLEST	Silver Lake	1 Clove Lake 2 Grassmere Lake 3 Ohrbach Lake 4 Arbutus Lake 5 Wolfes Pond	Other ponds	Streams														
Stream-side recreation (fishing, trails, etc.)	SCENIC MOST ► LEAST	Nonurbanized perennial streams	Nonurbanized intermittent streams	Semiurbanized streams	Urbanized streams														
WATERSHEDS FOR STREAM QUALITY PROTECTION	SCENIC STREAMS MOST ► LEAST	Nonurbanized perennial streams	Nonurbanized intermittent streams	Semiurbanized streams	Urbanized streams														
AQUIFERS																			
	YIELD HIGHEST ► LOWEST	Buried valleys		Cretaceous Sediments		Crystalline rocks													
AQUIFER RECHARGE ZONES	IMPORTANT AQUIFERS MOST ► LEAST	Buried valleys		Cretaceous Sediments		Crystalline rocks													

1968

C CONSERVATION, P PASSIVE RECREATION, A ACTIVE RECREATION, R RESIDENTIAL DEVELOPMENT, I COMMERCIAL & INDUSTRIAL DEVELOPMENT

1960

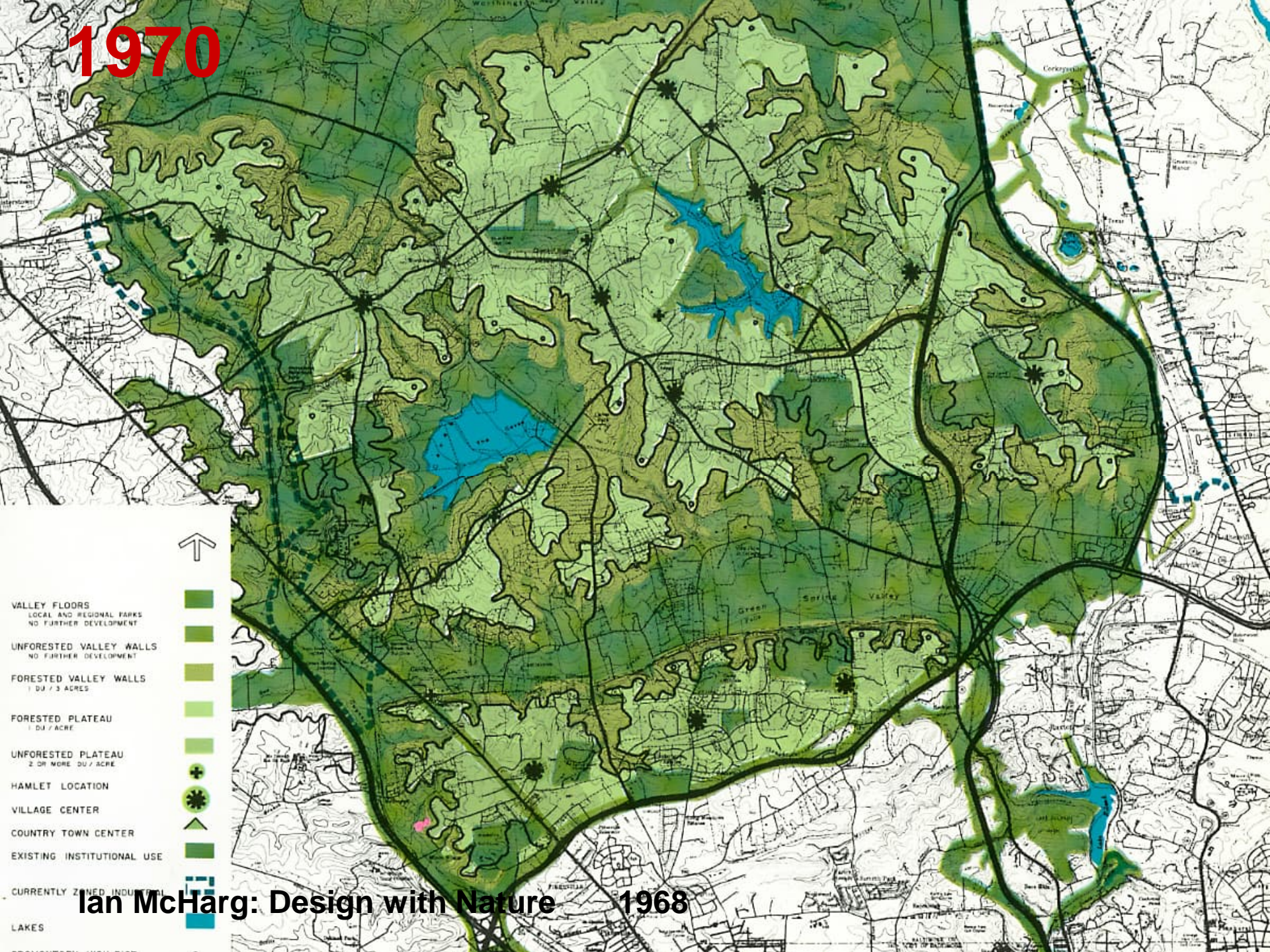


WATER FEATURES



Ian McHarg: Design with Nature 1968

1970



VALLEY FLOORS
LOCAL AND REGIONAL FARMS
NO FURTHER DEVELOPMENT



UNFORESTED VALLEY WALLS
NO FURTHER DEVELOPMENT



FORESTED VALLEY WALLS
1 DU / 3 ACRES



FORESTED PLATEAU
DU / ACRE



UNFORESTED PLATEAU
2 OR MORE DU / ACRE



HAMLET LOCATION



VILLAGE CENTER



COUNTRY TOWN CENTER



EXISTING INSTITUTIONAL USE



CURRENTLY ZONED INDUSTRIAL

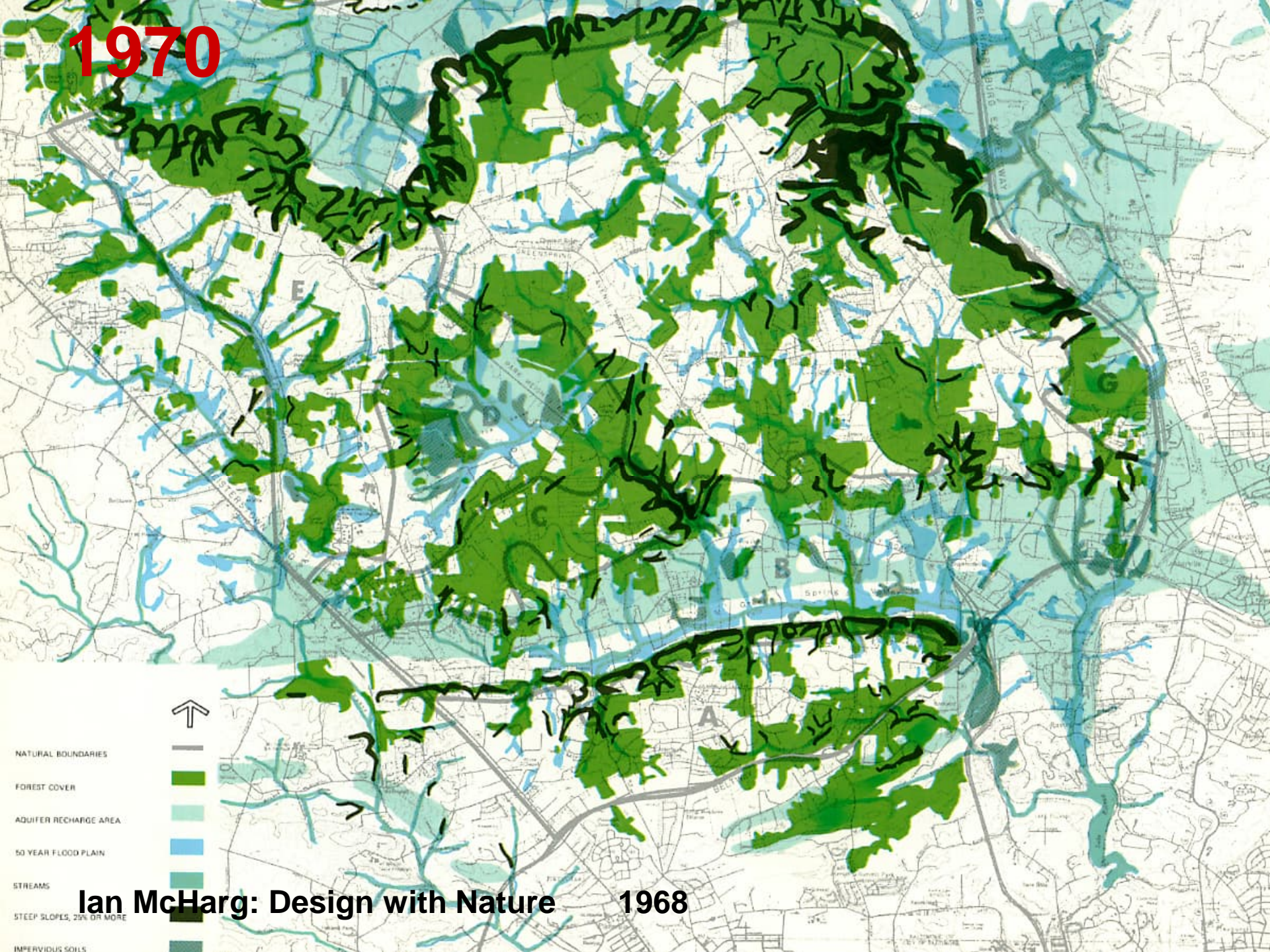


LAKES



Ian McHarg: Design with Nature 1968

1970



- NATURAL BOUNDARIES
- FOREST COVER
- AQUIFER RECHARGE AREA
- 50 YEAR FLOOD PLAIN
- STREAMS
- STEEP SLOPES, 20% OR MORE
- IMPERVIOUS SOILS

Ian McHarg: Design with Nature 1968

1970

design vs. planning



- NATURAL BOUNDARIES
- FOREST COVER
- AQUIFER RECHARGE AREA
- 50 YEAR FLOOD PLAIN
- STREAMS
- STEEP SLOPES, 25% OR MORE
- IMPERVIOUS SOILS



1960



1960

Robert Smithson (1938-1973)

Asphalt Rundown 1969

Spiral Jetty 1970



1970

Natur

ausschalten -

Natur

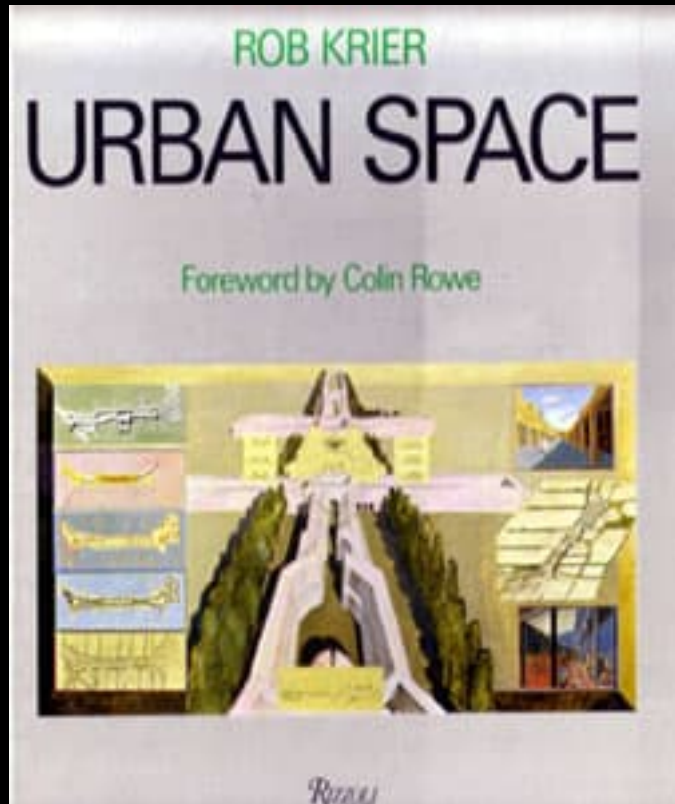
einschalten

„Man soll wachsen lassen,
was wächst, und mensch-
liche Eingriffe auf das Aller-
notwendigste beschränken
– die Natur ordnet sich
schon selbst.“

Louis G. Le Roy



1980



ROB KRIER

ON ARCHITECTURE



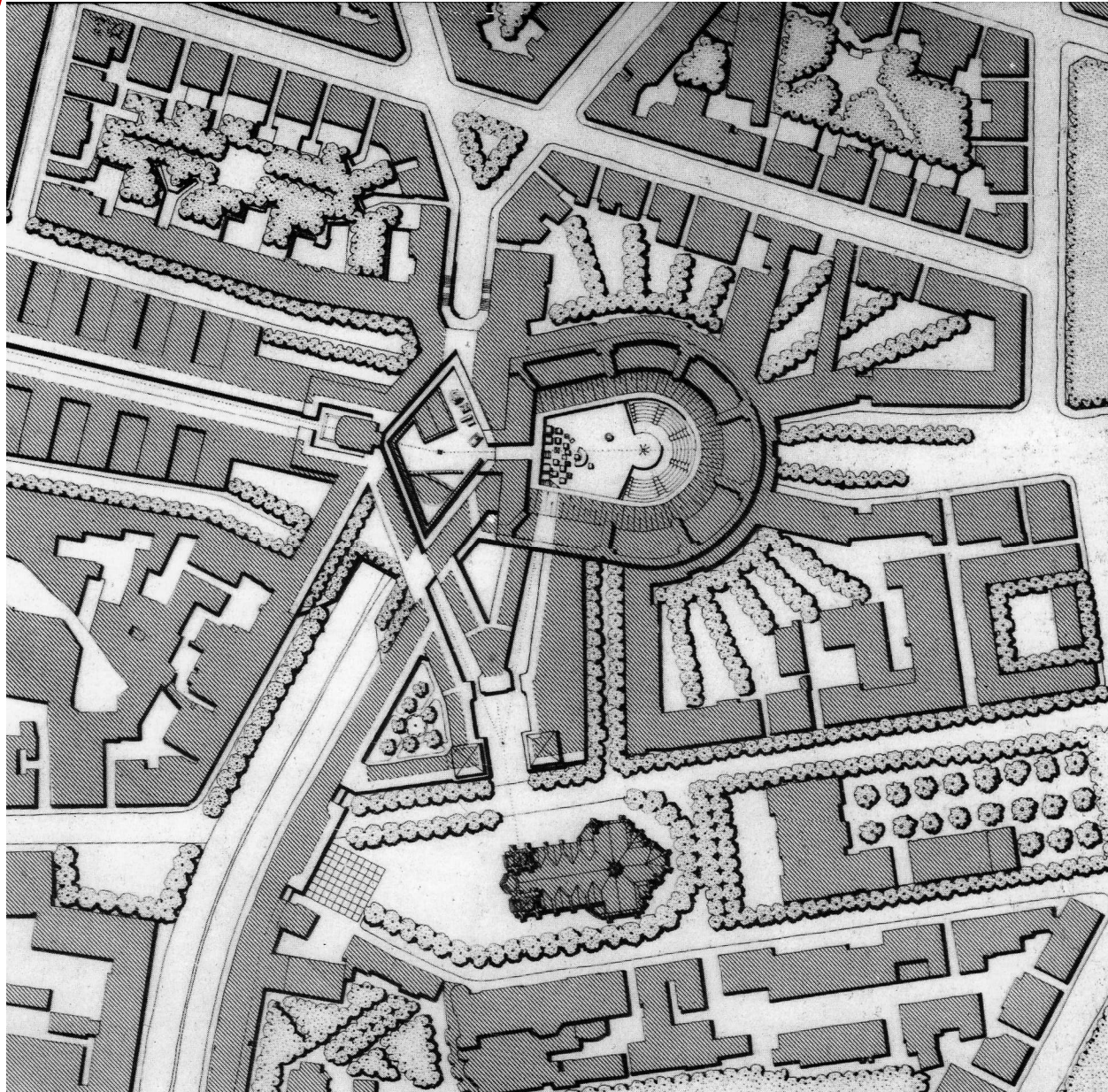
ACADEMY EDITIONS/ST. MARTIN'S PRESS

ROB KRIER
**ARCHITECTURAL
COMPOSITION**

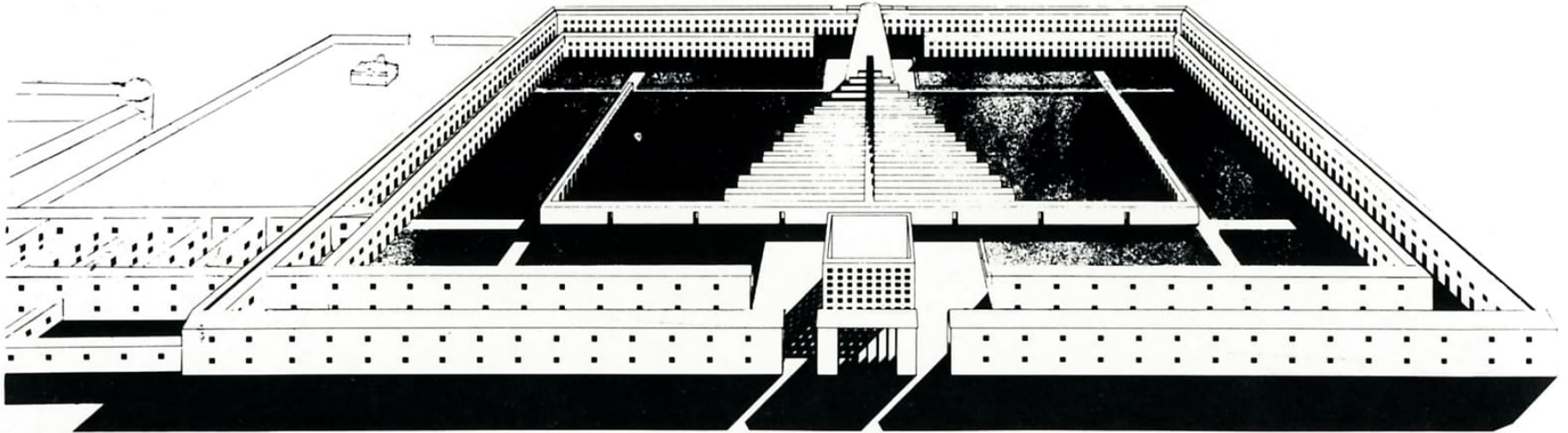


RIZZOLI
NEW YORK

1980

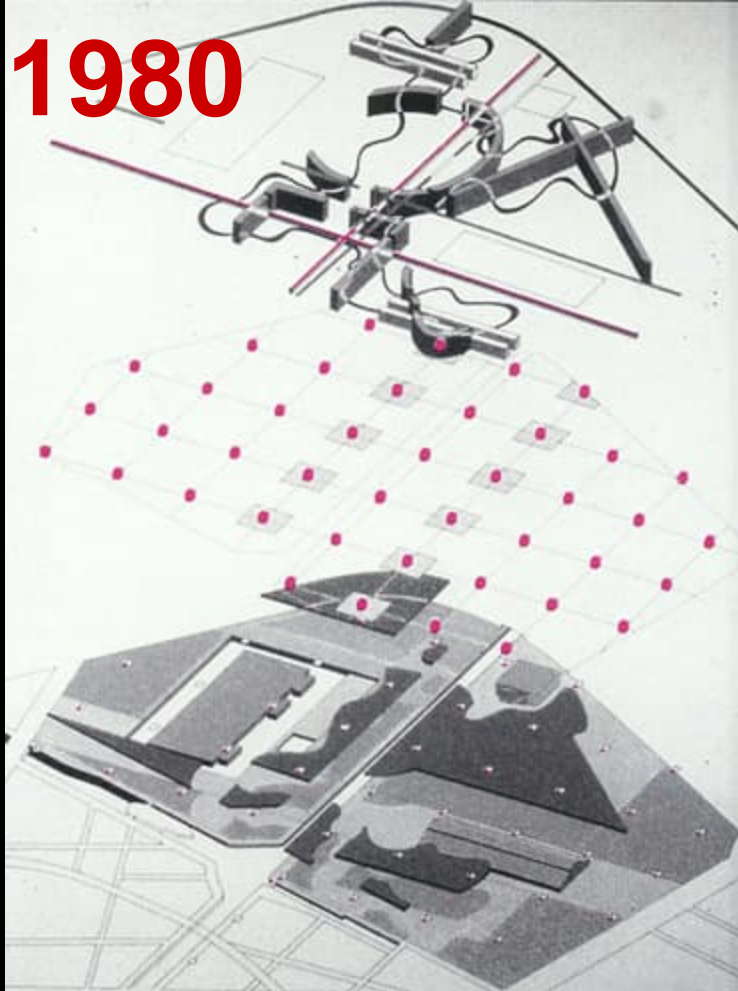


1980

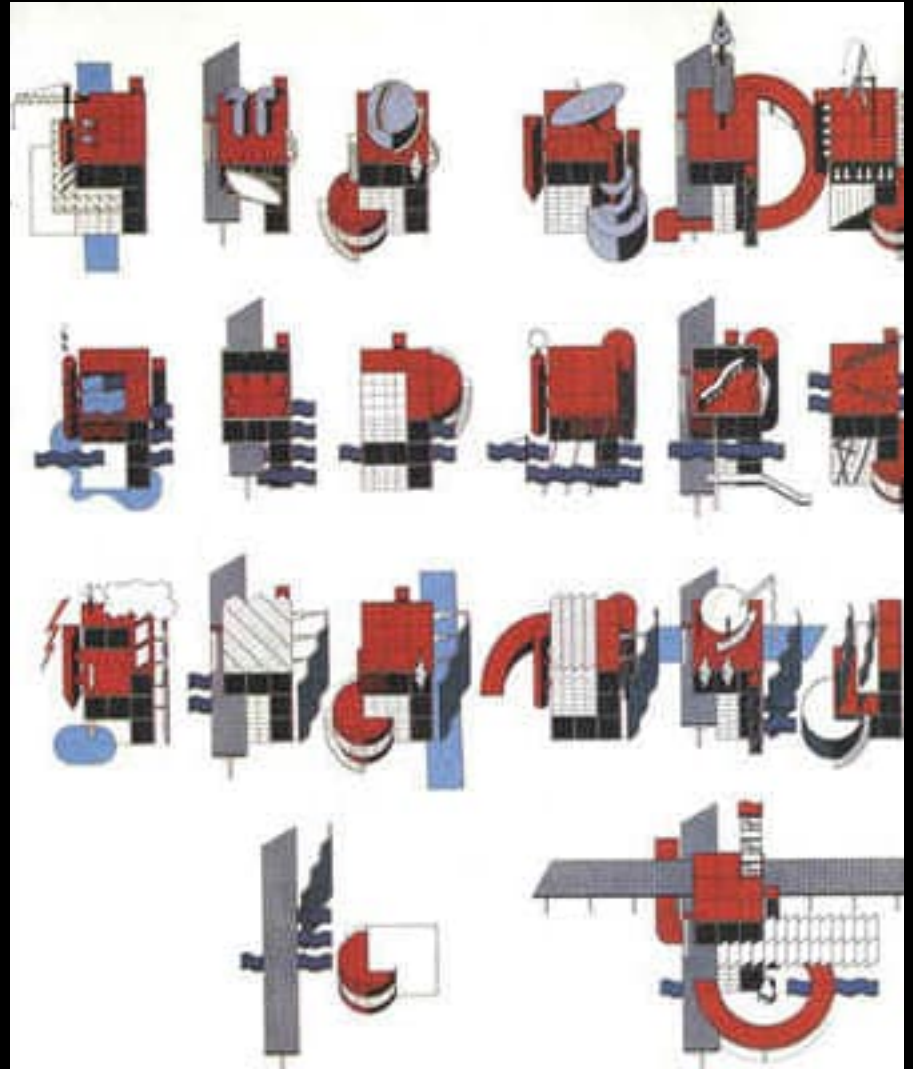


Aldo Rossi: Modenan hautausmaa 1980-luku

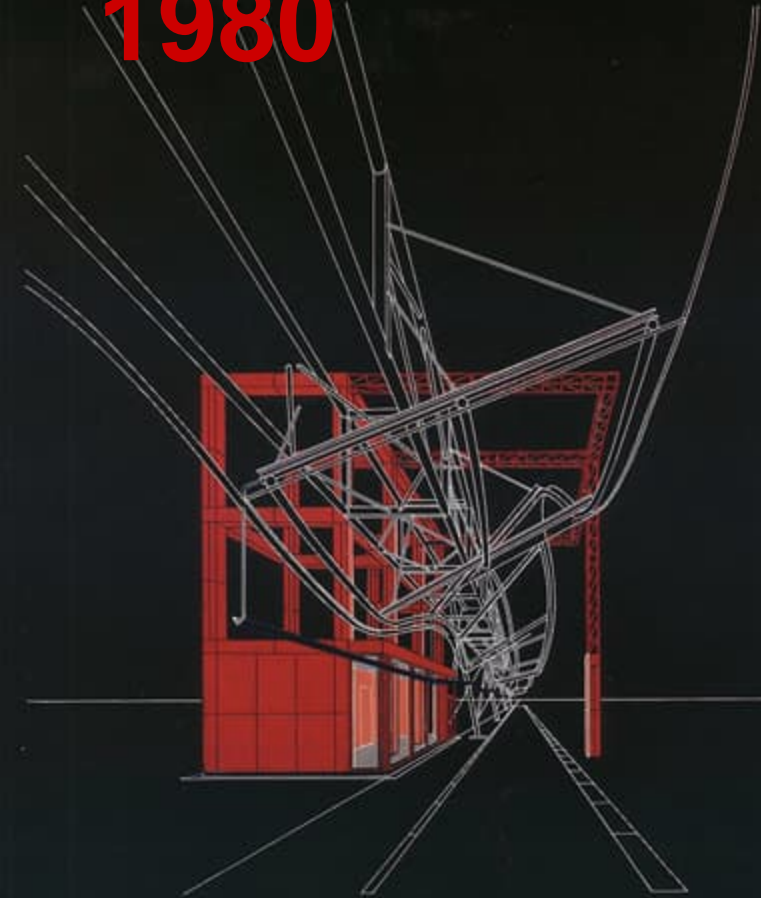
1980



Bernard Tschumi:
Parc de la Villette, Paris
1982-1991



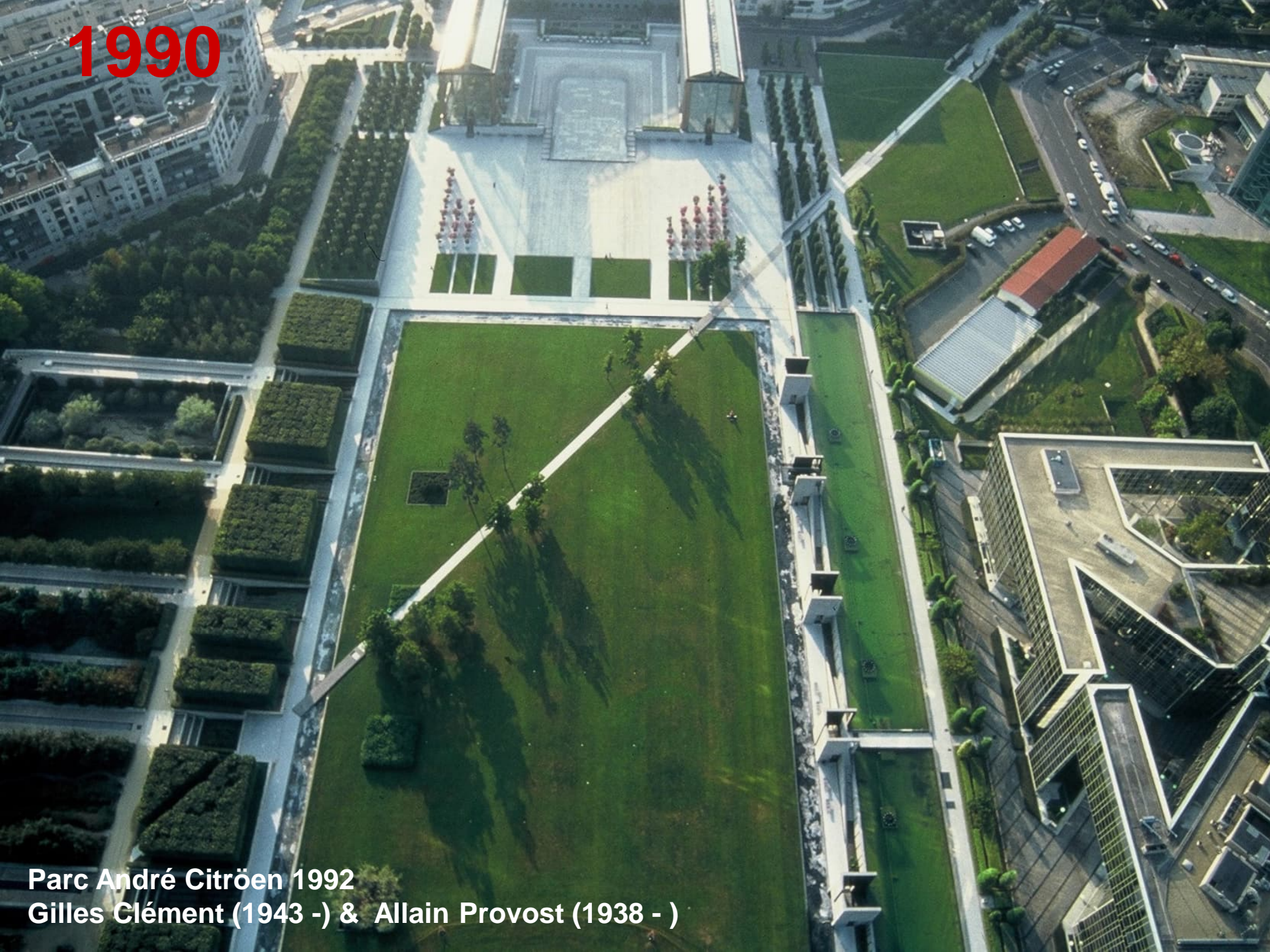
1980



Bernard Tschumi:
Parc de la Villette, Parisi
1982-1991

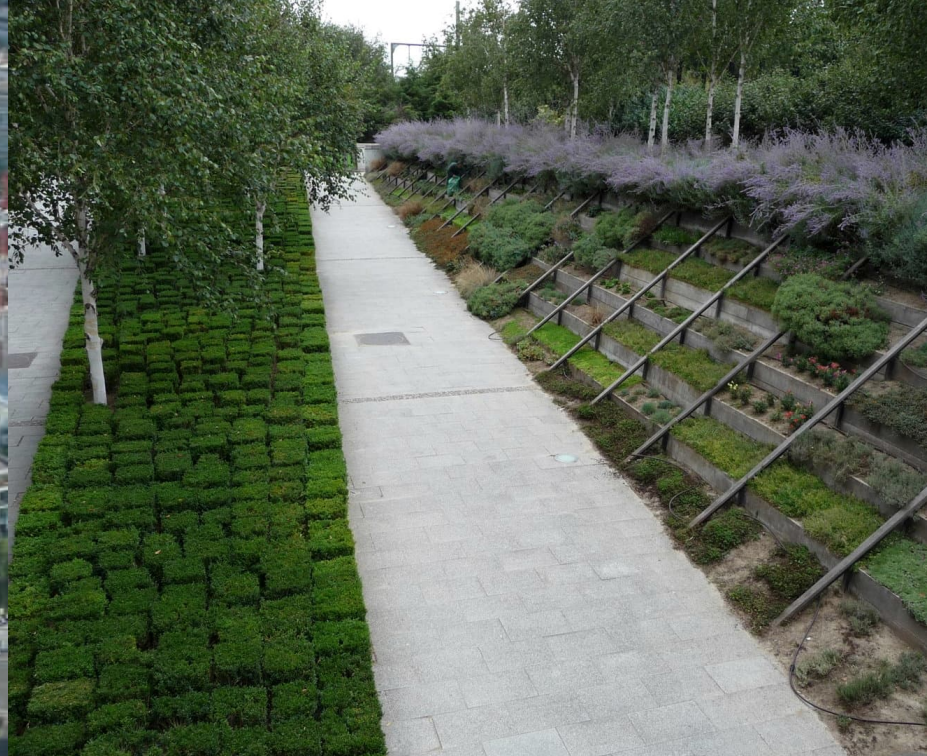


1990



Parc André Citroën 1992
Gilles Clément (1943 -) & Allain Provost (1938 -)

1990



Parc André Citroën 1992
Gilles Clément (1943 -) & Allain Provost (1938 -)

1990

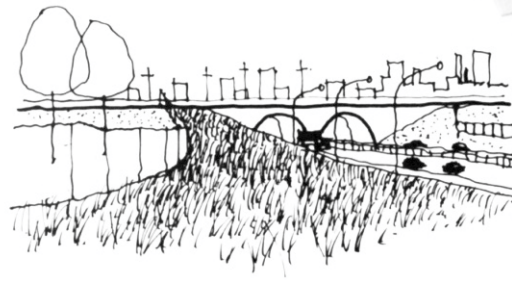
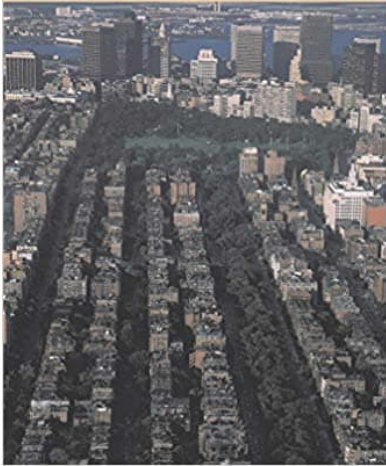


Parc André Citroën 1992
Gilles Clément (1943 -) & Allain Provost (1938 -)

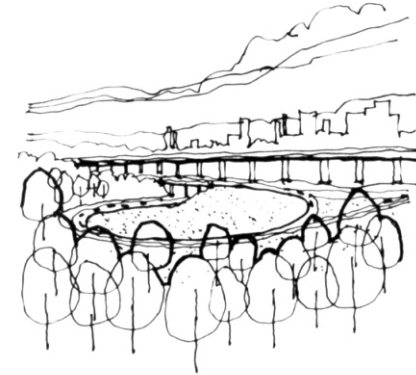
1980

THE GRANITE GARDEN

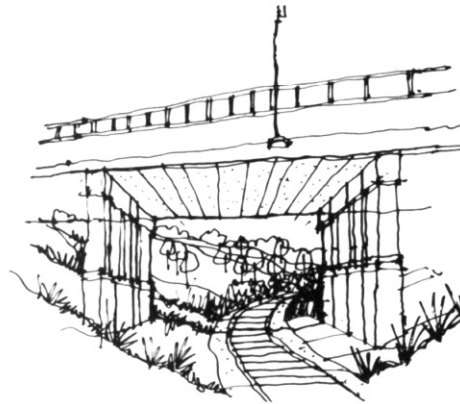
Urban Nature and Human Design
ANNE WHISTON SPIRN



Road edges

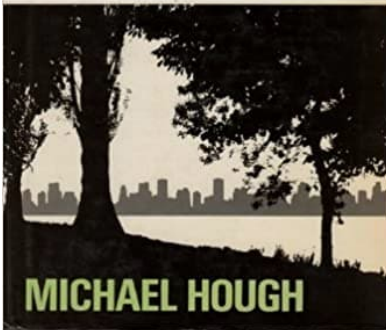


Expressway interchanges



Abandoned railway lines

CITY FORM AND NATURAL PROCESS



MICHAEL HOUGH



Disused canals

1980

WILDLIFE HABITAT TYPES Remnant rural landscapes



Remnant woodlands and corridors within the city's boundaries



Abandoned industrial sites



Remnant marshes



Aquatic wintering grounds

1990



Naturpark Südgelände, Berlin

Ingo Kowarik, Andreas Langer,
Odious Artist Group



1990

Naturpark Südgelände, Berlin

Ingo Kowarik, Andreas Langer,

Odious Artist Group



1990



Landschaftspark Duisburg-Nord
Anneliese & Peter Latz 1990-95

1990



Landschaftspark Duisburg-Nord
Anneliese & Peter Latz 1990-95

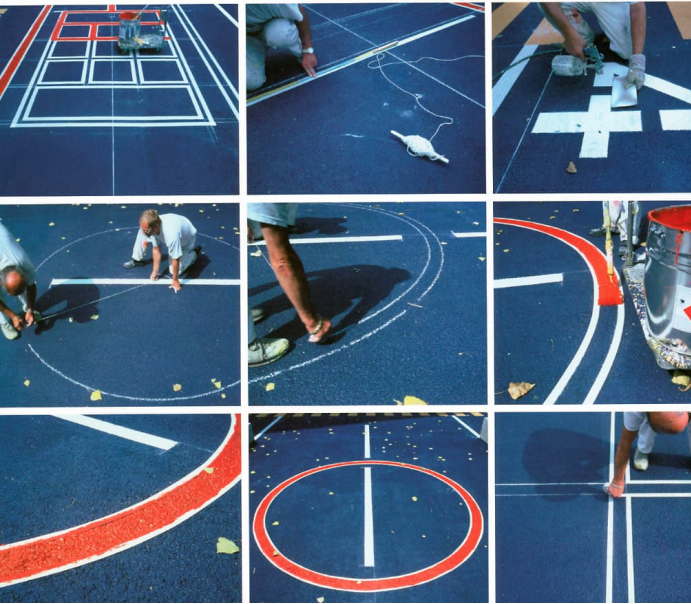
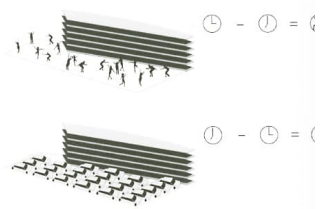
1990



Landschaftspark Duisburg-Nord
Anneliese & Peter Latz 1990-95

1990

Überlagerung der Plakate durch die wesentliche
Zeitbesetzung des Plakats = an anderer Zeitmanagement
Zeitmanagement durch die wesentliche Zeitmanagement



**Gabriele Kiefer (1960-):
Wohnhof Flämingsstrasse 1994**



1990



**Gabriele Kiefer (1960-):
Allerpark, Wolfsburg 2004**

1990

**Between Landscape Architecture
and Land Art**



Udo Weilacher

Dani Karavan: Passages 1994

Birkhäuser

Ian Hamilton Finlay: Little Sparta 1978

1990

meaning?

= merkitys, tarkoitus, sanoma, syy

...

Form, Meaning, and Expression in Landscape Architecture.

Laurie Olin 1988 / LJ 7:2

Must Landscape Mean?

Marc Treib 1995 / LJ 14:1

The Content of Landscape Form / The Limits of Formalism

Marc Treib 2001 / LJ 20:2

Can Gardens Mean?

Jane Gillette 2005 / LJ 24:1

...



1990

landscape urbanism

”... a move from both Modernist and New Urbanist models of ordering the city (both of which believe that formal models alone will remedy the problems of city) to more open-ended strategic models.”

- James Corner

suburbanism

”from *suburbia* and *urbanism* ... (2) the discipline of design practice, first inspired by suburban situations (as contexts), where the hierarchy traditionally promoted in urbanism between program and site is reversed. Instead, the site itself becomes the matter and horizon of design.

- Sébastien Marot

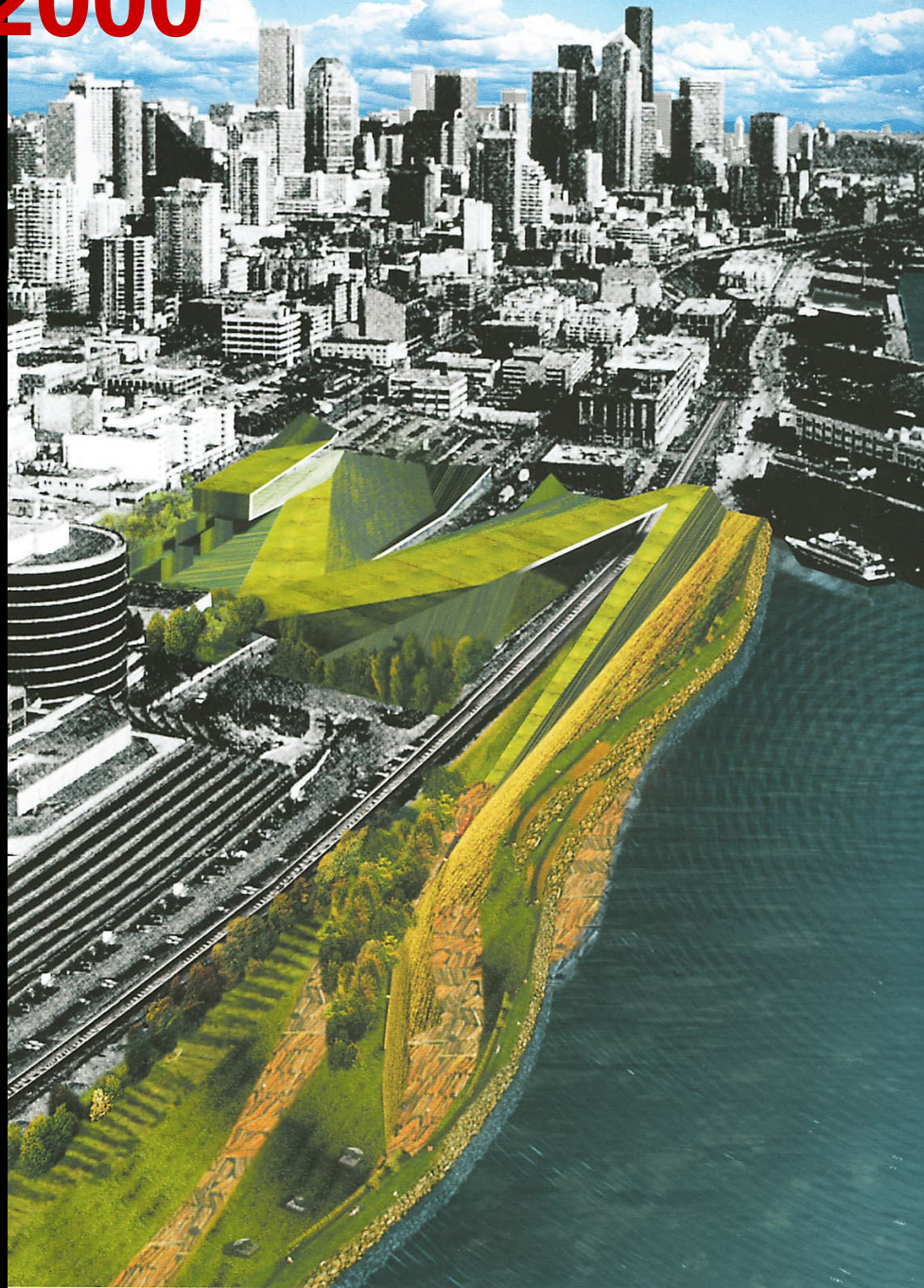
1990

Adriaan Geuze (1960-)
West 8

Schouwburgplein, Rotterdam



2000



GROUNDWELL –

Constructing the contemporary landscape

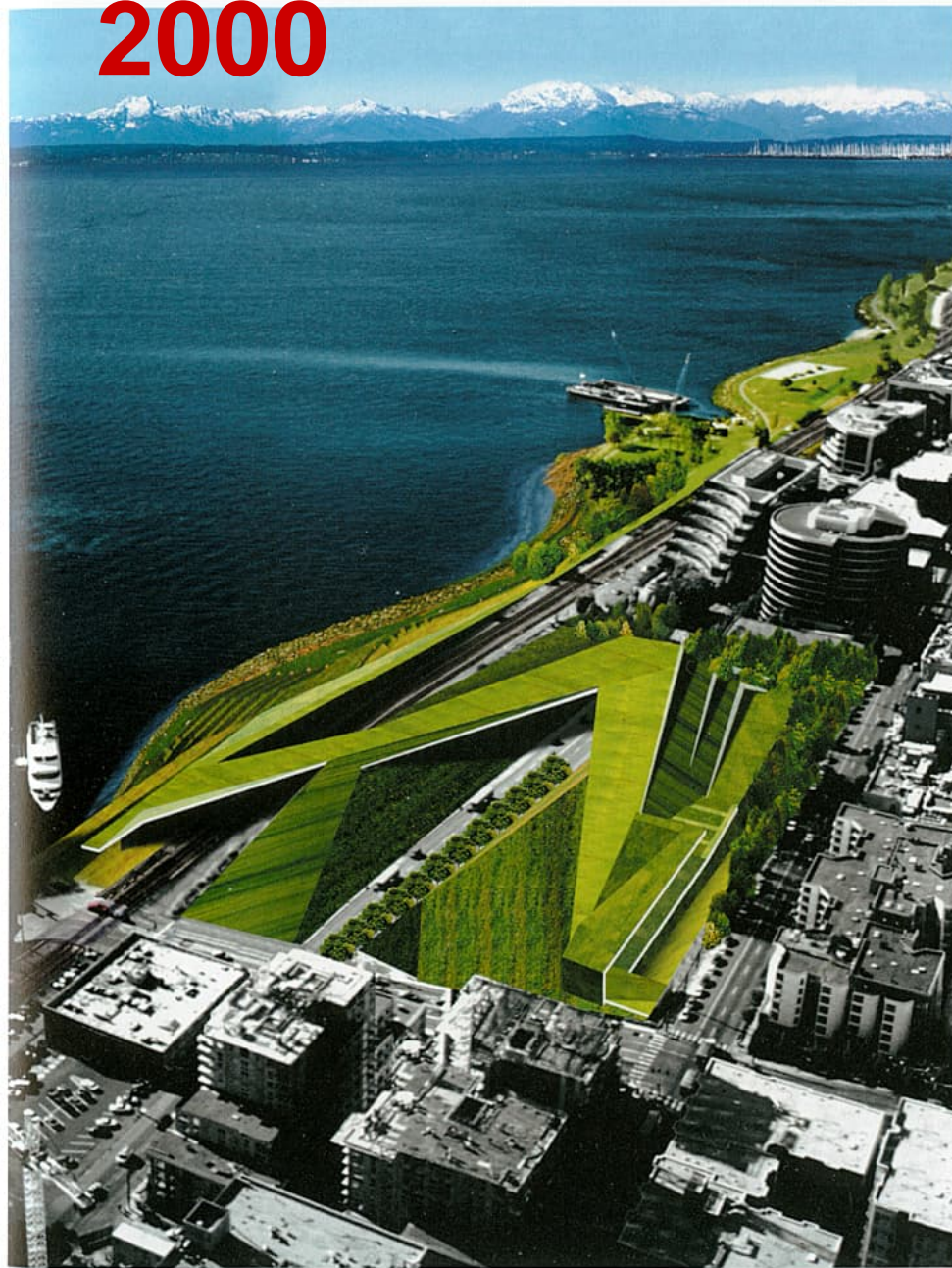
Modernin taiteen museo, New York

2005

Olympic Sculpture Park. Seattle, USA

2001-06. Weiss / Manfredi Architects

2000



RENDERING OF AERIAL VIEW TOWARD ELLIOTT BAY
AND OLYMPIC MOUNTAINS



TOP: RENDERING OF PLATFORM OVER RAILROAD



ABOVE: RENDERING OF VIEW FROM AUTOMOBILE OF
ELLIOTT AVENUE OVERPASS AND VIDEO PROJECTIONS

2000



Parc Diagonal del Mar
EMBT Arquitectes Associats
2002

2000



**Parc Diagonal del Mar
EMBT Arquitectes Associats
2002**

2000



Musée Quai Branly 2006

Jean Nouvel (1945 -)
Gilles Clément (1943 -)
Patrick Blanc (1953 -)
Yann Kersalé (1955 -)



2000



2000



Musée Quai Branly 2006

2000



Musée du quai Branly
Musée de l'Homme et des Amériques

Musée Quai Branly 2006

2000



Musée Quai Branly 2006

2000



Musée Quai Branly 2006

2000



Musée Quai Branly 2006

2000



Musée Quai Branly 2006

2000

Denkmal für die ermordeten Juden Europas 2005
Peter Eisenman (1932-)



2000



Denkmal für die ermordeten Juden Europas
Berlin 2005
Peter Eisenman (1932-)

2000



Denkmal für die ermordeten Juden Europas
Berlin 2005
Peter Eisenman (1932-)

2000



Denkmal für die ermordeten Juden Europas
Berlin 2005
Peter Eisenman (1932-)

2000



Denkmal für die ermordeten Juden Europas
Berlin 2005
Peter Eisenman (1932-)

2000



Operahuset i Oslo
Snøhetta 2000-2008

2000



Operahuset i Oslo
Snøhetta 2000-2008

2000



Operahuset i Oslo
Snøhetta 2000-2008

2000



Operahuset i Oslo
Snøhetta 2000-2008

2000



MFO Park
Oerlikon Zürich 2002
Burckhardt + Partner
Raderschallpartner

2000



**MFO Park
Oerlikon Zürich 2002
Burckhardt + Partner
Raderschallpartner**

2000



MFO Park
Oerlikon Zürich 2002
Burckhardt + Partner
Raderschallpartner

2000

MFO Park
Oerlikon Zürich 2002
Burckhardt + Partner
Raderschallpartner

2000

MFO Park
Oerlikon Zürich 2002
Burckhardt + Partner
Raderschallpartner

2000



MFO Park
Oerlikon Zürich 2002
Burckhardt + Partner
Raderschallpartner

2000



MFO Park
Oerlikon Zürich 2002
Burckhardt + Partner
Raderschallpartner

2000

MFO Park
Oerlikon Zürich 2002
Burckhardt + Partner
Raderschallpartner

2000



MFO Park
Oerlikon Zürich 2002
Burckhardt + Partner
Raderschallpartner

2010 ?