

**Kaupungit,
kaupunkisuunnittelu
ja maisema-arkkitehtuuri
Osa 2**

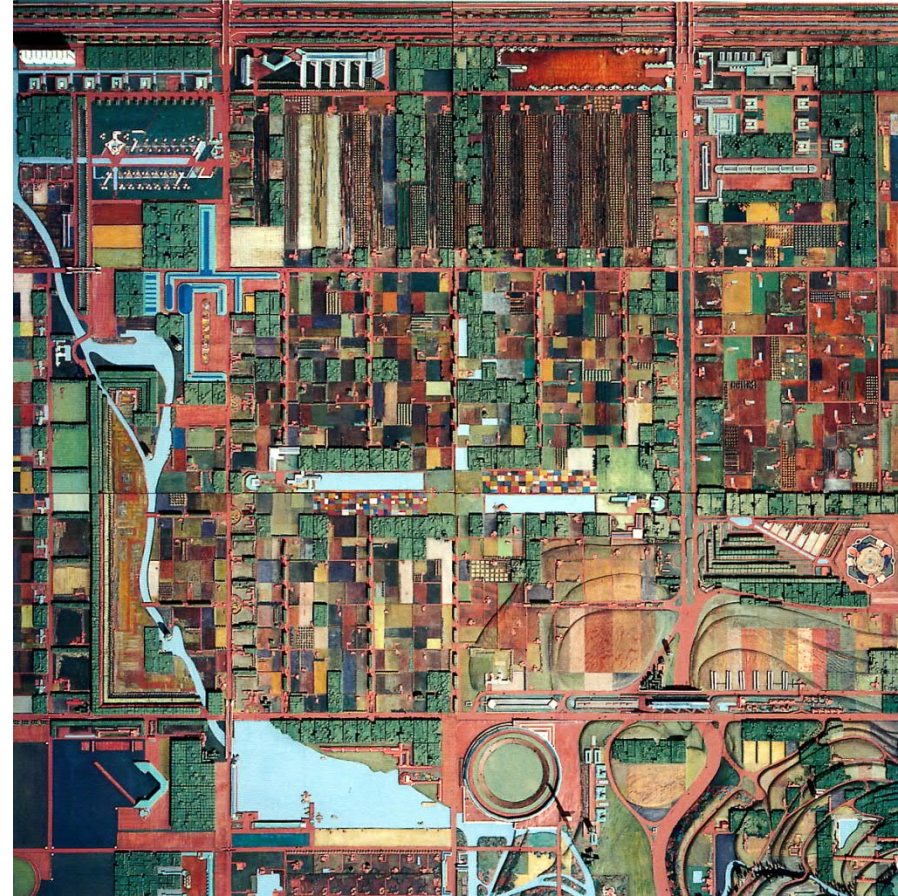
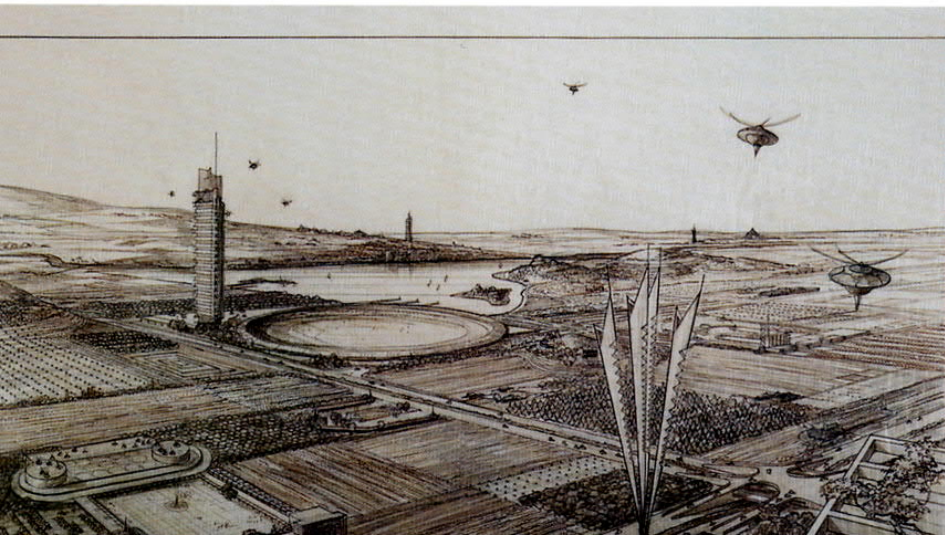
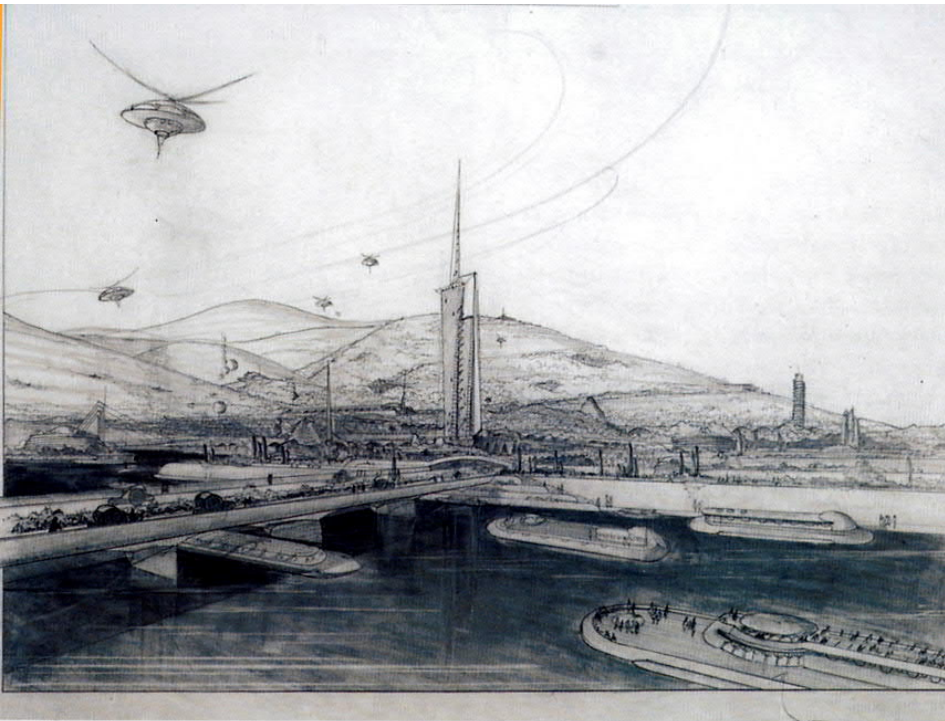
ШЕСТВАЯ ФОРМУ ПО
ПОБЕЖДАЕМ ФОРМУ

ИНЖЕНЕРЫ-
ДЕЛАЮТ РЕ-
ИЗОБРЕТЕНИЯМИ

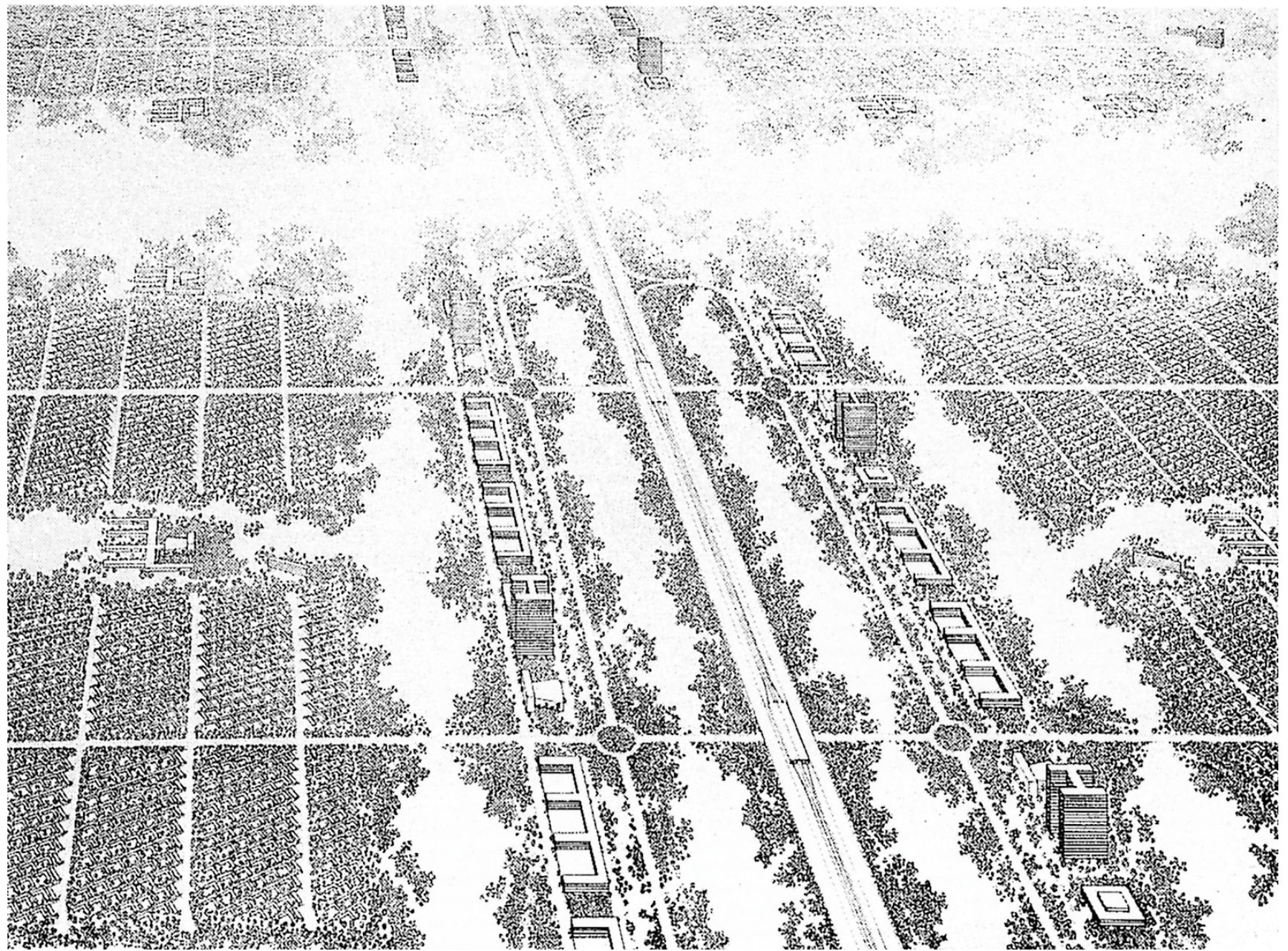
16.3.1972



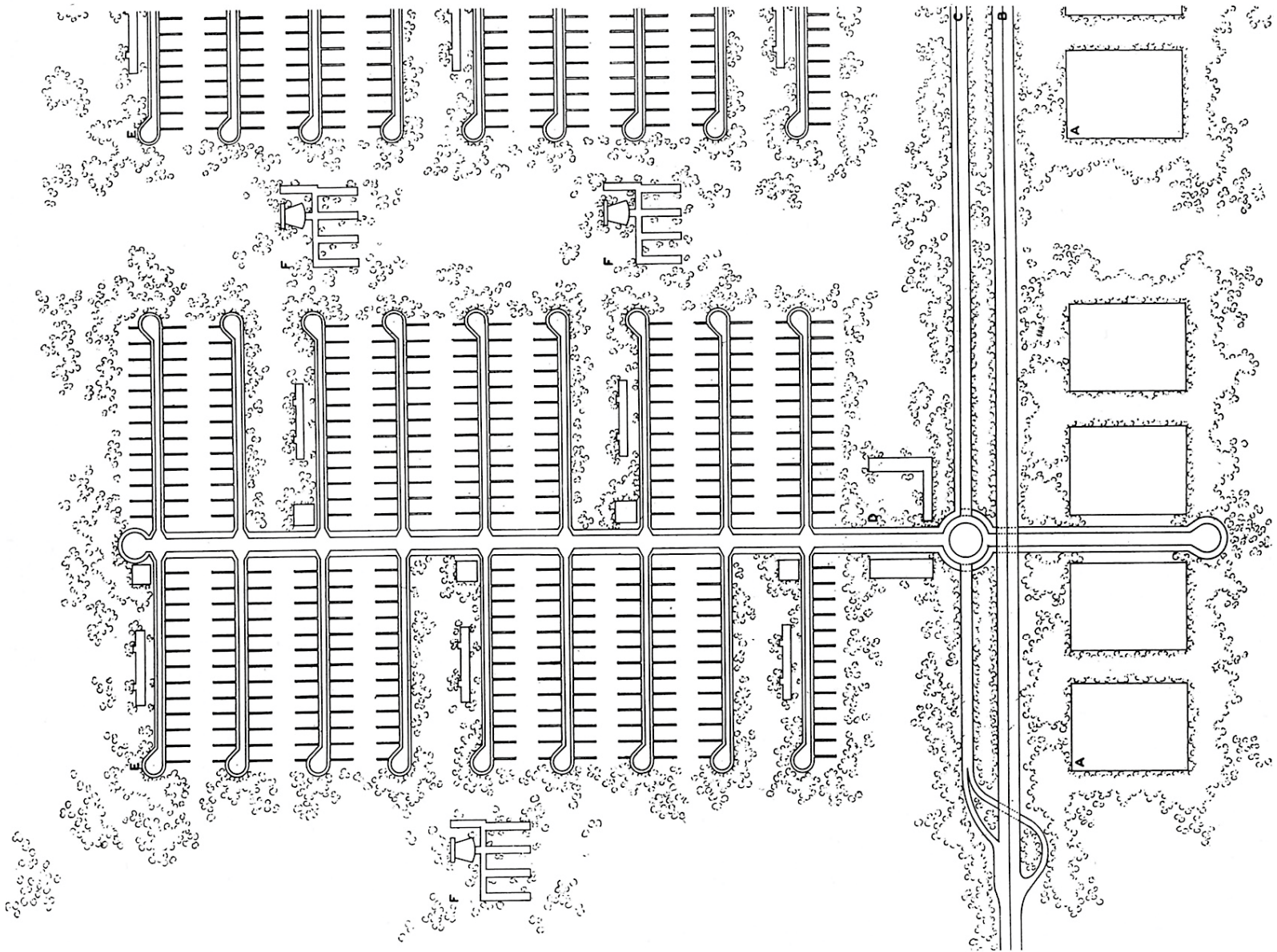
Le Corbusier:
Plan voisin 1925



**Frank Lloyd Wright:
Broadacre City 1933 - 34**



Ludwig Hilberseimer (1885-1967) : The New City 1944
Alfred Caldwell (1903-1998)



Ludwig Hilberseimer: The New City 1944



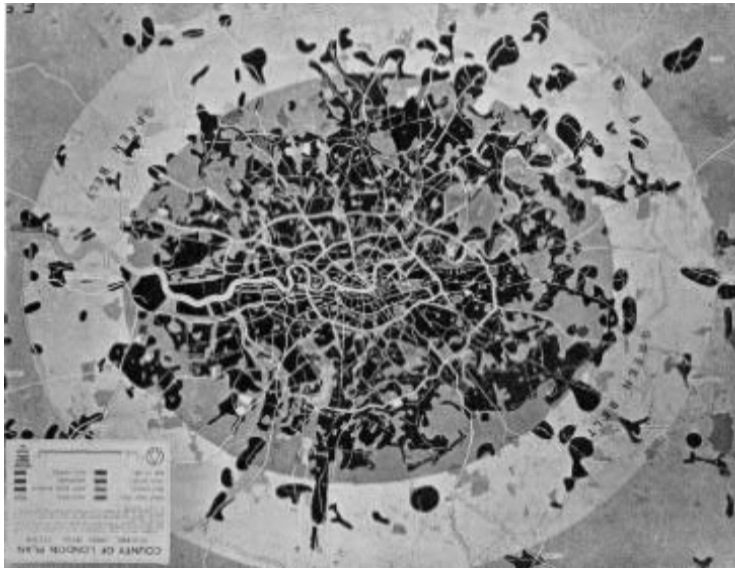
Patrick Abercrombie (1879-1957)

- **County of London Plan 1943**
- **The Greater London Regional Plan 1944**

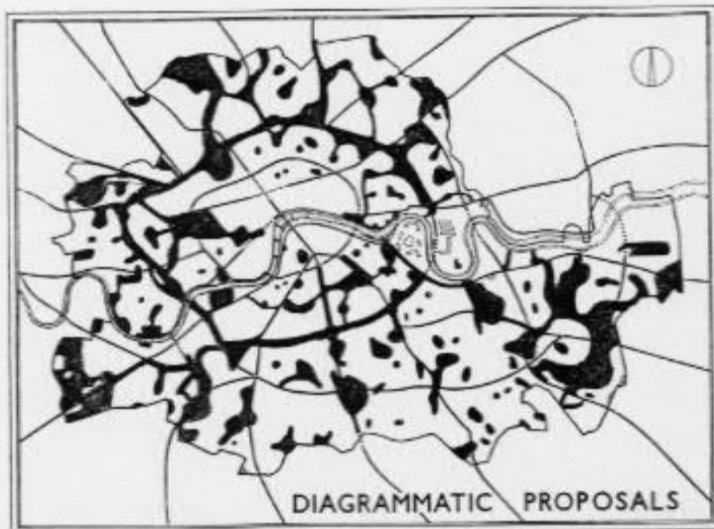
METROPOLITAN GREEN BELT 1935

CPRE / Campaign to Protect Rural England 1926

Town and Country Planning Act 1947



OPEN SPACE PLAN



”All forms of open space need to be considered as a whole, and to be co-ordinated into a closely linked park system, with parkways along existing and new roads forming links between larger parks

...

it becomes possible for the town dweller to get from the doorstep to open country through an easy flow of open space from garden to park, from park to parkway, from parkway to green wedge and from green wedge to Green Belt

...

The great advantage of the linking parkway is that it extends the radius of influence of the larger open spaces and brings the latter into more intimate relationship with the surrounding areas”

New Towns Act 1946

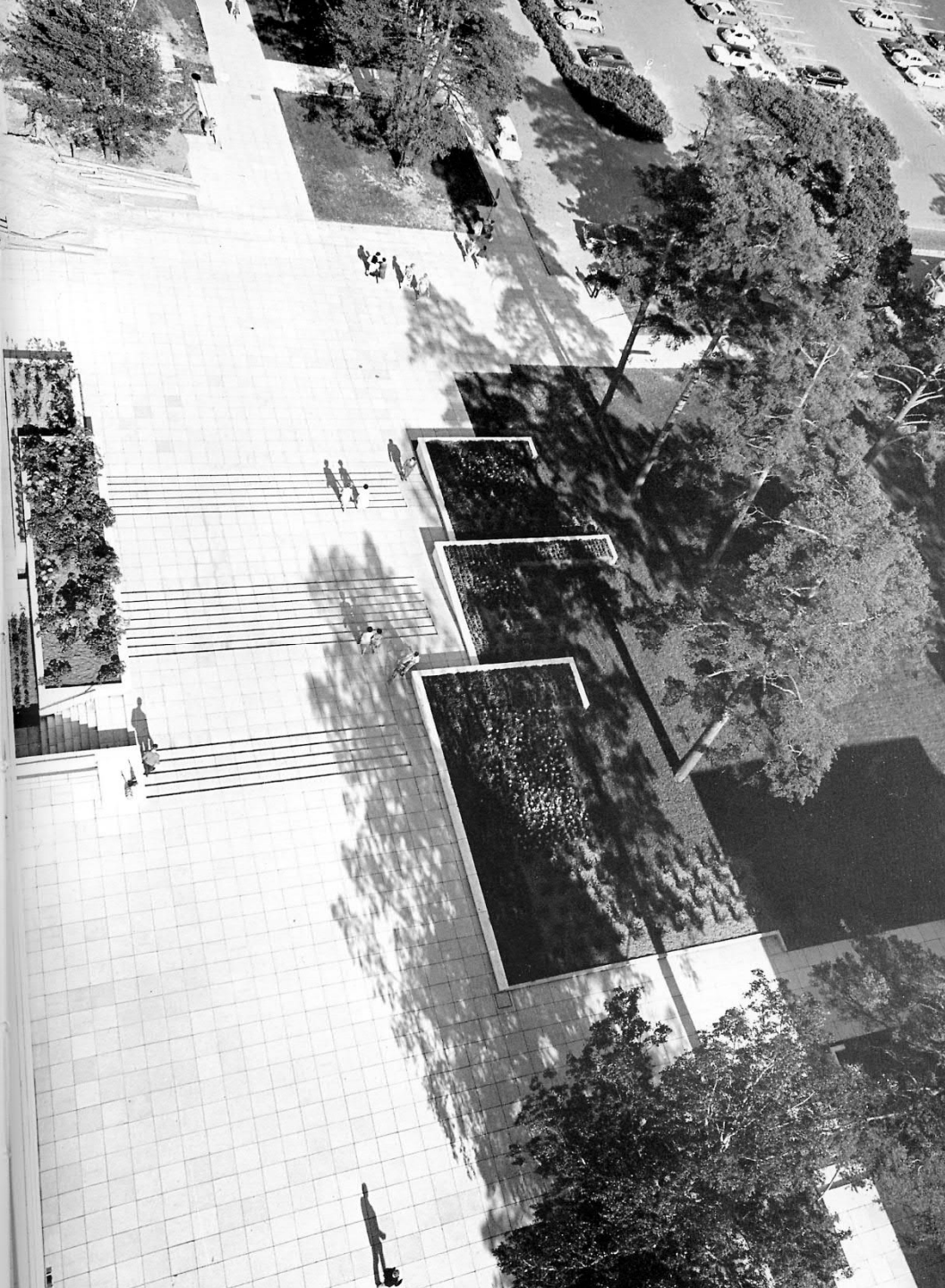
Stevenage	begun in 1946 for	60,000 inhabitants
Hemel Hempstead	1947	65,000
Crawley	1947	62,000
Harlow	1947	60,000
Hatfield	1948	26,000
Welwyn (an expansion of the Garden City)	1948	42,000
Basildon	1949	86,000
Bracknell	1949	25,000

six elsewhere in Britain:

Newton Aycliffe	begun in 1947 for	15,000 inhabitants
East Kilbride	1947	50,000
Glenrothes	1948	32,000
Peterlee	1948	25,000
Cwmbran	1949	45,000
Corby	1950	55,000

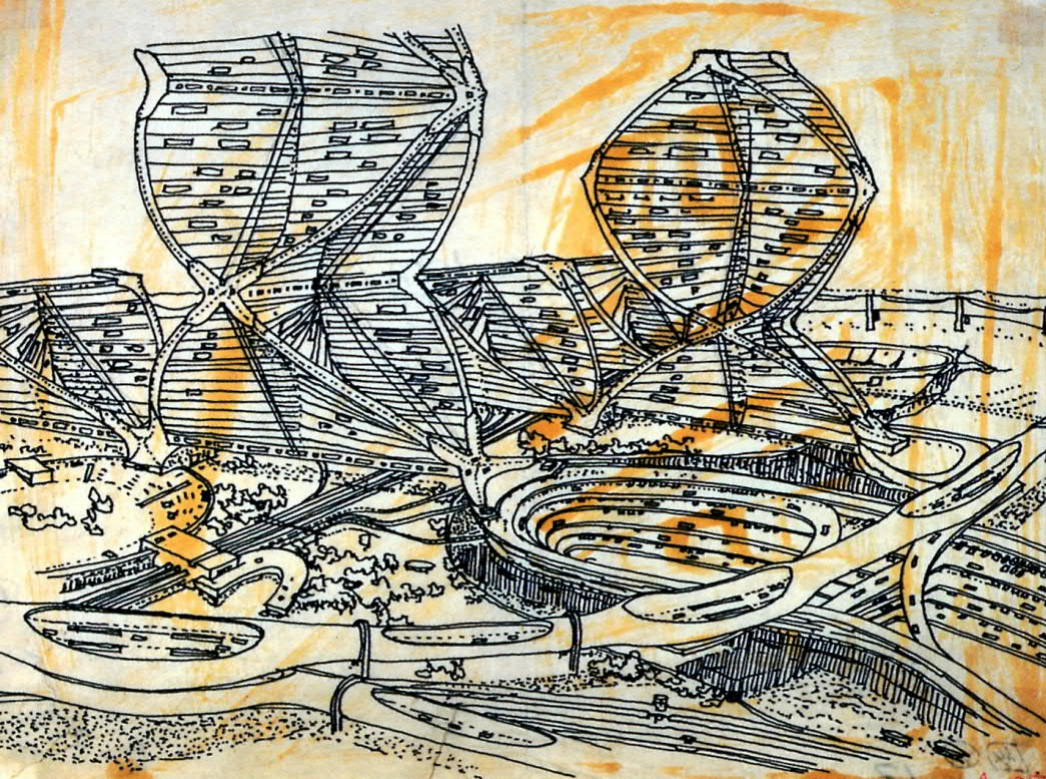


Fig. 1418 Cumbernauld, founded in the 1950s: the residential districts are distributed in a ring round the commercial centre (work on which had hardly begun when this photograph was taken); the industrial zones are further away, on the town's outskirts.

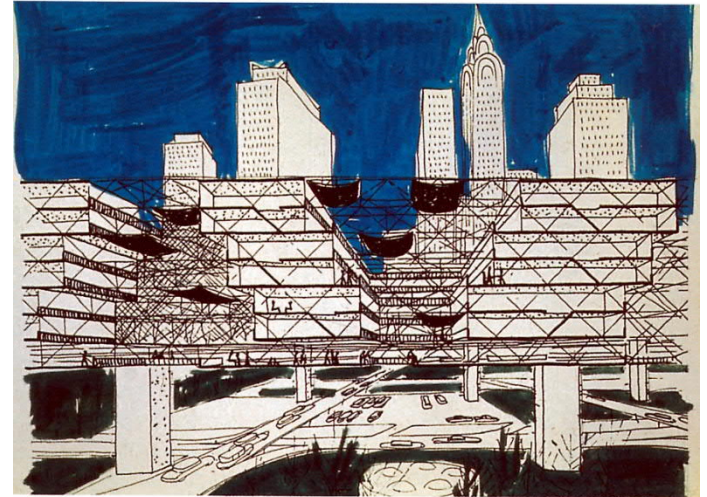
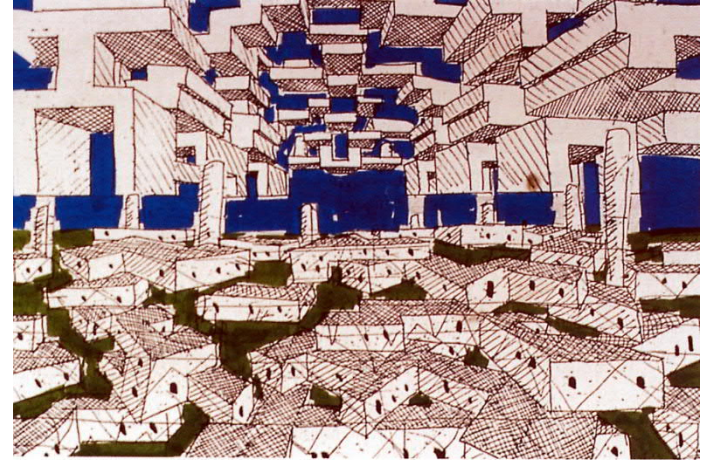


VÄESTÖLIITTO (1941), ASUNTOSÄÄTIÖ (1951)
Heikki von Hetzen (1913-1985):
Koti vaiko kasarmi lapsillemme? (1948)

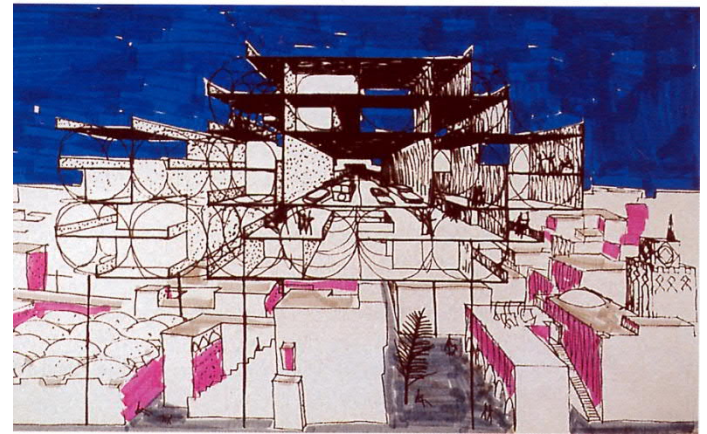




Kisho Kurokawa 1961

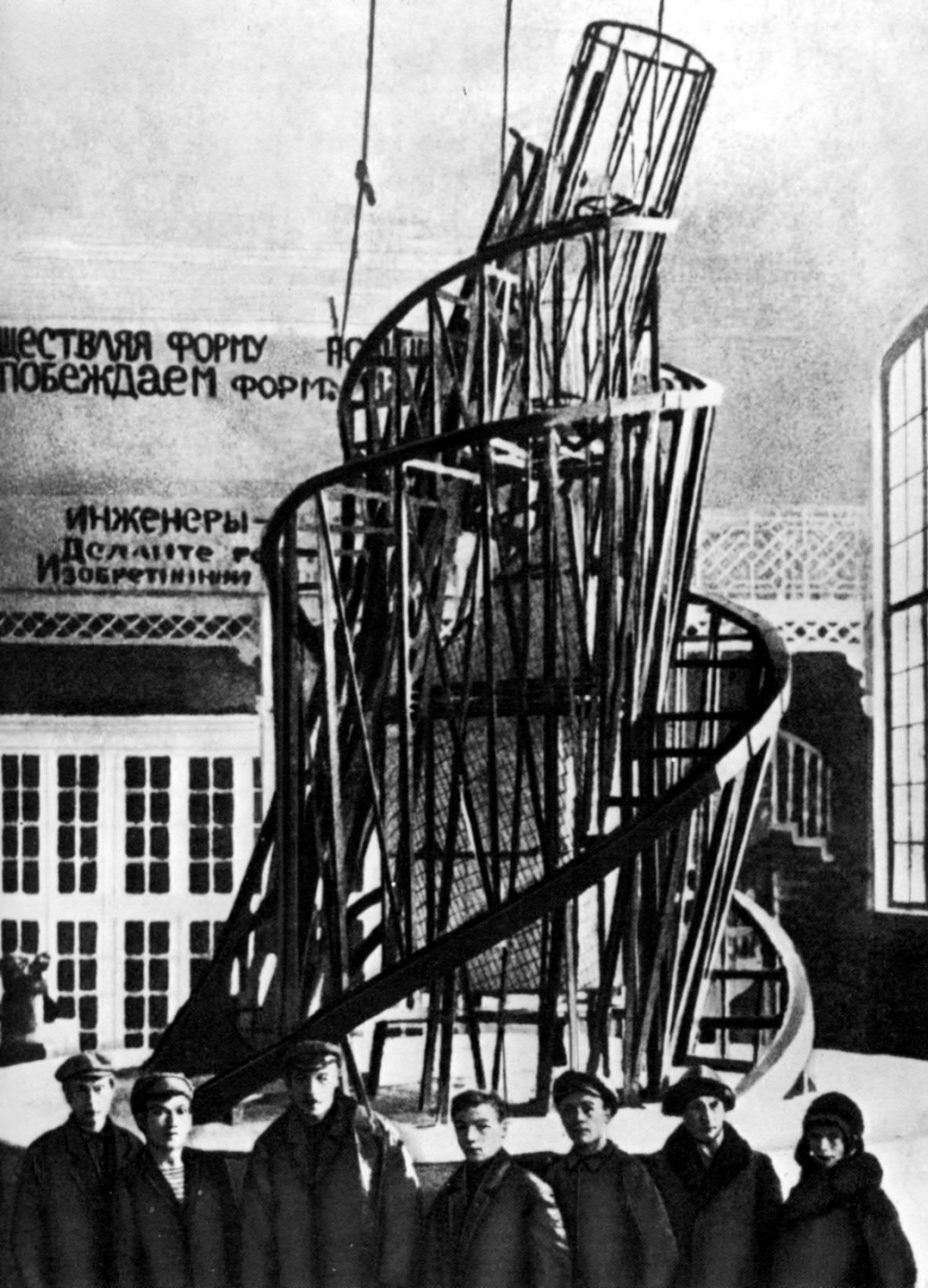


Yona Friedman 1950-60 –lukujen vaihde





Archigram / Ron Herron: Walking City – Cities Moving, 1964

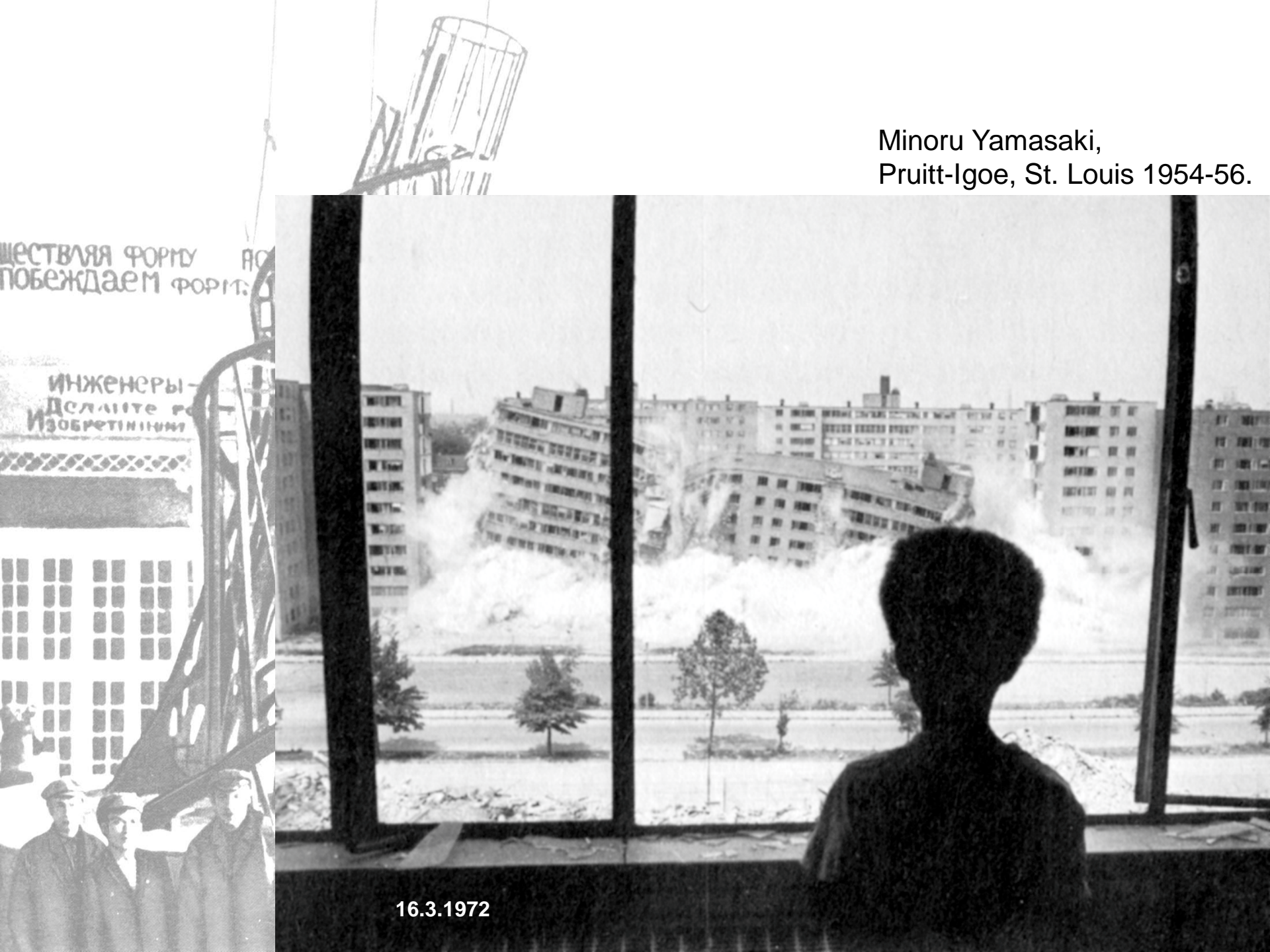


Tadehiko Nagakura,
3D rekonstruktio



Vladimir Tatlin (1885-1953)
Kolmannen internationaaln muistomerkki,
suunnitelma, Moskova 1920

Minoru Yamasaki,
Pruitt-Igoe, St. Louis 1954-56.



ШЕСТВАЯ ФОРМУ ПО
ПОБЕЖДАЕМ ФОРМУ

ИНЖЕНЕРЫ-
ДЕЛАЮТ РЕ
ИЗОБРЕТЕНИЯ

16.3.1972



Minoru Yamasaki,
Pruitt-Igoe, St. Louis 1954-56.

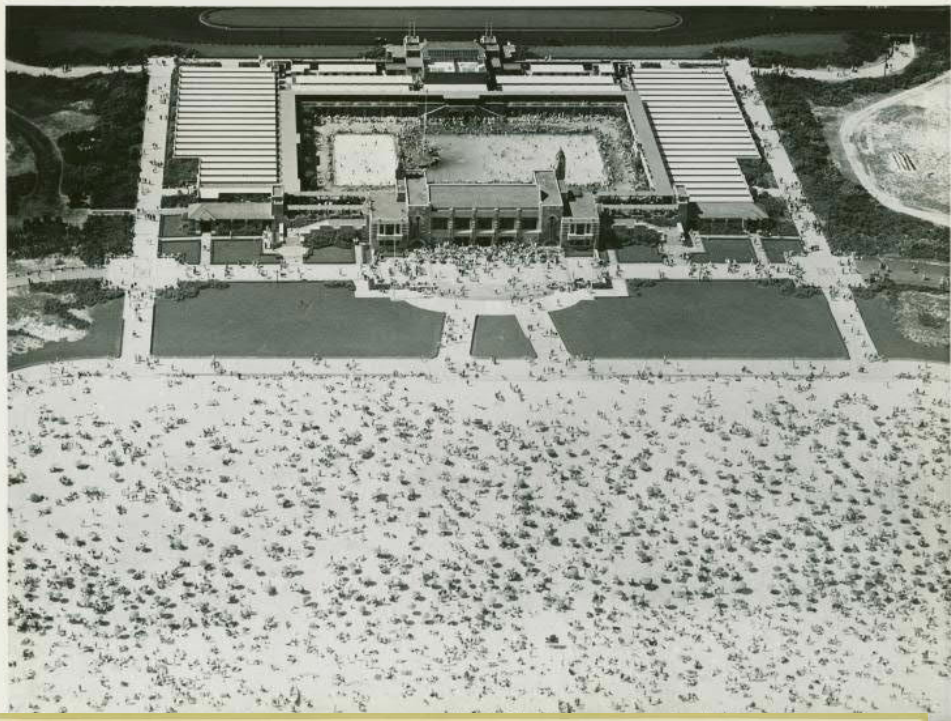


Robert Moses
(1888-1981)

City and State Parks Commissioner



Brooklyn-Battery Bridge



29 photo





Lower Manhattan Expressway



fedEx

COMMERCIAL ST

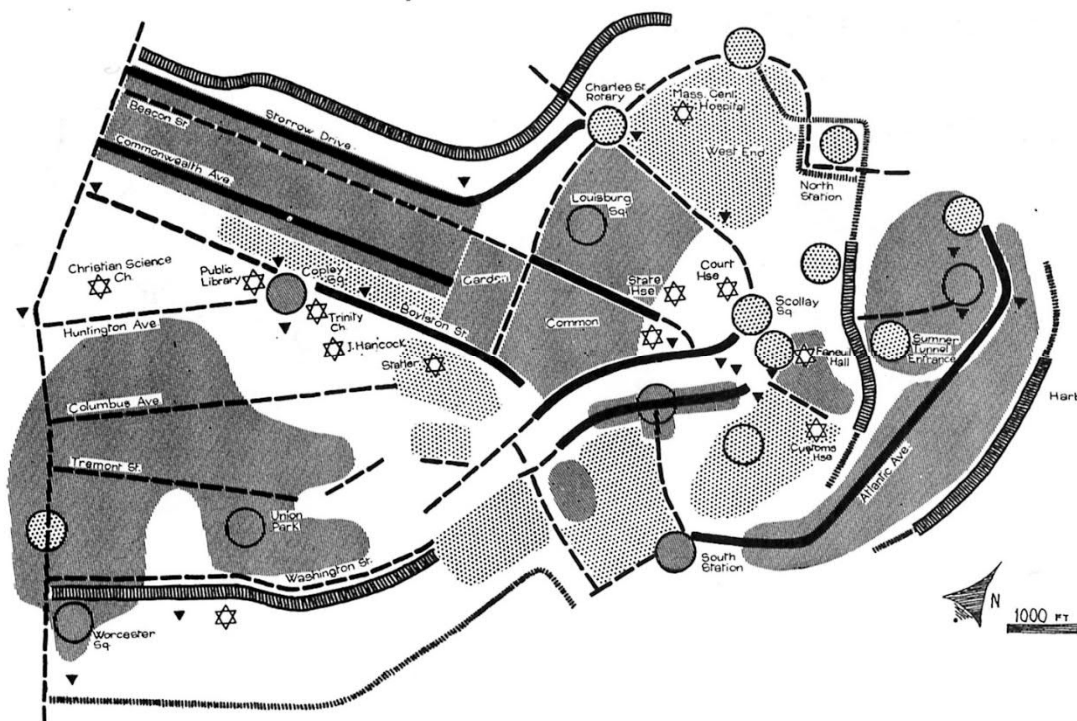
STOP



THE DEATH
AND LIFE
OF GREAT
AMERICAN
CITIES

JANE JACOBS

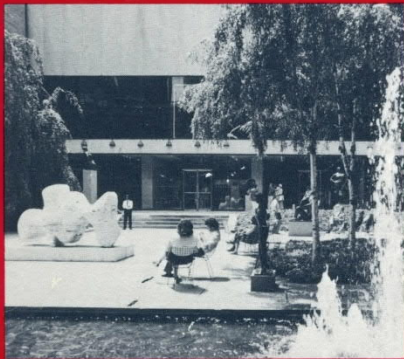
Jane Jacobs (1916-2006)



**Kevin Lynch (1918-1984):
The Image of the City, 1960.
Site Planning, 1962**

**Gordon Cullen (1914-1994):
Townscape 1961.**

The Social Life of Small Urban Spaces



William H. Whyte



The Conservation Foundation

CITY

Rediscovering
the Center

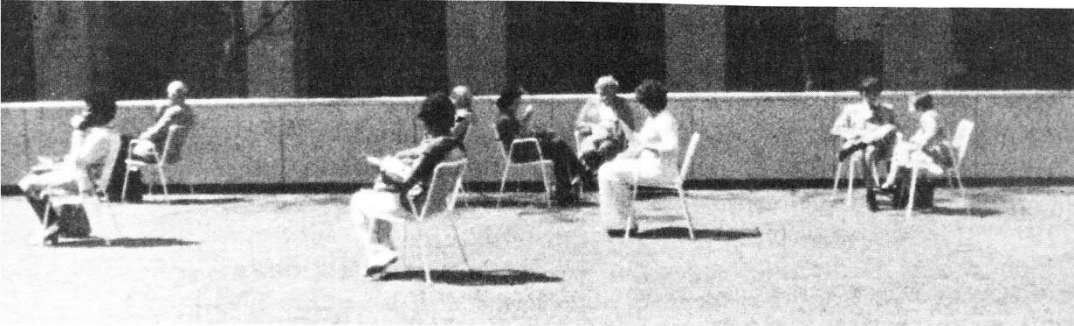
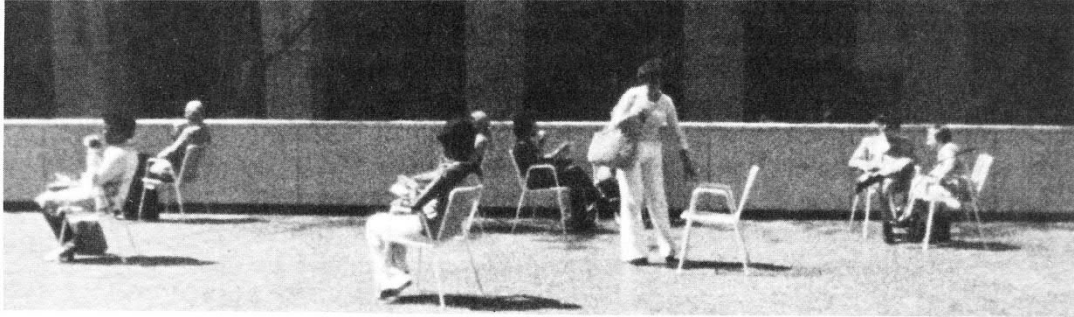
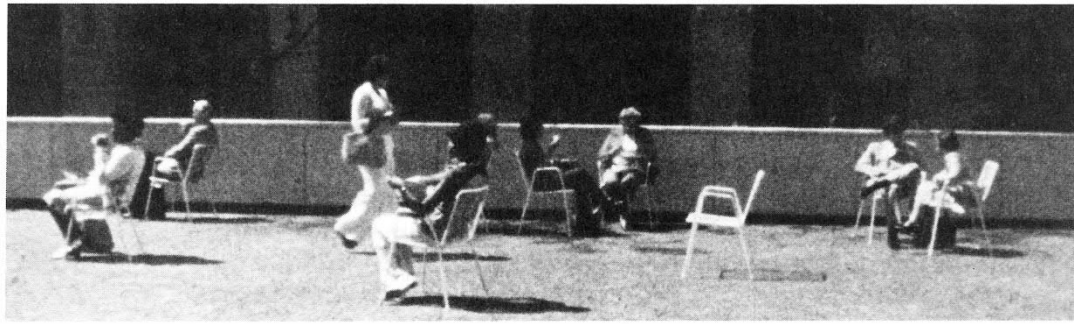
WILLIAM H. WHYTE

AUTHOR OF "THE ORGANIZATION MAN"

William "Holly" Whyte (1917 – 1999)

- amerikkalainen sosiologi, lehtimies, vaikuttaja
- "Street Life Project"
- 'The Social Life of Small Urban Spaces' (1980)
- 'City: rediscovering the Center' (1988)





Bryant Park, NYC

- perustettu 1884
- uudelleen rakennettu 1934
- kunnostus 1979 – 1983
- Bryant Park Restoration Corporation











TITAN
GOES GOOD
TOGETHER.

7T57

CENTRAL PARK









BRYANT PARK

BREADS BAKERY

BREADS BAKERY

42 St-Bryant Park
Station
B D F M 7



Reading Room
BRYANT PARK

HSBC

HSBC

Reading Room
BRYANT PARK

HSBC

Reading Room
BRYANT PARK

Reading Room

HSBC Daily

Reading Room
BRYANT PARK

HSBC presented by

BRYANT PARK

Bryant Park



- A** NEW YORK PUBLIC LIBRARY: Stephen A. Schwarzman Building
 - B** LIBRARY TERRACE
 - C** UPPER TERRACE
 - D** FOUNTAIN TERRACE
- | Attractions | Concessions | Sculpture and Monuments |
|--------------------------------|--|---|
| 1 The Rink | 9 Celsius | 15 Shaw Lowell Memorial Fountain |
| 2 Skating Pavilion | 10 Bryant Park Grill | 16 Goethe Monument |
| 3 Holiday Shops* | 11 'wichcraft Express | 17 Stein Monument |
| 4 Le Carrousel | 12 'wichcraft Coffee | 18 Bryant Memorial |
| 5 Southwest Porch | 13 'wichcraft Sandwiches, Salads, Soups | 19 Dodge Monument |
| 6 Pétanque Courts | 14 'wichcraft Grilled Cheese & Soup | 20 Juárez Monument |
| 7 The Tables: Ping Pong | | 21 Andrada Monument |
| 8 Shoe Shine Stand | | |

- Subway **B D F M 7**
- Wheelchair Access
- Restroom
- Newsstand
- History Panel

*Throughout the park from November to January, see Holiday Shops brochure for more information.

For more information about Bryant Park, go to bryantpark.org

Follow us





TOSHIBA

TOSHIBA
Leading

CELEBRATE
GREAT
TASTE

DUNKIN' DONUTS

SINCE
1876

Budweiser

21ST CENTURY FOX



SONY

TRANSFER PACT



THE ACTION
BY TOMMY LEE
REVOLUTION

TODAY'S

LIL' KIM



TWIZEN

LOVEISON



WE'LL PAY YOU
SWITCHING

NYPD

NEW YORK POLICE DEPT





TOP OF THE SHIRE

TOSHIBA

THE Manhattan Companion

SONY ILLUMIPLAN

SONY ILLUMIPLAN

SONY ILLUMIPLAN

SONY ILLUMIPLAN

SONY ILLUMIPLAN

SONY ILLUMIPLAN

SONY ILLUMIPLAN

SONY ILLUMIPLAN

SONY ILLUMIPLAN

SONY ILLUMIPLAN

SONY ILLUMIPLAN

SONY ILLUMIPLAN

SONY ILLUMIPLAN

SONY ILLUMIPLAN

SONY ILLUMIPLAN

SONY ILLUMIPLAN

SONY ILLUMIPLAN

SONY ILLUMIPLAN

SONY ILLUMIPLAN

SONY ILLUMIPLAN

SONY ILLUMIPLAN

SONY ILLUMIPLAN

SONY ILLUMIPLAN

SONY ILLUMIPLAN

SONY ILLUMIPLAN

SONY ILLUMIPLAN

ROSE HULMAN
"A BIG FAT HIT!"
KIDZ BEATS
ROSE HULMAN
"A BIG FAT HIT!"
KIDZ BEATS

WAITING
AT UPGRADE
OUT THE DOOR

MARRIOTT MARQUIS

JUST SKYE
I'M YOURS
FEAT. W.C. MAENSSA

JUST SKYE
I'M YOURS
FEAT. W.C. MAENSSA



THE GREAT GIFT

AMERICAN EAGLE OUTFITTERS

AMERICAN EAGLE
OUTFITTERS

THE BEST MUSICAL!
TONY AWARD WINNER
FINAL PERFORMANCE JANUARY 17TH

A GENTLEMAN'S
GUIDE
LOVE & BETTERIES
NO JOKE!
THIS IS IT!

GRAND

FRANCIS BEECHER
"A BIG FAT HIT!"
KIDZ BEATS
FRANCIS BEECHER
"A BIG FAT HIT!"
KIDZ BEATS

THE GREAT GIFT

BROADWAY
UP TO
IN 3
TODAY
TIX



Deposit Checks Right Away

Math of South
oding

SEPHORA

STARBUCKS
COFFEE

sdag

BUL
IGH

21ST CENTURY FOX
α7 α7s α7r α7s

SONY
MICROSOFT U

NEW YORK

SnackBox
HOTDOGS LOBSTER ROLLS
PRETZELS DOUGHNUTS

WE'LL
SWITCH



Levi's

BUBBA GUMP
RESTAURANT MARKET

VIACOM

VIACOM

THE LION KING

WICKED

Coca-Cola

Toyota Trucks
'Fail Mary'

Levi's

TIMES SQUARE

ONC

WICKED

SHOW THEM WHY YOU LOVE YOU

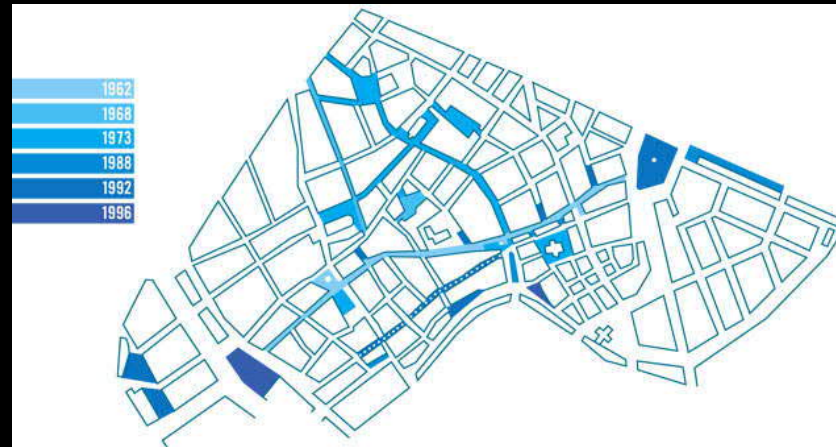
OCTOBER 10
THE WINERY DOGS
FALCONER LIVE PRESENTS GIRLS NIGHT IN
EMANCIPATOR ENSEMBLE

OPENING SOON

Jan Gehl (1936 -)

- Livet mellem husene, 1971
- Life between buildings, 1987
- New city spaces, 2000
- New city life, 2006





Number of people hanging out on a summer afternoon





Nytorv



Nyhavn



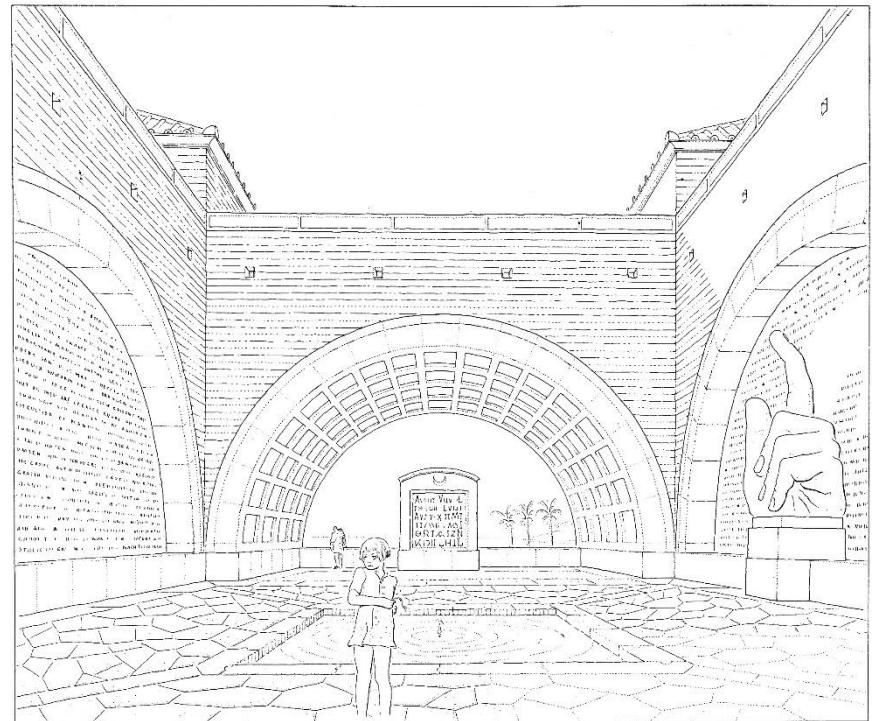
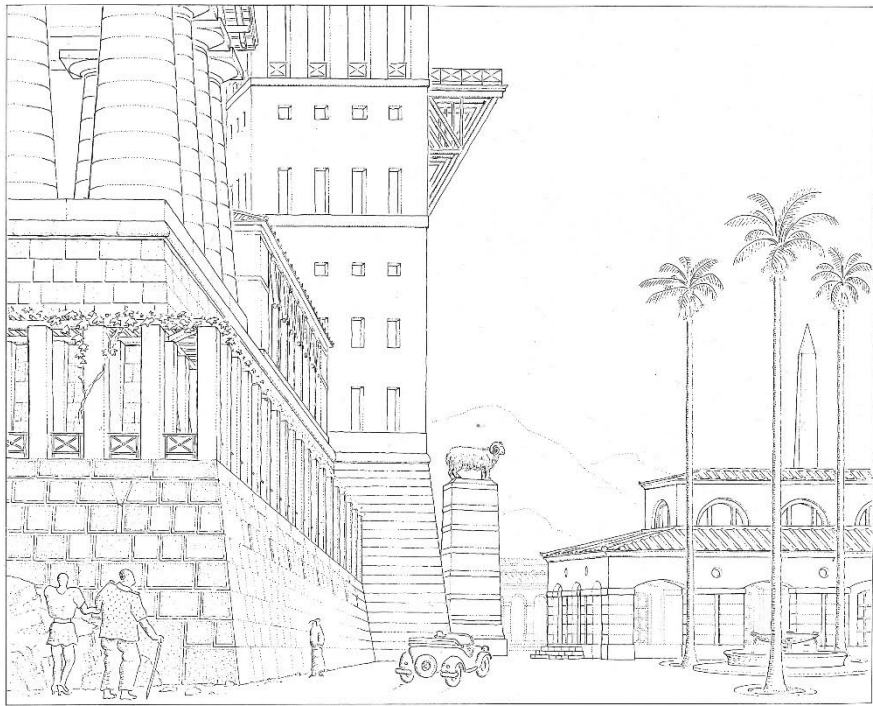
Ved stranden



Strøget



Amager Torv
Bjørn Nørgaard, 1993





Poundbury, UK





Jakriborg, Skåne

ROB KRIER

ARCHITECTURAL COMPOSITION



RIZZOLI
NEW YORK



LEON KRIER

HOUSES, PALACES, CITIES



Guest-Edited by Demetri Porphyrios

ROB KRIER

URBAN SPACE

Foreword by Colin Rowe

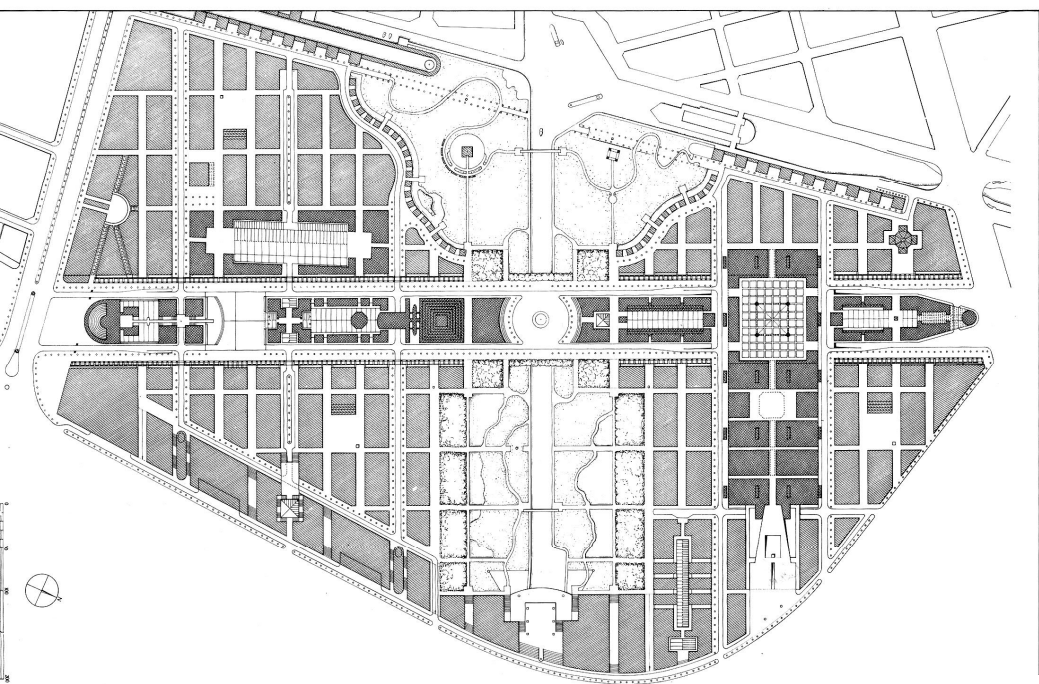


ROB KRIER

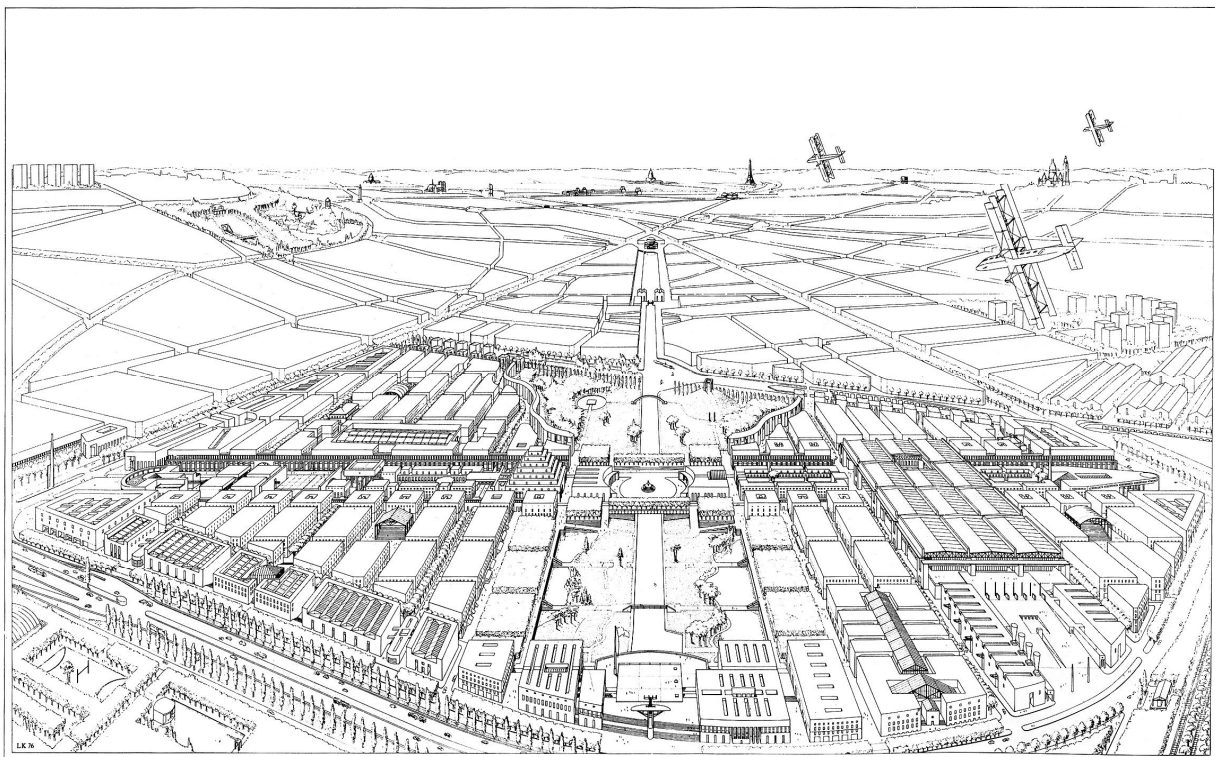
ON ARCHITECTURE



ACADEMY EDITIONS/ST. MARTIN'S PRESS

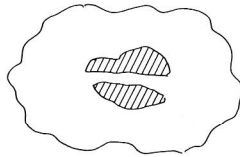


MASTER PLAN OF THE NEW QUARTERS OF LA VILLETTE

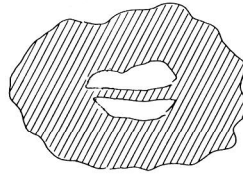


1850 ~ 1950

THE FORMATION of the INDUSTRIAL ANTI-CITY
(INDUSTRIAL CITY = CONTRADICTION in TERMINI)



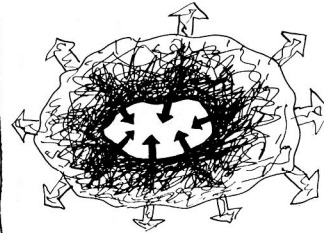
INDUSTRIAL
SUBURB.
BANLIEU · FAUBOURG
VORORT.
SATELLITES · TRABANTEN
BESIEGE
the CITY



The CITY is
FINE
WITHOUT SUBURB

SUBURB
UNTHINKABLE

WITHOUT the CITY



SUBURBS
FIRST
DESTROY the

LANDSCAPE & FORESTS
AND THEN
the
CITY

SUBURB ^{not} URBS · BANLIEU ^{not} LIEU · FAUBOURG ^{not} BOURG · VORORT ^{not} ORT

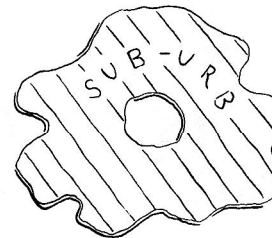
THE HANGMAN and its VICTIM
THE ANTI-CITY is out to KILL the CITY



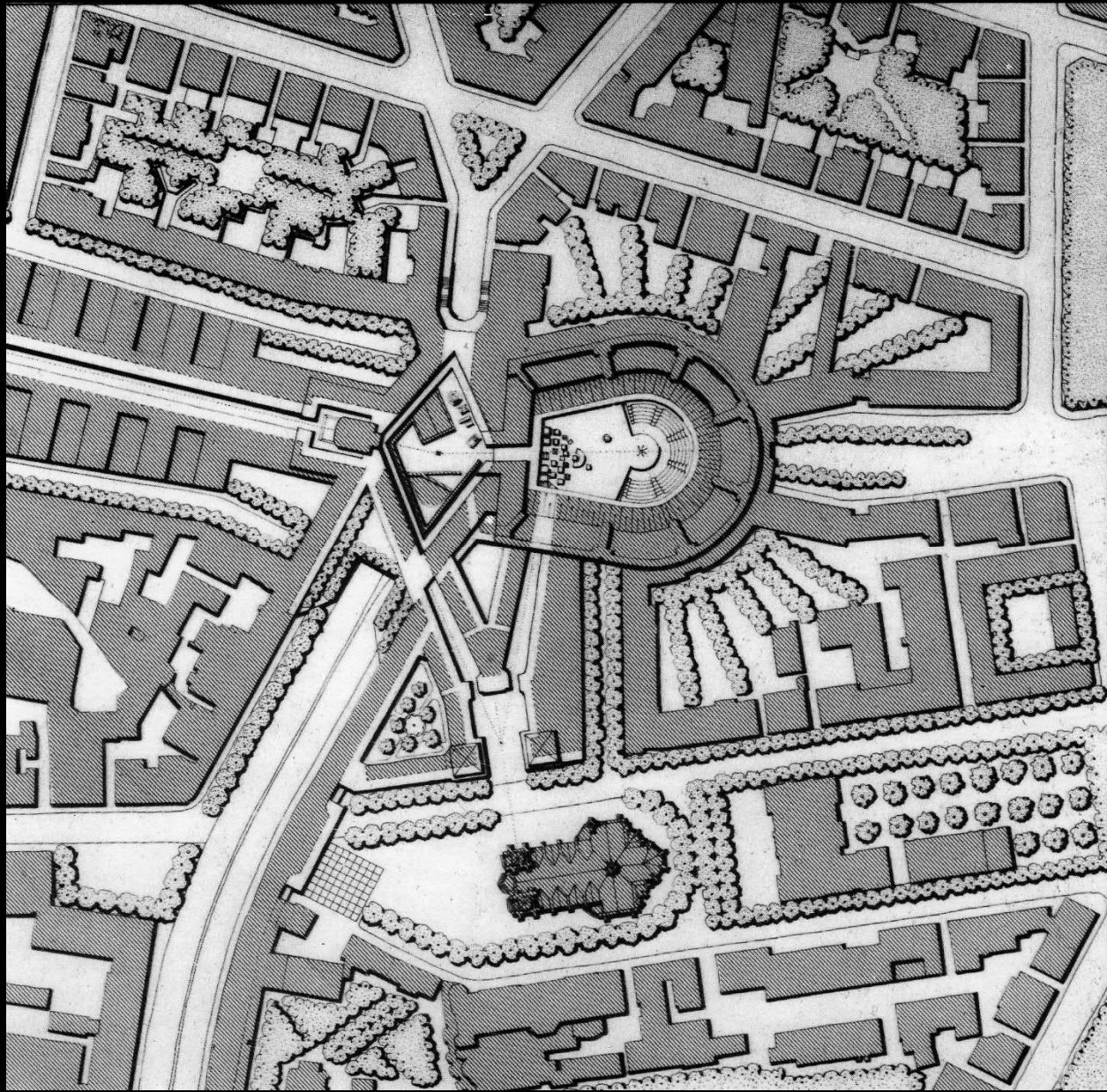
CITY
and
LANDSCAPE
a good
MARRIAGE

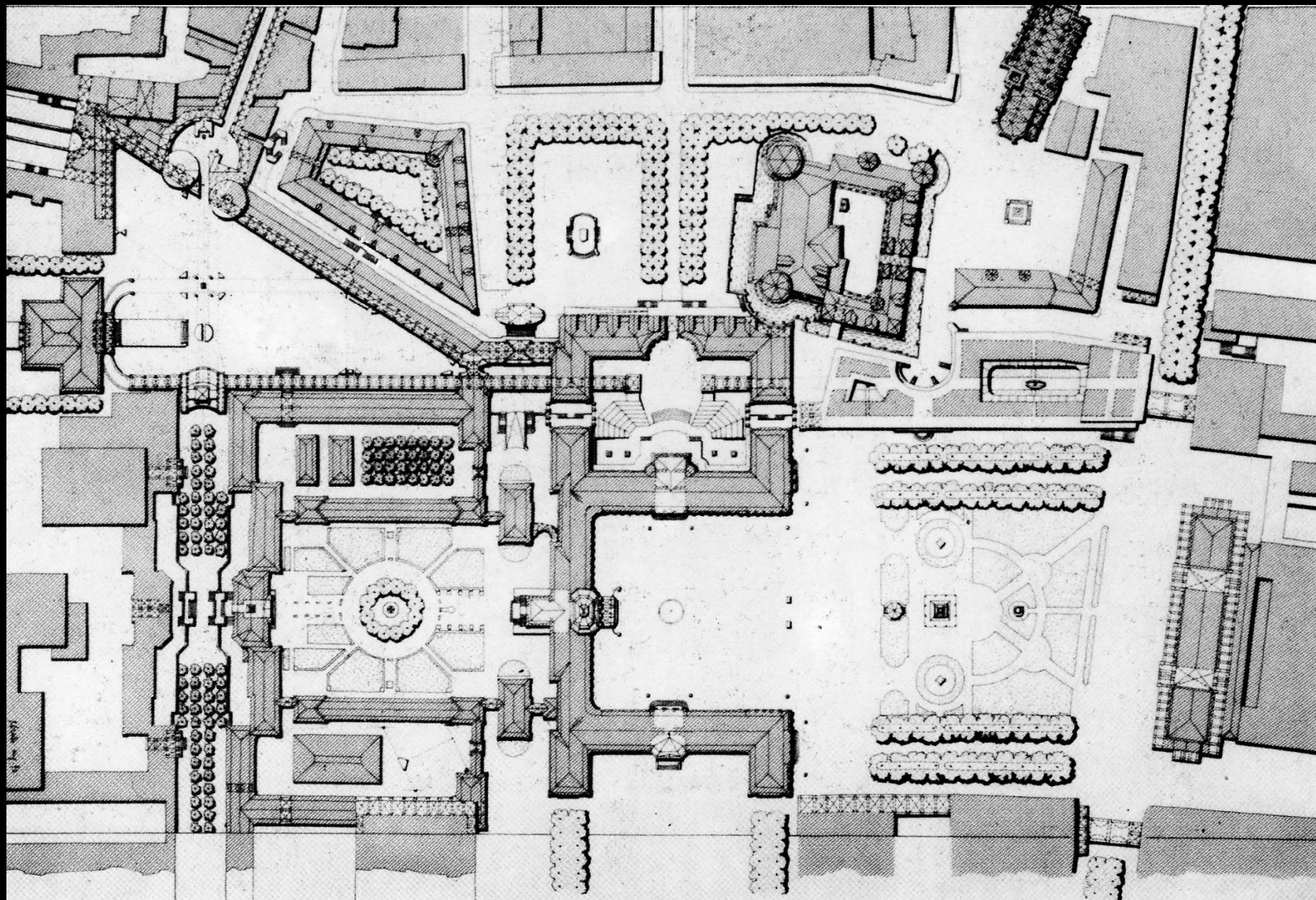


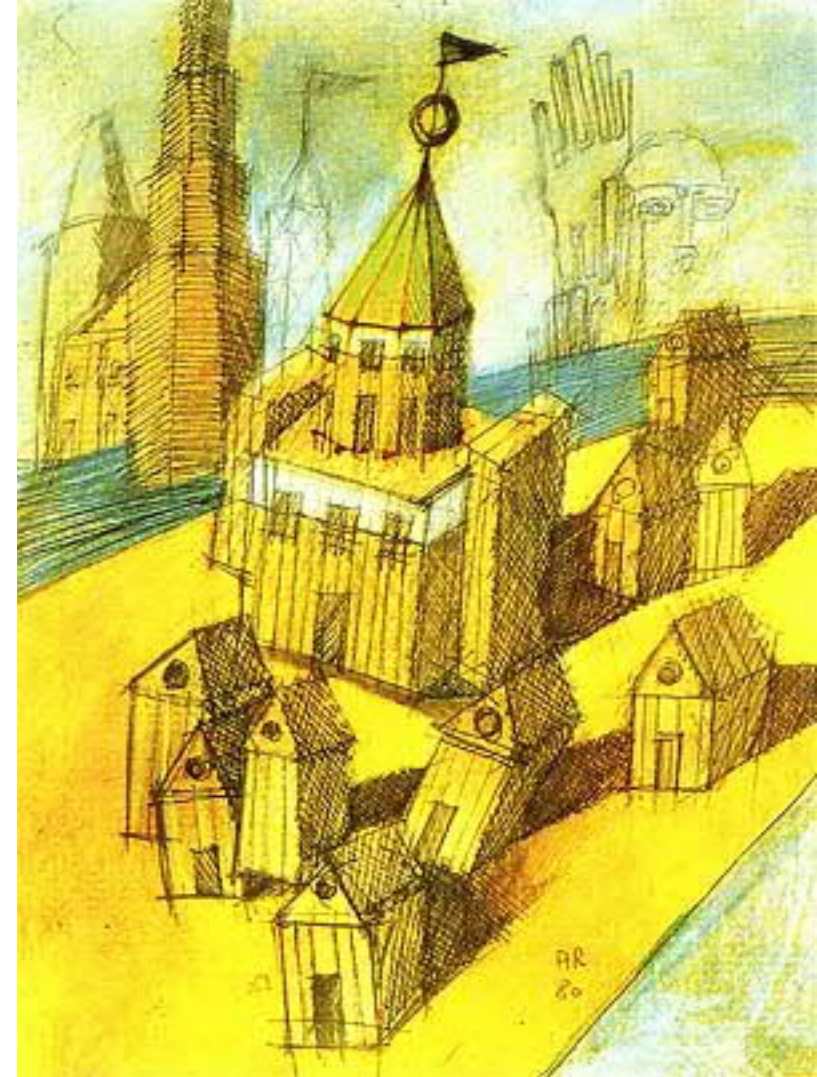
this CITY is no longer
a true CITY
this LANDSCAPE no longer
a true LANDSCAPE
SUBURB ALWAYS
DEFEATS BOTH



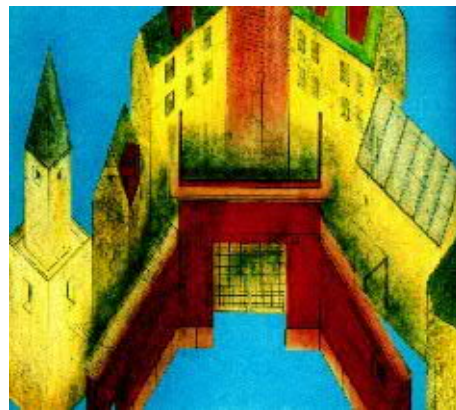
a SUBURB
WITHOUT a
CITY
WILL FIND ITS VICTIM
at whatever EXPENSE
EFFORT or DISTANCE

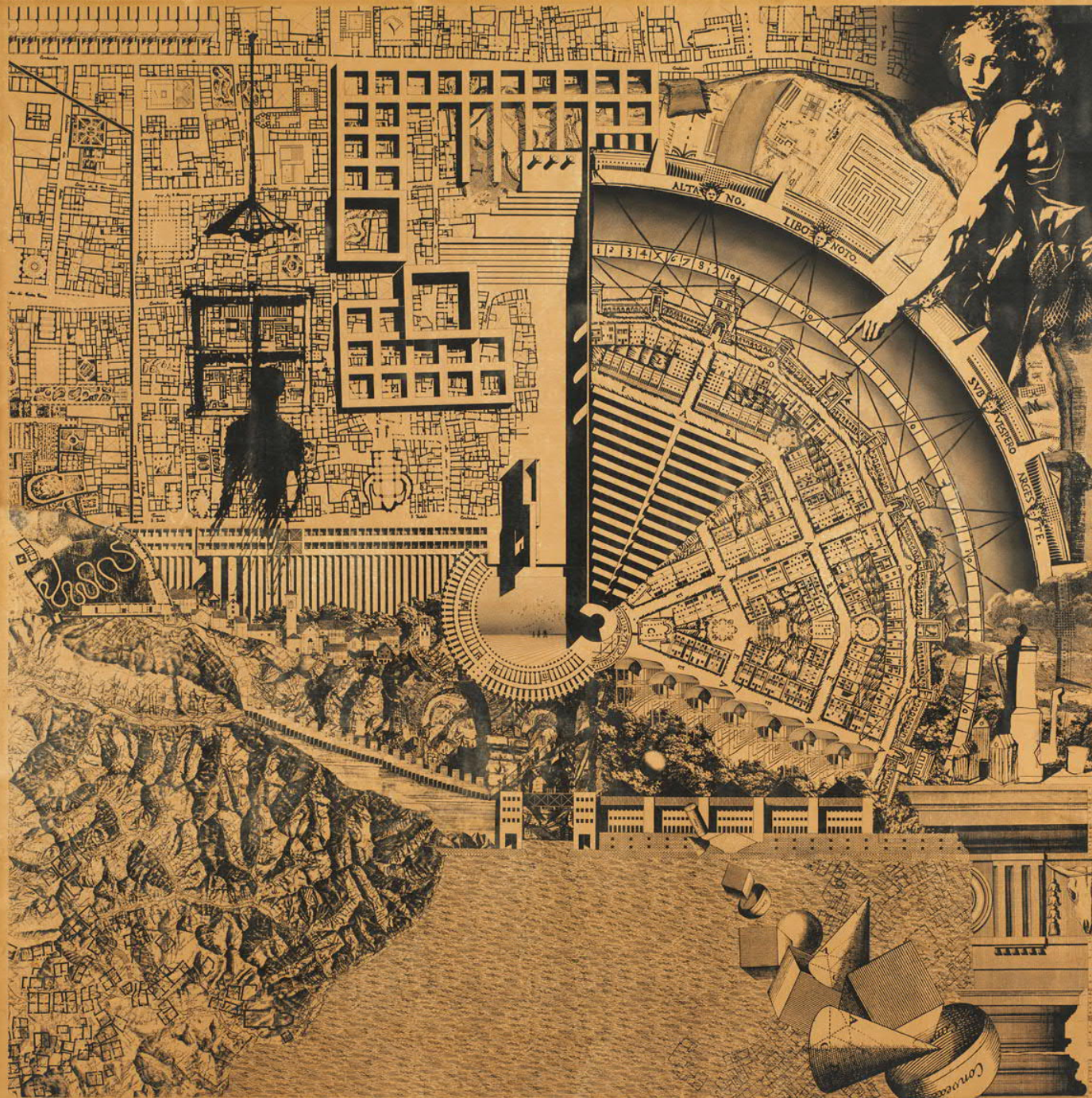




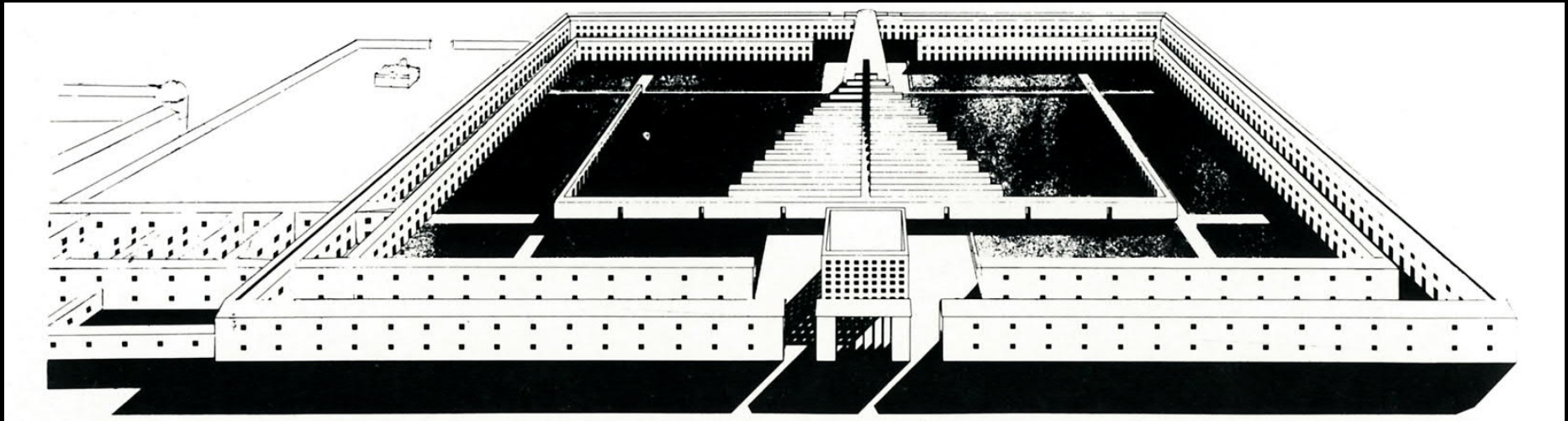


Aldo Rossi:
L'architettura della città.
1966
The Architecture of the City.
1982

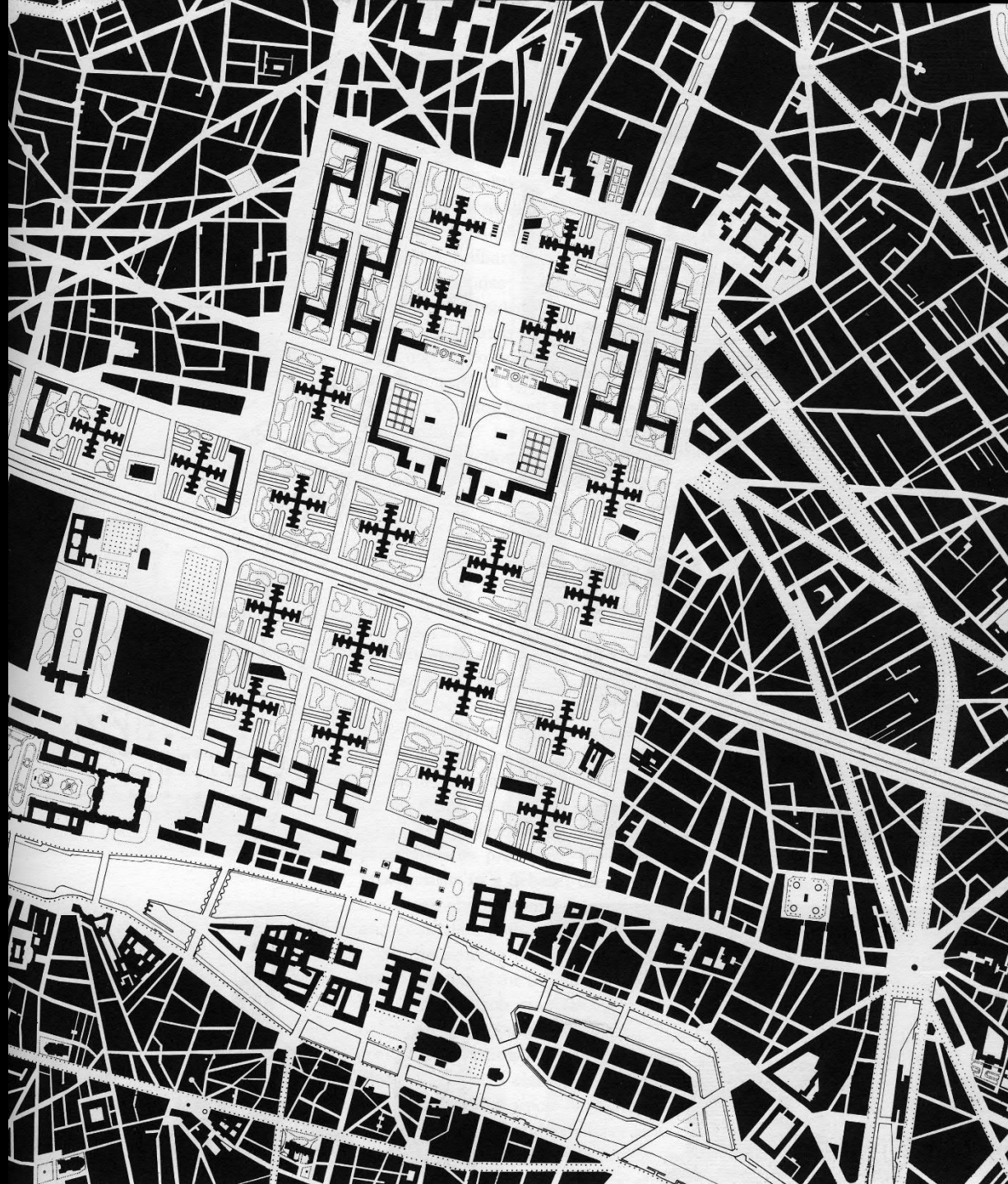




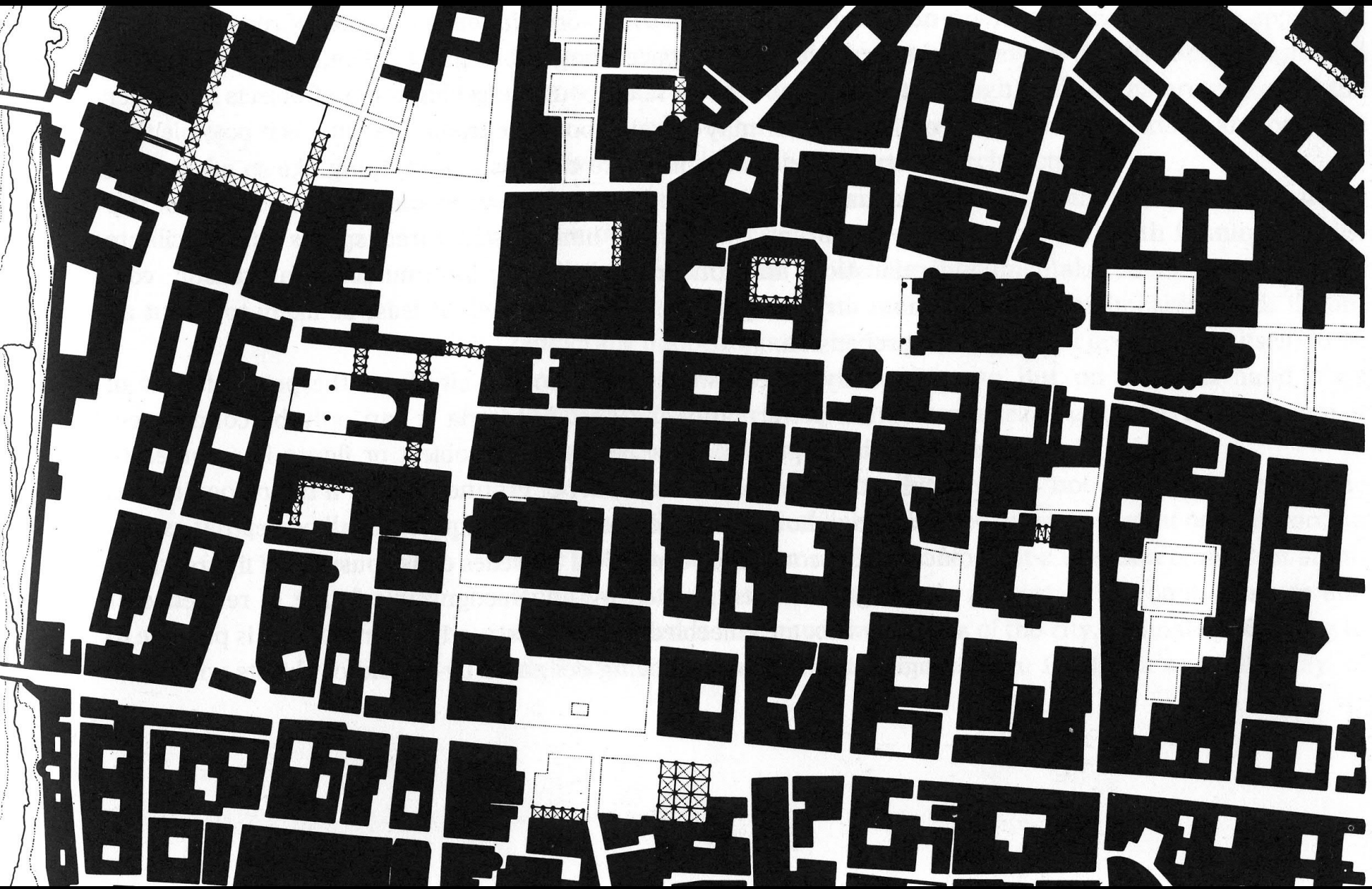
Aldo Rossi:
La città analoga.
1976

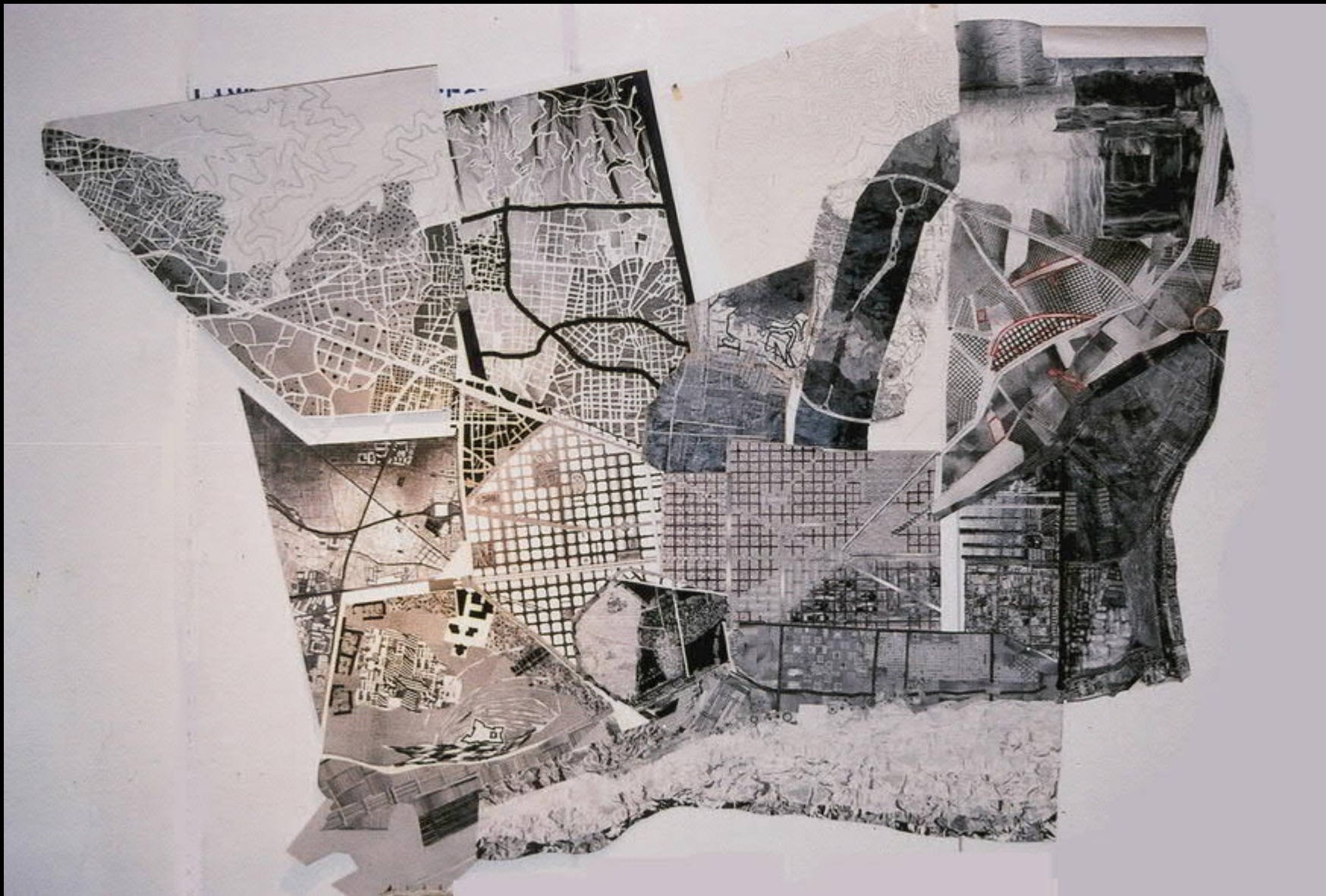


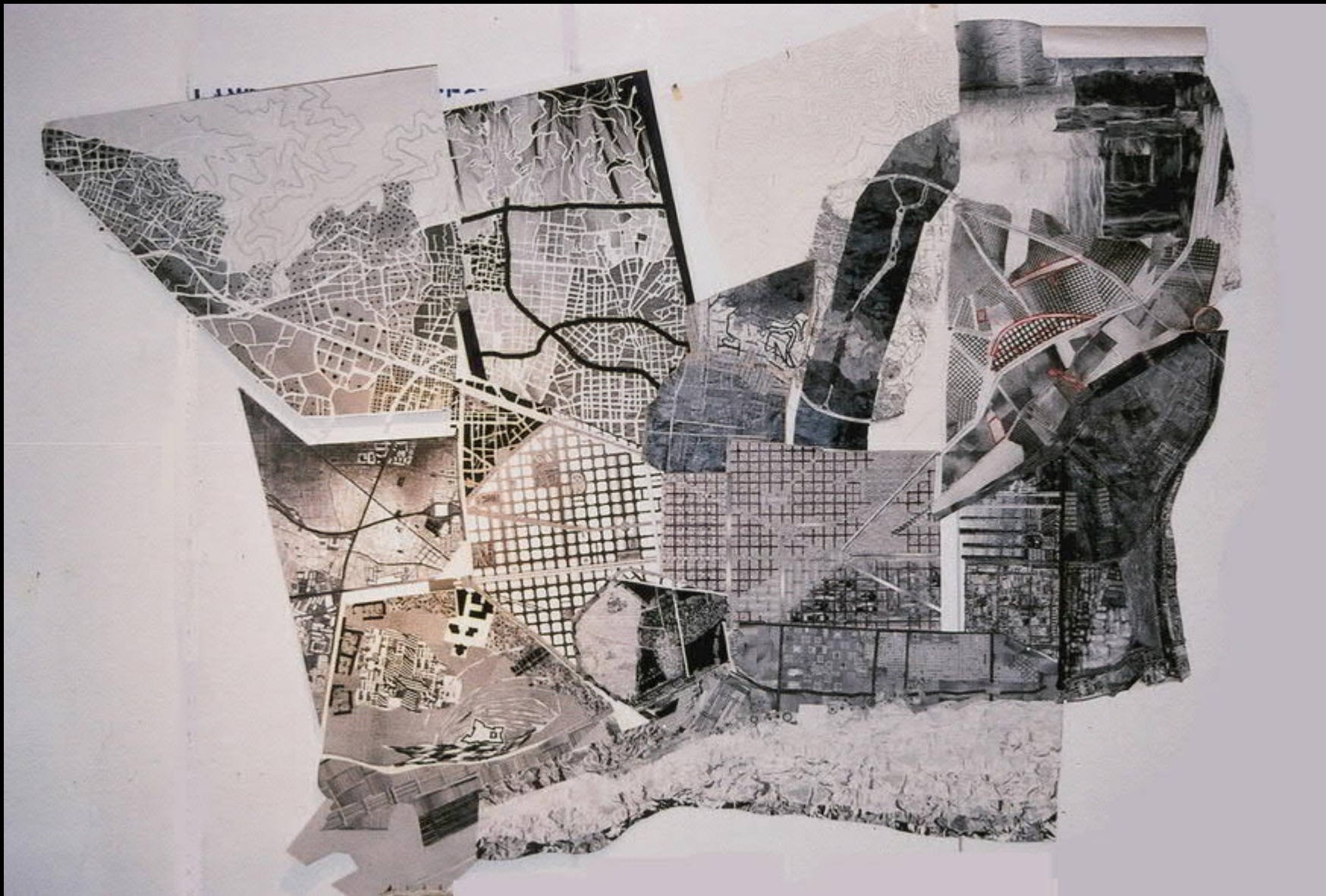
Aldo Rossi: Modenan hautausmaa 1980-luku



**Colin Rowe & Fred Koetter:
Collage City
1983**

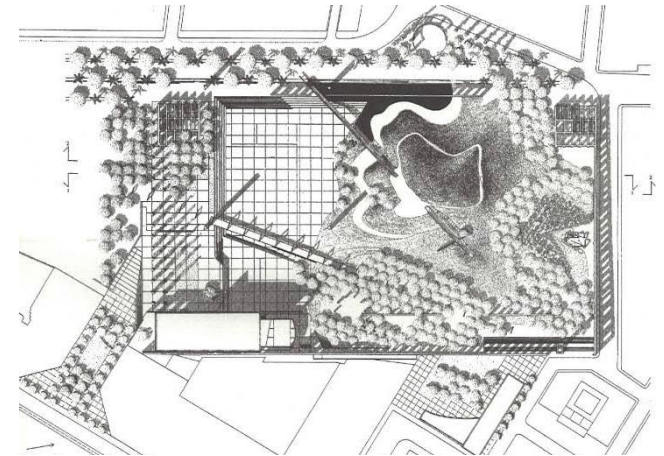








Parc del Clot 1982-86
Dani Freixet, Vincente Miranda



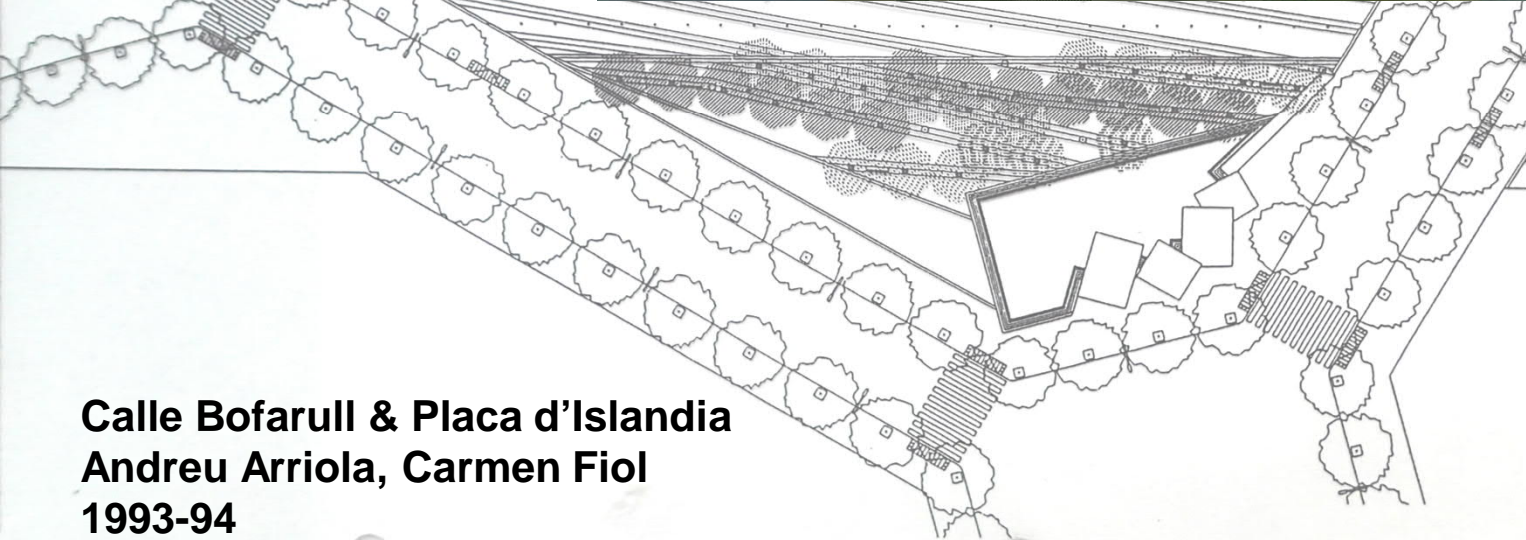
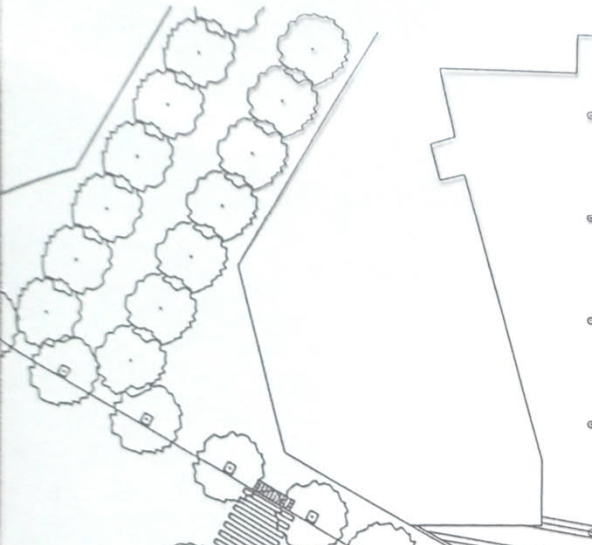












Calle Bofarull & Placa d'Islandia
Andreu Arriola, Carmen Fiol
1993-94



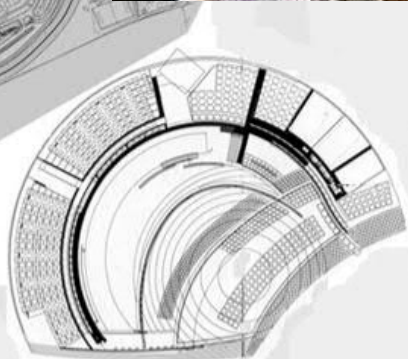
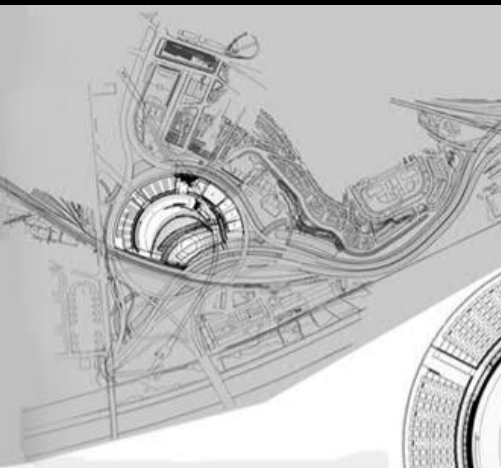












Joan Roig & Enric Battle
Parc Nus de la Trinitat
Barcelona 1993

















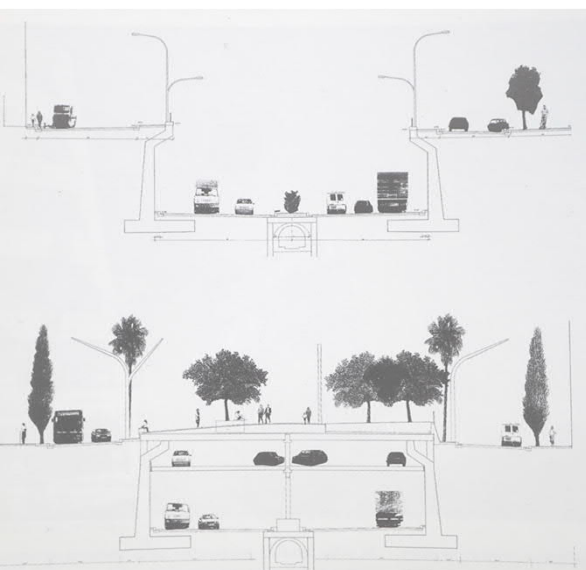




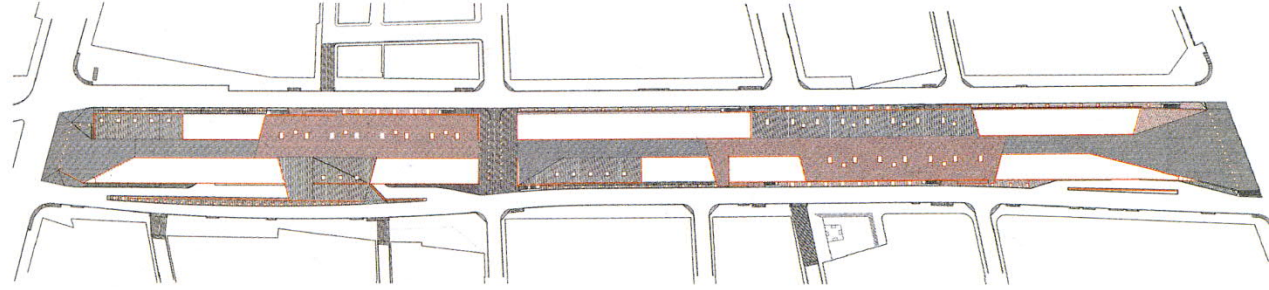




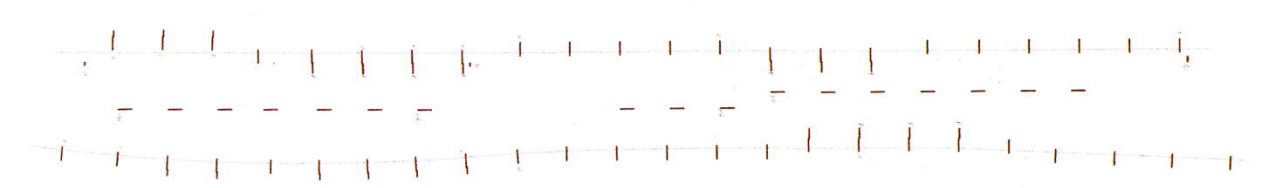
Olga Tarrasó, Jordi Henrich: Ronda del Mir Barcelona 1996-97



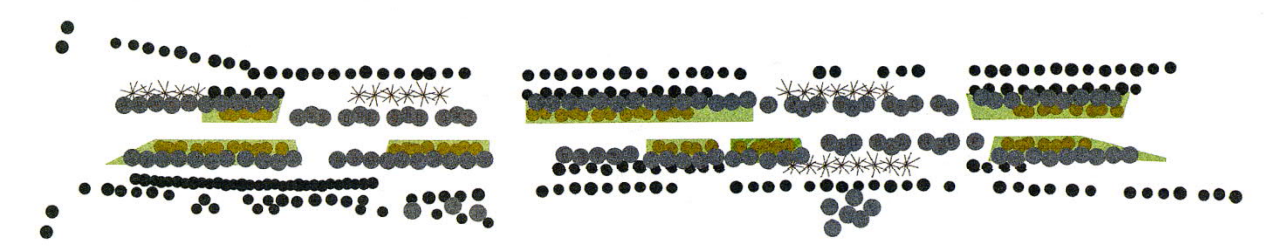
Pavimentación.
Paving.



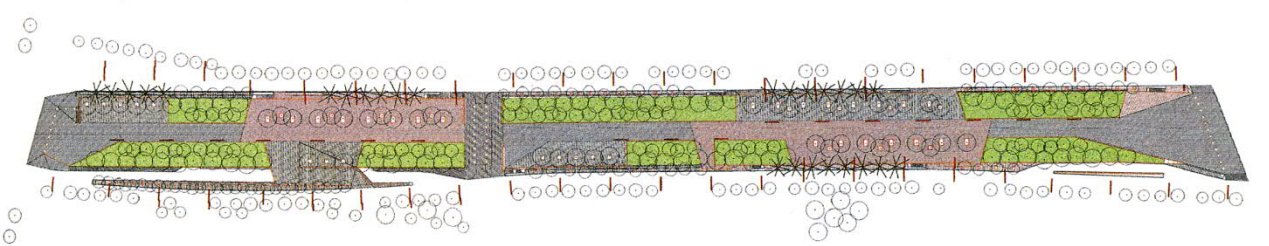
Iluminación.
Lighting.



Vegetación.
Vegetation.

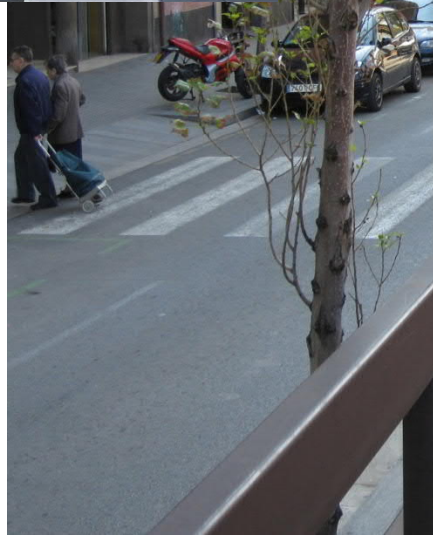


Fase I. Planta general.
Phase I. General plan.







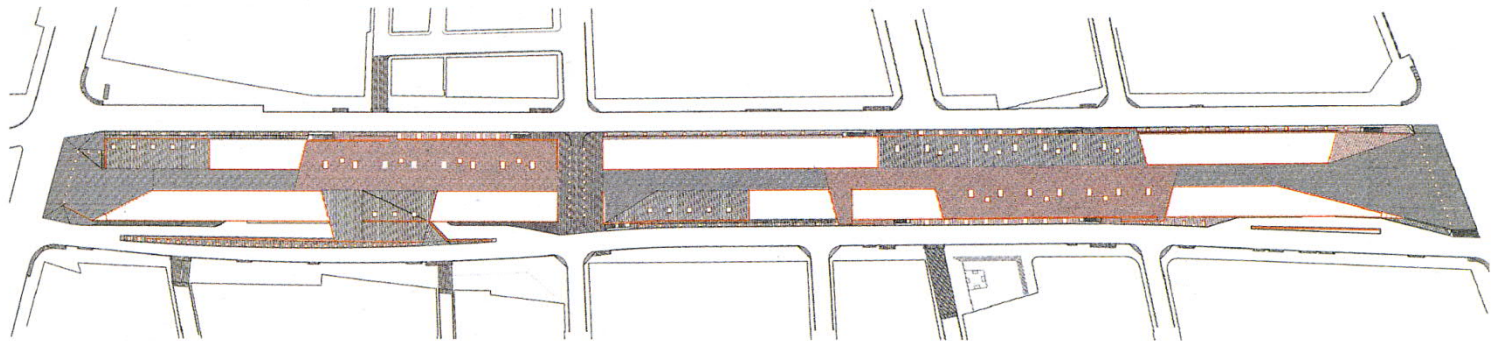








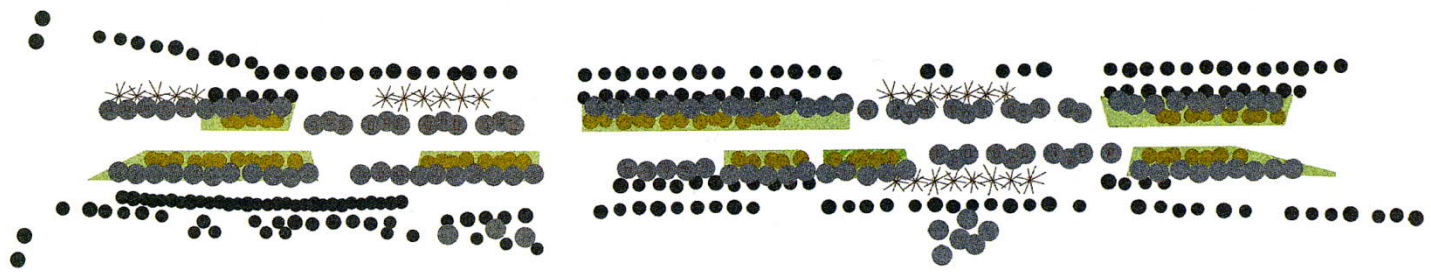
Pavimentación.
Paving.



Iluminación.
Lighting.



Vegetación.
Vegetation.





Parc Diagonal del Mar
EMBT Arquitectes Associats
2002





















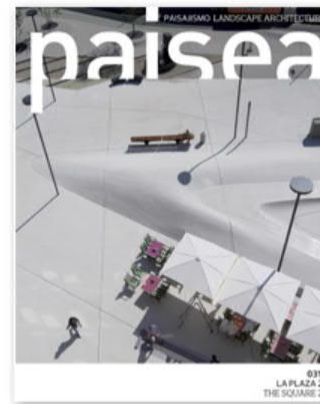
castellano | english

blog | staff | paisea | PS paisea

paisea

10 años de paisea, revista de paisajismo monográfica por temas.

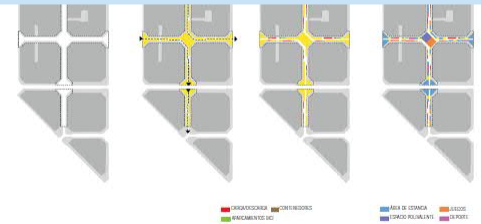
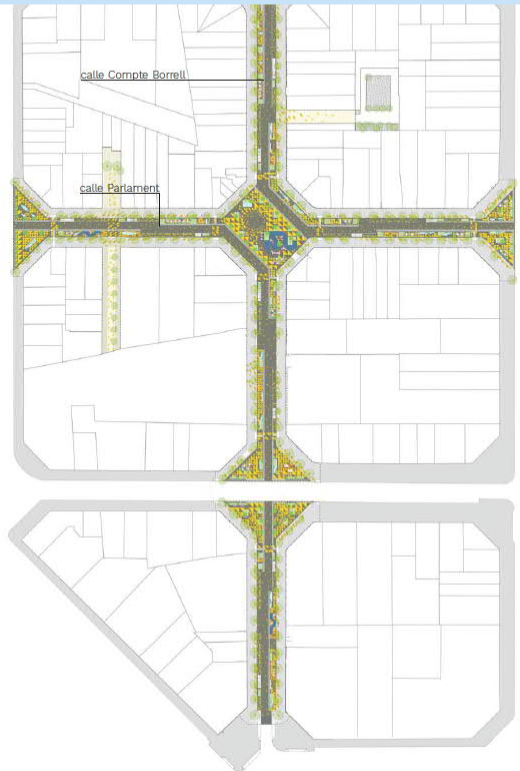
paisea Cada número tiene una serie de apartados fijos: proyectos realizados, sin realizar y añejos, concursos de paisajismo, proyectos de escuela, sección verde y otra más abierta culandscape. Junto a éstas una serie de artículos relativos al tema del número.



https://www.paisea.com/revista-paisea/

This file claims compliance with the PDF/A standard and has been opened read-only to prevent modification.

Enable Editing



ejes cívicos y una plaza en chaflán

El proyecto parte del desarrollo de un intenso trabajo prospectivo, que más allá de los documentos de diagnósticos oficiales, profundiza en el análisis sensible y a escala humana de barrio complementado con un detallado levantamiento de las actividades en plantas bajas, comercios locales e inventariado de elementos característicos.

Del cruce de datos entre esta base analítica con las conclusiones consensuadas en el proceso participativo y los criterios marco del Programa Superilles se pre-configura el plano de usos que nutre la propuesta de ordenación del nuevo paisaje urbano.

El proyecto recupera el espacio en calzada limitando el acceso a los coches a través de un único carril de coexistencia con bici y peatón. Este ve interrumpida su continuidad en el cruce de ejes al crearse una nueva plaza central presidida por las fachadas en chaflán y las alineaciones arboladas. En esta nueva ordenación el nuevo programa de usos conquista la calzada en estrecha sintonía con las actividades en plantas bajas y el ritmo pautado por los árboles.

Dadas las propiedades de reversibilidad y adaptabilidad requeridas, el proyecto se concibe a modo de superposición de capas que, sin modificar la urbanización existente, reprograma usos, reordena la movilidad y dibuja un nuevo paisaje.

La propuesta define los elementos de la actuación y establece la estrategia de implantación estructurada por capas a tres niveles. Como elemento referencial para la ordenación del paisaje, se establece una malla base reticular que define el módulo y favorece la escalabilidad y extensión de la actuación.

Search tools

Export PDF

Adobe Export PDF

Convert PDF Files to Word or Excel Online

Select PDF File

PS#14 CASTELLANO.pdf

Convert to

Microsoft Word (*.docx)

Document Language: English (U.S.)

Convert, edit and e-sign PDF forms & agreements

Free 7-Day Trial

This file claims compliance with the PDF/A standard and has been opened read-only to prevent modification.

Enable Editing

Search tools

Export PDF

Adobe Export PDF

Convert PDF Files to Word or Excel Online

Select PDF File

PS#14 CASTELLANO.pdf x

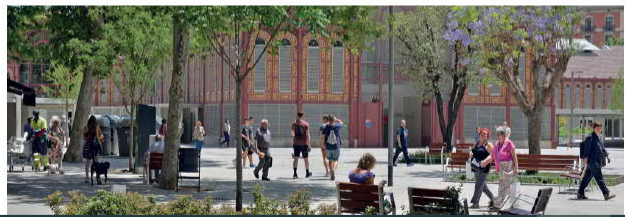
Convert to

Microsoft Word (*.docx)

Document Language: English (U.S.) Change

Convert, edit and e-sign PDF forms & agreements

Free 7-Day Trial



tipologías de intervención

actuaciones básicas

Tienen por objetivo el cambio funcional de las calles, centrándose básicamente en la jerarquización del tráfico por distintos métodos: señalizaciones verticales y horizontales, cambios de sentido de circulación, prohibiciones de paso según tipo de vehículos, racionalización de los aparcamientos y regularización de la distribución de mercancías.

actuaciones tácticas

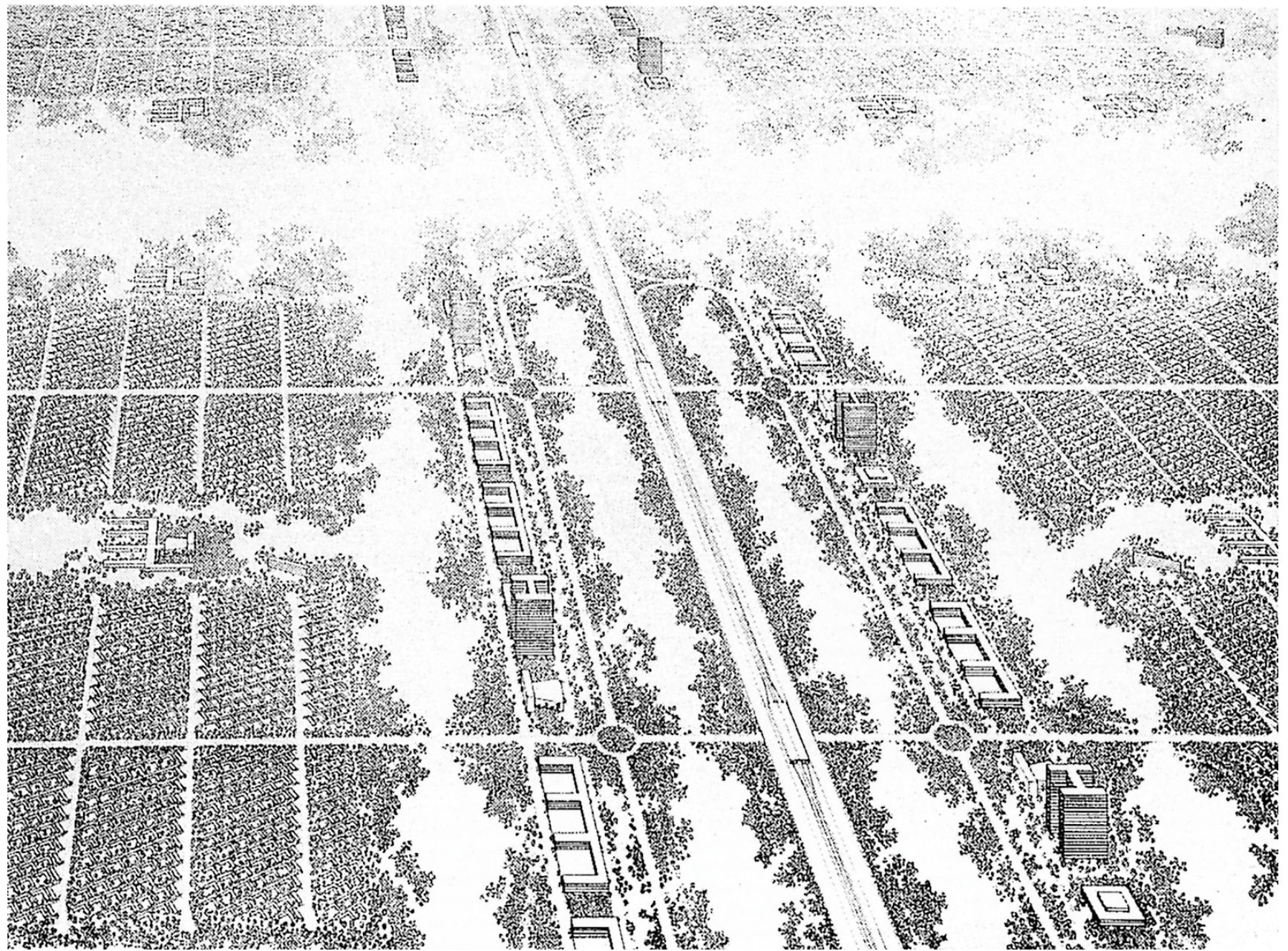
Son actuaciones de oportunidad: de bajo presupuesto, temporales, reversibles y flexibles, que sirven de muestra de aplicación del modelo. Las transformaciones tácticas adquieren un gran interés ya que consisten en actuaciones sutiles sobre las aceras y calzadas existentes (tales como medidas de gestión, incorporación de mobiliario o pintura) que tienen un gran potencial de transformación de los usos del espacio público sin necesidad de ejecutar grandes obras. Son, además, intervenciones económicas y de rápida ejecución, permitiendo iniciar las transformaciones como pruebas piloto que posteriormente son evaluadas para decidir sobre su permanencia, mejora o cancelación. Por tanto, las actuaciones tácticas permiten entender las transformaciones como un proceso de prueba y error para encontrar el consenso entre los distintos agentes implicados.

Su reversibilidad permite reducir las reticencias al cambio que siempre surgen. Además, la posibilidad de implantar experiencias temporales facilita que los posteriores debates y evaluaciones no se basen en opiniones o temores, sino que se fundamenten en vivencias. Por último, la naturaleza flexible de las actuaciones tácticas y el hecho de que una vez ejecutadas sean fácilmente modificables y mejorables, posibilita que la implicación y participación ciudadana en torno a los cambios pueda darse incluso con la prueba ya realizada. De hecho, con la ejecución de este tipo de medidas no se marca un punto final, sino que la ejecución significa el inicio de un proceso abierto a incorporar más opiniones, posibilitando que se llegue a un proyecto definitivo ampliamente consensuado.

actuaciones estructurantes

Son acciones de gran consenso y estables en el tiempo, que pueden implicar presupuestos más importantes y aplicación de modelos constatados. Se trata de proyectos de reurbanización del espacio público que conllevan las transformaciones y procesos de obras habituales. Aunque este tipo de actuaciones no son consideradas imprescindibles para alcanzar los objetivos del programa en una primera fase, podrán contemplarse si excepcionalmente se consideran necesarias. Debe tenerse en cuenta que, como consecuencia de la liberación de espacios actualmente ocupados por los vehículos, surgen nuevos espacios de estancia que deben ir urbanizándose con los niveles de calidad convenientes y en





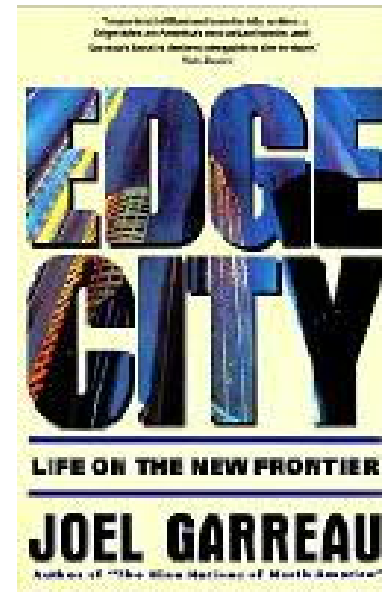
Ludwig Hilberseimer (1885-1967) : The New City 1944
Alfred Caldwell (1903-1998)

THE AMERICAN DREAM



URBAN SPRAWL







landscape urbanism

”... a move from both Modernist and New Urbanist models of ordering the city (both of which believe that formal models alone will remedy the problems of city) to more open-ended strategic models.”

- James Corner

suburbanism

”from *suburbia* and *urbanism* ... (2) the discipline of design practice, first inspired by suburban situations (as contexts), where the hierarchy traditionally promoted in urbanism between program and site is reversed. Instead, the site itself becomes the matter and horizon of design.

- Sébastien Marot

Thomas Sieverts

ZWISCHENSTADT

zwischen
Ort und Welt
Raum und Zeit
Stadt und Land



*»Die Zwischenstadt kann eine beliebige Vielfalt von Siedlungs- und Bauformen entwickeln, solange sie insgesamt in ihrem Erschließungsnetz lesbar und vor allem wie ein `Archipel` in das `Meer` einer zusammenhängend erlebbaren Landschaft eingebettet bleibt: **Die Landschaft muß zu dem eigentlichen Bindeelement der Zwischenstadt werden.**«*

Thomas Sieverts (1934-)

“We may assert that **landscaped form** as the fundamental material of a fragmentary urbanism is of greater consequence than the free-standing aestheticized object.”

Kenneth Frampton 1994

“The dystopia of the megalopolis is already an irreversible historical fact: it has long since installed a new way of life, not to say a new nature ... I would submit that instead we need to conceive of **a remedial landscape** that is capable of playing a critical and compensatory role in relation to the ongoing, destructive commodification of the man-made world.”

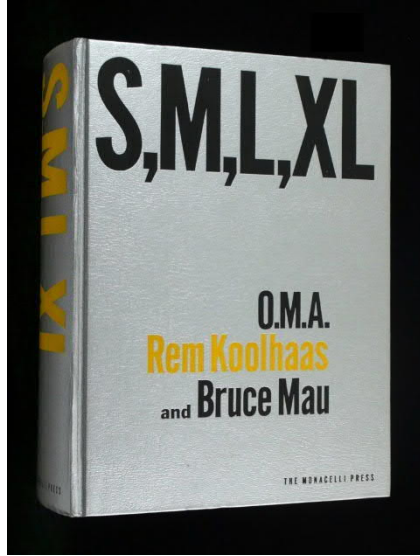
Kenneth Frampton: Toward an Urban Landscape, 1995

“Atlanta does not have the classical symptoms of the city; it is not dense; it is sparse, thin carpet of habitation, a kind of suprematist composition of little fields. Its strongest contextual givens are vegetal and infrastructural: forests and road. **Atlanta is not a city; it is a landscape.**”

Rem Koolhaas and Bruce Mau: S, M, L, XL. 1999

**OMA – Office for Metropolitan Architecture
Kiinan television pääkonttori
Peking 2008**





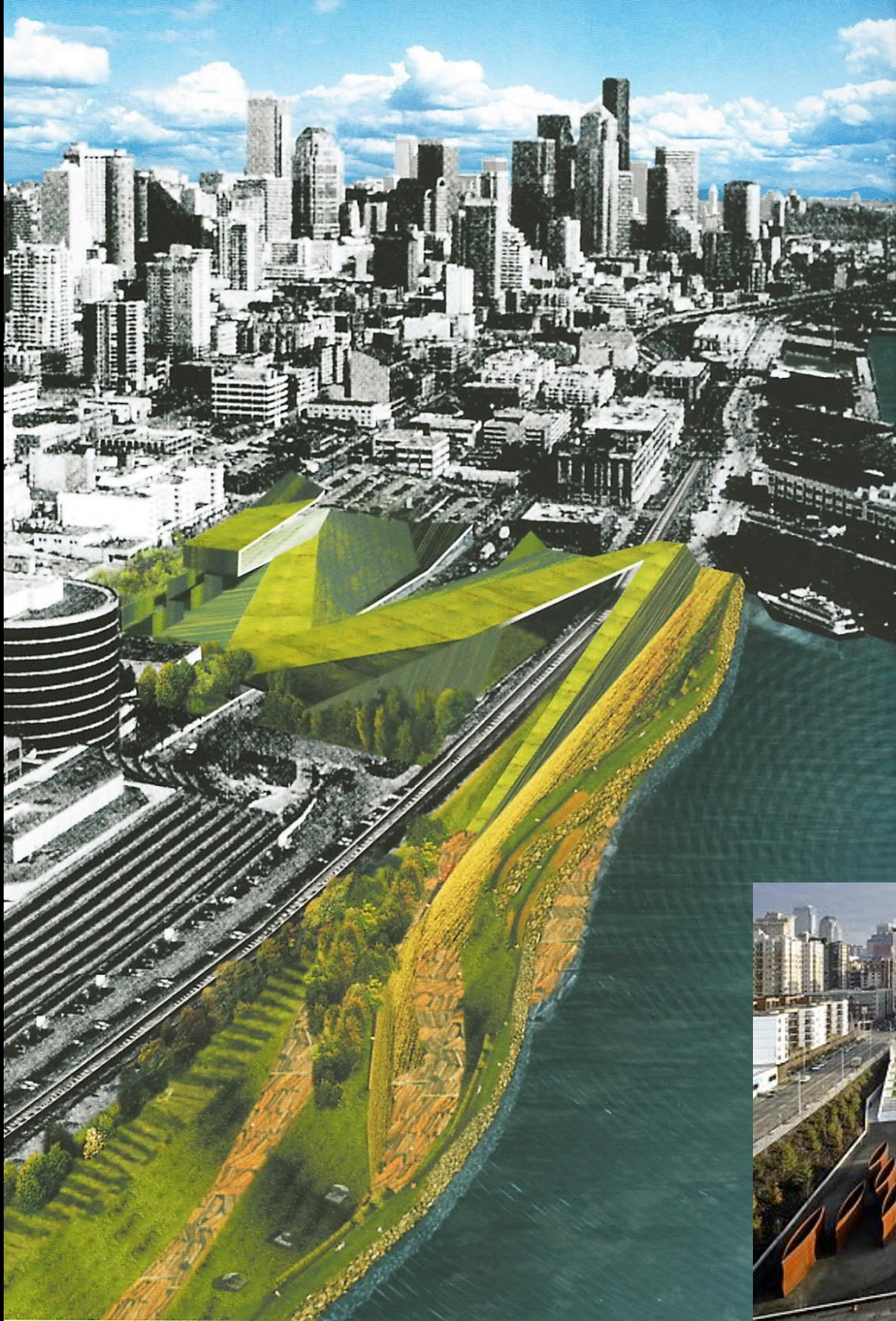
‘If there is to be a ”new urbanism”, it will not be based on the twin fantasies of order and omnipotence; it will be the staging of uncertainty; it will no longer be concerned with the arrangement of more or less permanent objects, but with the irrigation of territories with potential; it will no longer aim for stable configurations, but for the creation of enabling fields that accommodate processes that refuse to be crystallized into definitive form; it will no longer be about meticulous definition, the imposition of limits, but about expanding notions, denying boundaries; not about separating and identifying entities, but about discovering unnameable hybrids; it will no longer be obsessed with the city, but with the manipulation of infrastructure for endless intensifications and diversifications, shortcuts and redistributions – the reinvention of psychological space.’

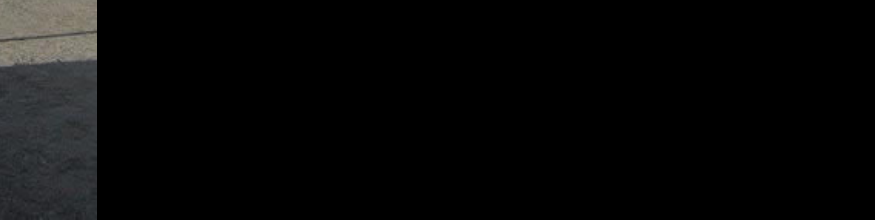
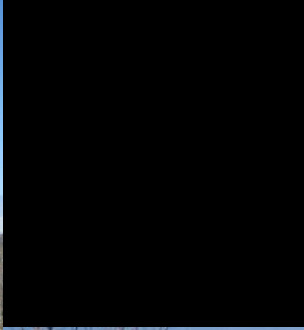
Rem Koolhaas and Bruce Mau: S, M, L, XL. 1999

Olympic Sculpture Park

Seattle USA, 2001-06

Weiss / Manfredi Architects







SAM

