

# Statistical Mechanics E0415

2022, summary 4

Ising model, 2nd order phase transitions

# Take home 3

This lecture looks at the classical measures of correlations and their decay. We shall get back to these topics later on, but you should read through the chapter and think of conditional probabilities. Read first the Chapter and check then the lecture slides again.

The take home consists of answering to the following questions:

Give an example of X and Y that are correlated but there is no causal relation (X because of Y or X because of Y happened before) between them.

Take a (time) series of the binary kind 0110110011000111.... (or subtract  $-1/2$  from all the values so that the average might become zero). When would this be correlated?

Take instead a series like this: ...000011111111(...))111000.... This is clearly not a random one. Now start tossing a coin (0/1) and replace according to each toss one of the values with the new one. Does this correspond to the Onsager hypothesis and why? If the coin is biased, does the process relate to linear response?

As a final remark, try playing the game found at <https://www.expunctis.com/2019/03/07/Not-so-random.html>. How random were you able to be?

Give an example of X and Y that are correlated but there is no causal relation:

""On example of correlation without causality the consumption of mosquito poisons and the number of drowned people per month. Both of these have their maximum at summer months (at least in Finland), but they do not follow from each other, e.g. the mosquito poison does not make people drown more or vice versa.""

Take a (time) series of the binary kind...:

"The binary series is correlated in case we can find a rule which tells what we would expect to find at distance r from our current position in the chain..."

# Take...

Take instead a series like this...:

“Taking a non random binary sequence and starting to change values according to random process (coin flip) corresponds to Onsager’s hypothesis in a way that if we consider the initial state, where average is higher than 0.5, as a fluctuation caused by external force, the theory tells us that the evolution of the system should essentially go by diffusion equation as with some macroscopic system...”

As a final remark, try playing the game...:

“For the online game: I was not able to be random at all after around 80 iterations.”

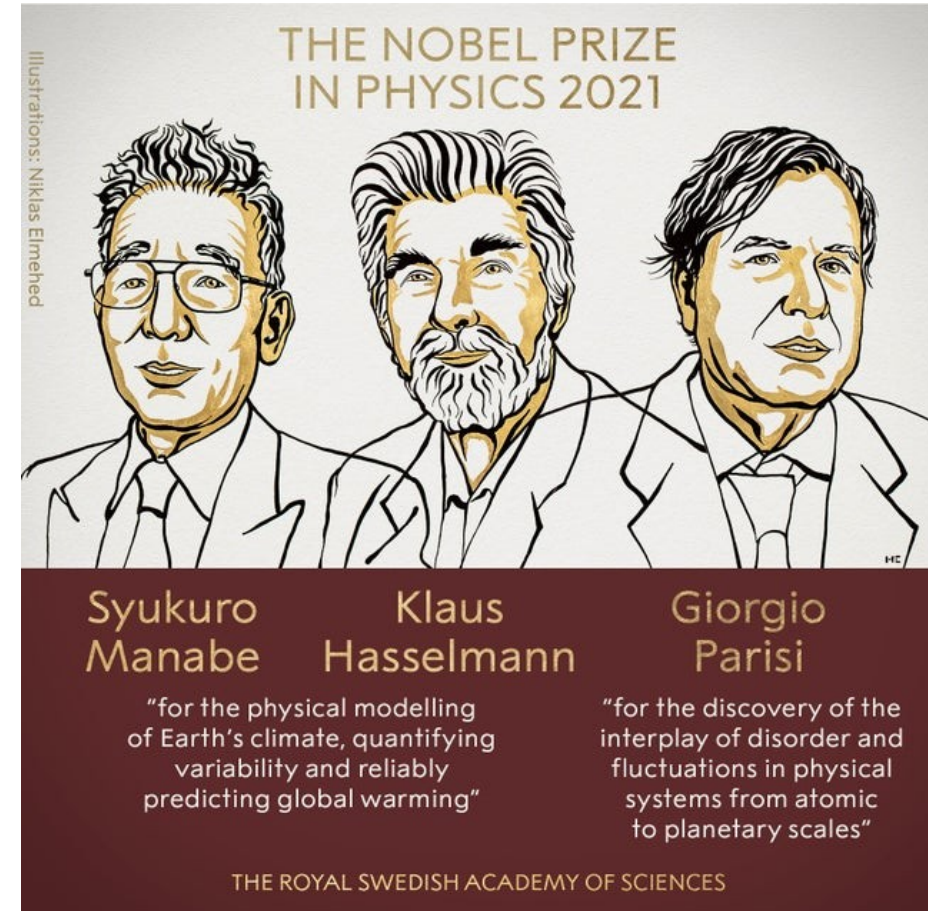
# Step aside: Nobel Prize Physics 2021

Today, we celebrate the recent news of the Nobel – to statistical mechanics: Giorgio Parisi.

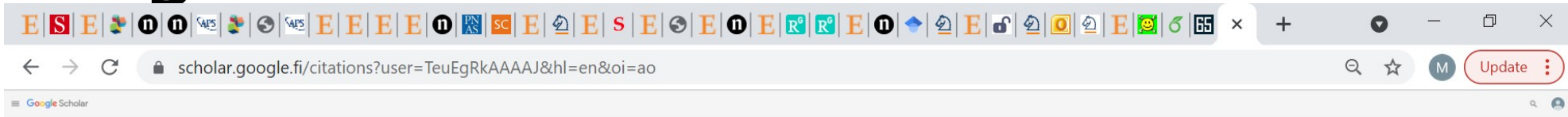
So what did Zio Giorgio (nickname at La Sapienza in Rome) get his prize for?

The answer is, for many things, for developing and applying theoretical physics and (really) high performance computing to various problems.

In detail?



# Google Scholar and the Nobel Prize



#2:

[Spin glass theory and beyond: An Introduction to the Replica Method and Its Applications](#)

#3:

[Dynamic scaling of growing interfaces](#)

#5:

[Simulated tempering: a new Monte Carlo scheme](#)

#6:

[Interaction ruling animal collective behavior depends on topological rather than metric distance: Evidence from a field study](#)

#9:

[Stochastic resonance in climatic change](#)

#11:

[Random magnetic fields, supersymmetry, and negative dimensions](#)

**Giorgio Parisi**  
Professor of Theoretical Physics, Rome I University "La Sapienza"  
Verified email at roma1.infn.it  
Theoretical Physics statistical mechanics glasses mathematical physics QCD

TITLE	CITED BY	YEAR
Asymptotic freedom in parton language G Parisi, G Parisi Nuclear Physics B 126 (2), 298-318	9360	1977
Spin glass theory and beyond: An Introduction to the Replica Method and Its Applications M Mézard, G Parisi, M Virasoro World Scientific Publishing Company	6112	1987
Dynamic scaling of growing interfaces M Kardar, G Parisi, YC Zhang Physical Review Letters 63 (9), 480-482	5884	1986
Planar diagrams E Brzin, C Feynman, G Parisi, M Zuber The Large N Expansion in Quantum Field Theory And Statistical Physics: From ...	2068	1993
Simulated tempering: a new Monte Carlo scheme E Marinari, G Parisi 1992 European Lett. 19: 451-19 (5), 451	2058	1992
Interaction ruling animal collective behavior depends on topological rather than metric distance: Evidence from a field study M Ballerini, N Cabibbo, R Candelier, S Castiglioni, S Cesaroni, I Ciuchetti, ... Proceedings of the national academy of sciences 105 (4), 1232-1237	1786	2008
Statistical field theory G Parisi Frontiers in Physics, Addison-Wesley	1665	1988
Perturbation theory without gauge fixing G Parisi, YS Wu Sci. Ser. 26 (4), 483-496	1409	1981
Stochastic resonance in climatic change R Benzi, G Parisi, A Sutera, A Vulpiani Tellus 34 (1), 10-16	1400	1982
On the similarity structure of fully developed turbulence U Frisch, G Parisi Turbulence and predictability in geophysical fluid dynamics and climate dynamics	1386	1984
Infinite number of order parameters for spin glasses G Parisi Physical Review Letters 43 (23), 1734	1243	1979
Random magnetic fields, supersymmetry, and negative dimensions G Parisi, M Sourlas Physical Review Letters 43 (11), 744	1138	1979
Analytic and algorithmic solution of random satisfiability problems M Mézard, G Parisi, R Zecchina Science 297 (5562), 812	1089	2002
On the multifractal nature of fully developed turbulence and chaotic systems R Benzi, G Parisi, G Proust, A Sulem Journal of Physics A, Mathematical and General 17, 3521	967	1984
Glueball masses and string tension in lattice QCD M Ambrose, F Colomeri, G Fiorini, F Forni, MP Lombardo, ... Physics Letters B 192 (1-2), 103-109	905	1987
The order parameter for spin glasses: a function on the interval 0-1 G Parisi Journal of Physics A, Mathematical and General 13 (2), 1031	908	1979
Bounds on the fermions and Higgs boson masses in grand unified theories N Cabibbo, L Maiani, G Parisi, R Paloutzian Nuclear Physics B 158 (2-3), 295-300	914	1979
Order parameter for spin glasses G Parisi Physical Review Letters 50 (24), 1566	901	1983
A sequence of approximated solutions to the SK model for spin glasses G Parisi Journal of Physics A, Mathematical and General 13 (4), L115	855	1979
The Bethe lattice spin glass revisited M Mézard, G Parisi The European Physical Journal B-Condensed Matter and Complex Systems 20 (2, ...	829	2001

Cited by



Public access

0 articles available

Co authors

- Ergo Merino
- Marc Mezard
- Federico Ricci-Teresagni
- Juan J. Ruiz-Lorenzo
- Vitor Mero-Muñoz
- Silvia Franz
- Luis Antonio Fernandez
- M. Virasoro
- Irene Giardinà
- Francesco Zamponi
- Andrea Cavagna
- Alfonso Torricelli
- Gaetano Salina
- Maria Paola Lombardo
- Yu-Zheng Zhang
- Pier Stanislao Pavan
- Andrea Macrono
- David Vitanes
- Roberto Benzi
- Angelo Vulpiani

# Example, the Kardar-Parisi-Zhang equation

An equation for a "field"  $h$ , with a linear, a non-linear, and a noise term.

$$\frac{\partial h(x,t)}{\partial t} = \lambda \left( \frac{\partial h(x,t)}{\partial x} \right)^2 + \nu \frac{\partial^2 h(x,t)}{\partial x^2} + \sqrt{D} \eta(x,t)$$

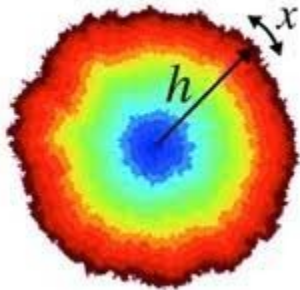
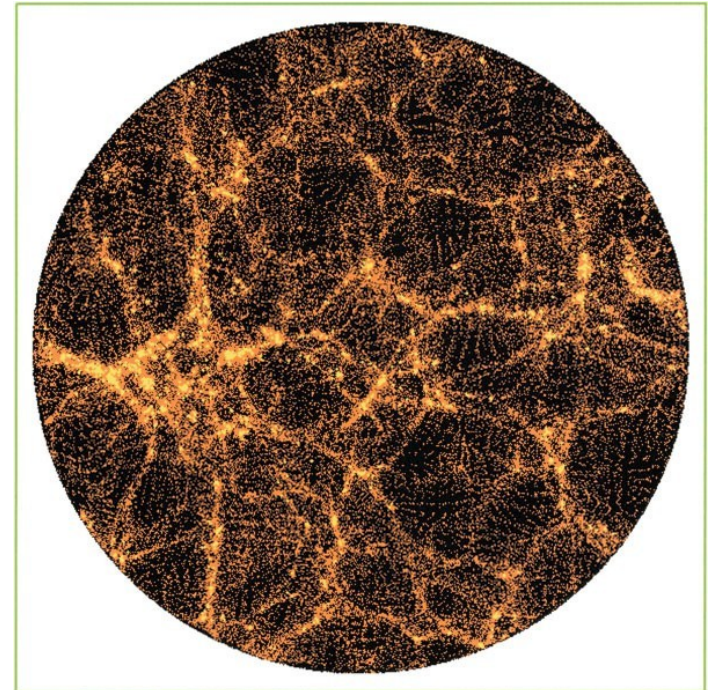


Image from K. A. Takeuchi et al. Sci. Rep. 1, 34 (2011)

Growing  
interfaces, density  
fluctuations of the  
universe...  
(Burgers' equation  
of fluid turbulence)





# ABC of phase transitions

Today's main topics:

- The paradigmatic statistical mechanics model: the Ising model
- How to solve statistical mechanics on the computer – yet another connection to stochastics (of/or Markov chains)
- Coarse-grain the Ising: simplest Ginzburg-Landau theory, the phase transition in GL.

Material: Sethna, Chaikin-Lubensky, Principles of Condensed Matter Physics, Ch 4 (start) and Ch 10 (early part).

# Meet the Ising model

- Lattice model, with Hamiltonian

$$\mathcal{H} = - \sum_{\langle ij \rangle} J s_i s_j - H \sum_i s_i.$$

- These details dictate the physics: J (coupling), H (external field), sum over (NN) interactions, geometry.
- Sign of J: (anti)ferromagnetic. Trees, 1D (solvable), 2D (barely solvable), 3D (not solvable).
- Add disorder (RF [H] (GP...), RB (J), SG (J)), make J long-ranged, AF in a triangular lattice (frustration)....

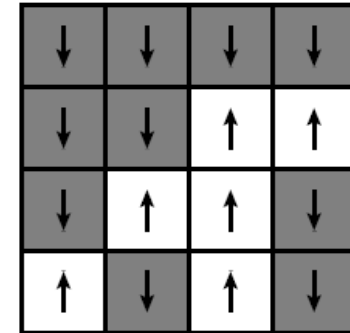


Fig. 8.1 The 2D square-lattice Ising model. It is traditional to denote the values  $s_i = \pm 1$  as up and down, or as two different colors.

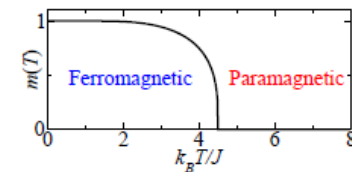


Fig. 8.2 Ising magnetization. The magnetization  $m(T)$  per spin for the 3D cubic lattice Ising model. At low temperatures there is a net magnetization, which vanishes at temperatures  $T > T_c \approx 4.5$ .



# Ising model: (some) uses

Magnetism (parameters from microscopic detail!).

Binary alloys: understand the energy from the atomistic configuration (NN, NNN...).

Liquid-gas transition: what happens in the phase diagram close to the critical point (liquid-gas).

<i>B</i>	<i>B</i>	<i>B</i>	<i>B</i>
<i>B</i>	<i>B</i>	<i>A</i>	<i>A</i>
<i>B</i>	<i>A</i>	<i>A</i>	<i>B</i>
<i>A</i>	<i>B</i>	<i>A</i>	<i>B</i>

Fig. 8.3 The Ising model as a binary alloy. Atoms in crystals naturally sit on a lattice. The atoms in alloys are made up of different elements (here, types *A* and *B*) which can arrange in many configurations on the lattice.

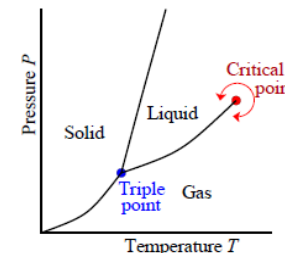


Fig. 8.4  $P$ - $T$  phase diagram for a typical material. The solid-liquid phase boundary corresponds to a change in symmetry, and cannot end. The liquid-gas phase boundary typically does end; one can go continuously from the liquid phase to the gas phase by increasing the pressure above  $P_c$ , increasing the temperature above  $T_c$ , and then lowering the pressure again.

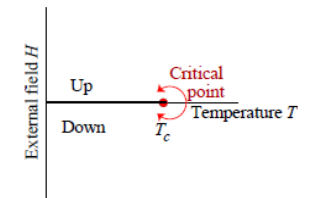


Fig. 8.5  $H$ - $T$  phase diagram for the Ising model. Below the critical temperature  $T_c$ , there is an up-spin and a down-spin 'phase' separated by a jump in magnetization at  $H = 0$ . Above  $T_c$  the behavior is smooth as a function of  $H$ .

# How to solve the Ising model?

Emulate the thermal evolution on a computer: Heat Bath algorithm.

Pick a spin (at random).

Compute the cost in energy for having it up/down  $\Delta E_{\text{up/down}}$ .

Pick the direction at random using the right Boltzmann weights.

(This means we do a Markov Chain over the spin states).

Advanced numerical methods:

Cluster algorithms...

Parallel tempering...

Ground-state methods for disordered systems (low temperatures: unique ground state for each system)...

Special computers (!).

# Markov chains/fields (in general)

Properties of (memoryless) processes for the evolution of the occupation probabilities,

Require a steady-state, and conservation of probability.

Ergodic (finite convergence time) chains have a single steady-state (Frobenius-Perron theorem).

Detailed balance: convergence assured.

- **Time evolution.** The probability vector at step  $n + 1$  is

$$\rho_{\beta}(n + 1) = \sum_{\alpha} P_{\beta\alpha} \rho_{\alpha}(n), \quad \rho(n + 1) = P \cdot \rho(n). \quad (8.6)$$

- **Positivity.** The matrix elements are probabilities, so

$$0 \leq P_{\beta\alpha} \leq 1. \quad (8.7)$$

- **Conservation of probability.** The state  $\alpha$  must go somewhere, so

$$\sum_{\beta} P_{\beta\alpha} = 1. \quad (8.8)$$

- **Not symmetric!** Typically  $P_{\beta\alpha} \neq P_{\alpha\beta}$ .

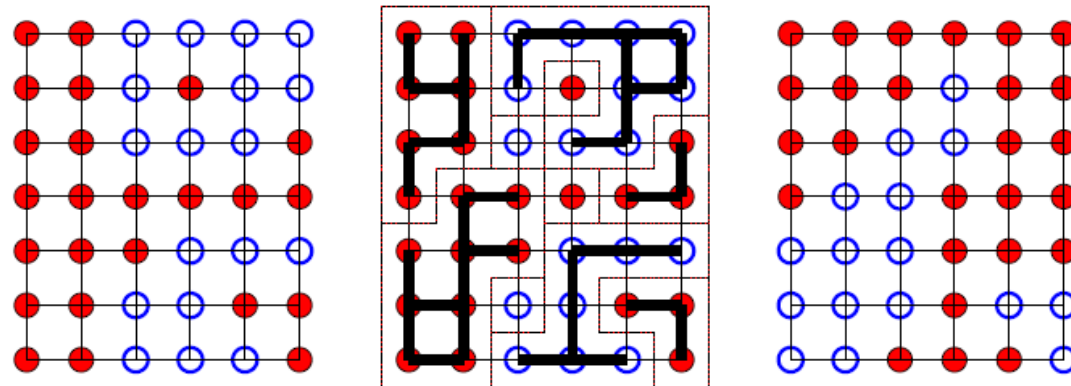
$$P_{\alpha\beta} \rho_{\beta}^* = P_{\beta\alpha} \rho_{\alpha}^*$$

# Example #1 of cluster algorithms

- Swendsen and Wang 1989 [PRL 56 (87), 86]:  
update clusters  
not single spins.
- Does this give the  
correct  
thermodynamics?

Beginning with an arbitrary configuration  $s_i$ , one SW cluster update cycle is:

1. Inspect all nn-states  $s_i, s_j$ . If  $s_i = s_j$ , create a bond between sites  $i, j$  with probability  $p = 1 - \exp(-2\beta)$  (otherwise no bond).
2. Construct clusters = sets of points connected by bonds.
3. Set each cluster to a *random* value  $\pm 1$ .



Thx to K. Rummukainen, HY

# Check it out

Showing that the SW algorithm exhibits detailed balance (between A and B) follows essentially from the fact that the intermediate "C" after the flip is arbitrary and compatible with both.

Is this a valid update? It satisfies

a) ergodicity (obvious)

b) detailed balance:  $\frac{P(A \mapsto B)}{P(B \mapsto A)} = \exp -\beta(E_B - E_A)$ ?

Proof: consider  $A \mapsto C \mapsto B$ , where  $C$  is some bond configuration compatible with both  $A$  and  $B$ . Since the clusters in  $C$  are independent,  $P(C \mapsto A) = P(C \mapsto B) = 1/2^{N_c}$ .

Now,

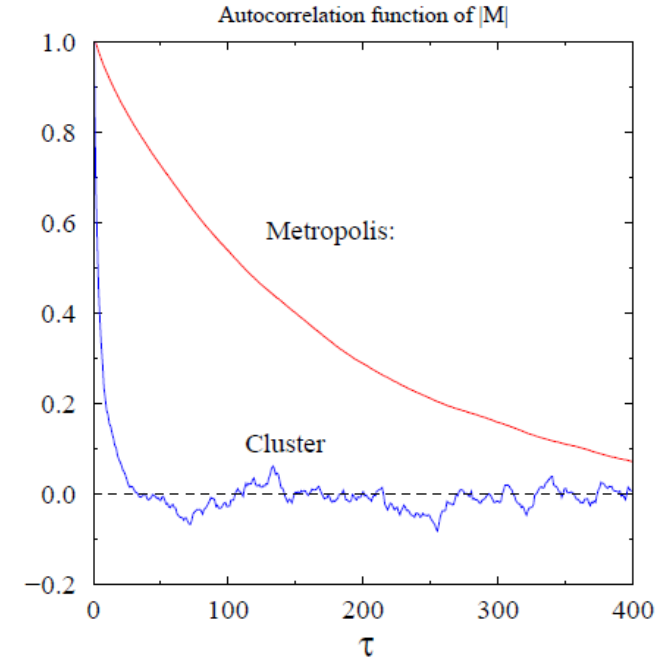
$$\frac{P(A \mapsto C)}{P(B \mapsto C)} = \frac{p^b (1-p)^{d_A}}{p^b (1-p)^{d_B}} = \exp[-\beta(E_B - E_A)]$$

where  $d_{A,B}$  are the numbers of **similar** nn-states which are **not** connected by a bond. The last step comes from  $E_A = \text{dim} \times V - 2(b + d_A)$ . Thus  $A \mapsto C \mapsto B$  and  $B \mapsto C \mapsto A$  satisfy detailed balance for arbitrary  $C$ , and the total transition probabilities  $A \mapsto B$ ,  $B \mapsto A$  must do it also.

# Wolff cluster algorithm (PRL 62 (89), 361)

Principle: do the cluster decomposition as in S-W, but invert ('flip') only one randomly chosen cluster! In practice:

1. Choose random site  $i$ .
  2. Study neighbouring sites  $j$ . If  $s_j = s_i$ , join site  $j$  to cluster with probability  $p = 1 - \exp(-2\beta)$ .
  3. Repeat step 2 for site  $j$ , if it was joined to the cluster. Keep on doing this as long as the cluster grows.
  4. When the cluster is finished, invert the spins which belong to it.
- Usually slightly more effective than S-W (the average size of the clusters is larger. Why?).
  - The minimum cluster size = 1, maximum = volume.
  - Nicely recursive.
  - Satisfies detailed balance.



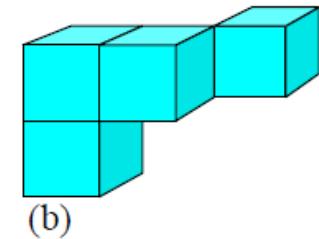
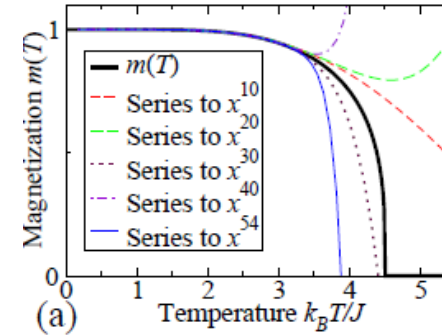
Autocorrelation function

$$C(t) \equiv \frac{\frac{1}{N-t} \sum_i O_i O_{i+t}}{\langle O^2 \rangle} \propto e^{-t/\tau}$$

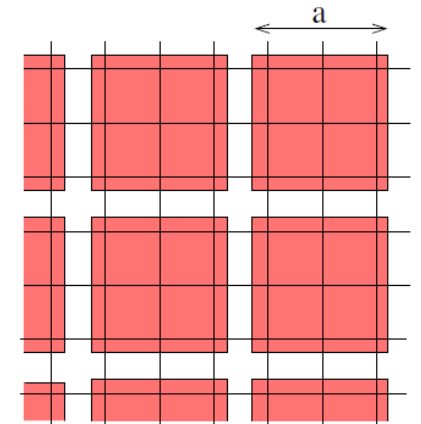
# Order parameters & Ginzburg-Landau

Inside a phase, an OP varies slowly but how do we detect the phase changes? (Example: magnetization for the Ising model in the FM phase).

GL: coarse-grain the system into patches of “large” size though smaller than the correlation length. Look, at what the FE looks like (and find the right normalization or partition function to get the FE right).



$$m(\mathbf{x}) = \frac{1}{N'} \sum_i s_i$$





# What is GL theory?

Z sum over all configurations  $m$ , thus a *path integral*.

Conditions on the FE: locality (in  $m$ ), symmetries (rotation, translation: original lattice),  $Z_2$ -symmetry (spin flips, we do now the Ising model), analyticity

Result (H breaks the parity symmetry, “-Hm”) reads then:

$$Z = \int \mathcal{D}m(\mathbf{x}) e^{-\beta F[m(\mathbf{x})]}$$

$$p[m(\mathbf{x})] = \frac{e^{-\beta F[m(\mathbf{x})]}}{Z}$$

$$F[m(\mathbf{x})] = \int d^d x \left[ \frac{1}{2} \alpha_2(T) m^2 + \frac{1}{4} \alpha_4(T) m^4 + \frac{1}{2} \gamma(T) (\nabla m)^2 + \dots \right]$$

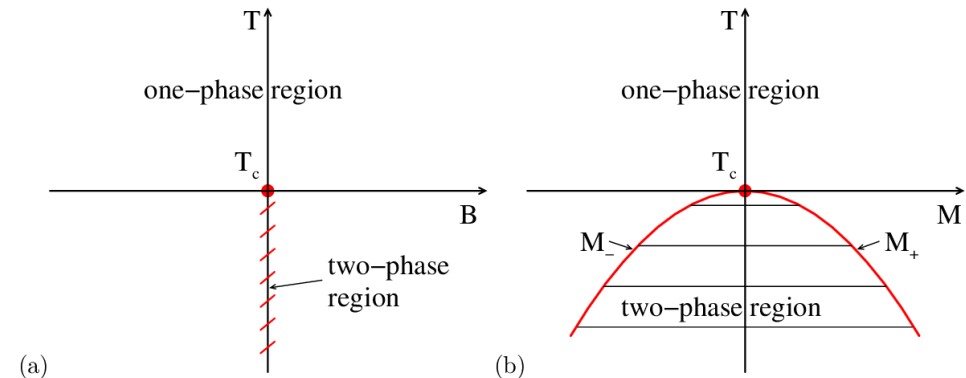
# Consequences:

Mean-field solution ( $m$  constant): a 2<sup>nd</sup> order phase transition (continuous) related  $\alpha_2$  and the critical temperature.  $m(T,H)$  (B in the figure).

Similar arguments are used (applying the GL-theory) to superconductivity and to liquid crystals (nematic-isotropic transition, where different symmetry gives an extra  $\alpha_3$  term).

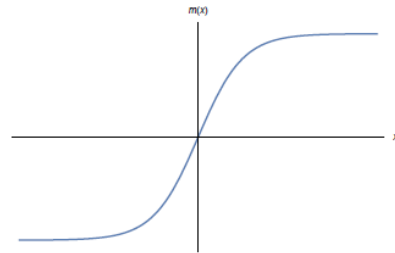
$$\alpha_2(T) \sim (T - T_c)$$

$$\alpha_4(T) \sim \frac{1}{3}T$$



# Application of GL: domain wall

In the ordered phase go from one “domain” to another: Domain Wall. GL gives the energy and shape.



$$\frac{\delta F}{\delta m(\mathbf{x})} = \alpha_2 m(\mathbf{x}) + \alpha_4 m^3(\mathbf{x}) - \gamma \nabla^2 m(\mathbf{x})$$

$$\left. \frac{\delta F}{\delta m} \right|_{m(\mathbf{x})} = 0 \quad \Rightarrow \quad \gamma \nabla^2 m = \alpha_2 m + \alpha_4 m^3$$

$$\gamma \frac{d^2 m}{dx^2} = \alpha_2 m + \alpha_4 m^3$$

$$m = m_0 \tanh\left(\frac{x - X}{W}\right)$$

$$W = \sqrt{-\frac{2\gamma}{\alpha_2}}$$

Applications: disorder, roughening... Lower critical dimension for order to be present. Warning: KPZ round the cor

$$F_{\text{wall}} \sim L^{d-1} \sqrt{-\frac{\gamma \alpha_2^3}{\alpha_4^2}}$$

# What did we learn?

GL model: some “critical exponent” describing the behavior of quantities close to the critical temperature.

On general grounds, these are all not independent. Rescaling of time, space (correlation time, length), response to an external field is why.

How does one now compute the exponents?

“Renormalization group” is the answer (K. Wilson, Nobel).

# Homework

## 3.2 Damped oscillator (Sethna 10.3 p. 235) HOMEWORK (5 points)

Let us explore the fluctuating mass-on-a-spring. The coupling of the macroscopic motion to the internal degrees of freedom eventually damps any initial macroscopic oscillation; the remaining motions are microscopic thermal fluctuations. These fluctuations can be important, however, for nanomechanical and biological systems. In addition, the damped harmonic oscillator is a classic model for many atomic-scale physical processes, such as dielectric loss in insulators. Consider a damped, simple harmonic oscillator, forced with an external force  $f$ , obeying the equation of motion

$$\frac{d^2\theta}{dt^2} = -\omega_0^2\theta - \gamma\frac{d\theta}{dt} + \frac{f(t)}{m}. \quad (7)$$

(a) *Susceptibility.* Find the AC susceptibility  $\bar{\chi}(\omega)$  for the oscillator. Plot  $\chi'(\omega)$  and  $\chi''(\omega)$  for  $\omega_0 = m = 1$  and  $\gamma = 0.2, 2, 5$ . (Hint: Fourier transform the equation of motion, and solve for  $\theta$  in terms of  $f$ .)

(b) *Causality and critical damping.* Check, for positive damping  $\gamma$ , that your  $\chi(\omega)$  is causal ( $\chi(t) = 0$  for  $t < 0$ ), by examining the singularities in the complex  $\omega$  plane (Section 10.9 in Sethna). At what value of  $\gamma$  do the poles begin to sit on the imaginary axis? The system is overdamped, and the oscillations disappear, when the poles are on the imaginary axis.

(c) *Dissipation and susceptibility.* Given a forcing  $f(t) = A \cos(\omega t)$ , solve the equation and calculate  $\theta(t)$ . Calculate the average power dissipated by integrating your resulting formula for  $f d\theta/dt$ . Do your answers for the power and  $\chi''$  agree with the general formula for power dissipation, eqn 10.37 in Sethna ( $p(\omega) = \frac{\omega f_0^2}{2} \chi''(\omega)$ )?

(d) *Correlations and thermal equilibrium.* Use the fluctuation-dissipation theorem to calculate the correlation function  $\bar{C}(\omega)$  from  $\chi''(\omega)$  ( $\chi''(\omega) = \frac{\beta\omega}{2}\bar{C}(\omega)$ , see eqn 10.65 in Sethna p. 229), where

$$C(t - t') = \langle \theta(t)\theta(t') \rangle. \quad (8)$$

Find the equal-time correlation function  $C(0) = \langle \theta^2 \rangle$ , and show that it satisfies the equipartition theorem. (Hints: Our oscillator is in a potential well  $V(\theta) = \frac{1}{2}m\omega_0^2\theta^2$ . Write  $(\omega_0^2 - \omega^2)^2 + C^2\omega^2 = (\omega_0^2 - \omega^2 + iC\omega)(\omega_0^2 - \omega^2 - iC\omega)$  and do contour integration if you really, really like it. Or you can trust that the integral gives

$$\int_{-\infty}^{\infty} d\omega \frac{1}{\omega} \chi''(\omega) e^{-\omega t} \rightarrow \frac{\pi}{\omega_0^2 m}, \quad (9)$$

as  $t \rightarrow 0$ . Calculating these kinds of contour integrals is out of the scope of this course. )

# Take home

- Take home (Sethna Chapter 10 plus additional material Ginzburg-Landau theory: Chaikin-Lubensky, Principles of Condensed Matter Physics, Ch. 4.1-4.4 and Ch. 10.1 and 10.2.).

Read the chapter, and the parts of Ginzburg-Landau theory. Check also the cluster Monte Carlo algorithms (the web is full of lecture notes, and Wikipedia has a good article on the S-W algorithm): do you think you understand why they work?

Here we introduce the Ising model as the paradigm of statistical physics and phase transitions. The book discusses the model and how to study it by computational means. The CL-part tells how a "coarse-grained" theory is formed for the Ising model (and its variants and other systems; "phase-field model" is a key concept).

The random field Ising model (RFIM) comes when you introduce the random fields to each site. The RFIM has a phase diagram like the normal Ising except that random fields can destroy ferromagnetic order at any temperature if they are strong enough.

How would the random field affect a) a GL-theory (what is the free energy like?) and b) the physics of a domain wall?

Then check the following application of the model: <https://link.springer.com/article/10.1140/epjb/e2005-00307-0>

Read through the paper. How would you simulate the model - how do the random fields enter the picture? Put the model on a 2D lattice, with a fixed set of neighbors for each "opinion" for that purpose.

What kind of transitions would you expect in this system?

(For those interested please see <https://www.cfm.fr/work-with-us/#Our%20internships> for summer jobs)