



Aalto University

Teaching practice Opetusharjoittelu (5 cr) spring 2023

Jukka Välimäki, Heidy Tiits-Tikkanen, Linda Mäkinen

4.5.2023

Agenda and schedule for today

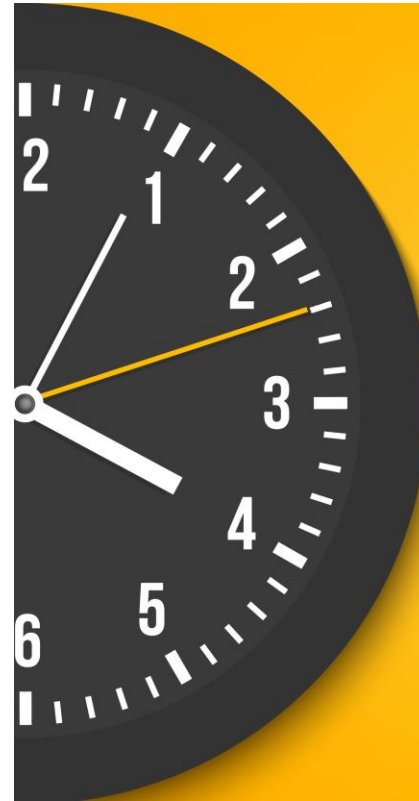
12:15

- **Agenda and practicalities**
- **Reflecting the spring and the course**

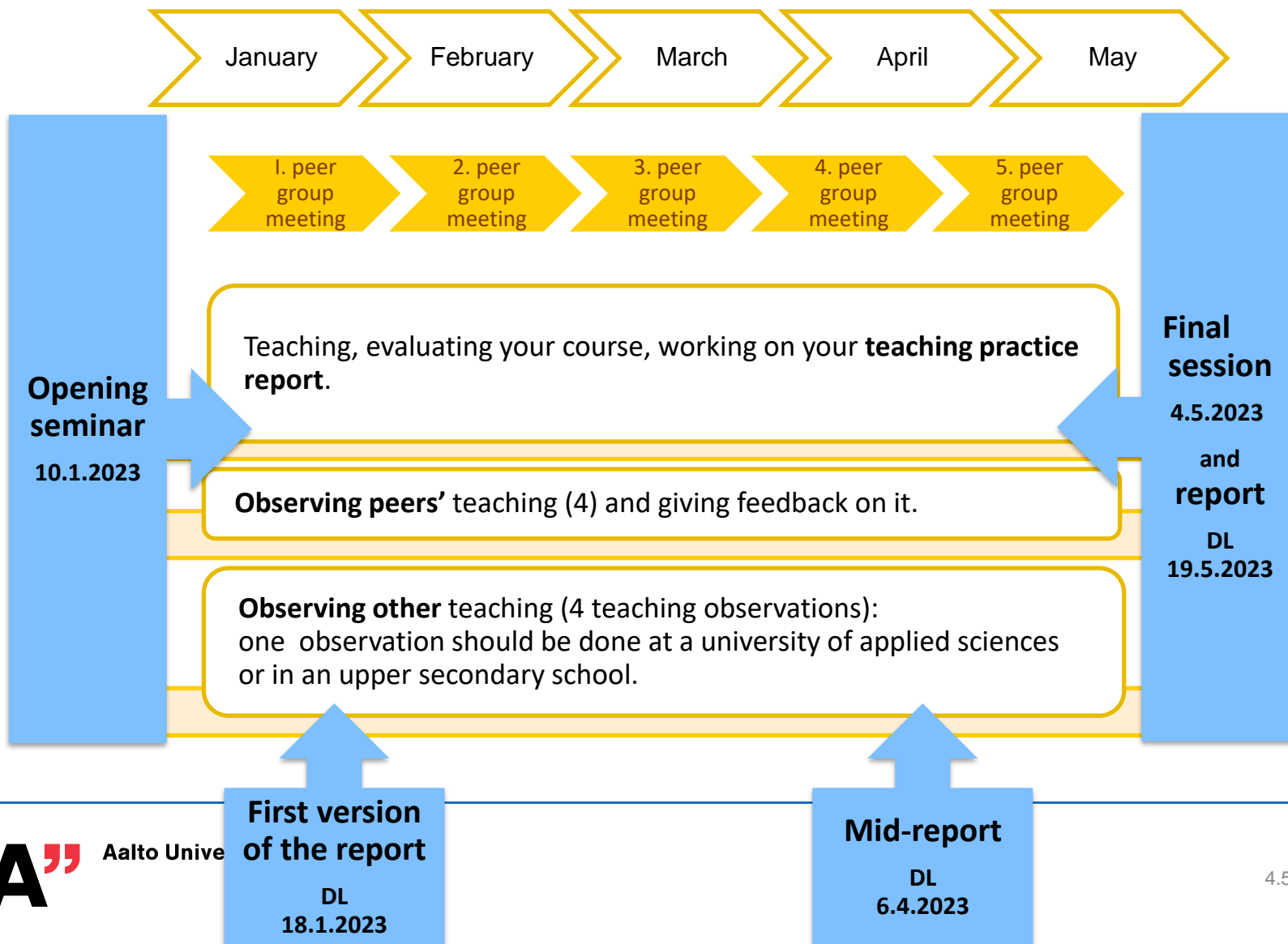
Break

- **Practical issues about the course & what comes next**
- **Time for feedback, thanks and bye!**

14:15



Teaching practice, timeline 2023



Discuss with your pair & document in Presemo: presemo.aalto.fi/2023

- **How did I feel about:**
 - being observed while teaching
 - observing the different aspects in others' teaching
 - giving feedback and receiving feedback
 - sharing experiences with my peer group
 - evaluating and developing my teaching

- **Did I reach my learning goal?**



PREPARE TO SHARE BRIEFLY YOUR MAIN THOUGHTS!

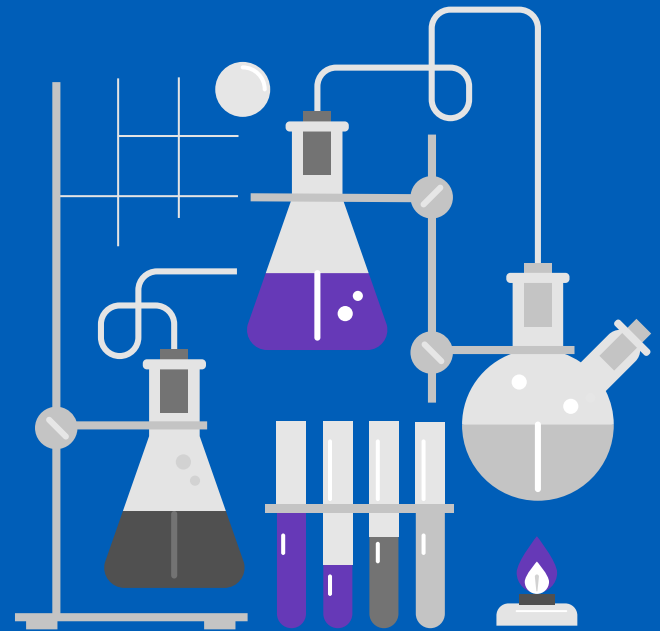
Break



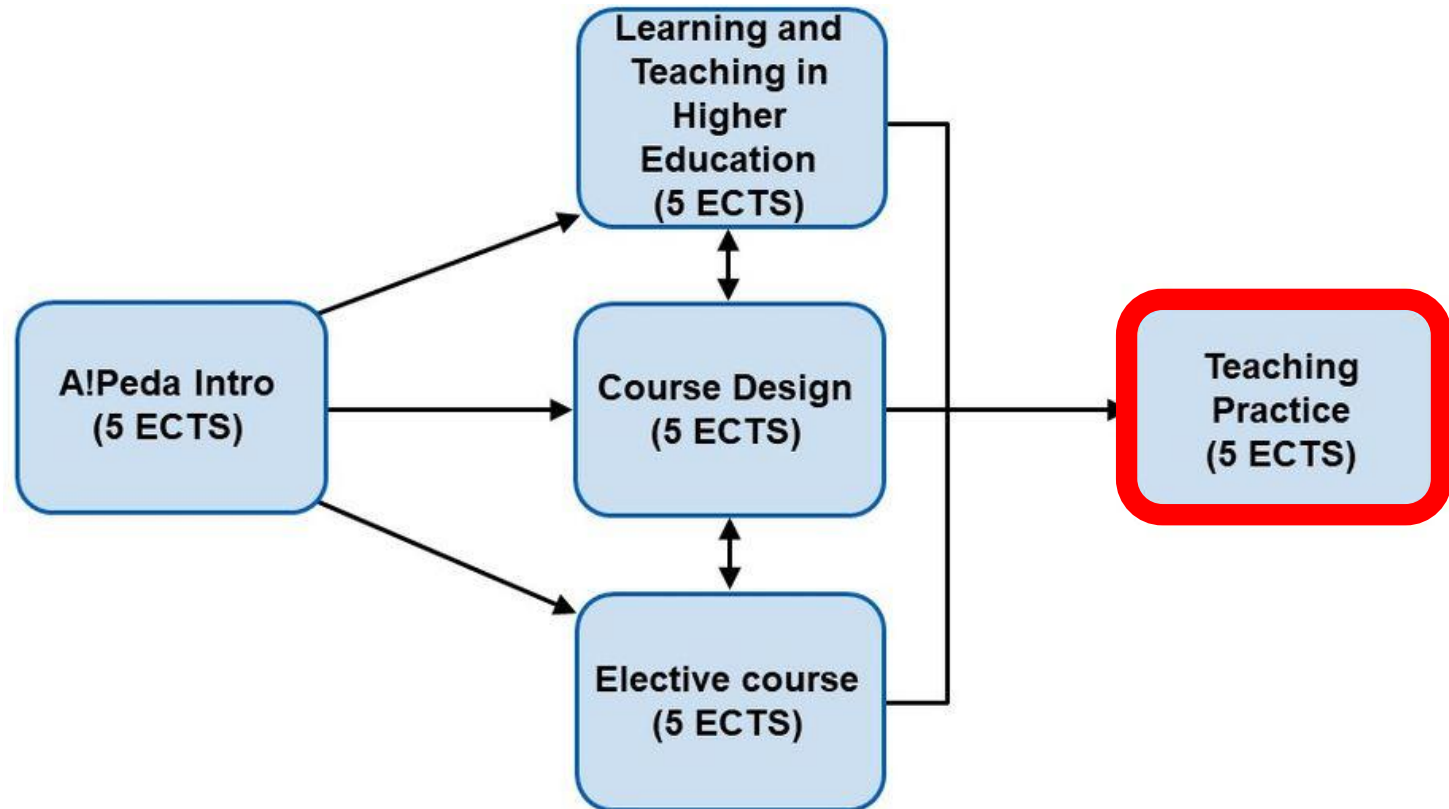
A?

Aalto University

Practical issues



The structure of pedagogical studies at Aalto (25 cr)



More information on the upcoming courses, see aalto.fi (log in to see the whole content):
[Aalto University pedagogical training for teaching faculty | Aalto University](#)

Options to continue pedagogical studies outside Aalto (to obtain 60 cr)

- HAMK; Häme University of Applied Sciences
<https://www.hamk.fi/professional-teacher/international-professional-teacher-education/?lang=en>
- Haaga-Helia University of Applied Sciences (in Helsinki)
<https://www.haaga-helia.fi/en/application-vocational-teacher-education>
- JAMK, Jyväskylä University of Applied Sciences
<https://www.jamk.fi/en/apply-to-jamk/professional-teacher-education>

These are in national level general application system: [Studyinfo \(opintopolku.fi\)](https://opintopolku.fi)

Studyinfo.fi is the official and up-to-date website with all the information about study programmes leading to a degree in Finland. The service can be used to find different study options and apply for the studies online.

If you have completed 25 cr of pedagogical training

Please do as follows when you would like to receive the certificate:

- Go to: <https://www.aalto.fi/en/services/pedagogical-training-main-page> to apply for the certificate of Aalto University pedagogical training.
- [Request for certificate of Aalto University Pedagogical Training \(25 cr\): Survey Powered by Webropol \(webropol-surveys.com\)](#)
- Make sure your courses are all registered in Sisu before filling the request.

Certificates are signed by the VP of education Petri Suomala twice a year and then mailed to you. To get your certificate in **June**, please send the request by **15th of May**.

Course feedback

<https://link.webropol.com/s/tp-s2023>





Thank you!