



Aalto University  
School of Arts, Design  
and Architecture

# MAR-E1004 Basics of GIS: Creating maps in ArcMap

*Jaakko Madetoja*

*9.10.2017*

# Learning goals

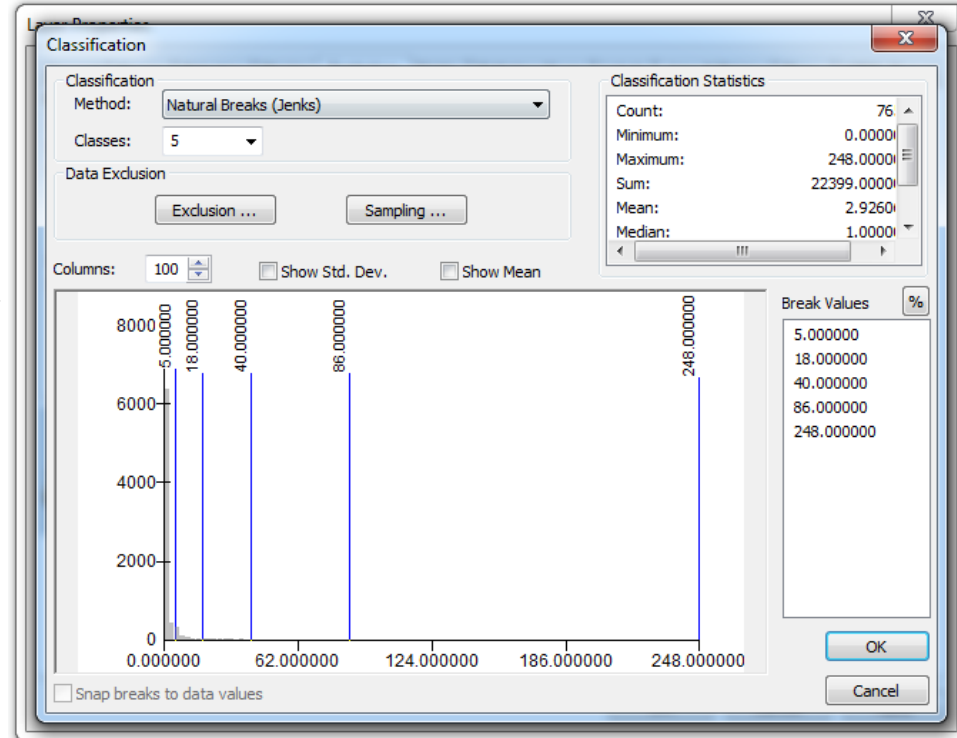
**In this session you will learn**

- **To apply the visualization theories in ArcMap**

**For more theories on visualization, see lecture S4.1**

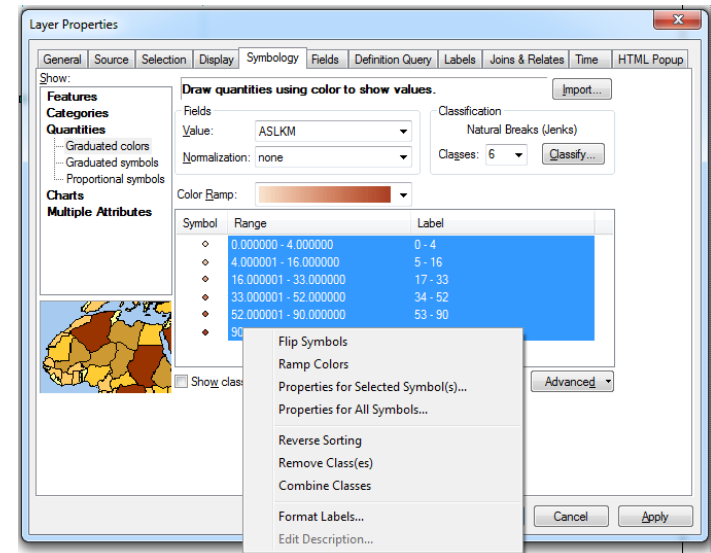
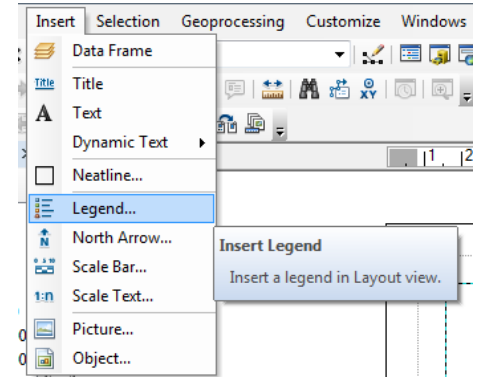
# Classification

- Can be found from layer properties -> Symbology -> Quantities -> Classify
- You can choose a method and number of classes, or manually set the breaks between the classes
- You can also exclude certain values; they will be hidden from view



# Inserting objects for maps

- Switch to Layout View from View -> Layout View; then you can insert a title, a legend, text, north arrow, scale bar etc.
  - Layout view has its own zooming tools
- The objects have lots of options
- Legend takes its values and text straight from the Table of Contents: if you wish to remove or change something, change it in Table of Contents and the legend will be updated
- If you want to change the number of digits shown, go to layer properties -> Symbology -> Quantities -> right-click the area where the values are shown -> Format Labels
  - If you select all classes, right-click and you can Change Properties for Selected Symbols to make all of them for example bigger



# Exporting a map

- If you wish to export a map (for example to image), use **File -> Export Map**
- This will create a picture of the **Layout View**