

LRK – Who we are? What we do?

- **Founded in 1947**
- **Club for marine technology students**
- **About 50 active members**
- **Activities**
 - Excursions to companies
 - Parties and sauna evenings
 - Linking students and industry
 - Maintaining connections to international students
 - Support studies



Clubroom Pilssi



Below restaurant Alvari

Annual conference with other universities

- Yearly conference of 50 maritime technology students
- Delegations from Aalto, KTH, Chalmers, DTU and NTNU
- Next spring in Finland!!!



Membership

- Lifetime membership costs 10 €
- **lrk.ayy.fi**

The screenshot shows the website for LAIVANRAKENTAJAIN KERHO (SHIPBUILDER'S CLUB). The navigation menu includes 'Frontpage', 'LRK's board', 'Events', 'NTHS', 'For Members', and 'Apply membership'. The 'Apply membership' link is circled in red, with an arrow pointing to it from the top right. Another arrow points to the club name 'LRK - LAIVANRAKENTAJAIN KERHO (SHIPBUILDER'S CLUB)' in the main content area. The page also features a 'Sponsors' section with logos for ELOMATIC, Merima, and NAPA.

LAIVANRAKENTAJAIN KERHO
SKEPPSBYGGARKLUBBEN
SHIPBUILDER'S CLUB

Frontpage LRK's board Events NTHS For Members **Apply membership**

LRK - LAIVANRAKENTAJAIN KERHO (SHIPBUILDER'S CLUB)

LRK is a club for students studying Naval Architecture and Marine Engineering in Aalto University School of Engineering. LRK is established in 1947 and today it has more than 70 active student members. LRK is managed by the board, which consists of 10 persons.

LRK's main goal is to take care of students social contacts to University and finnish shipbuilding industry. LRK is part of NTHS, an association for all five similar clubs in Scandinavia. LRK arranges many kind of activities for students around year, such as excursions in Finland. Over the years LRK has also arranged many excursions to foreign countries.

Generally LRK is well known of it's good spirit, active members and well arranged events. LRK has also good contacts to many graduated students, who yet have leaved University behind.

Sponsors

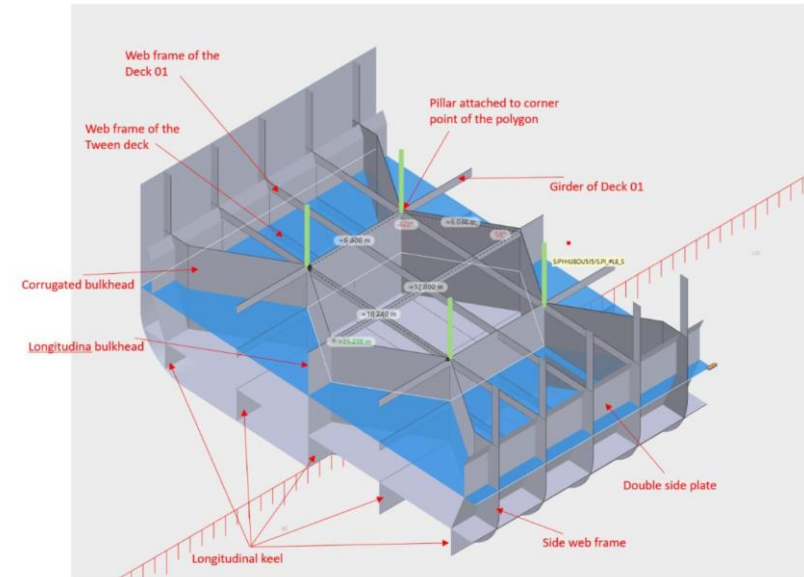
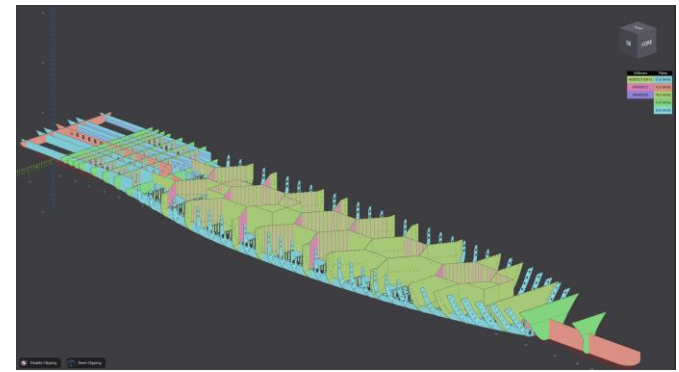
ELOMATIC
CONSULTING & ENGINEERING

Merima

NAPA

Archive

- Master's Thesis archive
- PNA and SDP course project works
- Online archive for distance studie
 - Send an email to lrk@list.ayy.fi
 - We'll provide access to folder



Welcome!

