

Contemporary perspectives on people with intellectual disabilities

Laura Isoniemi

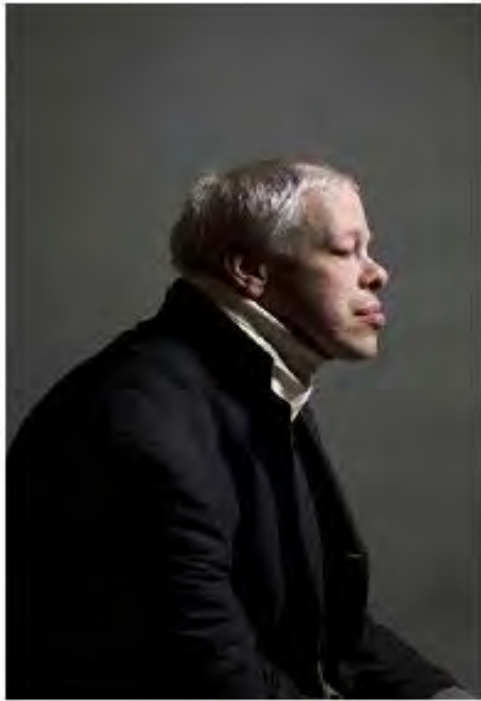
Aalto Arts

29.9 2015

Attitudes

The way people with intellectual disabilities are presented
can be respectful, ignorant or realistic

Photos: Pekka Elomaa







Attitudes are based partly on the picture that media is showing



Integration to society goes partly through vip persons example.
People with intellectual disability are more visible.



The Duudsons took a person with mental disability to driving race









With helping devices the daily life and normal hobbies can be achieved



Today's young people with intellectual disability
want to express themselves independently
-with a little support





- Intellectual disability is a difficulty to learn and understand new things. It is restricting only some parts of human activities. Intellectually disabled people have different and various kinds of other capacities .

With therapies, right environment and support these people can learn and progress and live normal life , though the disability is permanent





40 000 people in Finland have intellectual disability

There are many reasons for disabilities :

- disorders in genetics
- problems in pregnancy
- the difficulties in birth
- Accidents ,childhood illnesses
- Past years the genetic researchers have progressed in defining new diagnosis for disabilities> helps in finding right therapies and cure.

- 30 % of severe intellectual -and 50 % out of slight intellectual disabilities remain unsolved
- Intellectual disability should not be mixed to cp- physical disability, though people may suffer of them as well.
- Intellectual disability is not an illness and not contagious

Intellectual disabilities can be observed from three angles

- Diagnostic point of view
- From the point of view of the ability to be able to act
- Social point of view

Diagnostic point of view

- is the most traditional way of observing disabilities. IQ measuring is one way of defining intelligence as well as other ways of measuring academic skills. Diagnosis are essential in organising the supporting structure for disabled people. The diagnosis should not define the person.

Ability to be able to act

- - point of view approaches the people with disabilities out of the angle how she or he has capacity to manage in different environments
- The capacity to act occur differently in various surroundings and environments; like at home, at work or with different people. This way of description is used, when the quality of life and strengths in it are being thought.

Ability to be able to act can be divided into 3 sections , which each define the persons abilities to manage in daily life

- Physical ability to act
- Mental ability to act
- Social ability to act
- Fourth section can be experiential ability to act

- Psychosocial matters make a big difference into the ability to act. Ability to act means also other things than physical or motoric ability
- Persons physical and mental behaviour and actions **occur** and **are only able** in social interaction. Th interaction is headed both to outer environment and social relationships.

- The ability to be able to act means always a relationship between human and the environment around her or him. In some occasions the person can be very disabled , in some circumstances not.
- With the ability to be able to act is meant here the ability to behave the expected way that circumstances demand .

Social point of view

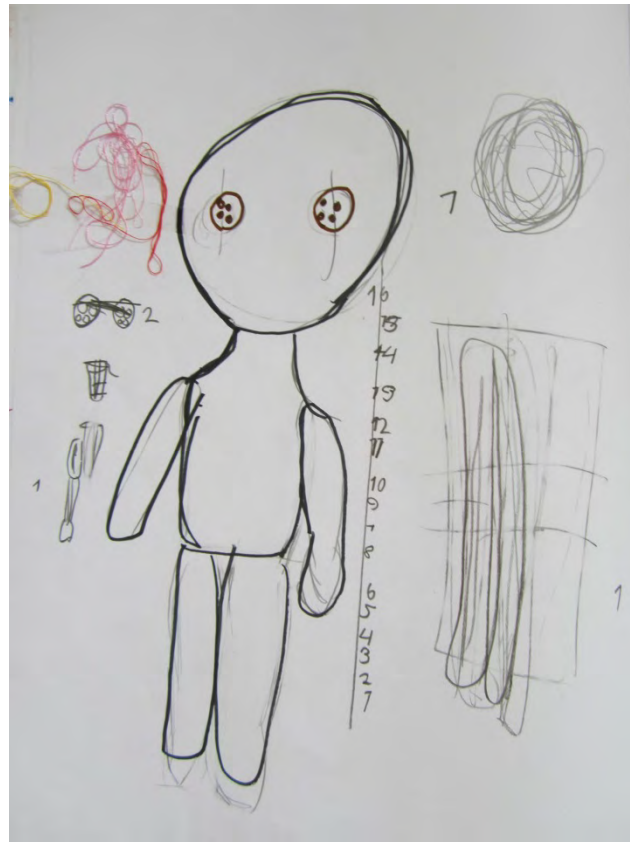
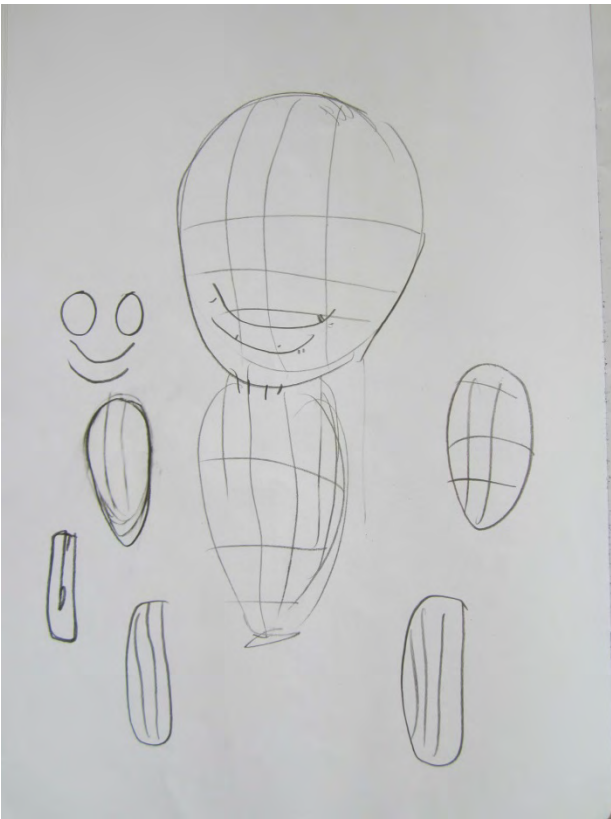
- This point of view reveals that the people with disabilities are depending on other people's help. It underlines that prejudices, discrimination and inequality provide this dependence on others.
- Social point of view underlines that disabled people are as equal citizens as others are. This is done by benefitting laws tailored for disabled people.
- Disability is understood in different cultures in different ways and has been accepted by the time in a various ways
- Source:<http://verneri.net/yleis/kehitysvammaisuus>

Pluses

- Society is getting partly more disabled-friendly though prejudices still exist.
- People with intellectual disabilities learn to know their rights and are working as unities
- Social security system in Finland covers the expenses for disabled people and is responsible to arrange the living and studying circumstances (though quality varies much in counties)

Minuses

- Disabled peoples rights are depending on the way their assistants or relatives take care of them
- Disabled men cannot have a driving license or go through military service
- Disabled women, girls and men suffer from the threats of sexual violence and abuse
- Loneliness is the biggest problem because of the lack of social skills and independency



- <https://www.sproutflix.org/films/all-videos>