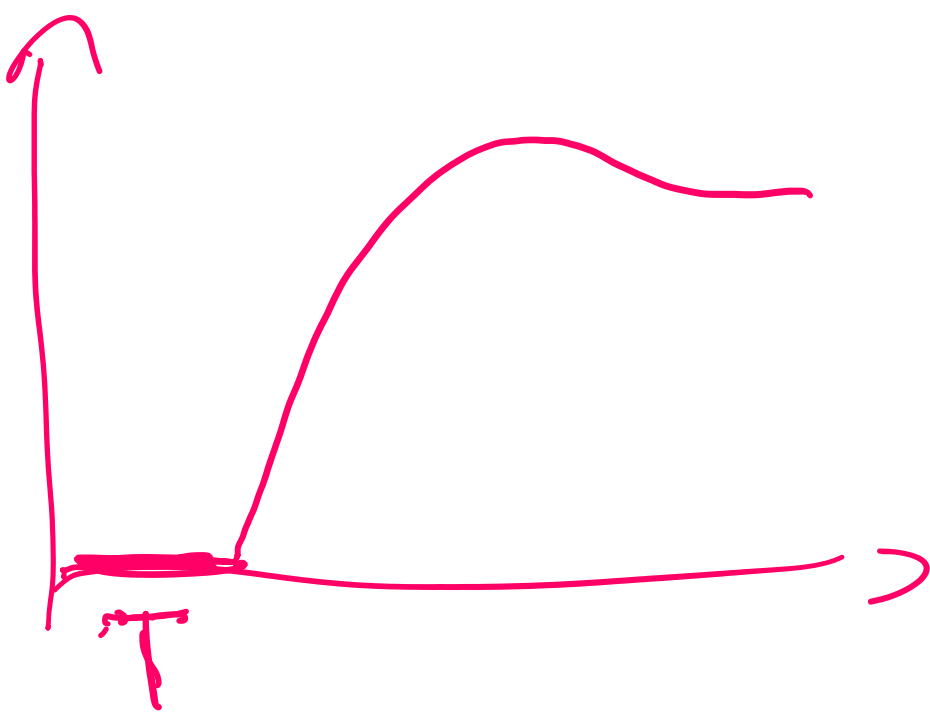
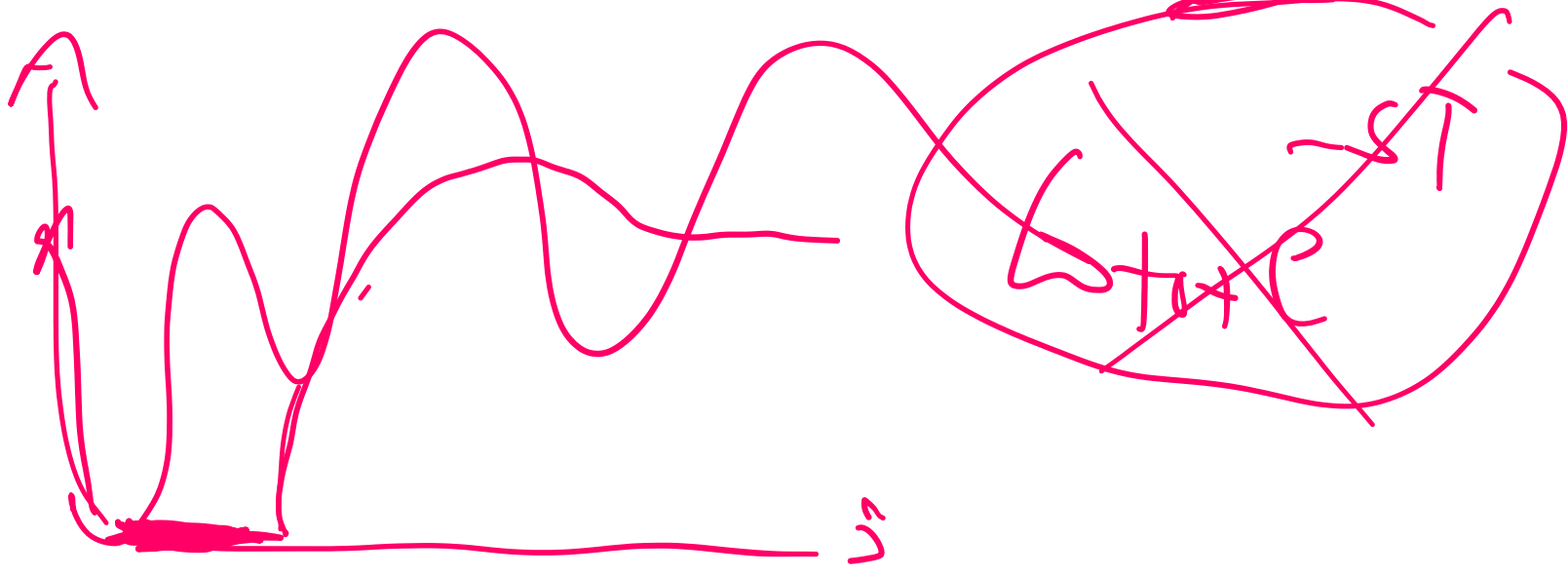


Lec 10

Wednesday 18. November 2020

14.12



$$y = bu + w$$

$$u = -F_y y \Rightarrow$$

$$u = -F_y (bu + w) = -F_y bu - F_y w$$

$$(I + F_y b) u = -F_y w$$

$$u = -(I + F_y b)^{-1} F_y w$$

$$= \underbrace{-F_y (I + \Delta F_y)^{-1}}_{\Delta w} w = \underbrace{-F_y S w}_{\Delta w}$$

$$z_1 = W_u u = W_u \Delta w$$

$$z_2 = W_T b u = W_T b F_y S w = -W_T T w$$

$$z_3 = W_S (bu + w) = W_S S w$$

$$S + T = I$$