



Aalto University  
School of Engineering

# Operation Management in Construction Assignment #1 – Location-Based Planning

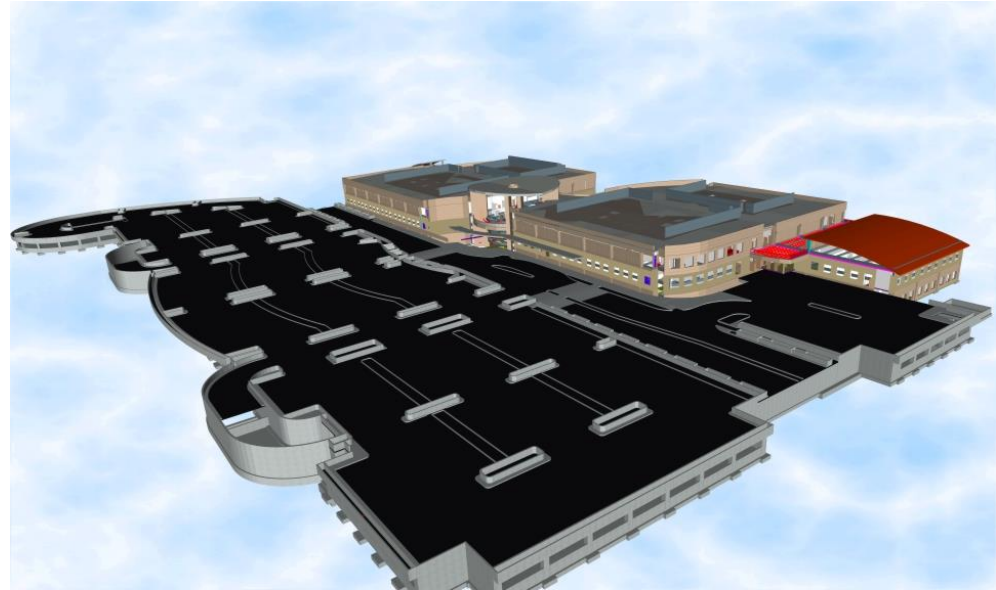
**Olli Seppänen**  
Associate professor

# Schedule Planner tutorial – session 1 – Building group

- **Introduce starting data and project**
- **Enter quantities**
- **Form a few tasks and add dependencies**
  
- **Individual work in groups in contact session**
  
- **Readings during assignment:**
  - Location-Based Management for Construction, Chapter 7

# Project – Camino Medical Center (California)

- **\$100M Medical Office Building**
- **3-levels + garage**
  
- **Task:**
  - **Schedule the interior and MEP work**
  - **Finish on time**
  - **Maximize flow**
  - **Follow resource constraints**



# Software features covered in this tutorial video

- **Importing quantity data from Excel Spreadsheet to Vico Schedule Planner**
- **Creating the first three schedule tasks in the assignment**
- **Exploring As soon as possible / paced work**
- **Schedule optimization by changing slopes of flowline**
- **Setting up custom schedule views**
- **Using resource graphs**

# Moving to Excel and Schedule Planner

