



Basic use of RRUFF Database

Search interface

<http://rruff.info>

Search RRUFF Sample Data

Enter search criteria or leave all the fields blank to retrieve all available data.

Mineral: lookup

Chemistry Includes: lookup

Chemistry Excludes:

General:

Sort By: Names asc

display options

1. Click to get periodic table search interface

Click an element once to include, twice to exclude.

Clear Chemistry

Exclude all non-selected

H	Li	Be	B	C	N	O	F	Ne									
Na	Mg	Al	Si	P	S	Cl	Ar										
K	Ca	Sc	Ti	V	Cr	Mn	Fe	Co	Ni	Cu	Zn	Ga	Ge	As	Se	Br	Kr
Rb	Sr	Y	Zr	Nb	Mo	Tc	Ru	Rh	Pd	Ag	Cd	In	Sn	Sb	Te	I	Xe
Cs	Ba	*	Hf	Ta	W	Re	Os	Ir	Pt	Au	Hg	Tl	Pb	Bi	Po	At	Rn
Fr	Ra	**															
	*	La	Ce	Pr	Nd	Pm	Sm	Eu	Gd	Tb	Dy	Ho	Er	Tm	Yb	Lu	
	**	Ac	Th	Pa	U												

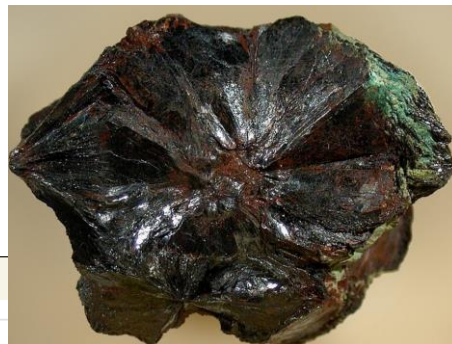
2. Select Fe and O and Exclude all non-selected

Displaying: 1 - 11

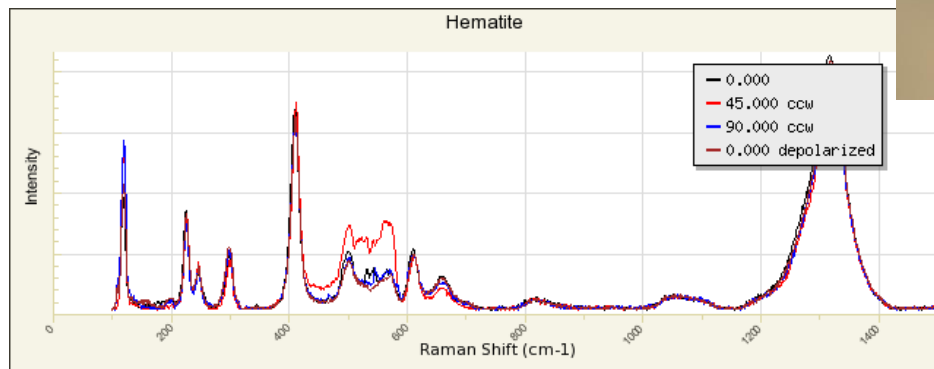
<input type="checkbox"/>	NAMES	RRUFF ID	IDEAL CHEMISTRY
<input type="checkbox"/>	Hematite	R040024	Fe ₂ O ₃
<input type="checkbox"/>	Hematite	R050102	Fe ₂ O ₃
<input type="checkbox"/>	Hematite	R050300	Fe ₂ O ₃
<input type="checkbox"/>	Hematite	R060190	Fe ₂ O ₃
<input type="checkbox"/>	Hematite	R070240	Fe ₂ O ₃
<input type="checkbox"/>	Hematite	R110013	Fe ₂ O ₃
<input type="checkbox"/>	Magnetite	R060191	Fe ²⁺ Fe ³⁺ ₂ O ₄
<input type="checkbox"/>	Magnetite	R060222	Fe ²⁺ Fe ³⁺ ₂ O ₄
<input type="checkbox"/>	Magnetite	R060656	Fe ²⁺ Fe ³⁺ ₂ O ₄
<input type="checkbox"/>	Magnetite	R061111	Fe ²⁺ Fe ³⁺ ₂ O ₄
<input type="checkbox"/>	Magnetite	R080025	Fe ²⁺ Fe ³⁺ ₂ O ₄

Click here

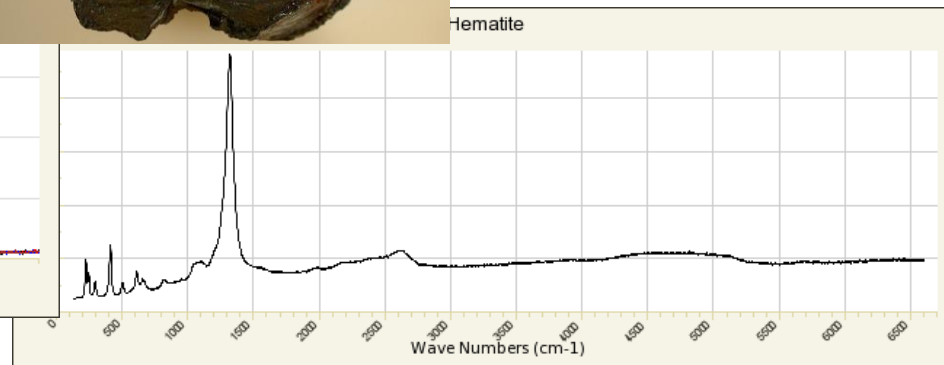
Results



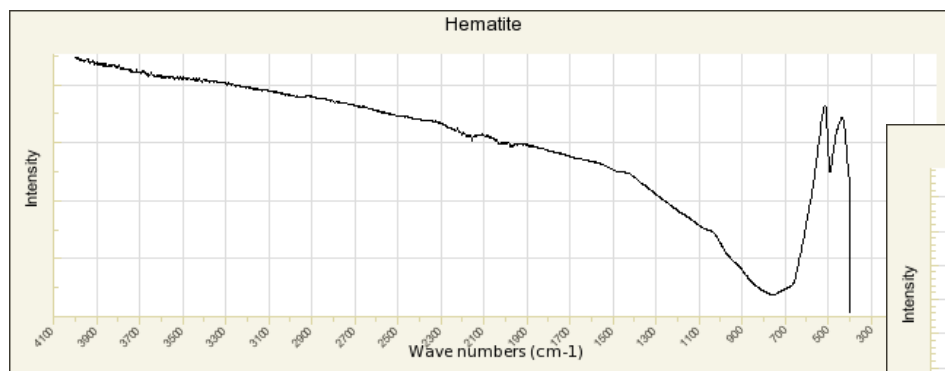
Name: Hematite
RRUFF ID: R040024
Ideal Chemistry: Fe_2O_3



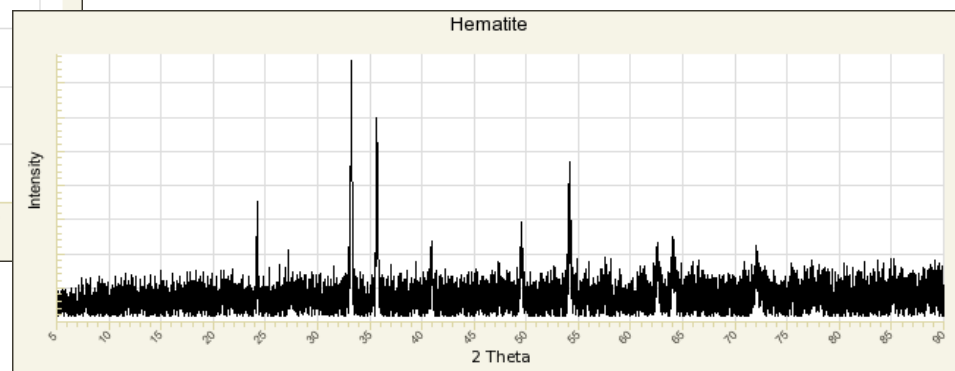
Raman spectrum ($< 1400 \text{ cm}^{-1}$)



"Broad" Raman scan ($< 6500 \text{ cm}^{-1}$)



Infrared spectrum



Powder XRD (noisy!)