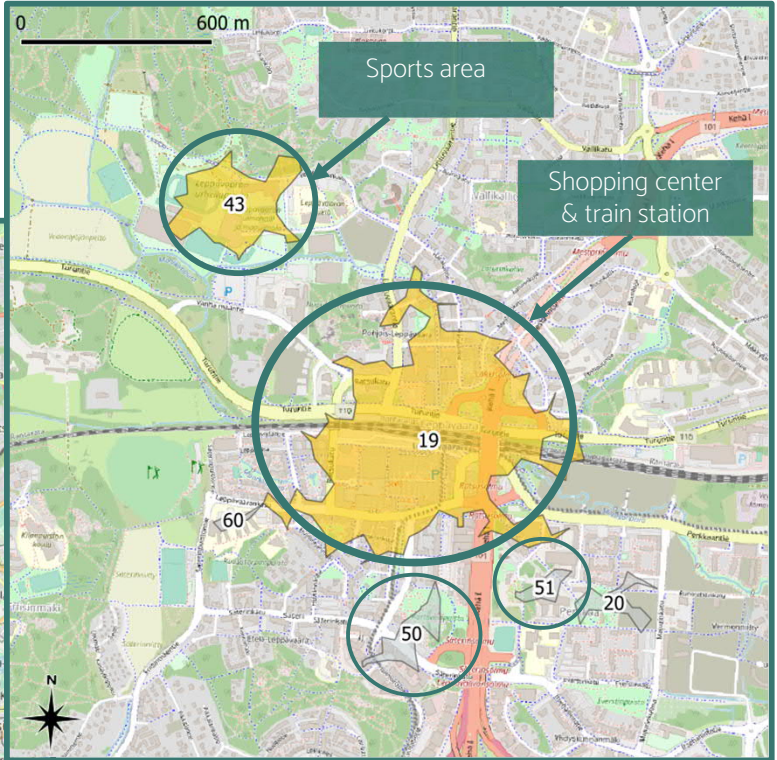
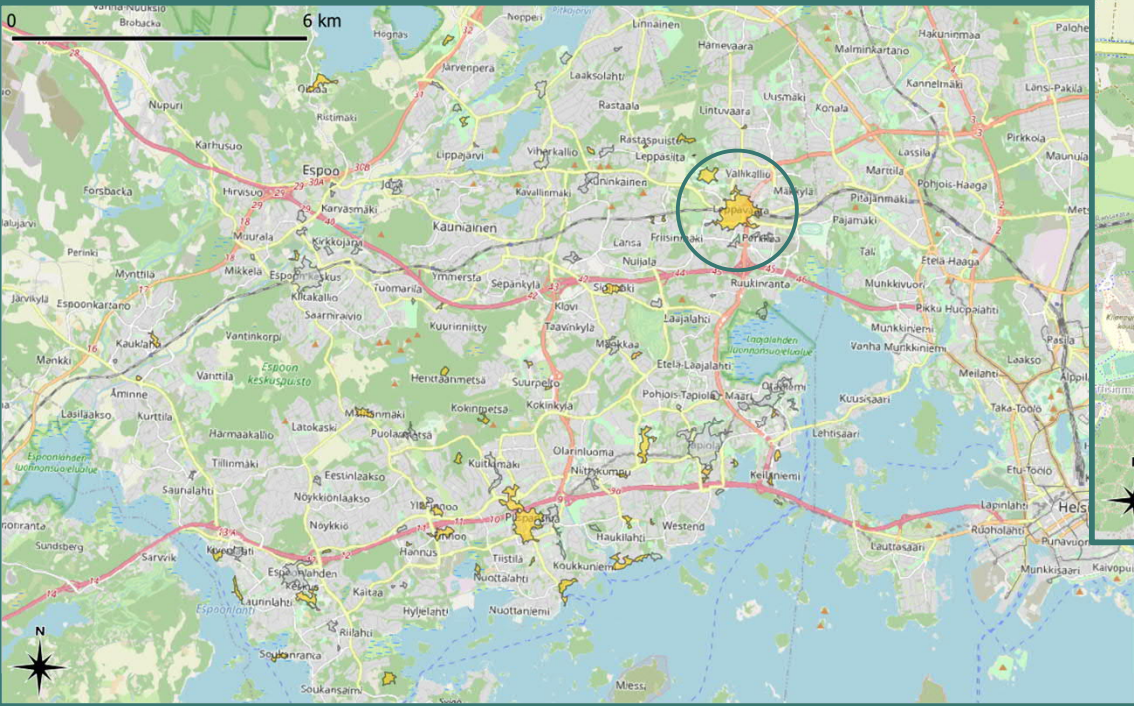


# Negative urban experiences in Leppävaara

Paula Autio, Jonas Zaknoun, Siiri Korhonen, Nuria  
Keeve, Jami Salama

# Clusters: Leppävaara



# Negative and positive special places



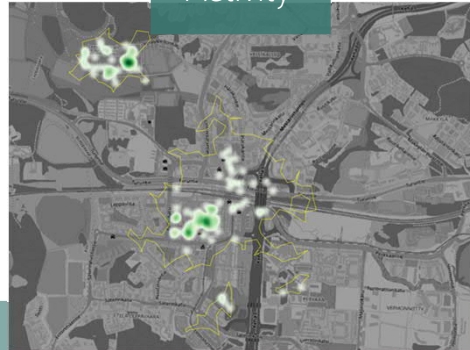
Social



Activity



Aesthetic

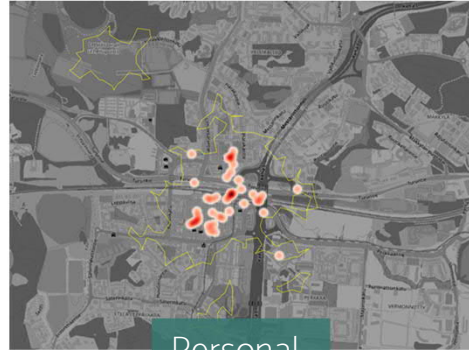




# Negative and positive special places



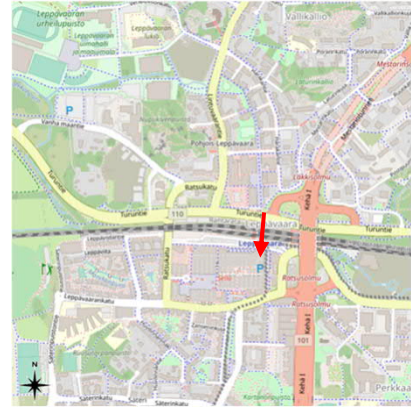
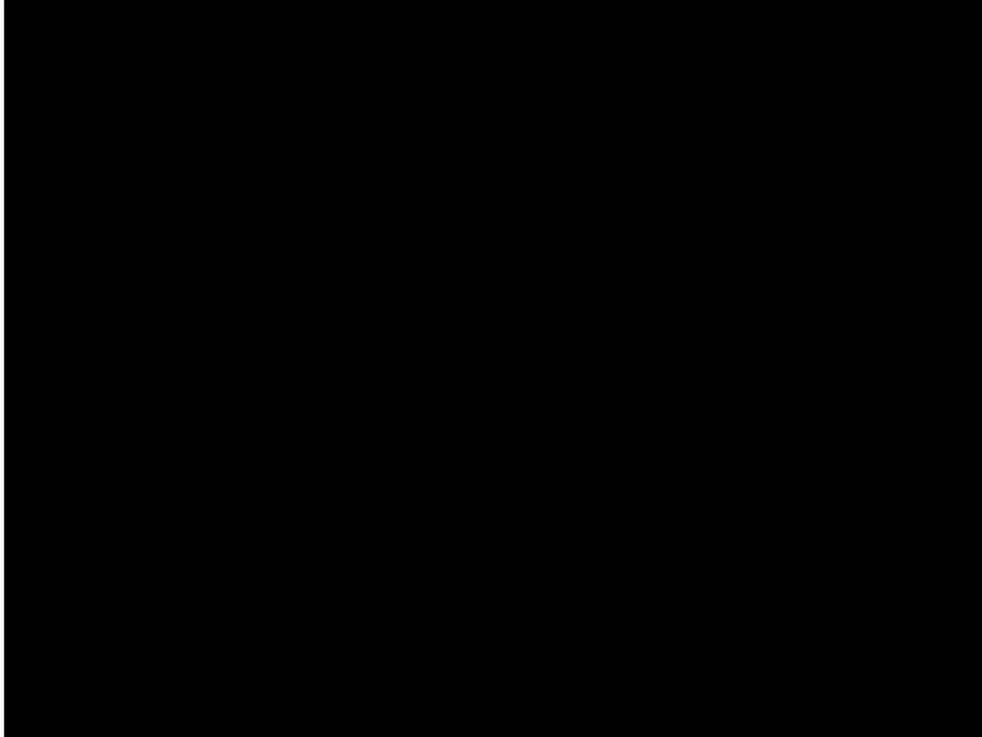
Atmosphere



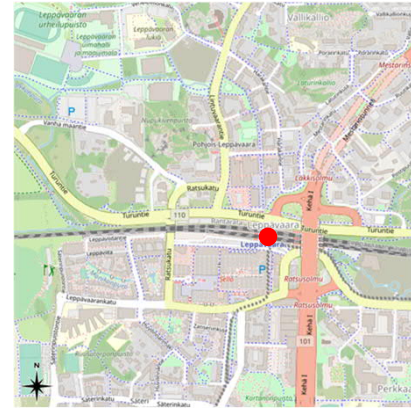
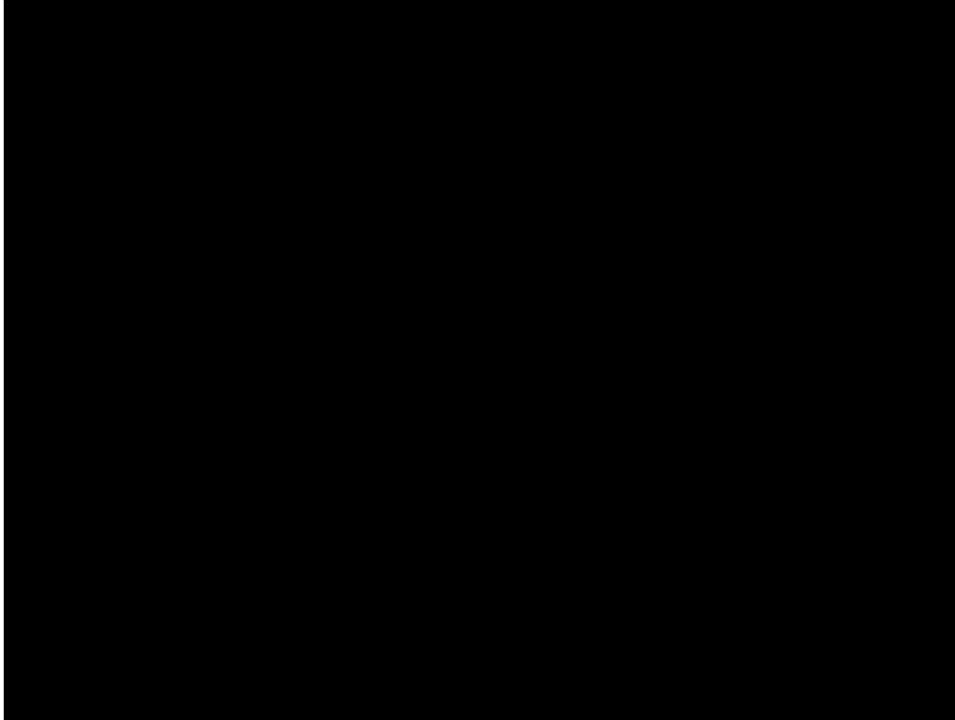
Personal



# On site analysis



# On site analysis



# Notes from the on site analysis

Noise levels

Not enough greenery

Land use policy defective

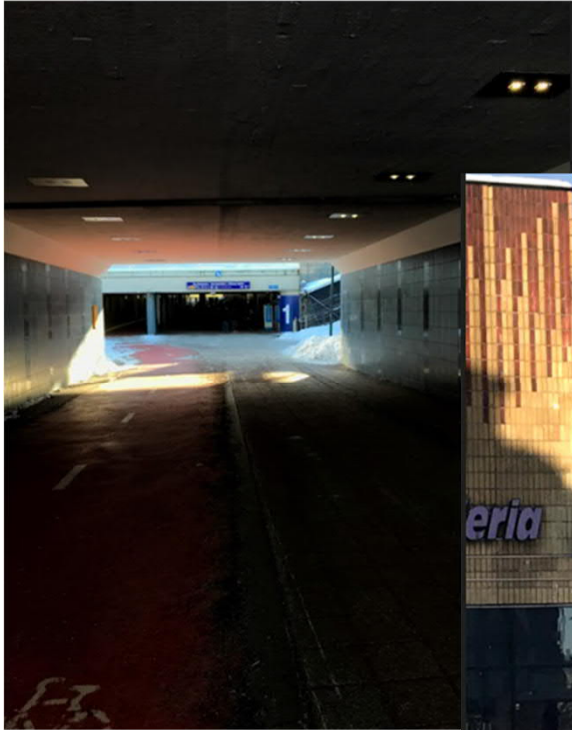
Threatening looking people

Darkness

Uncleanness

Narrow pathway

Low ceilings



What makes the  
are feel unsafe?

Who?

from where  
do they  
come  
from?

Residents  
or just  
passers-by?

Why do  
they visit  
the area?

How often  
do they  
visit the  
area?

age

Why?

what are the  
reasons of  
feeling unsafe  
(answers in  
questionnaire)

Noise  
levels

Not  
enough  
greenery

Land use  
policy  
defective

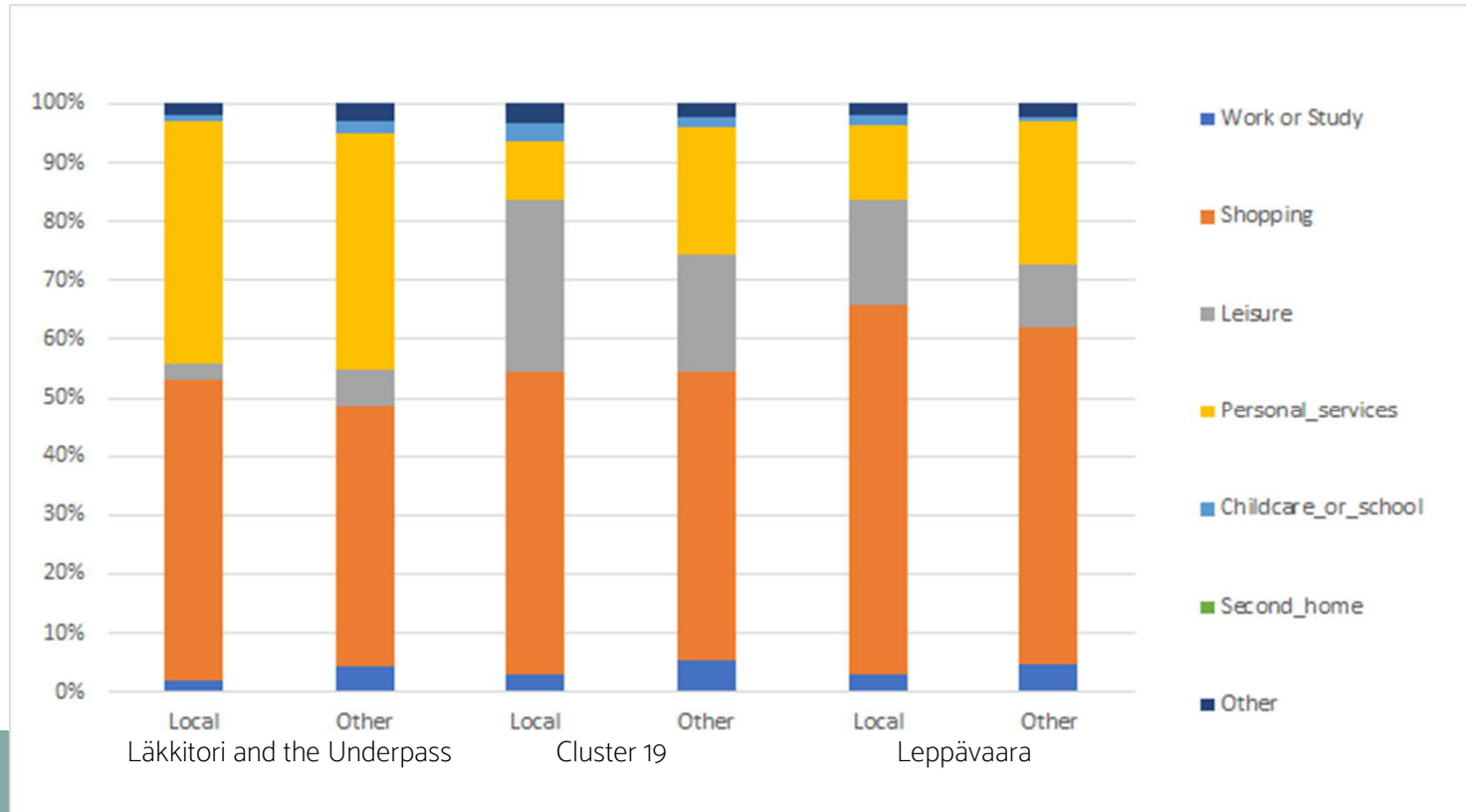
Threatening  
looking  
people

Not  
enough  
lightening

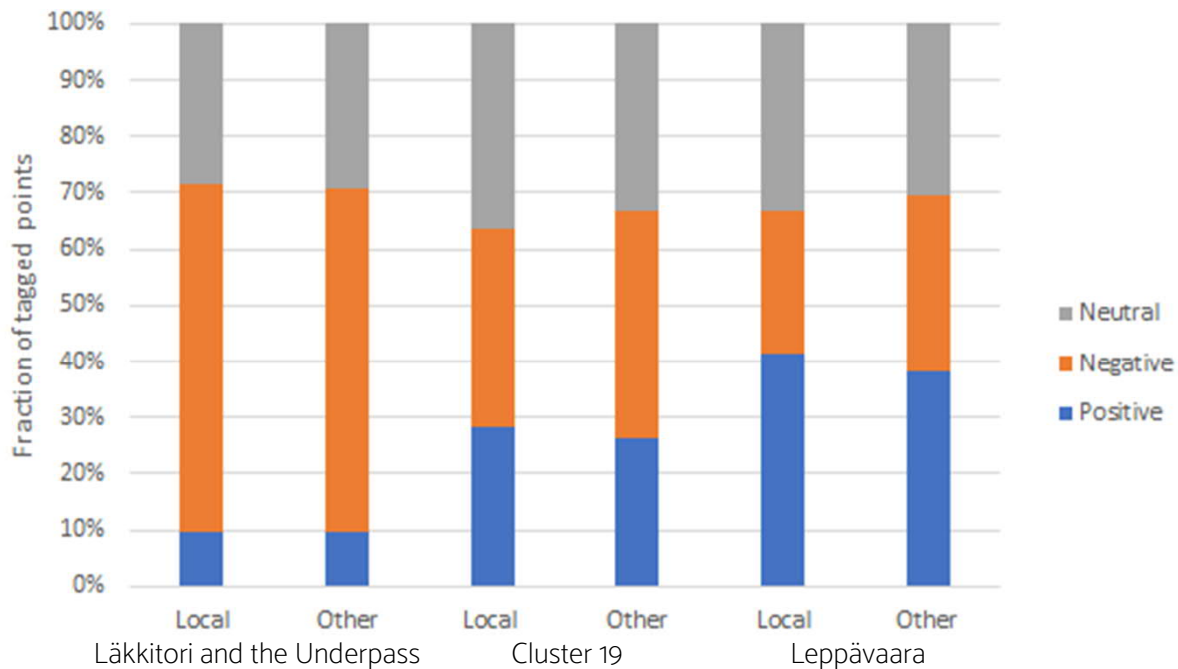
Unclean  
environment



# Who is visiting these locations and why?



# Are there opinion differences of locals to others?



Läkkitori and the Underpass  
40% locals and 60% other

Cluster 19  
30% locals and 70% other

Leppävaara  
30% locals 70% other

# Why are these locations perceived as negative?

“The **services** in Leppävaara are exactly the same as 10 years ago, even though there are **more people**.”

“The **transport arrangements** are very confusing in the Sello area of Leppävaara.”

“Recycling. Only Sello has a **recycling point** for plastic in the Greater Leppävaara area.”

“The area surrounding Galleria looks **absolutely horrid**. We call it ‘the ghetto’. A terrible relic from maybe the 80s.”

# Suggestions of improvements by participants

“The differences between North and South Leppävaara is like night and day. I look forward to the **demolition of the Galleria** shopping center and the expansion of Sello.”

“More **surveillance cameras** to avoid crime and vandalism. Especially for the underpasses near Sello.”

“In Leppävaara, it would be worth thinking about a new **health center**. The current is old and poorly transformable to modern needs.”

“Let’s make the Leppävaaranraitti ( Northern Leppävaara “boulevard”) more pleasant and tidy. **Trees, plantings and benches** should be added - and especially continuous **graffiti removal** should be arranged.”

# Proposed improvements

Encourage graffiti

Illusion of a more open space

Art by locals

Wayfinding through art

Transportation planning in the area

Improving social services:  
treat issues instead of hiding problems

Repurposing Galleria

Supporting local businesses

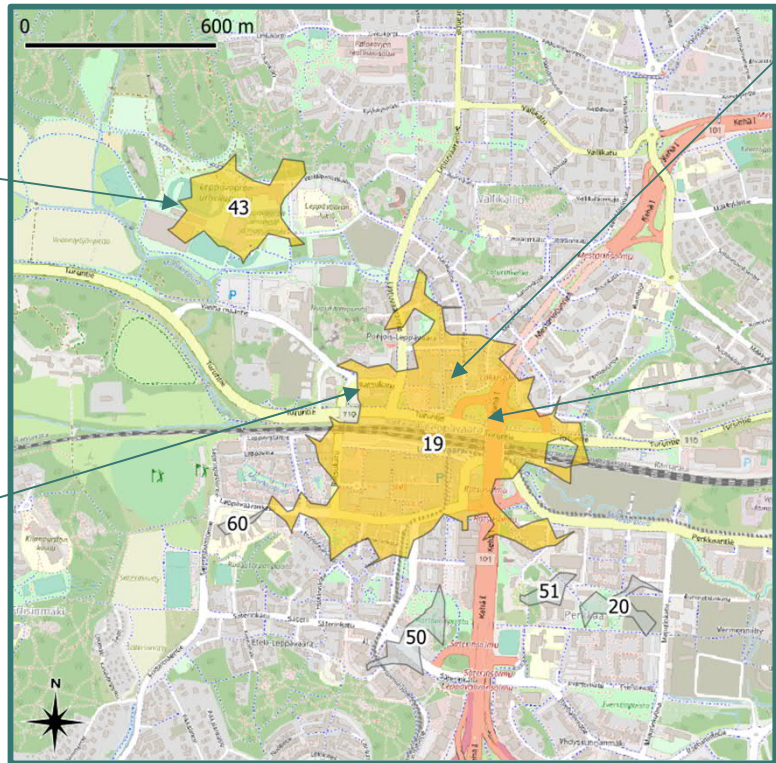




# Conclusion

Area is visited for a purpose:  
usually a pleasurable activity. →  
Positive experiences

The places which are felt negative  
are not visited with the intention of  
gaining experiences, but seem to  
create negative feelings for the  
bypassers.



The underpass and Läckitori are visited daily, but are generally not liked. They act as a pathway in between two liked locations.

The area has great potential if improved. Improvements can have a big impact for many people.

No big differences in between opinions of locals and others.