

# Assignment 5a

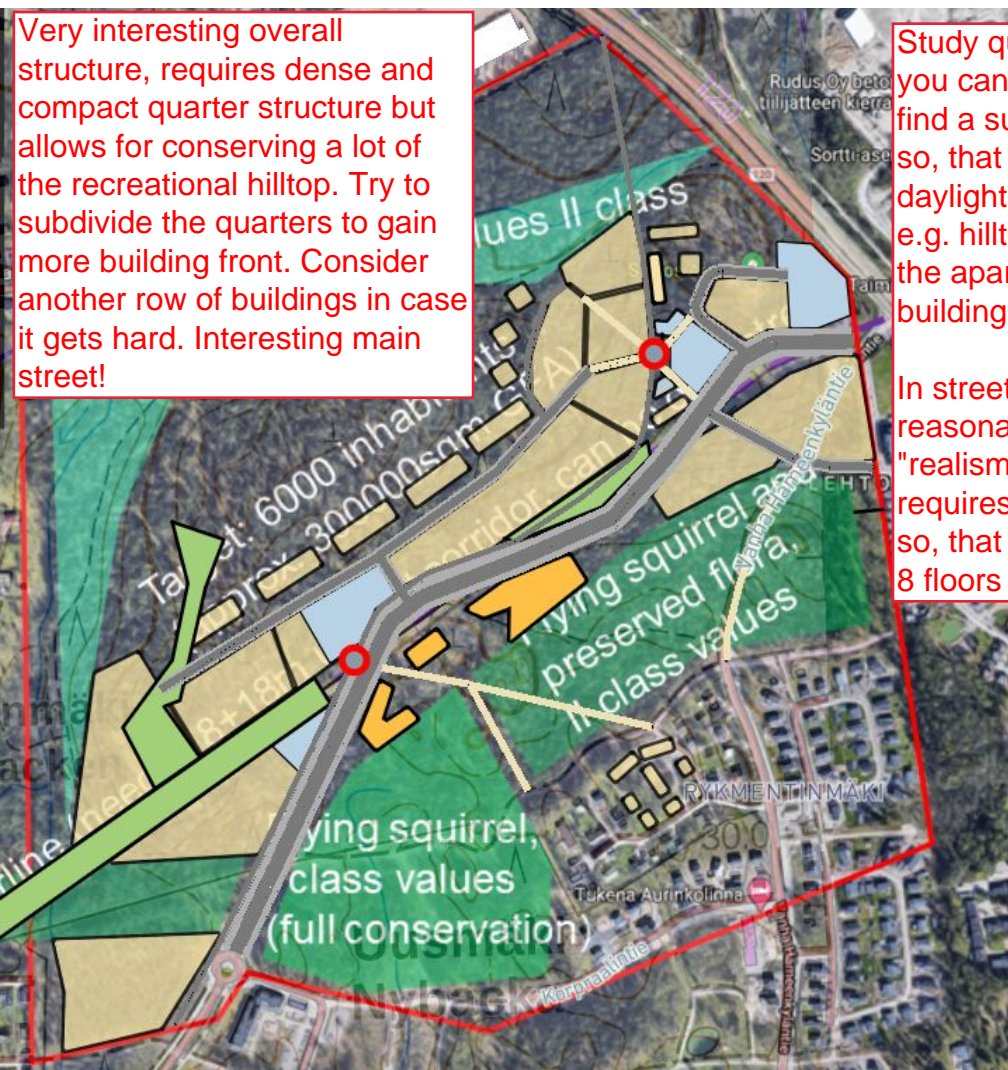
## Uusmäki urban infill development

### Iteration 1

Group D

Antti Kivikko, Venla Salomaa & Valtteri Nurminen

Very interesting overall structure, requires dense and compact quarter structure but allows for conserving a lot of the recreational hilltop. Try to subdivide the quarters to gain more building front. Consider another row of buildings in case it gets hard. Interesting main street!

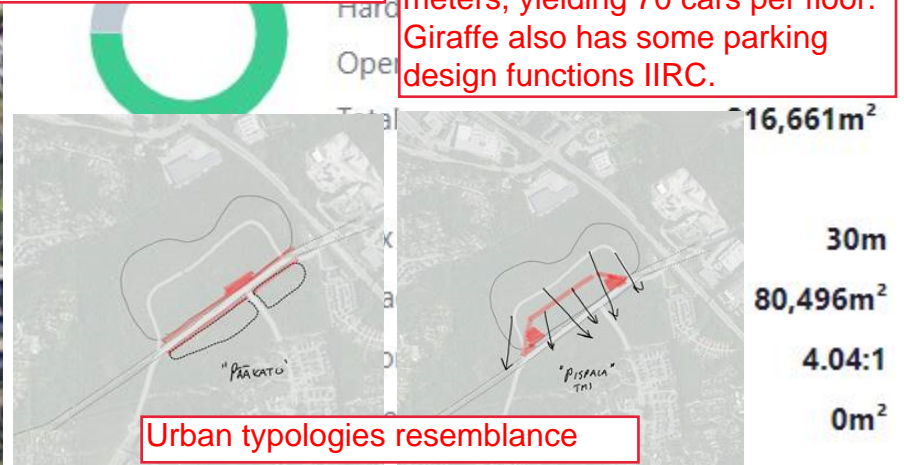


Study quarters further to see that you can fit the inhabitants. Try to find a suitable building height idea so, that the quarters receive daylight from south to southwest: e.g. hilltop can be higher, so that the apartments look over the lower buildings.

In streetscape 5 floors is a reasonable height, 8 floors is a "realism step": higher than that requires more expensive solutions so, that typically the step up from 8 floors goes as high as 12 floors.

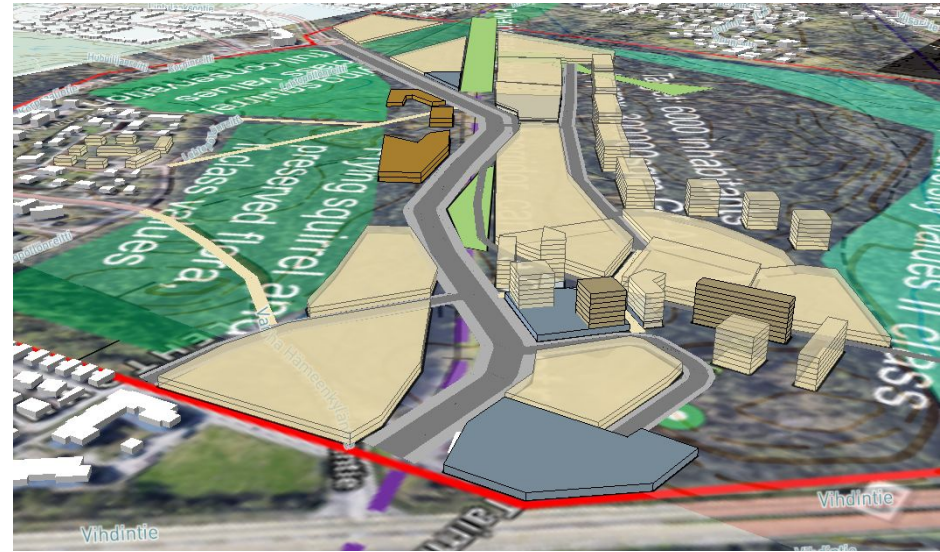
You have received a variety of nature studies from the area, indicating conservation values more precisely. Try to find a compromise on the interesting idea and the clarified natural values. The urban and interesting main street is a strenght of the proposal, relying on buildings on both sides of the street, try to preserve this idea.

Study the parking requirement of 1 car per 100 sqm GBA. A typical parking building is 38x50 meters, yielding 70 cars per floor. Giraffe also has some parking design functions IIRC.



Urban typologies resemblance

# First 3D-drafts for the Uusmäki area



# Draft of planning principles

- Nature scale for human well-being
- Smooth sustainable mobility
- Attractive

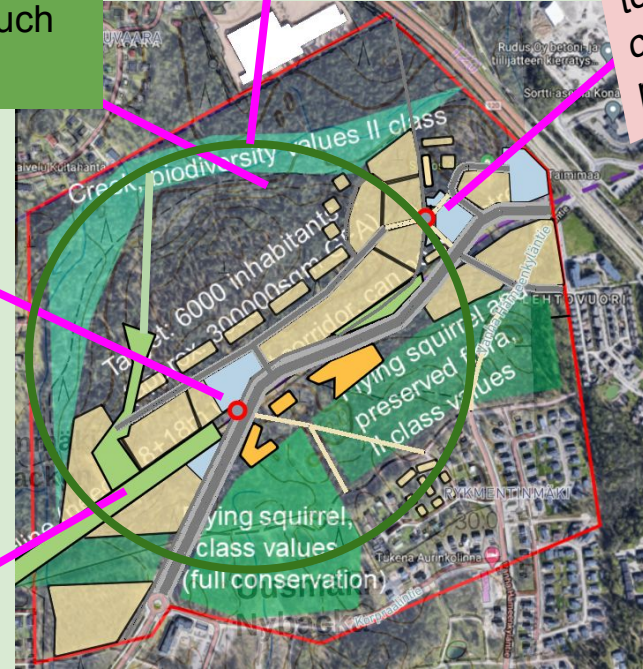
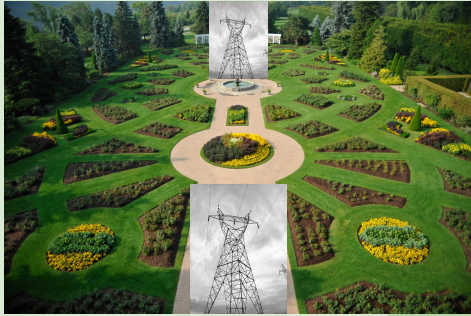
Preservation of existing natural areas as much as possible

Circular nature enjoyment route

Tram stop 1 to serve commercial purposes

Tram stop 2 to serve public services and housing

Green connection and power line garden / public park



# Questions related to Uusmäki planning

- What kind of/ what size of grocery store could be planned for the area

Typical sizes are 400, 800, 1200 sqm in 1 floor  
I would think there could be 2 or 3 competing  
stores for maximum of 1200-1600sqm.

- How many tram stops we are able to locate in the planning area?

Stop interval is at minimum 600 meters, probably  
one stop, maximum 2.

THANK YOU!