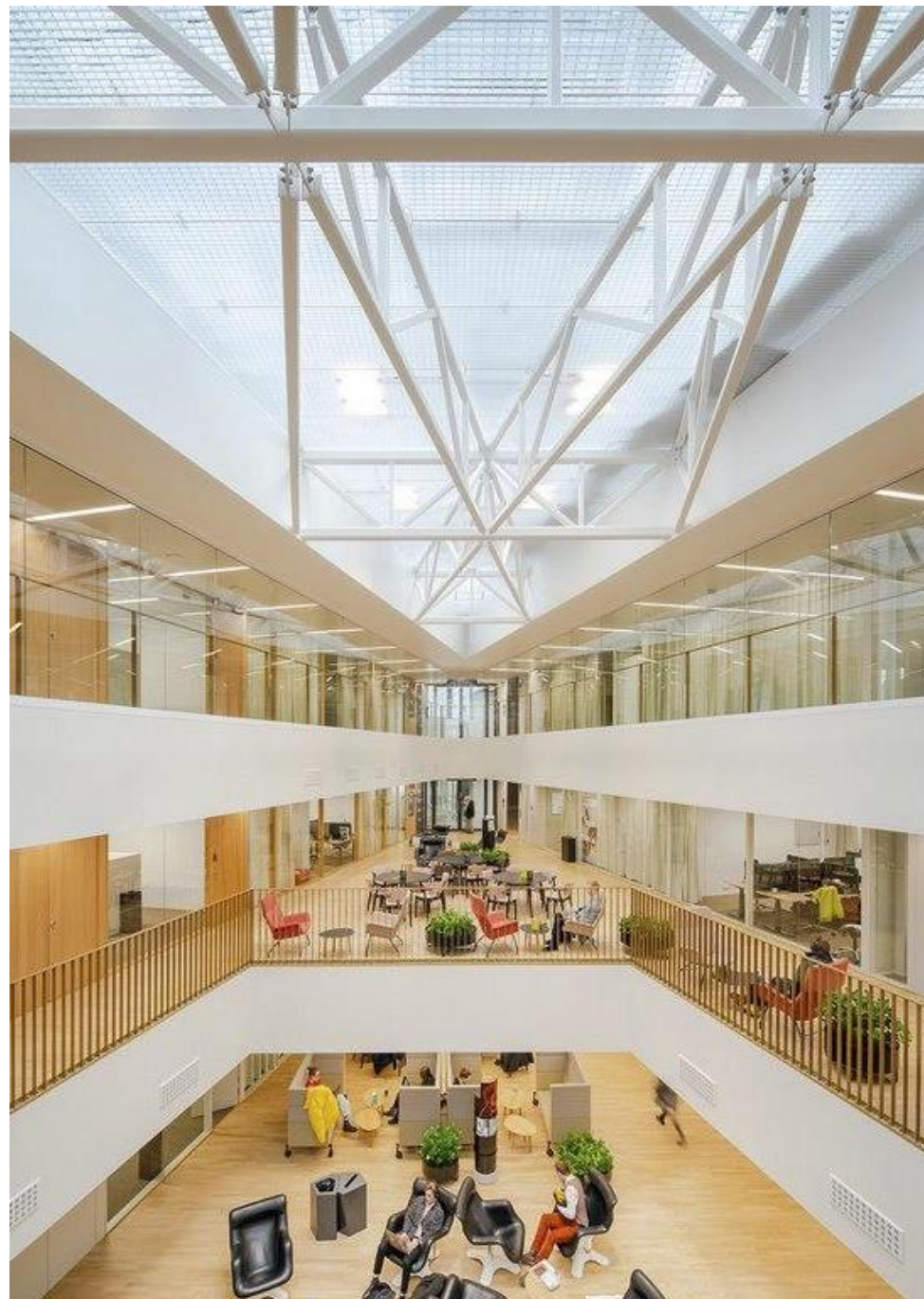


# BSc. Programme in Economics

## Orientation to studies and information on course registration

*Kati Halminen and Petra Kuisma,  
Learning Services  
7 September 2021*



# Welcome to study Economics!

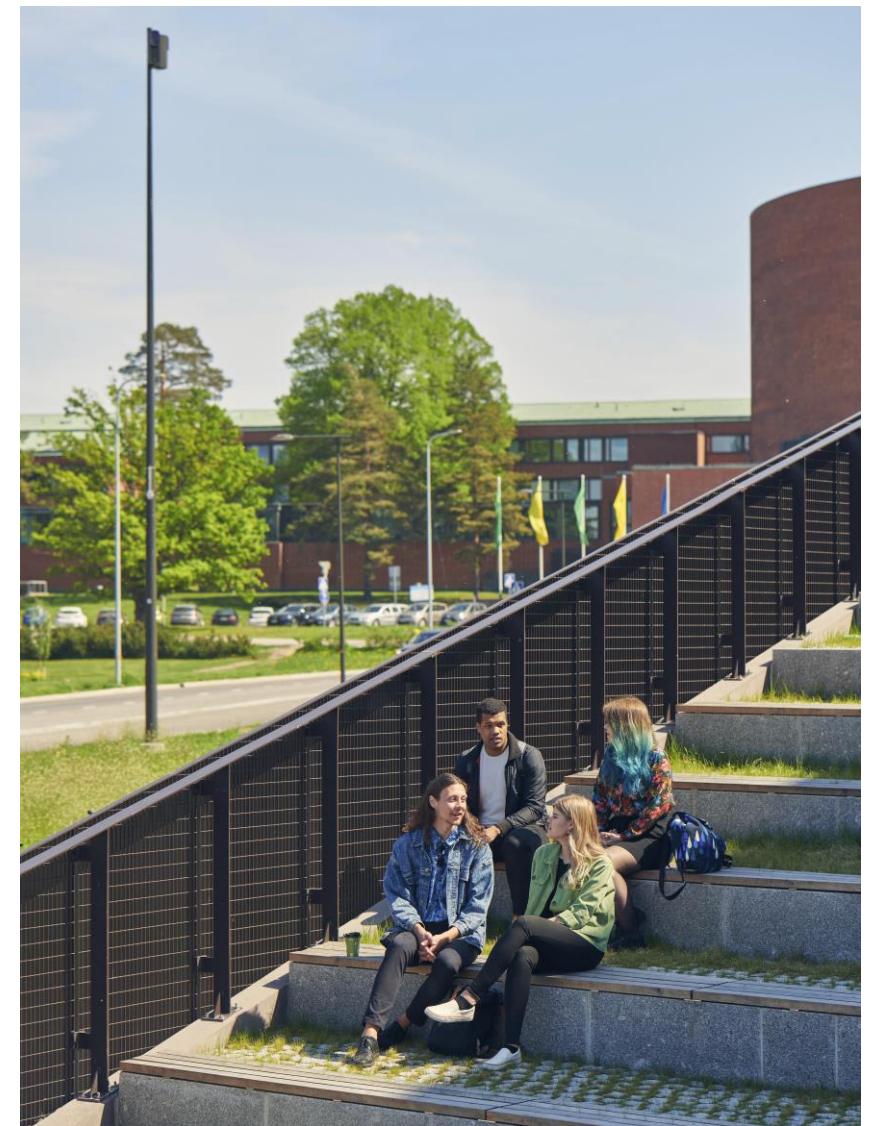
Question: where are you located right now?  
You can type your answer in the chat



Aalto University  
School of Business

# Agenda

- 1. BSc programme in Economics and the degree**
  - Degree structure and timing of studies
  - Recommended studies for the first year
- 2. Studying at Aalto University**
  - Teaching periods and exams
  - E-tools and course registration
- 3. Study guidance and counselling**
- 4. Campus**
- 5. Questions and discussion**



# Orientation week and studies in the Fall 2021

- Orientation week mostly online
- **Welcome event for new Economics Bachelor students**  
**Wed 8.9.2021 at 13 - 14.30**
  - *Otaniemi: Ekonominaukio 1 / Possibility to attend online via Zoom*
  - *Students and Economics faculty (first year teachers)*
- Teaching in fall 2021 primarily online / hybrid
- Always check detailed information on the course's **MyCourses** page ([mycourses.aalto.fi](https://mycourses.aalto.fi))

# 1. BSc programme in Economics and the degree



Aalto University  
School of Business

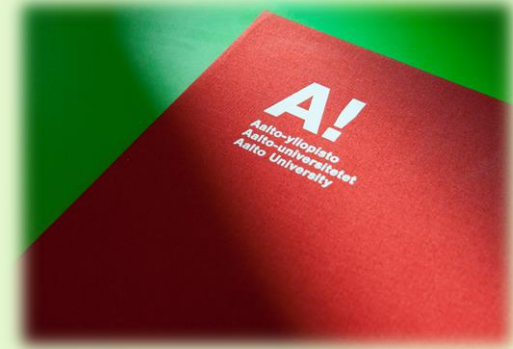
# Aalto Bachelor's Programme in Economics

- **Organized by Aalto University School of Business, from 2019**
- **Number of students:**
  - 1<sup>st</sup> year students: 55
  - 2<sup>nd</sup> year students: 41
  - 3<sup>rd</sup> year students: 38
- **Economics students in the Finnish Kauppatieteiden kandidaattiohjelman (Bachelor's programme in Business)**
  - 140 students majoring in Economics
- **Master's programme in Economics**
  - 160 students

# Normative duration of BSc degree

**Bachelor's degree 180 cr = 3 years of full time studies**

**BSc. graduation in June 2024**



You have been admitted to study both BSc. And MSc. degree at the School of Business. A student admitted to study for the Bachelor's and Master of Science degree has the right to complete the degree in a time exceeding the normative duration (3 years for BSc. degree and 2 years for MSc. degree) of studies by a maximum of two years. So altogether your study right has been granted to you for 7 years.

**Remember to enroll as attending/non-attending for each semester!**

You can register as non-attending for max. 2 semesters (1 year) and it does not affect your study time.

# Bachelor's degree structure

- Three years with 60 ECTS / academic year = 180 ECTS credits
- Bachelor of Science (Economics and Business Administration)

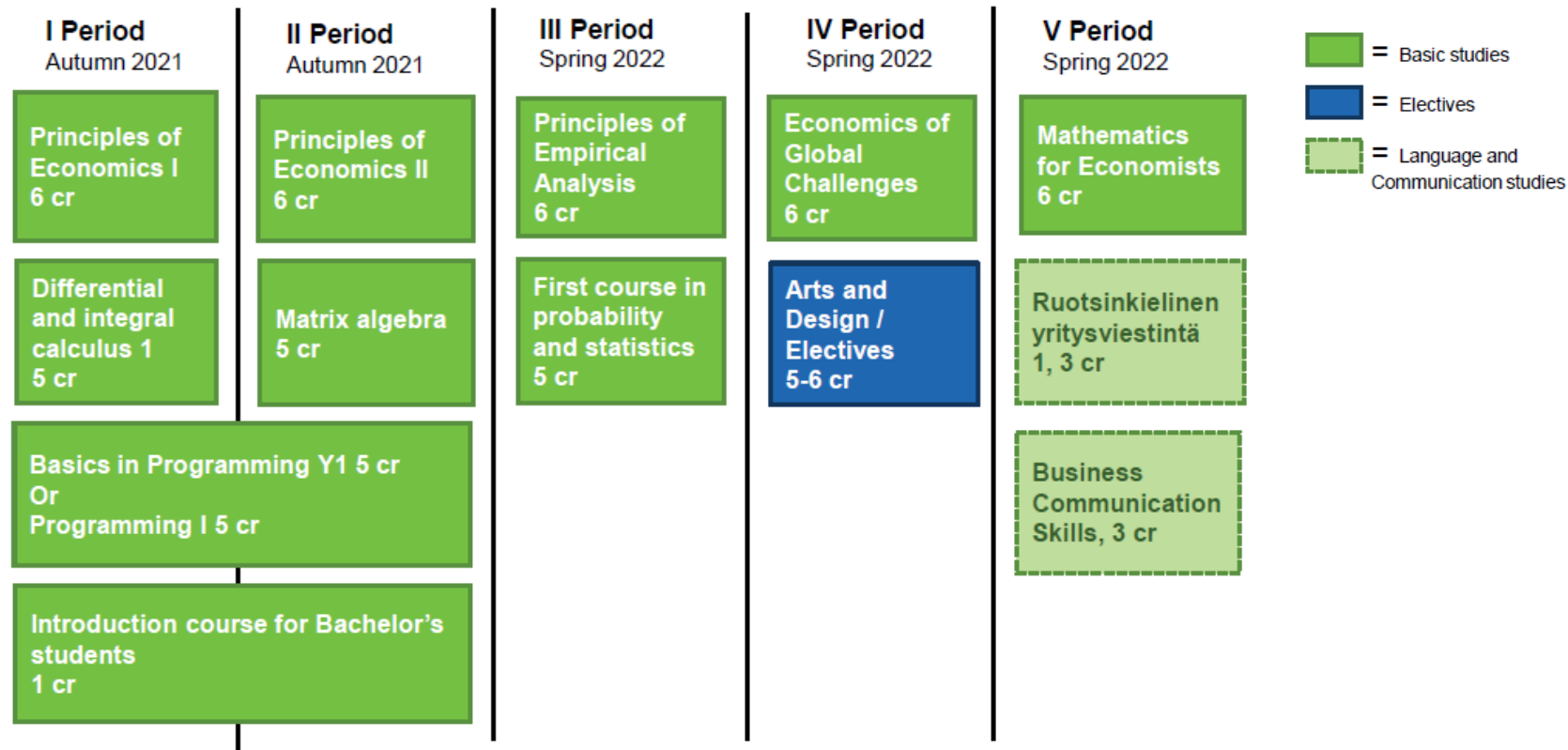
Basic Studies 51 cr
Major Studies 60 cr (includes BSc. Thesis 10 cr)
Business studies 18 cr
Minor studies (24-30 cr)
Electives (9-15 cr)
Language and communications studies (12 cr)

# Degree structure and timing of studies – 180 cr

1. Study year 60 cr					2. Study year 60 cr					3. Study year 60 cr				
I	II	III	IV	V	I	II	III	IV	V	I	II	III	IV	V
Basic studies 51 cr					Major studies 48 cr					BSc. Thesis and seminar 12 cr				
			Language studies 6 cr		Language and communication studies 6 cr					Minor studies 24/30 cr				
			Arts elective course 3-5 cr		Business studies 6 cr					Business studies 12 cr				
										Elective studies 4-10 cr/Arts elective course 3-5 cr				

**1 credit = 27 hours of work**

# Recommended studies for the first year



Recommended study timetable in Into: <https://into.aalto.fi/display/enbscecon/Recommended+study+timetable>

[into.aalto.fi](https://into.aalto.fi) > Bachelor programmes > Bachelor's Programme in Economics > Planning your studies > Recommended timetable

## 2. Studying at Aalto University



Aalto University  
School of Business

# Teaching periods & examinations 2021-22

## Autumn term 2021

Teaching and evaluation periods	Time	Week numbers
First evaluation period; orientation	6 –10 Sep 2021	36
Period I and evaluation week	13 Sep – 29 Oct 2021	37–43
Period II and evaluation week	1 Nov – 17 Dec 2021	44–50
Second evaluation period	20-23 Dec 2021	51

## Spring term 2022

Teaching and evaluation periods	Time	Week numbers
Period III and evaluation week	10 Jan 2022 – 25 Feb 2022	2–8
Period IV and evaluation week	28 Feb – 14 Apr 2022	9–15
Period V: multimodal period in which diverse forms of teaching are implemented, for example:	19 Apr – 3 Jun 2022	16–22

**Courses are lectured from Monday to Friday.**

**Online teaching:** check MyCourses for more information on teaching arrangements!

# E-tools



<https://into.aalto.fi/>

- All you need to know about your studies
- Curriculums
- Degree structures
- Contact information
- Instructions
- Academic rules and regulations



[sisu.aalto.fi](https://sisu.aalto.fi)

- Course descriptions
- Registering for courses & exams
- Course grades
- Planning of Studies: **Personal Study Plans** (PSP/HOPS)
- Official electronic transcripts



<https://mycourses.aalto.fi/>

- Course home pages
- Timetables & materials
- Course syllabus & news



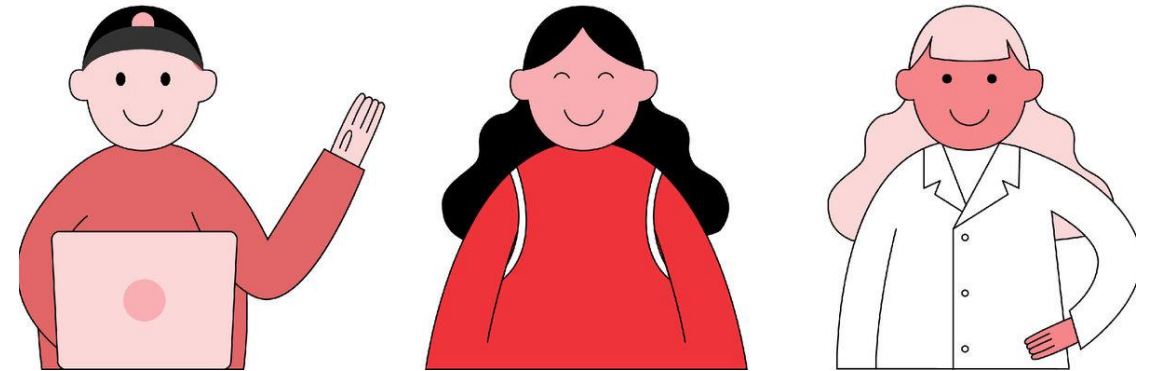
# Registering for courses and exams

- **Registration for all courses and exams in SISU (sisu.aalto.fi).**
  - Always check the registration times for each course in SISU.
- **Course registration opens 28 days before the teaching period begins.**
- **Course registrations ends:**
  - **7 days before** the teaching period begins, for courses with limited number of participants, or
  - **7 days after** the course has started, for courses with no limited number of participants.
- **Cancellation possible in SISU only when the registration is open. After the registration has closed, you can discontinue your participation.**
- **Separate registration for re-exams.**
- **Instructions: <https://wiki.aalto.fi/display/SISEN/Registration+for+courses>**

# Course registration in Sisu ([sisu.aalto.fi](https://sisu.aalto.fi))

1. Log in to Sisu at [sisu.aalto.fi](https://sisu.aalto.fi) with your Aalto username and password.
2. Create a personal study plan (HOPS)
3. Go to **Study calendar**. Choose **Teaching not selected** tab. Select completion method.
4. Go to the **Registration and teaching** tab to register for courses.
5. After registering, you will see if you can be selected to participate in the course.
6. After the registration period is over, you can check if you were selected for the course.

**Let's move forward *with Sisu***



# 3. Study guidance and counselling



Aalto University  
School of Business

# Study guidance and counselling

## Planning Officer

- Programme specific information
- Personal study plan (HOPS)
- Study consultation etc.
- Credit transfer

## Help Desk

- General study counselling
- Official transcripts of records
- Certificates of attendance
- Annual enrolment (exceptional cases)
- General study questions:  
[studentservices@aalto.fi](mailto:studentservices@aalto.fi)

## Learning Services

- International student services
- Study opportunities outside of Aalto
- Graduation etc.

## INTO

- Academic Calendar
- Study Guides
- Degree structures and contents
- Internationalisation & studies abroad
- Internal mobility and JOO studies
- Academic rules and regulations
- Services for students
- Basically all the information about studies is there!

## Professors / Teachers & Academic tutoring

- Responsible for the counselling and answering any questions regarding their own courses

# Learning services / Student counselling

- School of Business HelpDesk

Address: Ekonominaukio 1, room Y115

Email: studentservices@aalto.fi

- Planning Officer Elina Yrjänäinen

Contact information > [into.aalto.fi](https://into.aalto.fi) > *Bachelor's programme in Economics* > *Contact*

Email: elina.yrjanainen@aalto.fi

- International Student Services (If you are applying to student exchange etc.)

Email: outgoing-biz@aalto.fi

**All contact information can be found in INTO.**

# 4. Campus



Aalto University  
School of Business

## **Undergraduate Center**

Otakaari 1

- Bachelor level courses, language courses
- Learning Hub

## **Harald Herlin Learning Center**

Otaniementie 9

- Library services



## **BIZ Main building**

Ekonominaukio 1

- Departments of the School of Business
- Master's level courses
- Learning Hub
- Learning services HelpDesk

**Check updated opening hours from [Aalto.fi](https://aalto.fi)**



**Aalto University**  
School of Business

# School of Business main building

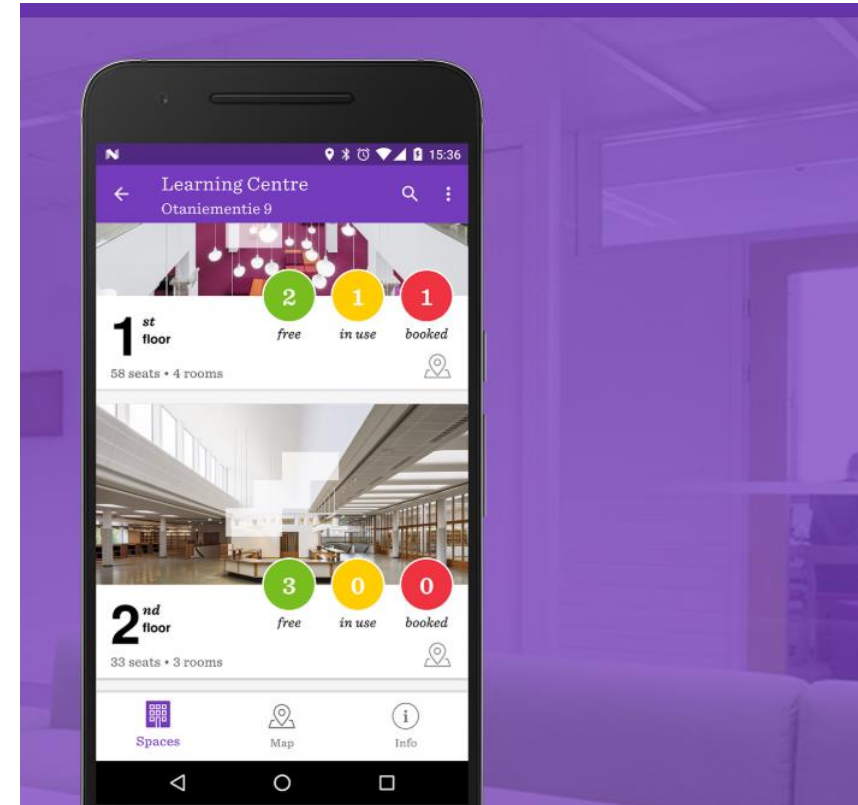
## Departments and programmes

*Ekonominaukio 1*



# Visiting the campus

- Students have access to buildings which offer contact teaching or study-related support services or have student cafeterias or bookable self-study spaces.
- Access to buildings during their opening hours through specifically marked entrances.
- **Aalto Space** helps students find and book available study locations.
  - Note! All study spaces or IT classrooms will not be available.
- **If you use the self-study spaces, remember to book a seat in advance!**



# Your contact information



Keep it always updated in SISU.



We use the Aalto Email addresses in SISU when contacting you.



Please include your student number when contacting personnel, there may be other students with the same name in the university or even in the same department.



**Aalto University**  
**School of Business**

**Thank you!**

**Questions and  
discussion**

**Enjoy the rest of the day  
& orientation!**

