

# Integrated Marketing Communications

Budgeting/Measuring/Ethics

Hedon Blakaj, 2021

Aalto University School of Business



# Defining a budget

In essence, how much you allocate to any given marketing communications function and channels

- PR, Advertising, Sponsorship... (Promo tools)
- TV, Radio... (Media)

**TABLE 1**  
**Research Propositions Concerning Likely Communication Outcomes from Different Communication Options**

Communication Outcomes	Communication Options										
	TV	Promos	Events	PR	Social Media	Website	Search	Display	Mobile	Direct	Selling
Create awareness and salience	+++	++	++	++	+++	++	+++	+++	+++	++	+
Convey detailed information	+	+	+	+	++	+++	+	+	++	+++	+++
Create brand imagery and personality	+++	++	++	++	+++	++	+	+	++	+	+
Build trust	+	+	+	+++	+++	+	+	+	++	+	+++
Elicit emotions	+++	++	+++	+++	+++	++	+	+	++	+	+
Inspire action	+	+++	+	+	+	++	+++	++	+++	+++	+++
Instill loyalty	++	+	+	+	++	++	+	+	++	++	++
Connect people	+	+	++	+	+++	+++	+	+	+++	+	+

Notes: +++ = greatest influence; ++ = medium influence; + = least influence.

Batra and Keller 2016

# Budgeting benefits

- Helps quantifying objectives and leads to measurability
- Again, a big thing in IMC
- Optimally, it really focuses people to push the campaign in the right direction
- Worst case scenario, the measure becomes too central of a node, at the detriment of other MC elements

# Budgeting strategies

- Four distinct strategies, that are not perfect but give you a sense of "what matters" when budgeting
- Different industries and businesses "lean more" towards different strategies

# “*Bad*” budgeting strategies

- Arbitrary = basically, the bosses’ guess
- Inertia = “let’s keep things the same”
- Media multiplier = “adjusted to media inflation”
  - Economic growth, media sustainability, allocation of investments within and across different media channels, buying and selling of media → impact inflation
- “we’ll budget what we had last year plus minus our current balance;”  
→ considered as the old way of doing it...

# I. Percent-of-Sales Budgeting

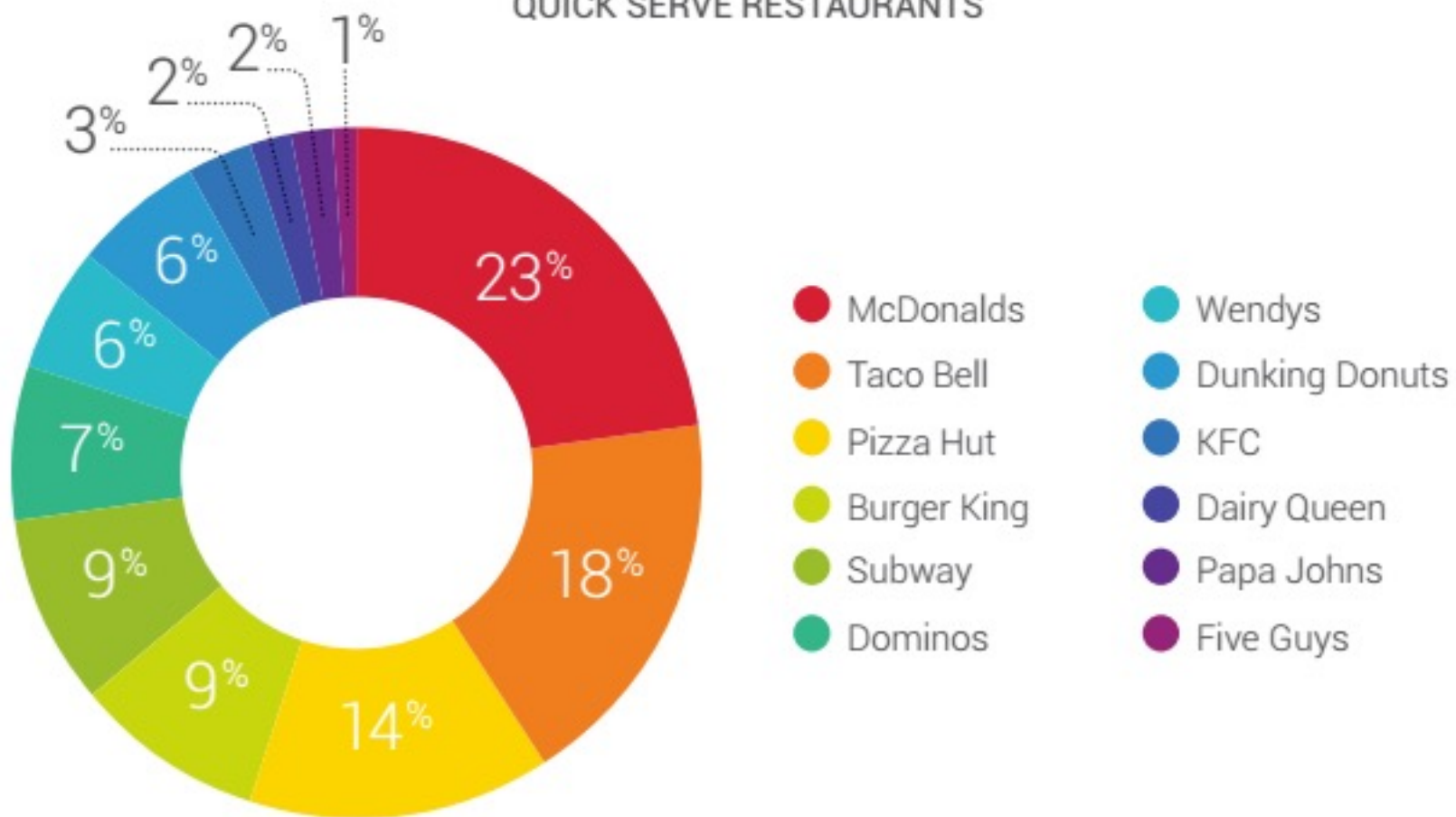
- You make a forecast of next year's sales and then define how much (%) you spend on marketing communications
- Some industries are more stable, so this approach (sort of) makes sense
- Assumes stability and unchanging marketing communications message



## II. Share-of-Voice budgeting

- Basically you budget according to your market share
- "if in product category X the overall spending on advertising is 300 million euros and our market share is 50% → 150 million budget!"

SHARE OF VOICE FOR  
QUICK SERVE RESTAURANTS



# III. Return on Investment (ROI) Budgeting

- Often a favorite for top level managers (also, other functions are usually evaluated on ROI)
- "investment in MC needs to generate X% more earnings than its costs" (objective!)
- Evaluate how much you could realistically increase sales → decide on budget (objective!)
- Tools: marginal analysis, break-even point

$$\text{ROI (\%)} = \frac{\text{Return (profit)} - \text{Investment (expense)}}{\text{Investment (expense)}} \times 100$$

OR

$$\text{ROI (\%)} = \frac{\text{Net Return/Profit}}{\text{Investment (expense)}} \times 100$$

## IV. Objective-and-Task Budgeting

- You budget according to what you agreed to achieve through each MC function:
  - PR ➔ 15% increase in brand trust/awareness...
  - Sales Promotions ➔ 10 % increase in consumer turnaround
  - ...

# Some notes on budgeting

- When launching a product (or driving a new position), the budget usually is quite high (and skewed towards awareness...)
- "Most affordable" often is more important than "the best" for any purpose of marketing communications (esp. smaller companies)

# Metrics

# Metrics and analysis

- Measurability is IMC's “great gift” and innovation for marketing communications
- IMC has evolved with measurement and analysis in mind (databases, selection of MC functions etc.)



# Measurement and analysis

- Measurement and analysis are done both in the planning stage, during the campaign, and after the campaign, with various instruments
- However: MC is always “risky” and many brand messages can never be (credibly) measured → a manager’s intuition is meaningful!



Believe in something.  
Even if it means sacrificing everything.

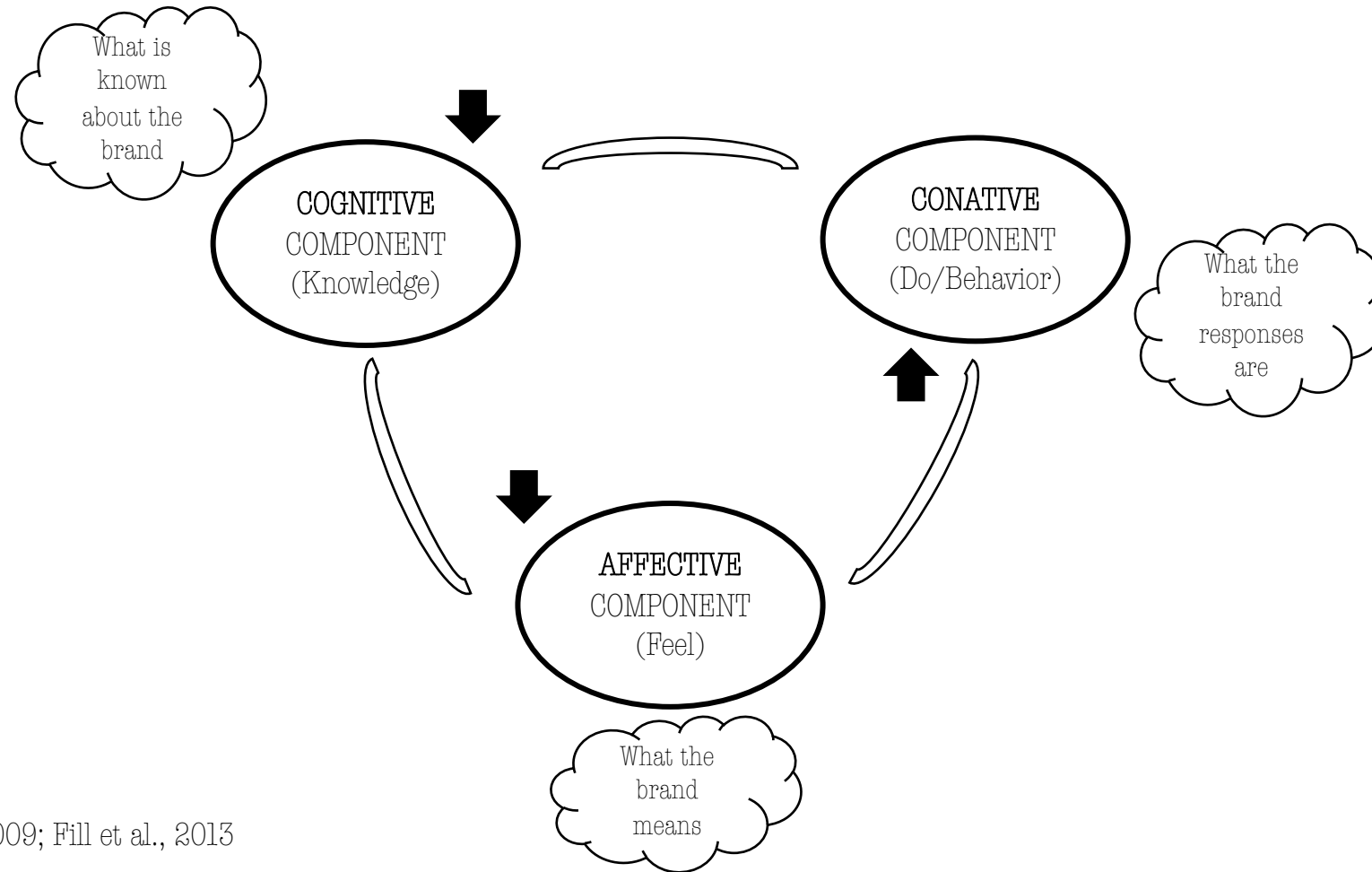
WAP



Just do it.

Bottom line: what changes  
occurred in consumers'  
behavior and attitudes

➔ Link to brand equity dimensions!



Fill 2009; Fill et al., 2013

# Data you can use

- The most obvious starting point is naturally last year's measurements and the "baseline"
- Many firms have a lot of data at their disposal that they don't even realize that it may relate to marketing communications
- Secondary data sources (Banks, Retailers, Analytics agencies...)
- Continuous flow of data harnessed through social media platforms and databases

# When to measure

- Concept testing = *measuring* those rough ideas that will become themes for a campaigns (planning stage)
- Concurrent testing = measuring during the campaign
- Evaluative testing = after the campaign, against the set goals

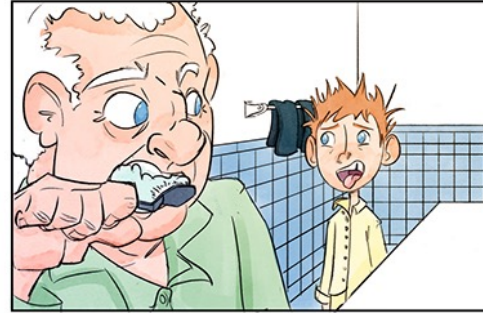
NOTE: These are rarely the same measures!

# Message Evaluation/Concept testing

- Tested before the campaign launch
- Relying on experts, focus groups, etc.



## Recall, storyboards!







# Concept testing

- **Portfolio tests**
  - Display a set of ads to an expert group
  - Including the one being evaluated
- **Theater tests**
  - Display e set ofTV ads, including the one being evaluated
- **Online tests**
  - An advancement of the two
  - Immediate results
  - Less costs
  - Analytic marketing agencies
  - Quant methods
  - Usually to a pool of experts or consumers

**Online evaluation**

- A plethora of online metrics
- Newer metrics developed almost on daily basis
- Most popular metrics:
  - *Brand awareness*
  - *Click-throughs*
  - *Redemption rate*
  - *Response rate*
  - *Dwell time*
  - *Length of engagement*

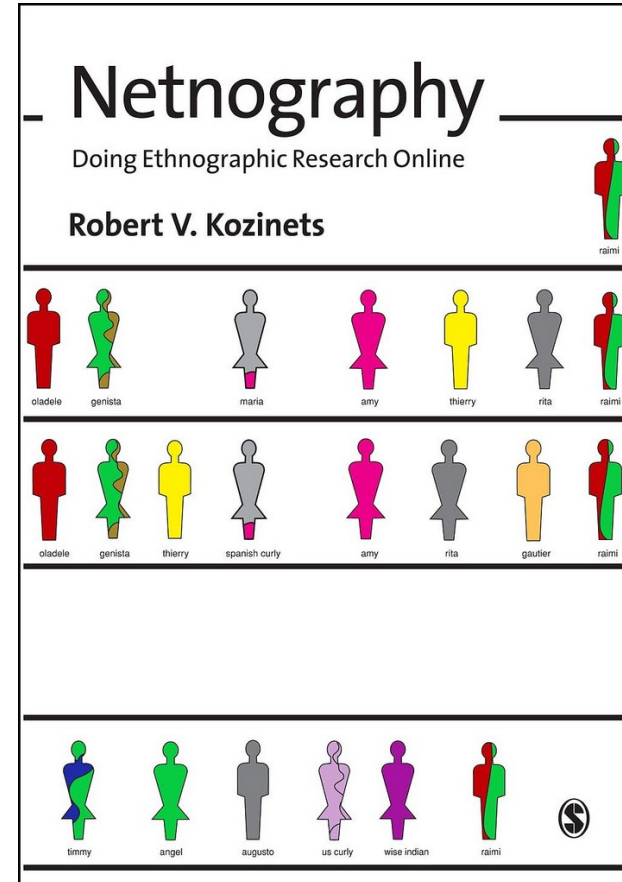
- **Brand awareness (\*\*\*)**
  - Number of visits, followers, viewers, subscribers, mentions ... (you name it)
- **Click-throughs (\*\*\*)**
  - Arguably the most popular online metric
  - Measure impact of advertisements
  - Gives an *estimate* of how many people have seen an ad, click it, and go to the website
- **Redemption rate (\*\*)**
- **Response rate (\*\*\*)**
  - Occur when visitors to the site take action → i.e. purchase or share!
- **Dwell rate (\*)**
  - Proportions of impressions consumer engages with an ad. (clicks, cursor movement on the ad)
- **Length of engagement (\*\*)**
  - How long a consumers stays at a website (Interest in the brand)

# Online and measuring...

- The Internet has increased challenges but also offers opportunities to what can be measured
- Analytics tools such as Google Analytics are indispensable now, not to mention more recent analytical techniques
- The digital footprint of consumers can tell you a lot, if you can read it
  - An expansion of new marketing firms offering data analysis

# Online and measuring

- Not well known, but increasingly important: online cultural marketing research
- Cultural studies give you rich information, but can be expensive and time consuming
- Enter netnography → faster, cheaper way of getting ethnographic data



# The benefits of measuring

- Reduces risk
- Makes for better planning and control of MC → MC held financially accountable
- Sets clear control points that you can react to (*can be problematic*)
- Usually involves documentation → helps decision making in the coming years



# Measurement limitations

- Costly
- Time consuming
- Validity
  - Is the conclusion methodologically consistent/accurate
  - Criteria by which measurements are evaluated
- Generalizability
- Stifles creativity
- Overdependence on research and numbers
- “If you can’t measure it, then we won’t do it”

# Measurement challenges

- You also have to measure your measurements
- The campaign might be a home run, but what if customer service or production has hiccups?
- Competitor movements nearly impossible to “clean” from data

# Measurement challenges

- Metrics need constant tinkering!
- **E.g., what happens if an element of the campaign suddenly changes during a campaign?**
- And of course, do you need to tinker the actual campaign itself to correct this?

E.g., what happens if an element of the campaign suddenly changes during a campaign?

**Benchmarks** relative to campaign performance over time.  
Help compare new campaign against previous ones

**Tracking** metrics to help understand when campaign  
“ware out” starts to occur

# At year's end?

- There are no clear guidelines to evaluating “what went wrong” after a 12 month campaign, usually it's pretty clear during the campaign already
- Documenting the process, mistakes, lessons learned etc. ➔ learning organization
- But again, the next cycle should start from “zero” again

# Summary

- Measuring is important
- But it's also hard, and it's costly
- Remember: behaviors and attitudes and link to brand equity
- Try to be adaptive, and constantly tinker

Selected references:

(Fill 2009; Clow and Baack, 2015)

# ETHICS

# Ethics

- **Overselling**
- Exploitation of vulnerable groups
- **Deception**
- Misuse of lists
- Intruding privacy
- **Promoting negative racial, sexual or gender stereotypes**
- ...
- (Hackley and Hackley, 2015)

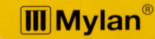




Better Health  
for a Better World®

*Rx only.*

Each carton contains: **Two yellow EpiPen®** **One grey Trainer**  
Auto-Injectors



The image shows three insulin pens lying horizontally. The pen on the left is white with blue caps and is labeled 'TRAINER'. It has a large black label with white text that reads: 'NO MEDICINE NO NEEDLE NO NEEDLE by straight out or out of it. FOR PRACTICE ONLY'. Below this, there are three numbered steps with illustrations: 1. Pull off blue safety release. 2. Swing and firmly push orange tip against outer thigh so it clicks. HOLD on thigh 10 seconds to simulate drug delivery. 3. Tip extends after use. The two pens on the right are orange with orange caps and are labeled 'PEN' and 'INJECTOR'. They have smaller labels with text like '0.3 mg', '0.5 mg', '1 mg', '2 mg', '3 mg', '4 mg', '5 mg', '6 mg', '7 mg', '8 mg', '9 mg', '10 mg', '11 mg', '12 mg', '13 mg', '14 mg', '15 mg', '16 mg', '17 mg', '18 mg', '19 mg', '20 mg', '21 mg', '22 mg', '23 mg', '24 mg', '25 mg', '26 mg', '27 mg', '28 mg', '29 mg', '30 mg', '31 mg', '32 mg', '33 mg', '34 mg', '35 mg', '36 mg', '37 mg', '38 mg', '39 mg', '40 mg', '41 mg', '42 mg', '43 mg', '44 mg', '45 mg', '46 mg', '47 mg', '48 mg', '49 mg', '50 mg', '51 mg', '52 mg', '53 mg', '54 mg', '55 mg', '56 mg', '57 mg', '58 mg', '59 mg', '60 mg', '61 mg', '62 mg', '63 mg', '64 mg', '65 mg', '66 mg', '67 mg', '68 mg', '69 mg', '70 mg', '71 mg', '72 mg', '73 mg', '74 mg', '75 mg', '76 mg', '77 mg', '78 mg', '79 mg', '80 mg', '81 mg', '82 mg', '83 mg', '84 mg', '85 mg', '86 mg', '87 mg', '88 mg', '89 mg', '90 mg', '91 mg', '92 mg', '93 mg', '94 mg', '95 mg', '96 mg', '97 mg', '98 mg', '99 mg', '100 mg'. The white pen is labeled 'TRAINER' and the orange pens are labeled 'PEN' and 'INJECTOR'.

- Increase in price by 500 %
- 600 USD for a pack of two EpiPen adrenaline shots
- From 50 USD at one point to 600 USD!

# ANAPHYLAXIS FOR REEL™

YOU ARE HERE: [HOME](#)

***Anaphylaxis: For Reel™*** was an effort to bring national attention to the serious and unpredictable nature of anaphylaxis, a life-threatening allergic reaction. The initiative aimed to inspire greater understanding about the risks of anaphylaxis through films featuring real-life, everyday stories about potentially life-threatening (severe) allergies.





sarahjessicaparker  
30 Rockefeller Plaza

Follow

44.4k likes

15w

sarahjessicaparker One stop among many. Happily spent my week talking about #AnaphylaxisForReel, an initiative encouraging people managing potentially life-threatening (severe) allergies to share their story through the power of film. Honored to be involved and to share my own family's story of dealing with food allergies as a #spokesperson of Mylan. To learn more and submit your story, go to [www.Anaphylaxis101.com](http://www.Anaphylaxis101.com). X, SJ PS. Hello and goodbye to @billybush as he prepares for the @todayshow!

[view all 334 comments](#)

asma2016ok Je t'adore 🙏🙏🙏 I'm morrocan


e.ibrahim\_ 💜💜💜

magdalena\_siwon You're the best 💕

vikes.today @ct1182 it is her real acct, it has the check mark next to her name

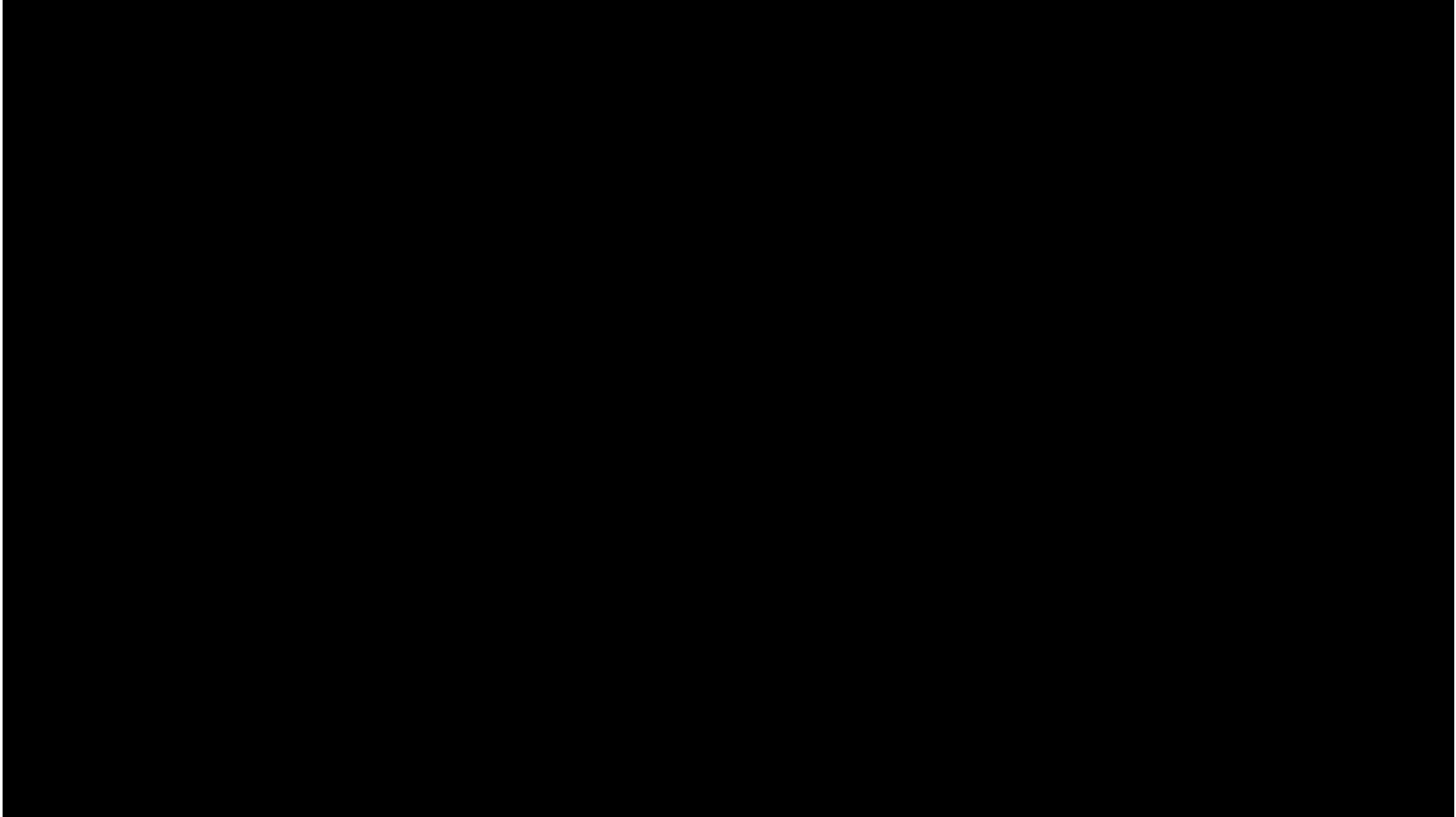
[Log in to like or comment.](#)

...



“There is still so much more we can do to help the millions of people who are at risk for anaphylaxis, a life-threatening allergic reaction.”

ANAPHYLAXIS  
.....FOR REEL™





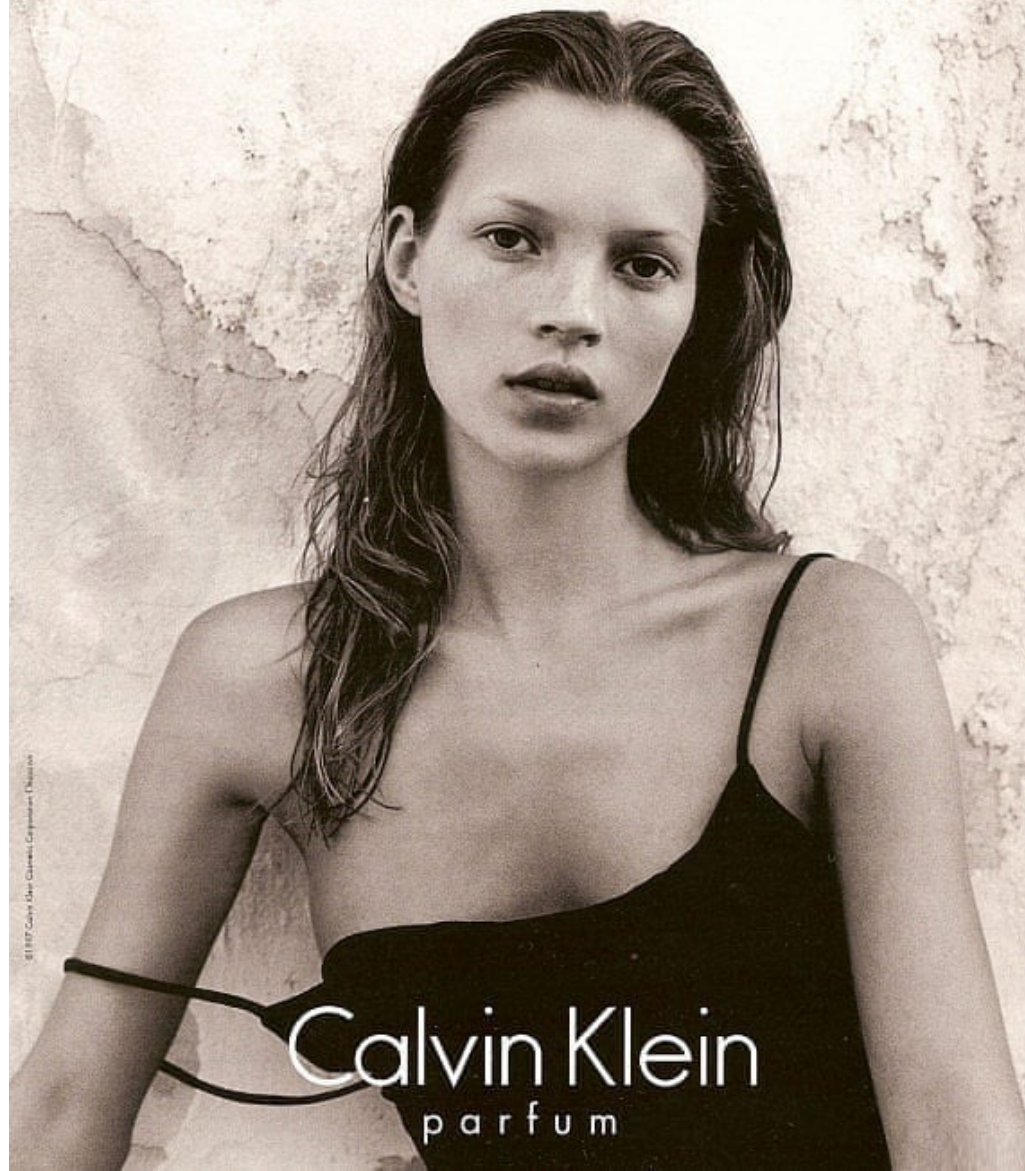




Promoting negative racial, sexual or gender stereotypes



# OBSESSION



© 1997 Calvin Klein Company, Inc.

Calvin Klein  
parfum

Deception

**CAUTION**

**MASS  
CONFUSION**







*"DanActive helps prevent colds and flu and one daily serving of Activia could relieve irregularity" and "it helps with slow intestinal transit time"*

- FEDERAL TRADE COMMISSION (consumer protection agency in the USA)
- Consumer complaints about misleading claims about Activia
- Dannon had to pay 45 million USD in fines

**THE END...**