

Abstract geometric lines in the top left corner, consisting of several overlapping, irregular polygons and lines that create a complex, layered pattern.

WOOD ARCHITECTURE DESIGN STUDIO ASSIGNMENT 2B

**General Principles, Requirements and Guidelines for
a Living Space (wood) – Final Compilation.**

Group 1 - Antti Lappalainen, Michael Ekka, Zulunankaer Tuerxun,
Ekaterina Pushkina, Patrick Bundschuh, Jie Wu

GENERAL PRINCIPLES & GUIDELINES



**Easy to Maintain and Build
CLT Structure**



**Proper Management of
Resources**



**Try Creating 2
Different/Unique Views**



**Space Incorporating
Quality**

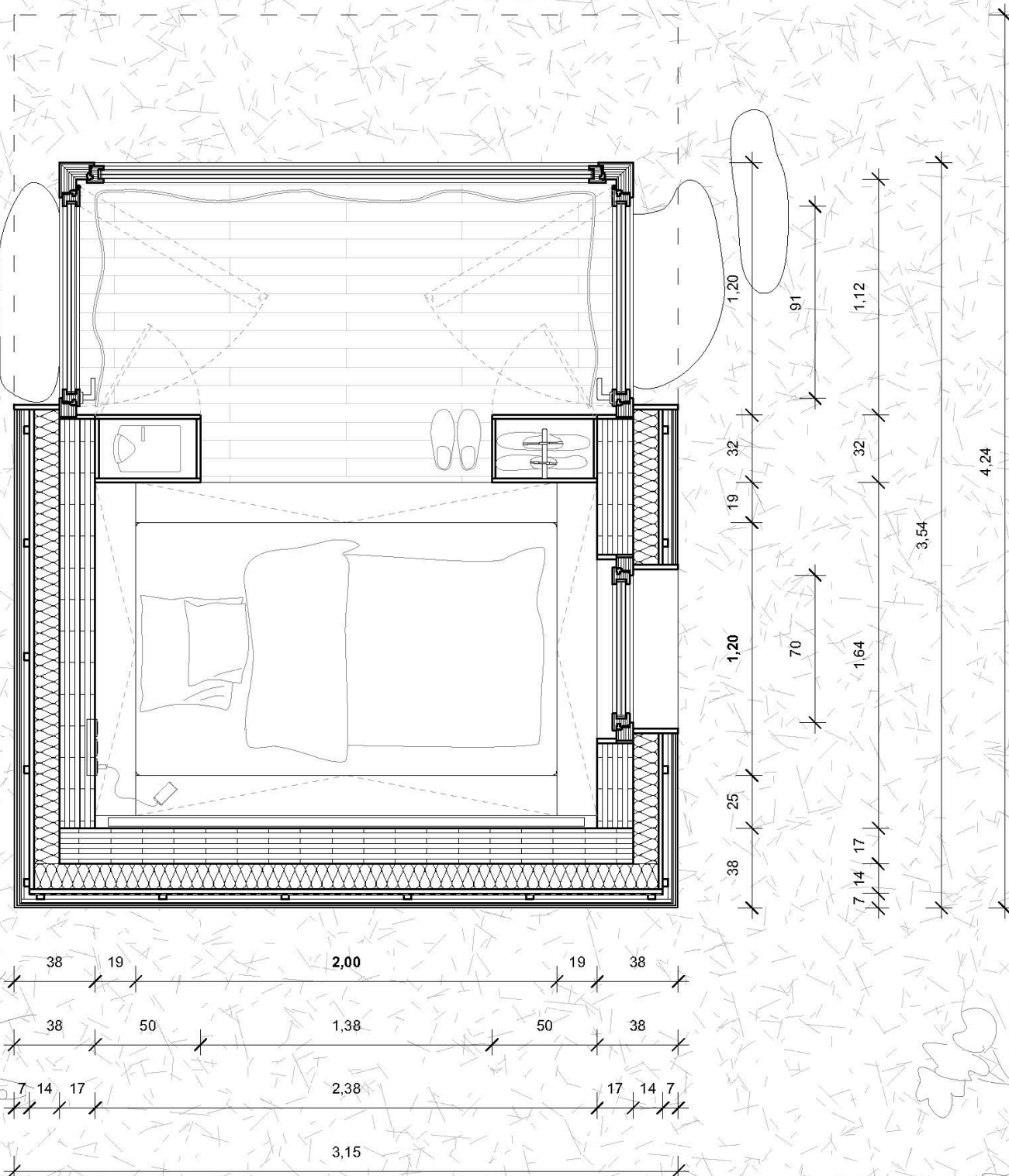


**Spaces Fulfilling
Functional/Aesthetic Needs**

DEFINING PLACES AND NEEDS OF THE FUNCTIONS

SLEEPING/ RESTING	CLEANING / SELFCARE	COOKING / DINING	WORKSPACE	LIVING, SOCIAL & HOBBY	EATING
<p>Place for extended periods of rest and rejuvenation.</p> <p>Patrick</p>	<p>Place for refreshing, washing up and getting ready.</p> <p>Ekaterina</p>	<p>Place for creating and developing sustenance.</p> <p>Antti</p>	<p>Place catering to usual work-related functions, hobbies and/or creative outlet.</p> <p>Jie</p>	<p>A place connecting various other functions.</p> <p>Can be used for work, rest, recreation, interaction and more.</p> <p>Zulu</p>	<p>Place catering to eating and related uses.</p> <p>Michael.</p>

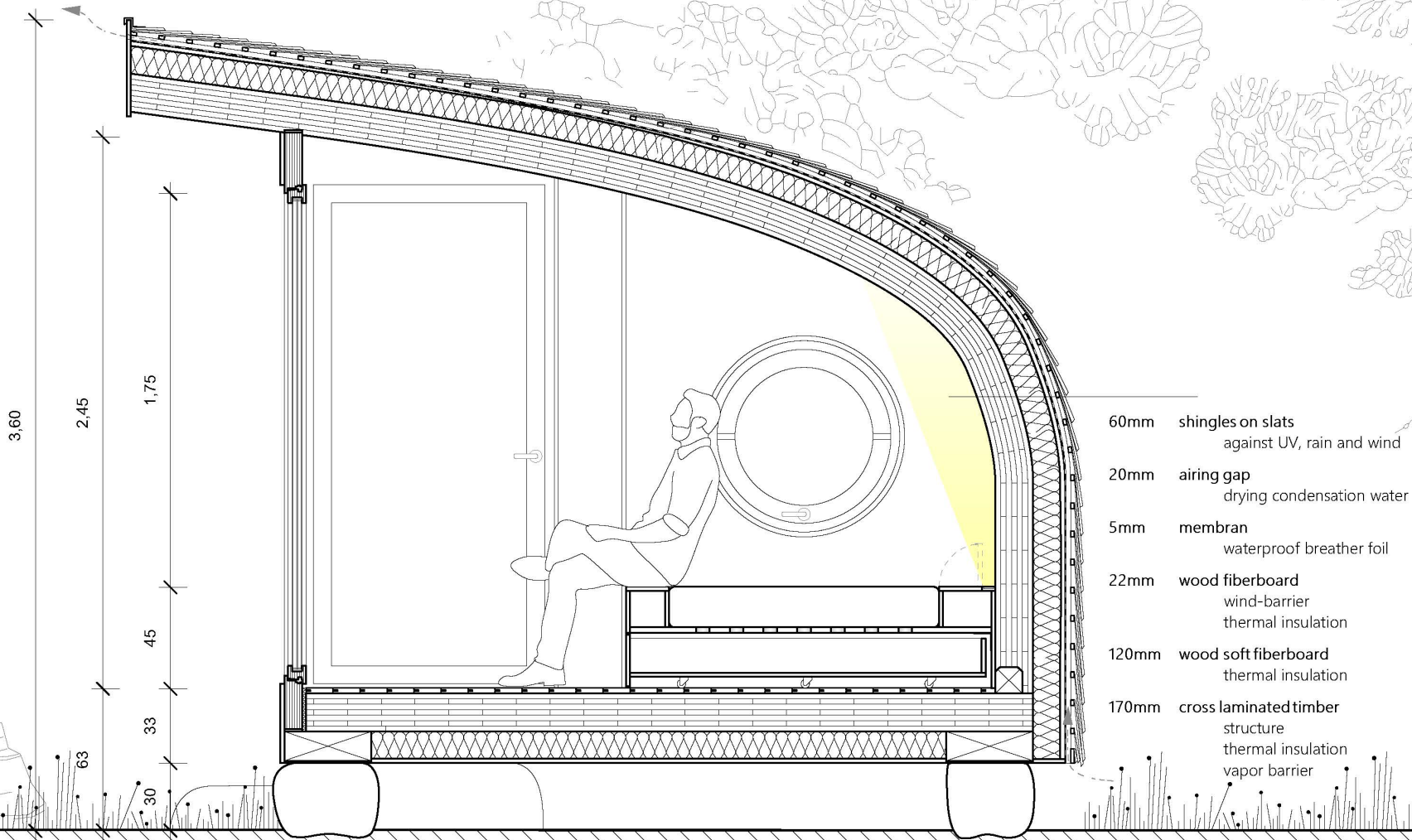
sleeping
& resting



PLAN 1:25



sleeping
& resting

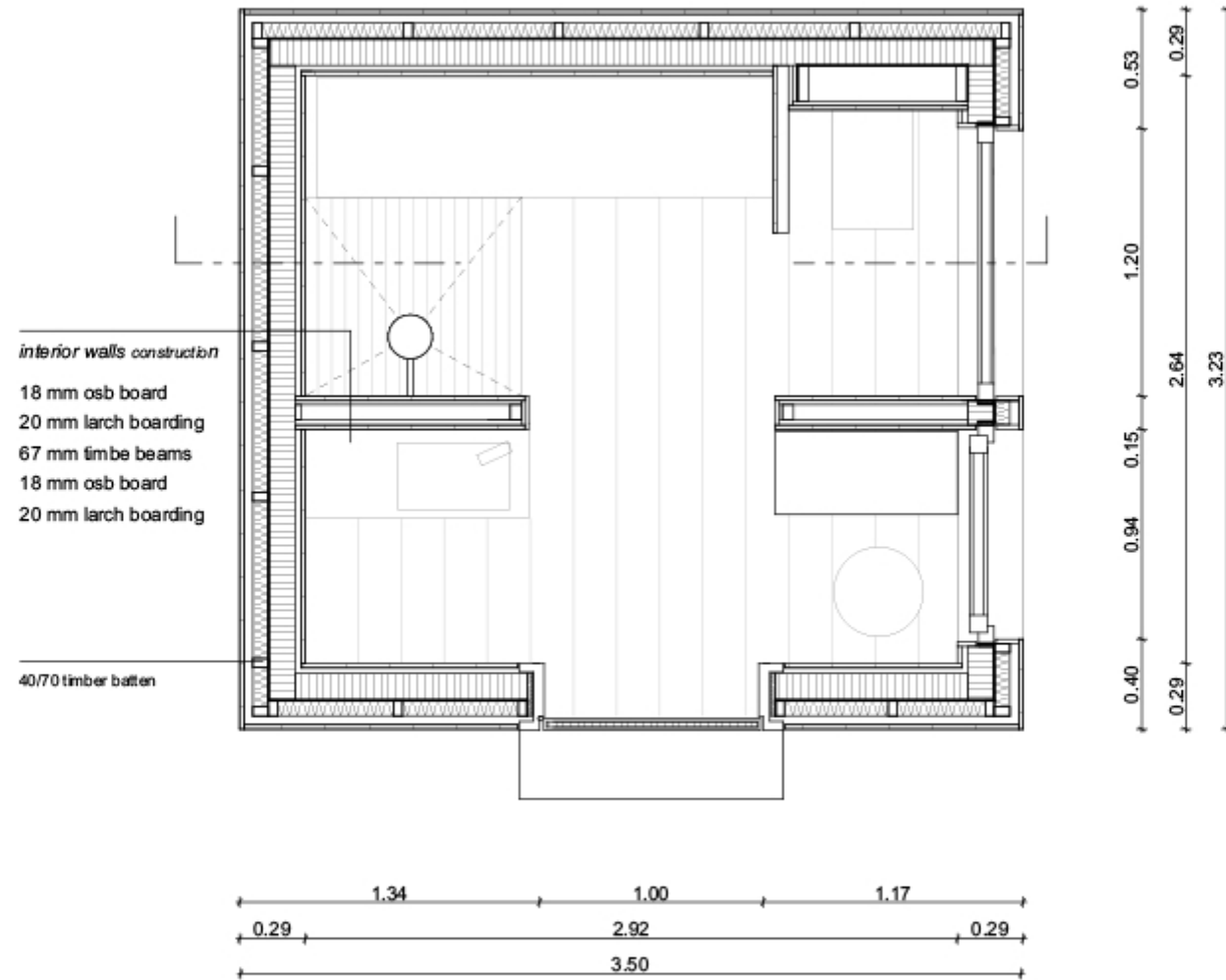


SECTION 1:25

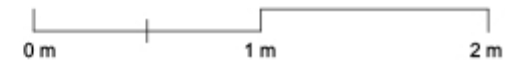
CLEANING/SELFCARE SPACE



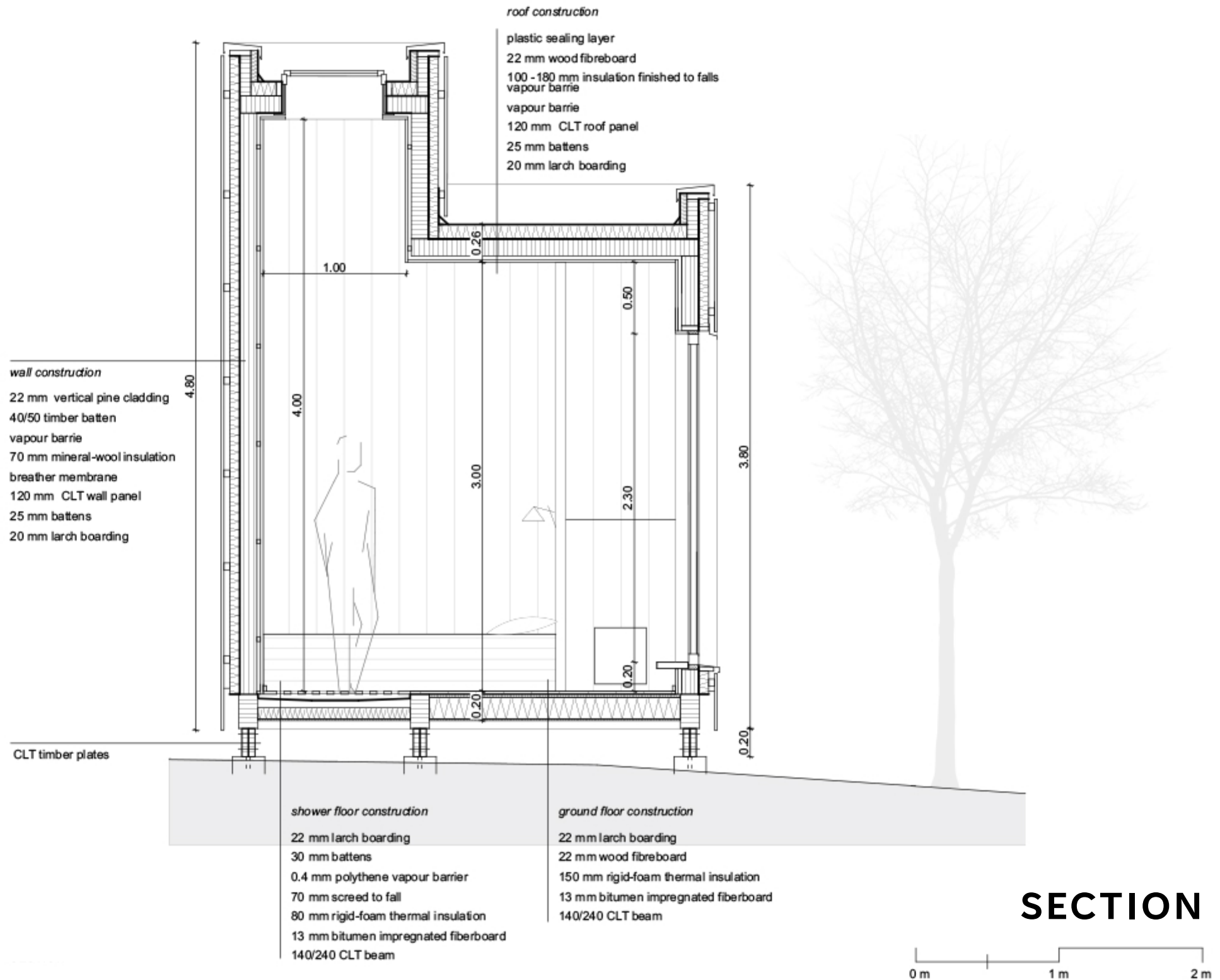
CLEANING/SELFCARE SPACE



PLAN

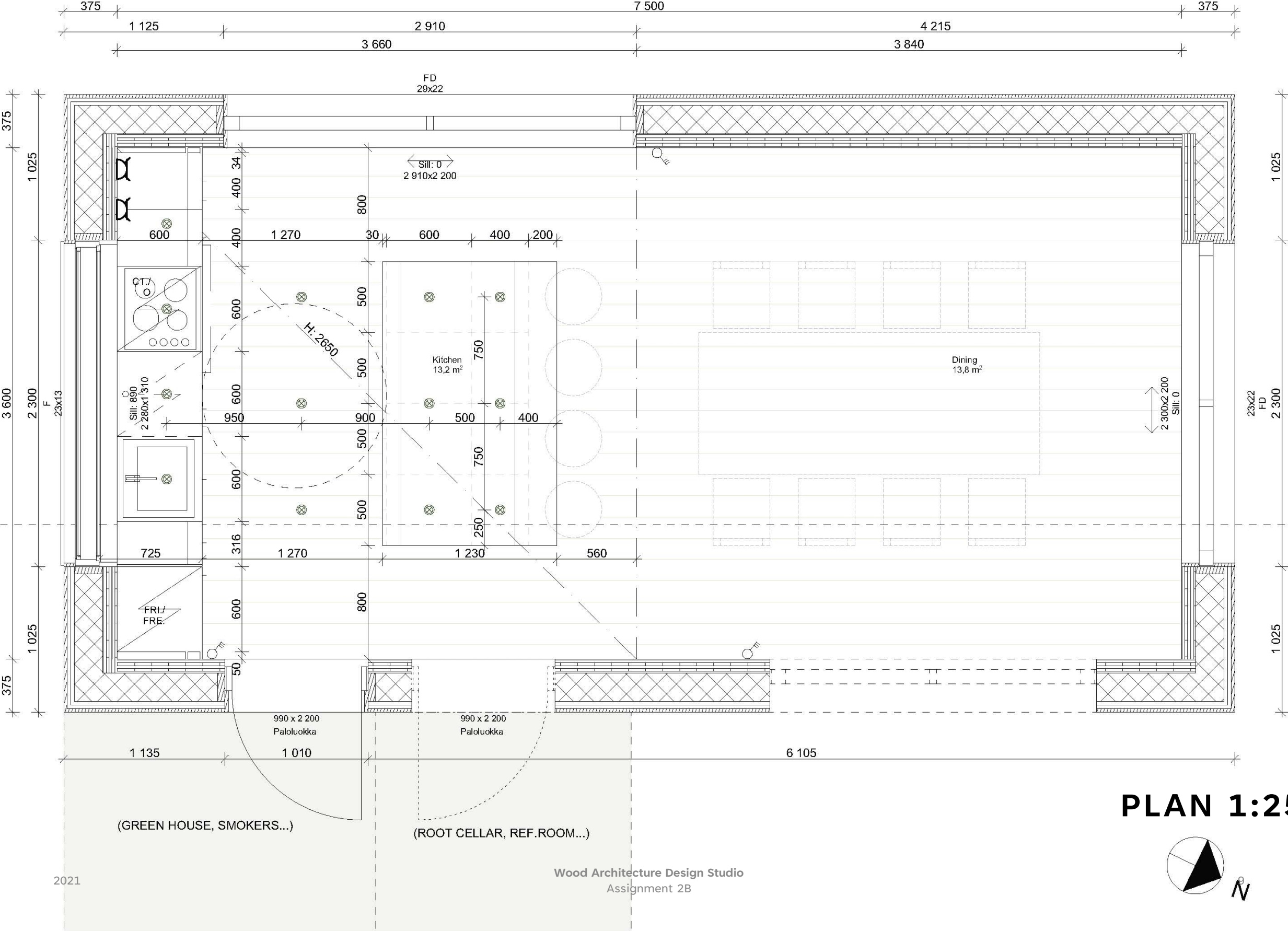


CLEANING/SELFCARE SPACE



SECTION

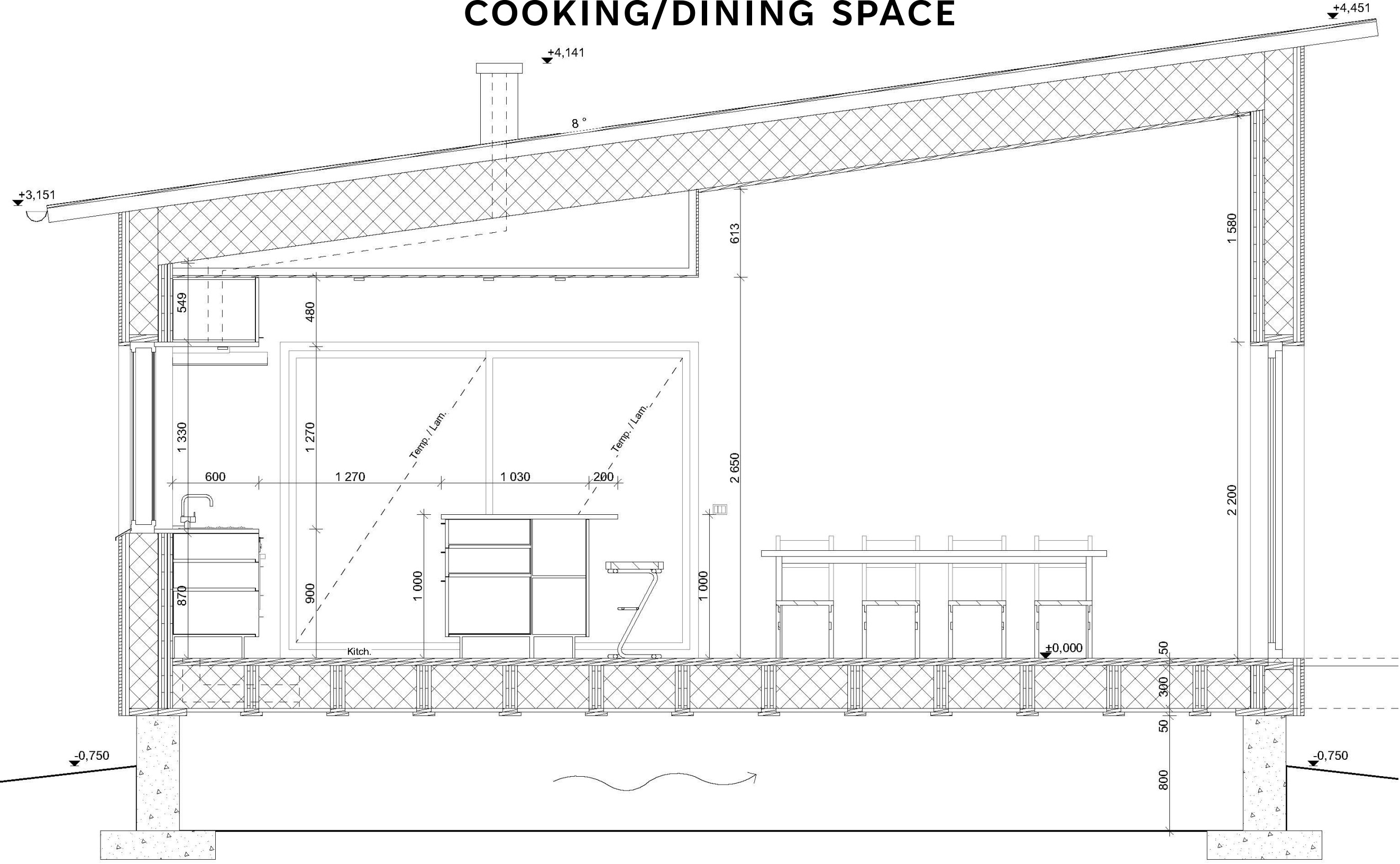
COOKING/DINING SPACE



PLAN 1:25

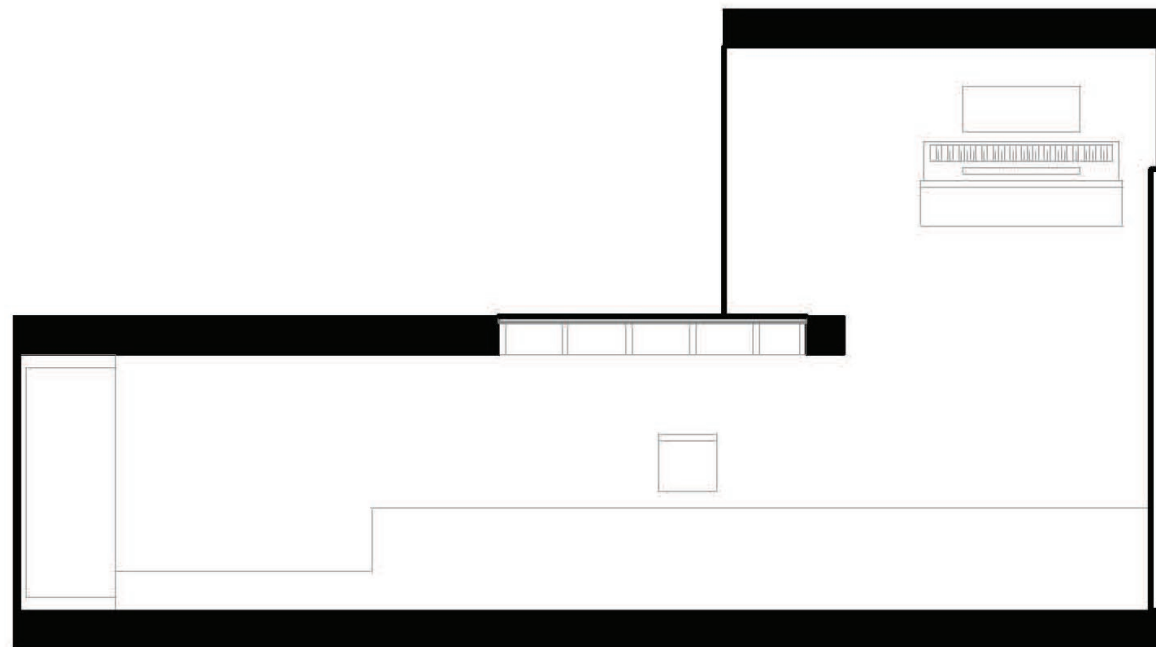


COOKING/DINING SPACE



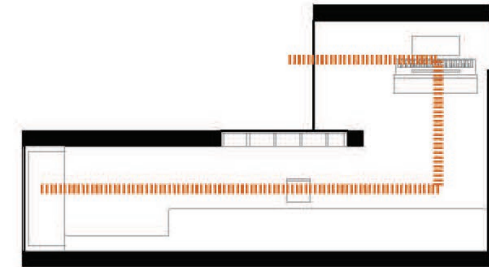
SECTION 1:25

WORKSPACE – PLANNING IDEAS

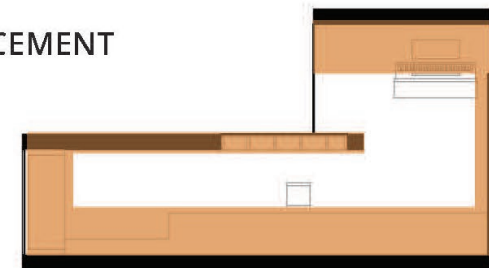


Floor Plan 1:50

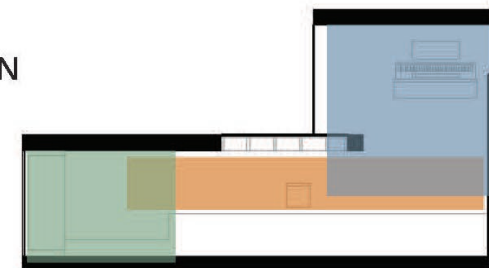
ROUTE



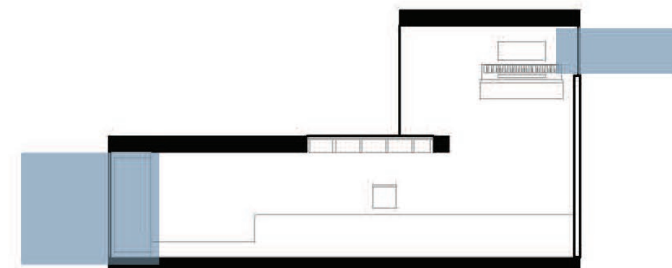
FURNITURE PLACEMENT



SPACE VARIATION



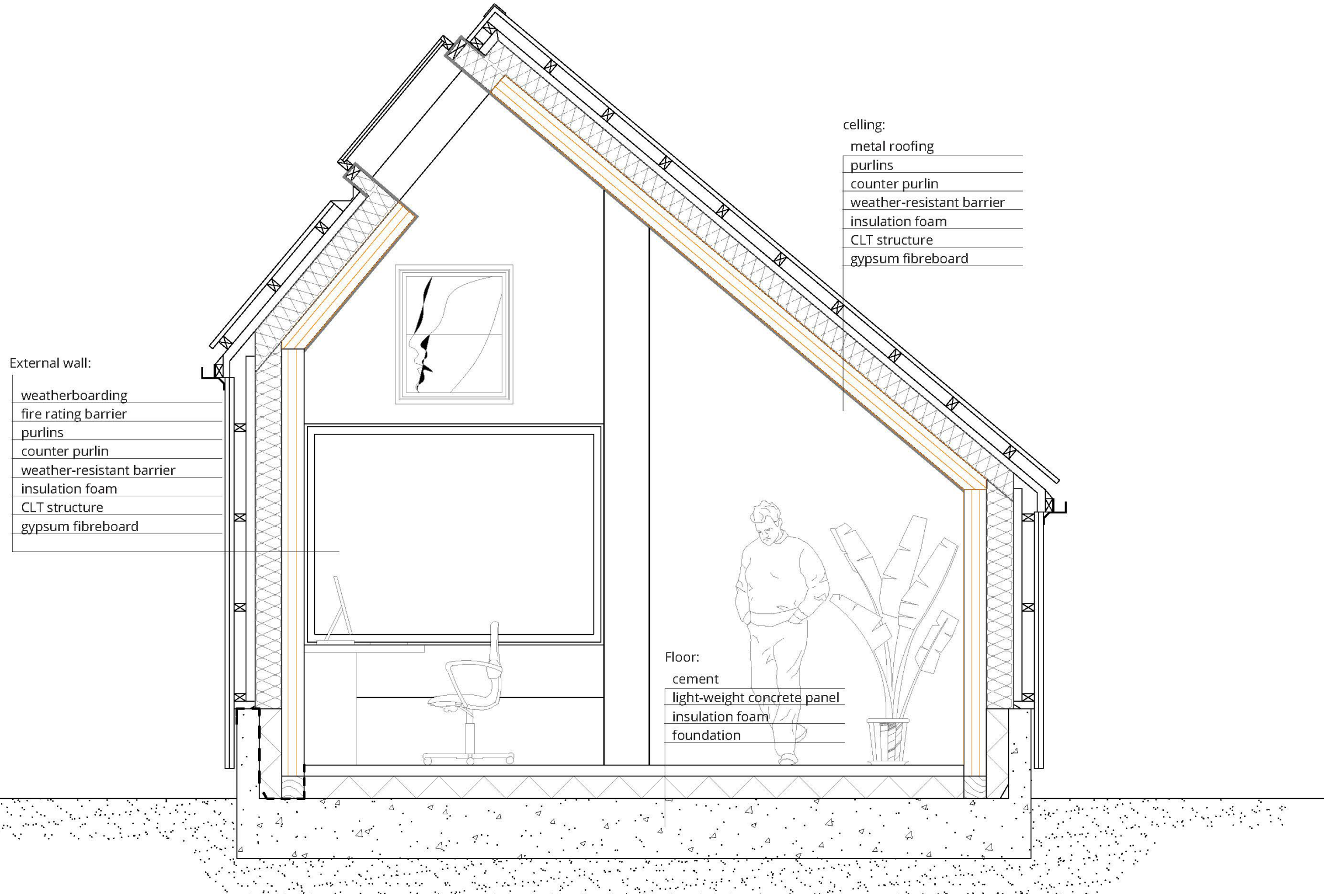
VIEWS



WORKSPACE – SPATIAL QUALITY



WORKSPACE



- External wall:
- weatherboarding
 - fire rating barrier
 - purlins
 - counter purlin
 - weather-resistant barrier
 - insulation foam
 - CLT structure
 - gypsum fibreboard

- ceiling:
- metal roofing
 - purlins
 - counter purlin
 - weather-resistant barrier
 - insulation foam
 - CLT structure
 - gypsum fibreboard

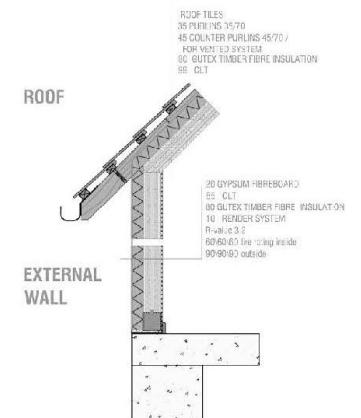
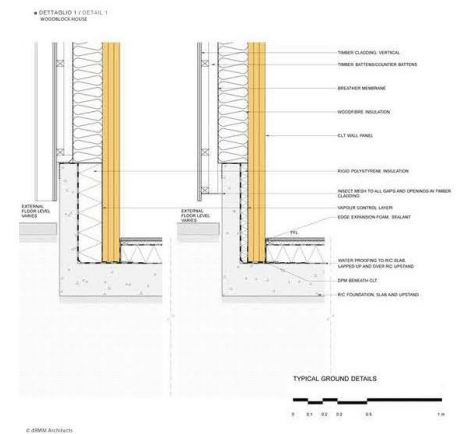
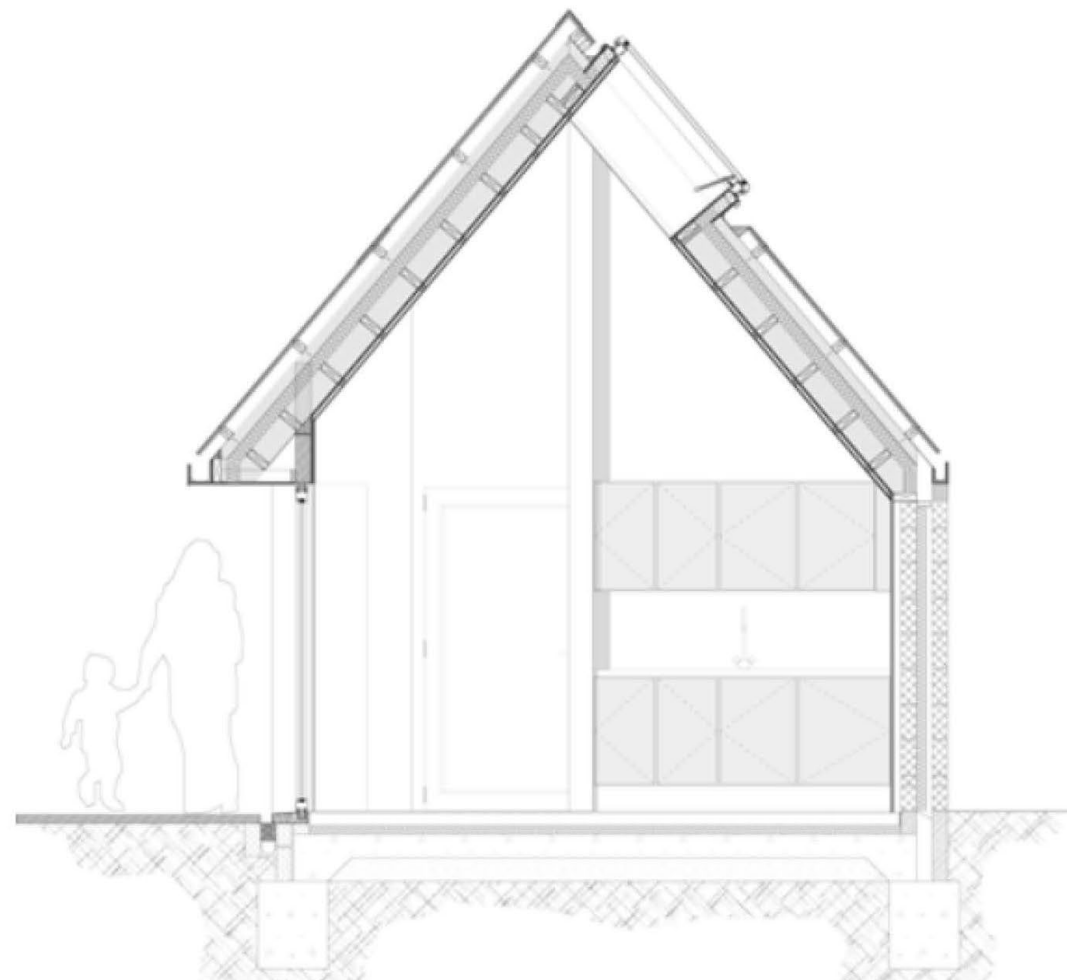
- Floor:
- cement
 - light-weight concrete panel
 - insulation foam
 - foundation

SECTION 1:25

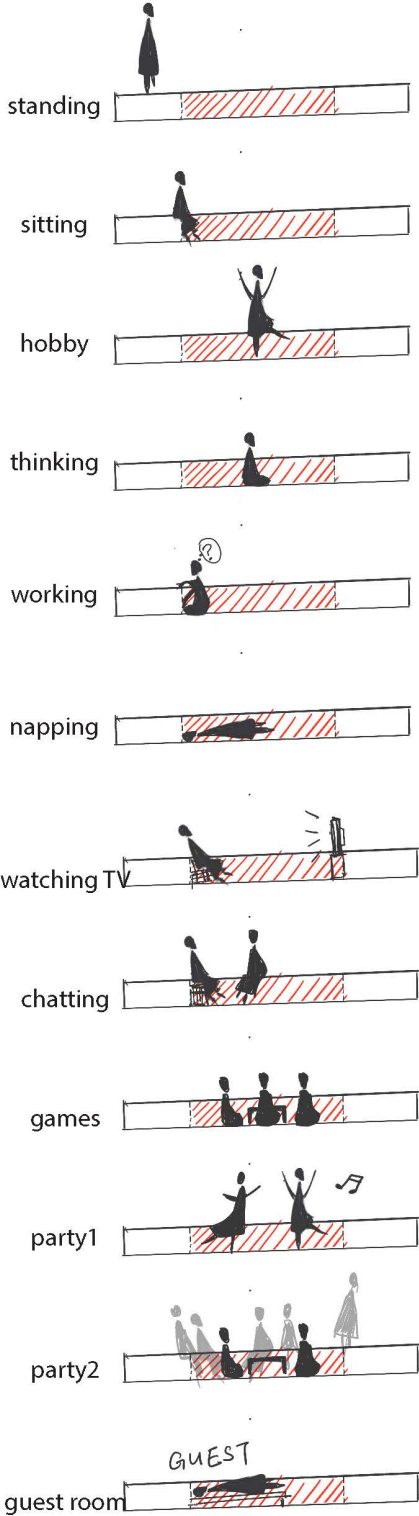
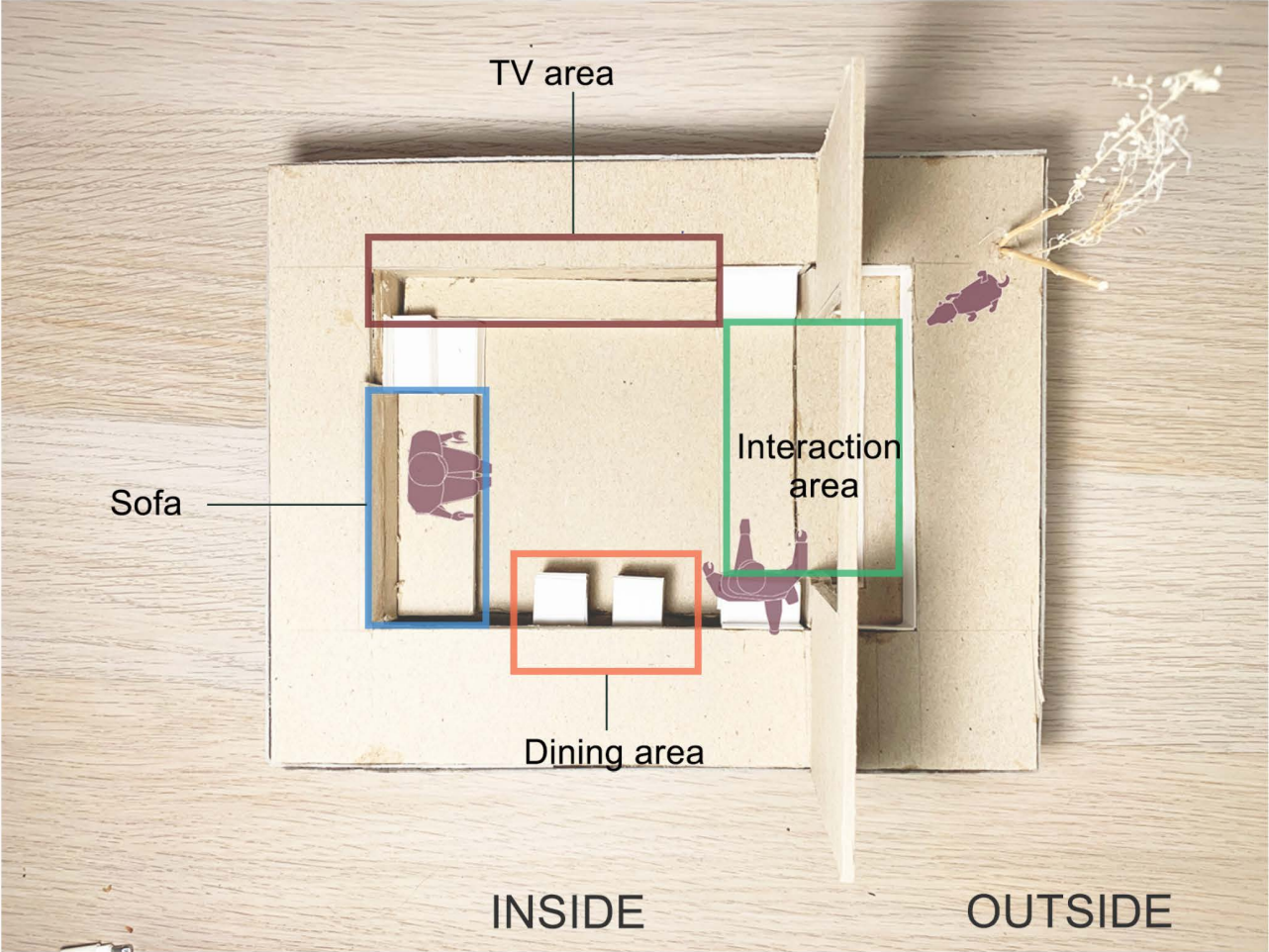
WORKSPACE - REFERENCES

REFERENCE

1. PRIMARY SCHOOL GATEHOUSE
<https://www.dezeen.com/2014/03/20/wilberforce-primary-school-gatehouse-jonathan-tuckey-design/amp/>
2. CLT Construction
www.crosslamtimber.com.au
3. El Croquis
4. Graphic Anatomy Atelier Bow-wow



LIVING SPACE – CONCEPT



LIVING SPACE – VIEWS

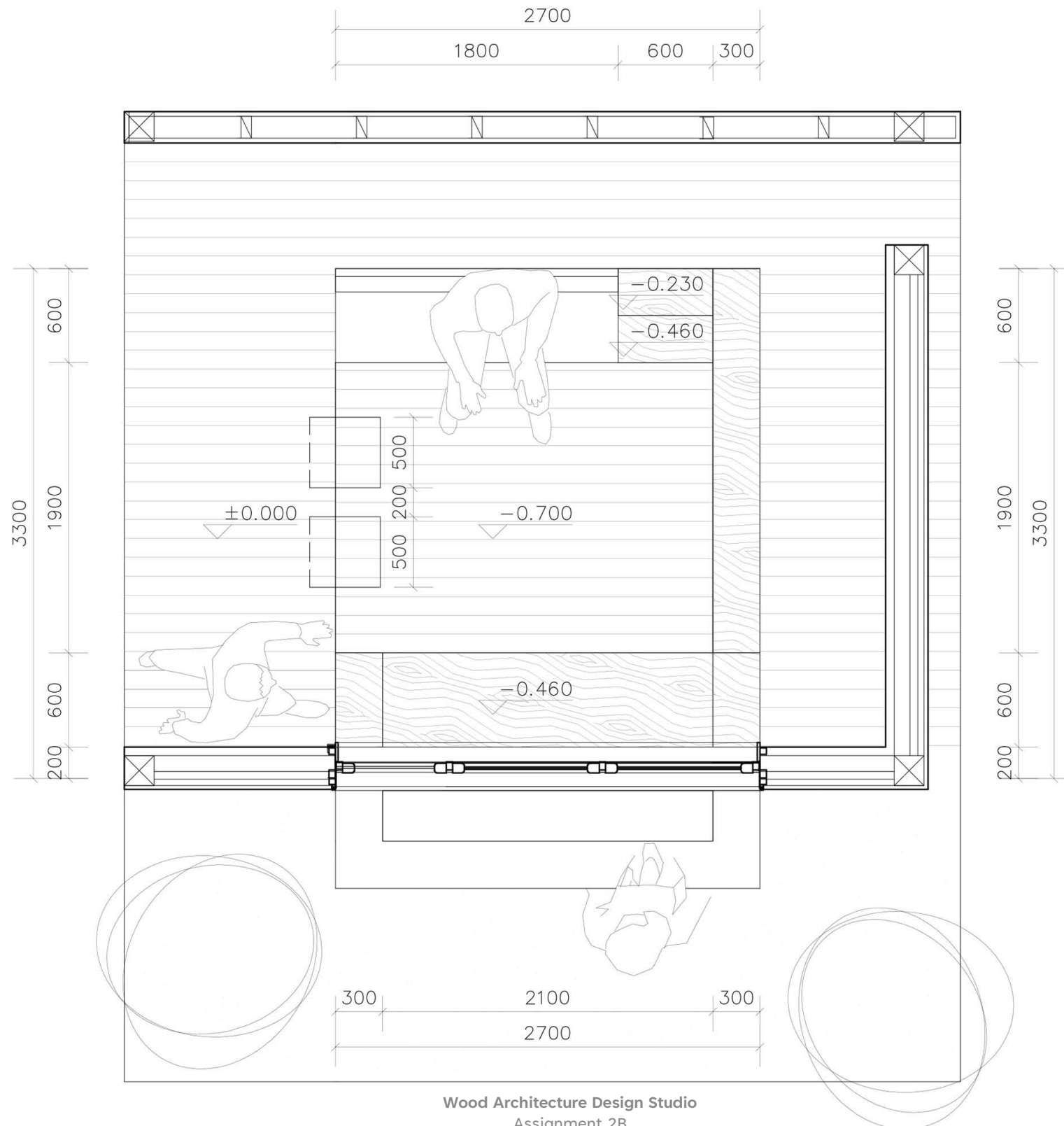


View from inside



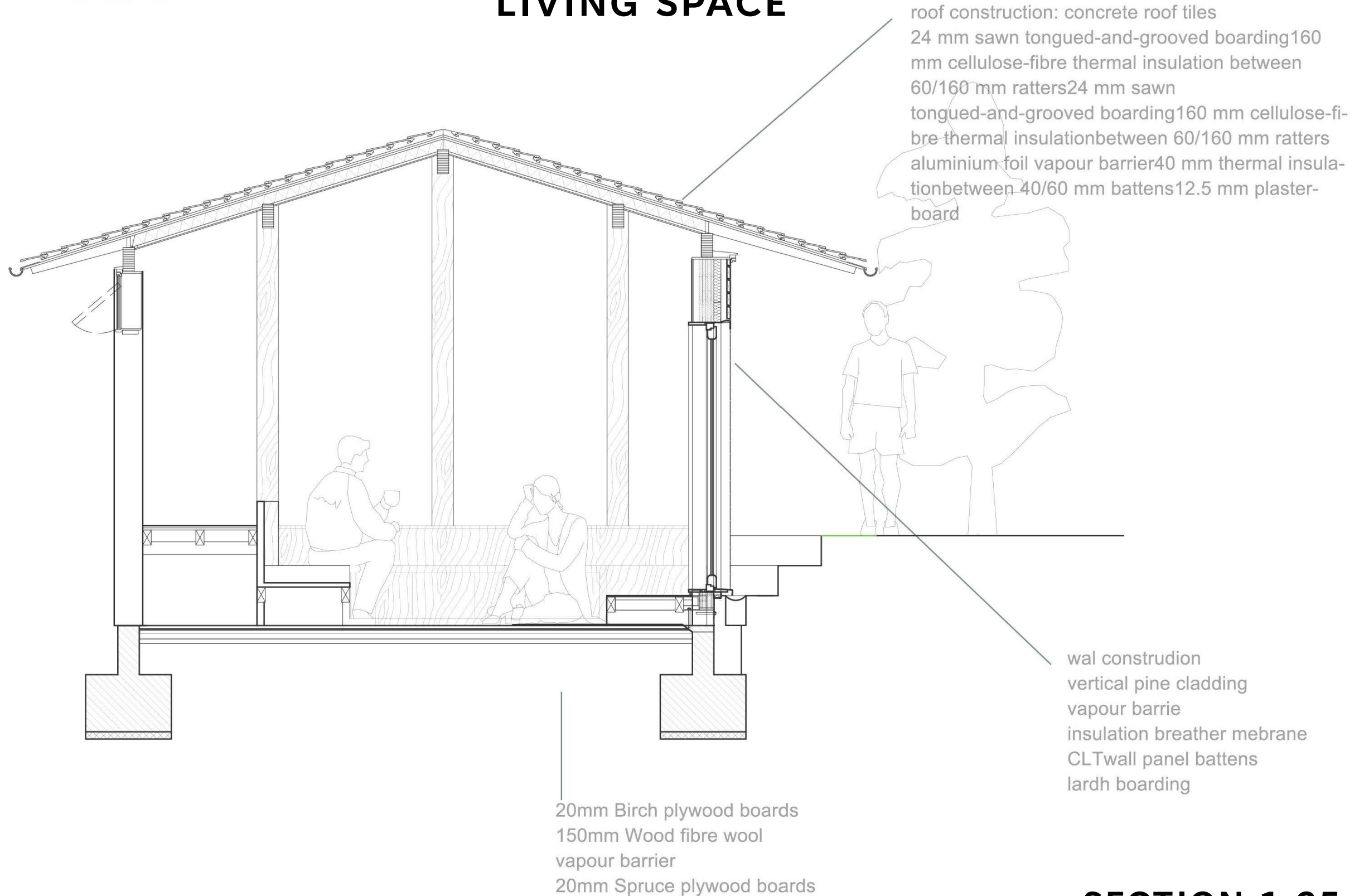
View from outside

LIVING SPACE



PLAN 1:25

LIVING SPACE



SECTION 1:25

EATING SPACE – CONCEPTUAL IDEAS



Shareable Space



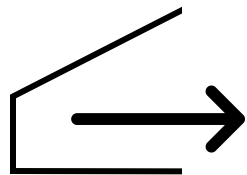
Convertible



Expandable



Multiple Usage Positions
Eating, Discussion, Snack or
Hobby



**Visual/Spatial
Expanse**

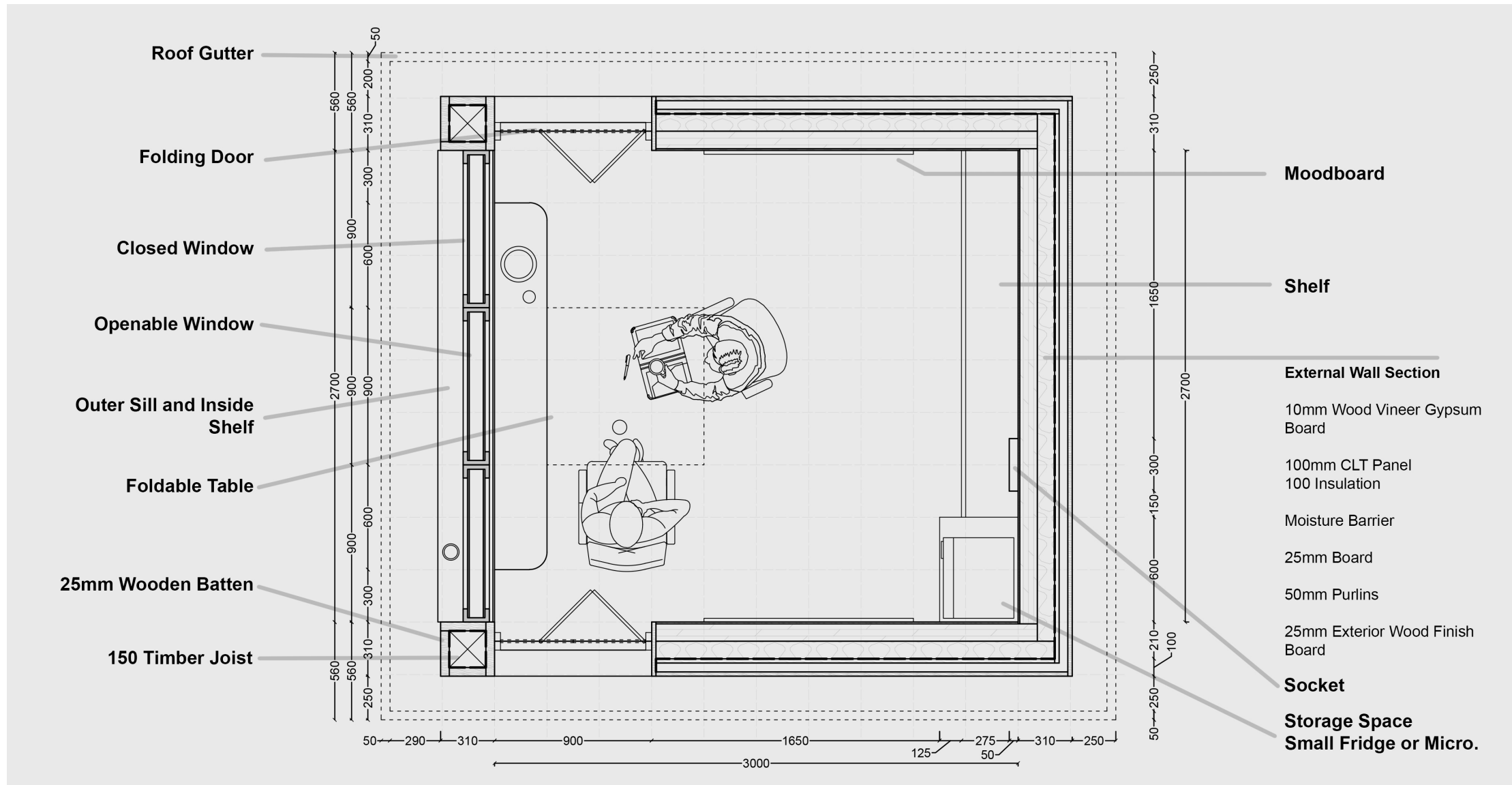


**Incorporates
Daylight**



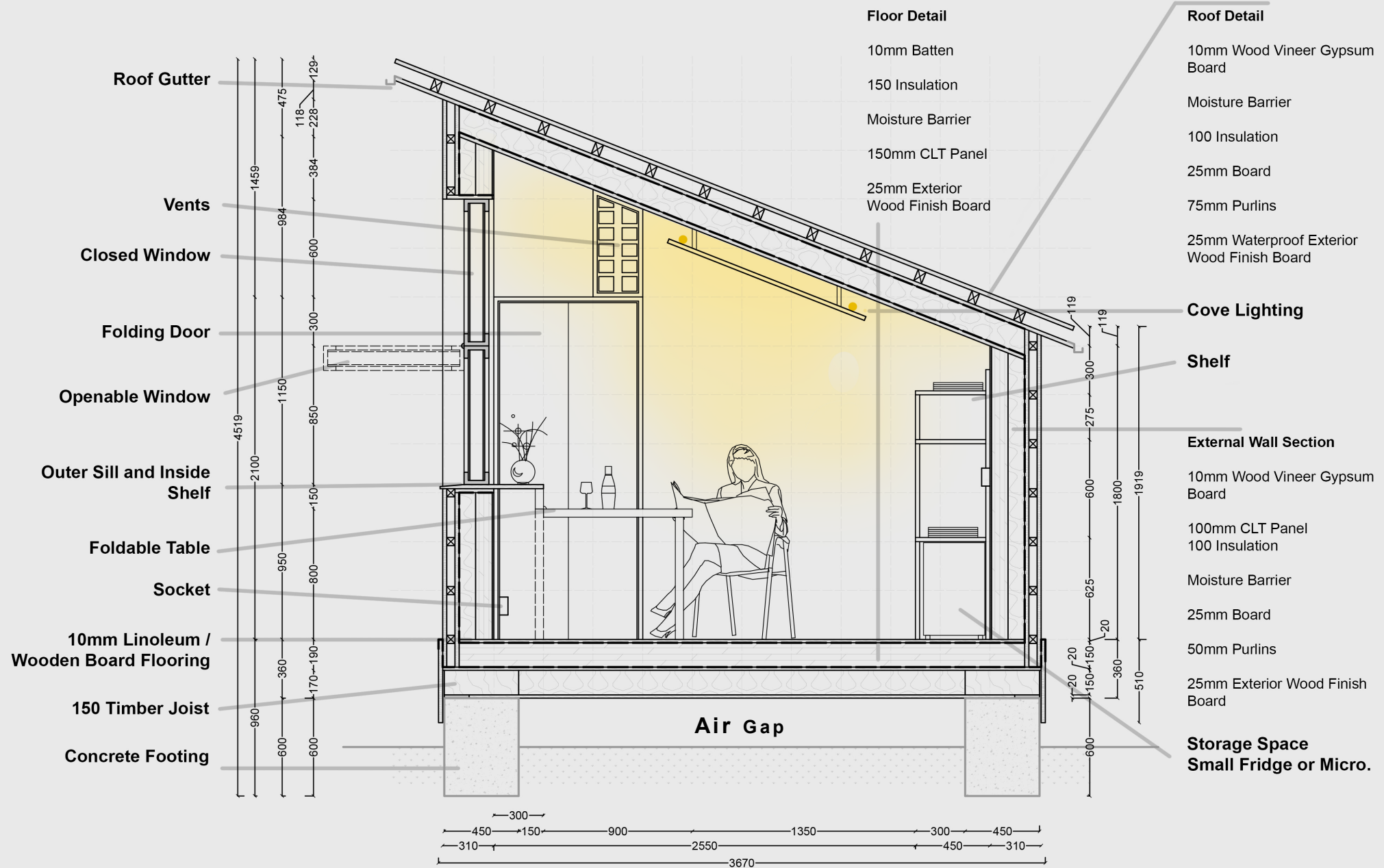
**Usable for up to 3
People**

EATING SPACE



PLAN 1:25

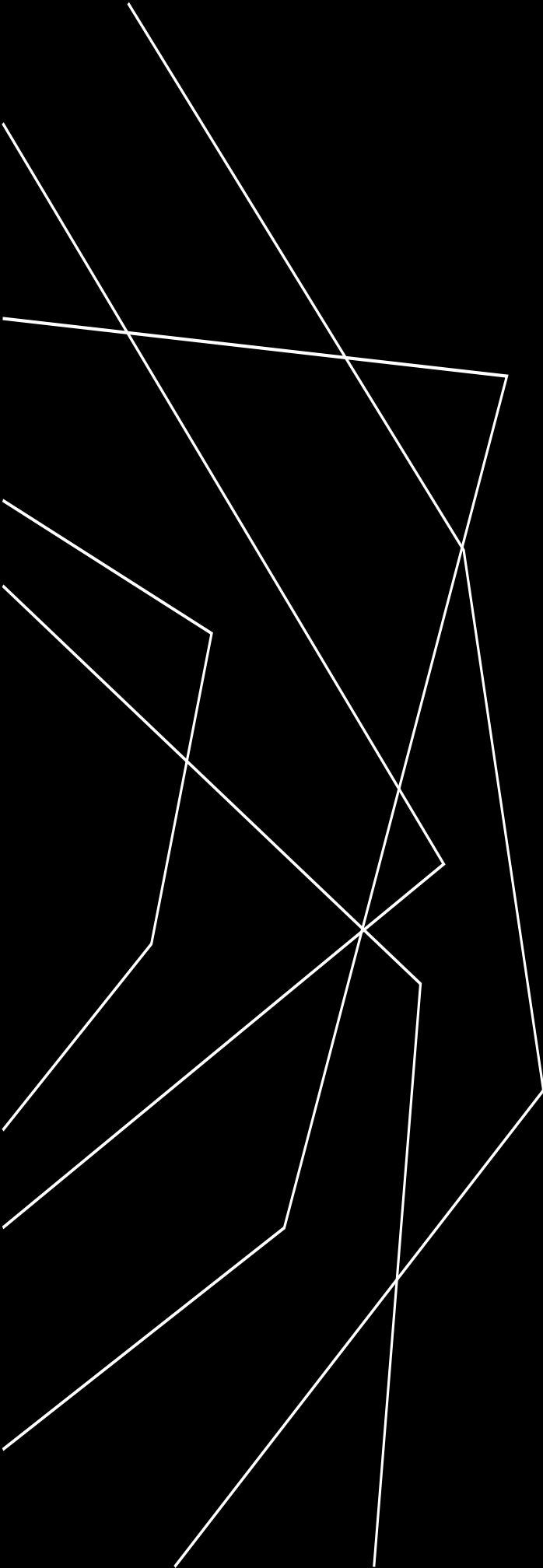
EATING SPACE



SECTION 1:25

EATING SPACE – MODEL VIEW





THANK YOU