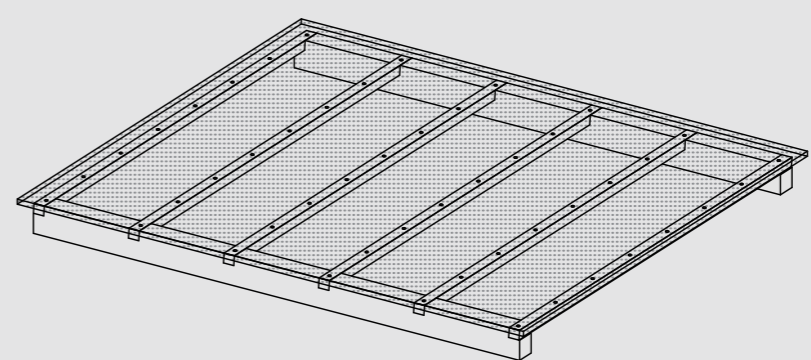
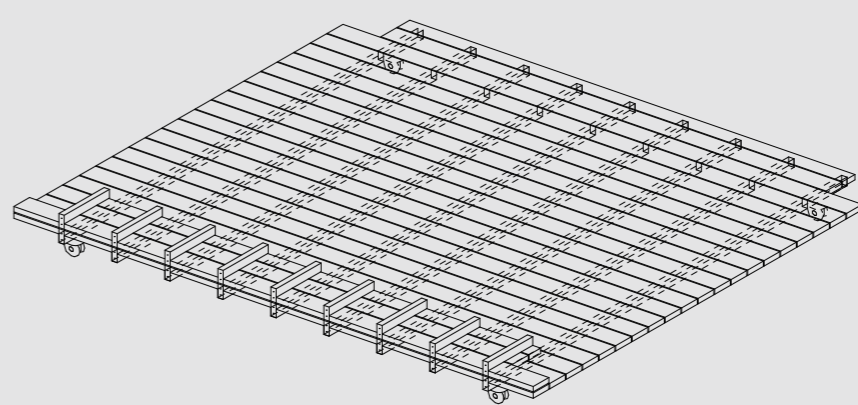


Plug-in System

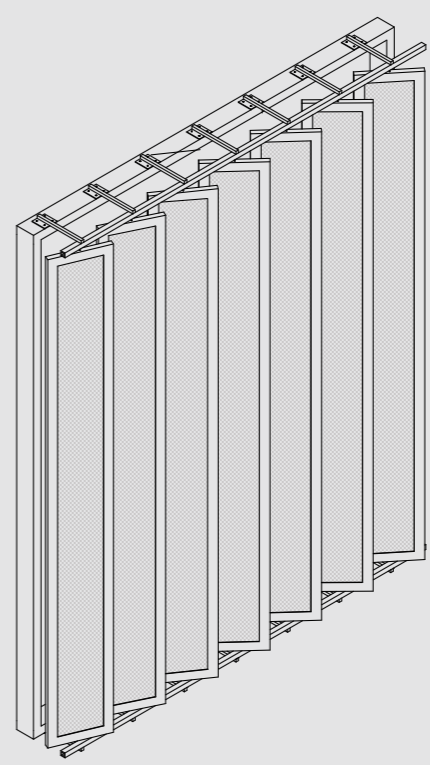
Lay the track on the beam, and set the bearing under the cabin, so that the cabin can slide smoothly.



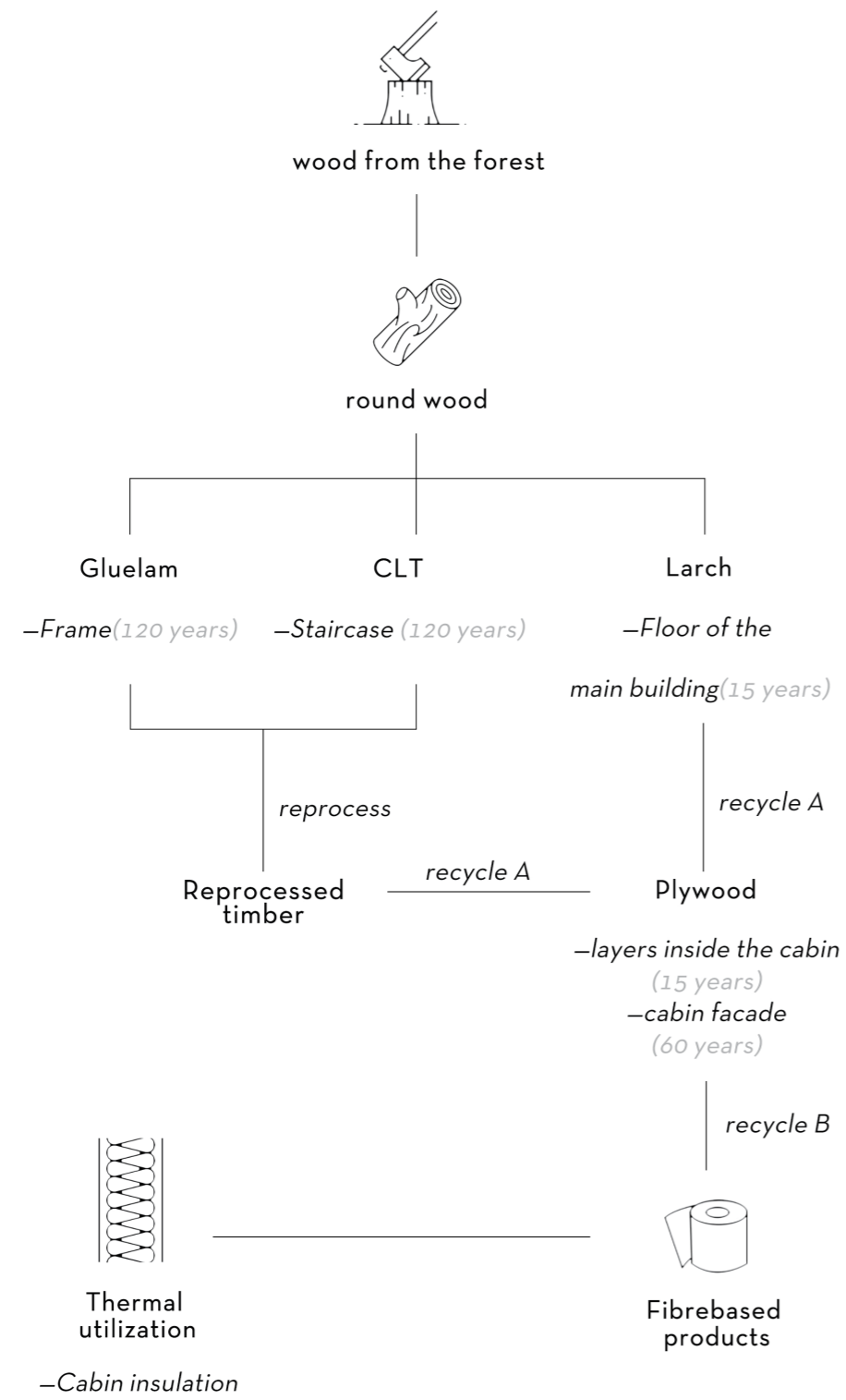
Roof

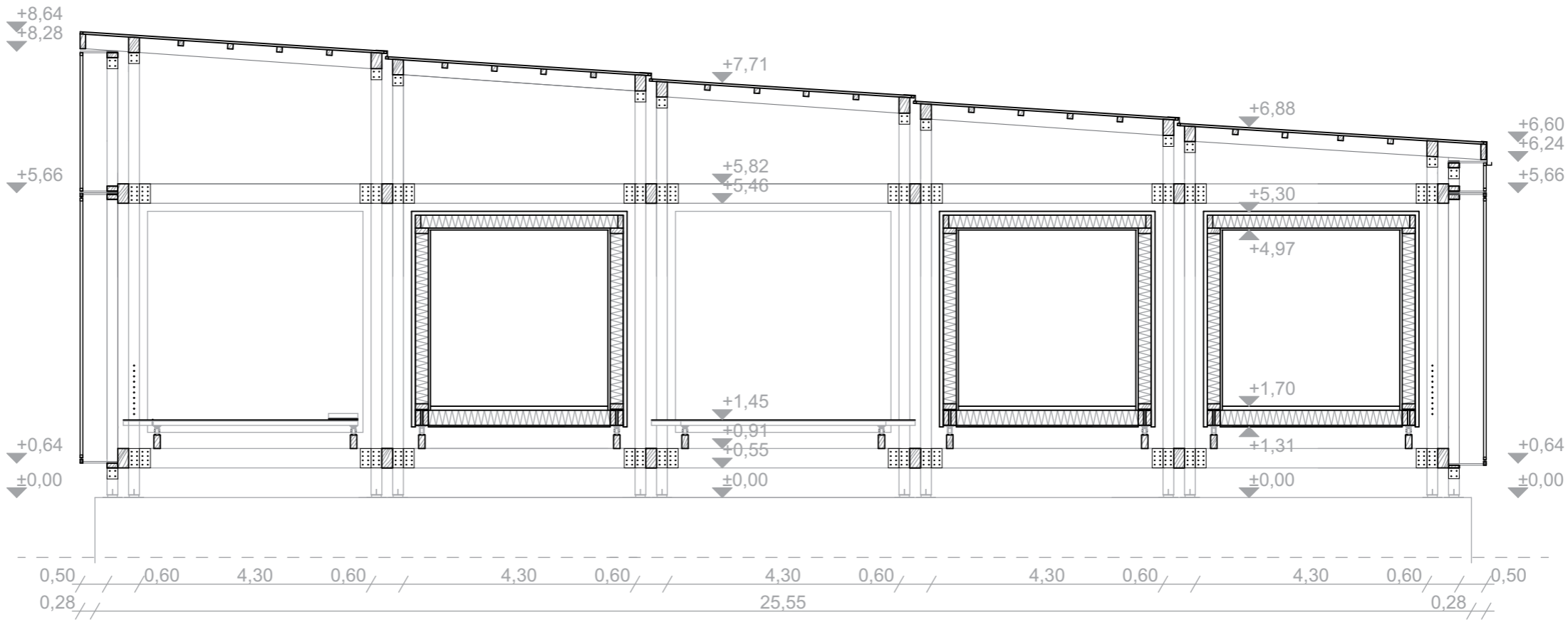


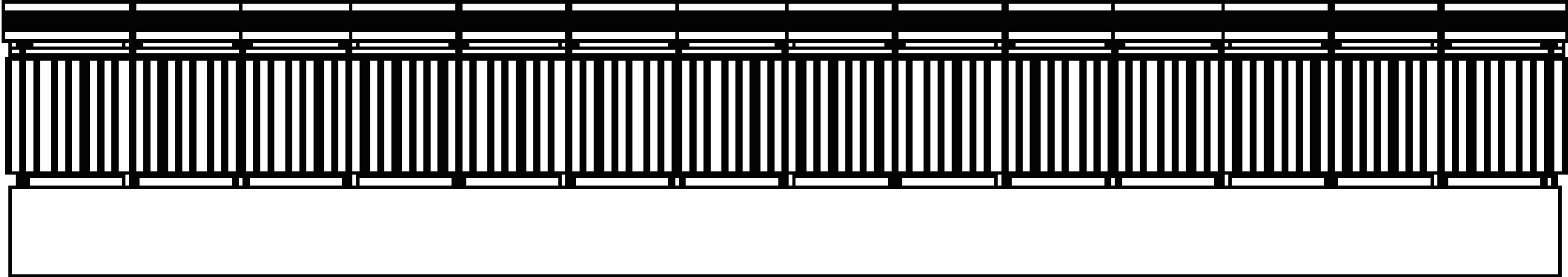
Floor



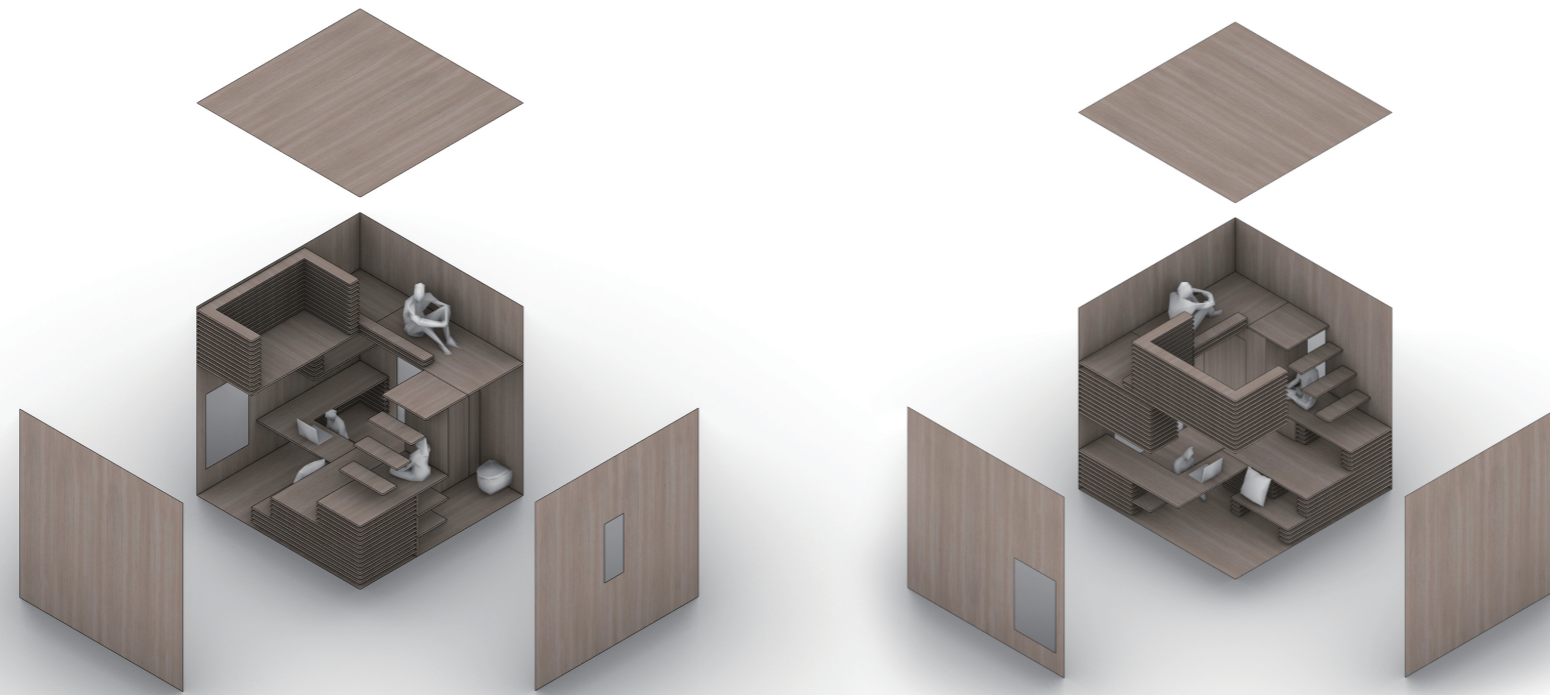
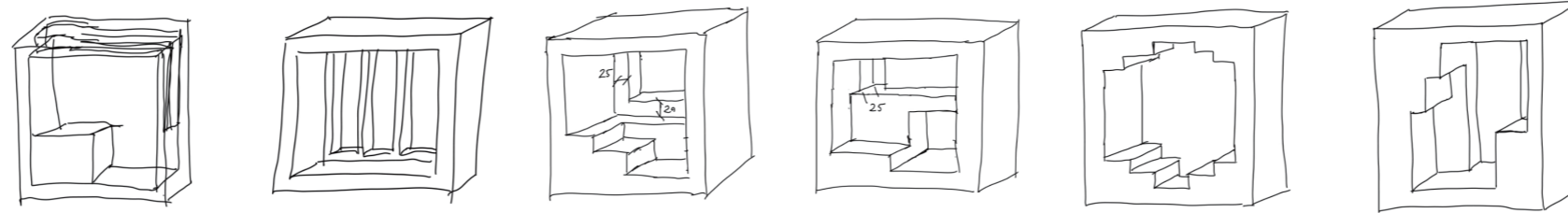
Facade



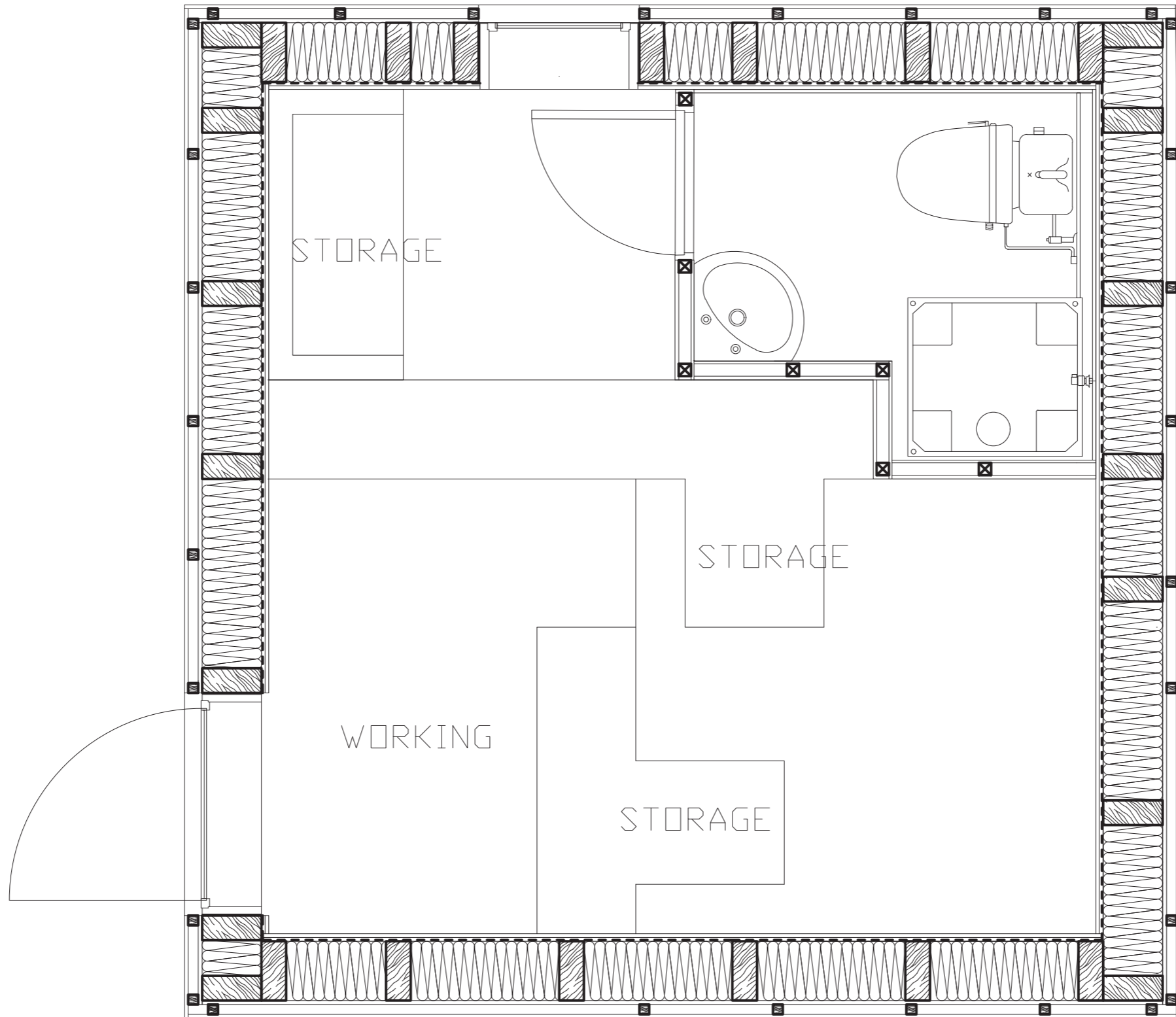




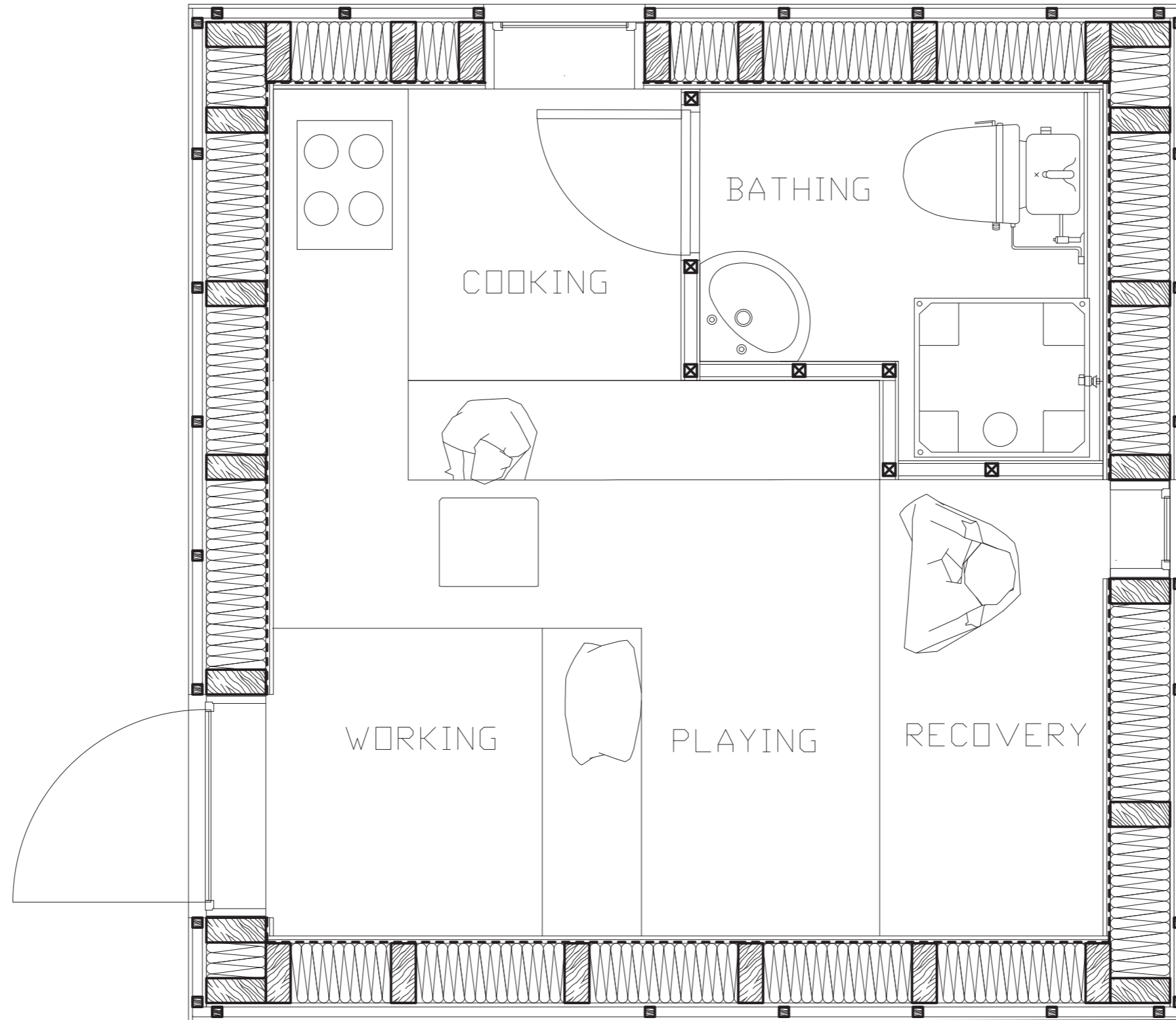
Living unit 4*4*4
analyze



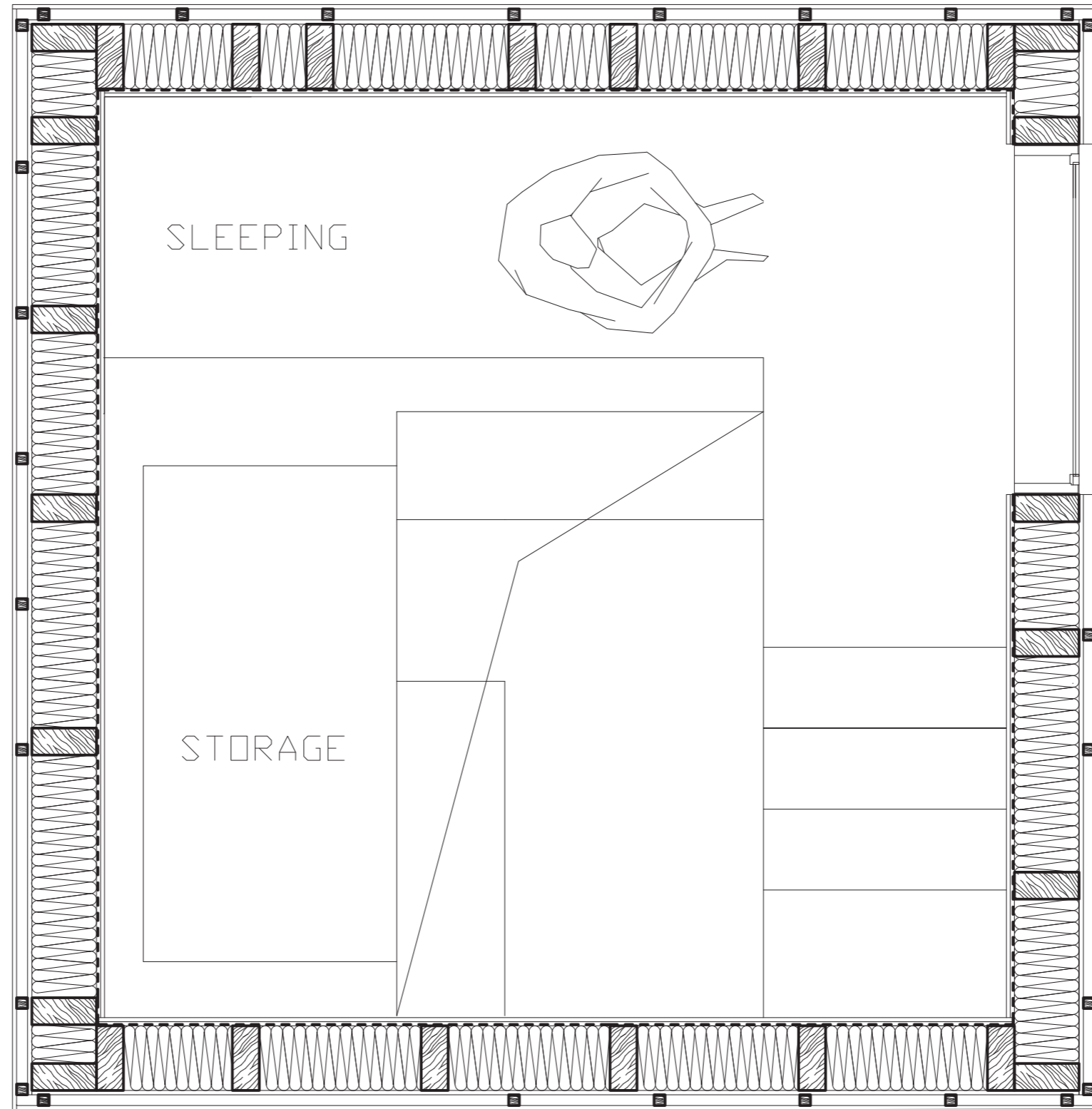
Living unit 4*4*4
plan 1:20



Living unit 4*4*4
plan 1:20

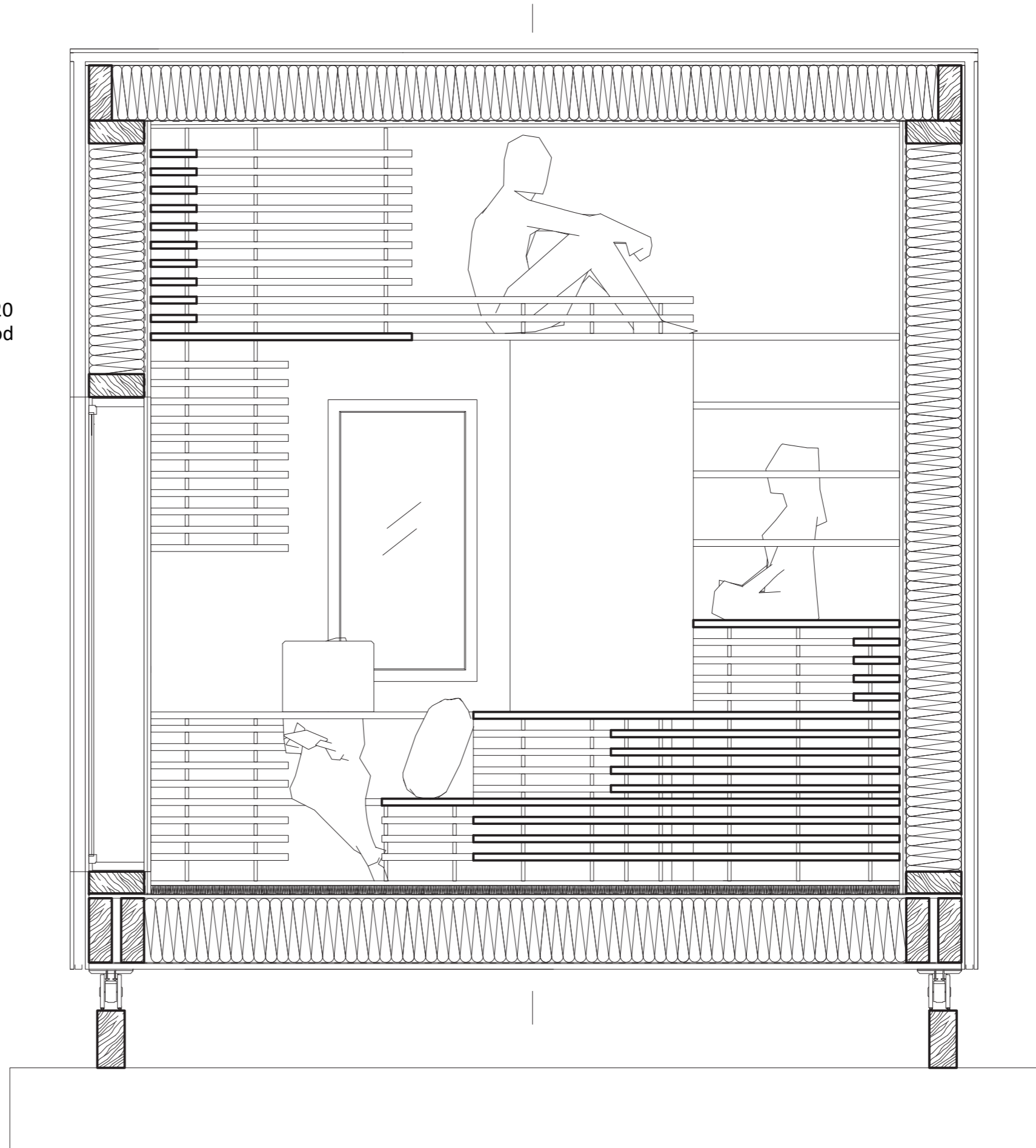


Living unit 4*8*4
plan 1:20

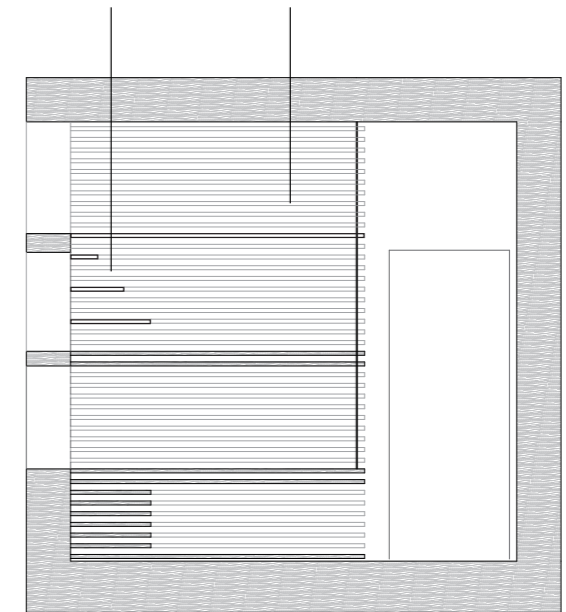
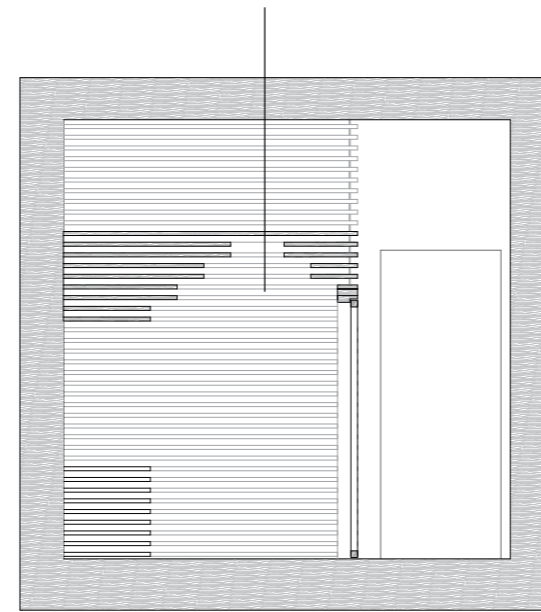
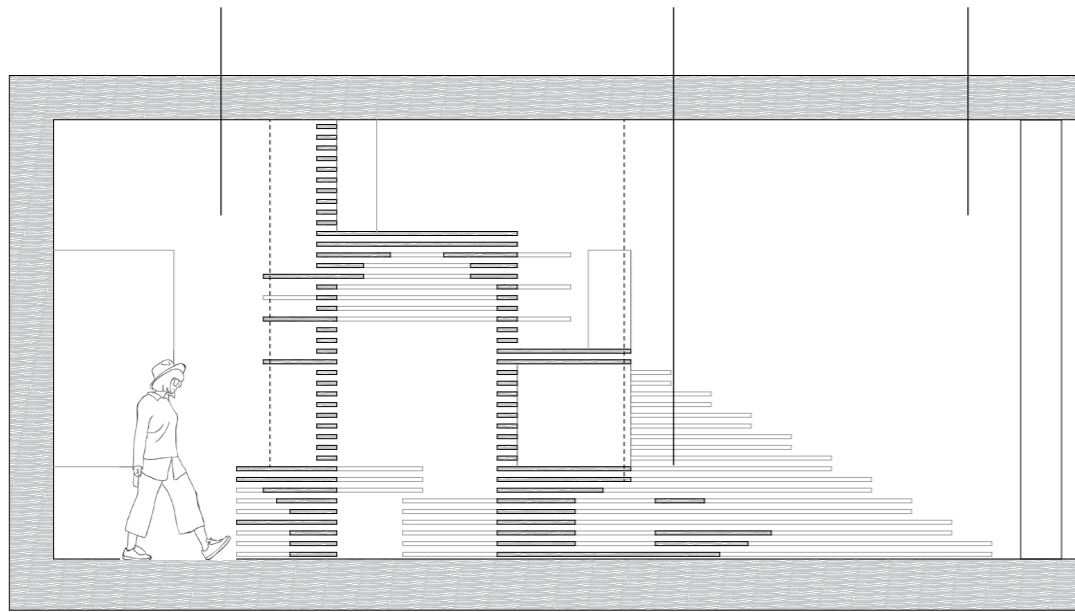
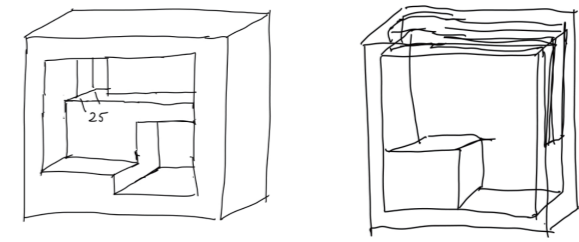
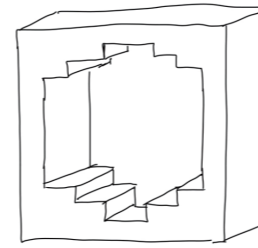
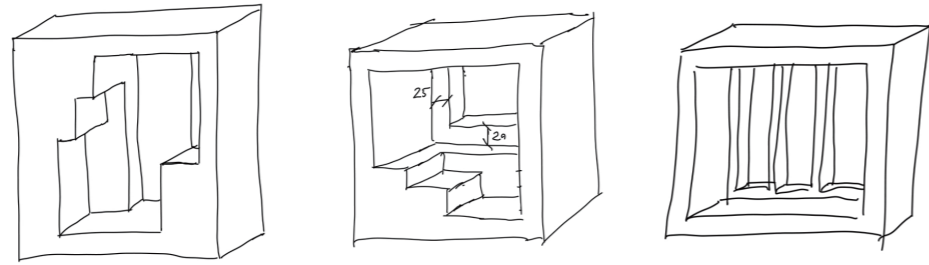


16 mm MDF
40 mm ventilation zone
280/120 mm timber post-and 240/120
beam construction with 240 mm wood
fibre thermal insulation
15 mm oriented-strand board
15 mm horizontal silver-fir boarding

20 mm larch floorboards
40 mm battens with woodfibre
insulation mat between;
vapour barrier;
15 mm OSB;
timber sections with 280 mm
cellulose thermal insulation between
breathable underlay 24 mm rough
larch boarding



Living unit 4*8*4
analyze

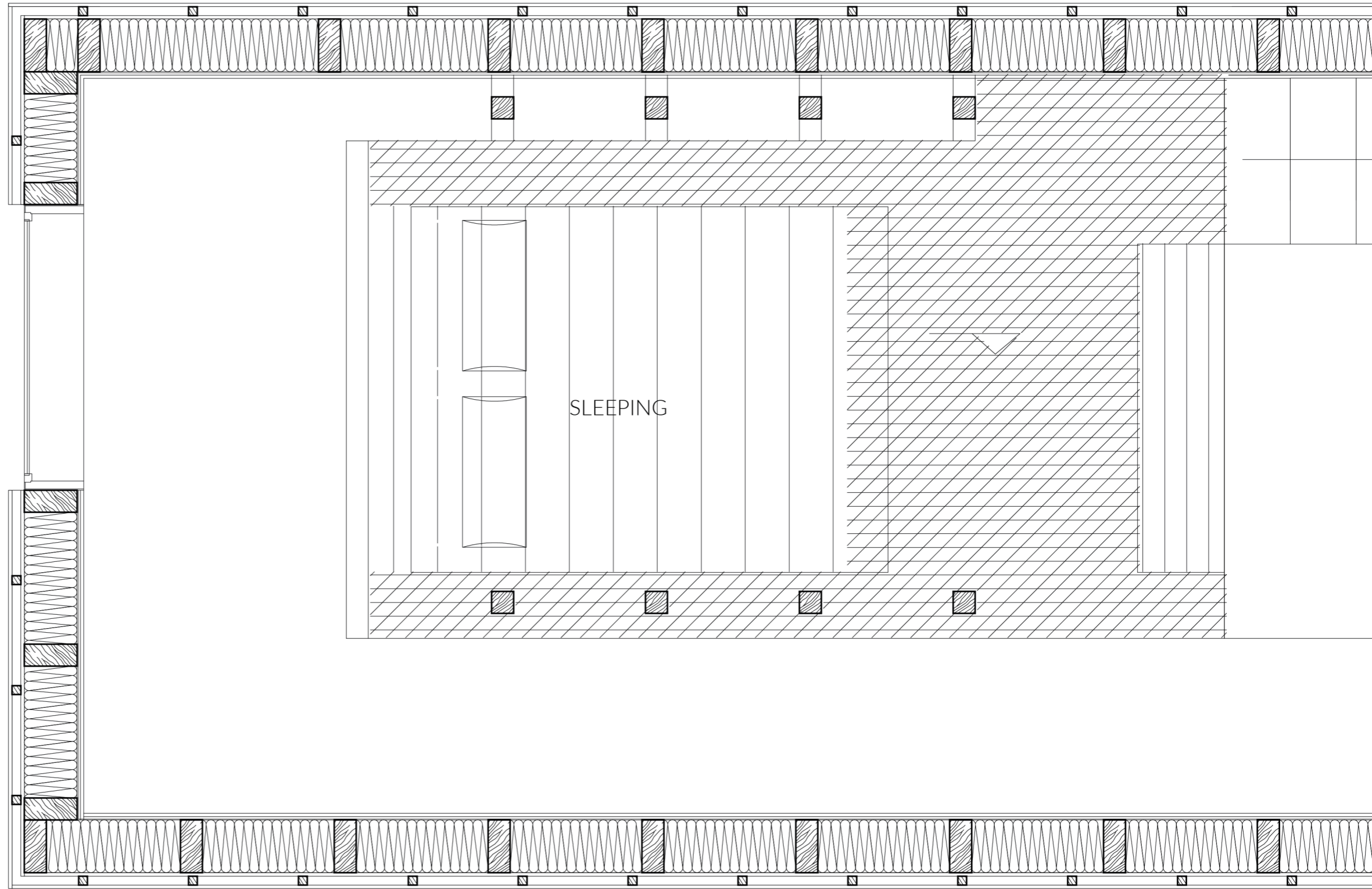


Living unit 4*4*4
plan 1:20

Living unit 4*8*4
section 1:20

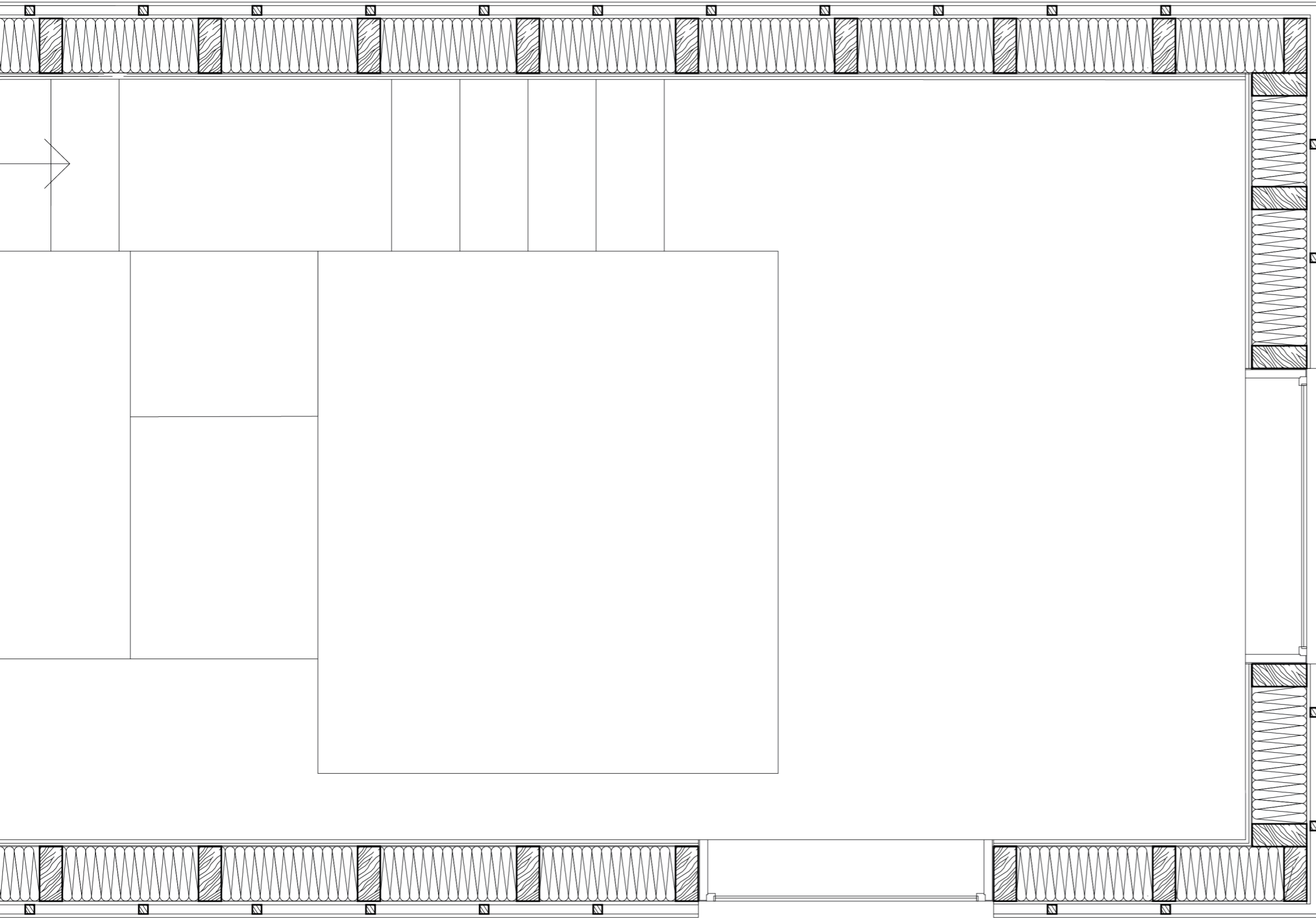
Living unit 4*12*4
analyze

1



Living unit 4*12*4
plan 1:20

2

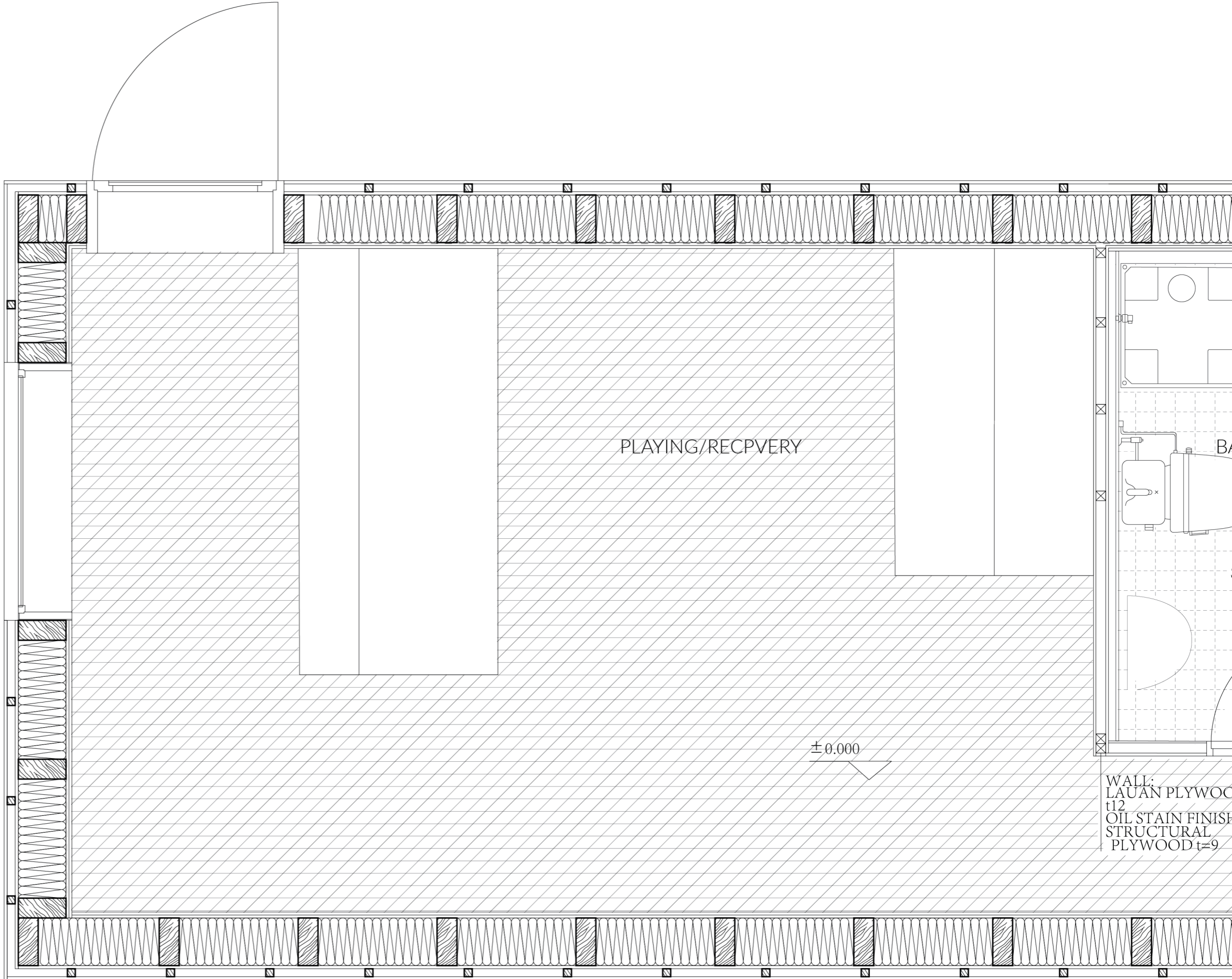


1

2

Living unit 4*12*4
analyze

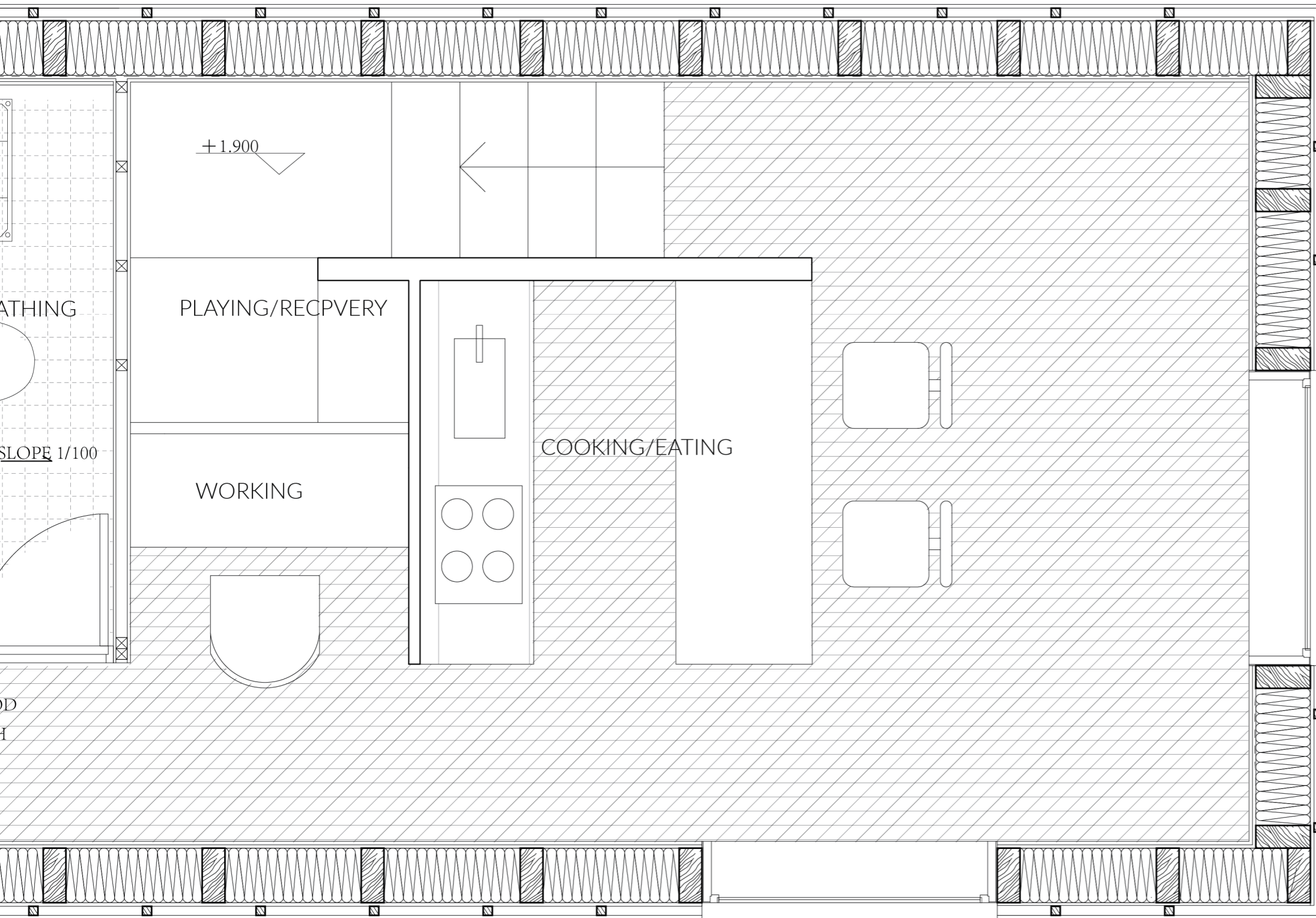
1



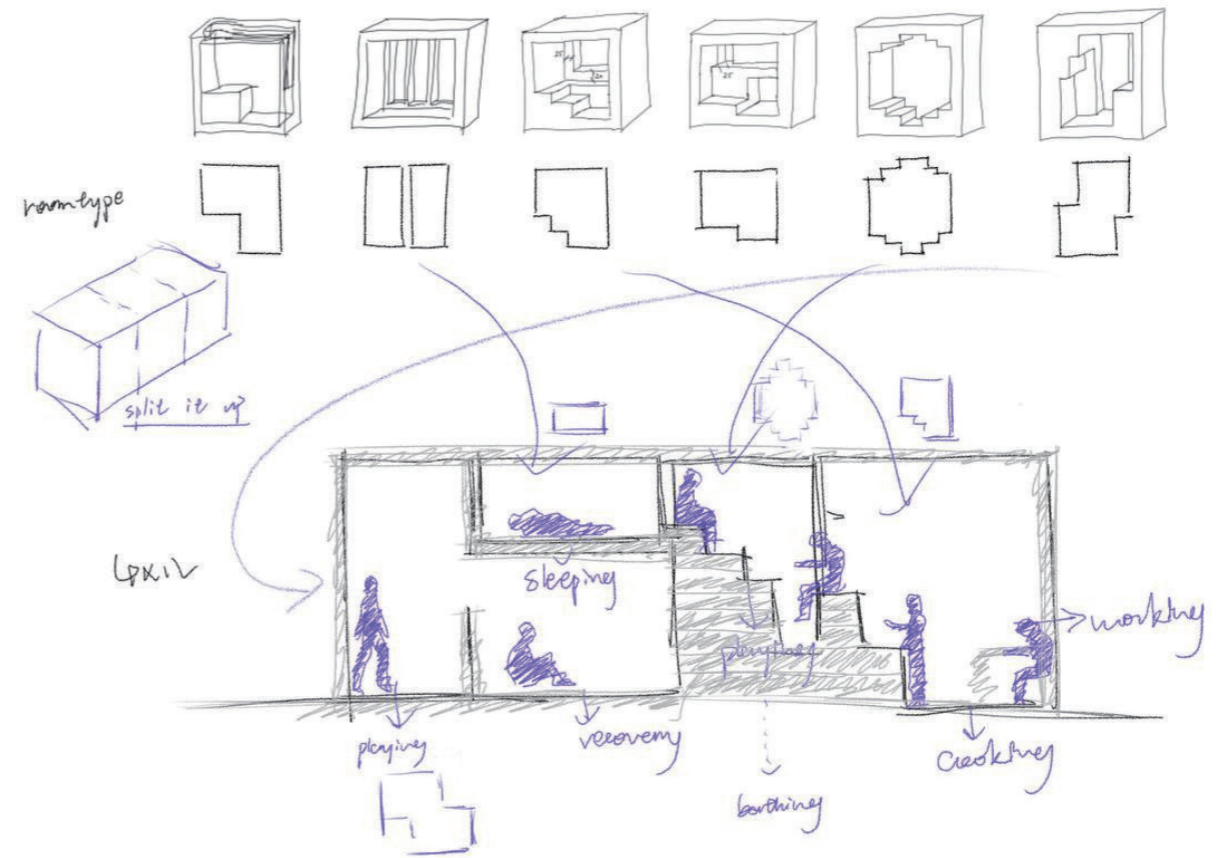
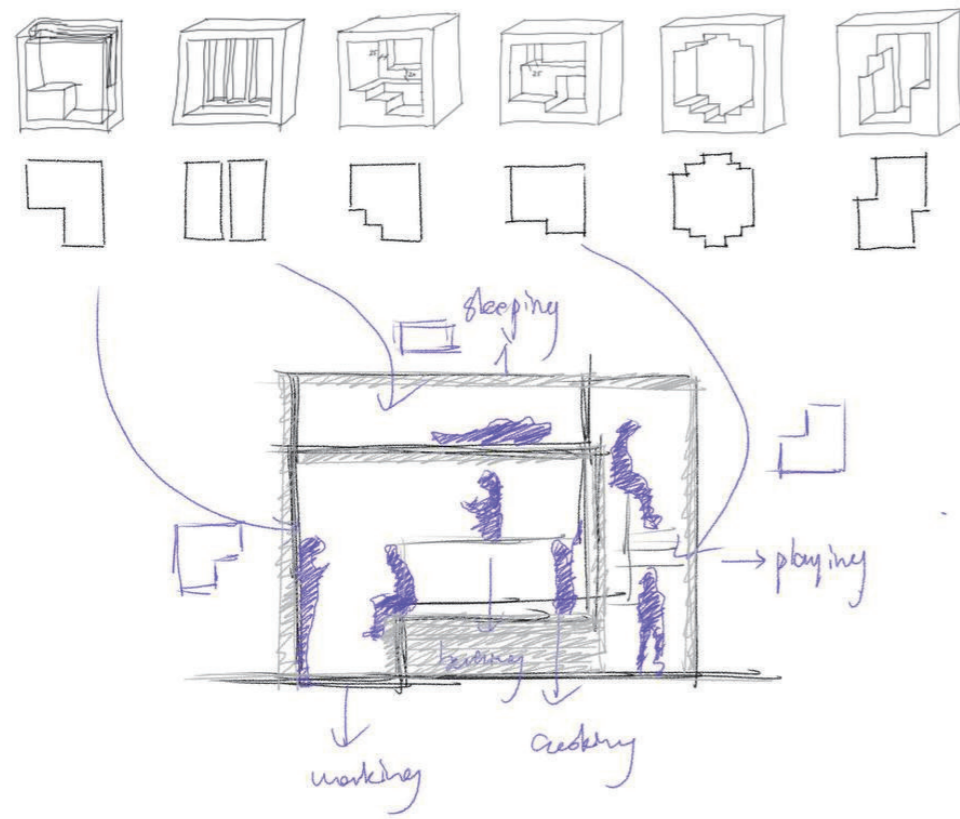
WALL:
LAUAN PLYWOOD
t12
OIL STAIN FINISH
STRUCTURAL
PLYWOOD t=9

Living unit 4*12*4
plan 1:20

2

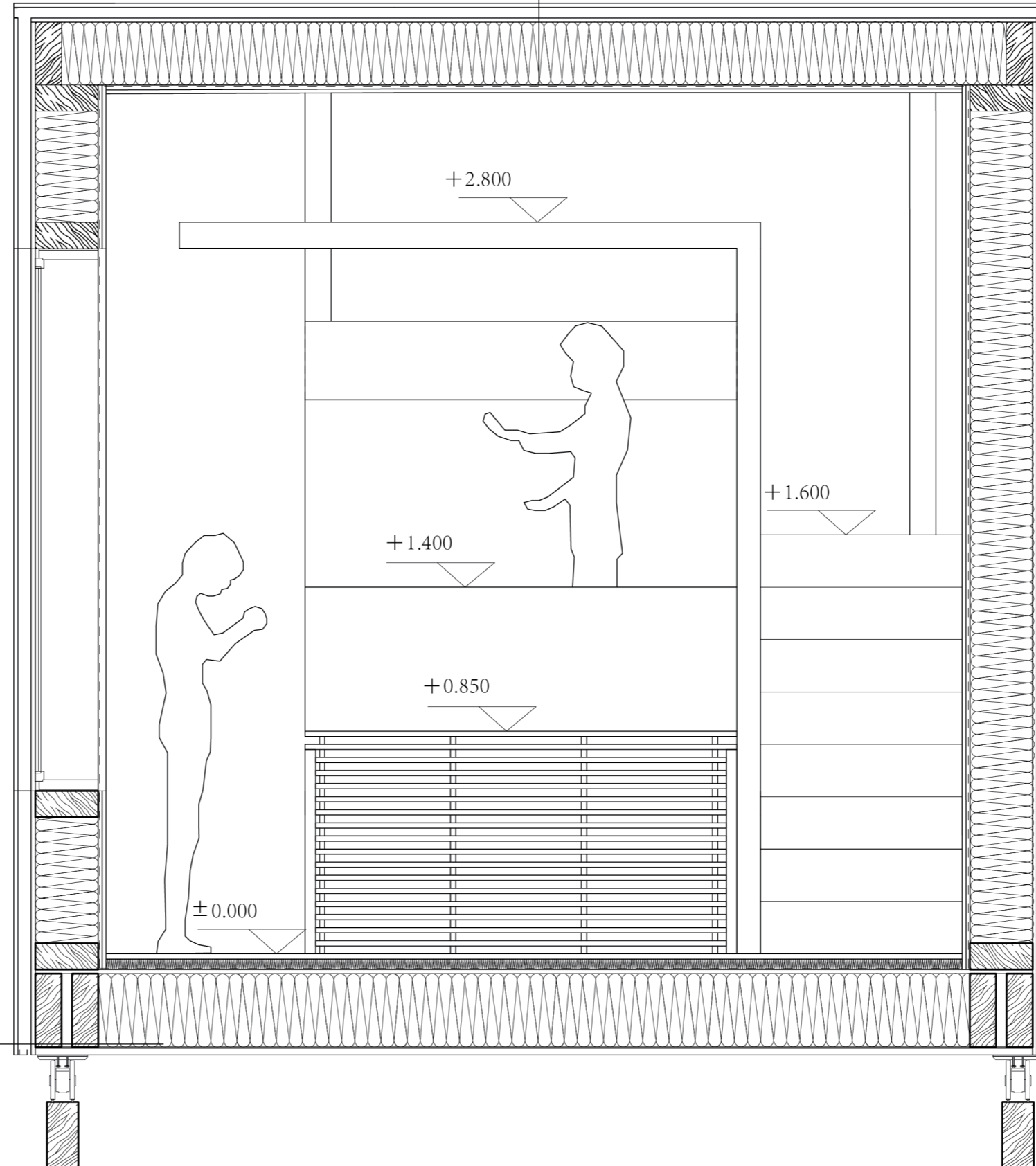


1



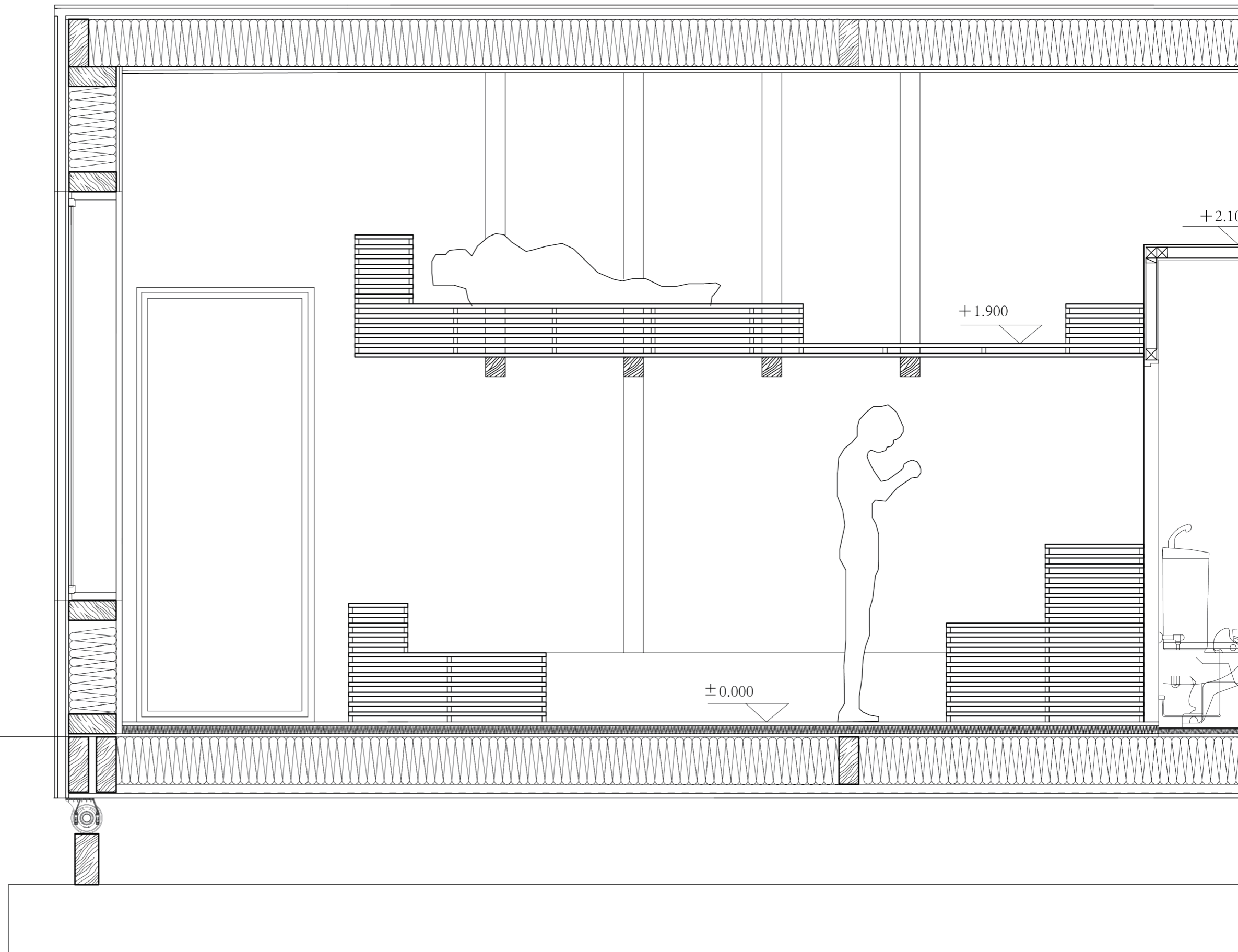
Living unit 4*12*4
section 1:20

16 mm MDF
40 mm ventilation zone
280/120 mm timber post-and 240/120
beam construction with 240 mm wood
fibre thermal insulation
15 mm oriented-strand board
15 mm horizontal silver-fir boarding



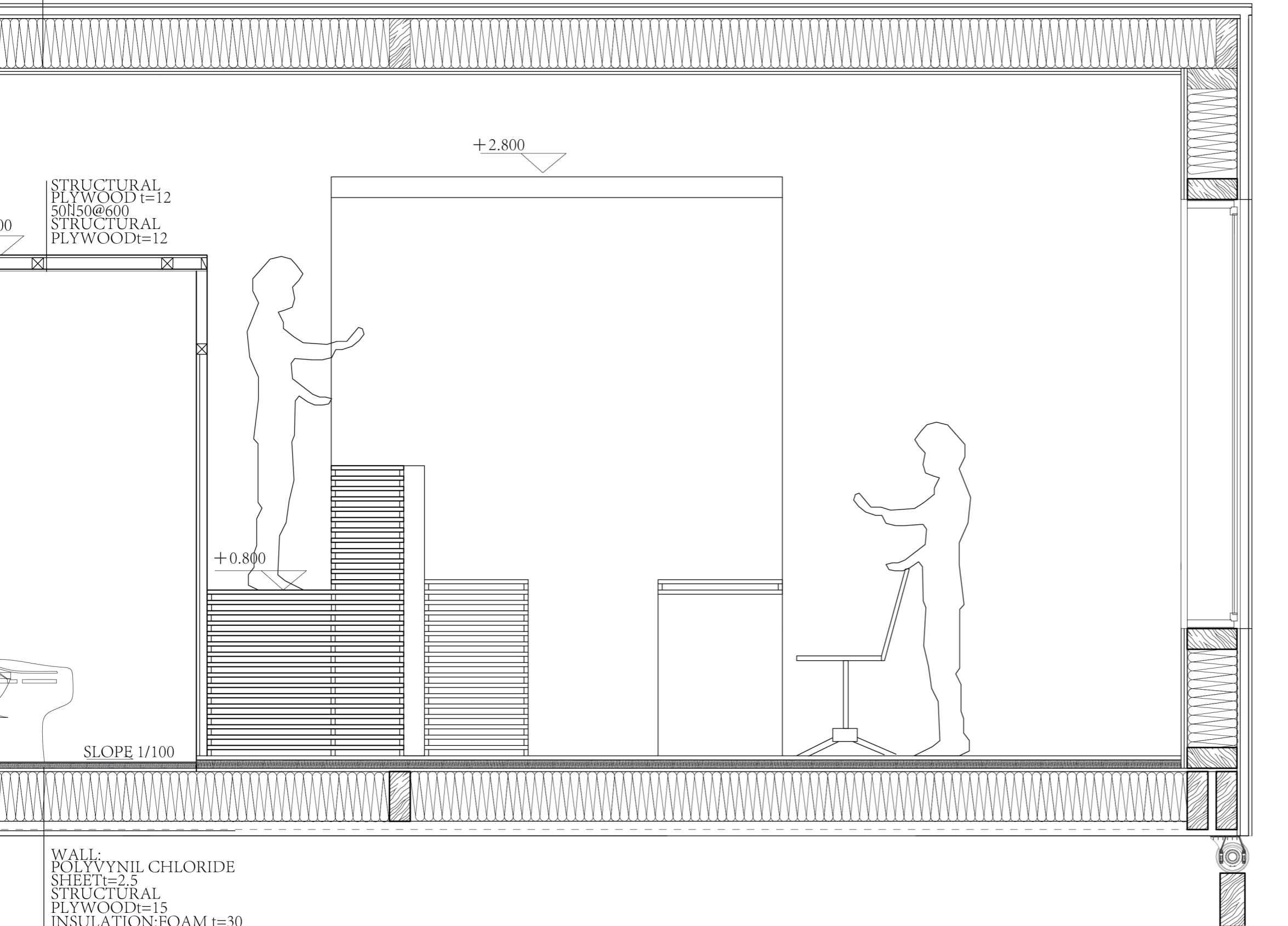
20 mm larch floorboards
40 mm battens with woodfibre
insulation mat between;
vapour barrier;
15 mm OSB;
timber sections with 280 mm
cellulose thermal insulation between
breathable underlay 24 mm rough
larch boarding

Living unit 4*12*4
section 1:20



20 mm larch floorboards
40 mm battens with woodfibre
insulation mat between;
vapour barrier;
15 mm OSB;
timber sections with 280 mm
cellulose thermal insulation between
breathable underlay 24 mm rough
larch boarding

Living unit 4*12*4
section 1:20
40 mm ventilation zone
280/120 mm timber post-and 240/120
beam construction with 240 mm wood
fibre thermal insulation
15 mm oriented-strand board
15 mm horizontal silver-fir boarding



STRUCTURAL
PLYWOOD t=12
50x50@600
STRUCTURAL
PLYWOOD t=12

WALL:
POLYVINYL CHLORIDE
SHEET t=2.5
STRUCTURAL
PLYWOOD t=15
INSULATION: FOAM t=30