

SUN



WIND

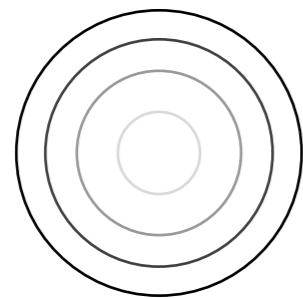
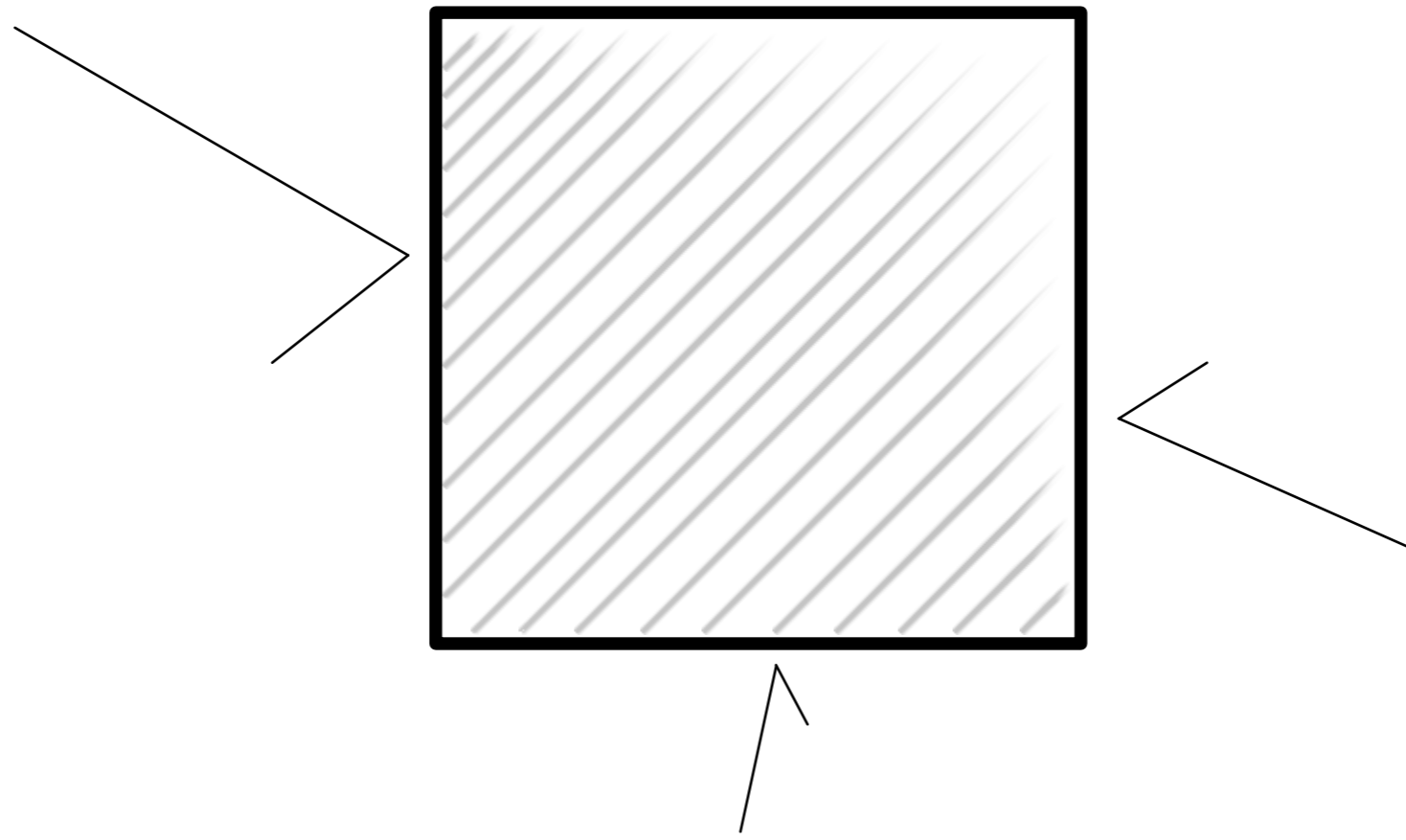


WATER

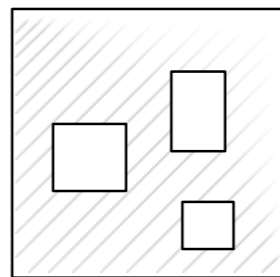


NO PROTECTION

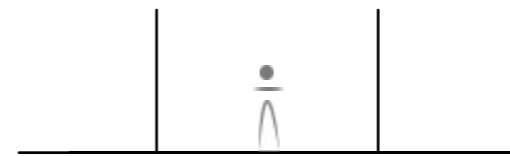
FIELD



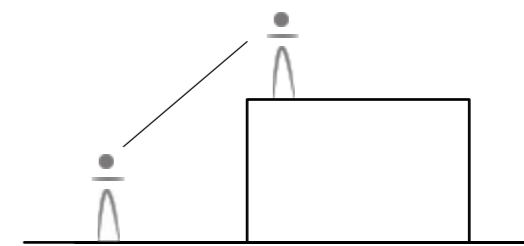
LAYERS OF  
PRIVACY | PROTECTION



FREE SPACE  
INSIDE

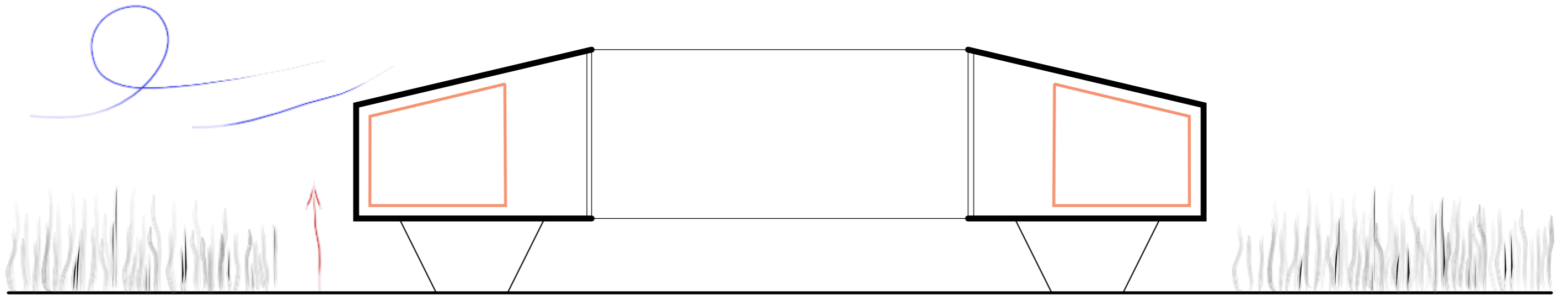


ISOLATION |  
SEPERATION



PRIVILEGE  
POSITION

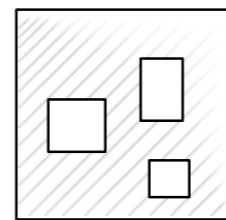
FORTRESS



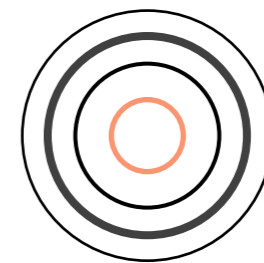
WATER PROTECTION



STRONG BOUNDARIES



FREE SPACE  
INSIDE



LAYERS OF  
PROTECTION

CONCEPT

“A mighty fortress is our God.” When someone has a hard time trusting others, you might say they have retreated to a “fortress of their own making.”

MARTIN LUTHER

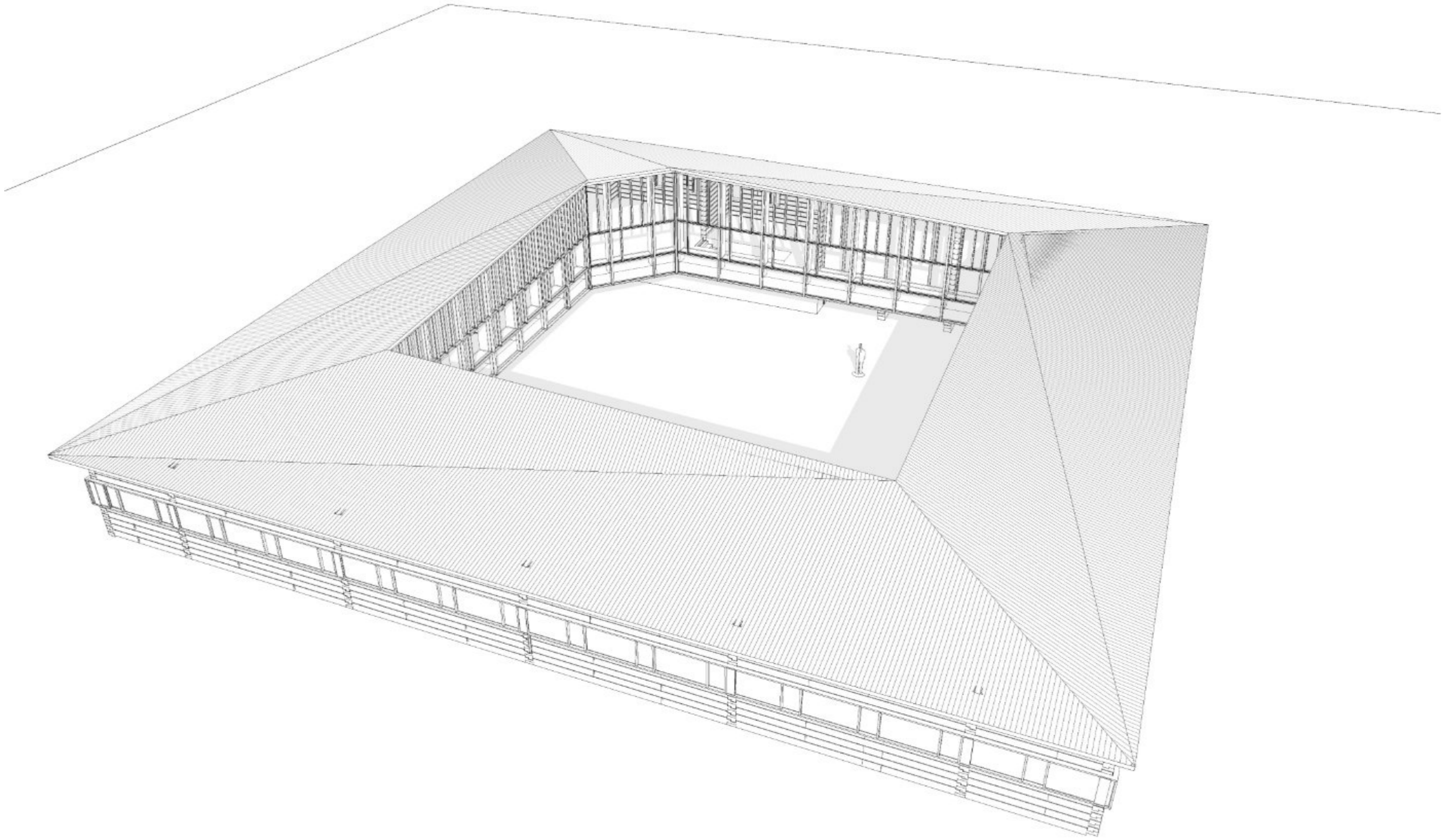


---

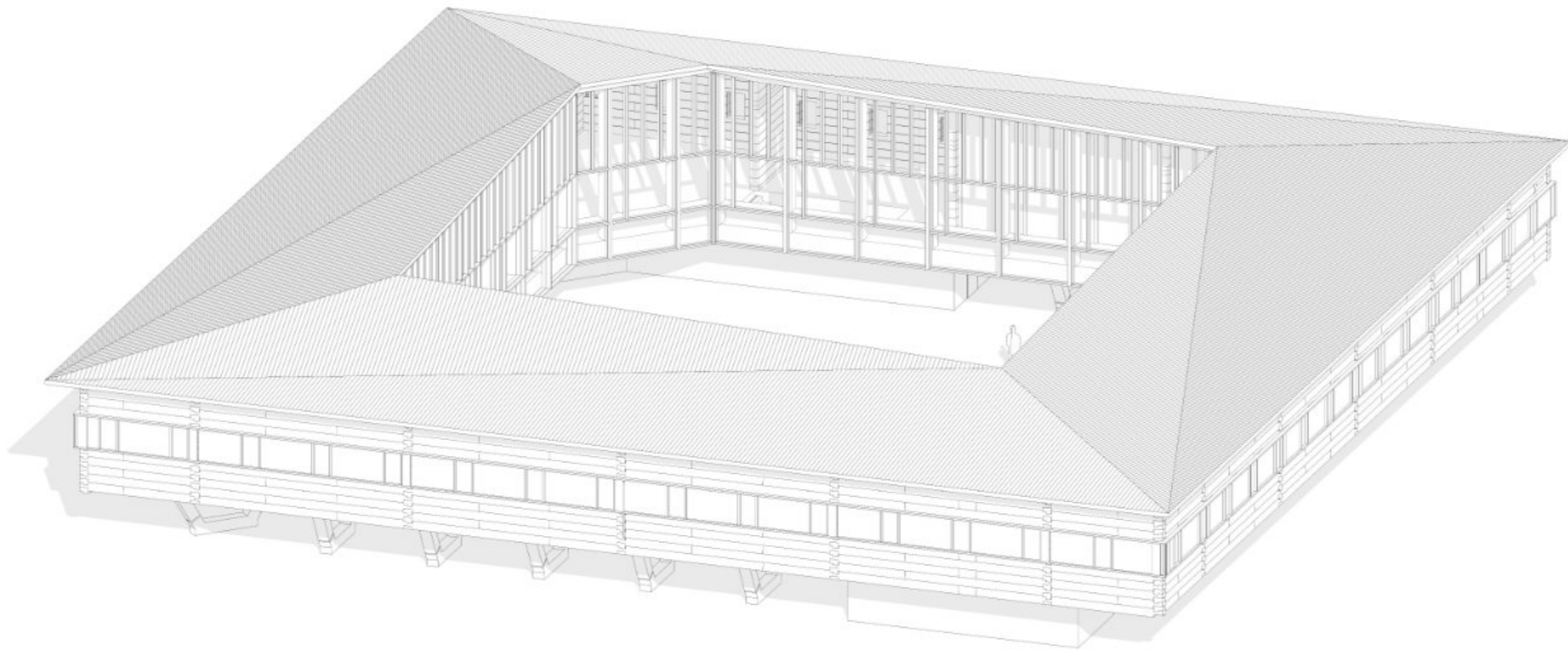
the place we want to create is intended for people who are looking for a place of retreat to slow down and concentrate on their **basic needs**.



MAIN DRAWING



MAIN DRAWING

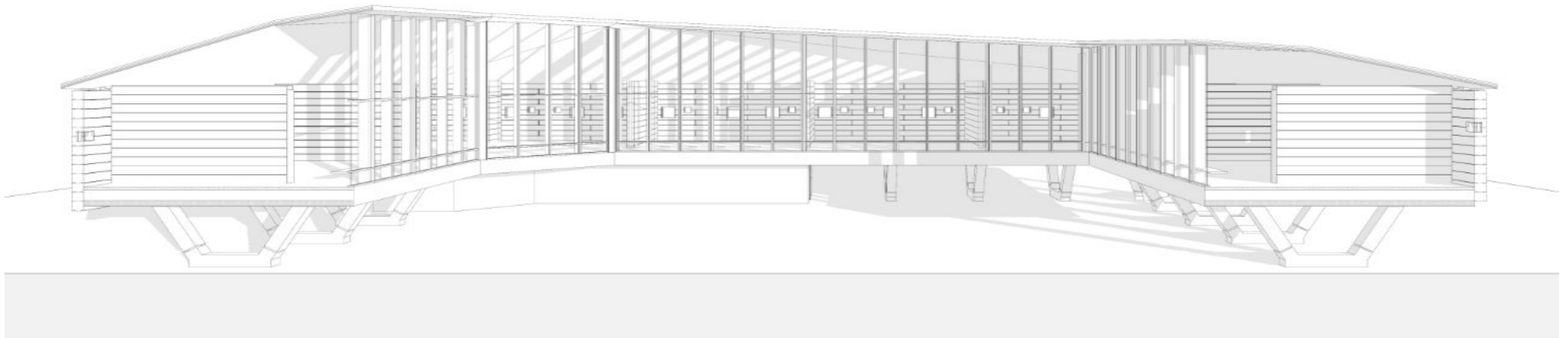


MAIN DRAWING

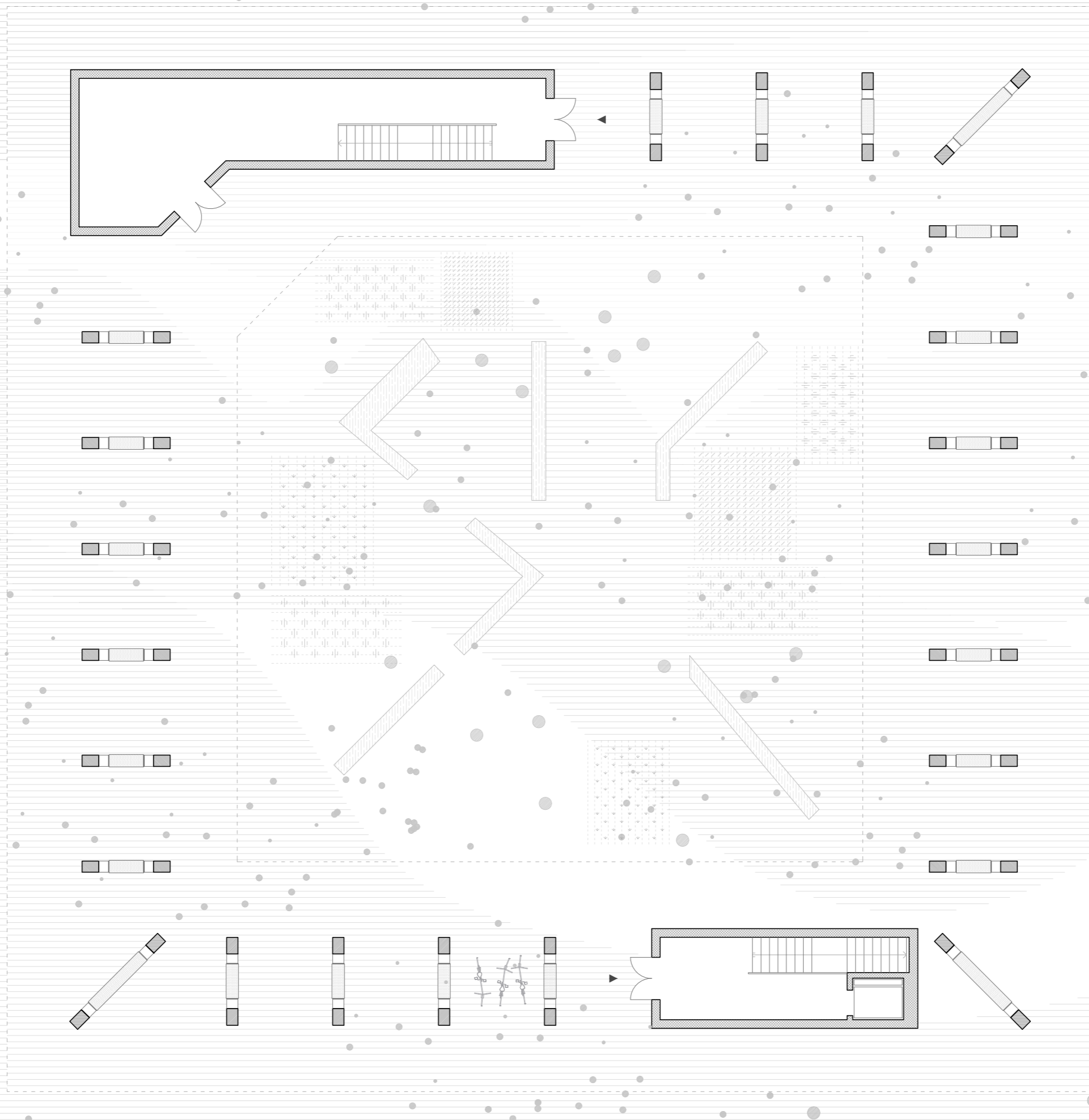




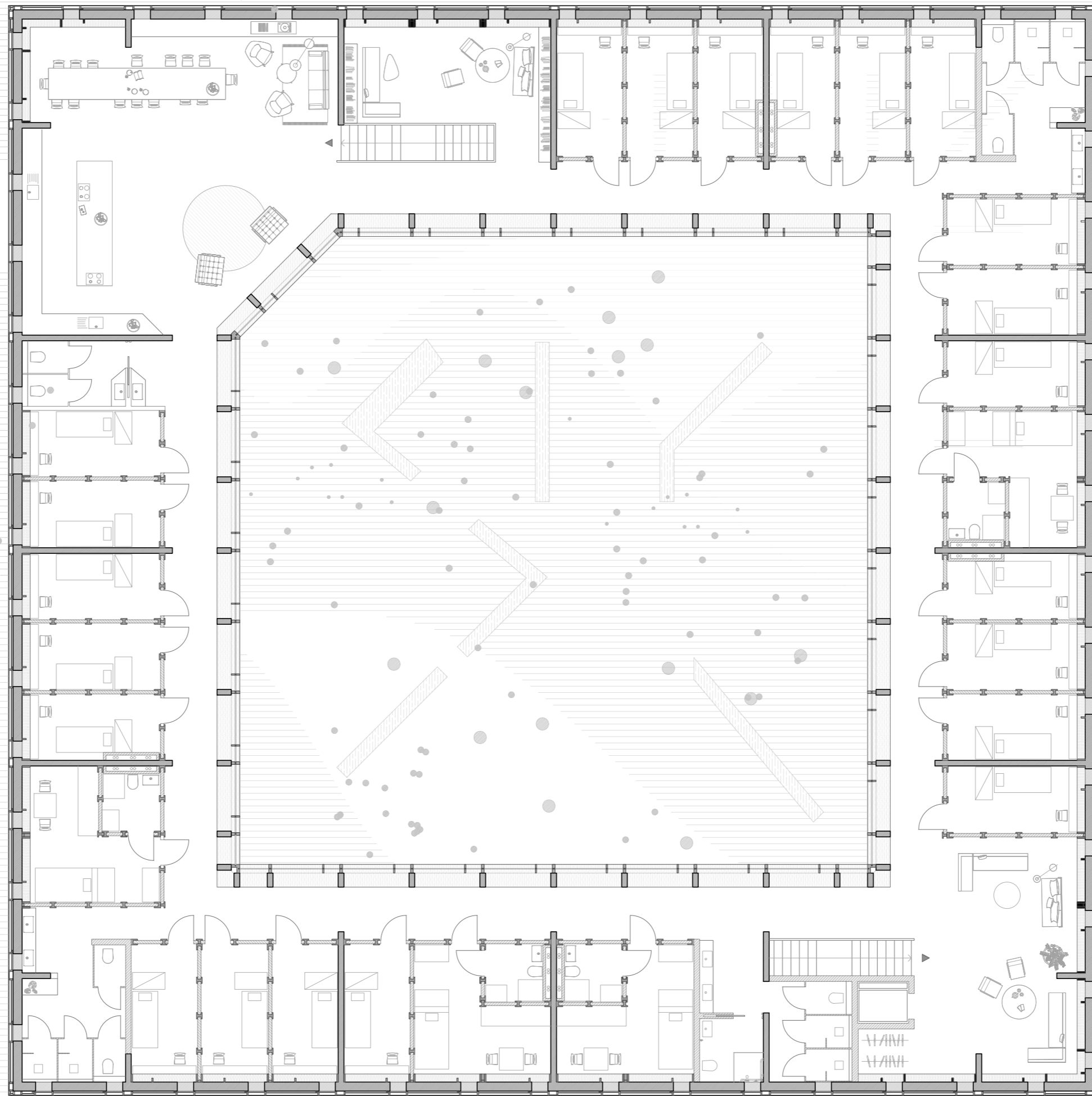
VIEW EAST 1 | 150



SECTION 1 | 150



1. FLOOR 1 | 150



1. FLOOR 1 | 150

We want to focus on natural material,  
Witch can be easily seperated after the  
lifespan of each category!

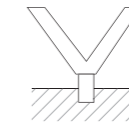
reduse the need of glue where it is possible  
dry assembly  
Ligthly processes products  
easy to assemble and disassemble



1

MINIMUM IMPACT ON SOIL

punctual foundations



2

SOLID AND PERMANENT BOUNDARIES

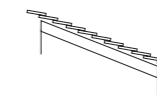
massive wood structure



3

DURABLE PROTECTIONS

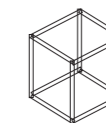
stone cladding roof



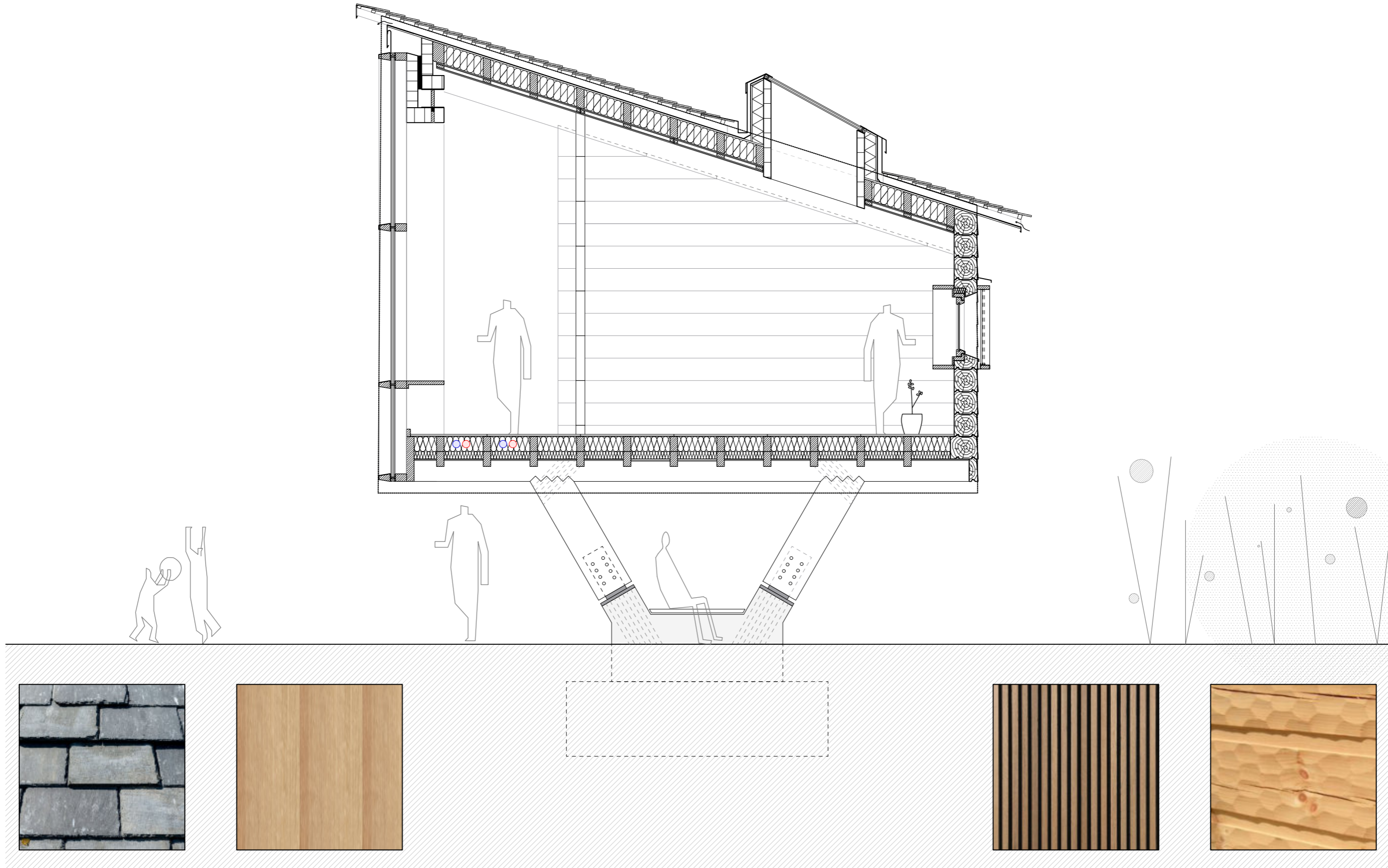
4

FLEXIBLE INTERIORS

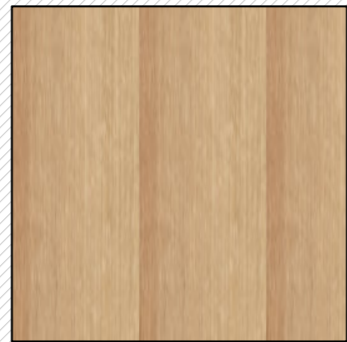
demountable cells



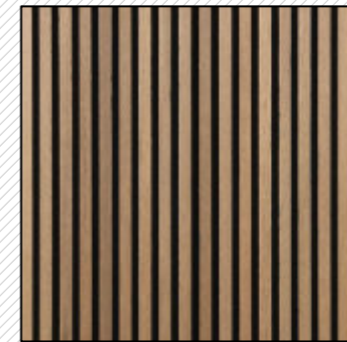
STRUCTURAL GUIDELINES



slate slabs for roofing



durable Oak floor and windowframes



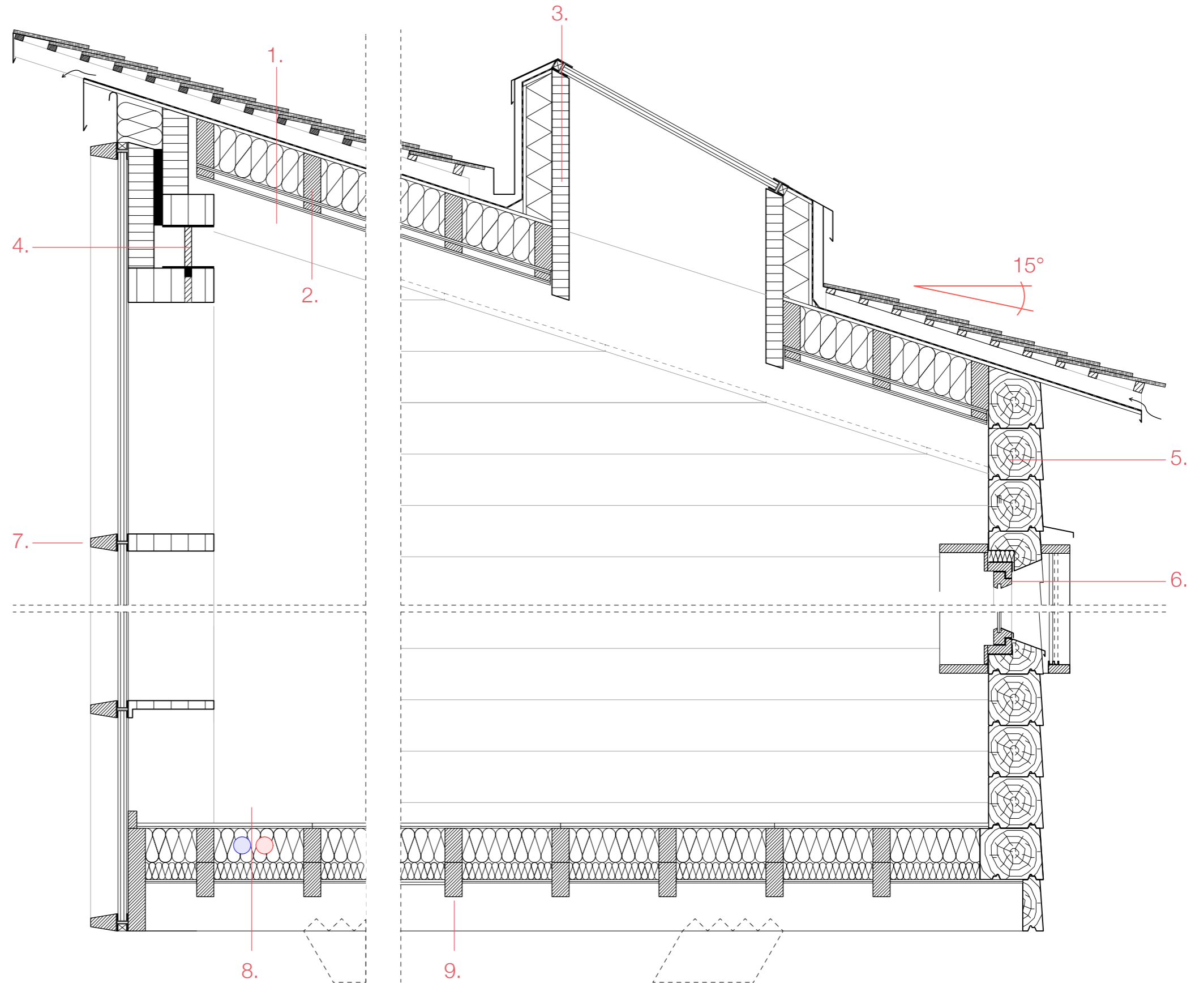
acoustic ceiling boards with installation space



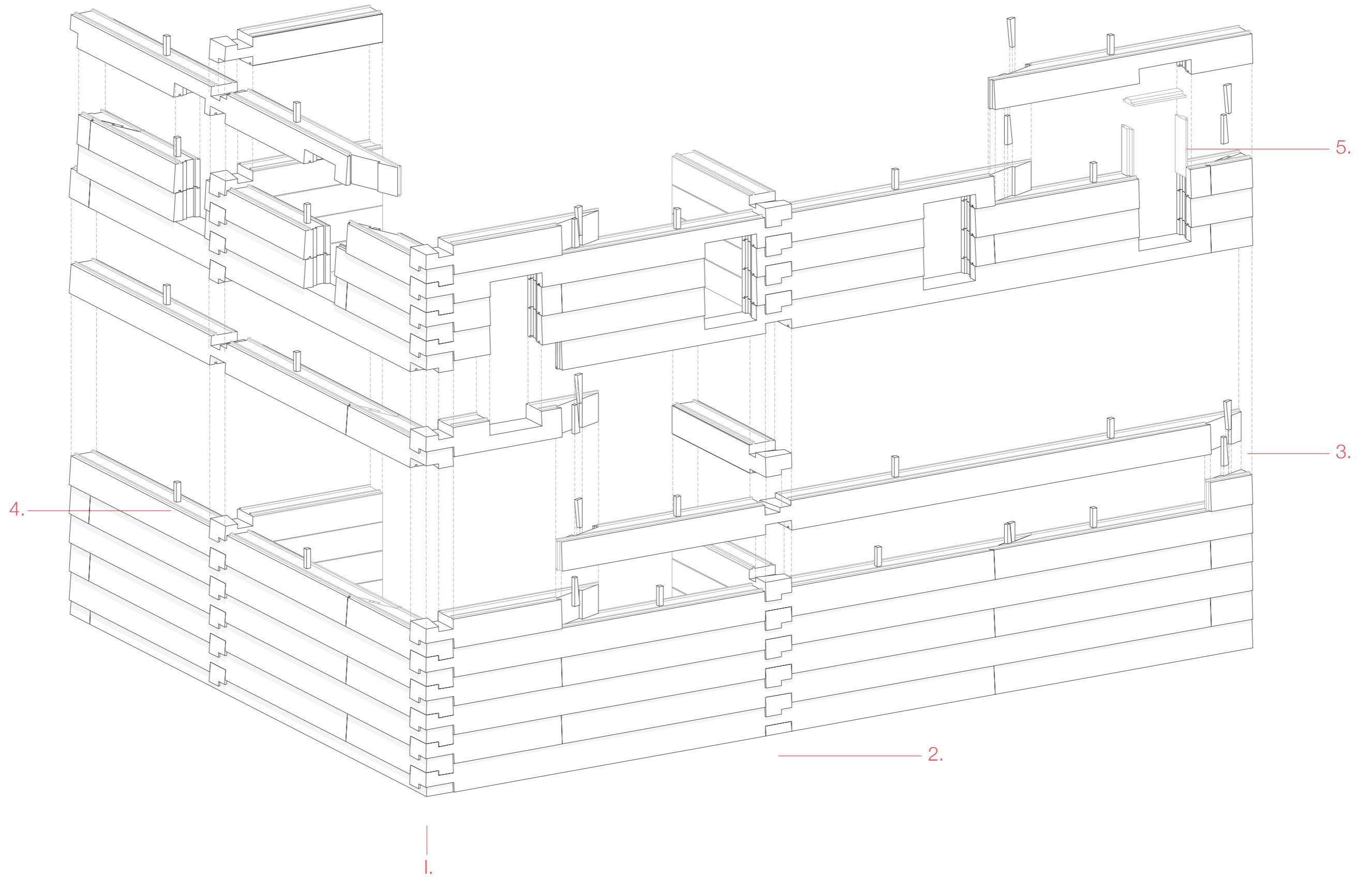
pine logwall with adzed finish

SECTION 1 | 50

- |     |   |  |
|-----|---|--|
| 1.  | Slate slabs, 30 mm<br>counterbattens<br>battens<br>bitumen roofing membrane,<br>moisture diffusing<br>GFM board<br>Cellulose Insulation<br>GFM board<br>installation layer<br>prefab. acoustic panels | 45   45 cm<br>5   5 cm<br>10   6 cm<br><br>2 cm<br>25 cm<br>2 cm<br>4 cm<br>2 cm |
| 2.  | main beam<br>secondary support  | 60   20 cm<br>25   10 cm   |
| 3.  | double glazing<br>in alum. frame:<br>glass profile system<br>glulam oak   | 40 mm<br>50 mm<br>130   10 cm  |
| 4.  | Post Leveler for settling   | 20 cm  |
| 5.  | loaded Log wall<br>Pine or Cedar<br>splitted or hammered  | 30   30 cm   |
| 6.  | oak   |  |
| 7.  | oak   |  |
| 8.  | oak blank 30 mm<br>Cellulose Insulation<br>+ insutallation<br>GFM board   | 125   25 cm<br>25 cm<br>2 cm   |
| 9.  | main beam , gl ulam pine<br>secondary support pine<br>composite action in timber  | 40   20 cm<br>40   10 cm   |
| 10. |   |  |

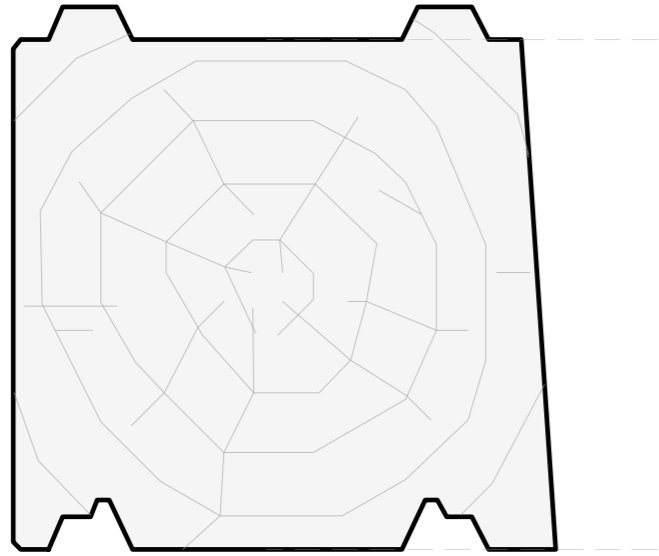


SECTION 1 | 25

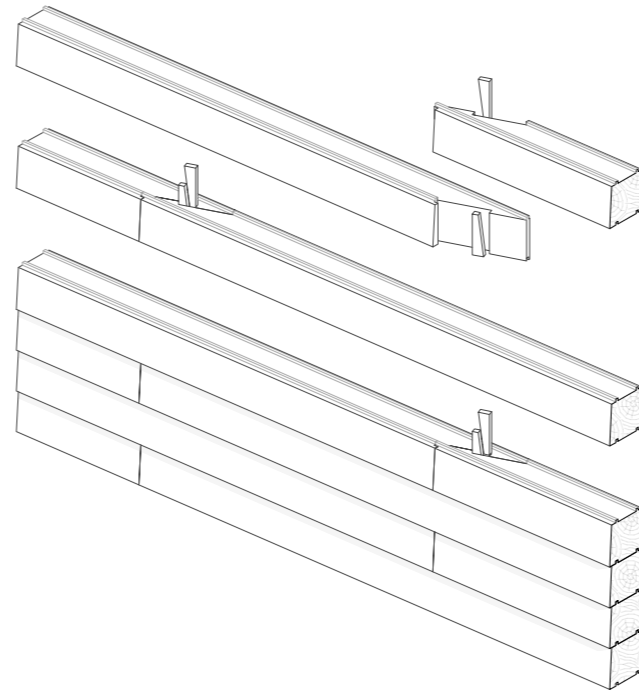


LOG STRUCTURE

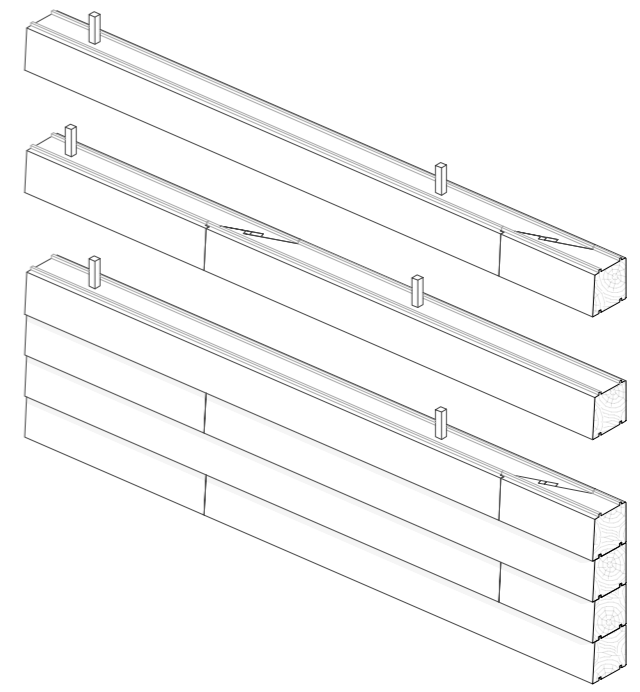




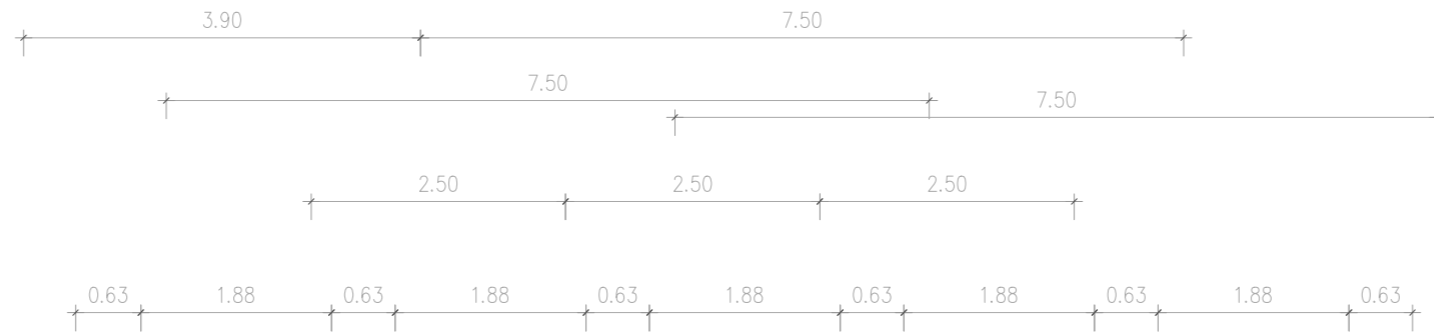
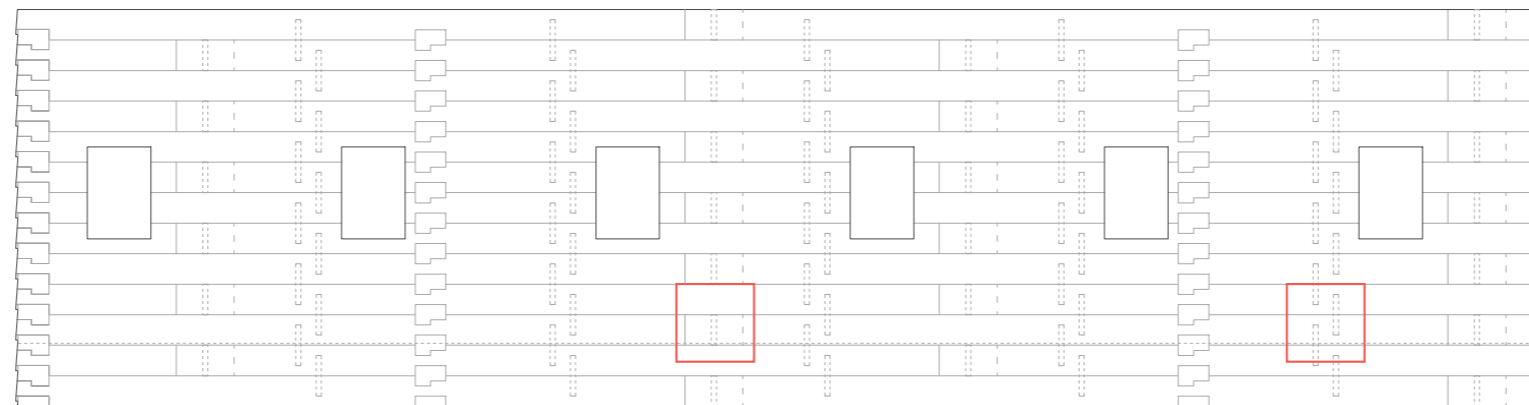
PAIN LOG 30 | 30 cm



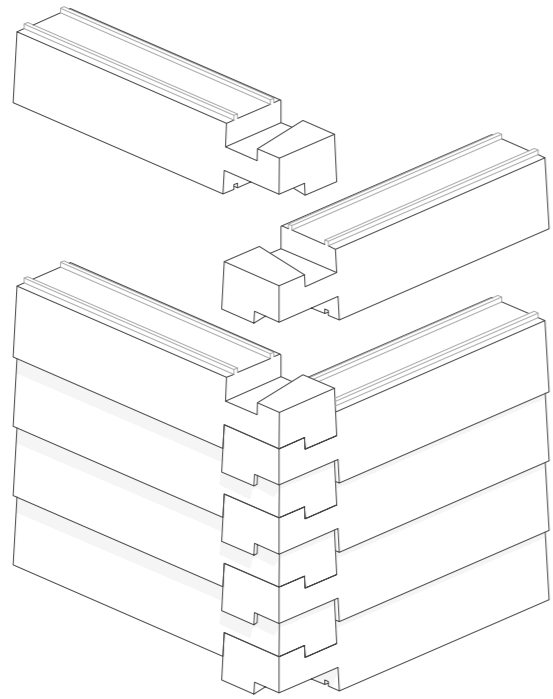
1. HORIZONTAL JOINT



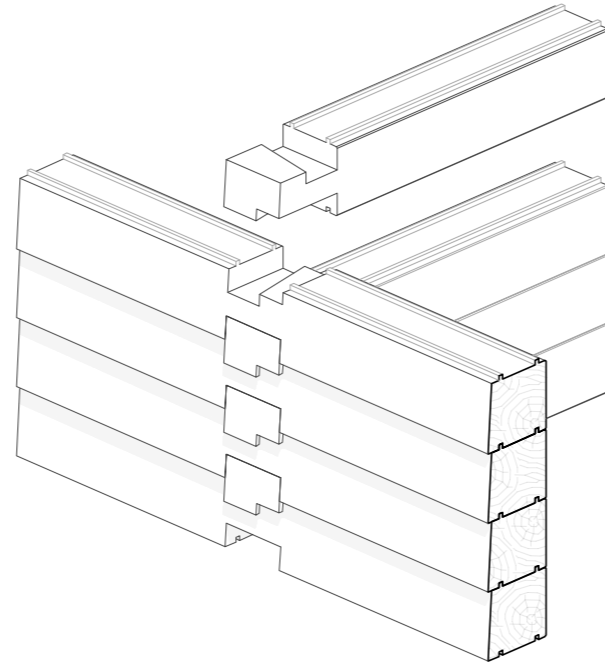
2. VERTICAL JOINT



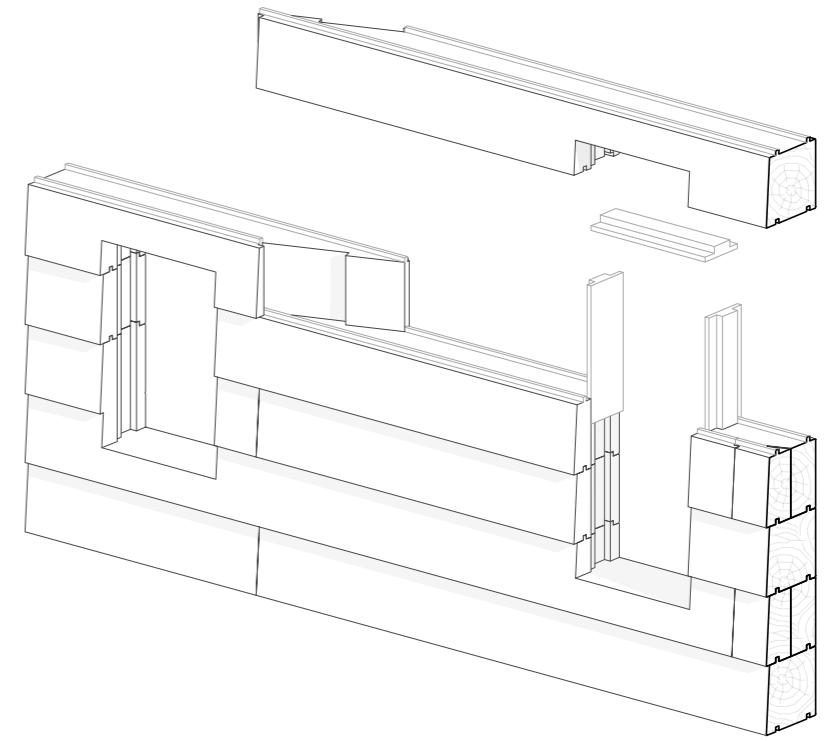
LOG DETAIL



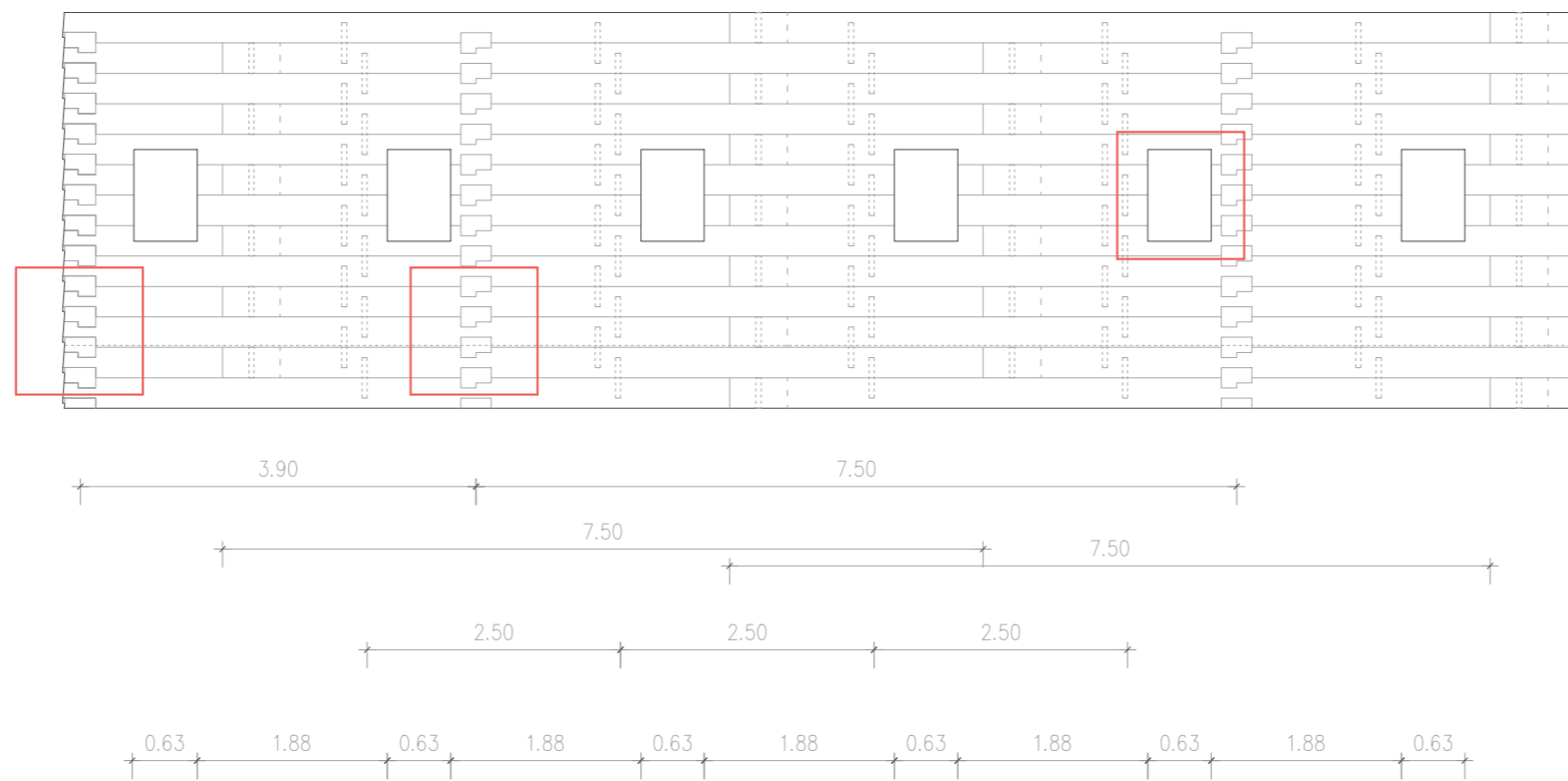
1. CORNER JOINT



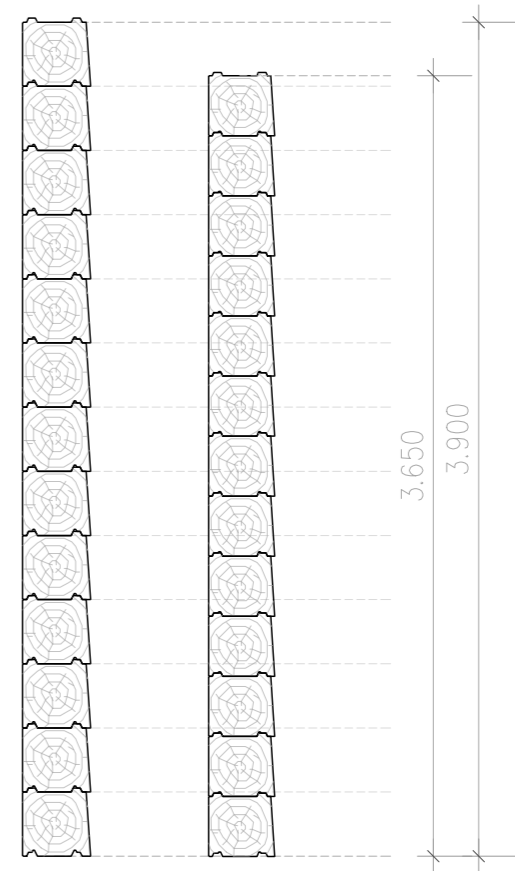
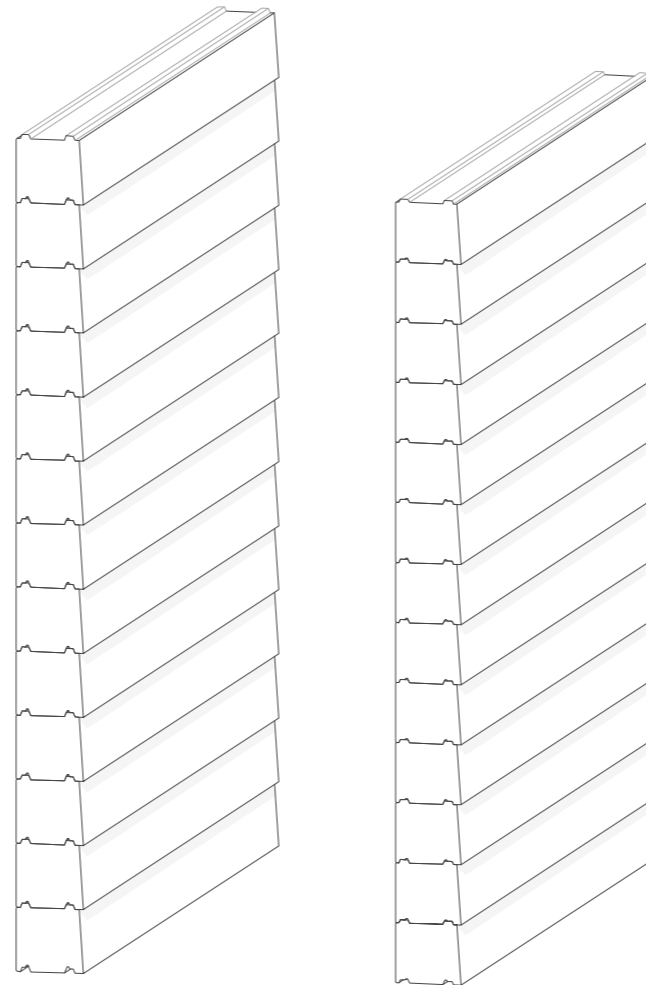
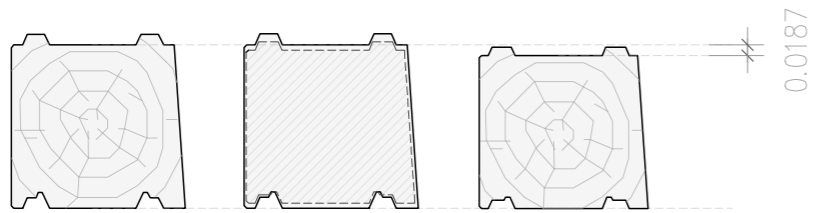
1. PERPENDICULAR JOINT



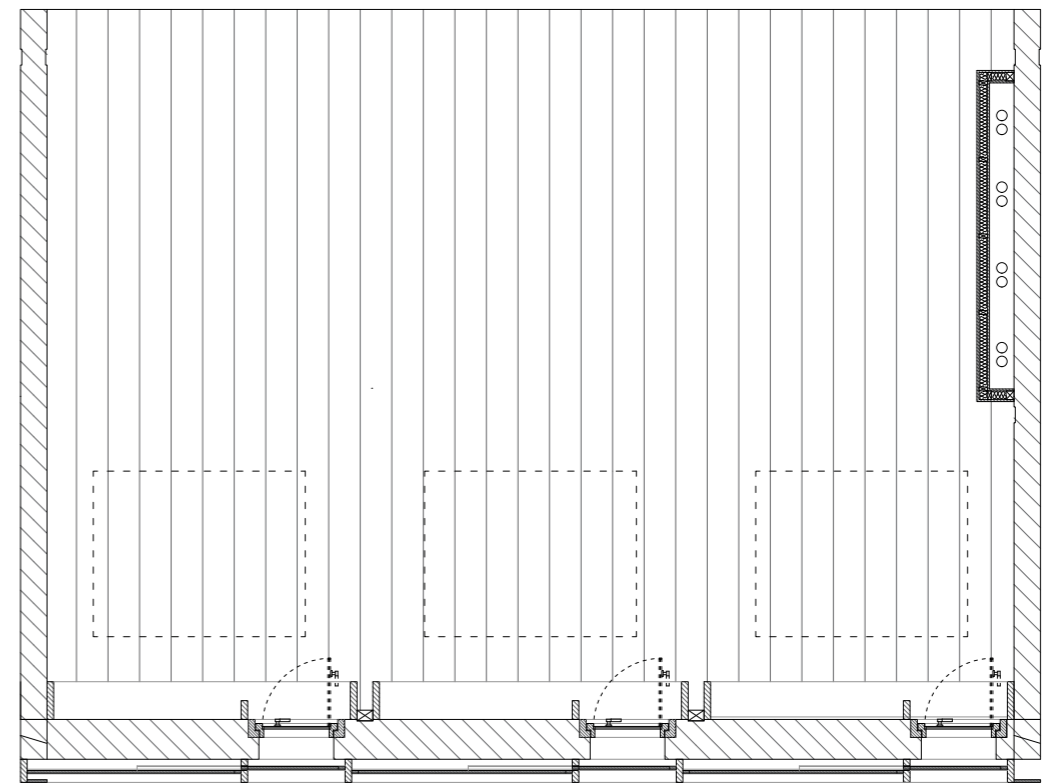
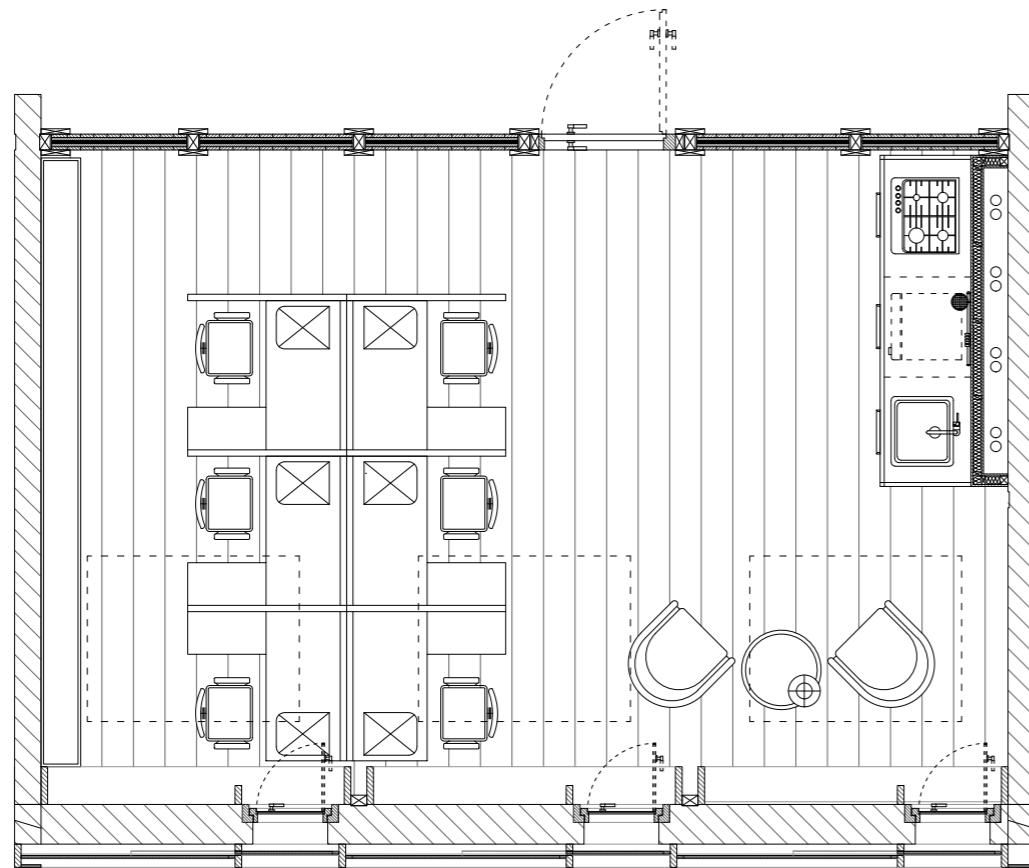
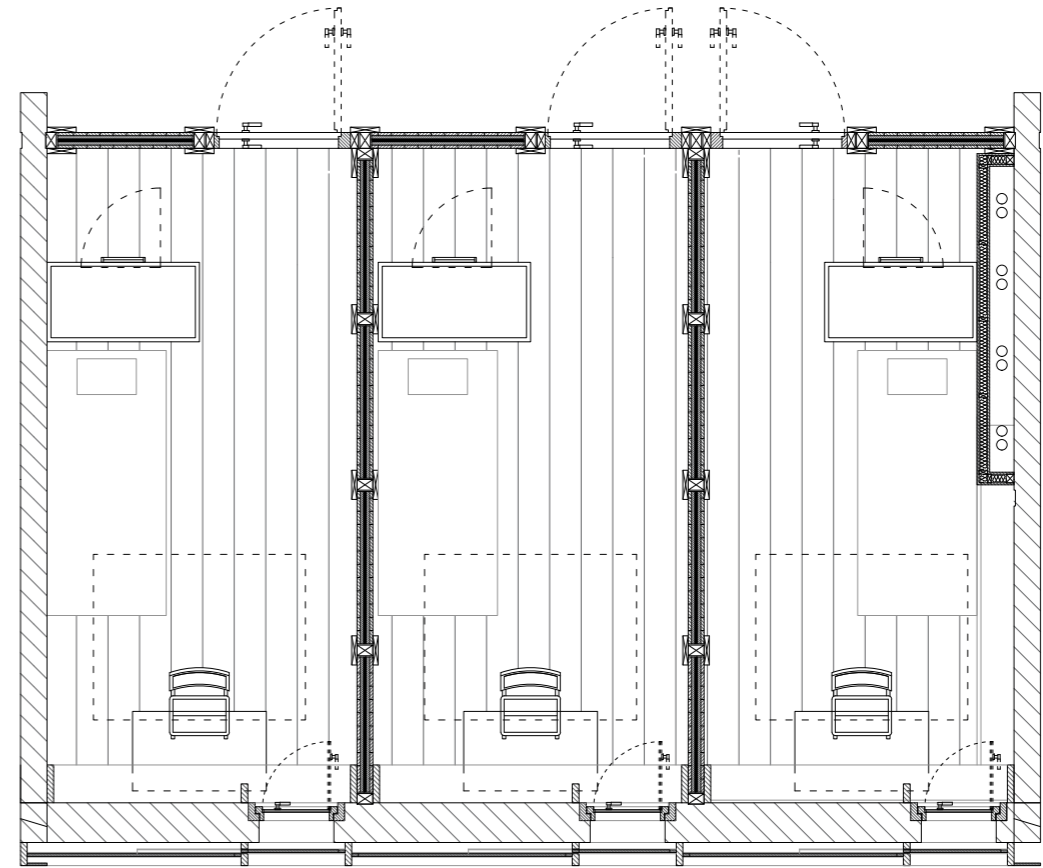
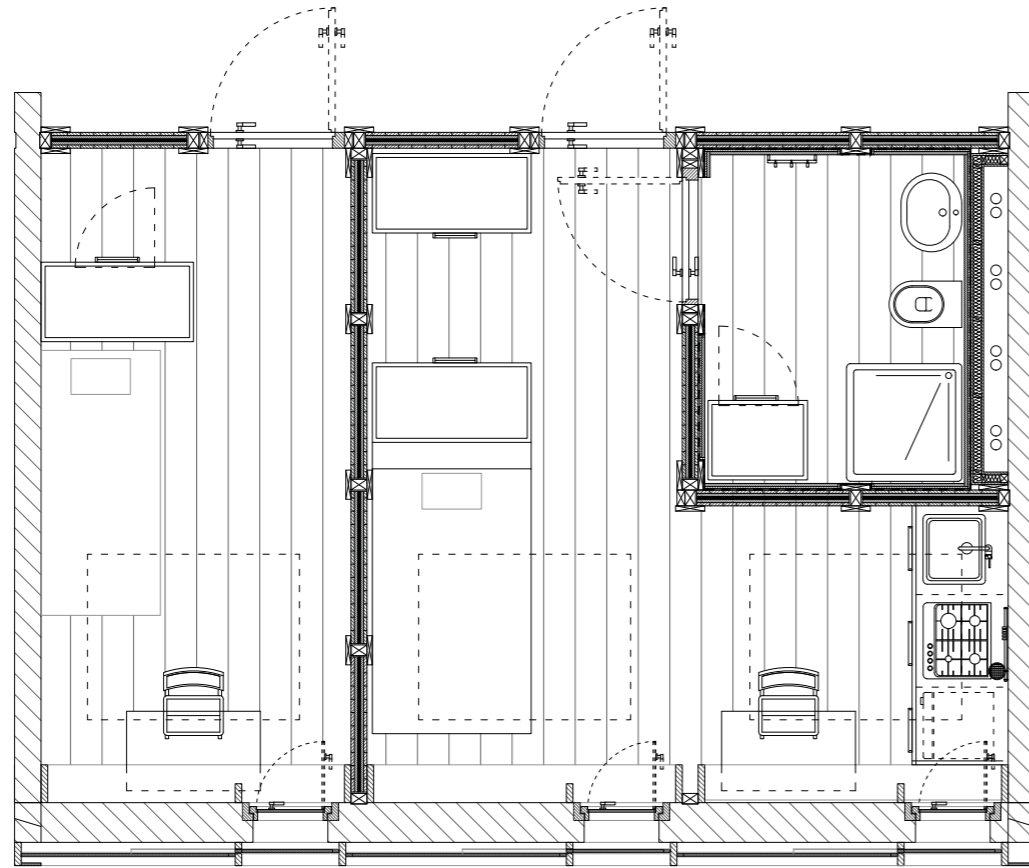
1. WINDOW CUTOUTS



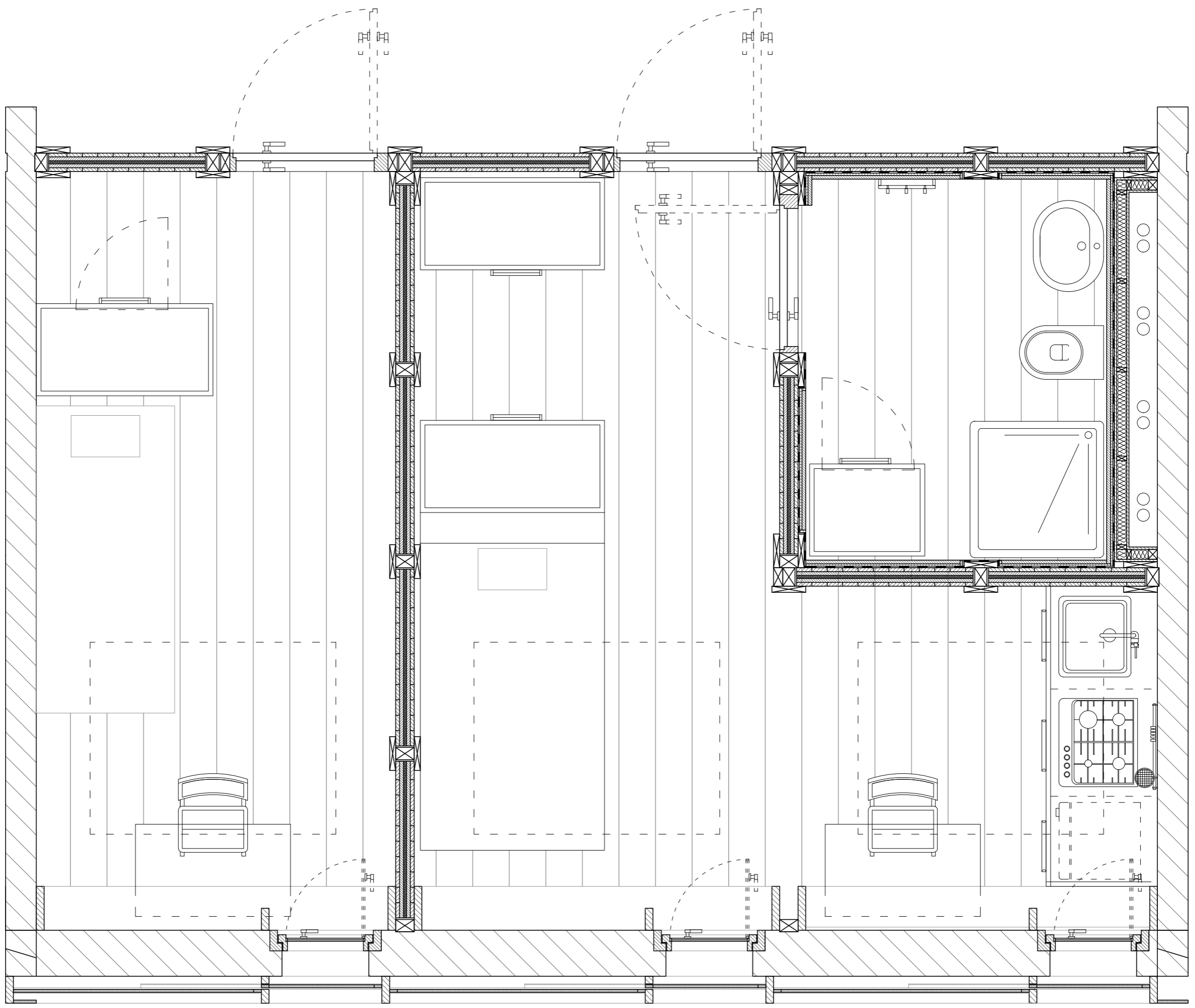
LOG DETAIL



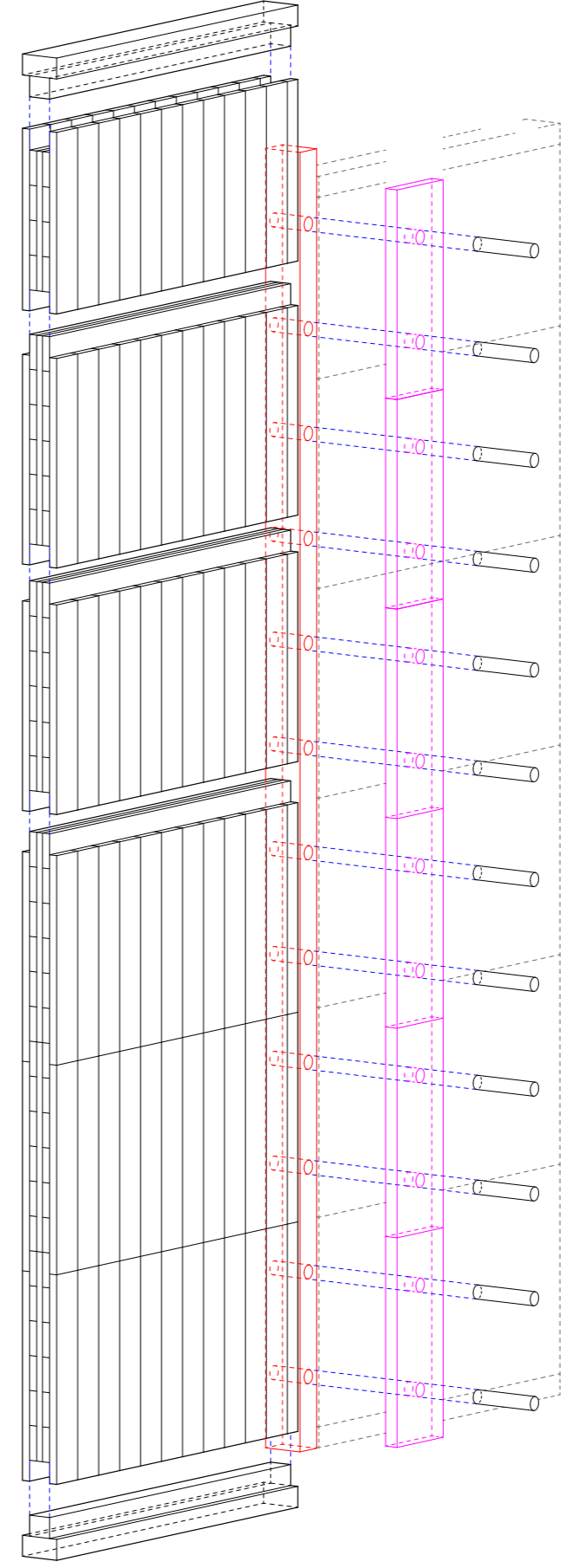
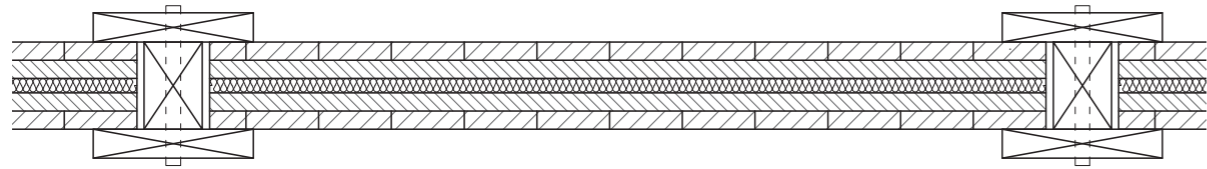
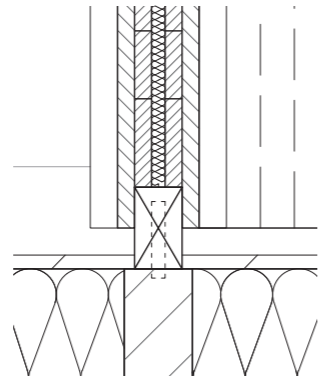
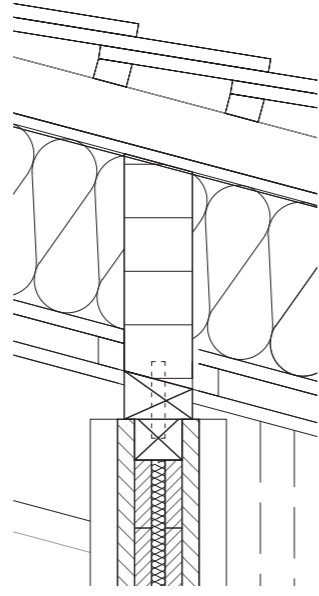
LOG SHRINKING



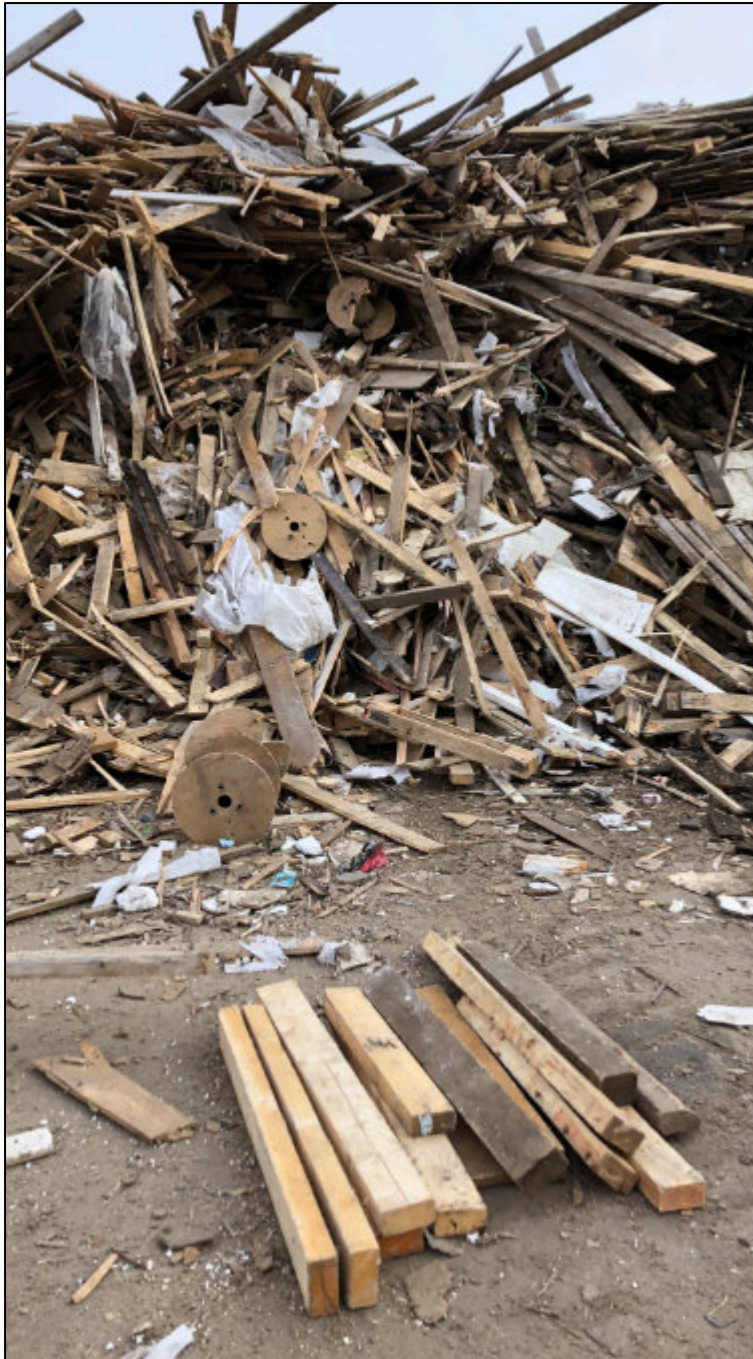
FUNCTIONAL FLEXIBILITY



CELL 1 | 25



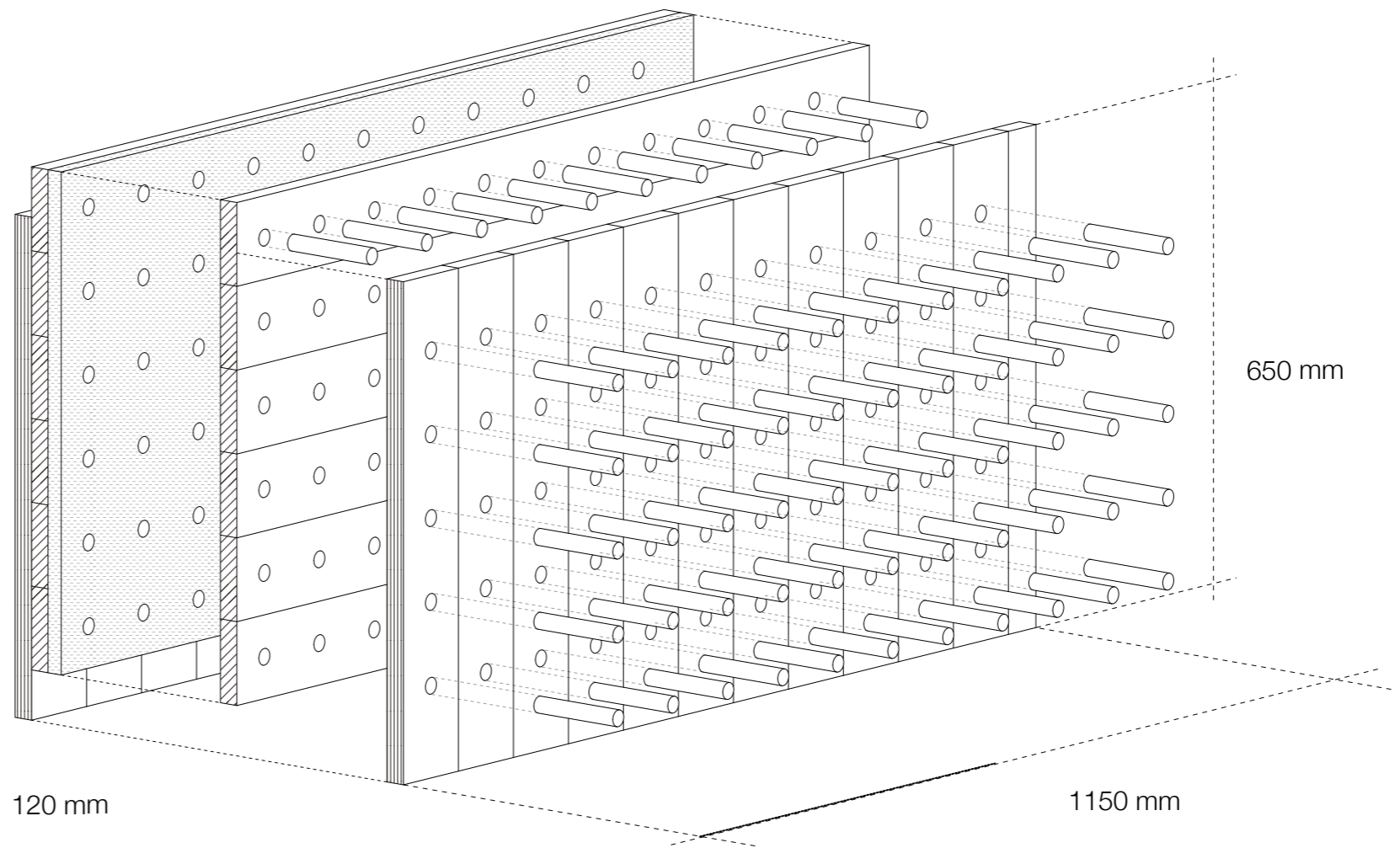
FLEXIBLE WALL SYSTEM



Kork, sound insulation



nur-holz screw's

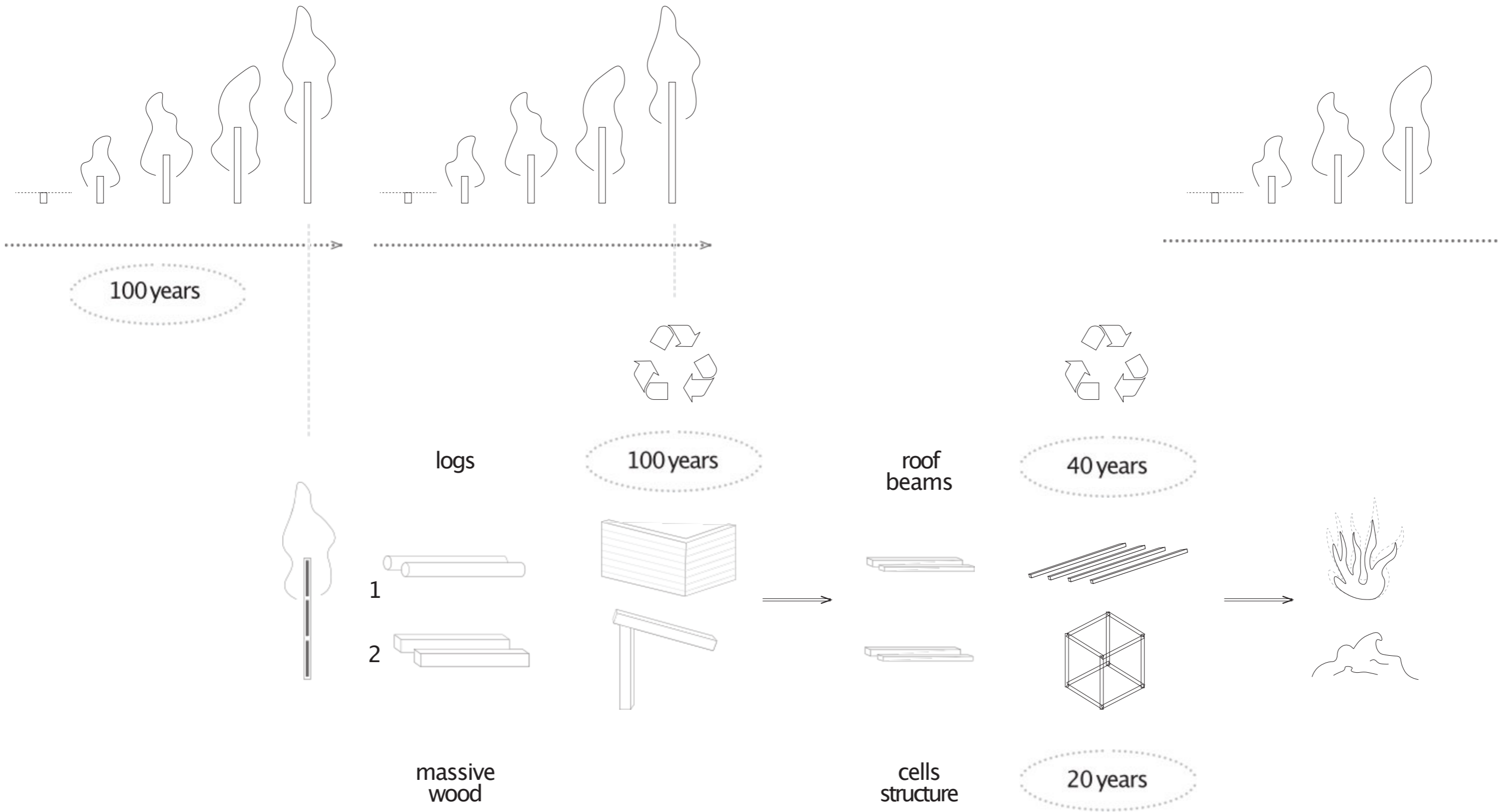


### FLEXIBLE WALL MODULE

Scandinavian wood :  
Pine/Spruce

Wood waste:  
Pine/Spruce

End of life



LIVE CYCLE