

Urban
Experience
26.1.2021



	12.1.	19.1.	26.1.	2.2.	9.2.	16.2.	23.2
What happens?	Start of the course	Lectures & group work presentations	Lectures & group work presentations	Lecture & group work	Lecture & group work	Lecture & group work	Final session
Teaching mode	Online	Online	Online	Hybrid	Hybrid	Hybrid	Hybrid
Contents of contact session	Introduction	Perceived safety	Sense of Community	Knowledge from people in planning	Socially sustainable and health promoting environment	Various urban user groups	Final rehearsal?
	Student's pre-tasks concerning personally meaningful places	Child-friendly environments	Restorative environments	The preparation of PPGIS data for analysis	Activity space modelling	Age-friendly environments	
		Aesthetic Experiences	Place Attachment	Various levels of PPGIS data analysis	Urban walkability	From city streets to suburban woodlands	Final presentations
				Online and onsite PPGIS data analysis	Residential relocation and travel behavior change		
Group work	Group work 1 starts	Group work 1 presentations	Group work 1 presentations	Group work 2 starts	Group work 2	Group work 2	
Individual work							

Peer teaching materials now in MyCourses!

SPT-E5020 - Urban Experience D, 12.01.2021-16.02.2021

Dashboard / My own courses / sp

» Welcome to study urban experiences!
 » Pre-task
 » Group task 1: Peer teaching
 » Group task 1 results: Peer teaching
 » Group task 2: Analysis challenge
 » Group task 2 results: Analysis challenge
 » Individual course work
 » Lectures
 » Additional readings
 » For Aalto users
 » Section 10

Dashboard
 Site home

Assignments Choices Forums Group choices Resources

Turn editing on Syllabus Edit

» Group task 1 results: Peer teaching

	12.1.	19.1.	26.1.	2.2.	9.2.	16.2.	23.2
What happens?	Start of the course	Lectures & group work presentations	Lectures & group work presentations	Lecture & group work	Lecture & group work	Lecture & group work	Final session
Teaching mode	Online	Online	Online	Hybrid	Hybrid	Hybrid	Hybrid
Contents of contact session	Introduction	Perceived safety	Sense of Community	Knowledge from people in planning	Socially sustainable and health promoting environment	Various urban user groups	Final rehearsal?
	Student's pre-tasks concerning personally meaningful places	Child-friendly environments	Restorative environments	The preparation of PPGIS data for analysis	Activity space modelling	Age-friendly environments	Final presentations
		Aesthetic Experiences	Place Attachment	Various levels of PPGIS data analysis	Urban walkability	From city streets to suburban woodlands	
Group work	Group work 1 starts	Group work 1 presentations	Group work 1 presentations	Group work 2 starts	Group work 2	Group work 2	

Panopto
 Live sessions
 No live sessions
 Completed recordings
 19.1 Second session
 19.1 First session
 Podcast feeds
 Audio podcast:RSS
 Video podcast:RSS
 Links
 Course settings
 Download recorder(Windows | Mac)

Completion Progress
 There are no activities or resources with activity completion set or no activities or resources have been selected. Set activity completion on activities and resources then configure this block.

Latest announcements
 Add a new topic...
 Marketta Kyttä 8 Jan, 19:48
 Start of the course
 Marketta Kyttä 5 Jan, 14:39
 Please answer a small survey

AllWell?2021

“Dear second-year bachelor’s student and first-year master’s student – how are you?”

Please answer the study wellbeing questionnaire that we will send to you soon.

You will receive feedback based on your responses and help us do our work better. Thank you!”

The questionnaire will be open from
10 February to 24 February 2021.



Sense of community



Concepts

Sense of
community

The sense that one is part of a mutually supportive network of relationships

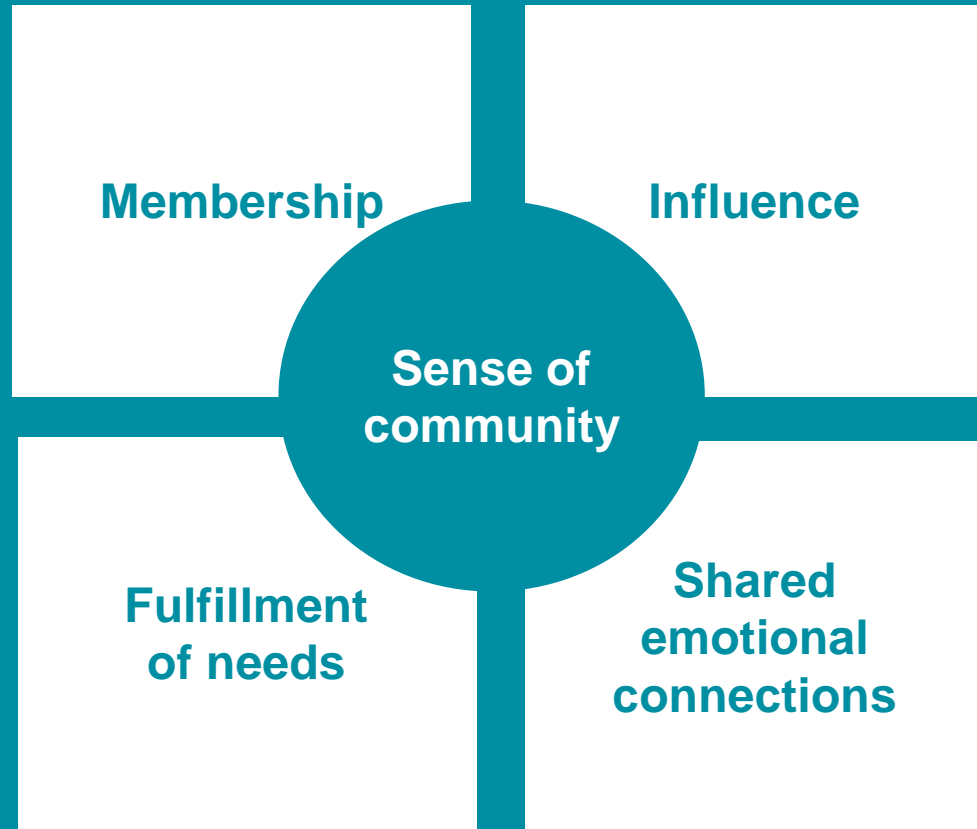


Neighbouring

The activities engaged in by neighbors and the relationships these generates among them



The various components of sense of community



McMillan and
Chavis (1986)

The hierarchy of urban communities

Kusenbach (2008)

Enclaves

Comfort, belonging

Walking distance neighbourhoods

Familiarity

Street blocks

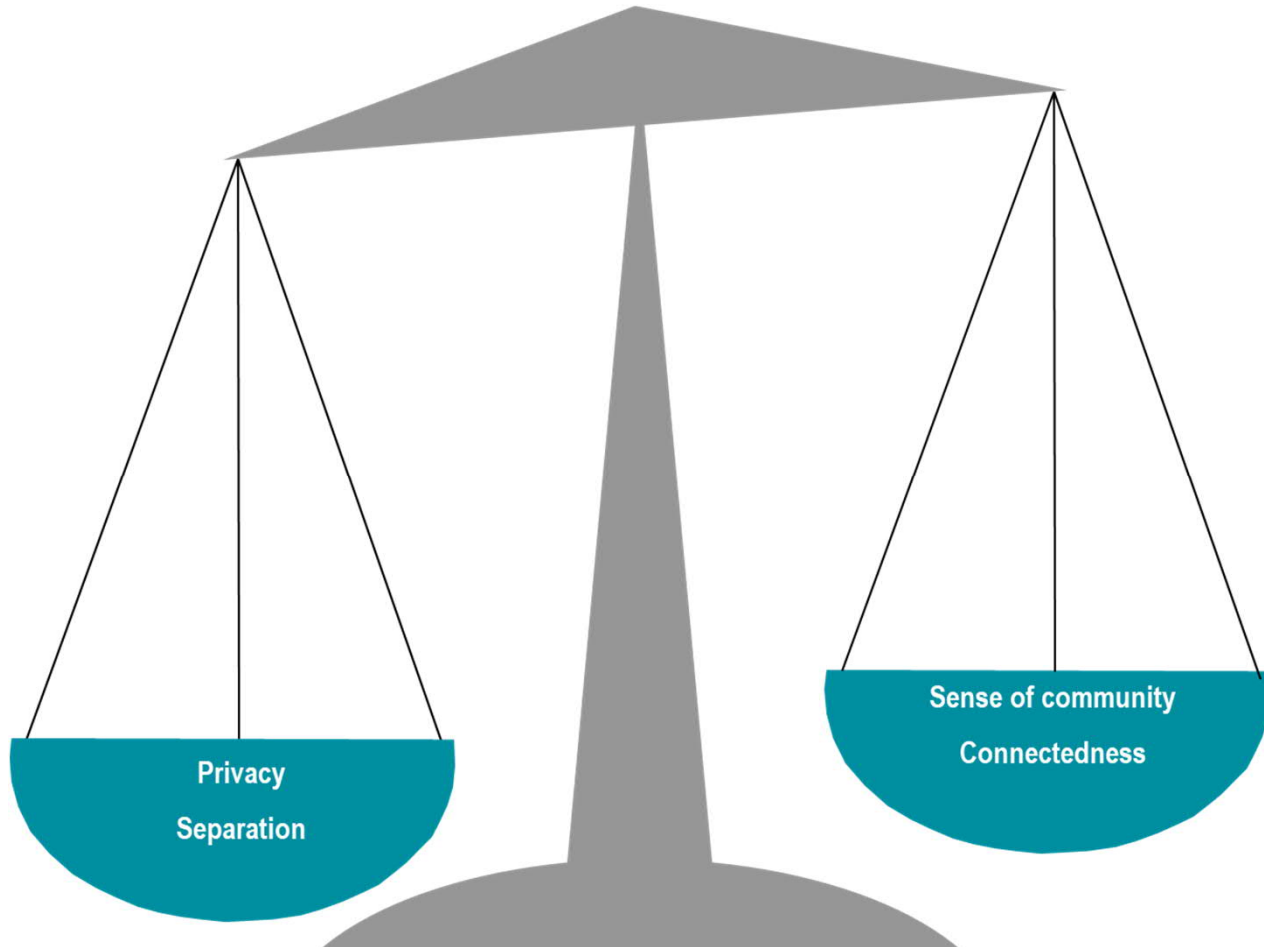
Tolerance, responsibility

Microsettings

Trust, dependency

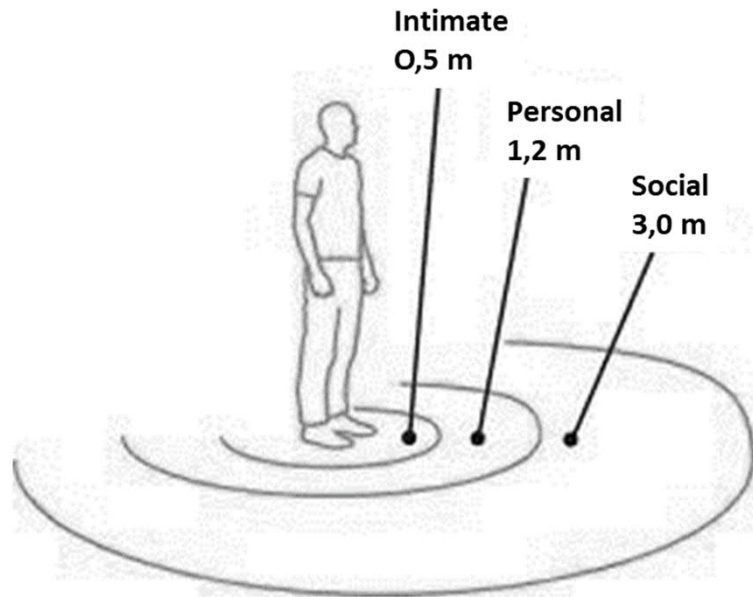


Balancing privacy and sense of community



Proxemics

Hall, 1963



Density & sense of community

Forms of social interaction:

- **Sozializing**
 - Visiting
 - Parties
 - Sports
 - Going to Sauna
 - etc
- **Shared responsibility**
 - Waste management
 - Roads
 - Sharing devices
 - Etc.
- **Helping**
 - Gardening
 - Farming
 - Borrowing
 - Transportation
 - etc.

Conflicts:

- Noise
- Dogs
- Snow
- Road management
- Building projects
- Borders
- Social control
- Different lifestyles
- Smells
- Etc.



It is shocking that each time if there is something that should be talked about, you have to ask a policeman to call.

You almost have to hide when you go around in your own property.

We have not said a word for 20 years.

Toi olihan kaikkien kanssa sillä lailla niinku puheväliä ... mutta kylä nykyään se kyläsiemen ja kaikki sellainen on muuttunu.

Ihmiset on paljo menny ulkopuolelle joihin että se on muuttanu sitä sellasia kanssakäymisiä.

Toiseen naapuriksi päin ei oo niin kovin lämpimät välit, jottei sinä pahemmin kanssakäymisiä oia.

Tuntuu näkyyttävästä, jotta aina jos on joku asia niin naapurin pitäa panna soittamaan toisele.

Pitää naapurita meikeen lymys kulukia omalla matilla.

Tasoaan välillä on se tuloa mieheen, jotta aika lähellä nolo on. Kylä siihen ny jotens on kuitens sili sopeutus.

Naapurit tietää tuka tulo käymään, näköä ketä sinä kulutop.

Villää ystävyitä.

Nyt ei oo viisim 20-vuotehen puhuttu yhtää mitää.

Ei meillä oo kinkä ollu yhteistä konetta, ei ap koskaa tarvittu, eikä kaviita tänä päivänäkää.

Hiemmän päälle ja koko elämä ei tämä mitää ihanteellinen päikä tääläinen tiiä kylä, kylä se pateri on pidäusen väljyyttä.

Everyone are in their own corners.

Jokainen oma nurkassaan.

Chilly friendship.

We have never had shared devices, never needed to have, not even today.

New urbanism & sense of community

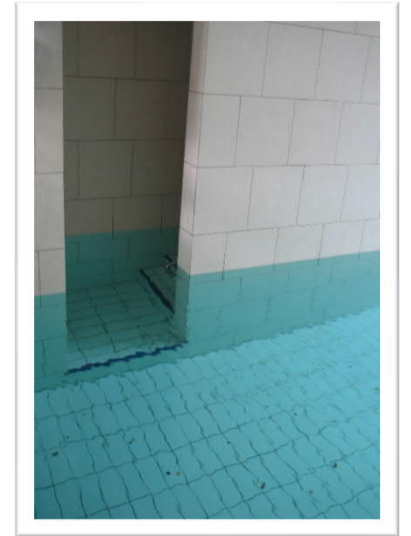
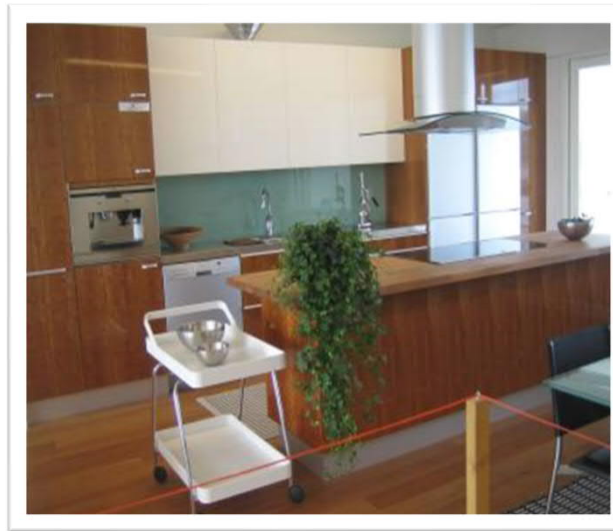
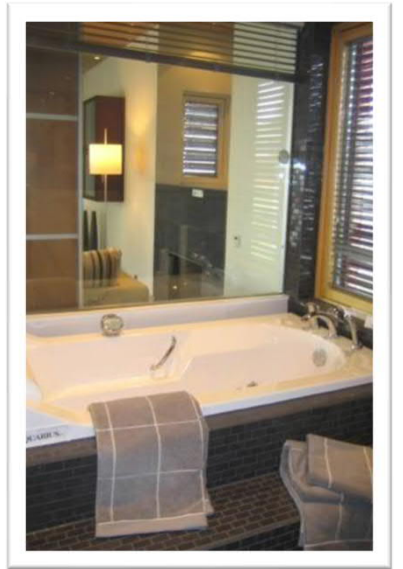


Seaside, Florida



Kentlands, Maryland

New urban activities and new sense of community?



New urban activities and new sense of community?

