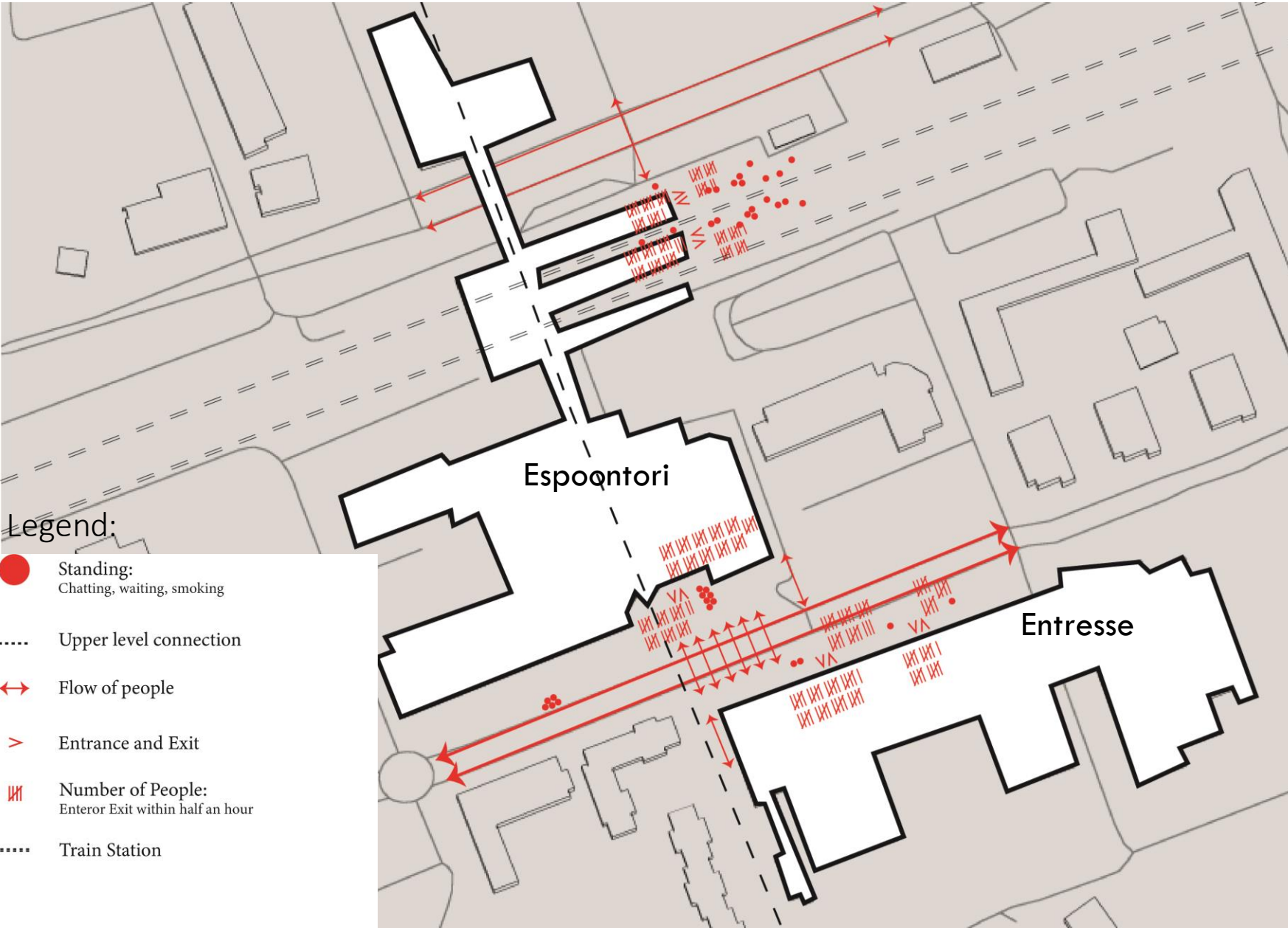


Behavioural Mapping in Leppävaara + Espoon keskus

Mahsa Tajalli, Ville Leppänen
and Fanni Kuittinen
SPT-E5020



Observations in Espoon keskus



Second-level connection from residential area to the train station



Pedestrian crossing between Espoonatori and Entresse

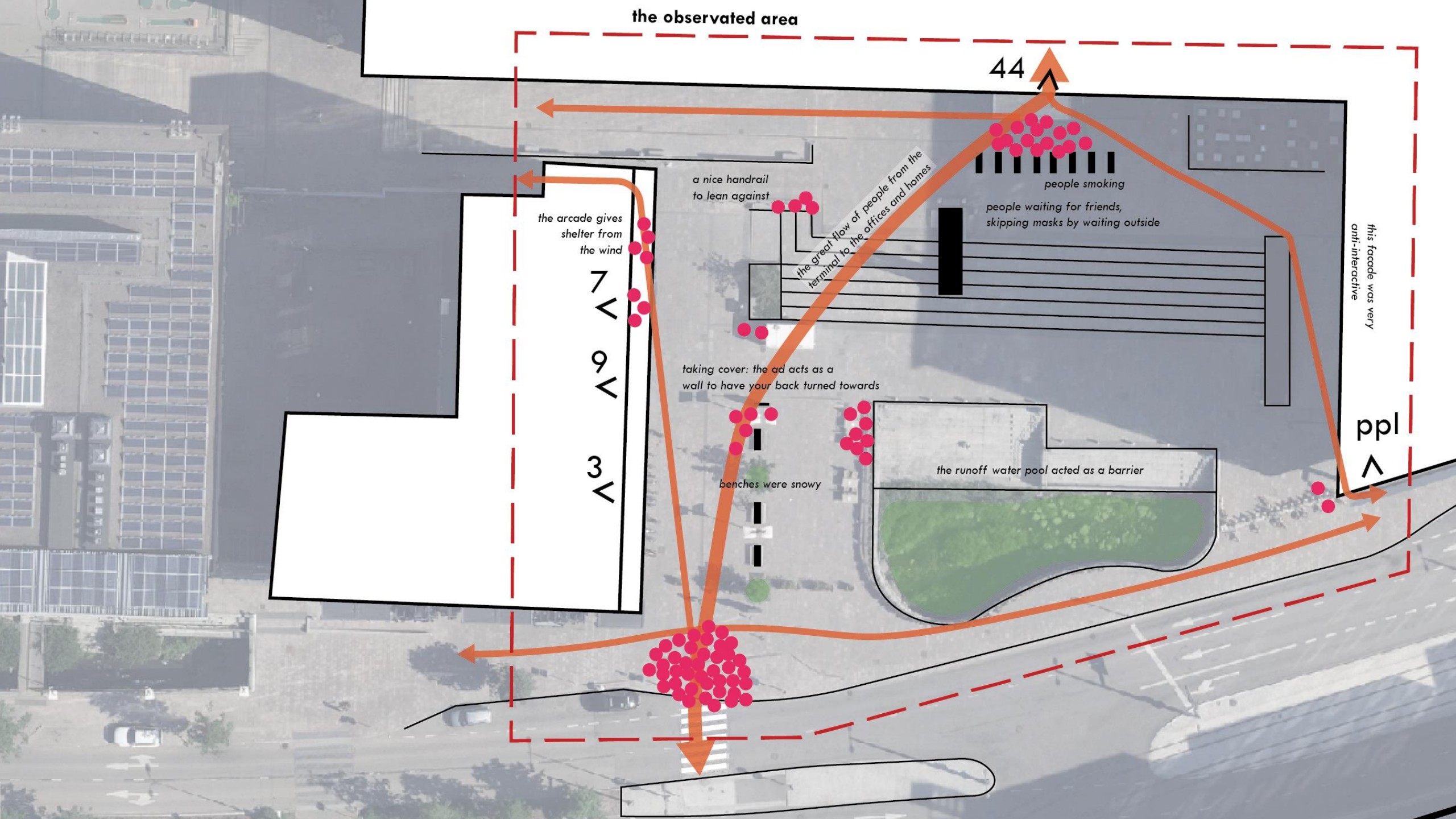


Espoon keskus Train station



Observations in Leppävaara

the observed area



44

the arcade gives shelter from the wind

7
V
9
V
3
V

a nice handrail to lean against

the great flow of people from the terminal to the offices and homes

people smoking

people waiting for friends, skipping masks by waiting outside

this facade was very anti-interactive

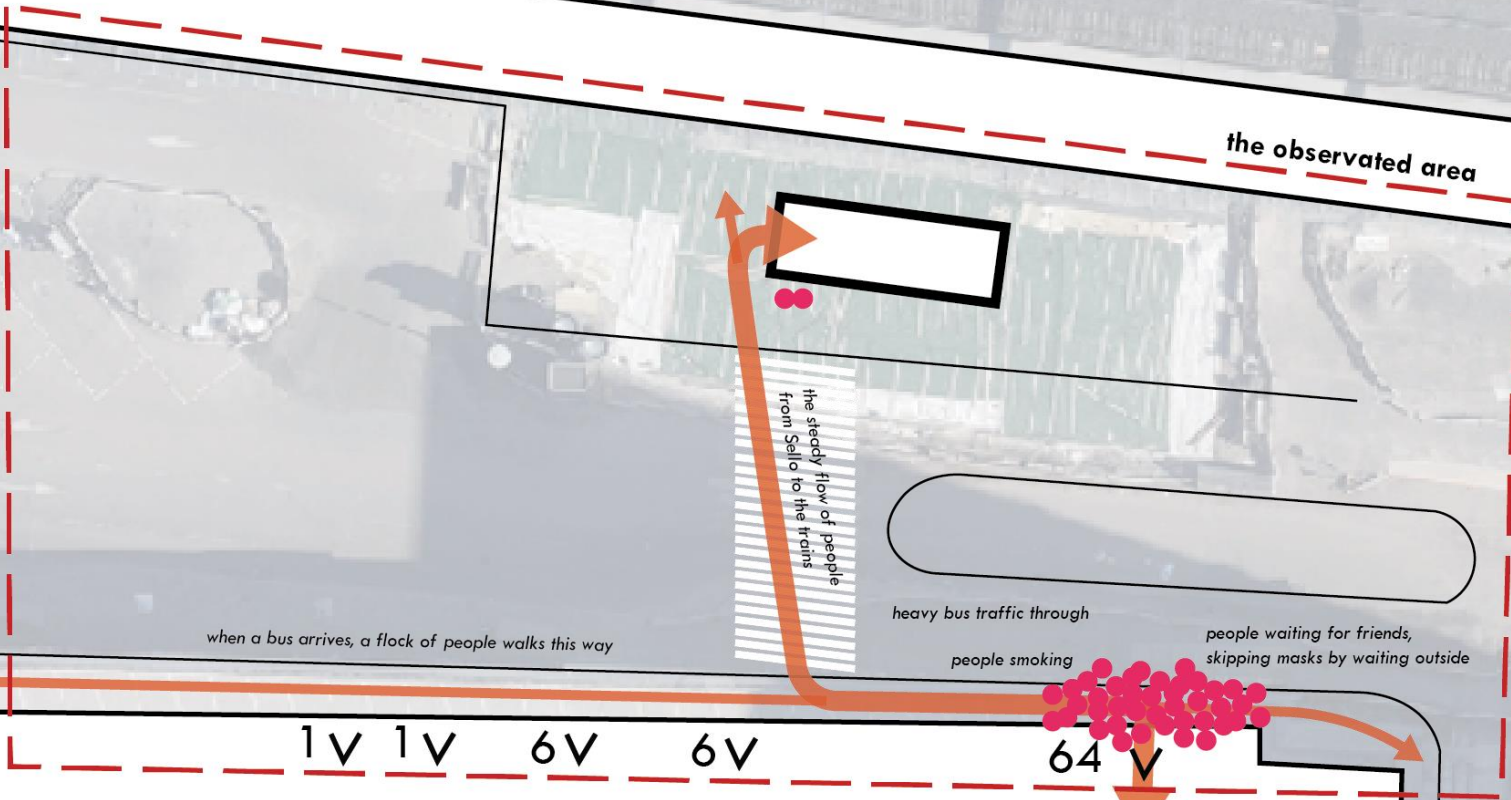
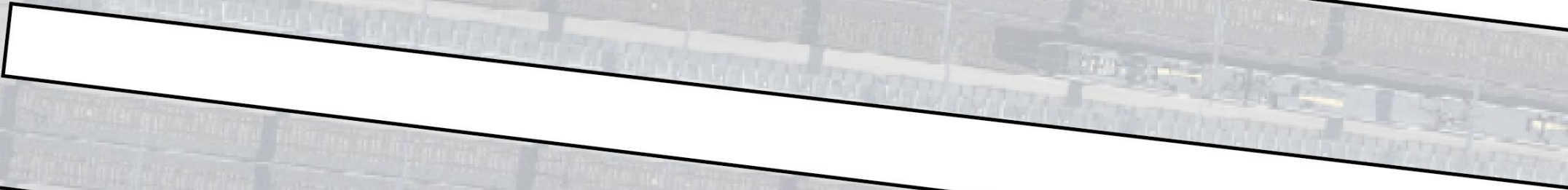
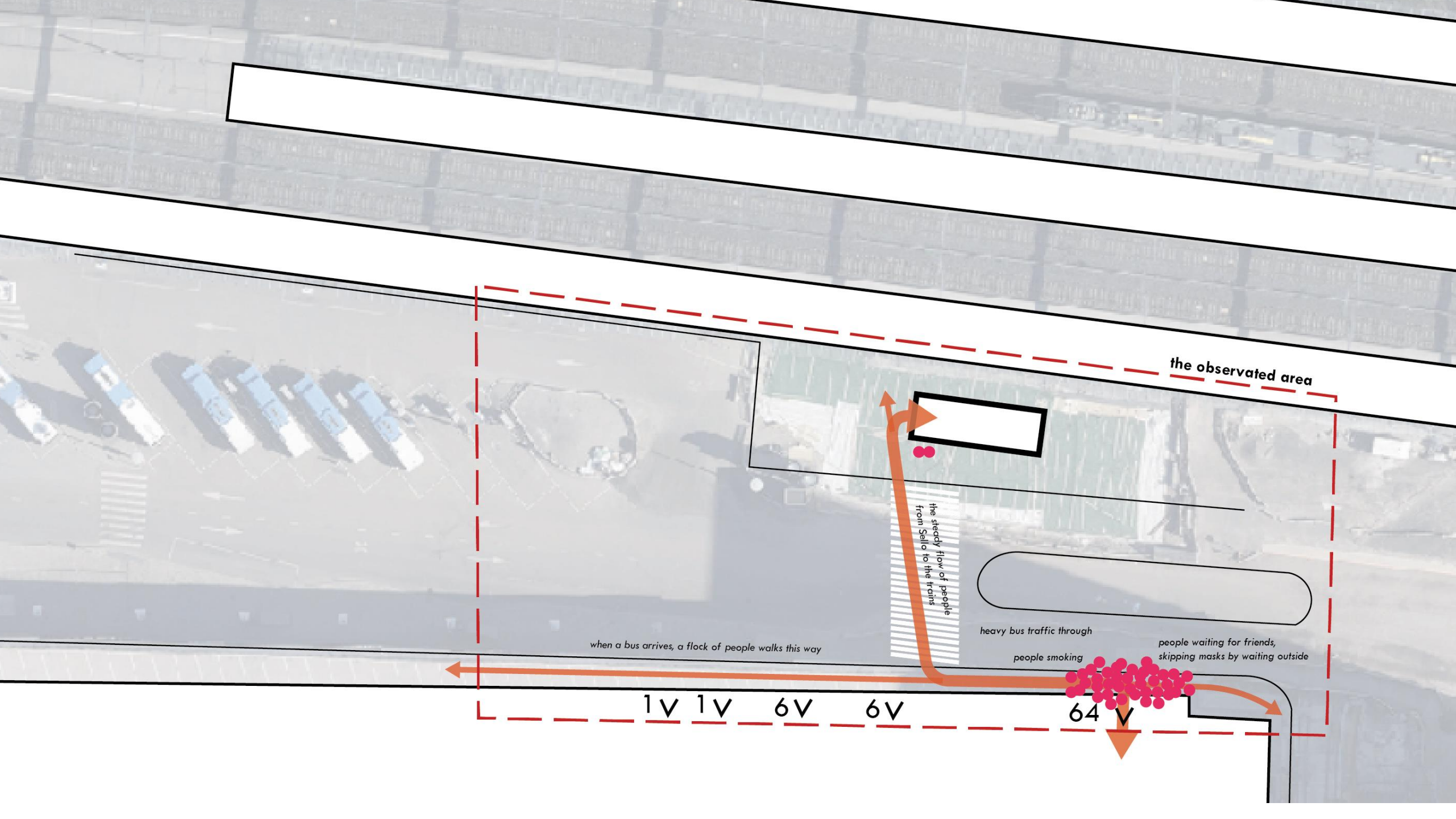
taking cover: the ad acts as a wall to have your back turned towards

benches were snowy

the runoff water pool acted as a barrier

ppl

V



the observed area

the steady flow of people from Sello to the trains

when a bus arrives, a flock of people walks this way

1V 1V 6V 6V

heavy bus traffic through

people smoking

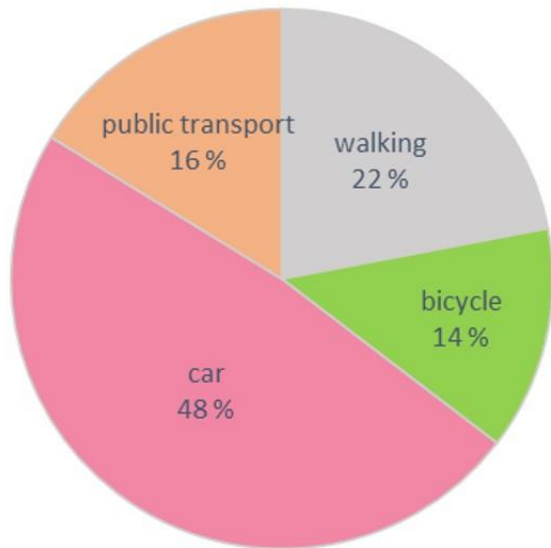
64 V

people waiting for friends, skipping masks by waiting outside



Survey Results: Espoon keskus

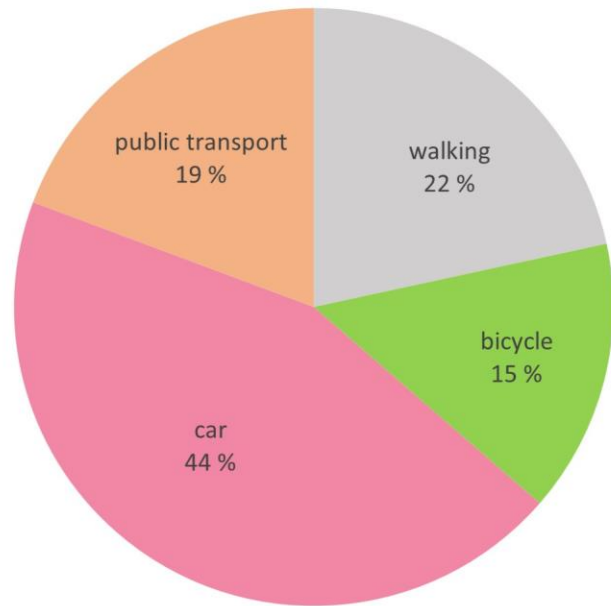
Modes of Transport in Espoon keskus



Perceived quality of environment	(0-10)
Personal	5.7
Functional	5.5
Social	4.2
Atmosphere	4.0
Aesthetics	4.0
Average (everyday markings)	56

Survey Results: Leppävaara

Modes of Transport in Leppävaara



Perceived quality of environment	(0-10)
Personal	6.2
Functional	6.9
Social	5.6
Atmosphere	5.3
Aesthetics	5.4
Average (everyday markings)	6.3

Analysis

- **Factors influencing the flows of people:**
 - Time of observation
 - Cold and windy weather
 - Corona restrictions, e.g. remote work
- **Necessary activities:** e.g. walking to bus/train station, smoking at designated spots
 - dominant type of activities
- **Social activities:** talking to a friend/partner, less common at the time of observation, not observed between strangers
- **Optional activities:** talking on the phone
- **What kinds of affordances (Gibson, 1979) do the sites provide/do not provide?**
 - + Passing through, no major obstacles
 - Spending time and engaging in social interaction
 - Creative use of space

Improvement suggestions

Existing situation:
Long crossing



Suggestion:
Shorter crossing



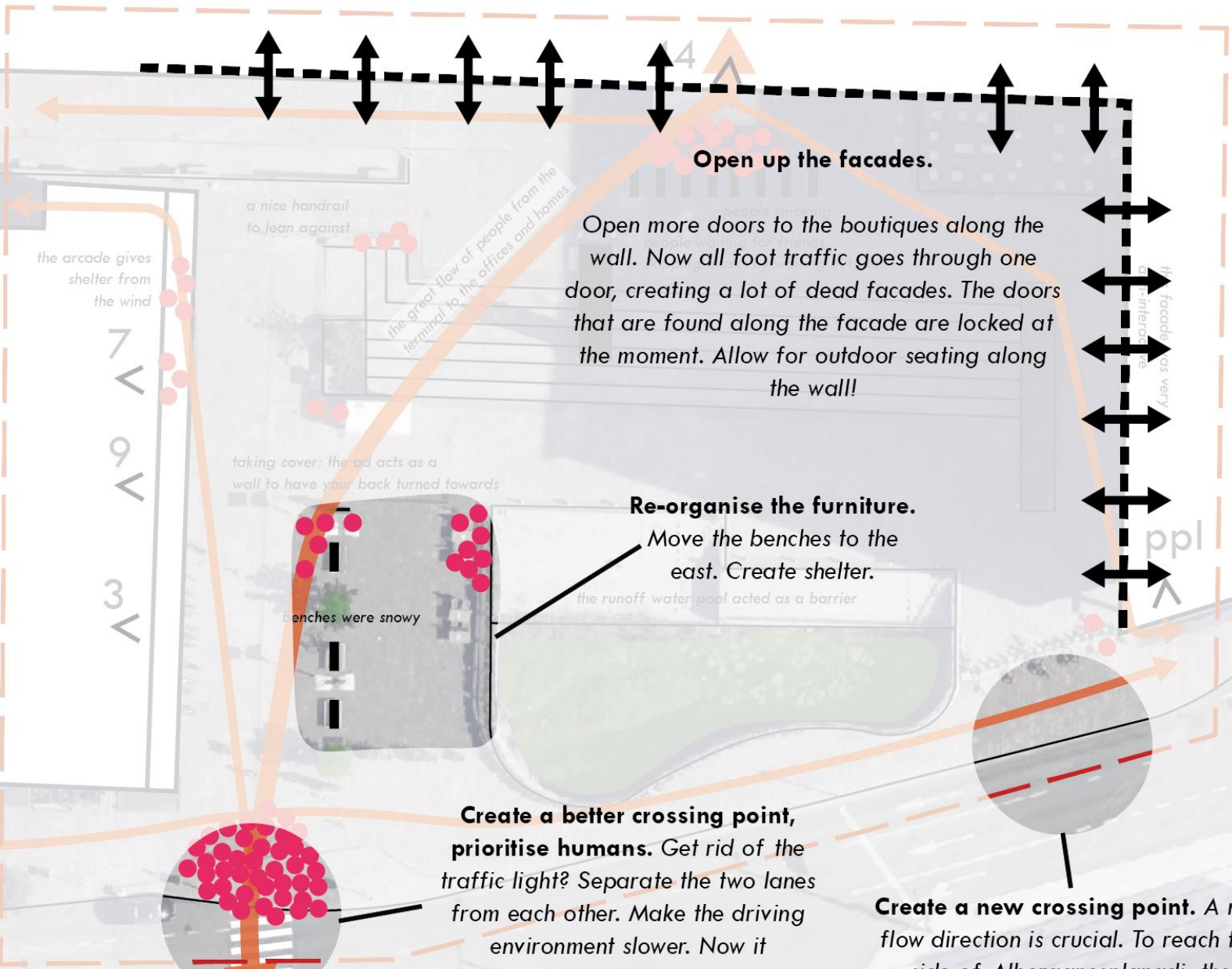
Existing situation:
Outdoor sitting



Suggestion:
Inner transition



the observed area



Open up the facades.

Open more doors to the boutiques along the wall. Now all foot traffic goes through one door, creating a lot of dead facades. The doors that are found along the facade are locked at the moment. Allow for outdoor seating along the wall!

Re-organise the furniture.

Move the benches to the east. Create shelter.

Create a better crossing point, prioritise humans. Get rid of the traffic light? Separate the two lanes from each other. Make the driving environment slower. Now it encourages higher speeds.

Create a new crossing point. A new flow direction is crucial. To reach this side of Alberganesplanadi, the western crosswalk is a **huge** diversion.

the arcade gives shelter from the wind

7
6
3

a nice handrail to lean against

the great flow of people from the terminal to the offices and homes

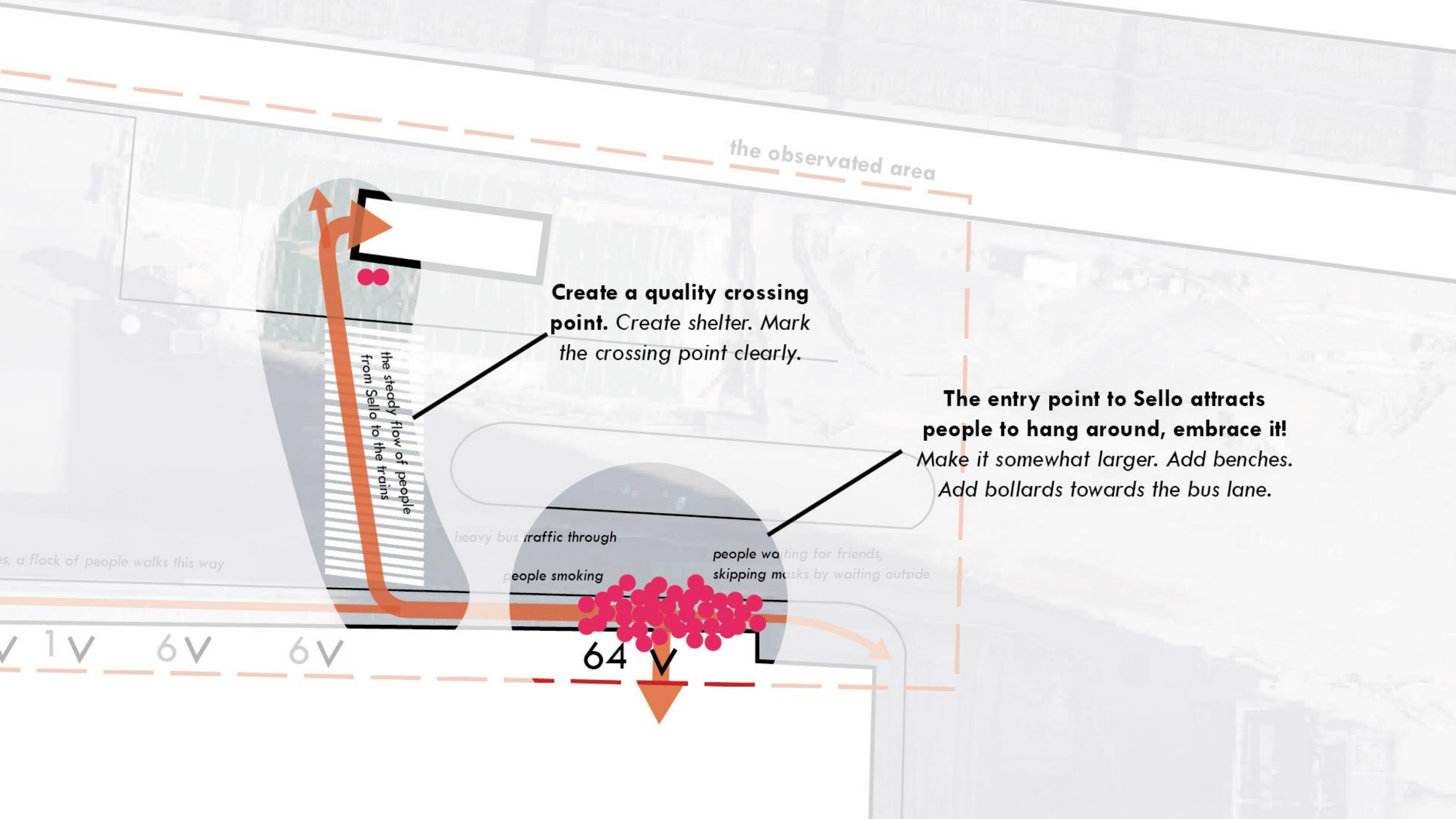
taking cover: the ad acts as a wall to have your back turned towards

benches were snowy

the runoff water pool acted as a barrier

if facades are very

ppl



the observed area

Create a quality crossing point. Create shelter. Mark the crossing point clearly.

the steady flow of people from Sello to the trains

heavy bus traffic through

people smoking

people waiting for friends, skipping masks by waiting outside

The entry point to Sello attracts people to hang around, embrace it!
Make it somewhat larger. Add benches.
Add bollards towards the bus lane.

es, a flock of people walks this way

1V 6V 6V 64V

Thank you :)

