

# Virtual Desktop Instructions

This manual describes how to use the virtual desktop and how to access the NxtStudio software installed on the Aalto Virtual Desktop (VDI). The VDI can be used in Aalto as well as at your respective houses.

Students using mac or Linux can make use of the VDI as NxtStudio is only available for windows.

## 1.1 Guide to Start-up the VDI

- 1) Go to <https://vdi.aalto.fi>
- 2) Select **VMware Horizon HTML Access**, refer to figure 1
- 3) Type your **Aalto username** and **password**, and then click Login; refer Figure 2

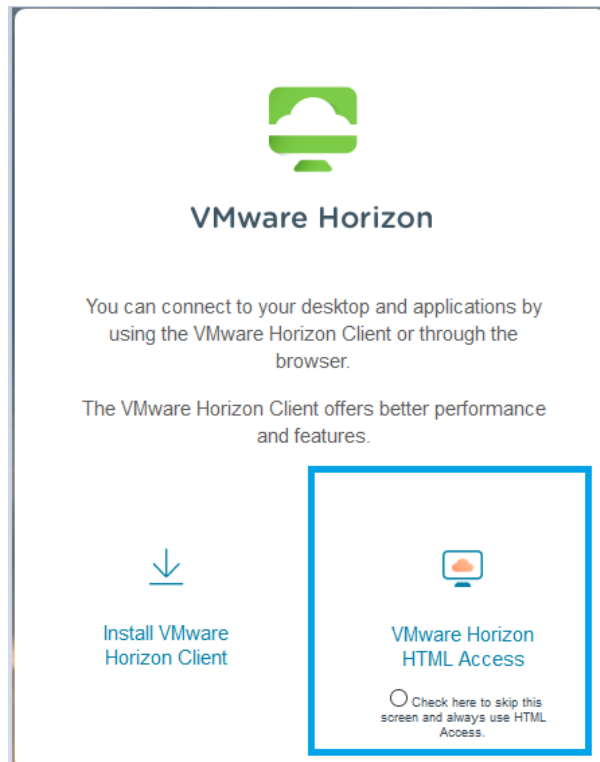


Figure 1

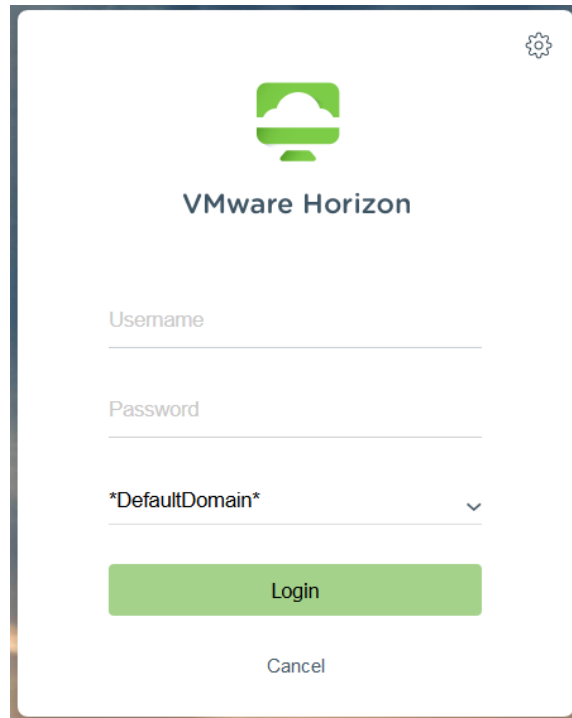


Figure 2

- 4) Once you login, select the machine “Windows 10”. Refer to figure 3.  
**Do NOT select “Windows 10 3D”**

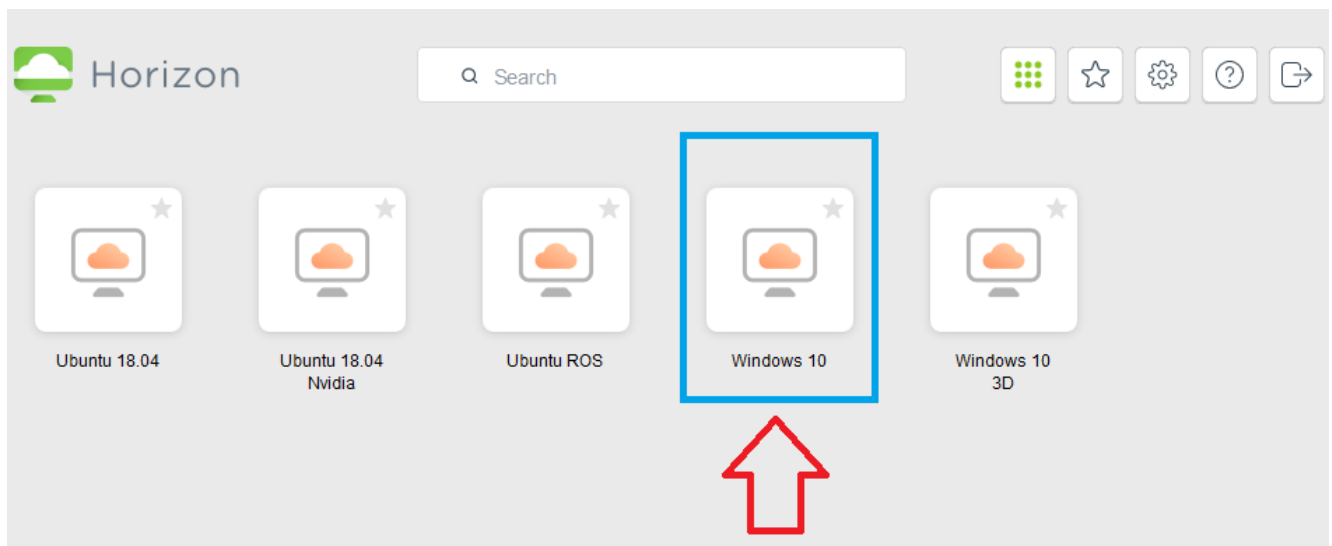


Figure 3: Select “Windows 10” Machine

- 5) Once you select the “Windows 10” machine, the VDI will connect to the virtual machine with the software installed. Wait for a few minutes for the system to start.

As per the Aalto IT Department: - “It takes over one minute to load Windows Desktop and after that another minute to initialize OneDrive”

## 1.2 Starting the nxtSTUDIO 3.0.1 SP1 Software

Once the 'Windows 10' machine has started and initialized properly go to the windows start menu and scroll to NxtStudio, and **select the 'nxtSTUDIO'** option as shown in Figure 4

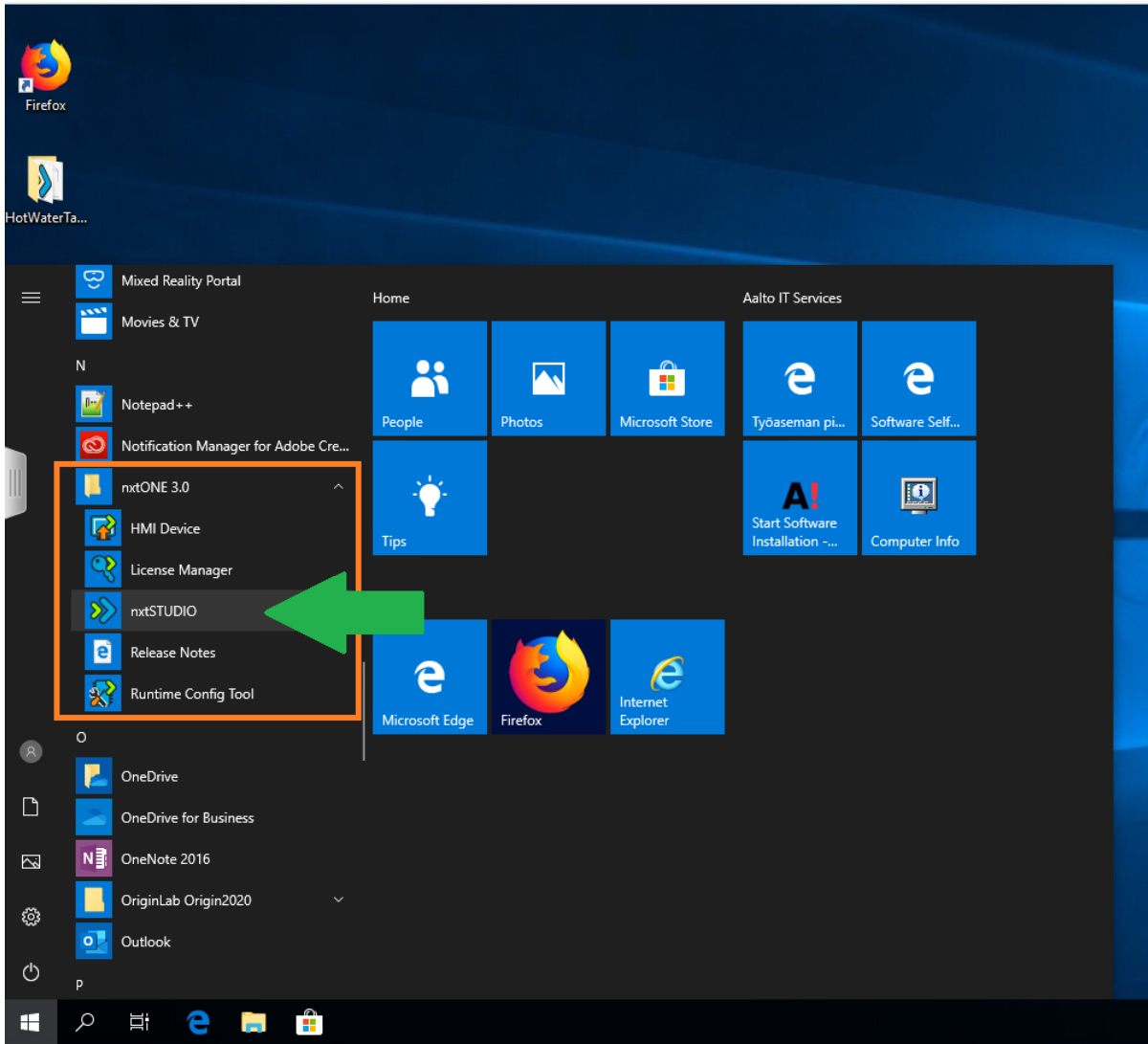


Figure 4: Opening nxtStudio

You can also search for “nxtSTUDIO” in the windows search option and open the “nxtSTUDIO” application as shown in figure 5

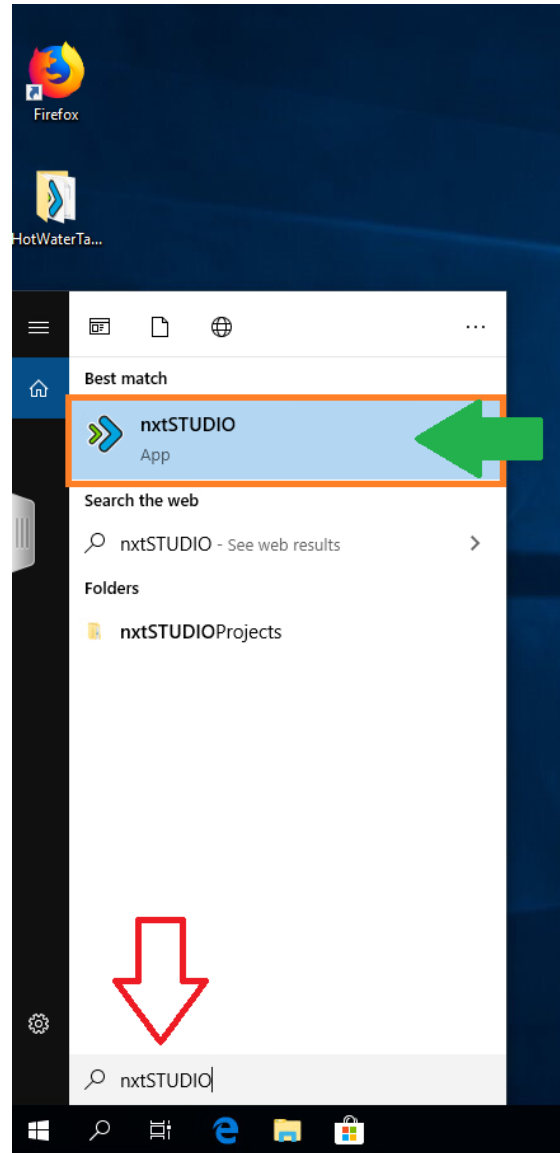


Figure 5: Opening nxtSTUDIO

**Note:**

You can also install the VM Ware Horizon Client in your personal machines, refer to figure 1 and the link below for more detailed information about using the VDI and using the client.

<https://www.aalto.fi/en/services/vdiaaltofi-how-to-use-aalto-virtual-desktop-infrastructure>