



FONDAZIONE PRADA
OMA

PIHLA KANGAS
OLLI KESKINEN



Fondazione Prada is located in industrial space in a former gin distillery from 1910.

The complex consist of a large courtyard surrounded by new and old renovated buildings such as warehouses, laboratories and brewing silos.

*THE FONDAZIONE IS NOT A
PRESERVATION PROJECT AND
NOT A NEW ARCHITECTURE. TWO
CONDITIONS THAT ARE USUALLY
KEPT SEPARATE HERE CONFRONT
EACH OTHER IN A STATE OF
PERMANENT INTERACTION.*

-REM KOOLHAAS

PROGRAM

MUSEUM / GALLERY 11 800M²

SERVICES 7 100M²

PUBLIC SPACE 5 500M²

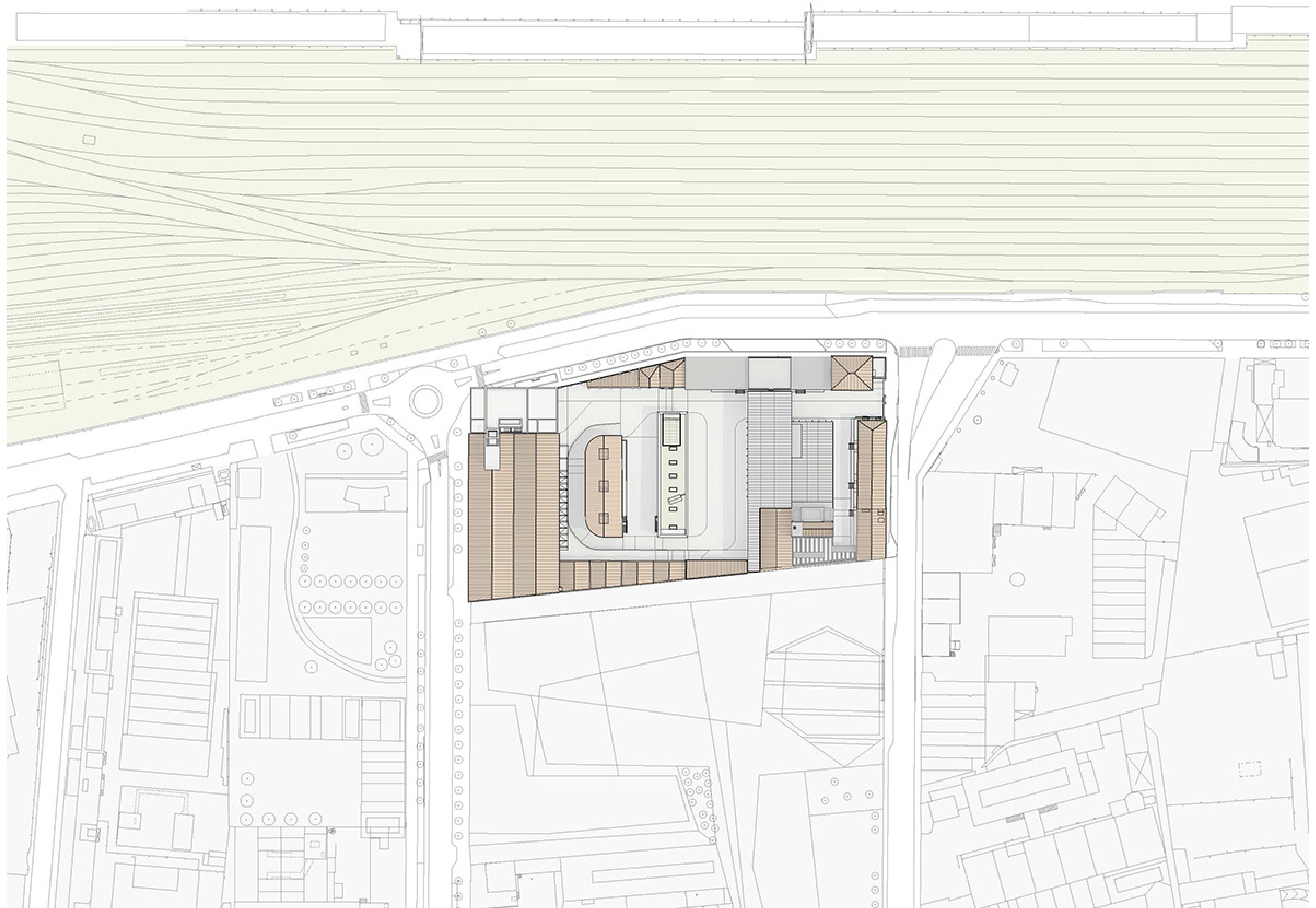
THEATRE 800M²

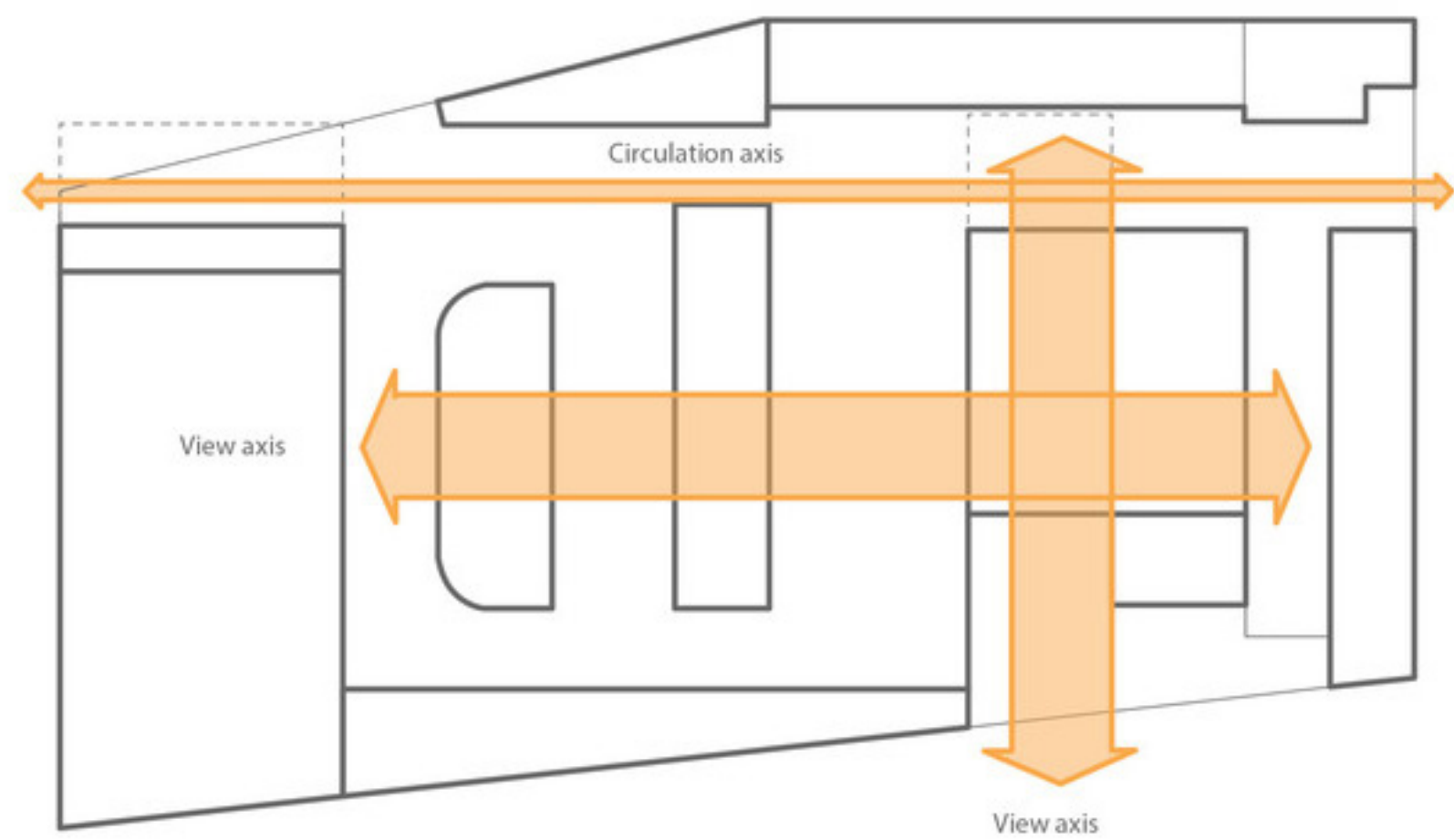
RESTAURANT / BAR 470M²

OFFICE 450M²

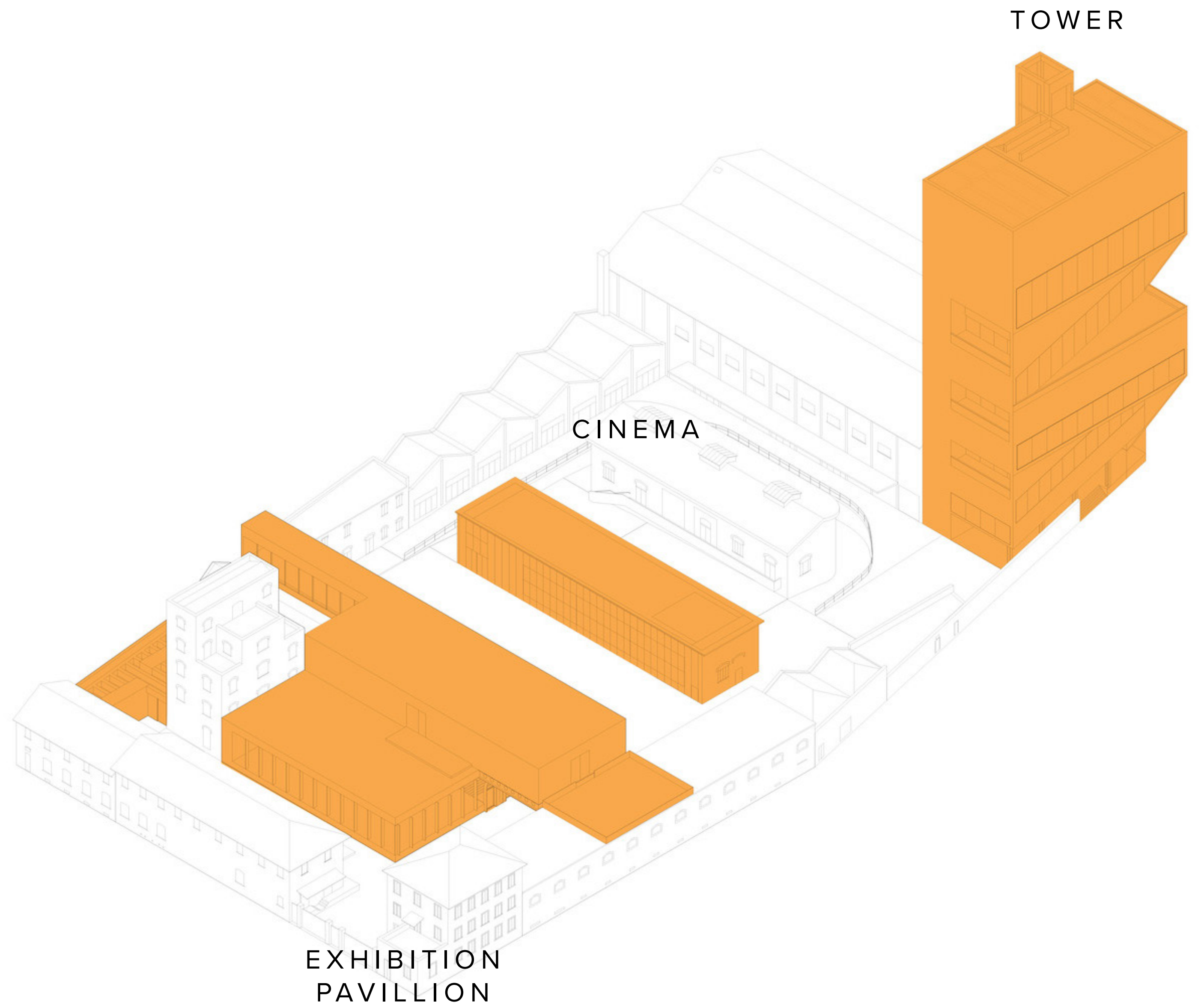
LIBRARY 420M²

28 340M²





CIRCULATION

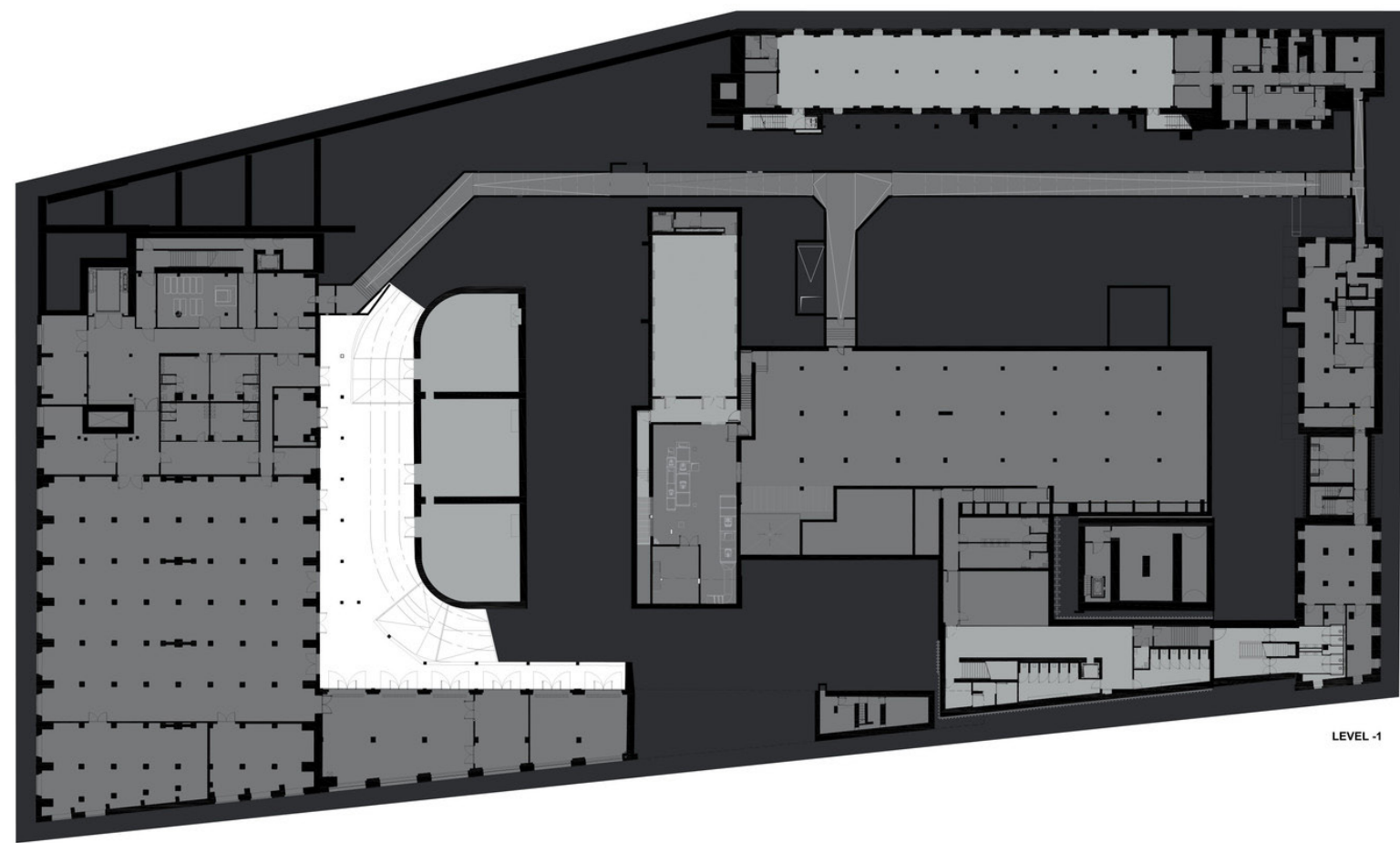


WHITE CONCRETE TOWER
WITH DIAGONAL ELEVATOR

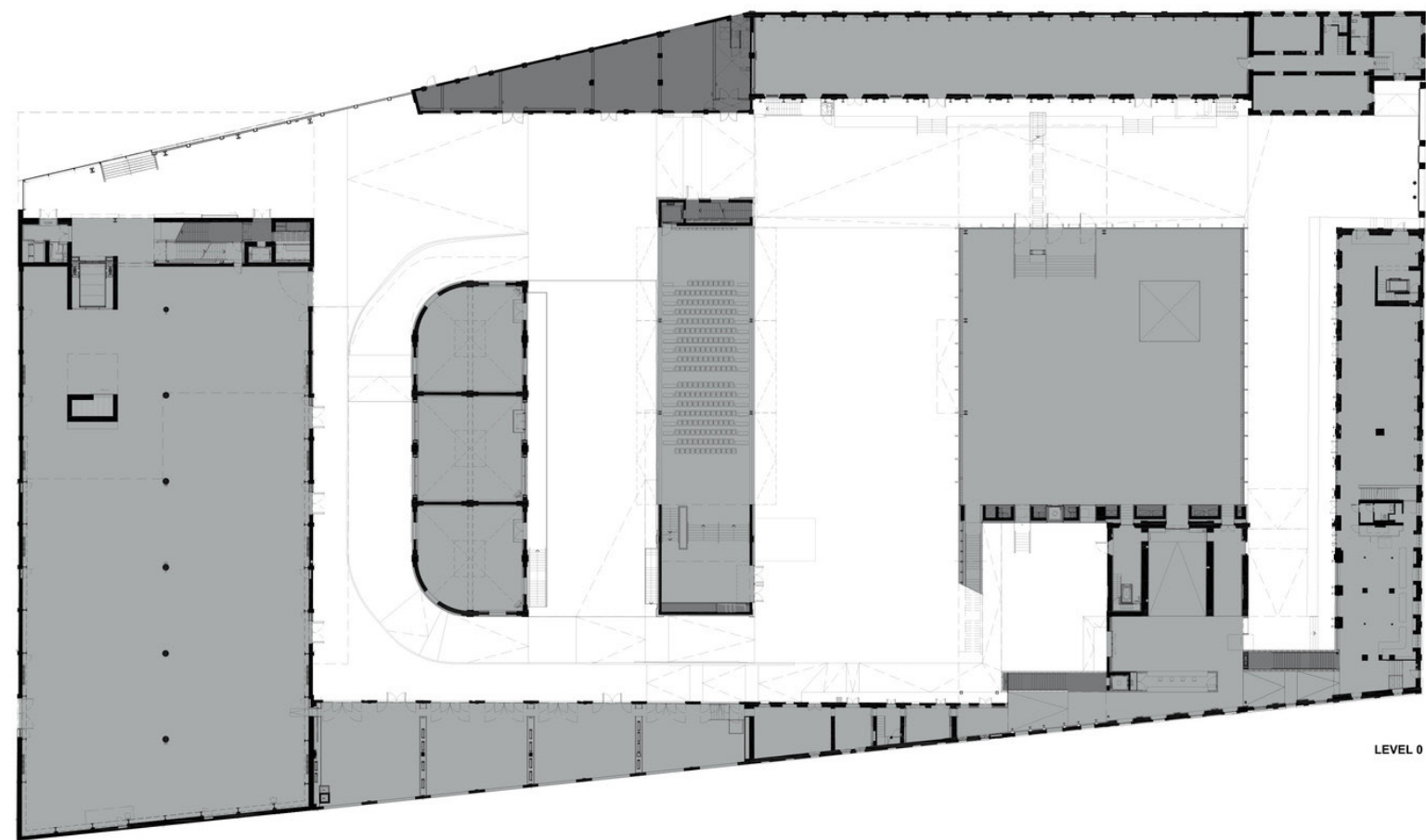


MODERNIST GALLERY
WITH OVER 1000 SQM OF
COLUMN-FREE SPACE

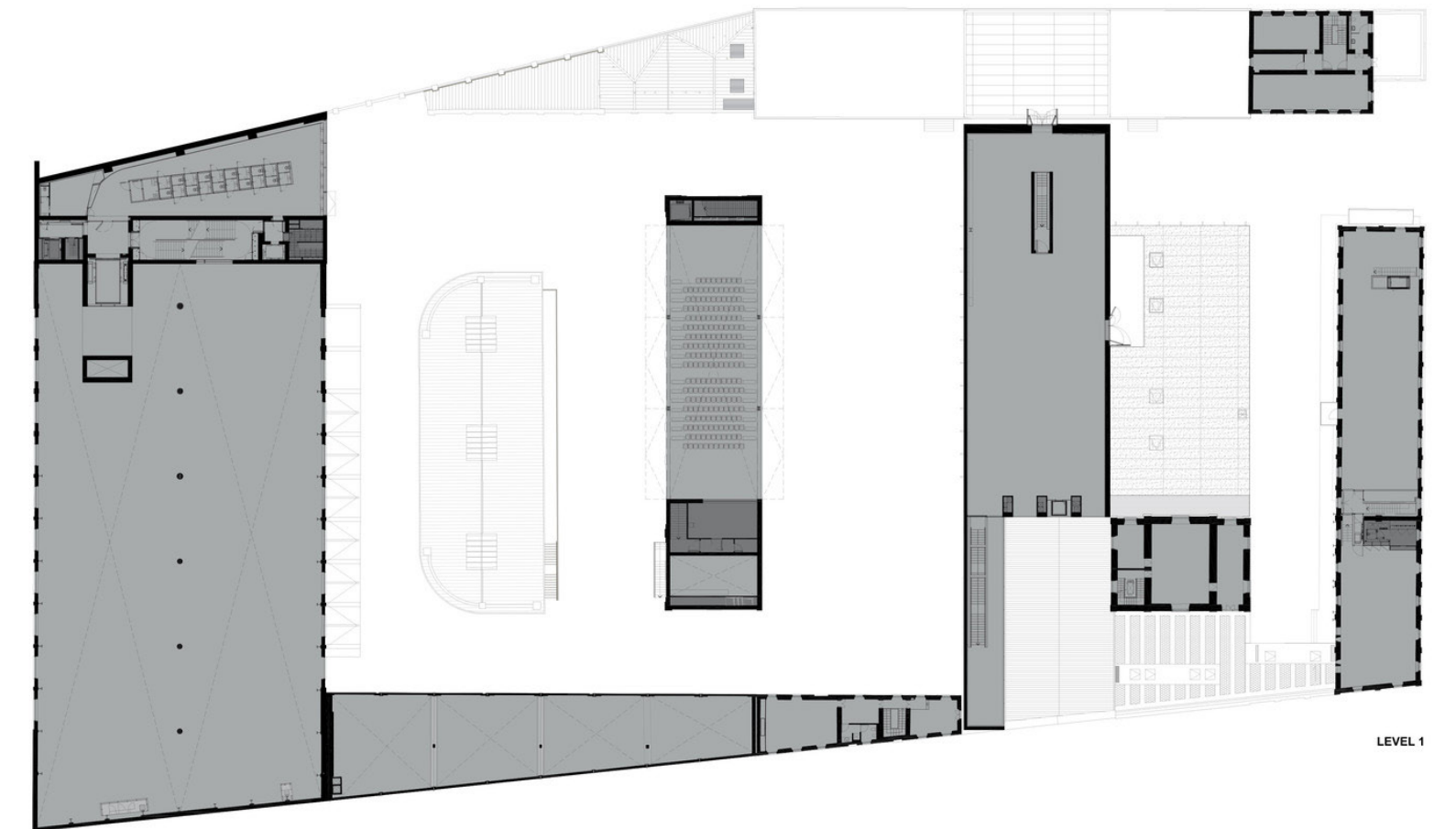
GOLDEN
OFFICE



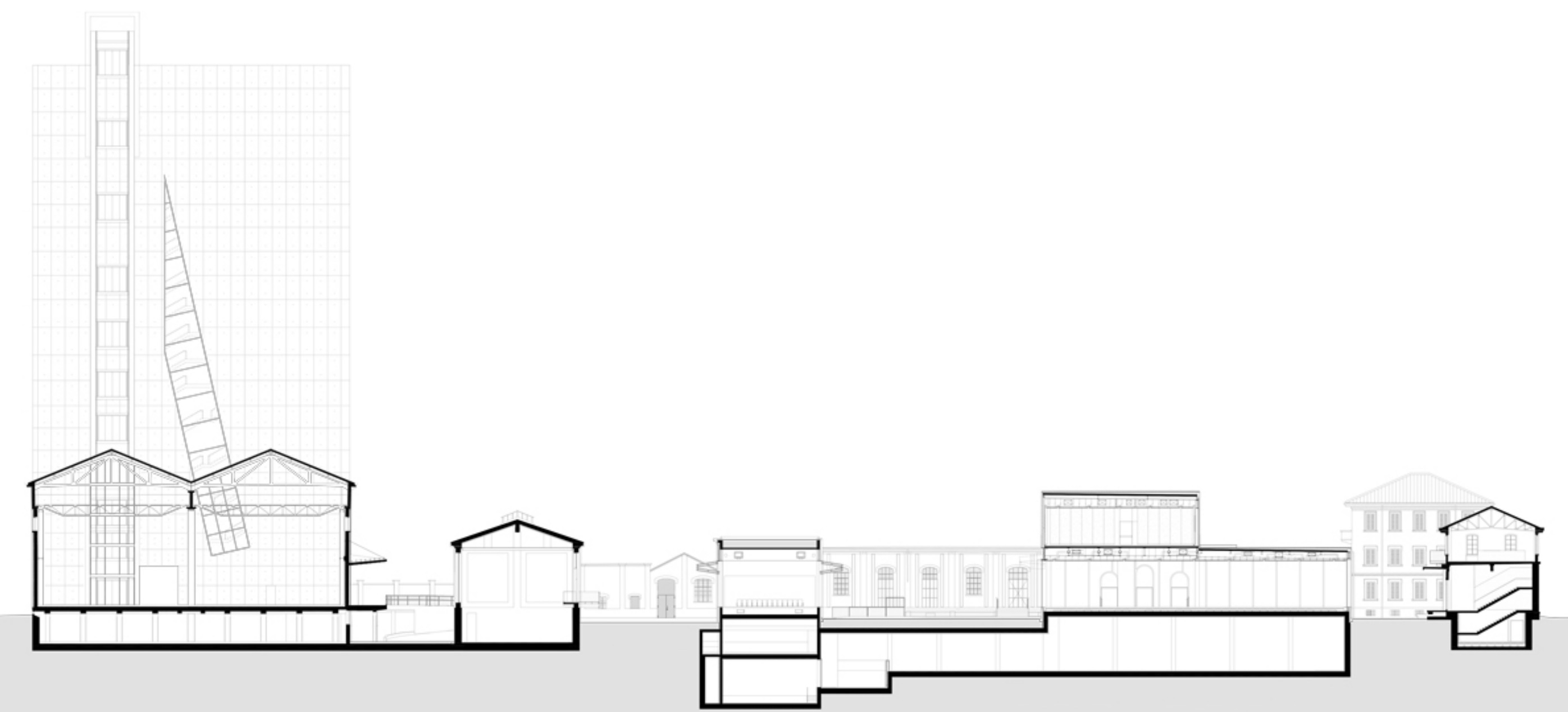
UNDERGROUND FLOOR



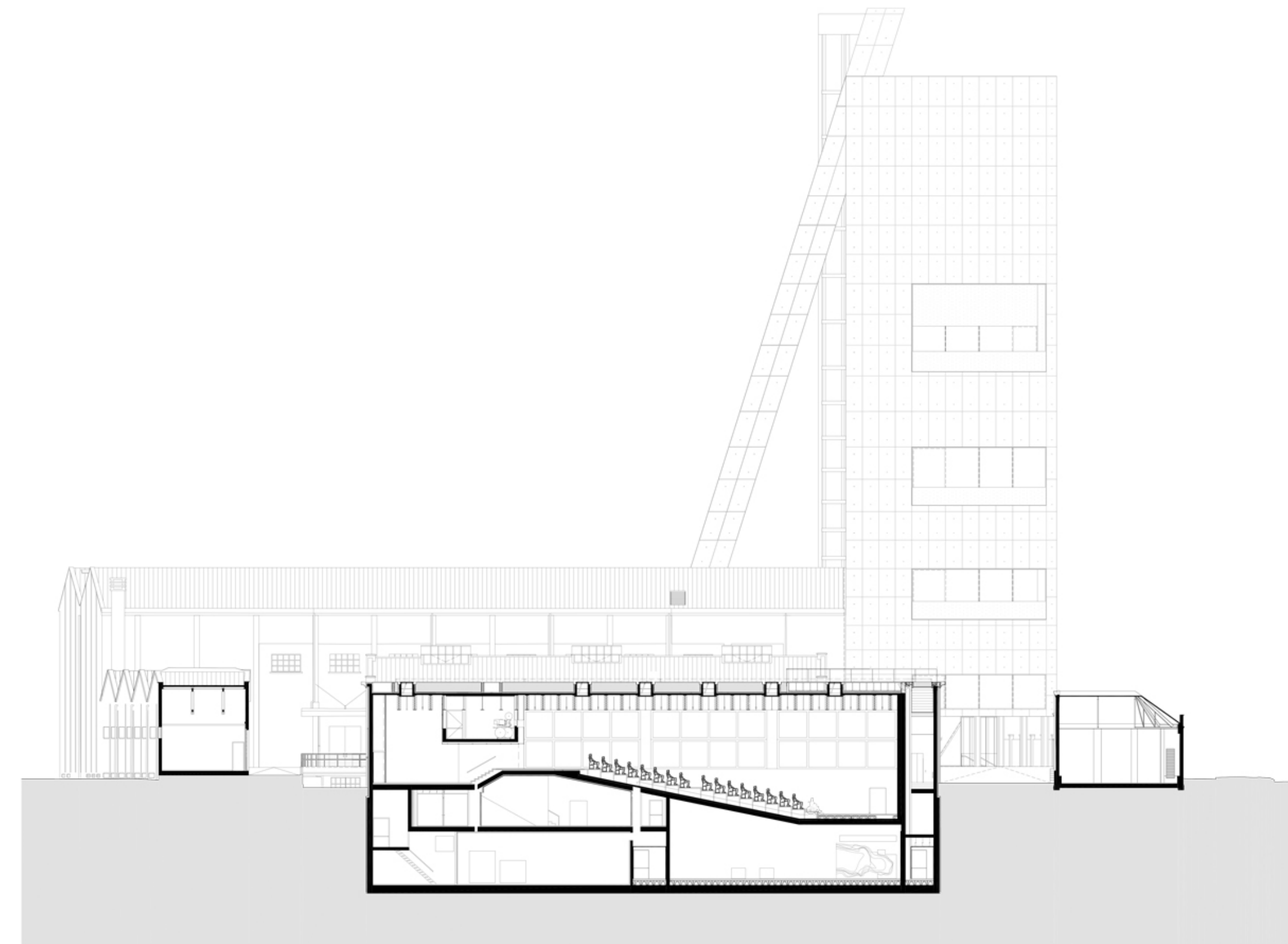
FIRST FLOOR



SECOND FLOOR



LONG SECTION



SHORT SECTION

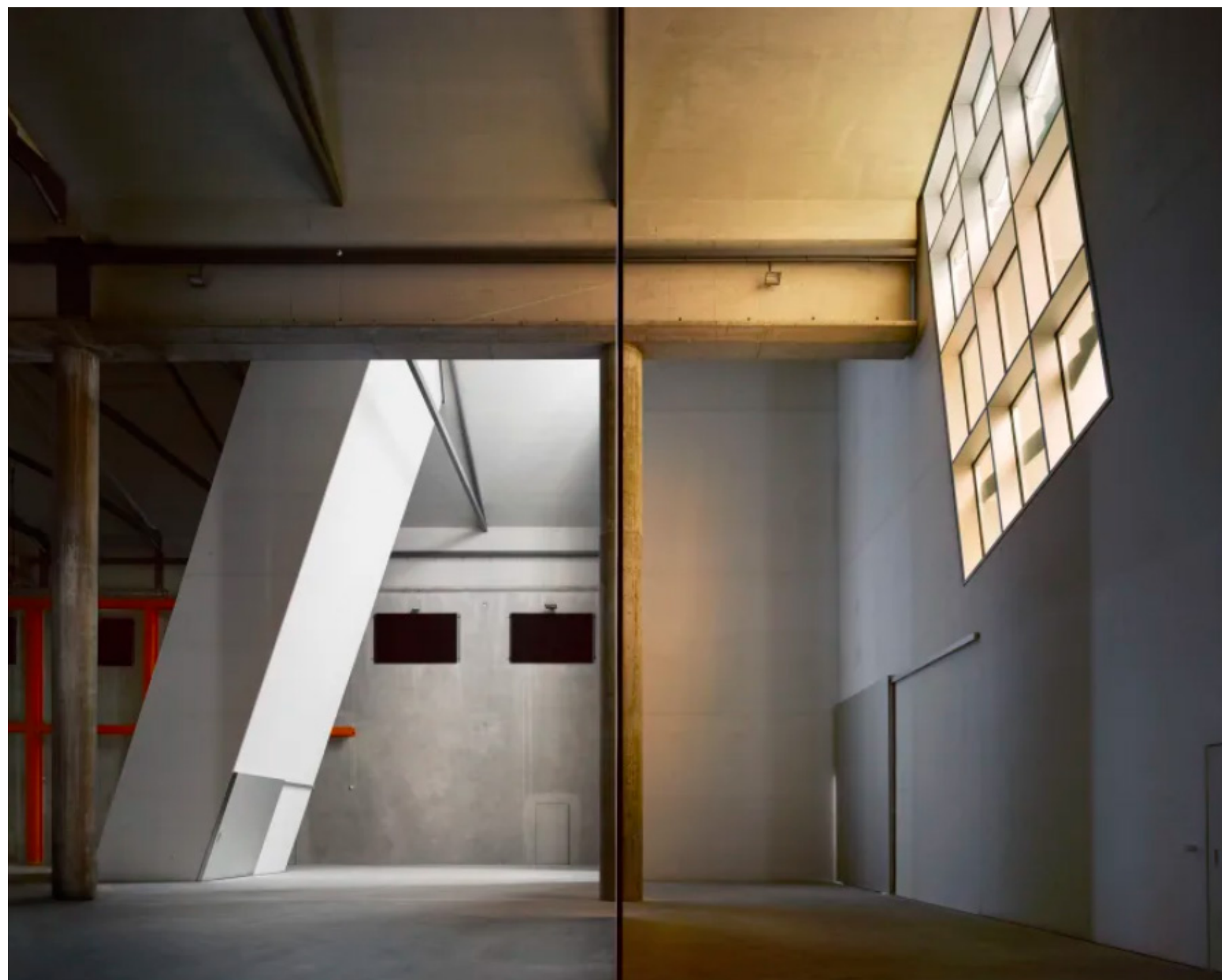
*NEW, OLD,
HORIZONTAL, VERTICAL,
WIDE, NARROW,
WHITE, BLACK,
OPEN, ENCLOSED*

*—
ALL THESE CONTRASTS
ESTABLISH THE RANGE
OF OPPOSITIONS
THAT DEFINE THE NEW
FONDAZIONE.*



The aim is to create a new kind of spatial typologies in which art can be exhibited.





THANK YOU

REFERENCES:

<https://www.oma.com/projects/fondazione-prada>

<https://www.yatzer.com/fondazione-prada-milan/slideshow/3>

[https://www.archdaily.com/628472/fondazione-prada-oma/
554af404e58ece423b000130-fondazione-prada-oma-elevation-c-oma?next_project=no](https://www.archdaily.com/628472/fondazione-prada-oma/554af404e58ece423b000130-fondazione-prada-oma-elevation-c-oma?next_project=no)

<https://www.architectural-review.com/today/fondazione-prada-in-milan-by-oma>