



Case study

Ravensburg Museum

Lederer
Ragnarsdóttir Oei

Daiki Toyama
Mahsa Tajalli

Site plan

- Location

Burgstraße 9, 88212
Ravensburg, Germany

The Ravensburg Art Museum is
located in the old town of
Ravensburg.



Relation to the site:

- The new museum of art blends in well with the small-scale texture of the historic city center thanks to its roughly joined bricks, sheet copper, and wooden windows. However, the structure is a totally separated from the urban context due to the relatively high volume of the building and the remarkable curved lines used in the roof.

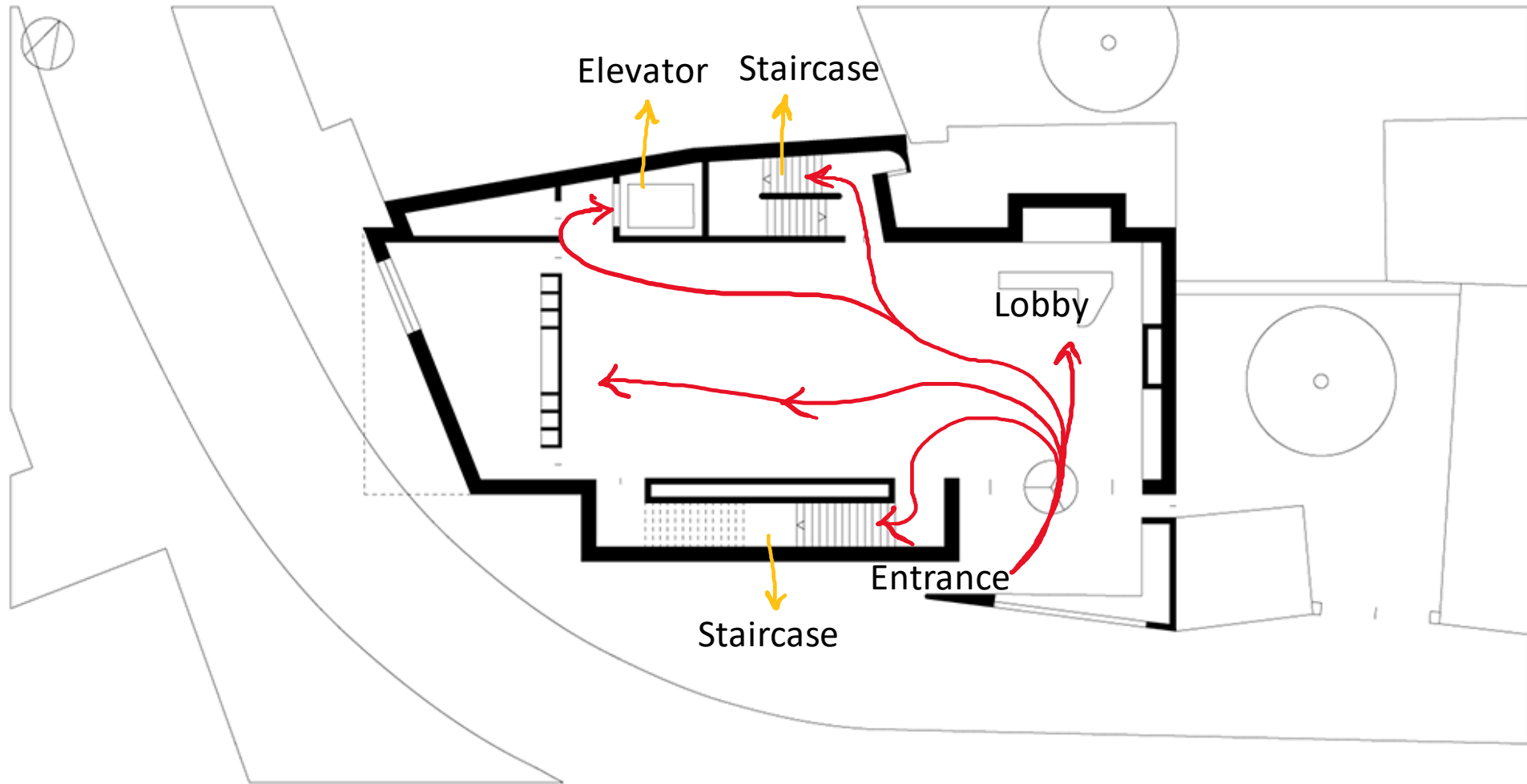


Function and Spaces:

- The museum has three stories and regardless of their dimension, each story has its own specific characteristics. The first floor was designed as an inward-looking "white cube," whilst the entrance story is a focal connection area with numerous large-scale windows. The curve of the roof is determined by a system of load-bearing bricks forming conical vaults in the roof story, which also maintains continuity between the building's interior and exterior.
- The museum displays temporary exhibitions as well as art collections from Ravensburg. The exhibition areas are the centerpiece of the building and have rectilinear forms built in their maximum possible sizes.



Circulation



Circulation

- Vertical circulation is happening by two stairs and a lift within the building.



Material

- Materials: Reinforced concrete, bricks, metal, gypsum plasterboard.
- One of the reasons to design the museum as a large enclosed brick building is to maximize the art protection.



Bricks

- The bricks were recovered from a demolished monastery near the Belgian border and through their reuse, point to the central role of sustainability in construction.



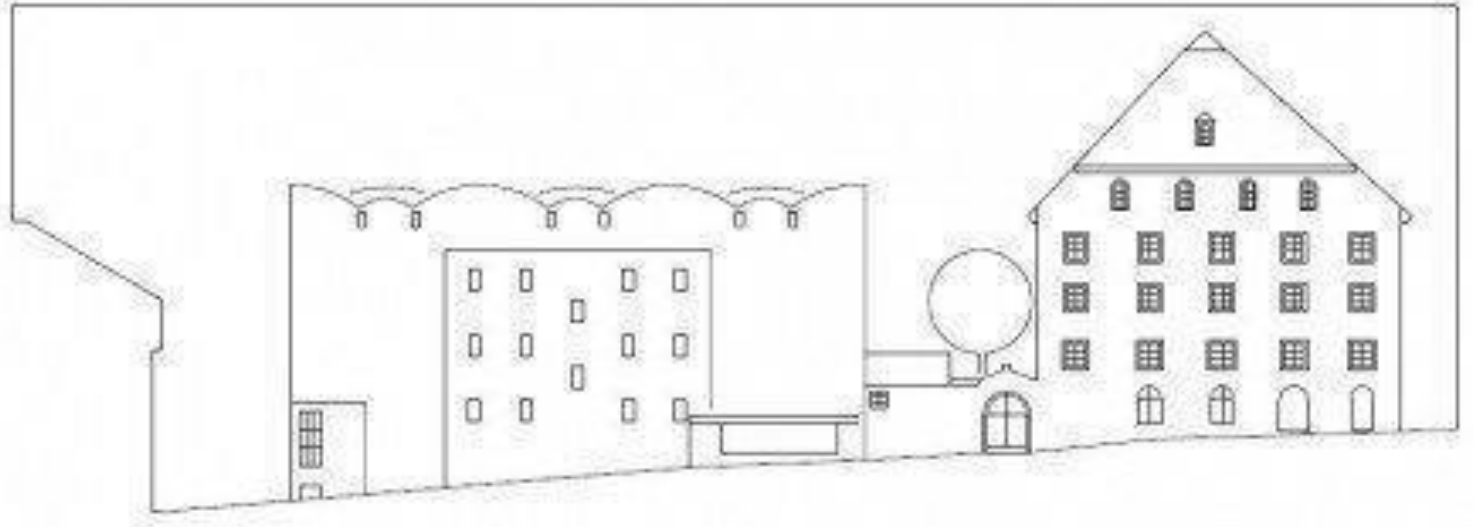
Passive museum

- This is the world's first built to passive house standards. It is supplied with air, heat and cooling only as needed and is designed to reduce its primary energy input to a bare minimum.

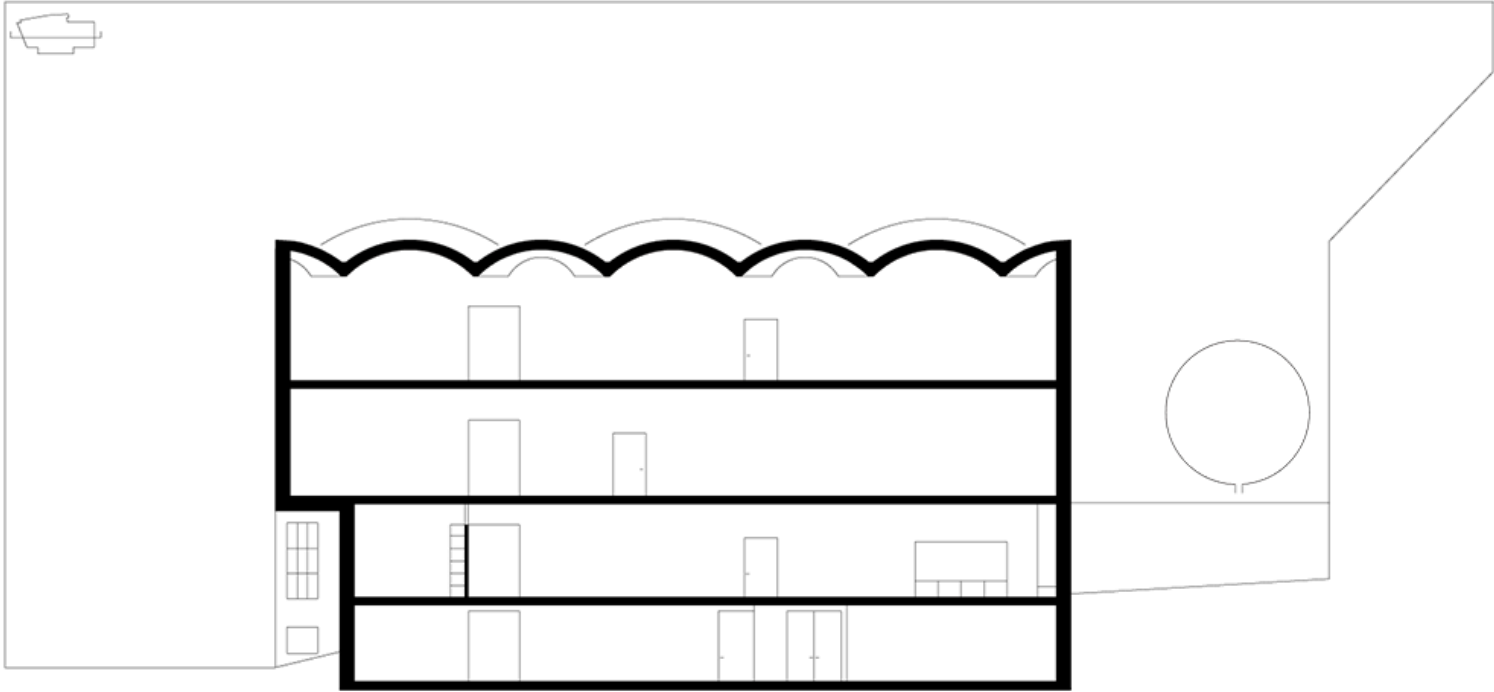


Elevation

the structure is a totally separated from the urban context due to the relatively high volume of the building and the remarkable curved lines used in the roof.



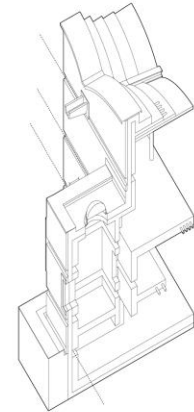
Section



Detail

- Research website

<https://mayasorabjee.com/Passive-Museum>



Reference

- Official website

<https://www.kunstmuseum-ravensburg.de/>

- Architect's website

<https://www.archlro.de/en/projects/kunstmuseum-ravensburg>

- Others

<https://www.architectmagazine.com/project-gallery/ravensburg-art-museum-6639>

<https://www.miesarch.com/work/583>

<https://inspiration.detail.de/museum-of-art-in-ravensburg-106734.html>

<https://www.erco.com/en/projects/culture/ravensburg-art-museum-5848/>

<https://mayasorabjee.com/Passive-Museum>