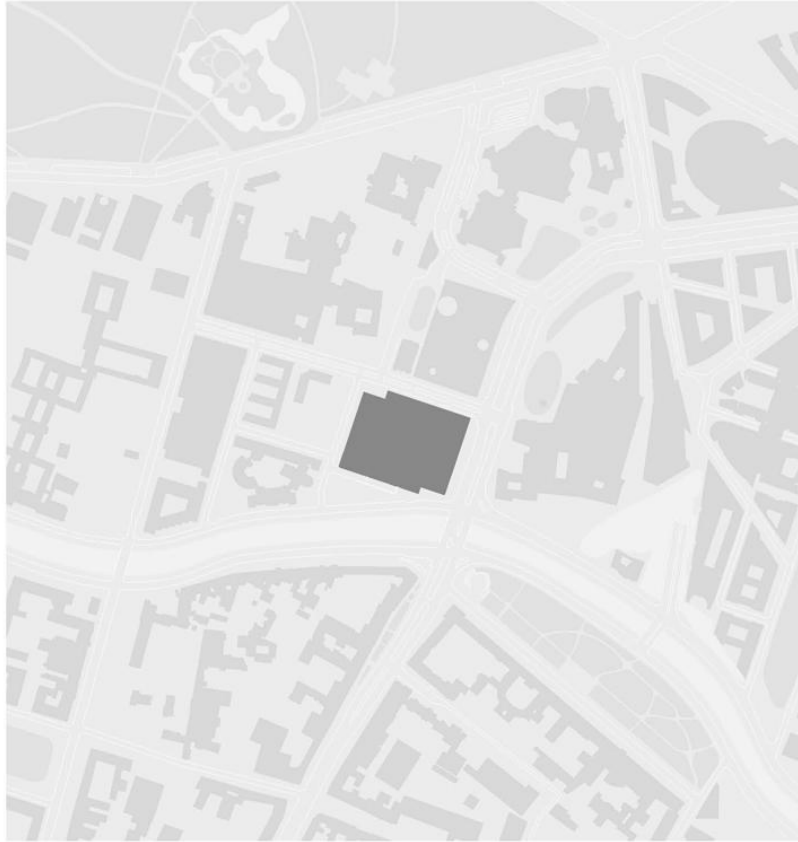


# Neue Nationalgalerie





## Neue Nationalgalerie (eng. New National Gallery)

Architect	Ludwig Mies van der Rohe (refurbishment by David Chipperfield Architects)
Location	Berlin (Kulturforum), Germany
Construction	1965–1968 (refurbishment 2012–2021)
Use	Museum for modern art. The museum's collection features a number of unique highlights of modern 20th century art.
Area	13 900 m <sup>2</sup>



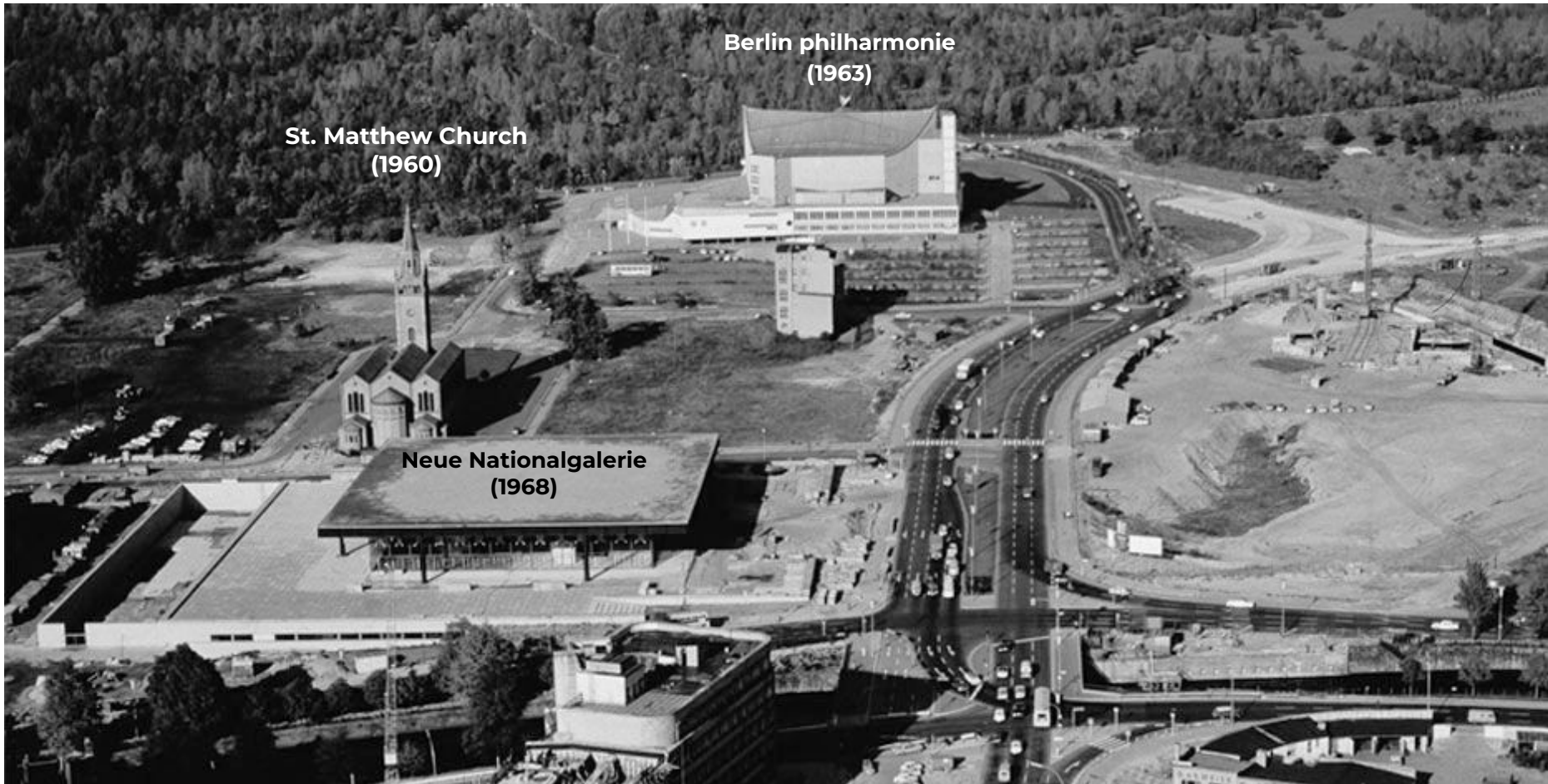
## Background

- Political situation affected the location and design of Neue Nationalgalerie
- The site was previously a residential area but parts of it were torn down
- In the 50s making of a new cultural center started. Kulturforum was to become a modernist answer to Museum Island. Neue Nationalgalerie was designed as its centerpiece.
- Neue Nationalgalerie can be seen as the sole built form of three separate commissions:
  - Bacardi Building
  - Museum for Georg Schaefer's nineteenth-century art collection
  - Neue Nationalgalerie

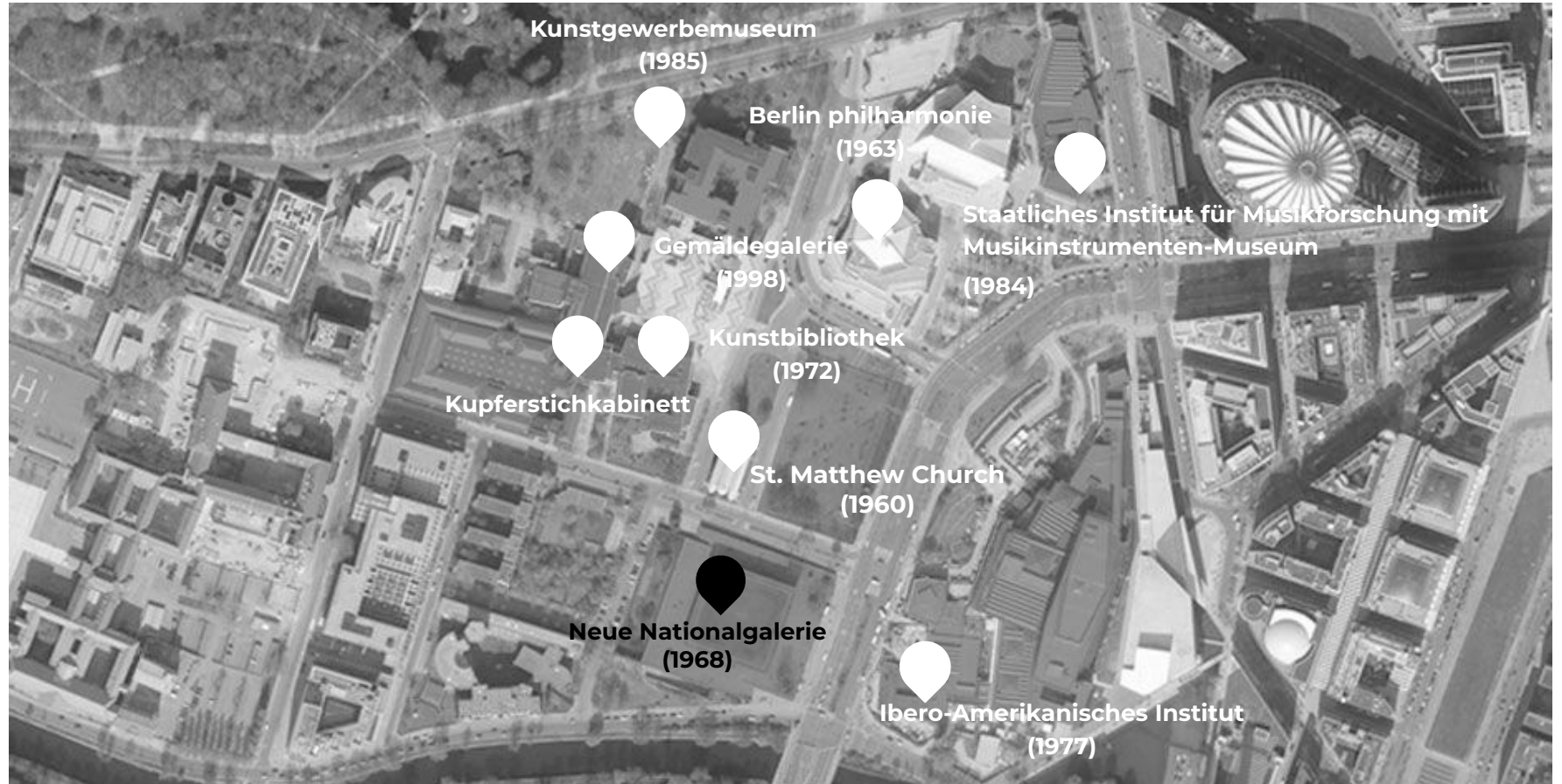
**St. Matthew Church  
(1960)**

**Berlin philharmonie  
(1963)**

**Neue Nationalgalerie  
(1968)**







**Kunstgewerbemuseum  
(1985)**

**Berlin philharmonie  
(1963)**

**Staatliches Institut für Musikforschung mit  
Musikinstrumenten-Museum  
(1984)**

**Gemäldegalerie  
(1998)**

**Kunstabibliothek  
(1972)**

**Kupferstichkabinett**

**St. Matthew Church  
(1960)**

**Neue Nationalgalerie  
(1968)**

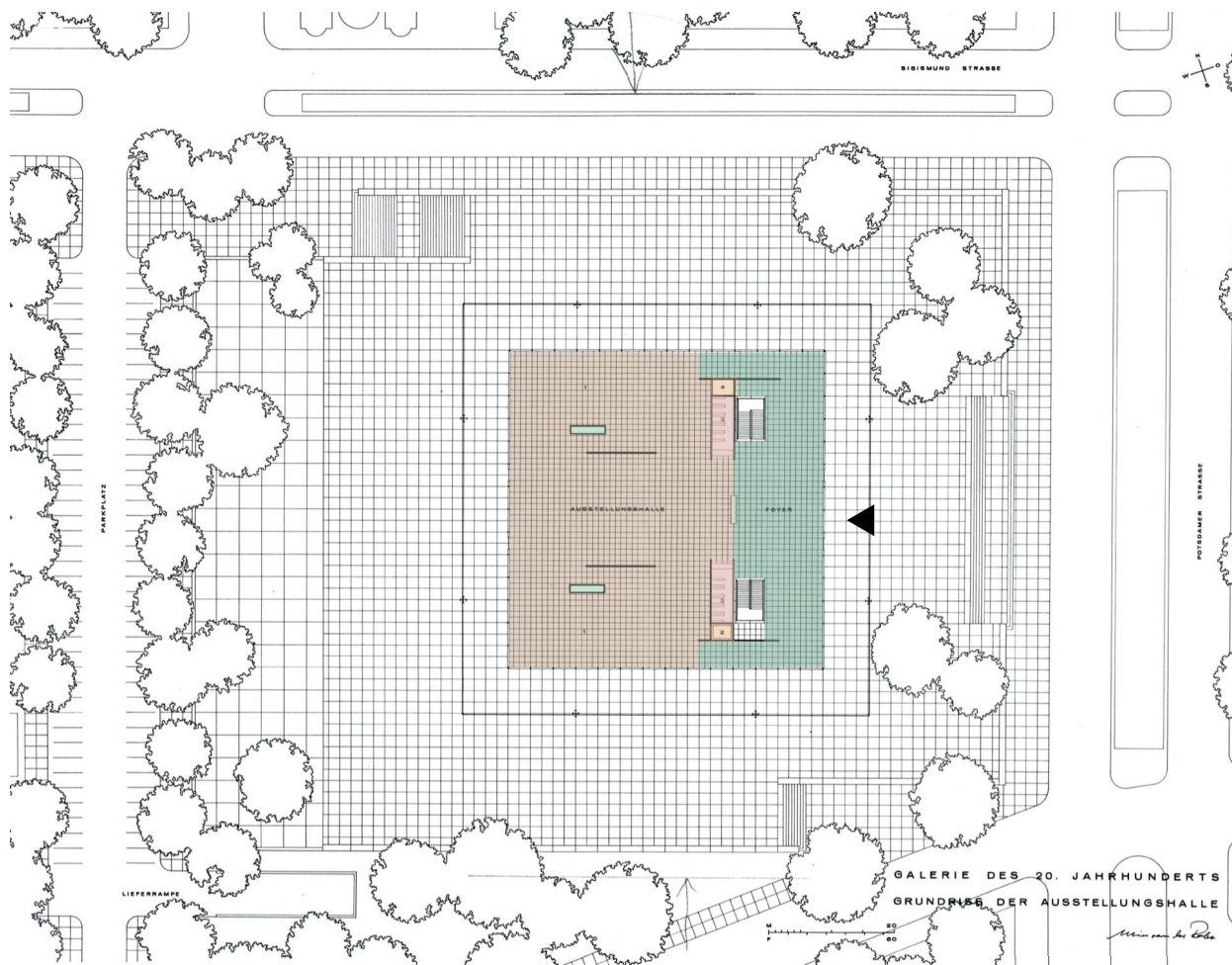
**Ibero-Amerikanisches Institut  
(1977)**



- Last major construction by Mies van der Rohe
- Mies' long-term interest in open spaces and indoor to outdoor connection can be seen in the pavilion-like, airy Museum building with a lot of glass surfaces
- The building stands on a podium like a Greek temple
- The buildings most distinctive feature is its main exhibition hall and the giant floating 1,8 m thick 65 m square steel roof plate that is resting on eight steel pillars.
- Pillars are placed on the sides, allowing the corners to be free creating an impression of a levitating ceiling.
- The glass walls and open floor plan make indoor and outdoor spaces connect effortlessly.







An entrance hall as well as the primary exhibit gallery (2 683 m<sup>2</sup> in total)

The upper story is elevated from the street level

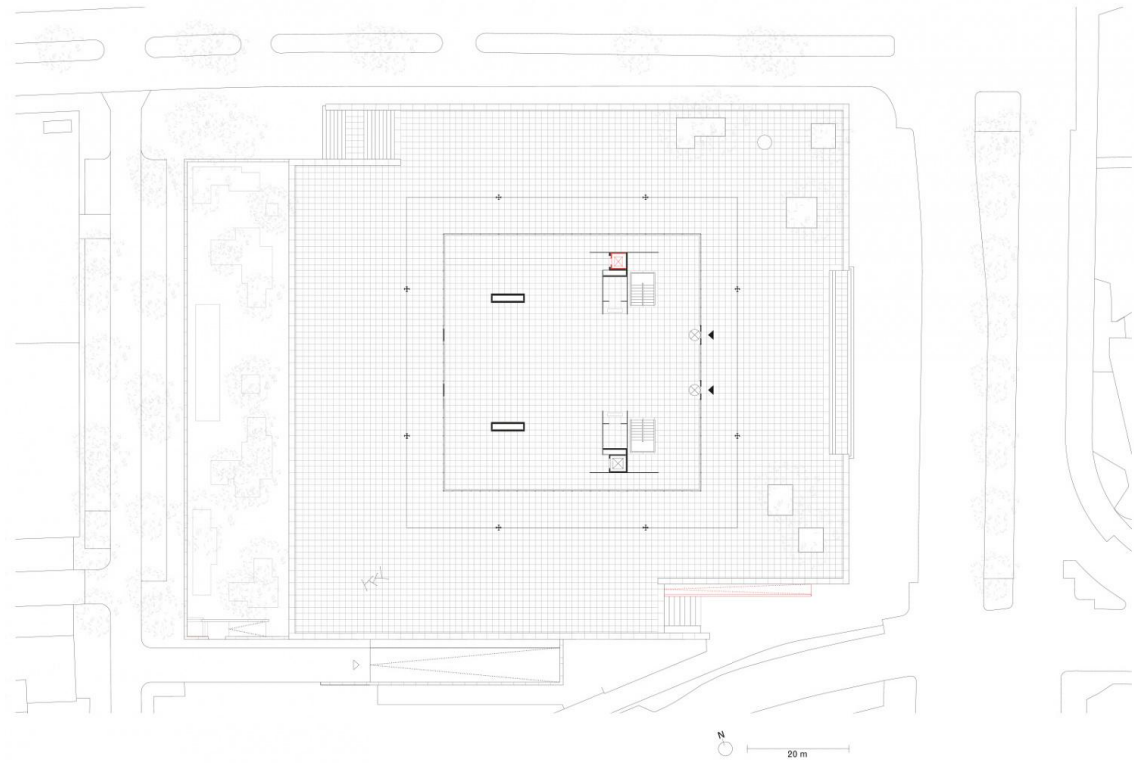
- foyer
- exhibition hall
- cloakroom
- elevators
- Installation structure





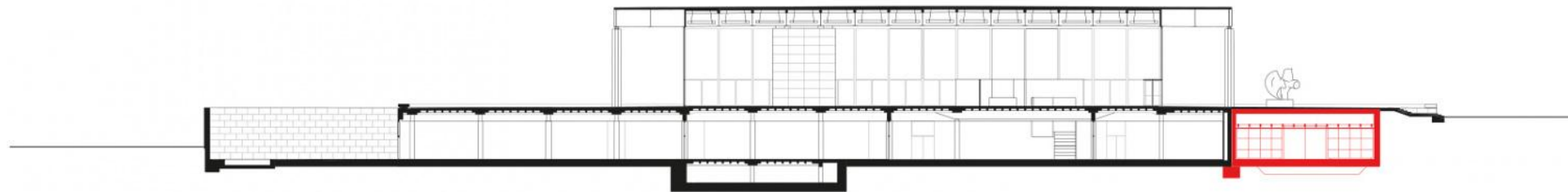
## Refurbishment 2012-2021











20 m





## References

<https://www.atlasofplaces.com/architecture/neue-nationalgalerie/>

<https://www.dezeen.com/2021/04/29/neue-nationalgalerie-overhaul-david-chipperfield-mies-van-der-rohe/>

<https://www.archdaily.com/960604/neue-nationalgalerie-david-chipperfield-architects>

<https://www.studioesinam.com/pages/neue-nationalgalerie>

<https://davidchipperfield.com/project/neue-nationalgalerie-refurbishment>