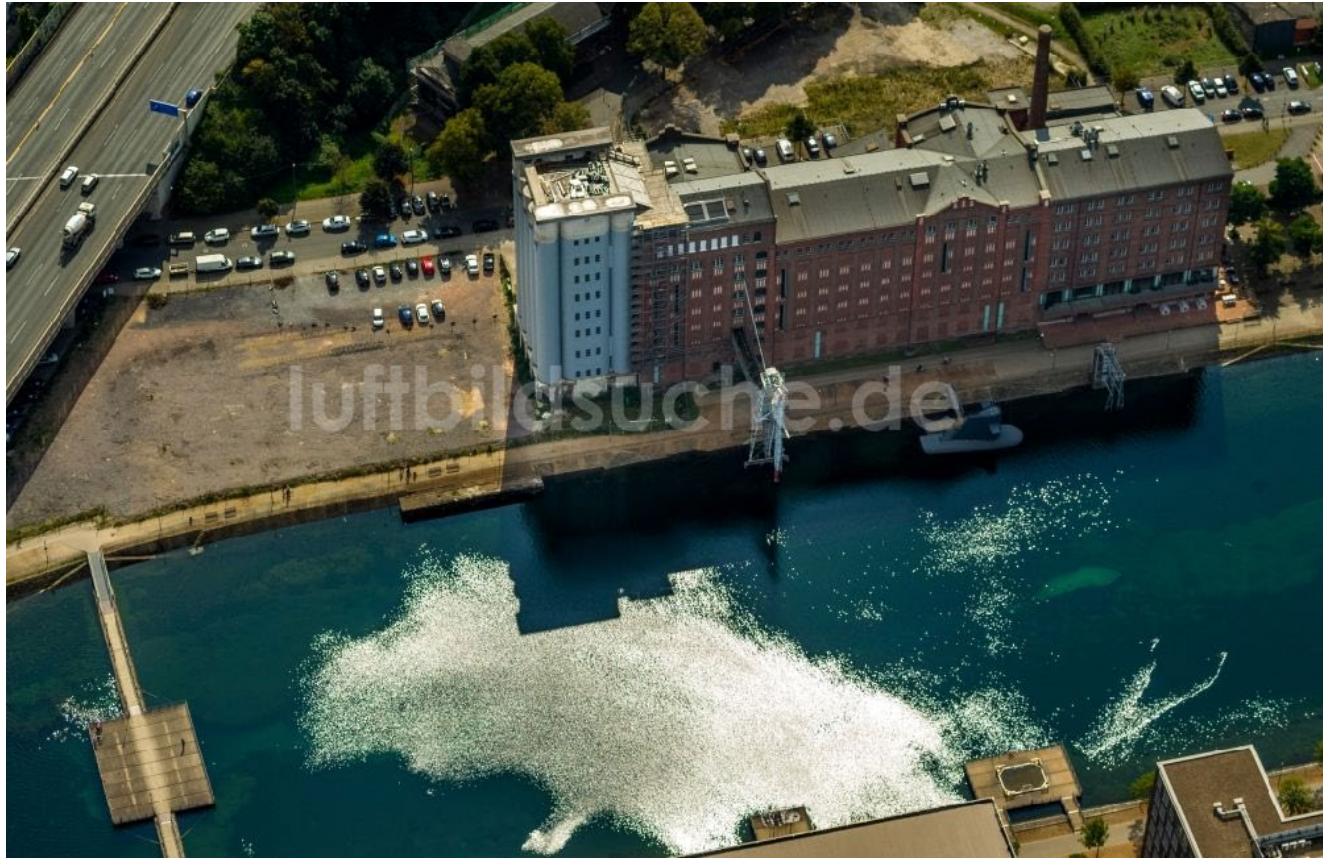




MKM Museum Küppersmühle Extension

Herzog & de Meuron



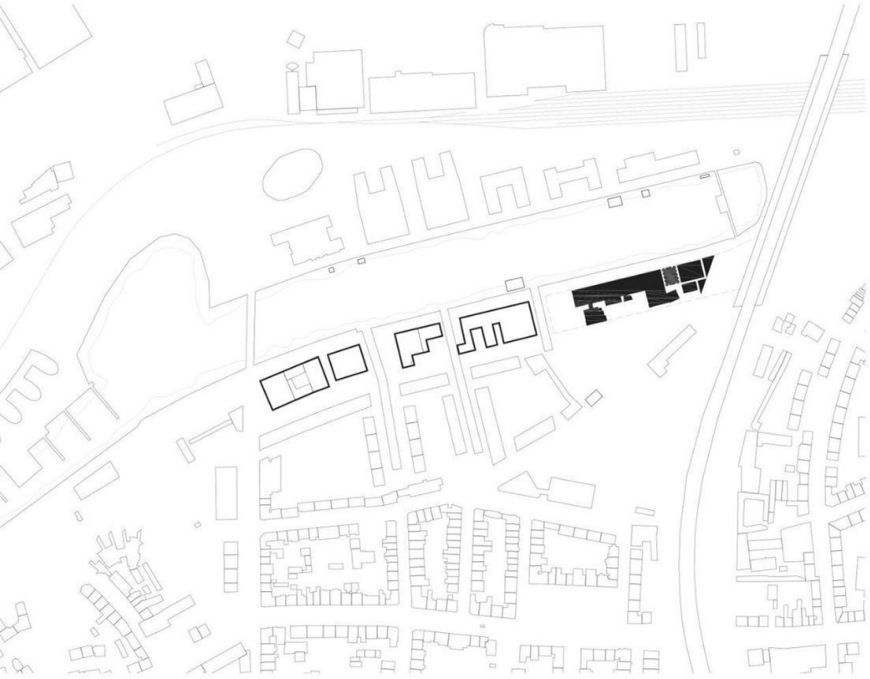
Context



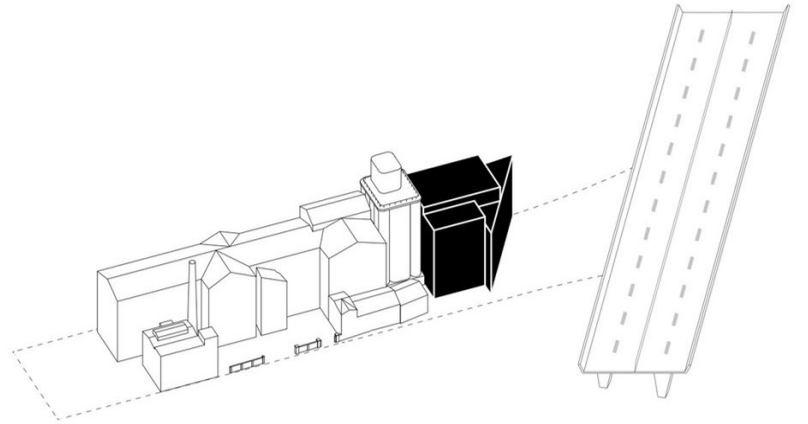
A striking industrial monument of the 19th century, MKM was built as a mill and operated that way for over 100 years (until it closed in 1972). Based on a master plan drawn up by British architect Sir Norman Foster, the former industrial wasteland of Duisburg's inner harbour was redesigned as part of the international architecture exhibition Emscher Park (1989-1999)



From 2013 to 2021, Herzog & de Meuron planned and executed an 2,500 m² (27,000 sq ft) extension. Divided into three parts, the new addition contains exhibition halls, as well as utilities and art-handling facilities across five floors.



Site Plan



Axonometric

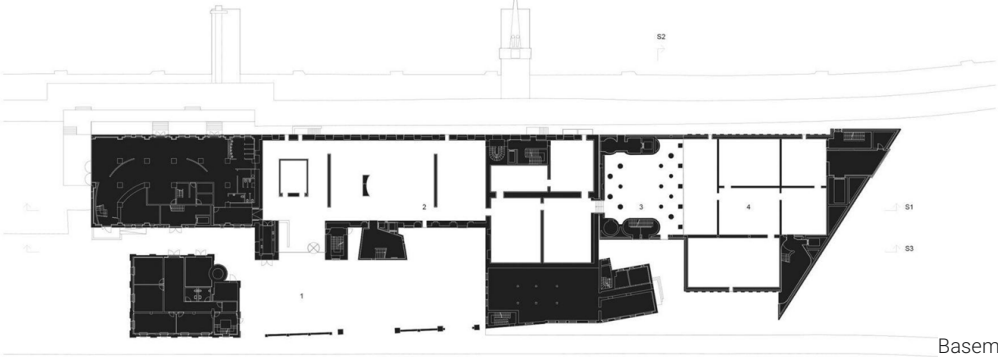




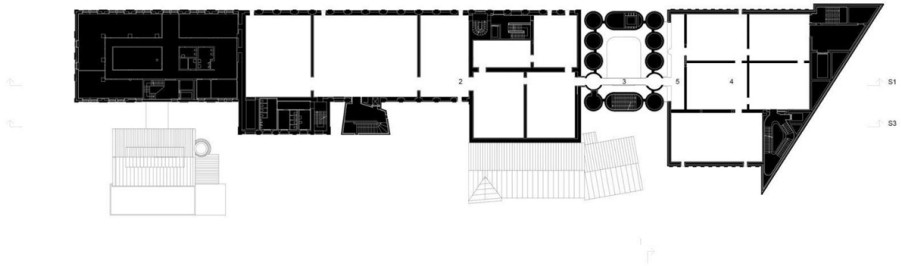
Function Partition



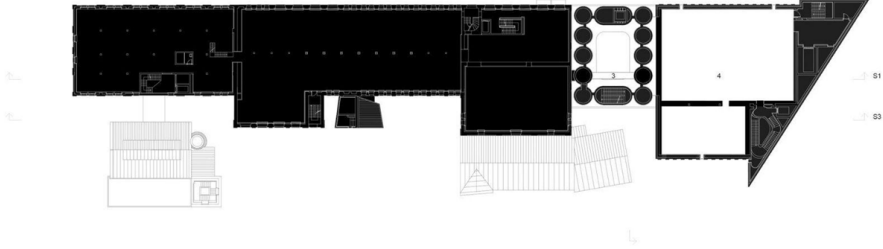
Plan



Basement Plan

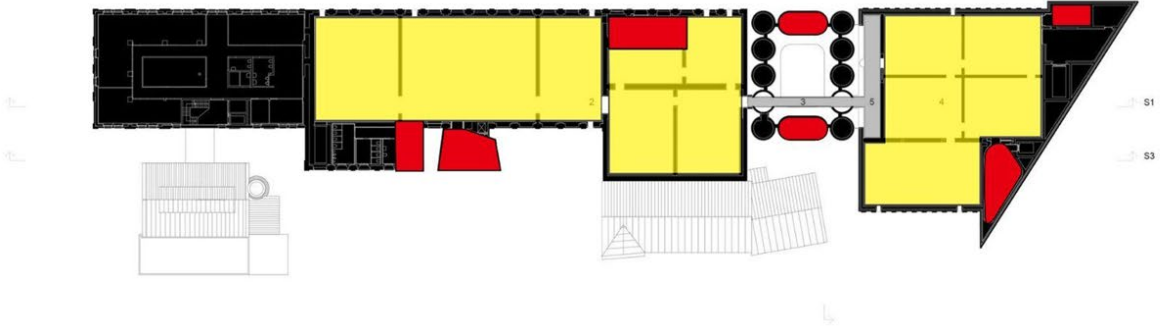
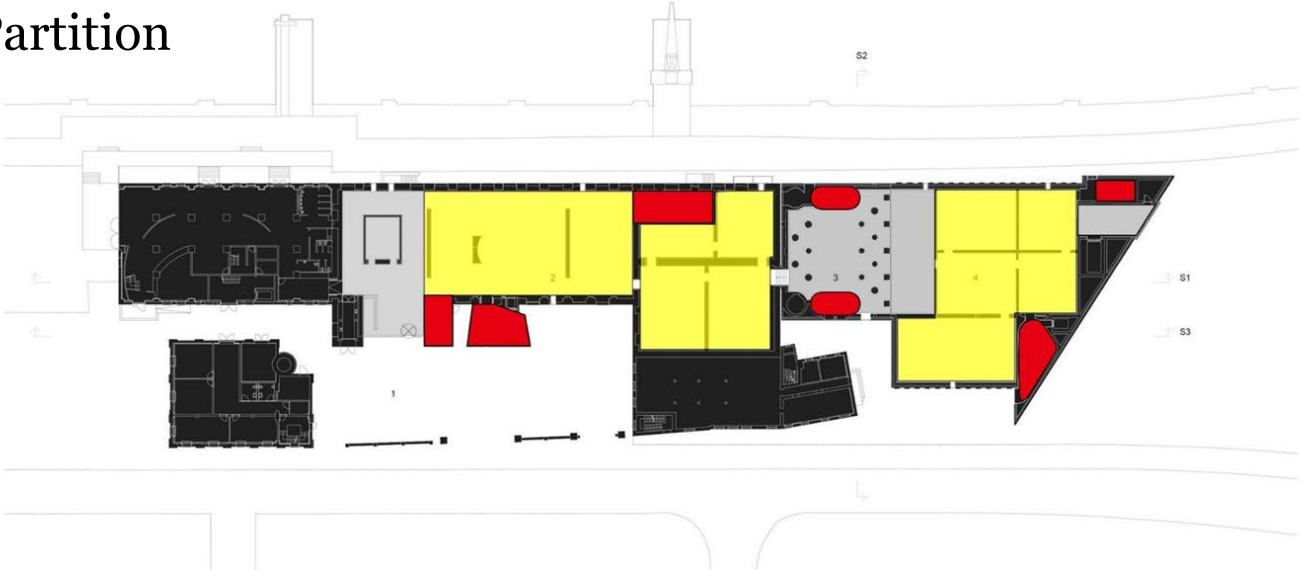


Second Floor Plan

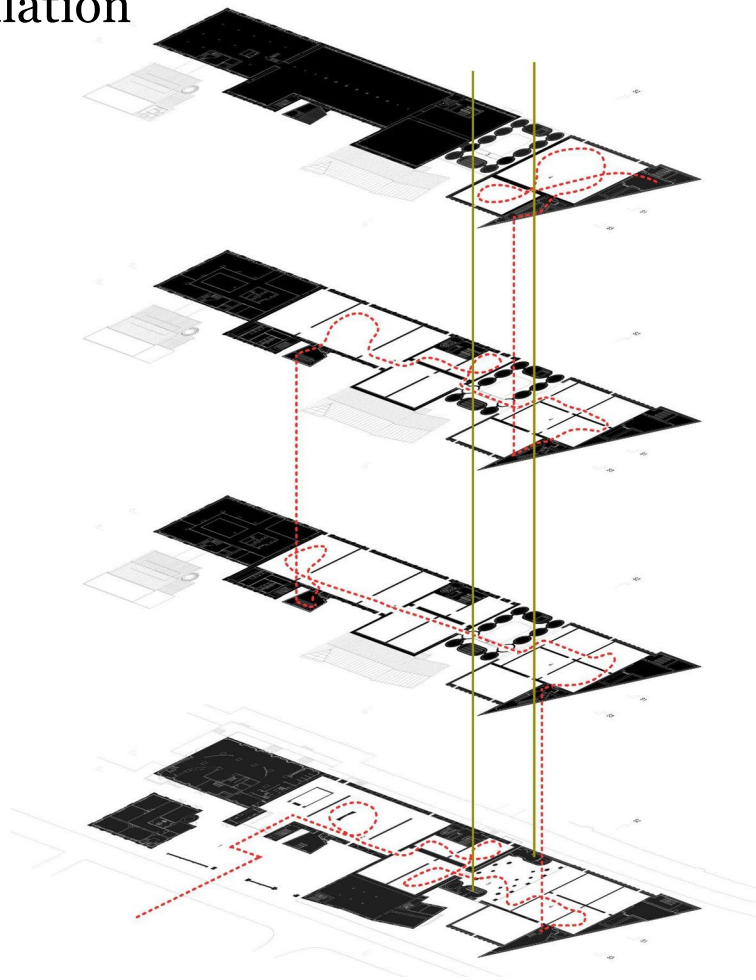


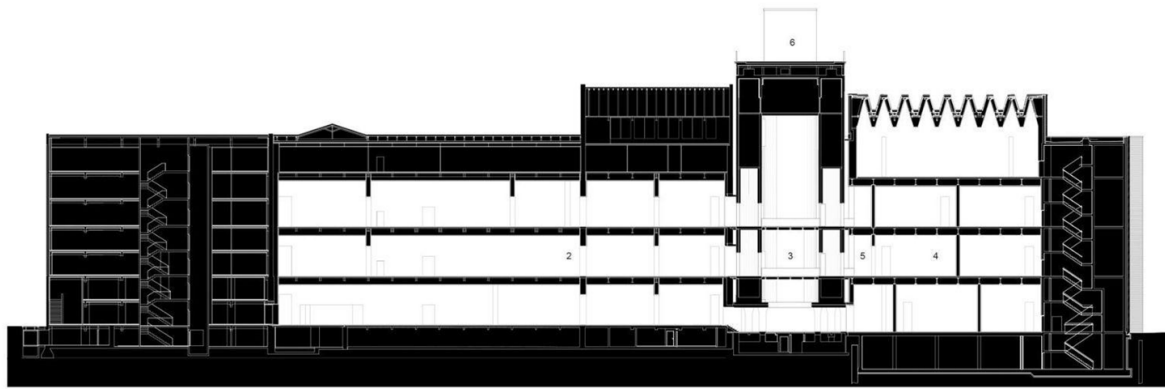
Third Floor Plan

Function Partition

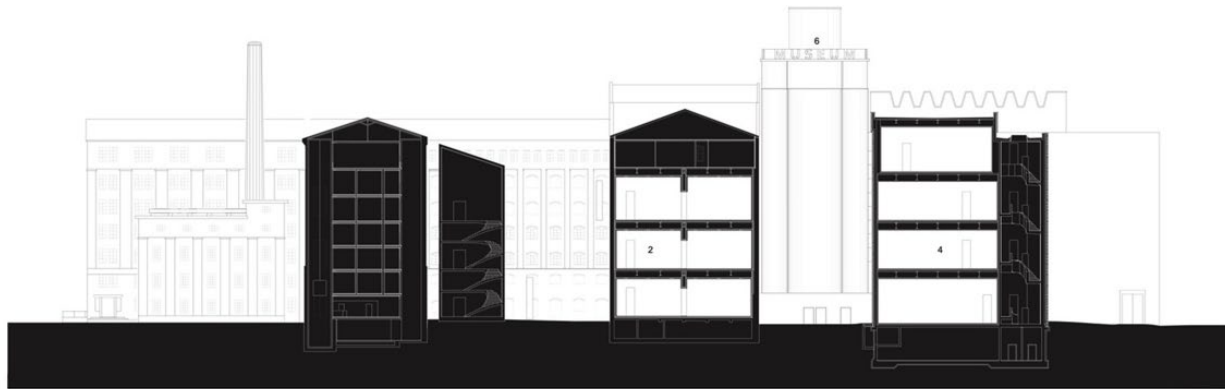


Circulation





Section 1



Section 3

