

V&A Museum

Kengo Kuma



Info

Museum - Dundee, United Kingdom

Architects: Kengo Kuma and Associates

Area: 8500 m²

Year: 2018

Photographs: Hufton+Crow

Manufacturers: HAVER & BOECKER, Sika, Techrete, Innovation Glass, Kilkenny Limestone, Shadbolt

Consultants: C-MIST, James F Stephen Architects

Optimised Environments (OPEN) Quantity Surveyor : CBA

Height: 17.75 m (3 storeys)

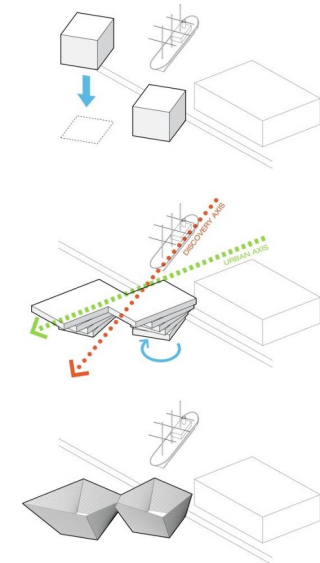
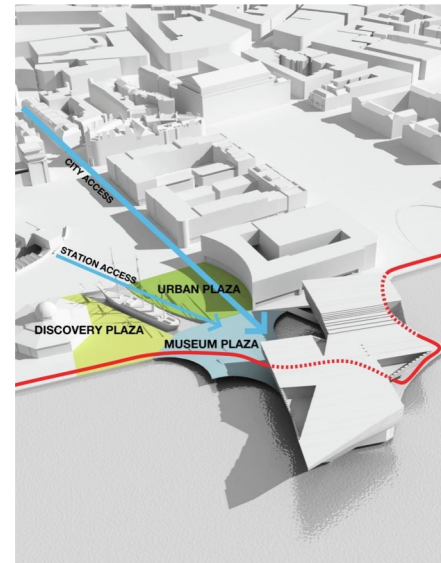
Occupancy: 860 visitors and 76 staff



Exterior and materiality - Concepts

The V&A at Dundee is designed to integrate within a new system of public spaces that will **connect the existing city center of Dundee** to the new cultural facility of the V&A.

“We were **intrigued by the beautiful cliffs of Orkney Island** in the north of Scotland and wanted to convey its natural randomness through the architecture, so we came up with the idea of stacking layers of long slabs of precast concrete with varying angles, to realize a façade with subtle nuances and dynamics.” - Kengo Kuma



Exterior space

- Open space for public
- City connection
- Border to harbour

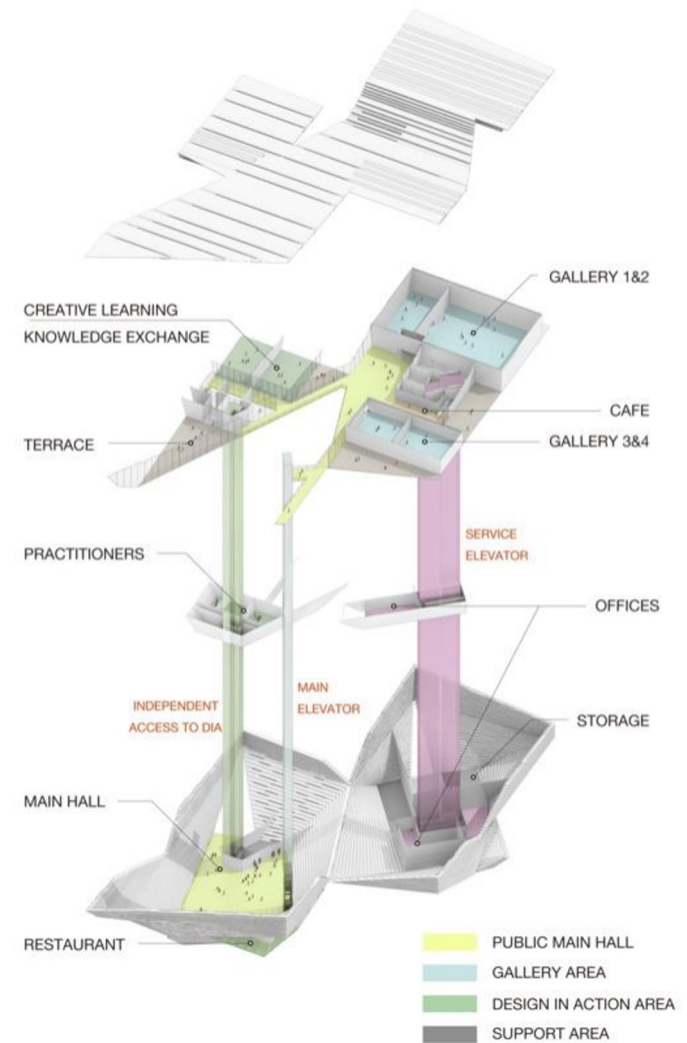
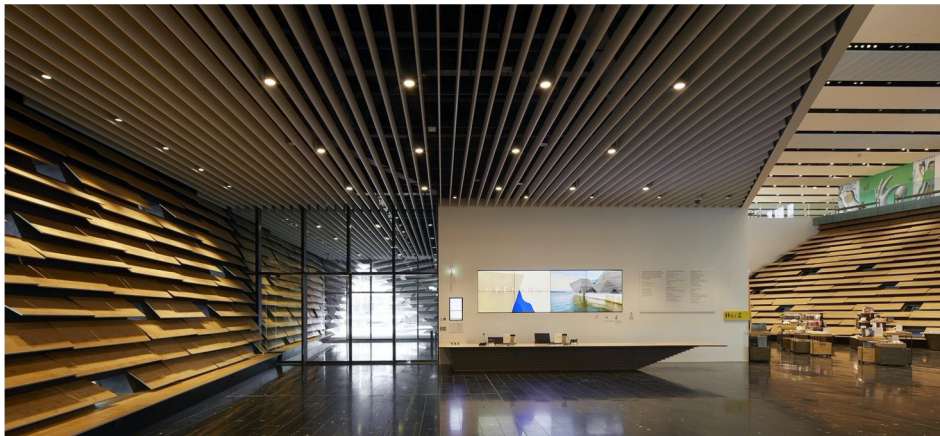


Construction

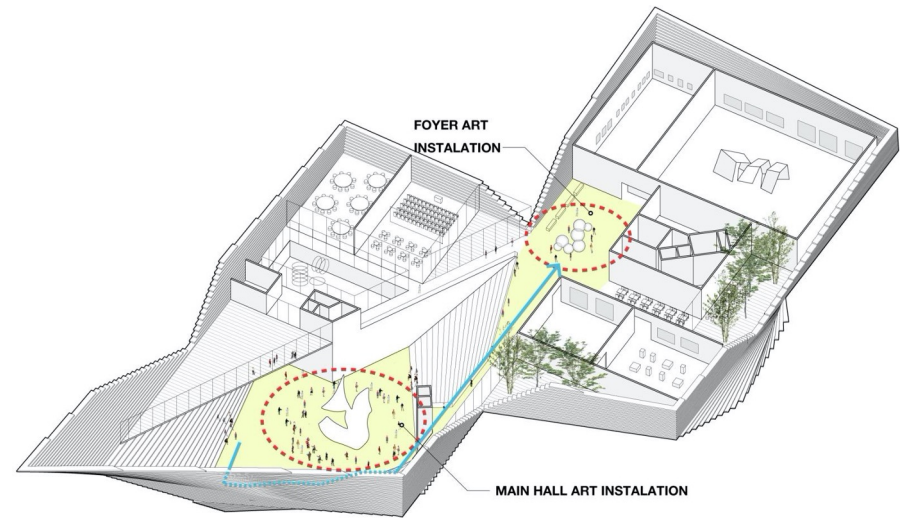


Concepts of floorplan and room

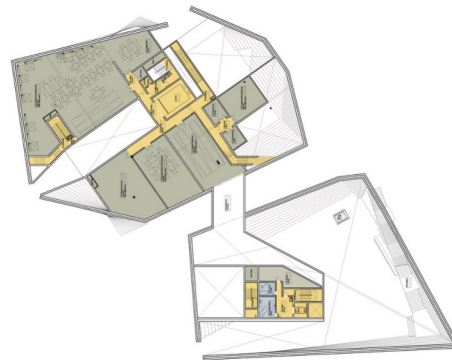
A large, **welcoming public hall will serve as a lively and flexible public square** that can accommodate a variety of uses, such as concerts, art workshops, installations, large-scale exhibitions and art pieces, and more. This public space will lead to Large exhibition galleries, a ‘Design In Action’ center, museum shop, cafe and restaurant.



The museum consists of **two large galleries**: one for touring V&A shows and temporary exhibitions and the other, 'the Scottish Design Galleries' for the permanent collection. **A café and shop** are housed in the **timber clad atrium** conceived as a '*living room for the city*'.



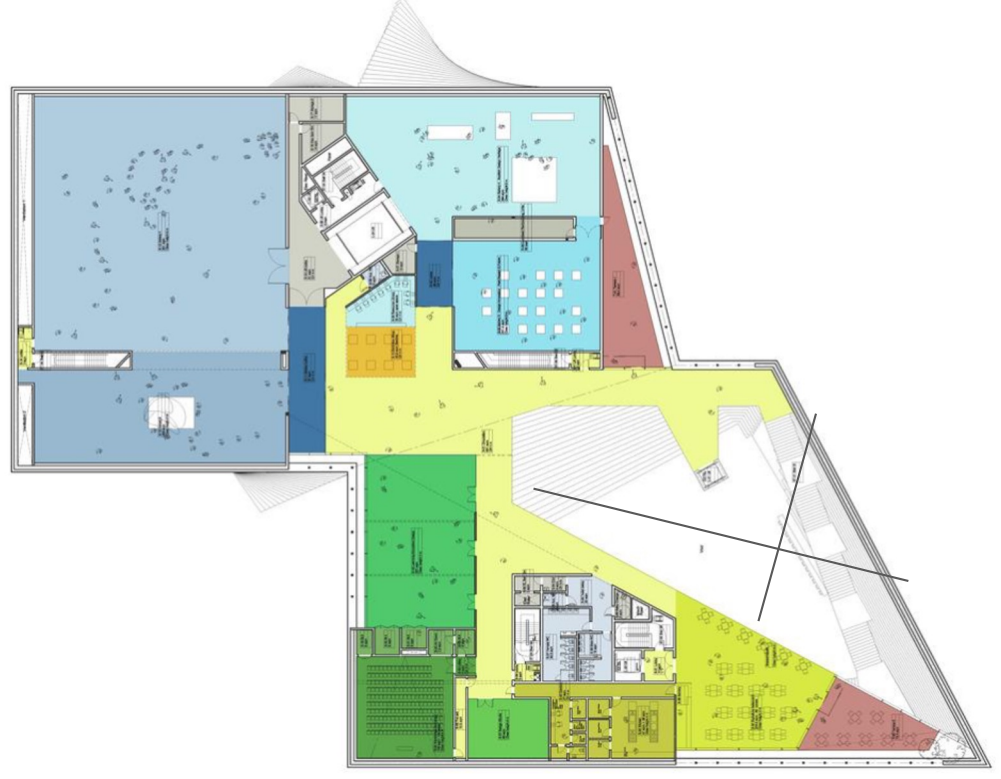
Ground floor - Main hall



First floor - Office, Practitioners



Second floor - Main Exhibition space



Interior - Foyer

The foyer was designed as a **large void** that is covered with locally available wood that has a soft texture with the intention that it be used as a “**Living Room**”

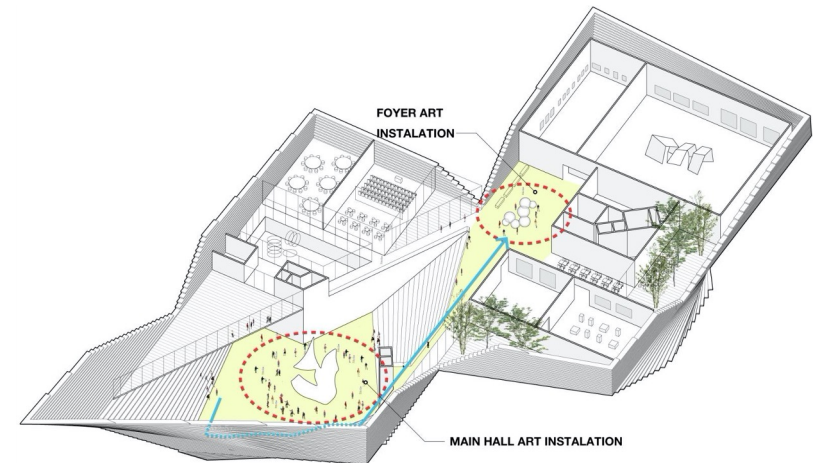
A large staircase along the public hall façade, entirely open toward the full height space, will **connect the public hall to the exhibition spaces** on the upper level of the building.



Exhibition Spaces

1,200 square meter gallery – the biggest exhibition space in Scotland – and the Scotland National Design center, that will host semi-permanent international and Scottish design collections.

The other space is for touring V&A shows and temporary exhibitions

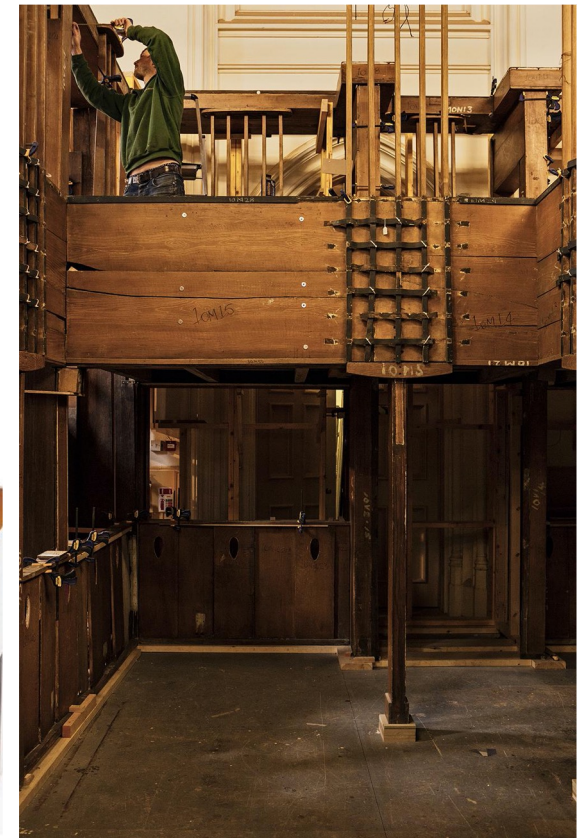


The Oak Room

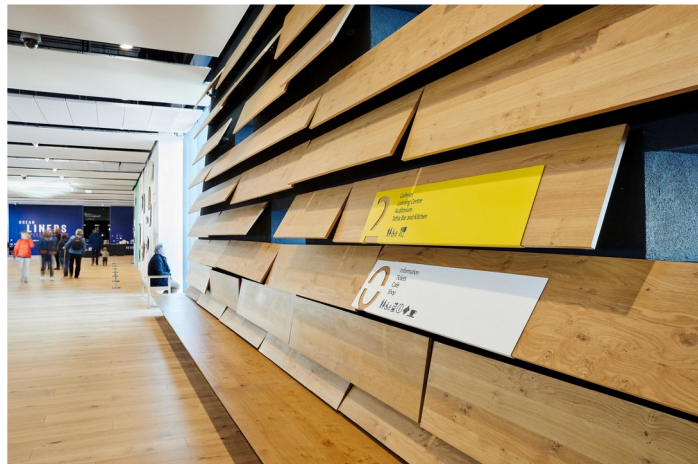
The Oak Room: A Mackintosh Masterpiece

Tearoom interior **designed by Charles Rennie Mackintosh in 1907** for Miss Cranston's Ingram Street Tearooms in Glasgow.

The Oak Room is displayed at the heart of V&A Dundee's Scottish Design Galleries, a permanent display showcasing the significance and relevance of design with a particular focus on Scottish achievement.



Detailing - Wayfinding



What can we learn from this building

Building is approximately the same size as our Helsinki design museum, but with only 2 exhibition spaces - our program has a lot more going on in addition to the exhibition spaces.

- Access to site from city

Opinion from The Guardian:

“Good design, as the contents of the galleries show, is purposeful, or joyous, or practical, or liberating, or any combination of the above. Too much of the new building just gets in the way.”

“The response to spectacular scenery need not always be panoramic transparent walls. As there can be beauty in framing, in selecting and unfolding, you await, as you progress through the building, the big reveal. The trouble is that it never comes”

