

LC-1331

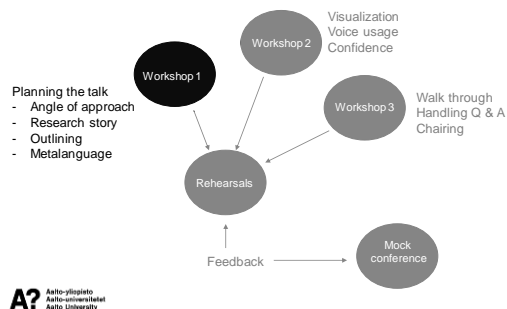
Workshop 2 Slide Design



Diane Pilkinton-Pinko, PhD

1

Last time



2

Assignments due today

Submit to MyCourses > Assignments

- > Presentation outline
- > Rough slides

Preparation for Workshop 2

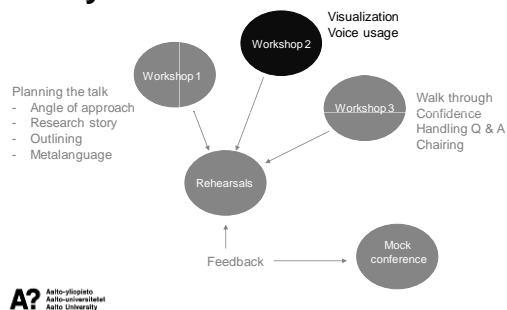
- > Listen to 6 short videos & prepare for discussing them



3

3

Today



4

Presentation basics

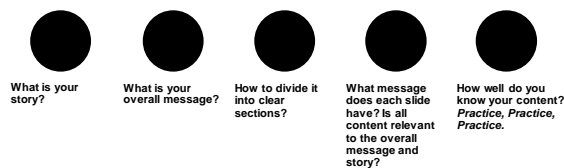
Discuss assertion-evidence
Review before and after slides
Ex 1: Write down messages
-- Break (15 min)
Ex 2: Draft master slides
Voice usage



5

5

The basics of designing and delivering a presentation include five aspects



6

Presentation basics
Discuss assertion-evidence
Review before and after slides
Ex 1: Write down messages
-- Break (15 min)
Ex 2: Draft master slides
Voice usage

A! Aalto-yliopisto
 Aalto-universitetet
 Aalto University

7

Preparation: Before Workshop 2


Listen to these six short videos and note down 2-3 key points from each. Be prepared to discuss the contents at Workshop 2.

1. PowerPoint's defaults are weak (~5 min) at [assertion-evidence.com](https://www.assertion-evidence.com)
2. Listen to videos (2-5) at <https://www.assertion-evidence.com/teaching-films.html>
3. First principle: Build your talk on messages (~6 min)
4. Second principle: Structure your message with visual evidence (~3 min)
5. Structuring a scientific presentation (~6 min)
6. Delivering an assertion-evidence talk (full version) (~6 min)
7. Thought-chunking at <https://www.youtube.com/watch?v=i5Qcc0Y1SK4&feature=youtu.be>


A? Aalto-yliopisto
 Aalto-universitetet
 Aalto University


8

Breakout rooms

 Discuss the key points of the (five) assertion-evidence videos

On slide design

 Use your Zoom room number to identify your group as you add your group's thoughts to <https://edu.filinga.fi/s/E6EXVP7>

 Try not to duplicate ideas

A? Aalto-yliopisto
 Aalto-universitetet
 Aalto University

9

In short, the assertion-evidence approach leads to more audience understanding and more projected confidence

Build your talk on messages, not topics

Support those messages with visual evidence

Explain that evidence by fashioning sentences on the spot



A? Aalto-yliopisto
 Aalto-universitetet
 Aalto University

11

To summarize, the assertion-evidence approach uses a more effective slide design than PowerPoint's default design

More readily understood

More memorable

More persuasive

12

Presentation basics
Discuss assertion-evidence
Review before and after slides
Ex 1: Write down messages
-- Break (15 min)
Ex 2: Draft master slides
Voice usage

A! Aalto-yliopisto
 Aalto-universitetet
 Aalto University

13

Before working on your slide design, see the before and after examples

MyCourses > Materials > Workshop 2 materials
> Examples of Before and After



14



15

This presentation shows transformations of slides from the traditional to the assertion-evidence design

Before

U.S. Resource Use

- The United States uses:
 - 42% of all the aluminum produced worldwide
 - 31% of all the petroleum
 - 29% of all the phosphate
 - 27% of all the copper
 - 27% of the nitrogen
 - 25% of the zinc
- Approximately 30% of all resources

After

Although the U.S. has 5% of the world's population, we use an average of 30% of all resources

Resource	Percentage of Worldwide Use
aluminum	42%
petroleum	31%
phosphate	29%
nitrogen	27%
zinc	25%

United States use of specific resources (percentage of worldwide use)

16

simula research laboratory

A First Step Towards Automatic PDE Code Verification

Hans Petter Langtangen, Ola Skaghaug, Simula Research Laboratory, Norway, University of Oslo, Norway

Before

PDE Code Verification

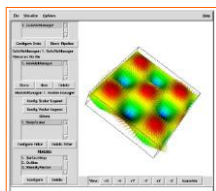
1/21

17

A First Step Towards Automatic Verification of PDE Code

Hans Petter Langtangen
Ola Skaghaug

Simula Research Laboratory
Oslo, Norway



simula research laboratory

18

Before and after
Examples from a previous student

A? Aalto-yliopisto Aalto-universitetet Aalto University

19

This presentation shows transformations of slides from the traditional to the assertion-evidence design



20

Content

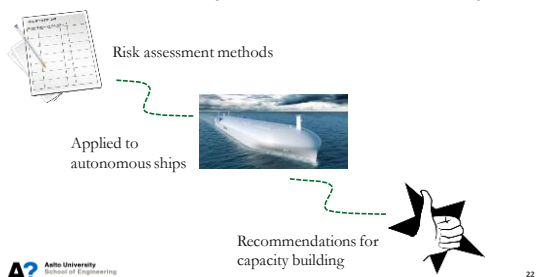
- Introduction
- Methods for autonomous ship safety
- Results of the initial step: VTA applied to the concept of autonomous ships
- Recommendations related to capacity building for autonomous ships
- Conclusion

Aalto University
School of Engineering

Slide 21

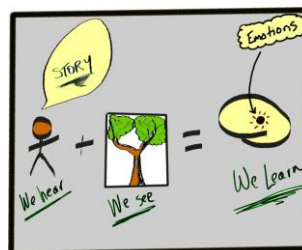
21

This talk explains risk assessment and what its results recommend for the operators of autonomous ships



22

22



Do you think this method of visual organisation will work for you?

23

Time to think about your rough slides

You will be asked to use this Assertion-Evidence design for your own slides during this course, consider

- What proportion of slides to text?
- What kind of assertion/claim are you making for each slide (title)?
- What kind of images could/should you use? Where can you find them?

Aalto-yliopisto
Aalto-universitetat
Aalto University

24

Presentation basics
Discuss assertion-evidence
Review before and after slides
Ex 1: Write down messages
-- Break (15 min)
Ex 2: Draft master slides
Voice usage

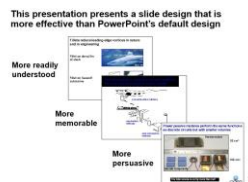
Aalto-yliopisto
Aalto-universitetat
Aalto University

25

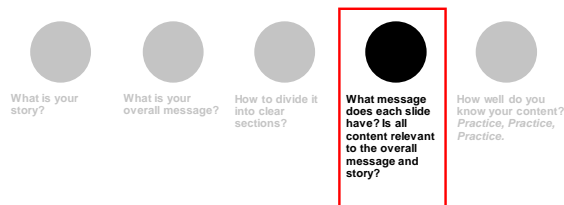
25

It's time to consider your slides

- What proportion of visuals vs text?
- What assertions/claims you are making for each slide? (Look at your headers)
- What kind of images would work? Where can you find them?

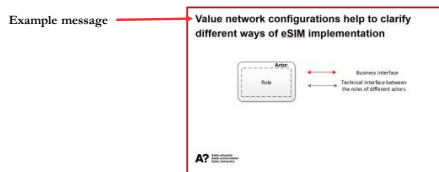


Exercise 1: As you develop your one-sentence assertions, think about this aspect



Exercise 1: On separate slides or sticky notes, write down messages for your presentation

Place each message on a different slide or sticky note
Use your rough outline as an aid; don't get trapped in your drafted slides



MyCourses

> Materials
> Sharing: Exercise 1
<https://mycourses.aalto.fi/mod/eth/erpadlite/view.php?id=1008536&cl=ass=d-flex%20align-items-center>



Share 2-3 examples of your messages



Make comments on peers' work

Topic vs message
Length: 2 lines max

Presentation basics
Discuss assertion-evidence
Review before and after slides
Ex 1: Write down messages
-- Break (15 min)
Ex 2: Draft master slides
Voice usage

Presentation basics
Discuss assertion-evidence
Review before and after slides
Ex 1: Write down messages
-- Break (15 min)
Ex 2: Draft master slides
Voice usage

Exercise 2: Use your messages to draft assertion-evidence master slides with these specifications

Maximum length: Two lines

Specifications

Header

- Size: 28 pt (Arial)
- Spacing: 7,5
- Line spacing before: exactly 35 pt

Value network configurations help to clarify different ways of eSIM implementation

A? Aalto-yliopisto
Aalto-universitetet
Aalto University

32

Exercise 2: Use your messages to draft assertion-evidence master slides with these specifications

Maximum length: Two lines

Specifications

Header

- Size: 28 pt (Arial)
- Spacing: 7,5
- Line spacing before: exactly 35 pt

One text box

- Text left flush (not centered)

Value network configurations help to clarify different ways of eSIM implementation

A? Aalto-yliopisto
Aalto-universitetet
Aalto University

33

Exercise 2: Draft assertion-evidence slides

MyCourses > Materials > Workshop 2 Materials >

Aalto University PowerPoint Templates (updated on Aalto computers)

- Create a master slide
 - Use a header that is 28 pt (Arial)
 - Set the spacing as 7,5 before and the line spacing as exactly 35 pt

Insert one text box

Assertion-evidence Templates

- Create a master slide with the Aalto logo

34

Exercise 2: Draft assertion-evidence slides

MyCourses > Materials > Workshop 2 Materials

Aalto University PowerPoint Templates (updated on Aalto computers)

Aalto University visual material

- <http://materialbank.aalto.fi> > Photos, logos, guidelines

Assertion-evidence (A-E) Templates

- <https://www.assertion-evidence.com/templates.html> > Create a master slide with the Aalto school and logo

Using either an Aalto or A-E template ...

- Create a master slide for the body of the presentation
 - Use a header that is 28 pt (Arial)
 - Set the spacing as 7,5 before and the line spacing as exactly 35 pt
- Insert one text box

35

Presentation basics
Discuss assertion-evidence
Review before and after slides
Ex 1: Write down messages
-- Break (15 min)
Ex 2: Draft master slides
Voice usage: pausing & chunking

A! Aalto-yliopisto
Aalto-universitetet
Aalto University

36

Pausing allows you to package or chunk information into meaningful units and emphasis

Those who sold quickly / made a profit
a profit is made by those who sold quickly

Those who sold / quickly made a profit
a profit is quickly made by those who sold

A? Aalto-yliopisto
Aalto-universitetet
Aalto University

37

How does pausing change the meaning of these pairs?

- a) I saw a man/ eating shark
 b) I saw/ a man eating shark
- a) My father who studied in Britain/ was an HVAC engineer
 b) My father/ who studied in Britain/ was an HVAC engineer



38

Follow up

Watch the video on thought chunking (under assignments)



39

Assignments



40

Assignments

1. Prepare for the walk-through (next time)

- Finish re-working your visuals (slides) using the assertion-evidence approach (You'll need this for walking your partner through your presentation)
- Write out the opening lines of your Introduction + how you will Conclude or the final words (You'll need this for voice practice with thought chunking)
- Watch this short video on thought chunking <https://youtu.be/i5Qcc0Y1SK4>

2. Watch these two short videos on confidence at

<https://www.assertion-evidence.com/confidence.html>

Note important points and be prepared to discuss them at the next session

3. On handling the Q&A, what kind of questions do you think you'll get? If you have time, write them down



41

Next time

Five themes

- Confidence
- Walk-through
- Handling Q&A
- Chairing a talk/ introducing the speaker
- Writing a conference abstract



42