

Manual for full student license of PLECS

In order to get a free full student license of PLECS, valid for one year, you must obtain a personal code from your professor. You can choose to obtain a license for PLECS Blockset (for use with MATLAB/Simulink) or PLECS Standalone. To download PLECS, please go to Plexim's website (<http://www.plexim.com/download>).

1. Installing PLECS Blockset

<http://www.plexim.com/download/blockset>

The screenshot shows the 'Download' section of the Plexim website. The main heading is 'PLECS Blockset Packages'. Below this, there is a table of supported platforms and MATLAB versions. To the left of the table, there are several informational boxes: 'Download', 'Documentation', 'PLECS Blockset', 'Previous Versions', 'PLECS Standalone', 'PLECS Trial License', and 'Price Information'. The 'PLECS Trial License' box contains a play button icon and text asking if the user wants to test PLECS for 30 days. The 'Price Information' box contains a play button icon and text asking if the user needs PLECS for their company or university.

Platform	Matlab version	Name
Microsoft Windows 32-bit	6.5 ... 8.0	plecs-blockset-3-3-4_win32.exe [40407400 bytes]
Microsoft Windows 64-bit	7.4 ... 8.0	plecs-blockset-3-3-4_win64.exe [43141992 bytes]
Mac / Intel 32-bit	7.4 ... 8.0	plecs-blockset-3-3-4_maci.tar.gz [44413087 bytes]
Mac / Intel 64-bit	7.9 ... 8.0	plecs-blockset-3-3-4_maci64.tar.gz [44449350 bytes]
Linux / Intel 32-bit	7.4 ... 8.0	plecs-blockset-3-3-4_linux32.tar.gz [46942035 bytes]
Linux / Intel 64-bit	7.4 ... 8.0	plecs-blockset-3-3-4_linux64.tar.gz [44904174 bytes]

a) Download and install the necessary PLECS package according to the installation instructions on the Plexim website.

b) Start MATLAB (don't forget to set the path in the menu "File/Set path.."). Type "plecsedit hostid" in the command window.

Output Example: ans =
User: Mr Example
HostID: "0011aa22ee66"
MATLAB: "111111"
Floating: "0"

You can obtain the MATLAB license number by typing "license" in the Matlab command window.

<http://www.plexim.com/store/students>

The screenshot shows the 'Student License' page on the Plexim website. The main heading is 'Student License'. Below this, there is a form for entering a personal code and a Host ID. To the left of the form, there are several informational boxes: 'Store', 'Trial software', 'Commercial', 'Academic', 'Students', 'PLECS Trial License', and 'Price Information'. The 'PLECS Trial License' box contains a play button icon and text asking if the user wants to test PLECS for 30 days. The 'Price Information' box contains a play button icon and text asking if the user needs PLECS for their company or university.

c) Enter your personal code. Watch out for the correct spelling, especially upper and lower case letters.

d) Enter your Host-ID as indicated on the website.

Home PLECS Products Store Download Support Events Company

plexim
electrical engineering software

Home > Checkout >

Request license

Trial license

Product
PLECS Combo Student License Host ID: USERHOST=Mr+Example+0011aa22ee66 Code provided by your professor: [REDACTED]

Contact information

Salutation *

First name *

Last name *

Company / University *

Department

Country *

Street address 1 *

Street address 2

Postal Code *

City *

Phone *

Fax

Email *

Comment

or

e) Fill in the form completely and correctly. We will handle your information confidentially and we will not make it available to third parties.

You will receive the license file by email after your information has been verified.

f) Copy the license file into your PLECS folder, start MATLAB and enter "plecslib" in the command window to start PLECS.

We wish you great success working with PLECS!

2. Installing PLECS Standalone

<http://www.plexim.com/download/standalone>

Home PLECS Products Store **Download** Support Events Company

plexim
electrical engineering software

Home > Download >

Download PLECS Standalone Packages

The table below shows the platforms currently supported by PLECS Standalone. Download the appropriate package file and follow the install instructions.

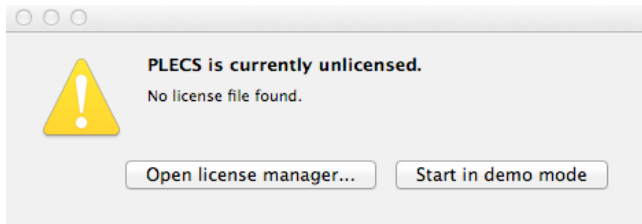
Platform	Name
Microsoft Windows 32-bit	plecs-standalone-3-3-4_win32.exe (53805928 bytes)
Microsoft Windows 64-bit	plecs-standalone-3-3-4_win64.exe (59106152 bytes)
Mac / Intel 64-bit	plecs-standalone-3-3-4_maci64.dmg (46274341 bytes)
Linux / Intel 32-bit	plecs-standalone-3-3-4_linux32.tar.gz (46541466 bytes)
Linux / Intel 64-bit	plecs-standalone-3-3-4_linux64.tar.gz (45584076 bytes)

PLECS Trial License

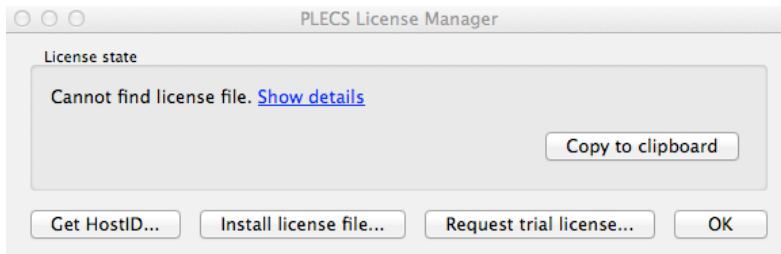
Do you want to test PLECS with your own applications? Get a free trial license valid for 30 days!

a) Download and install the necessary PLECS package according to the installation instructions on the Plexim website.

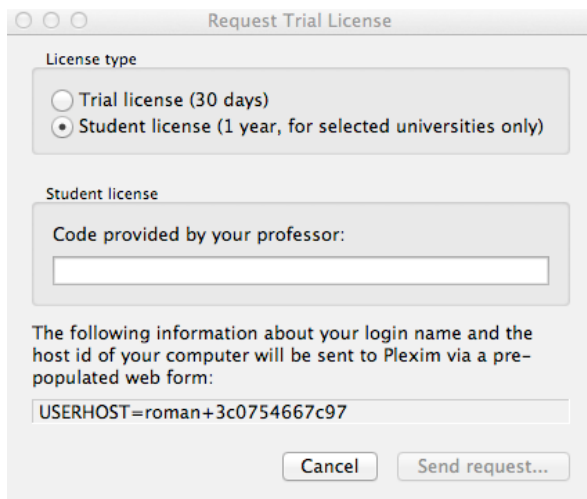
b) Start PLECS. The following message will display:



c) Open the license manager...



d) Request trial license...



e) Choose "Student license" and enter your personal code. Watch out for the correct spelling, especially upper and lower case letters.

f) Send request...

Home PLECS Products Store Download Support Events Company

plexim
electrical engineering software

Home > Checkout >

Request license

Trial license

Product

PLECS Combo Student License
 Host ID:
 USERHOST=Mr+Example+0011aa22ee66
 Code provided by your professor:
XXXXXXXXXX

Contact information

Salutation *

First name *

Last name *

Company / University *

Department

Country *

Street address 1 *

Street address 2

Postal Code *

City *

Phone *

Fax

Email *

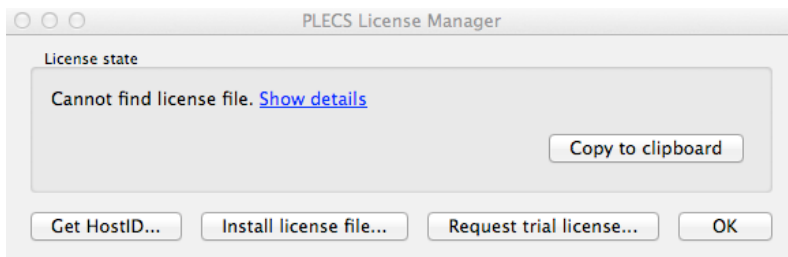
Comment

or

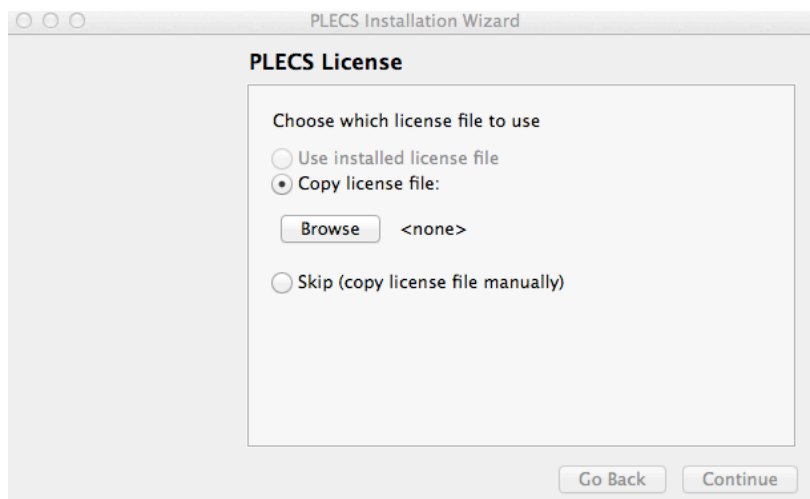
g) You will be redirected to our website. Fill in the form completely and correctly. We will handle your information confidentially and we will not make it available to third parties.

You will receive the license file by email after your information has been verified.

h) Start PLECS and open the "license manager".



i) Install license file...



j) Install the license file that we have emailed to you. If you want to install the license file manually, please copy the license file into your PLECS folder and start PLECS.

We wish you great success working with PLECS!