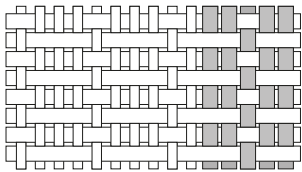


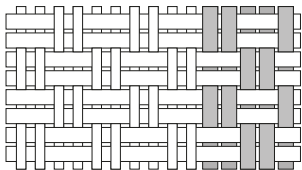
# STRIPED WARP (PA+PA)

- PLAIN WEAVE
- BASKET WEAVE
- WEFT-FACED RIB WEAVE
- CREPE WEAVE

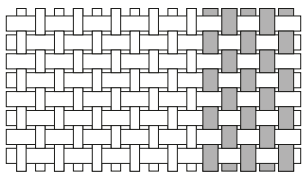
## SEERSUCKER



1:3 RIB WEAVE



2:2 BASKET WEAVE



PLAIN WEAVE

■ MONOFILAMENT YARN (PA)

■ SPIRAL YARN (PA)

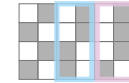
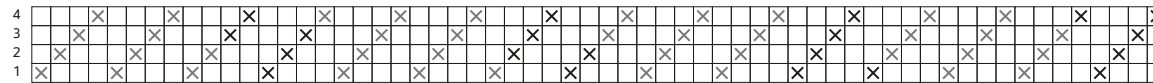
PATTERN REPEAT 45 OR 60 ENDS



SLACK TENSION      FIRM TENSION

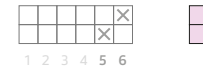


WARP YARN REPEAT 10 + 5 = 15 ENDS



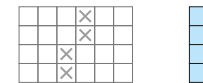
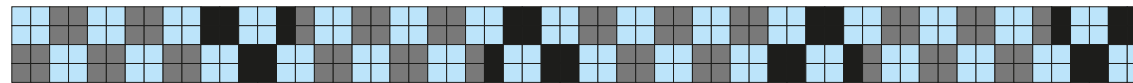
THREADING REPEAT 4

C 1:3 RIB WEAVE



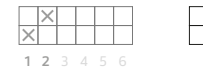
WEAVE REPEAT 4 ENDS x 2 PICKS

B 2:2 BASKET WEAVE



WEAVE REPEAT 4 ENDS x 4 PICKS

A PLAIN WEAVE



WEAVE REPEAT 2 ENDS x 2 PICKS

THREADING AND CLOTH DIAGRAM

TIE-UP AND TREADLING