

Typoe @

Writtten

Language

In  
ancient  
times...

THE TYPE & WRITTEN LANGUAGE STUDIO allows participants to examine writing and any of its properties – outside the 'meaning' of a text. That is, the studio exists for exploring the essential techniques and tools of writing – writing systems and typography – in a creative, open-ended manner.

**IN PRACTICAL TERMS**, students will embark on a practice-based or artistic research project, the outcome of which could be, for example, a new typeface, an imaginary writing system, a self-generating encyclopaedia, or an experimental mark-making performance.

**THIS SPRING**, students may choose between either articulating their own research question and project plan, or following a more structured framework, which will result in a new typeface designed during the studio, and presented in a type specimen at the end of it.

(No prior experience in type design is necessary.)

ROUTE

A:

open

brief

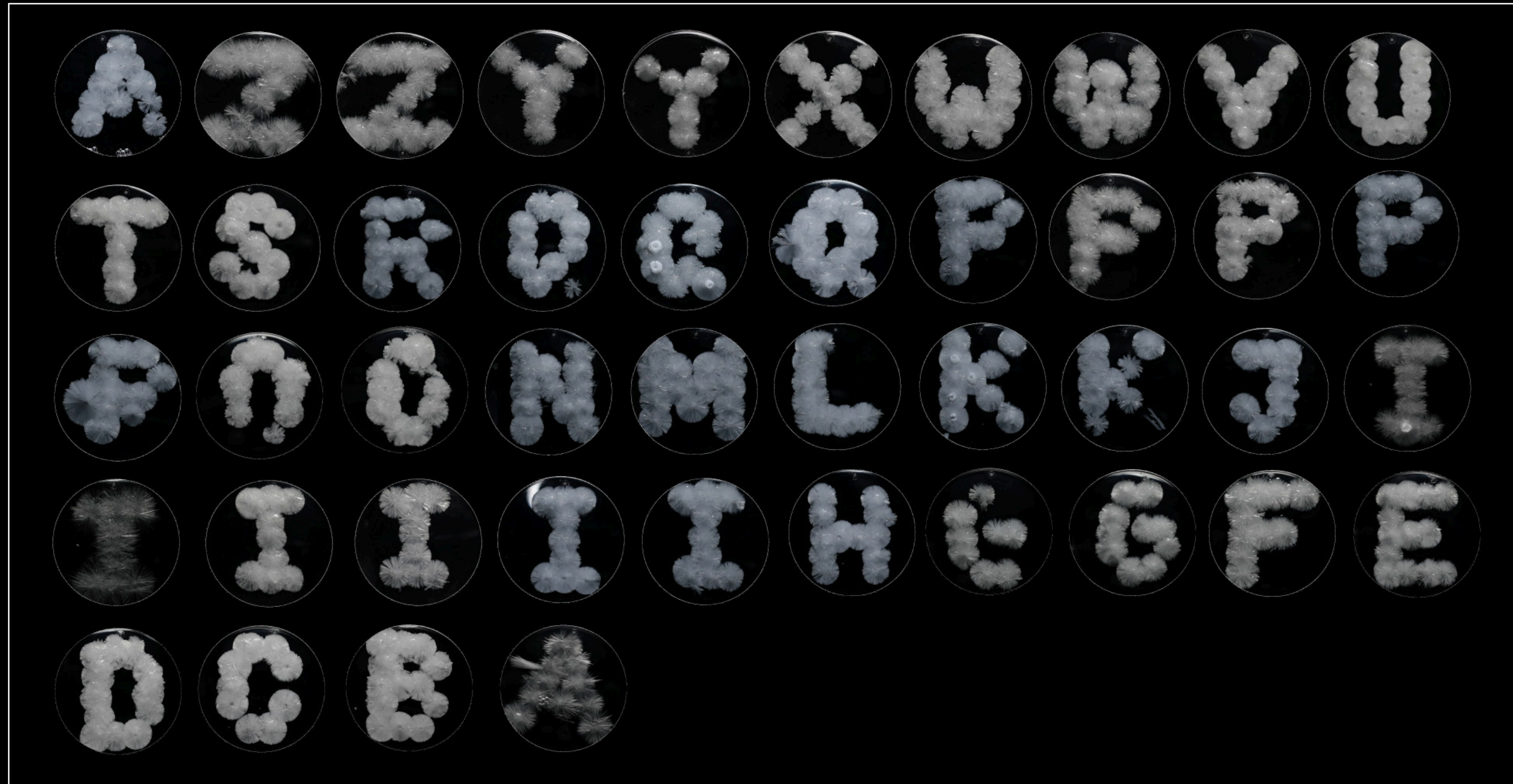
ROUTE

B:

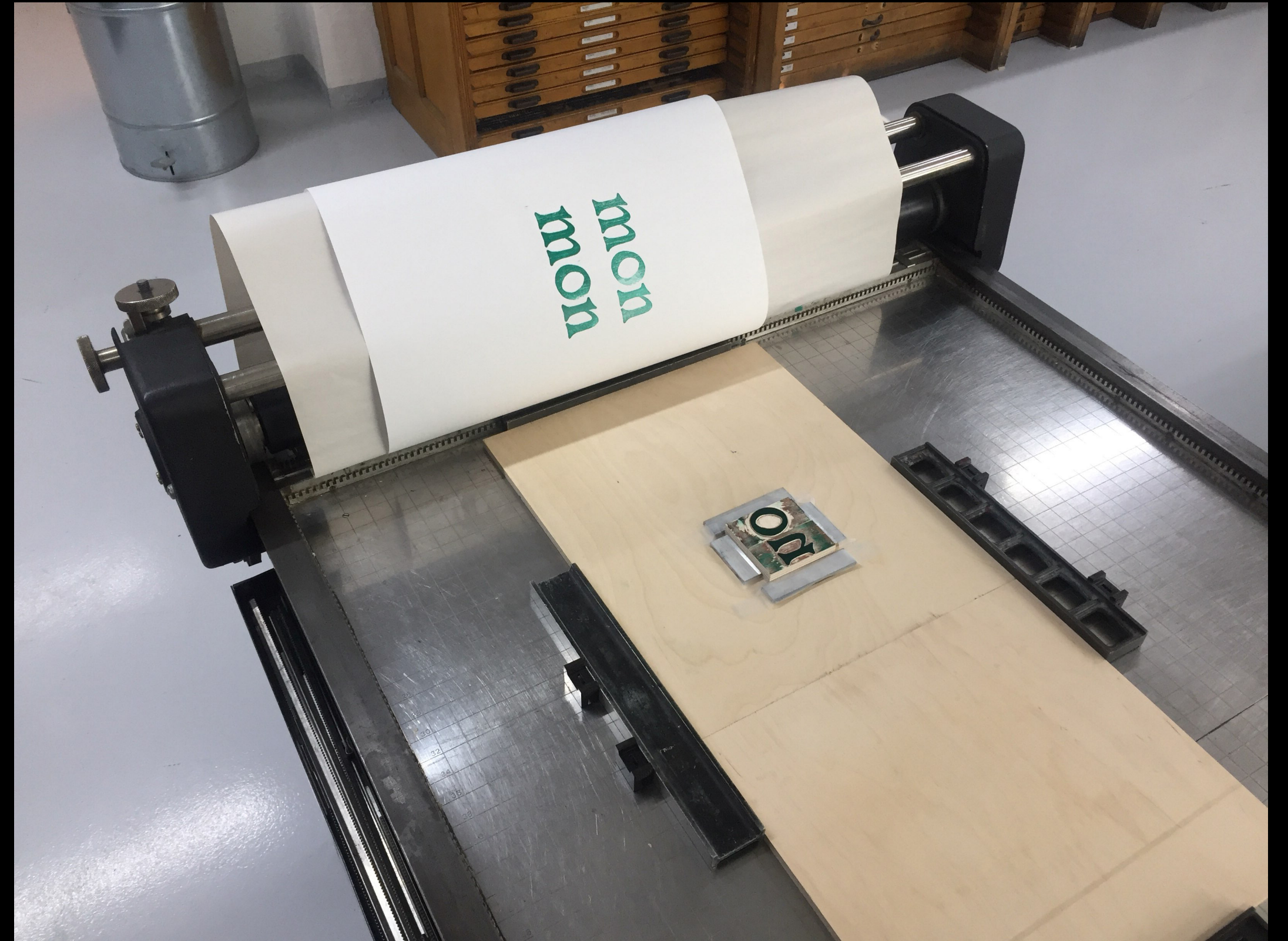
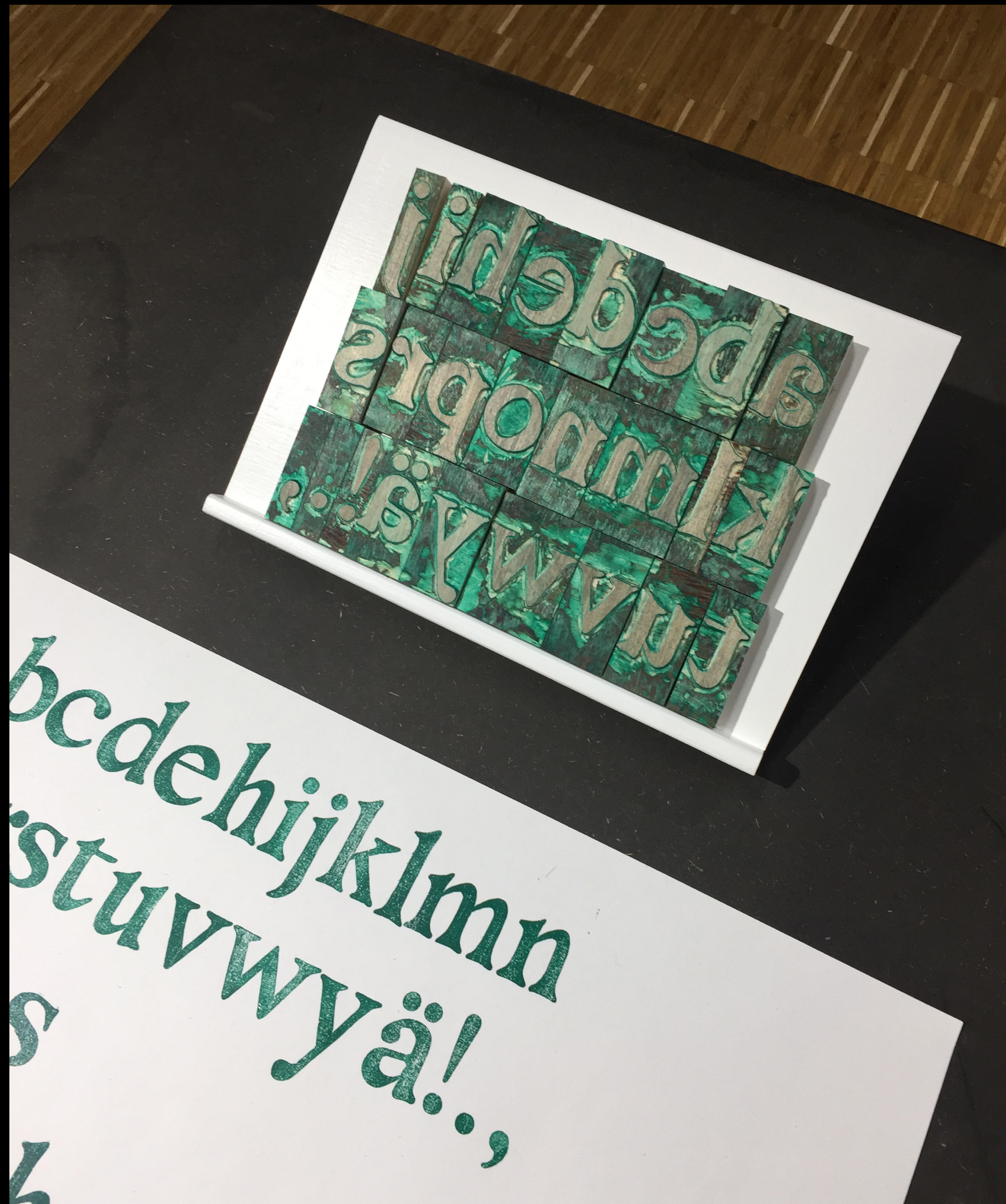
Type

design

# HARES BASSIL



KATRI ASTALA





BACK THEN  
THEY DIDN'T  
EVEN NEED  
TO GIVE YOU  
A REASON.

SORRY  
LADDS  
YOU'RE  
NOT  
COMING  
IN

IT WAS DOWN  
TO RACE.

The daytimers were short lived stopped taking in the 90's but didn't mark the of the Bhangra The music cont evolved and wer win awards, top as well as influer and collaborate mainstream We musicians then.





Latin Basic

Latin Basic

Aa Bb Cc Dd Ee Ff

Gg Hh Ii Jj Kk Ll Mm

Nn Oo Pp Qq Rr Ss Tt

Uu Vv Ww Xx Yy Zz

# TYPE DESIGN BRIEF

Choose one of each:

- a) an extinct type foundry
- b) a sculptor or an architect
- c) a piece of narrative fiction

Combine the visual language and/or vibes of all three references into one or more typefaces, and present these in a type specimen.

# TYPE DESIGN BRIEF

These could be, for example,

- a) La Fonderie Olive (Marseille, 1863–1978)
- b) Isamu Noguchi (1904–1988)
- c) *PlayTime* (dir. Jacques Tati, 1967)



IN ADDITION TO INDIVIDUAL PROJECTS, participating students are asked to plan and run a 60-minute workshop ('Practical Interlude') for the rest of group at some point during the spring. Practical Interludes are meant as occasions for students to share key aspects and questions relevant to their practice. This might mean getting feedback on something they've designed, beta-testing new typographic tools and drawing instruments, or making a site visit to a place relevant to their project and/or practice.

THE STUDIO WILL BE ORGANISED  
primarily on Discord.

IF YOU HAVE ANY QUESTIONS,  
please don't hesitate to message me at  
[tuomas.kortteinen@aalto.fi](mailto:tuomas.kortteinen@aalto.fi).