

Measurements Versus Simulation

Kari Saine, 9-10.5.2023

Aalto University Vibration Course 9-10.5.2023 / K.Saine



1

Introduction

- Kari Saine, Noise & Vibration engineer, whole my carier I have worked at R&D department at Wärtsilä Vaasa Factory
- Graduated at Tampere University of technology 1986
- Be supervisor about 35 M.Sc or B.Sc thesis
- Published about 60 papers in international conferences or magazines
- Last 25 years kept this kind of vibration and noise courses

Aalto University Vibration Course 9-10.5.2023 / K.Saine



2

Contents

1. Vibration FFT analyzers
2. Basic theory and glossary
3. Wärtsilä vibration standard
4. Flexible mounting
5. Natural frequencies
6. Measurements and instruments
7. Engine excitations
8. Vibration at ships

3

Background

- Since man began to build machines for industrial use and especially since motors have been used to power them, problems of vibration and isolation have engaged engineers.
- Early days the machines were heavy and slow-speed engines. Nowadays with finite element method (FEM) it is possible to optimize the structures. As consequence the natural frequencies of the structures have fallen down to the rotating speed of the engines.
- Gradually as vibration isolation and reduction techniques have become an integral part of the machine design, the need for accurate measurement and analysis of mechanical vibration has grown.
- A whole new technology of vibration measurement has been developed which is suitable for investigating modern highly stressed, high-speed machinery. What is possible today, was not possible 25 years ago.
- **Measurements are one of most undervalued science today.**

4

Tacoma bridge

<http://www.youtube.com/watch?v=3mclp9QmCGs>



Tacoma bridge, 1.9 km, was collapsed at November 7 1940, four months after opening at wind speed 65 km/h



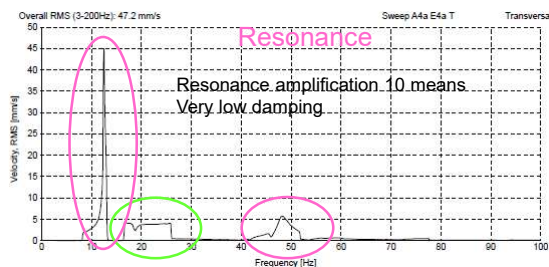
Aalto University Vibration Course 9-10.5.2023 / K.Saine



5

Resonance

- **When a system is in resonance the excitation force has the same frequency as the natural frequency of the structure.**
- **A small change in the excitation frequency causes an increase/decrease in the system response or small forces can cause high vibration level. Most vibration problems are related to resonance phenomena.**

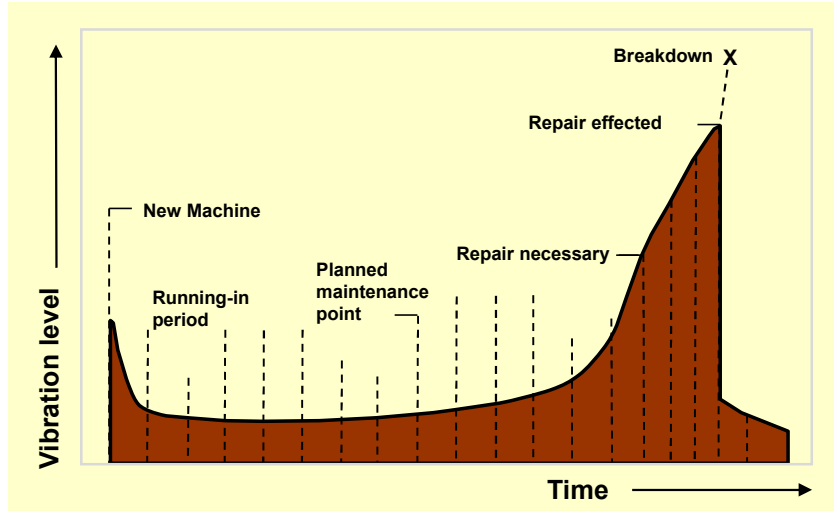


Aalto University Vibration Course 9-10.5.2023 / K.Saine



6

Introduction to Vibration

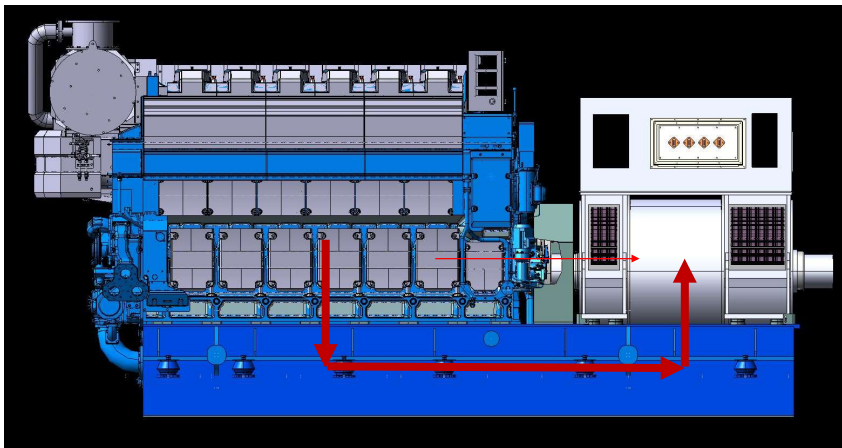


Aalto University Vibration Course 9-10.5.2023 / K.Saine



7

Aggregate



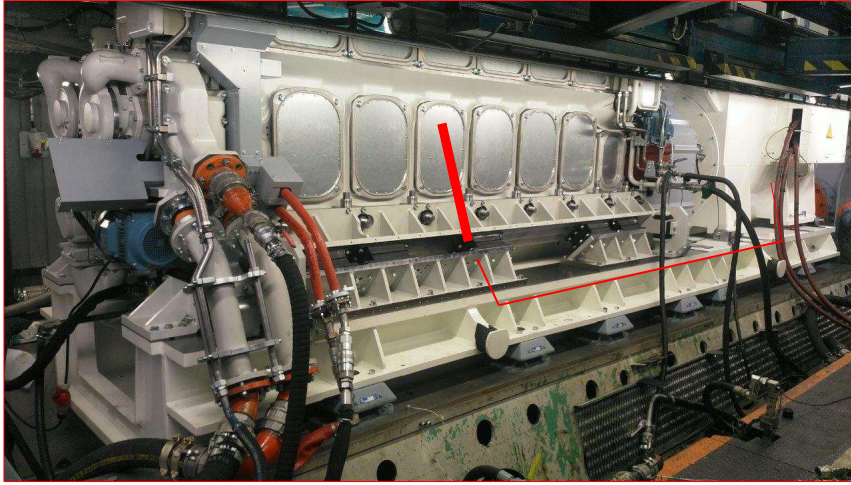
Aggregate W6L32 engine together with steel common base frame and alternator

Aalto University Vibration Course 9-10.5.2023 / K.Saine



8

Double flexible aggregate



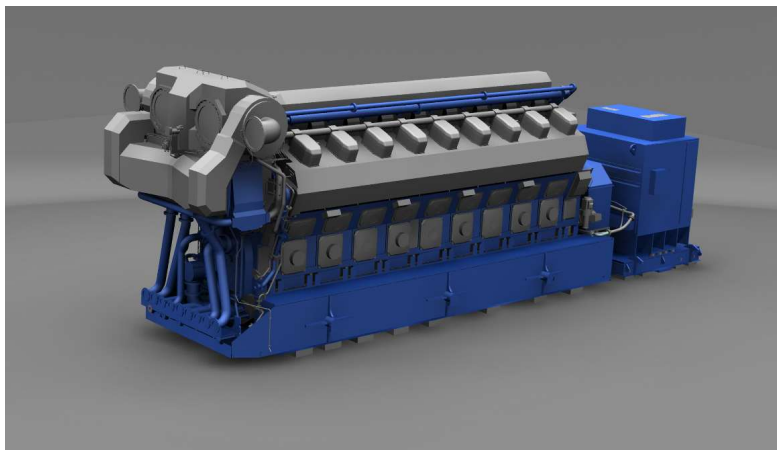
Rubber elements are eliminated 90% engine excitations when is used flexible mounted engine

Aalto University Vibration Course 9-10.5.2023 / K.Saine



9

Back to Basic = New aggregate



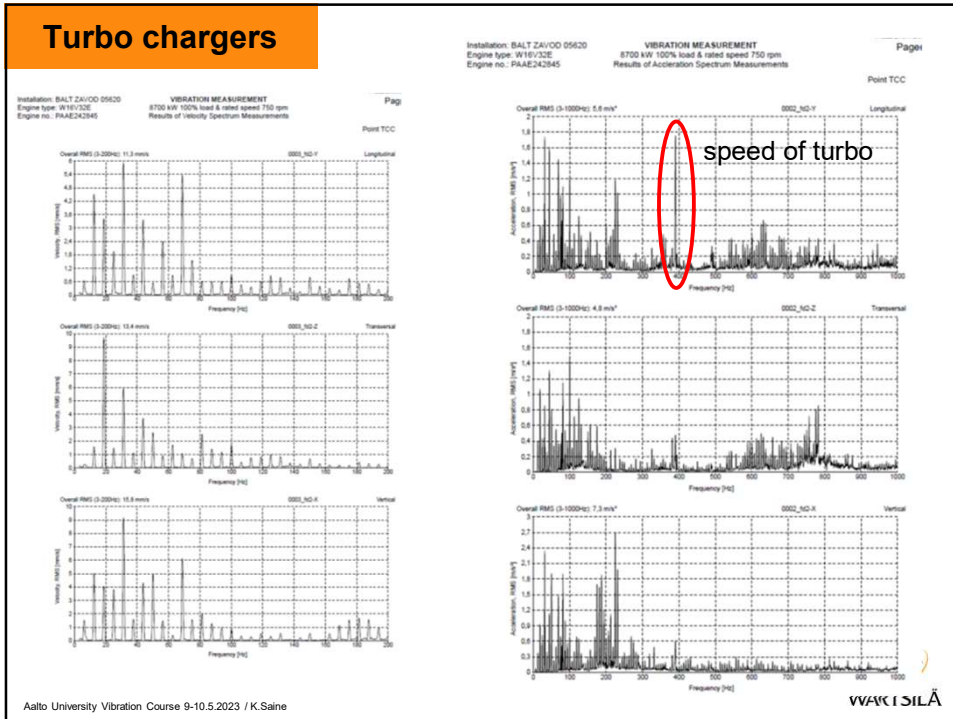
Today is used separate engine frame. Now alternator can design as normal cases.

Aalto University Vibration Course 9-10.5.2023 / K.Saine



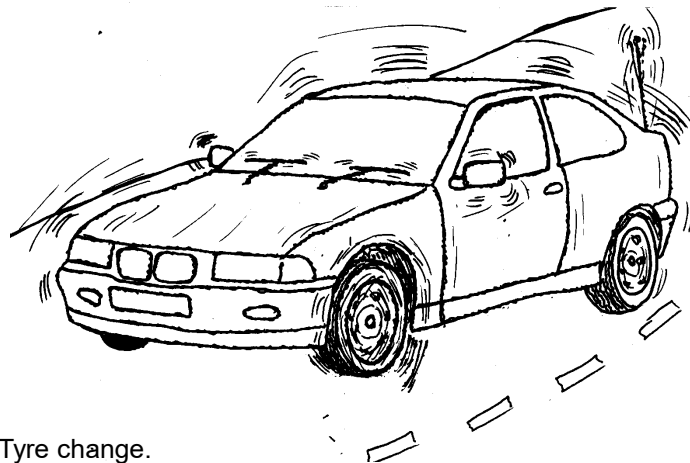
10

Turbo chargers



11

Introduction to Vibration



Tyre change.

Why car is shaking more when speed increase?

12

Vibration instruments



Aalto University Vibration Course 9-10.5.2023 / K.Saine



13

OROS – Measurement and Analysis Solutions

- Today multi channels FFT (Fast Fourier Transformation) analyzers are light, portable and very powerful instruments.
- 3D accelerometers are standard sensors. With these could be measured easy way up to 10 kHz at temperature 150 degree.
- The advance of the multi channels analyzers it is possible to measured mode shapes of the sturcture
- Today 8-channels analyzers are basic instruments, even 32 or 64 channels are quite common



- Instruments
- Software
- Services



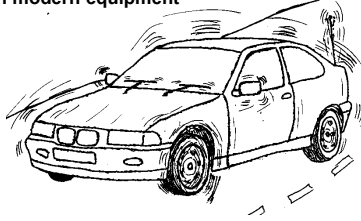
Aalto University Vibration Course 9-10.5.2023 / K.Saine



14

Vibration measurements & analyses

Evaluation of the vibration results with modern equipment

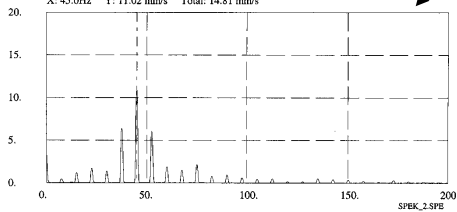


Hand-held meter and multi channels analyser

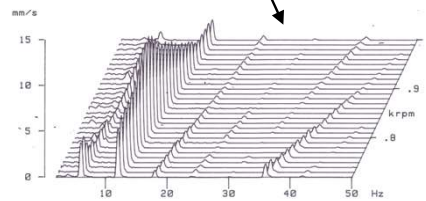


Vibration spectrum

E4 V common base frame, n=900 rpm, P=100%=1100 kW
X: 45.0Hz Y: 11.02 mm/s Total: 14.81 mm/s



Waterfall diagram



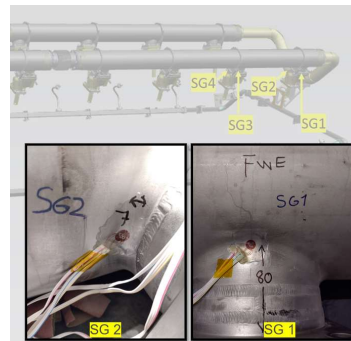
Measurement

Aalto University Vibration Course 9-10.5.2023 / K.Saine

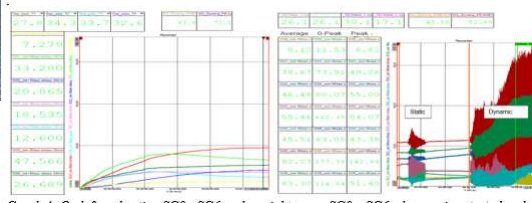


15

Stress measurements



With very small and powerful instrument could be measured both static and dynamical stress levels, like HBK Catman MX1615B



Aalto University Vibration Course 9-10.5.2023 / K.Saine



16

QuantumX Strain Gage Bridge Amplifier



Easier than ever - one single cable

- Power distribution (1.5 A left and right of the powered module)
- Up to 5 m cable in between every module (12 in a row makes 60 m)
- Data transport from input to Data Recorder, PC or Gateway
- Highly time-sync'd with < 1 μs module to module (auto master)
- Real-time isochronous EtherCAT, voltage output or CAN bus

Bridge module with universal inputs and unique channel density

- 16 universal inputs measure (Push-in, 8p)

Every single input supports

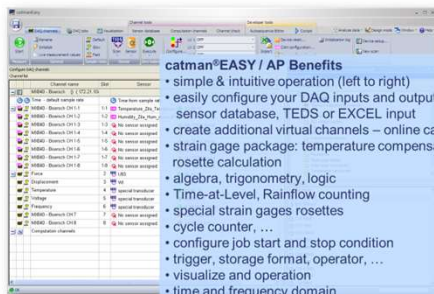
- Strain gage **full bridge** with 6 wire technology
- Strain gage **half bridge** with 5 wire technology
- Strain gage **¼ bridge** in 3 or 4 wire configuration,
 - MX1615B:** 120 and 350 Ohm completion resistor inside
 - MX1616B:** 350 and 1000 Ohm
- internal shunt resistor (100 kOhm)
- Selectable excitation voltage: 0.5 / 1 / 2.5 or 5 V (DC or CF with 1200 Hz)
- Voltage +/- 15 V, differential
- PT100, Potentiometer, Resistance

Data rates up to **20 kS/s** per channel (signal bandwidth up to 3 kHz)



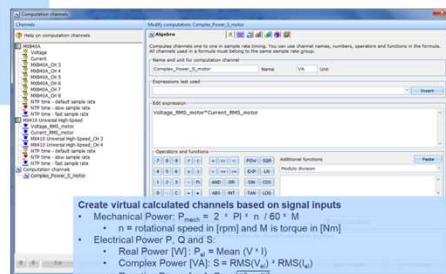
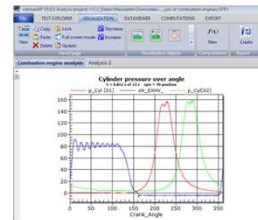
16 plugs included

CATMAN - Software



catman®EASY / AP Benefits

- simple & intuitive operation (left to right)
- easily configure your DAQ inputs and outputs via sensor database, TEDS or EXCEL input
- create additional virtual channels — online calculation
- strain gage package: temperature compensation, rosette calculation
- algebra, trigonometry, logic
- Time-at-Level, Rainflow counting
- special strain gages rosettes
- cycle counter, ...
- configure job start and stop condition
- trigger, storage format, operator, ...
- visualize and operation
- time and frequency domain
- push button to operate (start, stop, panels)
- automate by script
- create report in word or pdf format



Create virtual calculated channels based on signal inputs

- Mechanical Power: $P_{mech} = 2 \cdot \pi \cdot n \cdot M$
 - n = rotational speed in [rpm] and M is torque in [Nm]
- Electrical Power P , Q and S :
 - Real Power [W]: $P_R = \text{Mean}(V \cdot I)$
 - Complex Power [VA]: $S = \text{RMS}(V_u) \cdot \text{RMS}(I_u)$
 - Reactive Power [var]: $Q = \sqrt{S^2 - P^2}$
 - Apparent Power [VA]: $|S| = \sqrt{P_R^2 + Q^2}$
 - Power Factor $\cos \varphi = P_R / S$
 - Overall Efficiency: $\eta = P_{mech} / P_R$

OROS - Portable Noise & Vibration Analyzers

Made for the Field

- 2 to 64 channels
- Portable
- Rugged
- Real-time Analysis

Flexible

- Online & Post Analysis
- Signal Conditioning
- Multi-Analysis
- Remote Access
- PC Free Operation
- Cascadable: 320+ ch.
- Customization

Accurate

- DSP-based
- 24 Bit - 40 kHz
- $\pm 40V$ input range
- ± 0.02 dB / $\pm 0.02^\circ$



Services

- Customer Care Department
- Expertise and Assistance
- Premium Contracts
- Training
- Customized Applications



Aalto University Vibration Course 9-10.5.2023 / K.Saine



19

OROS

Software

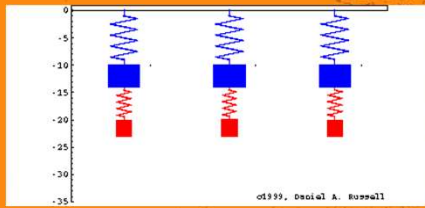
Designed for your Application

- Unique software platform
 - Recording
 - FFT
 - Time Domain Analysis
 - Monitoring
- Rotating Analysis
 - Rotating Speed Measurements
 - Envelope Demodulation
 - Constant Band Tracking
 - Synchronous Order Analysis
 - Turbo machinery Vibration
 - Torsion
 - Balancing
 - Waterfall, data Buffer
- Structural Analysis
 - Operating Deflection Shape
 - Modal Analysis
 - FRF and Cross-Spectrum Acquisition
 - Advanced Swept Sine
- Acoustical Analysis
 - 1/n Octave Analysis
 - Overall Acoustics: Levels & Profiles
 - Sound Power
 - Sound Intensity
 - Sound Mapping and Source Localization
- Stress measurements

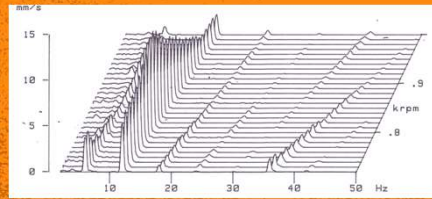
Aalto University Vibration Course 9-10.5.2023 / K.Saine



20



Basic Theory



What is vibration?

Noise and vibration in the environment or in industry are caused by particular processes where **dynamic forces** excite structures.

In any given situation there are always three factors, which have been examined before solving noise/vibration phenomena's

- * **Source** - where the dynamic forces are generated
- * **Path** - how the energy is transmitted
- * **Receiver** - how much noise/vibration can be tolerated

Introduction to Vibration

DISPLACEMENT (mm) relevant at low frequency part of the spectrum. Frequency range up to 30 Hz. Due to Mass forces/resilient mounting system;

VELOCITY (mm/s) corresponds to a given energy level of the system. Typical frequency range 10-300 Hz. It is recommended to use this. It is related to stress level of the measured component.

ACCELERATION (m/s²) measurements are weighted towards high frequency vibration components, used where the frequency range of interest cover high frequencies range from 100 Hz up: turbochargers and electronic components or little mechanical components rigidly connected to engine structure. It is related to force level of the measured component.

The relationship between displacement, velocity and acceleration amplitudes can be described by formulas including vibration frequency and time.

Introduction to Vibration

Relationship between displacement $x(t)$, velocity $v(t)$ and acceleration $a(t)$ amplitudes can be described by derivation or integration.

$$x(t) = X \cdot \sin(\omega \cdot t + \varphi)$$

$$v(t) = \frac{dx(t)}{dt} = \omega \cdot X_p \cdot \cos(\omega \cdot t) = V_p \cdot \cos(\omega \cdot t)$$

$$a(t) = \frac{dv(t)}{dt} = \frac{d^2x(t)}{dt^2} = -\omega^2 \cdot X_p \cdot \sin(\omega \cdot t) = -A_p \cdot \sin(\omega \cdot t)$$

speed

Introduction to Vibration

AMPLITUDES

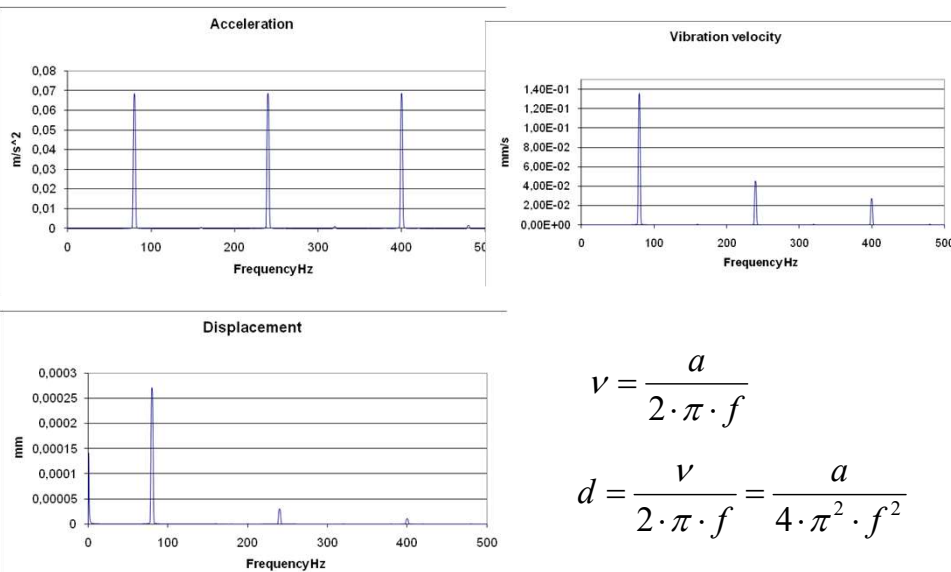
- Velocity
- Acceleration
- Displacement
- Strain
- Torque
- Pressure
- Power Spectrum Density
- Energy Spectrum Density
- etc ...

Aalto University Vibration Course 9-10.5.2023 / K.Saine



25

Relation, acceleration, velocity and displacement



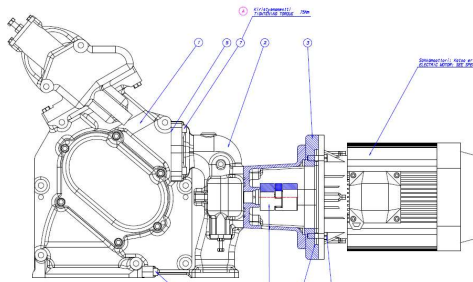
$$v = \frac{a}{2 \cdot \pi \cdot f}$$
$$d = \frac{v}{2 \cdot \pi \cdot f} = \frac{a}{4 \cdot \pi^2 \cdot f^2}$$

Aalto University Vibration Course 9-10.5.2023 / K.Saine



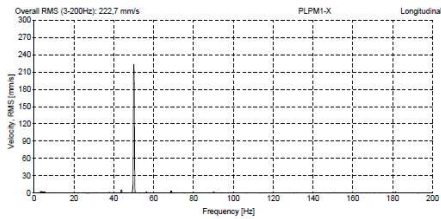
26

Pre lubricating pump



During our standard vibration measurements were measured very high vibration levels on the motor of the lube oil pump for W8L32 engine

Firing frequency, order 4, 50 Hz with amplitude over 200 mm/s !

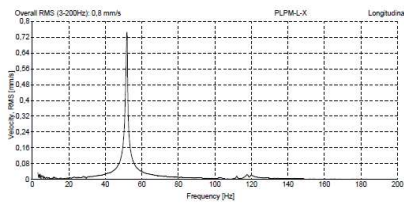


Aalto University Vibration Course 9-10.5.2023 / K.Saine

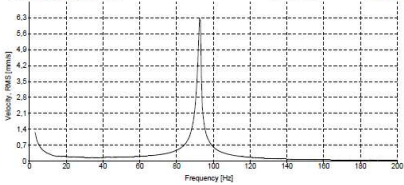


27

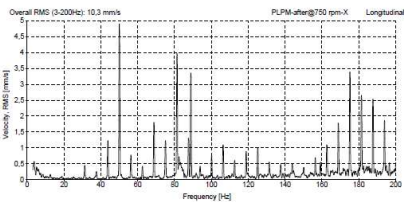
Pre lubricating pump



The reason for high vibration level was the natural frequency of the cantilever, which was 50 Hz (resonance).



After adding the extra support the natural frequency increase to 90 Hz.



In consequence the vibration levels dropped to the tenth, from 200 mm/s to 20 mm/s.

Totally this took nine days.

Aalto University Vibration Course 9-10.5.2023 / K.Saine



28

What is vibration?

Three significant components of vibration technique are:

AMPLITUDE
FREQUENCY
PHASE

AMPLITUDE is amount of vibration,
FREQUENCY is its repetition,
and **PHASE** is relationship of one vibration to another.

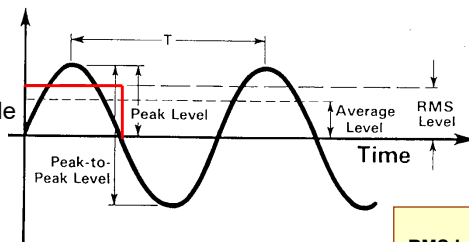
Aalto University Vibration Course 9-10.5.2023 / K.Saine



29

Quantifying the vibration levels

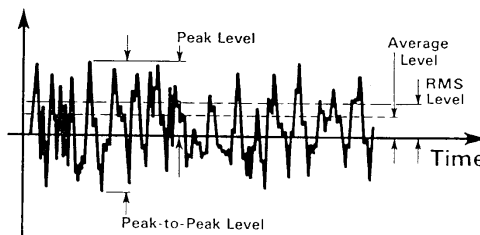
The area of rectangle and sinusoidal are same



$$\text{RMS Level} = \sqrt{\frac{1}{T} \int_0^T x^2(t) dt}$$

$$\text{Average Level} = \frac{1}{T} \int_0^T |x| dt$$

peak rasion rms



Aalto University Vibration Course 9-10.5.2023 / K.Saine



30

Quantifying the vibration level

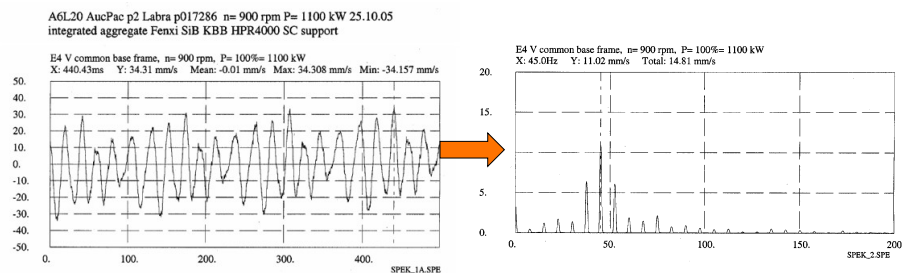
The vibration amplitude can be quantified in a number of ways: peak-peak level, the peak level, the average level, the **RMS** (root mean square) level.

The **PEAK** values indicate only the maximum level, no account is taken of the time history of the wave.

The **AVERAGE** value does take the time history of the wave into account, but has no direct relationship with any useful physical quantity.

The **RMS** value is the most relevant measure of amplitude because it both takes the time history of the wave into account and gives an amplitude value which is directly related to the energy content, and therefore the destructive potential of the vibration.

Time signal versus frequency analysis



- Measured time signal doesn't give very much useful information or it is very difficult to study. After Fourier transformation better knowns FFT you will get spectrum which tells frequency and amplitude of the measured structure (time signal).

Fourier analysis

A Frenchman Jean-Baptiste Joseph Fourier developed Fourier analysis year 1807 during examining heat contractility of a solid structure.

At first he developed theory of Fourier series which he later expanded to Fourier integral.

Fourier transform gives the mathematical connection between time and frequency, and vice versa, and given a time signal allows calculation of the spectrum.

Today we are calling these mathematic tools as **FOURIER ANALYSIS** by the inventor.

The **FAST FOURIER TRANSFORM (FFT, 1967)** is merely an efficient means of calculating a Discrete Fourier Transform (DFT). FFT analyzers are widely used in analysis of vibration.

Time domain and frequency domain

Fourier Transform gives the mathematical connection between time and frequency and vice versa. Any periodic curve, no matter how complex, may be looked upon as a combination of a number of pure sinusoidal curves with harmonically related frequencies.

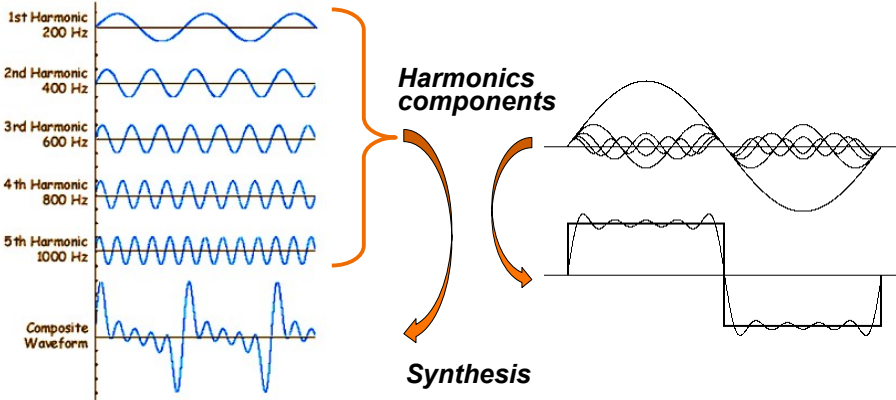
$$F(t) = X_0 + X_1 \cdot \sin(\omega \cdot t) + X_2 \cdot \sin(2 \cdot \omega \cdot t) \dots + X_n \cdot \sin(n \cdot \omega \cdot t) \\ + Y_1 \cdot \cos(\omega \cdot t) + Y_2 \cdot \cos(2 \cdot \omega \cdot t) + \dots + Y_n \cdot \cos(n \cdot \omega \cdot t)$$

or

$$F(t) = X_0 + \sum_{n=1}^{\infty} (X_n \cdot \sin(n \cdot \omega \cdot t) + Y_n \cos(n \cdot \omega \cdot t))$$

Time domain and frequency domain

•Harmonics?

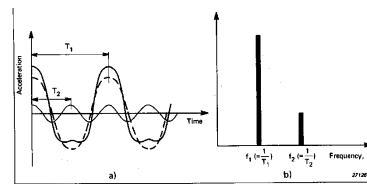
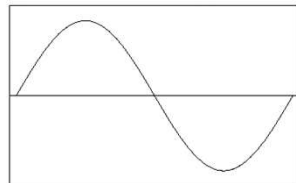
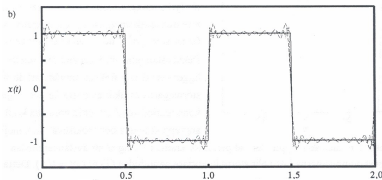
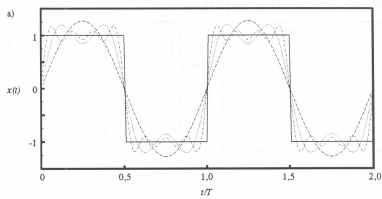


Aalto University Vibration Course 9-10.5.2023 / K.Saine



35

Fourier analysis



Square wave

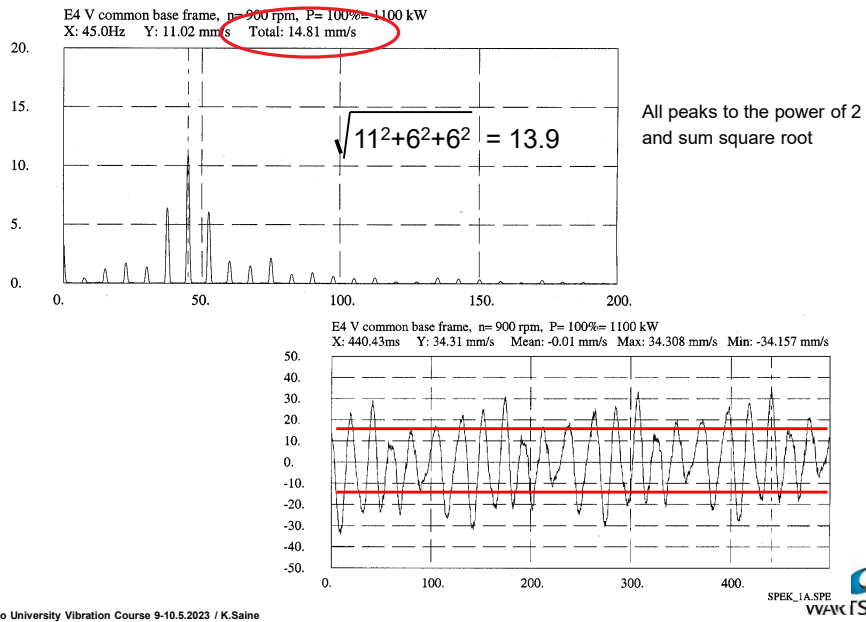


Aalto University Vibration Course 9-10.5.2023 / K.Saine



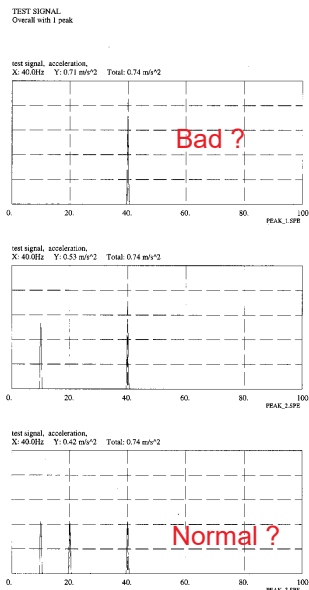
36

Spectrum versus overall level



37

Overall vibration levels



$$\text{Total RMS} = \sqrt{\sum_{i=1}^n X_i^2}$$

The influence of the peaks and overall vibration levels.

The overall levels same, but three different states



38

Time domain

Calculation of four different time signals, where amplitudes and frequencies are constant, only phases are changing.

$$F(t) = \sum_{n=1}^3 X_n \cdot \sin(\omega_n \cdot t + \varphi_n)$$

where ω = angular frequency
 t = time
 φ = phase

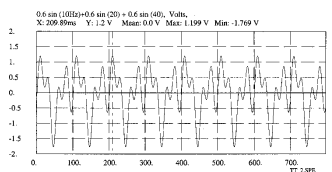
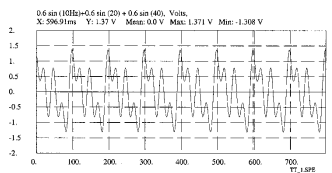
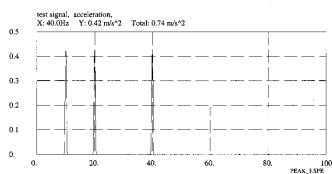
$\omega_1 = 10 \text{ Hz}$, $\omega_2 = 20 \text{ Hz}$, $\omega_3 = 40 \text{ Hz}$, $X_{1,2,3}(\text{peak}) = 0.6 \text{ V}$

| | ω_1 | ω_2 | ω_3 |
|----|------------|------------|------------|
| 1) | 0 | 0 | 0 |
| 2) | -90 | -45 | 0 |
| 3) | -180 | -35 | 90 |
| 4) | -145 | -60 | 0 |

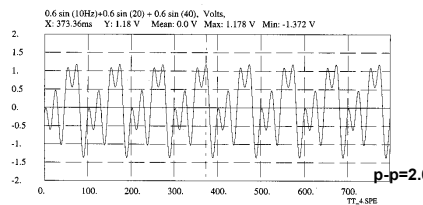
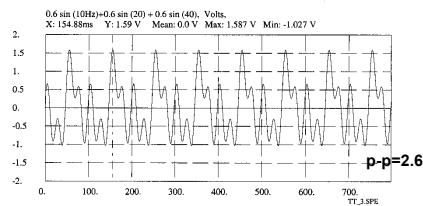
$$\text{Total RMS} = \sqrt{\sum_{n=1}^3 X_n^2}$$

Time signal versus spectrum

TEST SIGNAL
Overall with 3 peaks



TEST SIGNAL - TIME

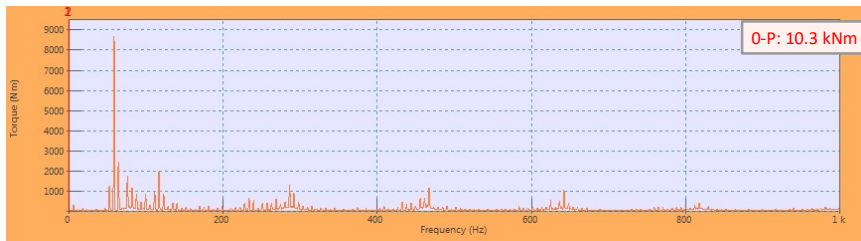
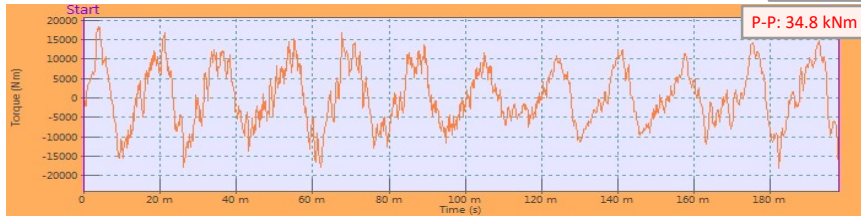


W20V32F camshaft

Installation: PPW20V32F Engine
Engine no: PAAE234059
Engine Type: W20V32F

Torsional Vibration Time signal & FFT
Cam shaft torque at 700 rpm at 100% load 9200kW

A-Bank



Torque measurement for W20V32F on A-bank

Aalto University Vibration Course 9-10.5.2023 / K.Saine



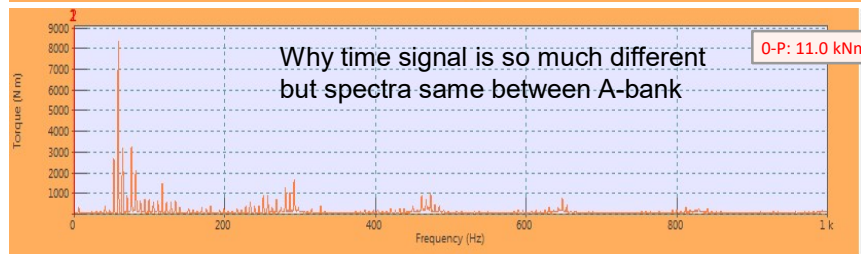
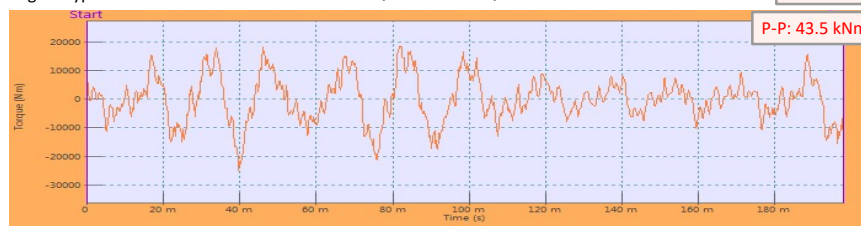
41

W20V32F cmashaft

Installation: PPW20V32F Engine
Engine no: PAAE234059
Engine Type: W20V32F

Torsional Vibration Time signal & FFT
Cam shaft torque at 700 rpm at 100% load 9200kW

B-Bank



Torque measurement for W20V32F on B-bank.

Aalto University Vibration Course 9-10.5.2023 / K.Saine



42

Wärtsilä Vibration Standard

Aalto University Vibration Course 9-10.5.2023 / K.Saine



43

Measurements

Frequency bands and measurement units

- All components are measured in rms velocity units (mm/s) using frequency band 0 – 200 (300) Hz.
- Turbochargers are measured also in rms acceleration units (m/s^2) using frequency band up to the speed of the turbocharger (400 – 1000 Hz).
- For the electrical components velocity spectra up to 200 Hz and acceleration spectra up to 1 kHz

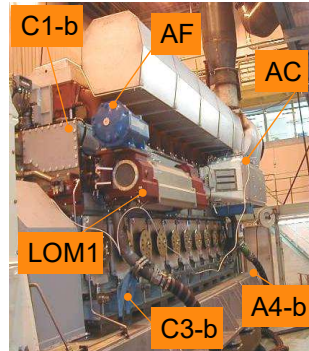
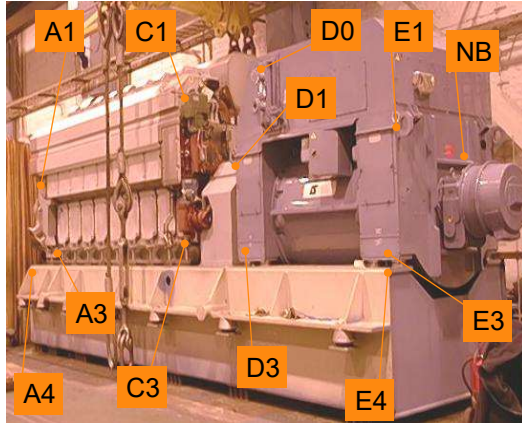
[Measurement video](#)

Aalto University Vibration Course 9-10.5.2023 / K.Saine



44

Vibration measurement points for W32



Aalto University Vibration Course 9-10.5.2023 / K.Saine



45

Abbreviations

The measurement points will be formed by words' initial letters, like

| | | | |
|-----|--------------------------|------|----------------------|
| TCC | TC compressor | TCT | TC turbine |
| TCF | TC filter | TCS | TC suction branch |
| TF | turbo feet | TBR | turbo bracket |
| ACH | air cooler housing | CAC | charge air cooler |
| LOM | lube oil module | AF | automatic filter |
| CF | centrifugal filter | Wecs | wecs |
| GP | gauge (instrument) panel | PLP | pre lubricating pump |
| CH | cylinder head | IP | injection pump |
| WG | waste gate | | |

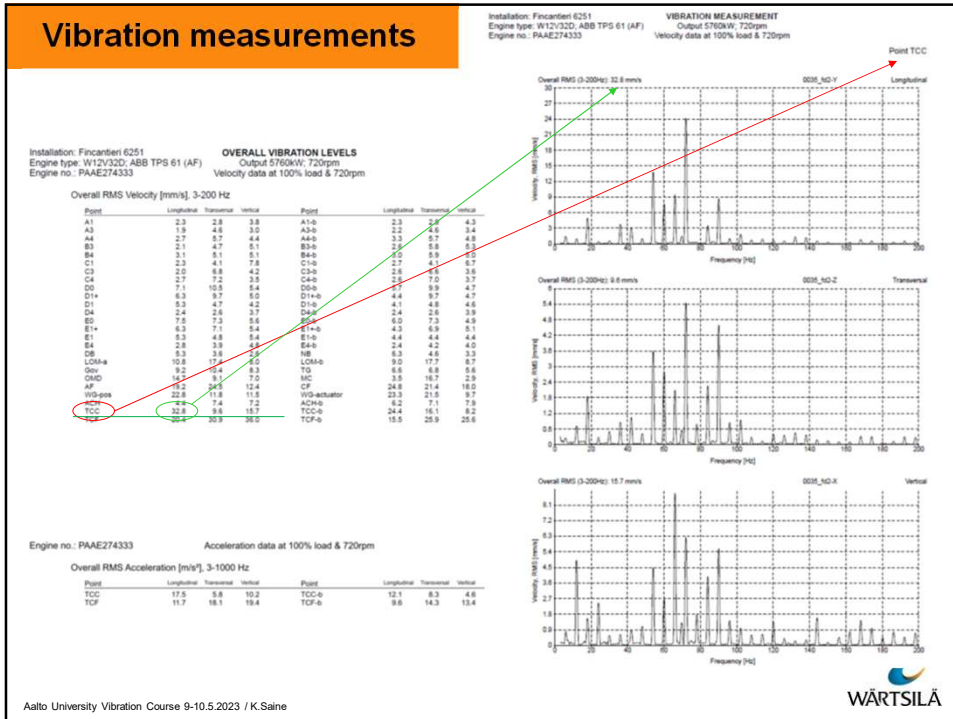
WG-P means Waste Gate Actuator

PLP-C means Pre Lubricating Pump Control valve

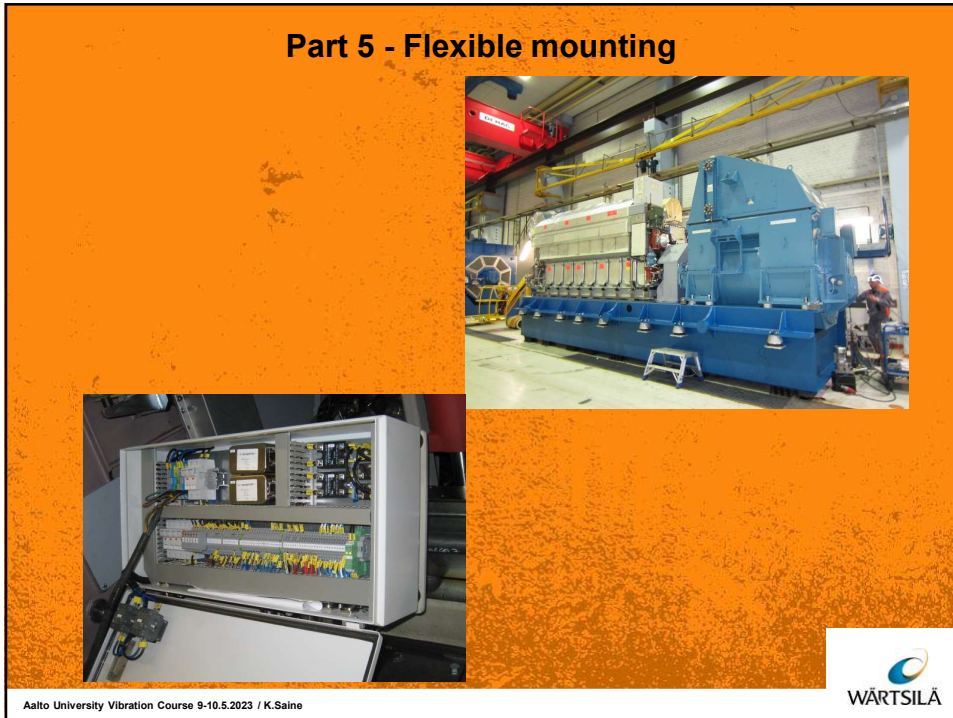
Aalto University Vibration Course 9-10.5.2023 / K.Saine



46



47



48

Why flexible mounting

The electrical box mounted on large diesel engine contains many sophisticated components.

Excitations from engine have many strong frequency components that may destroy the electric box.

Hence it must be isolated from the engine excitations.

it is very important to select the right isolator for an application.

Main cabinet in resonance



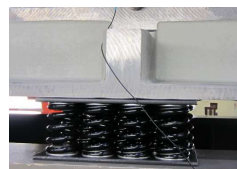
Aalto University Vibration Course 9-10.5.2023 / K.Saine



49

Flexible mounted aggregate or main engine

- The purpose of flexible elements either steel springs or rubber elements is to minimize the energy transmissions from engine to surrounding but ALSO vice versus (earthquake).
- This means that the ground can be desinged according to statical load.
- It is very important that all the outcoming pipelines have installed with flexible elements



Aalto University Vibration Course 9-10.5.2023 / K.Saine



50

Vibration Isolation

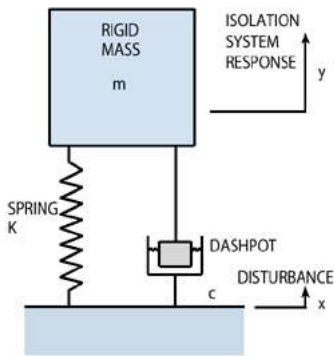
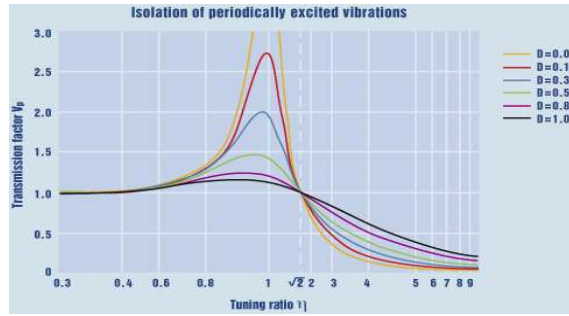


FIGURE 42.1
Typical Isolator Represented as a Mass, Spring and Dashpot



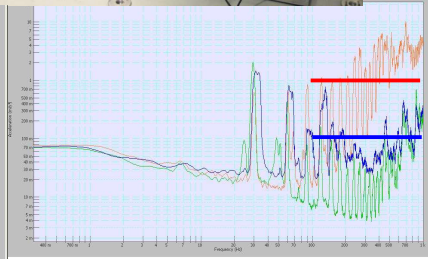
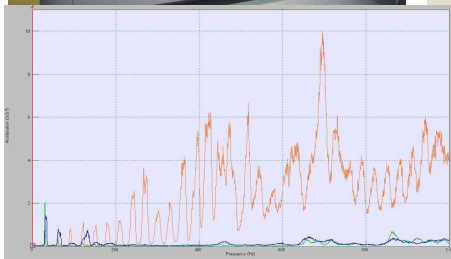
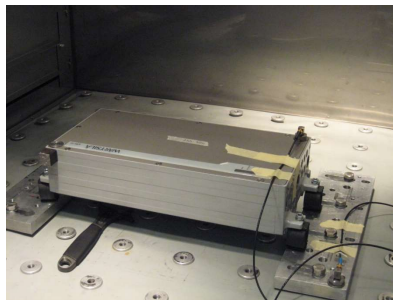
Tuning ratio = Excitation Freq/ Natural Freq

Transmission Factor = Amplitude of mass/ Amplitude of frame

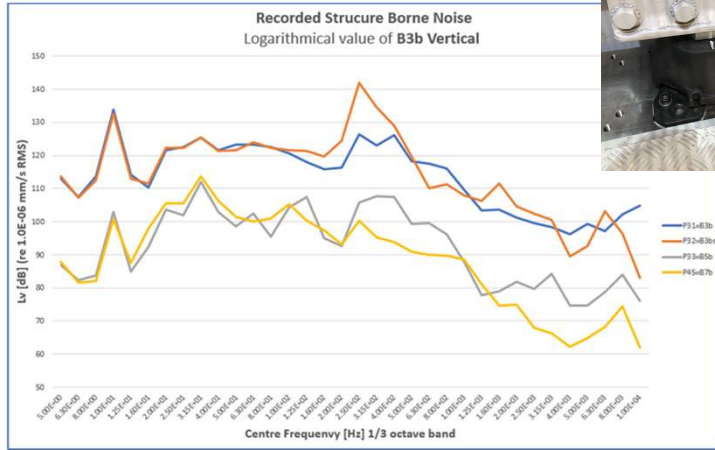
$$\text{Natural Frequency} = \sqrt{\frac{k}{m}}$$

Isolation Parameters = Stiffness of isolator, mass of box, engine excitation and damping

Flexible mounting – Halt test



Structure Borne Noise

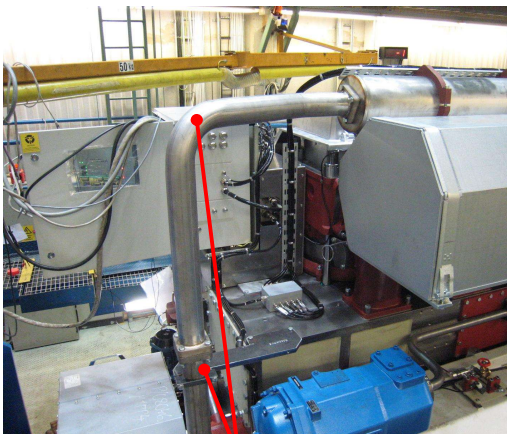


Aalto University Vibration Course 9-10.5.2023 / K.Saine



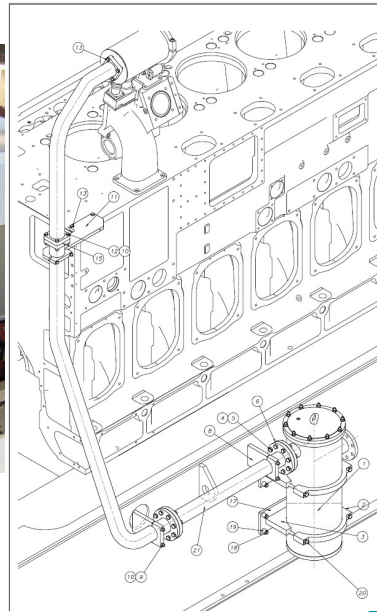
53

Gas pipe



Measurement points

Vibration spectra

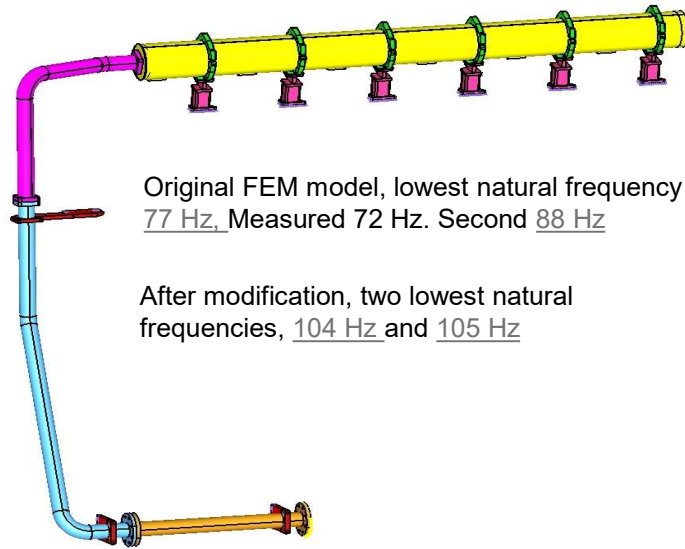


Aalto University Vibration Course 9-10.5.2023 / K.Saine



54

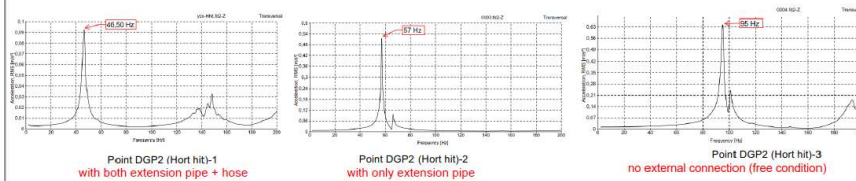
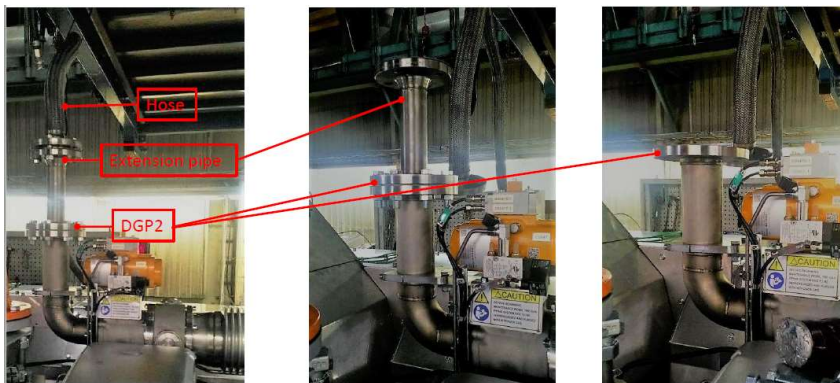
Gas pipe - FEM



Original FEM model, lowest natural frequency 77 Hz, Measured 72 Hz. Second 88 Hz

After modification, two lowest natural frequencies, 104 Hz and 105 Hz

De-gassing pipe – influence of extra mass (pieces)



Influence 10 Hz

Influence of 8 kg from 57 Hz to 95 Hz

Standards

- ISO 6954 Mechanical vibration-Guidelines for measurement, reporting ...
- ISO 8528-9 Reciprocating internal combustion engine driven alternating generating set
- ISO 10816-6 Mechanical vibration-Evaluation of machine vibration by measurements of nonrotating parts
- ISO 1940-1 Mechanical vibration-Balance quality requirements for rotors ...
- ISO 11342 Mechanical vibration-Methods and criteria for the mechanical balancing of flexible rotors

- IEC 60068-2-6 Environment testing: Vibration
- IEC 60068-2-27 Environment testing: Shock
- IEC 60068-2-64 Environment testing: Vibration, broadband random and guidance

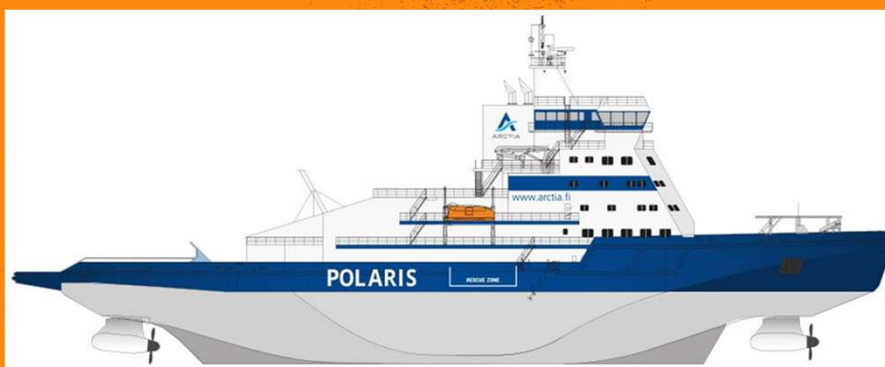
- etc.

Aalto University Vibration Course 9-10.5.2023 / K.Saine



57

Vibration at ships

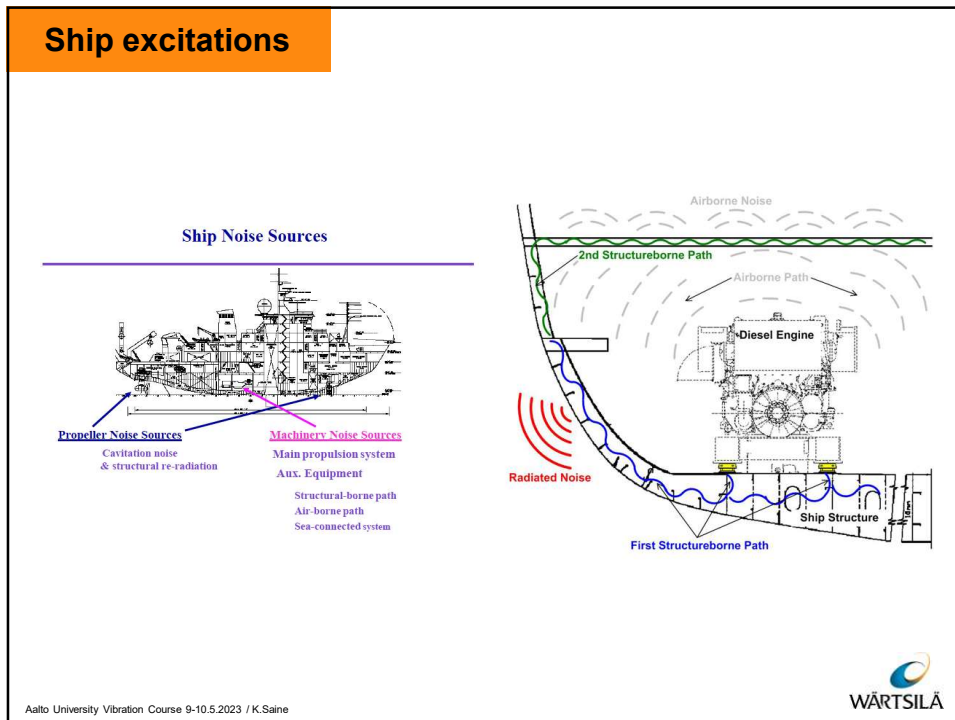


Aalto University Vibration Course 9-10.5.2023 / K.Saine



58

Ship excitations

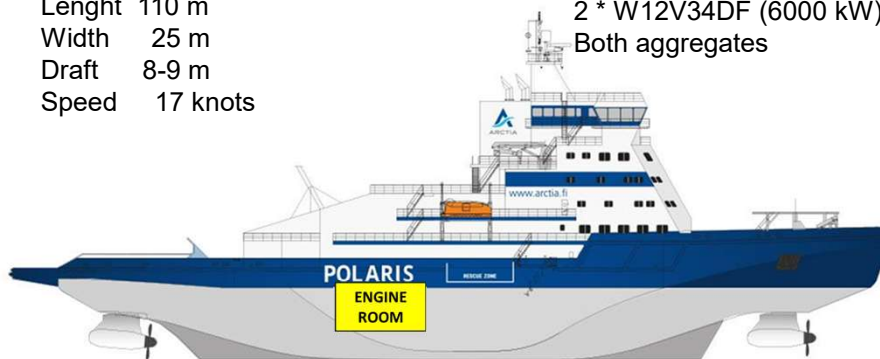


59

Icebreaker Polaris

Length 110 m
Width 25 m
Draft 8-9 m
Speed 17 knots

2 * W9L34DF (4500 kW)
2 * W12V34DF (6000 kW)
Both aggregates



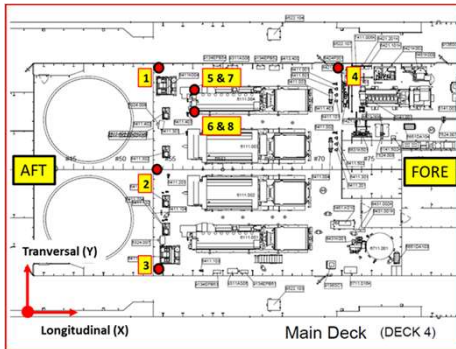
Vibration measurements during winter time to clarify how engines will behave in ice conditions, what will be acceleration levels of ship hull.

Aalto University Vibration Course 9-10.5.2023 / K.Saine

WÄRTSILÄ

60

Icebreaker Polarıs



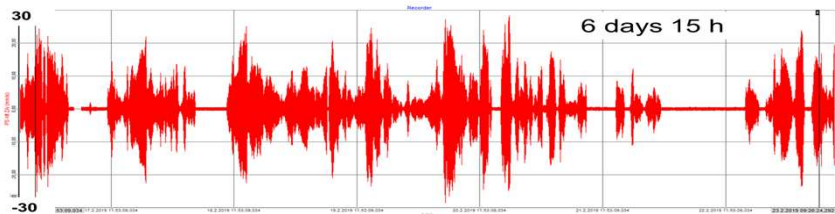
- Vibration measurements were carried out during winter time, from February to May 2019 at Bay of Bothnian. The purpose was clarified what is happend during icebreaking. 8 pieces 3D-accelerometers were used, 4 in ship frames and 4 on aggregates.

Aalto University Vibration Course 9-10.5.2023 / K.Saine

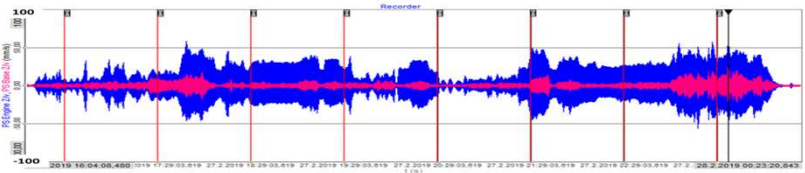


61

Icebreaker Polarıs



- Long-term measurements during icebreaking. Very high vibartion levels could be measured both on ship hull and on aggregates.
- Normal vibartion levels outside icebreaking.



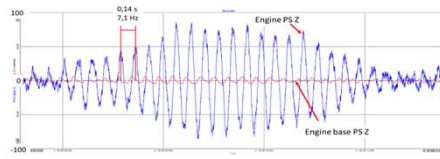
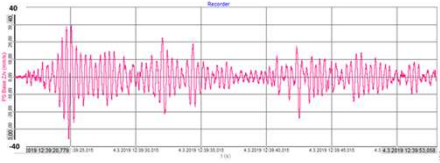
- Icebreaking 27.2.2019 16:00 – 28.2.2019 00:20
- Red curve Base Z (Mp 5)
- Blue curve Engine Vertical Z (Mp 7)

Aalto University Vibration Course 9-10.5.2023 / K.Saine



62

Icebreaker Polarix



- On ship hull could be found following natural frequencies
- 2.8 Hz 30 mm/s=2.8 mm
- 5.6 Hz
- 8.2 Hz
- 7.1 Hz 7 mm/s=0.16 mm
- This 7.1 Hz frequency is very close to rigid body natural frequency of aggregate and that is why whole aggregate is jumping with amplitude 70 mm/s=1.6 mm

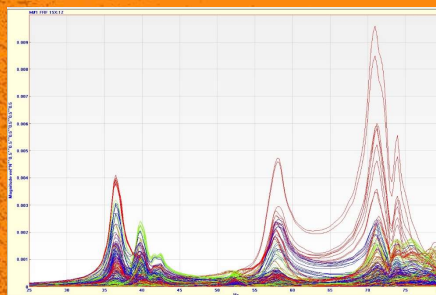
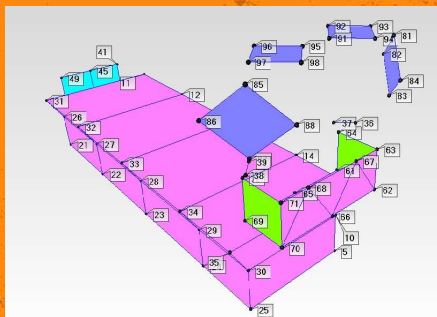
Aalto University Vibration Course 9-10.5.2023 / K.Saine



63

Advanced Vibration Course

Part 2 - Natural frequencies



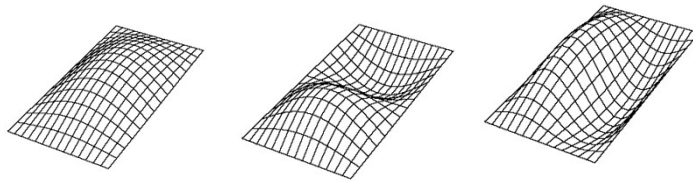
Aalto University Vibration Course 9-10.5.2023 / K.Saine



64

Natural frequency

- At different natural frequencies system oscillates in different shape that is called the mode shape or mode of vibration. Modes are inherent properties of structure. They don't depend on the force or loads acting on the structure. Modes will change only if material properties (mass, stiffness, damping properties) or boundary condition (mounting) of the structure change. The most well-known natural frequencies correspond to the first bending and torsion mode shapes.

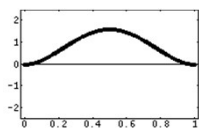


Aalto University Vibration Course 9-10.5.2023 / K.Saine

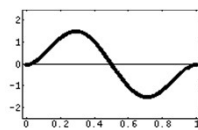


65

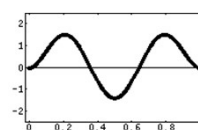
Natural frequencies and shapes



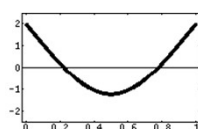
1st bending



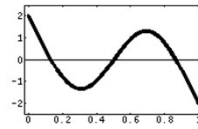
2nd bending



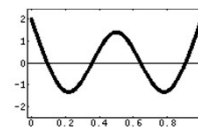
3rd bending



Plates



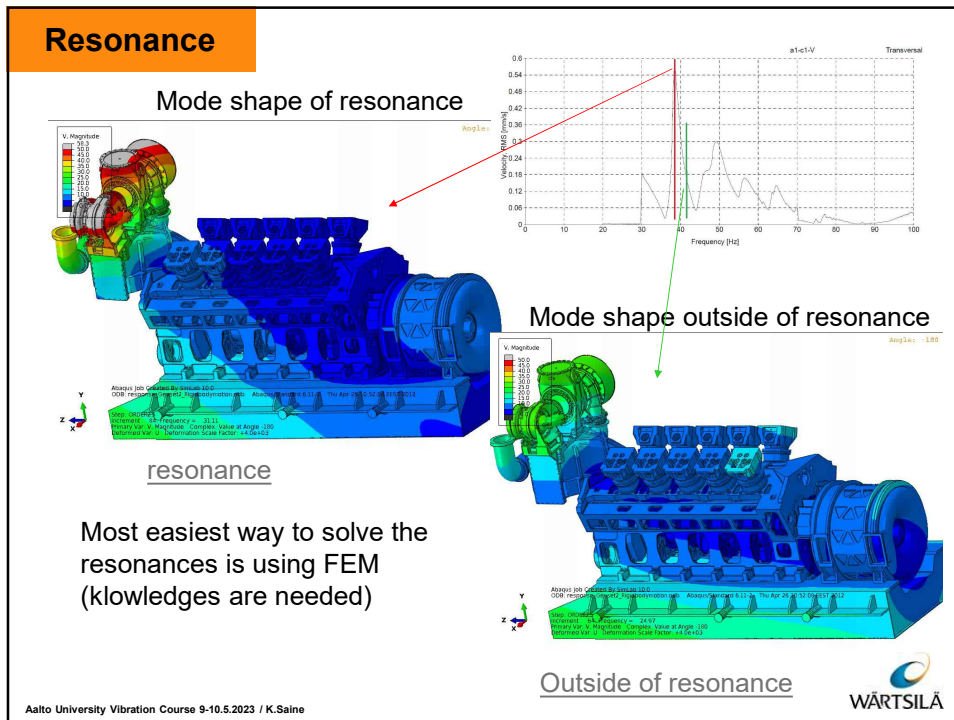
Mode shapes



Aalto University Vibration Course 9-10.5.2023 / K.Saine



66



67

The mode shapes of the natural frequencies

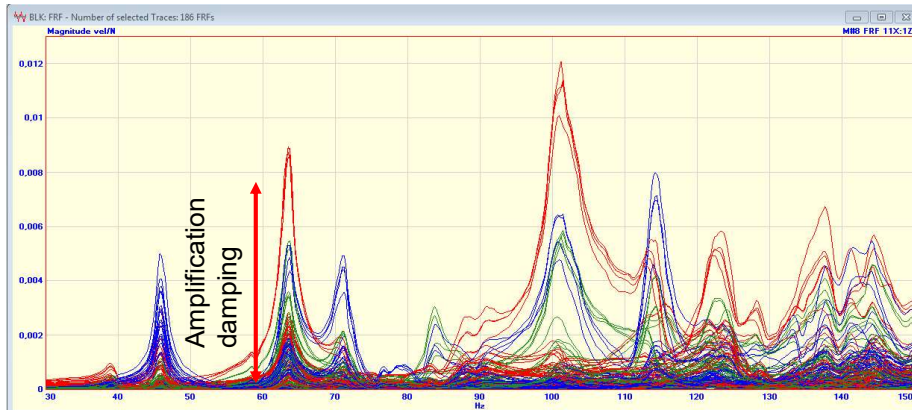
| <u>Rigid body frequencies</u> | <u>Elastic natural frequencies</u> |
|--|--|
| <p>Longitudinal, transversal, vertical Pitching, yawing, rolling</p> | <p>1st torsio 1st bending 1st horizontal bending 2nd ...</p> |

- All real structures have multiple natural frequencies. Modes or resonances are inherent properties of a structure. Modes are determined by the material properties (mass, stiffness, and damping properties), and boundary conditions of the structure. The amplitudes at resonances are mainly depending on damping values of the structure (multi body structures)
- Modes are further characterized as either **rigid body** or **flexible body** modes. All flexible mounted structures have up to **six rigid body** modes, three translational modes and three rotational modes. The structure moves as a rigid body, no deformation.

Aalto University Vibration Course 9-10.5.2023 / K.Saine WÄRTSILÄ

68

FRF natural frequencies



- **FRF (Frequency Response Function)** is a characteristic of a system that has a measured **response** resulting from a known applied input, every peaks means the natural frequencies of the structures of different components; local or global

Aalto University Vibration Course 9-10.5.2023 / K.Saine



69

Part 3 - Measurements



Aalto University Vibration Course 9-10.5.2023 / K.Saine



70

Measurements

- Standard linear vibration measurements
- Sweeping measurements (3D or water fall measurements = change the engine speed)
- ODS (Operational Deflection Shape = how the structure is moving)
- Hydraulic shaker measurements with random or sinusoidal excitation (natural frequencies of the structure)
- Modal (Hammer) measurements
- Shaker table measurements
- Weighing engine and gravity point
- Stress measurements

Aalto University Vibration Course 9-10.5.2023 / K.Saine



71

Measurements

- Standard vibration measurements 5.20
- Laser measurements 2.30
- Shaker table measurements 3.20
- Shock test 2.45
- Hydraulic shaker measurements 5.40
- Weighing 2.05
- Rigid body measurements
- Stress measurements 7.10
- Earthquake test 1.00

Aalto University Vibration Course 9-10.5.2023 / K.Saine



72

Vibration measurements

Installation: Fincantieri 6251
 Engine type: W12V32D, ABB TPG 61 (AF)
 Engine no.: PAAE274333

OVERALL VIBRATION LEVELS

Velocity data at 100% load & 720rpm

Overall RMS Velocity [mm/s], 3-200 Hz

| Point | Longitudinal | Transverse | Vertical | Point | Longitudinal | Transverse | Vertical |
|--------|--------------|------------|----------|-------------|--------------|------------|----------|
| A1 | 2.3 | 2.8 | 3.8 | A1-a | 2.3 | 2.8 | 4.3 |
| A3 | 1.9 | 4.6 | 3.0 | A3-a | 2.2 | 4.6 | 3.4 |
| A4 | 2.7 | 5.7 | 4.4 | A4-a | 3.3 | 5.7 | 4.8 |
| B3 | 2.1 | 4.7 | 5.1 | B3-a | 2.6 | 5.8 | 6.3 |
| B4 | 3.1 | 5.1 | 5.1 | B4-a | 3.0 | 5.9 | 6.0 |
| C1 | 2.0 | 4.1 | 7.8 | C1-a | 2.7 | 4.1 | 6.7 |
| C3 | 2.0 | 5.8 | 4.2 | C3-a | 2.6 | 6.6 | 3.6 |
| C4 | 2.7 | 3.2 | 3.5 | C4-a | 2.8 | 7.0 | 3.7 |
| D0 | 17.1 | 10.0 | 5.4 | D0-a | 5.7 | 9.9 | 4.7 |
| D1+ | 6.3 | 9.7 | 5.0 | D1+a | 4.4 | 9.7 | 4.7 |
| D1 | 5.3 | 6.7 | 4.2 | D1-a | 4.1 | 4.8 | 4.6 |
| D4 | 2.4 | 2.6 | 3.7 | D4-a | 2.4 | 2.6 | 3.9 |
| D5 | 7.5 | 7.3 | 5.6 | D5-a | 6.0 | 7.3 | 4.9 |
| E1+ | 6.3 | 7.1 | 5.4 | E1+a | 4.3 | 6.9 | 5.1 |
| E1 | 5.3 | 4.8 | 5.4 | E1-a | 4.4 | 4.4 | 4.4 |
| E4 | 2.8 | 3.9 | 4.8 | E4-a | 2.4 | 4.2 | 4.0 |
| D8 | 9.3 | 3.9 | 2.6 | D8 | 6.3 | 4.6 | 3.3 |
| LCM-a | 10.8 | 17.4 | 5.0 | LCM-a | 9.0 | 17.7 | 8.7 |
| OP | 9.2 | 10.4 | 8.3 | TO | 6.6 | 6.6 | 5.6 |
| OMD | 14.7 | 9.1 | 7.0 | MC | 3.8 | 16.7 | 2.9 |
| WV | 19.2 | 24.8 | 12.4 | CF | 24.8 | 21.4 | 16.0 |
| WV-pos | 22.8 | 11.8 | 11.8 | WV-actuator | 23.3 | 21.9 | 9.7 |
| ACH | 4.4 | 3.4 | 7.2 | ACH-a | 6.2 | 7.1 | 3.9 |
| TCC | 32.8 | 9.8 | 15.7 | TCC-a | 24.4 | 16.1 | 6.2 |
| TCF | 20.4 | 30.9 | 36.0 | TCF-a | 15.5 | 25.9 | 25.6 |

Engine no.: PAAE274333

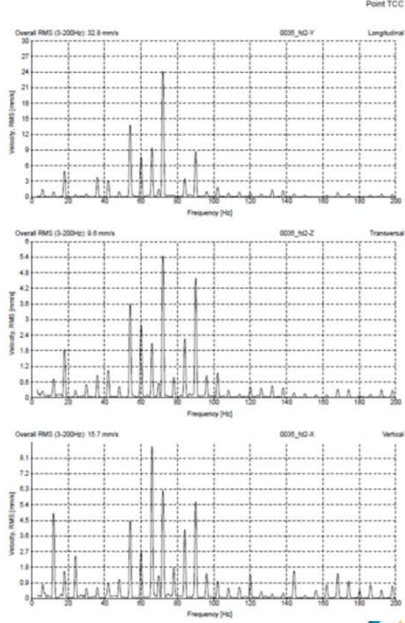
Acceleration data at 100% load & 720rpm

Overall RMS Acceleration [m/s²], 3-1000 Hz

| Point | Longitudinal | Transverse | Vertical | Point | Longitudinal | Transverse | Vertical |
|-------|--------------|------------|----------|-------|--------------|------------|----------|
| TCC | 11.2 | 9.8 | 19.2 | TCC-a | 13.1 | 8.3 | 4.8 |
| TCF | 11.7 | 18.1 | 19.4 | TCF-a | 9.6 | 14.3 | 13.4 |

Aalto University Vibration Course 9-10.5.2023 / K.Saine

VIBRATION MEASUREMENT
 Output 5760kW, 720rpm
 Velocity data at 100% load & 720rpm



73

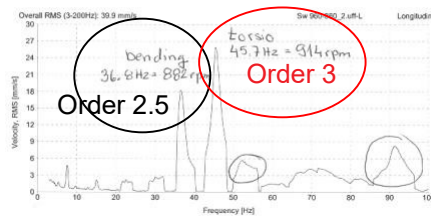
Sweeping measurements

Installation: MV Resolution (re-eng)
 Engine type: W6L20
 Engine no.: PAAE092554

VIBRATION MEASUREMENT
 P=1110kW 900rpm =100%
 Sweeps 950-960rpm P=1110kW

Appendix 1 12

Point D1 Sweep



The sweeping measurements, where the engine speed will change, are carried out normally with constant output.

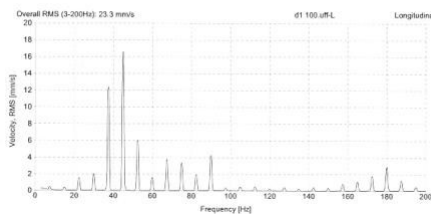
The results show the location of the natural frequencies and their's amplitudes (safety margin)

Installation: MV Resolution (re-eng)
 Engine type: W6L20
 Engine no.: PAAE092554

VIBRATION MEASUREMENT
 P=1110kW 900rpm =100%
 Sweeps 950-960rpm P=1110kW

Appendix 1

Point D1 100%

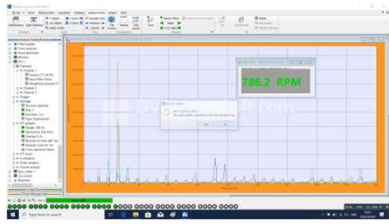


Aalto University Vibration Course 9-10.5.2023 / K.Saine

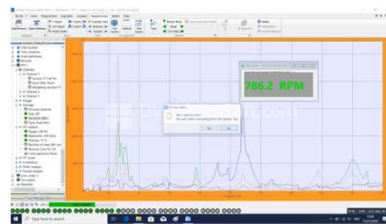


74

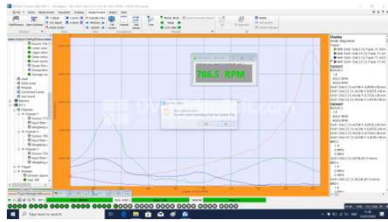
Sweeping measurements



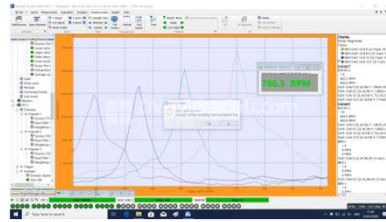
Sweeping n= 600->800 rpm with exp average



Sweeping n= 600->800 rpm with peak hold



Order tracking n= 600->800 rpm



Order tracking n= 600->800 rpm

Aalto University Vibration Course 9-10.5.2023 / K.Saine



75

Sweeping measurements

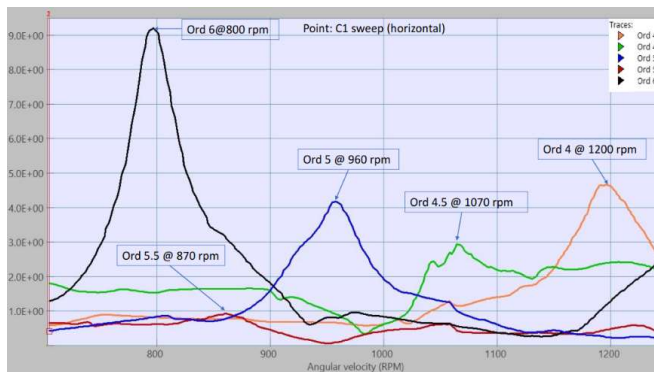


Fig 3:(left) Order tracking result for point C1-T

- W9L20 engine block torsion is located at 80 Hz
- With speed from 700 rpm to 1280 rpm different orders will pass this torsion. Order 6 at speed 600 rpm, order 5 (960 rpm), order 4.5 (1070 rpm) firing frequency and order 4 (1200 rpm)

Aalto University Vibration Course 9-10.5.2023 / K.Saine



76

Influence of low damping

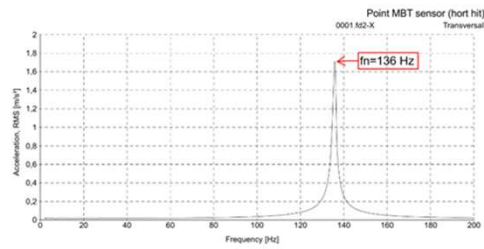
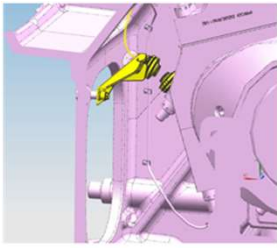
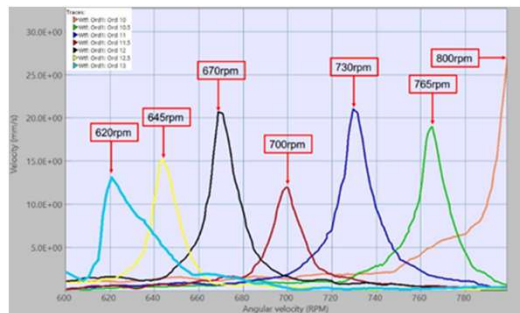


Fig 5: W20V34DF, MBT sensor (left) location drawing (right) modal result for MBT sensor bracket at cylinder A4

MBT sensor and higher excitation orders, sweep 600 -> 800 rpm

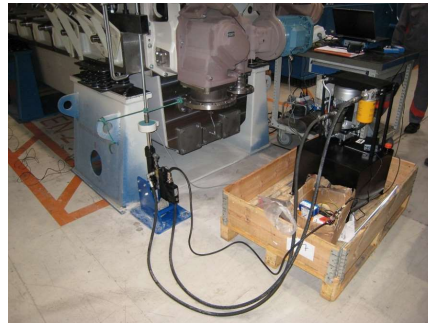


Aalto University Vibration Course 9-10.5.2023 / K.Saine

WÄRTSILÄ

77

Hydraulic shaker measurements



- With hydraulic shaker measurements could be created high random or sinusoidal force from 10 Hz up to 200 Hz.
- Structure is isolated from ground with flexible elements
- The force is measured with force transducer.
- This measurement system is quite easy to perform here in Vaasa
- Normally is used 60-120 measurement points from the structure.

Aalto University Vibration Course 9-10.5.2023 / K.Saine

WÄRTSILÄ

78

Hydraulic shaker measurements

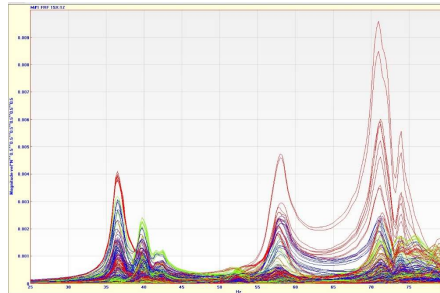
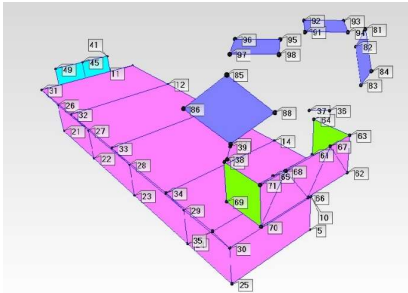


Aalto University Vibration Course 9-10.5.2023 / K.Saine



79

Hydraulic shaker measurements



- **FRF (Frequency Response Function)** is a characteristic of a system that has a measured **response** resulting from a known applied input, means the natural frequencies of the structures of different components
- Mode shapes of the natural frequencies will tell the movements of the structure. It is very important to understand how different part moves each other.
- That is why it is very important to have as many points as possible. Normally is used 60-140 measurement points.

Aalto University Vibration Course 9-10.5.2023 / K.Saine



80

Mode shapes

- [Turbo bracket 39 Hz with AFS](#)
- [Turbo bracket 39 Hz WITHOUT AFS](#)
- [Engine block 50 Hz torsion](#)
- [LOM 64 Hz vertical](#)

Aalto University Vibration Course 9-10.5.2023 / K.Saine



81

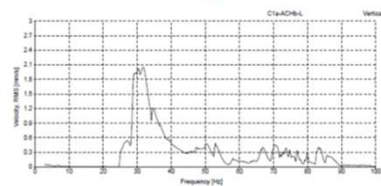
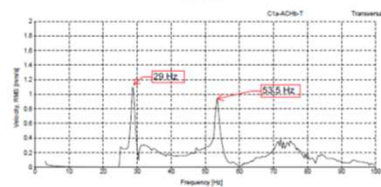
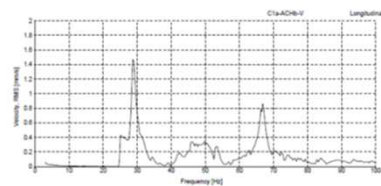
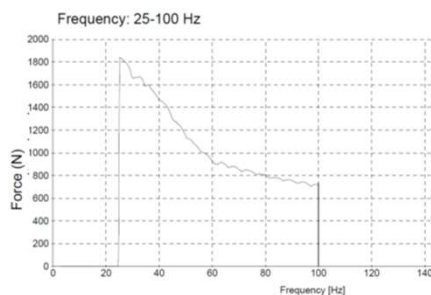
Hydraulic sweep measurements

Installation: Fincantieri 6251
Engine type: W12V32D, ABB TPS 61 (AF)
Engine no.: PAAE274332

VIBRATION MEASUREMENT
Output 5760kW; 720rpm
Shaker sweep data 25 Hz to 100 Hz

VIBRATION MEASUREMENT
Output 5760kW; 720rpm
Shaker sweep data 25 Hz to 100 Hz

Point C1a



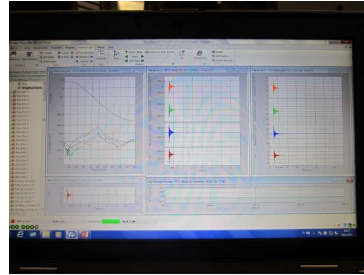
- In resonance situations the amplitude of whole aggregate could be as high as 10 to 20 mm/s with force 1000 N.
- With known sinusoid excitations could be improved our FEM models.

Aalto University Vibration Course 9-10.5.2023 / K.Saine



82

Modal measurement with hammer



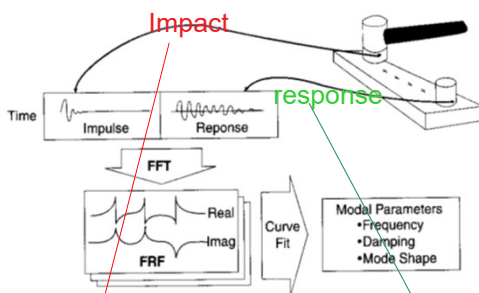
- + fast
- weak excitation

Aalto University Vibration Course 9-10.5.2023 / K.Saine

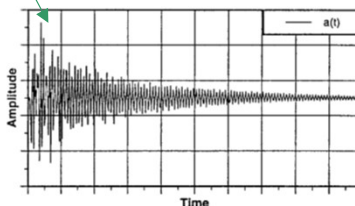
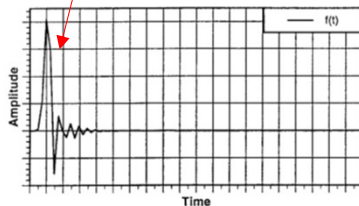


83

Modal measurements



The modal (impact) testing was developed during the late 1970's, and has become the most popular modal testing method used today. The modal testing is a fast, convenient, and low cost way of finding the modes of machines and structures.

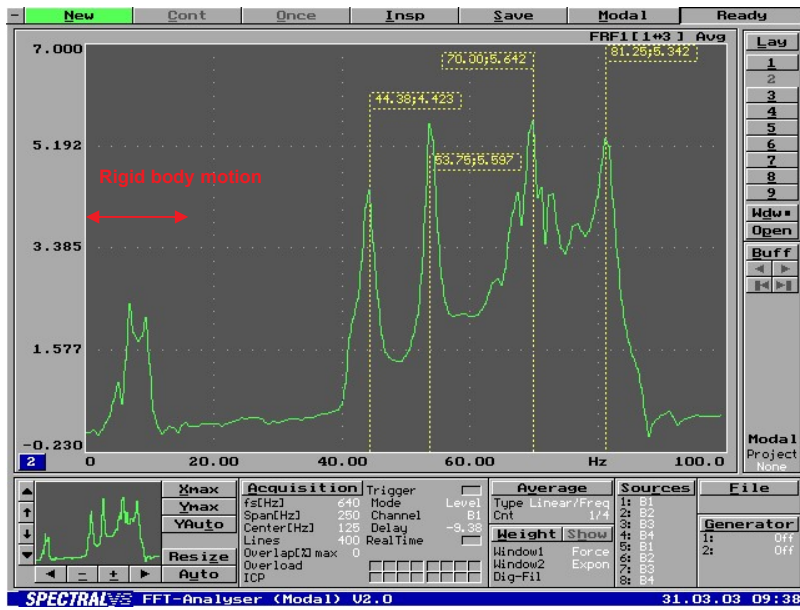


Aalto University Vibration Course 9-10.5.2023 / K.Saine



84

Frequency Response Function



Aalto University Vibration Course 9-10.5.2023 / K.Saine



85

Running conditions Operation Deflection Shape

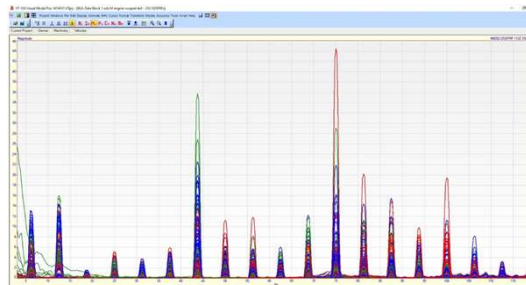
- Normally measurements will carry out with nominal engine speed and full load.
- The ODS movements are relative movements, the amplitudes must be taken from real spectra

• ODS order 0,5 yawing

• ODS order 1 vertical and bending

• ODS order 3 firing frequency TCF

• ODS order 4,5 LOM



Aalto University Vibration Course 9-10.5.2023 / K.Saine

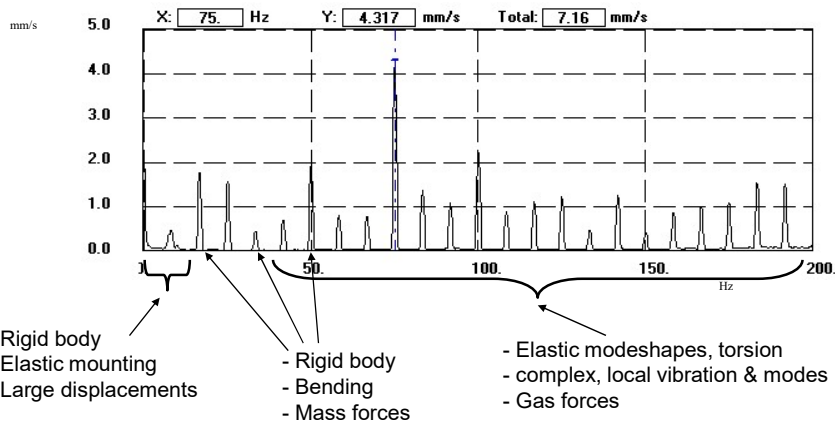


86

Time domain and frequency domain

FREQUENCY DOMAIN

A typical vibration spectrum measured from a diesel engine

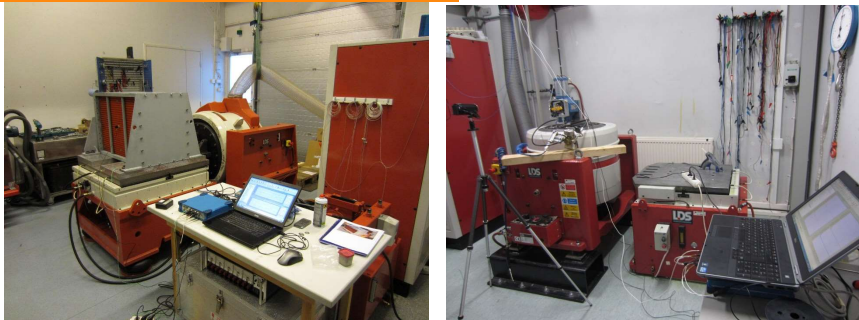


Aalto University Vibration Course 9-10.5.2023 / K.Saine



87

Electrical shaker table test



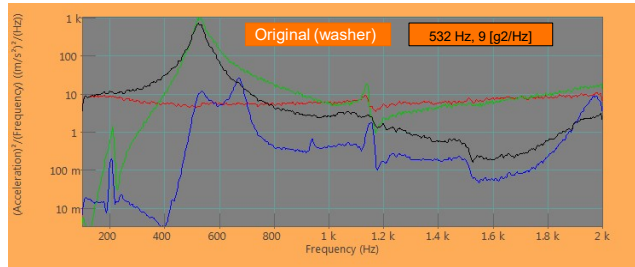
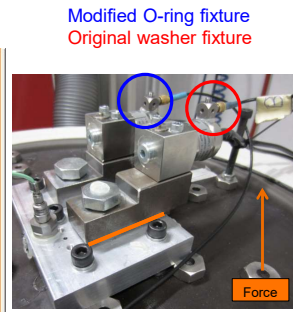
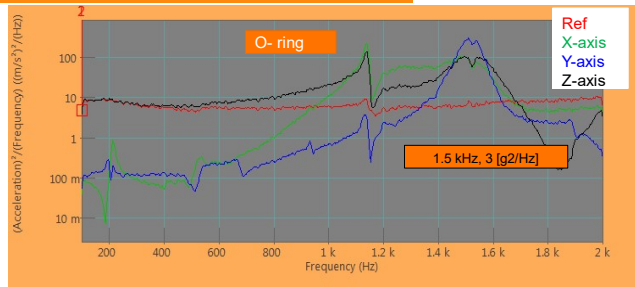
- The reliability of different engine components could be easily tested with an electrical shaker table.
- With a shaker table, different structures can be excited up to 2 kHz with very high excitations.
- The test mass can be as high as 500 kg.
- All new components must be tested according to the Wärtsilä standard.

Aalto University Vibration Course 9-10.5.2023 / K.Saine



88

Electrical shaker table test



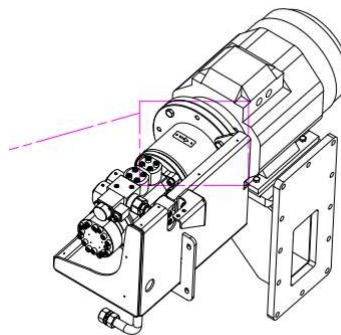
When is used washer the contact area is area of washer. And with O-rings the contact area is whole mounting structure.

Aalto University Vibration Course 9-10.5.2023 / K.Saine



89

Pilot fuel pump



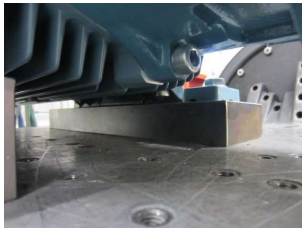
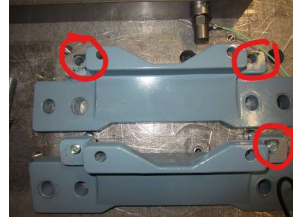
From field was gotten information for broken bolts on el-motor

Aalto University Vibration Course 9-10.5.2023 / K.Saine



90

Electrcal shaker table test



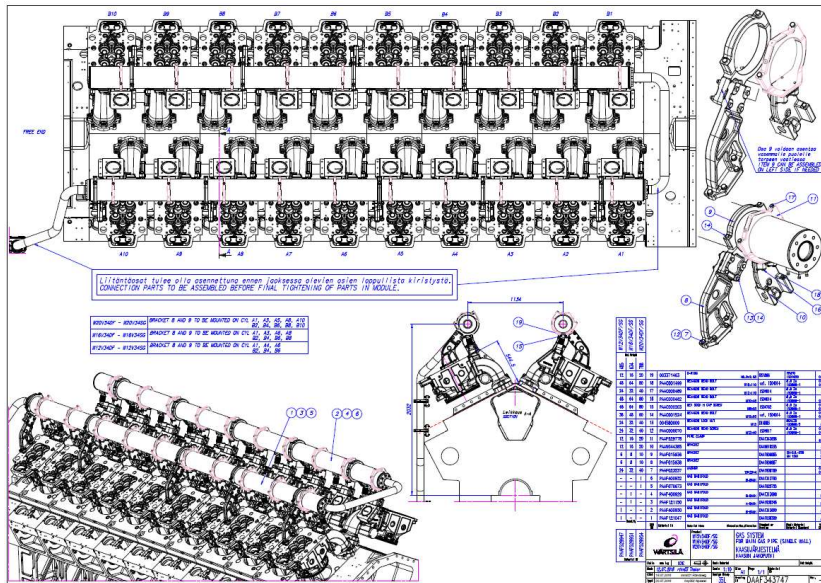
- On field some challanges with broken bolts
- With random excitation these bolts were opened or broken after 2-3 hours

Aalto University Vibration Course 9-10.5.2023 / K.Saine



91

Single wall gas pipe



Aalto University Vibration Course 9-10.5.2023 / K.Saine



92

Single wall gas pipe



- During year 2019 Wärtsilä got claims from cracking single wall gas pipes. Only common was that cracks seem to start on same place, immediately after clamps, different cylinders

Aalto University Vibration Course 9-10.5.2023 / K.Saine



93

Single wall gas pipe

- Low vibration levels were measured around gas pipelines of different engine configurations. Also mode shapes seem to normal. Vibration can't be a reason for cracks.
- FEM calculation showed also that stress levels should be acceptable.
- Many trial and errors were carried out with satisfactory results.
- Finally was decided to do some special tests with W16V34DF engine at Vaasa.

Aalto University Vibration Course 9-10.5.2023 / K.Saine



94

Single wall gas pipe



Overall view from aggregate

Aalto University Vibration Course 9-10.5.2023 / K.Saine



95

Single wall gas pipe



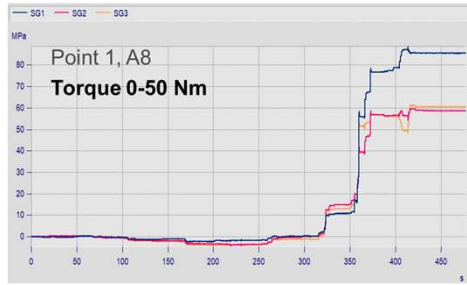
Just before measurements was decided to add strain gages on both side at cylinders A1, A5 and A8

Aalto University Vibration Course 9-10.5.2023 / K.Saine



96

Stress measurements



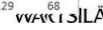
Stress levels on gas pipe with tightening torque

Static surface tension at different torque

| Steel A-bank Torque test | A8 | | | A5 | | | A1 | | |
|--------------------------------|-----|-----|-----|-----|-----|----|----|-----|-----|
| | 1 | 2 | 3 | 1 | 2 | 3 | 1 | 2 | 2 |
| 50 Nm | 85 | 58 | 60 | 54 | 56 | 42 | 38 | 35 | 65 |
| 85 Nm | 113 | 98 | 78 | 67 | 83 | 48 | 42 | 53 | 82 |
| Dev | +28 | +40 | +18 | +27 | +27 | +6 | +4 | +18 | +17 |
| @100% load | 150 | 146 | 108 | 97 | 125 | 93 | 63 | 62 | 97 |

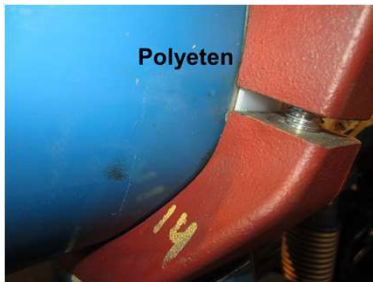
| Steel B-bank Torque test | B8 | | | B5 | | | B1 | | |
|--------------------------------|----|----|----|-----|-----|-----|-----|-----|-----|
| | 1 | 2 | 3 | 1 | 2 | 3 | 1 | 2 | 3 |
| 50 Nm | 27 | 12 | 34 | 80 | 72 | 80 | 42 | 70 | 42 |
| 85 Nm | 31 | 12 | 38 | 115 | 82 | 115 | 73 | 107 | 70 |
| Dev | +4 | - | +4 | +35 | +10 | +35 | +31 | +35 | +28 |
| @100% load | 80 | 75 | 90 | 144 | 135 | 172 | 81 | 129 | 68 |

Aalto University Vibration Course 9-10.5.2023 / K.Saine



97

Stress measurements



Static surface tension between materials using different clamping torque

| Steel B-bank Torque test | B1 | | | NBR-rubber B-bank Torque test | B1 | | |
|--------------------------------|-----|-----|-----|-------------------------------------|-----|-----|---|
| | 1 | 2 | 2 | | 1 | 2 | 3 |
| 50 Nm | 42 | 70 | 42 | 65 | 42 | 56 | |
| 85 Nm | 73 | 107 | 70 | 74 | 70 | 75 | |
| Dev | +31 | +35 | +28 | +9 | +28 | +19 | |

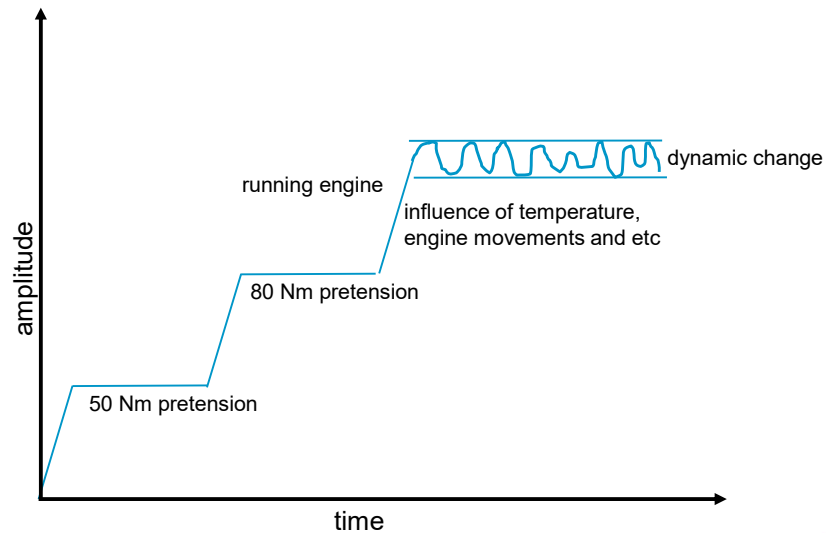
| BA-S, fiber B-bank Torque test | B1 | | | PE, polythene B-bank Torque test | B1 | | |
|--------------------------------------|-----|-----|-----|--|-----|-----|---|
| | 1 | 2 | 3 | | 1 | 2 | 3 |
| 50 Nm | 30 | 45 | 40 | 30 | 45 | 40 | |
| 85 Nm | 45 | 80 | 60 | 45 | 80 | 60 | |
| Dev | +15 | +35 | +20 | +15 | +35 | +20 | |

Aalto University Vibration Course 9-10.5.2023 / K.Saine



98

Static and dynamic amplitudes



Aalto University Vibration Course 9-10.5.2023 / K.Saine



99

Case study – fixing rails of test run

- Very high vibration levels have been measured on rigidly mounted main engines of W8L32 at 50 Hz (firing frequency)
- Why this can be accepted?
- Spectra and mode shape



Aalto University Vibration Course 9-10.5.2023 / K.Saine

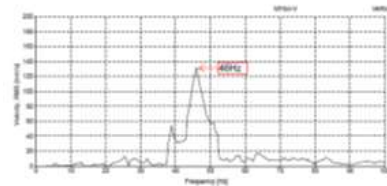
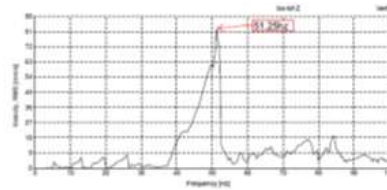


100

Case study – badly supported exhaust pipe after turbo



1



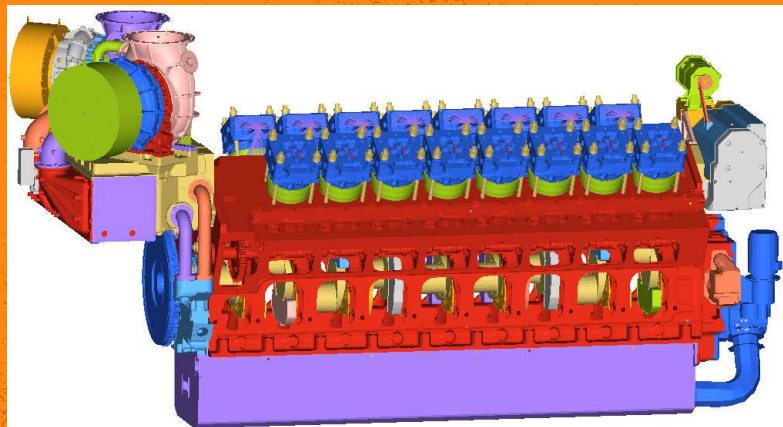
Sweeping spectra on TCF on vertical direction. On top badly support exhaust pipe and below on right way supported exhaust pipe.

Aalto University Vibration Course 9-10.5.2023 / K.Saine



101

Part 6 - Theoretical calculations with FE models

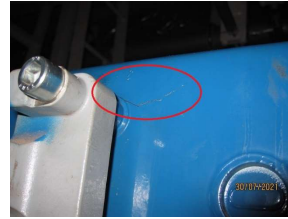


Aalto University Vibration Course 9-10.5.2023 / K.Saine



102

Gas Manifold Pipe



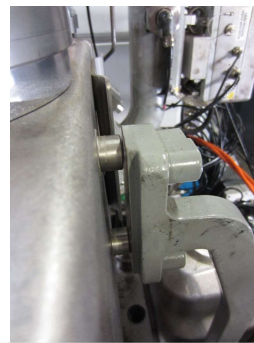
- During year 2021 were reported cracks on W20DF gas manifold pipes.
- Why suddently?

Aalto University Vibration Course 9-10.5.2023 / K.Saine

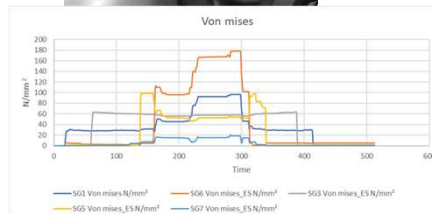


103

Gas Manifold Pipes



- Very high stress levels were measured on mounting area when side supports were tightened on gas pipes
- Same results were reported also on sites.



Aalto University Vibration Course 9-10.5.2023 / K.Saine



104

Gas Manifold Pipes

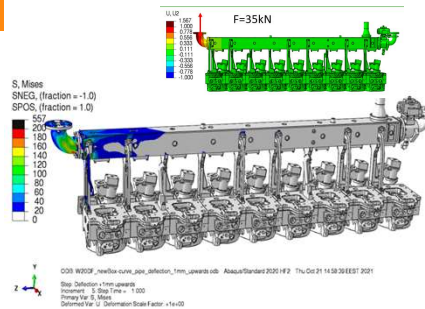
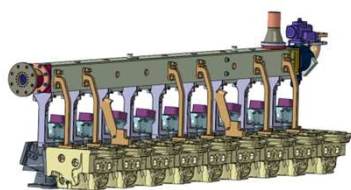


Aalto University Vibration Course 9-10.5.2023 / K.Saine

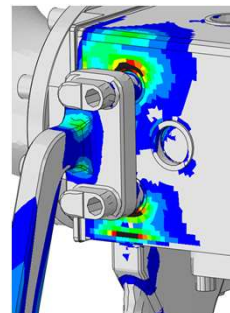


105

Gas Manifold Pipes - FEM



With many different calculations could be easy way to show the stress levels on gas pipes, like pressure load, terminal stresses, engine block bend, CH firing movements, feeding pipe deflections, etc

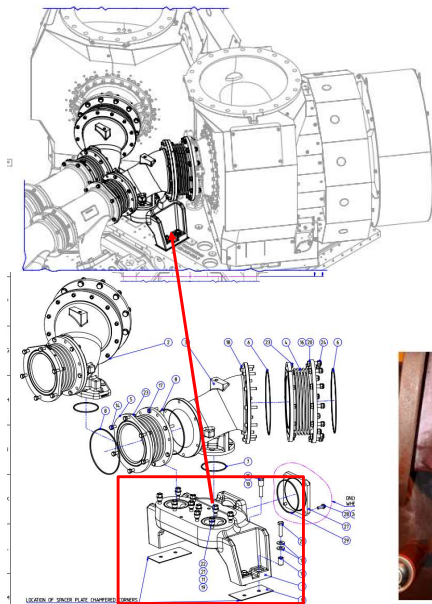


Aalto University Vibration Course 9-10.5.2023 / K.Saine



106

Turbo exhaust pipe bracket 'Jakkara'



During 2019 was reported cracks from many sites on this jakkara, especially Peaker type of Power Plants.

Many different type solutions were tried to solve these challenges without any luck.

Finally it was decided to carry out validation measurements in Vaasa.

Exhaust temperature is 500° and engine block 70°

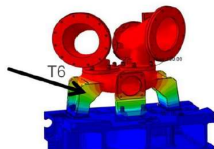
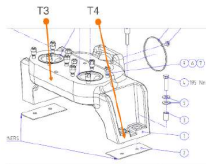
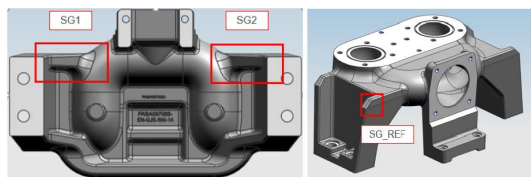


Aalto University Vibration Course 9-10.5.2023 / K.Saine



107

Turbo exhaust pipe bracket 'Jakkara'



- T1: Temp. inlet flange
- T2: Temp. outlet flange
- T3: Temp. connection piece body middle
- T4: Temp. connection piece foot bottom
- T5: Temp. of turbocharger bracket top surface
- T6: Temp. connection piece foot top

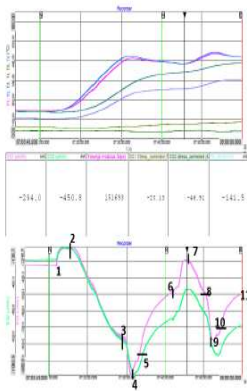
Based on FEM calculations it was expected that main reason for cracks must be movement of feet. It was expected that temperature will influence the movement of feet or in worst case will prevent this movements

Aalto University Vibration Course 9-10.5.2023 / K.Saine



108

Turbo exhaust pipe bracket 'Jakkara'



Original legs
 1= engine started
 1-2= idle load
 2-3= increase load to 100% 12 min
 3-4= dropped load to idle, 2 min
 4-5= engine idle 1min
 5= engine stopped
 5-6= engine cooling, 15 min
 6-7= engine started and load to 50%, 3 min
 7-8= increase load 50%-100%, 3 min
 8-9= load dropped 100% to idle
 9-10= idle load 2 min
 10= engine stopped
 10-11 engine cooling

Figure 3: Engine start and stopping with original feet. The lower picture stress levels. The unit in Y-axis is strain (μm). The stress levels are strain multiply with Young's module which is about 160 MPa. Upper picture are temperatures at different places.

First measurement indicated something strange. When engine load increased (step 2-3) the stress levels increased normally to about 110 MPa. After that, the load was dropped back to idle (step 3-4) in 2 minutes and the stress levels increased suddenly again about 25 MPa. How this is possible, idle load and stress levels increased?

When engine started again (step 6), the stress levels decreased (step 6-7) until at 50% engine load the stress levels started to increase again. All the time the temperatures increased on jakkara. After 100% load (step 8) the load dropped to idle and again stress level started to increase (step 8-9), like in previous stop, but now maximum stress (peak to peak) is about 95 MPa when in first starts it was about 135 MPa.

All three different jakkara behave same way

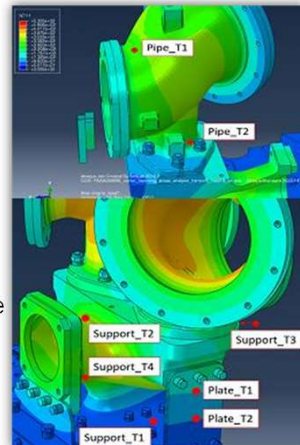
Aalto University Vibration Course 9-10.5.2023 / K.Saine



109

Turbo exhaust pipe bracket 'Jakkara' - FEM

- COLD START
- Fours simulation of the same FEM model but with different boundary conditions were compared to measurement
- Original simulation, under estimated exhaust temperatures, $\text{HTC}=300\text{W}/\text{m}^2\text{k}$ for low load, $\text{HTC}=600\text{W}/\text{m}^2\text{k}$ for high load
- Simulation Case1 (Constant HTC), exhaust temperature according the measurement, constant $\text{HTC}=300\text{W}/\text{m}^2\text{k}$
- Simulation Case2 (Extreme case), exhaust temperature according the measurement, HTC 150-300 for idling and $600\text{W}/\text{m}^2\text{k}$ for power ramp
- Simulation Case3 (Best fit), exhaust temperature according the measurement, HTC 150-300 for idling and $450\text{W}/\text{m}^2\text{k}$ for power ramp



Aalto University Vibration Course 9-10.5.2023 / K.Saine



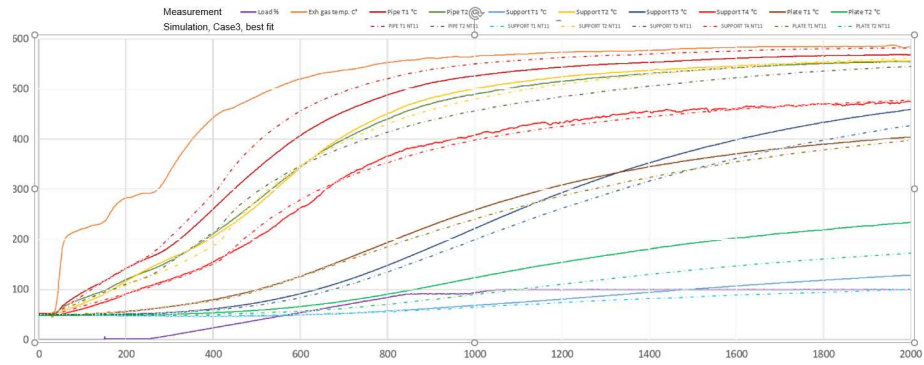
110

Turbo exhaust pipe bracket 'Jakkara' - FEM

COLD START, SIMULATION CASE3



- Simulation case3, best fit to measurement
- HTC values were chosen so that the simulated temperature and temperature gradient close to critical location(Pipe T2, SupportT2,T4) at the most critical point of time(600s-1000s) are close to measured values



Aalto University Vibration Course 9-10.5.2023 / K.Saine

