



KY

1911



Founded in 1911 as a student union of
Helsinki School of Economics

2010



Aalto University combines **Helsinki School of Economics, Helsinki University of Technology** and **University of Art and Design Helsinki**

2010



AYY is founded as student union of **Aalto University**

2010



Due new student union, **KY**
becomes an association and is
divided into **two parts**

The logo consists of the letters 'KY' in a stylized, bold, white font, followed by the year '1911' in a similar font. The entire logo is set against a dark green rectangular background.

KY 1911

Aalto University Business Students -
an association for all business students
in Aalto University

The logo features the letters 'KY' in a stylized, bold, white font, with the word 'FOUNDATION' in a smaller, sans-serif font directly below it. The logo is set against a dark green rectangular background.

KY
FOUNDATION



Foundation for Business Students
in Aalto University - Funds KY's
activities

KY's services

Advocacy

- Guide and help Aalto BIZ to be a better education for our members
- Advocate for the rights of Business students on a national level

Work & Career

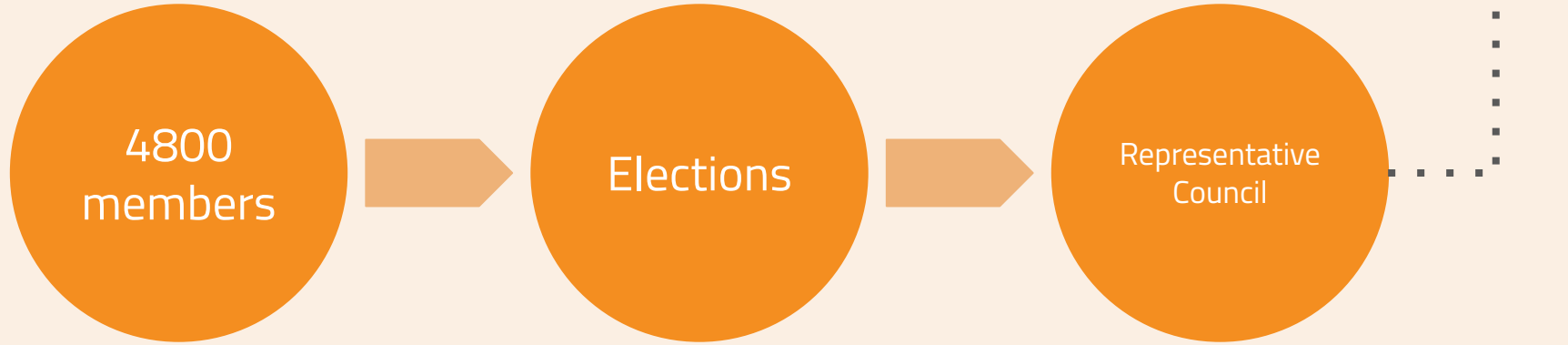
- Offer opportunities for members to know about different companies
- Partnerships and KY benefits

Community

- Culture and wellbeing events such as the Boston Night and the Wellbeing Week

Remember we are here to help you!

KY's organizational structure



KY's organization

KY Office

Executive Board

Employees

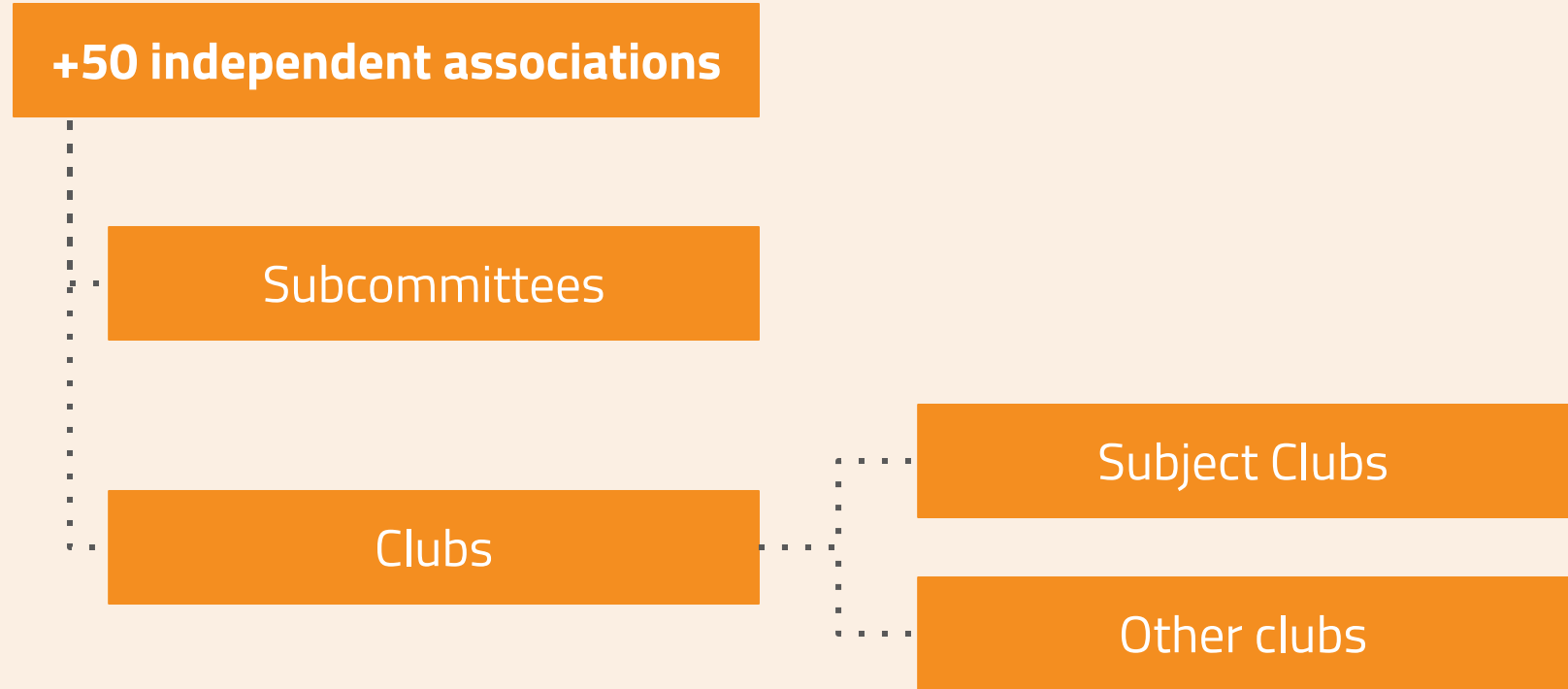
KY's services

KY's premises

Association support

Events for KY members

KY's external structure



KY's Executive Board

ky.fi/contact

Jenni Lehtinen

Vice Chair, Academic Affairs, Finances

Inga Rouvinen

Premises, Masters' Students, Subject Clubs, Alumni

Tilda Leikola

Corporate Relations, Work & Career, Internationality

Kim Jokinen

Academic Affairs, Elections



Meeri Korpi

Communications, Volunteers, Elections, Sustainability

Tero Karesniemi

Culture, New Students

Roosa Savola

Sports & Wellbeing, Clubs, Probba

Rasmus Räsänen

Chair of the Board

KY's Employees

ky.fi/contact



Heidi Riihimäki
Executive Director



Edit Lahtinen
Association Coordinator



Jatta Saari
Culture Producer



Saara Savolainen
Communications Coordinator



Mirka Larjomaa
Art Director



Emmi Seppälä
Corporate Relations
Coordinator



Samu Mustonen
Administration
Coordinator



Tuomo Erkinharju
IT Coordinator



Inka Palimo
Tutor Coordinator



Salli Ahtiainen-Helanne
BeWell-project Coordinator

You will find us from

KY's social media channels

Facebook: KY - Aalto University Business Students

FB groups: KY Today

KY Events

KY Career

Instagram: **@ky_1911**

TikTok: **@ky1911_**

LinkedIn: KY Career

Telegram: **@ky_1911, @ky_events**



LinkedIn



KY 1911

Code of Conduct in the KY community



Probba, Fall 2023

AALTO UNIVERSITY BUSINESS STUDENTS
Aalto-yliopiston kauppatieteiden ylioppilaat ry

Konemiehentie 4, 02150 Espoo
www.ky.fi

Code of Conduct

- ❑ **Every KY event is dedicated to providing safe, harassment-free conditions for everyone,**
 - ❑ Regardless of for example: gender, gender identity, age, sexual orientation, disability, physical appearance, body size, race, ethnicity, religion...
- ❑ Code of Conduct is strictly applied. **Zero tolerance for harassment and discrimination.**
 - ❑ Examples of harassment may include for example making sexual comments about appearance, unwelcome touching, inappropriate sexual gestures, or sending suggestive communications in any format. Inappropriate behavior includes all kinds of violence.
- ❑ **Using illegal drugs in KY's premises and during KY's events is strictly forbidden.** Police is always notified of any observations.
- ❑ **Breaking the Code of Conduct is sanctioned.**
 - ❑ Official warning, ban to volunteer at KY, termination of membership

Code of Conduct: How to act

❑ When you see/suspect any misconduct during an event...

- ❑ Take action. If you can't or don't want to do it alone, ask a friend, tutor or an organizer to support you. Asking someone if they're okay is always better than assuming.
- ❑ Call 112 if needed. If you see any crime or serious threat, contact emergency services. Follow the situation, but remember to take care of your own safety, too.
- ❑ Contact event organizers. Tell the designated harassment contact person or anyone in charge of the event about what is happening, or what you have observed.
- ❑ Take notes. Specific information is always helpful when situations are clarified later on.
- ❑ Contact Heidi/Rasmus. Executive Director and Chair of the Board at KY will look into what has happened, hear all relevant parties and decide on the measures to go forward.

Heidi Riihimäki

Executive Director

heidi.riihimaki@ky.fi

0500 430 546

Rasmus Räsänen

Chair of the Board

rasmus.rasanen@ky.fi

044 550 5696

Make an impact as a Mursu!

- ❑ Respect people's own choice.
- ❑ Make sure everyone is comfortable.
- ❑ Take action when you see inappropriate behaviour.
- ❑ Acknowledge your own boundaries.
- ❑ Think before you do or speak.

If your friend or other student is behaving inappropriately, you can and you should intervene in the situation.

Keep in mind these situations

❑ In a bar and on the dancefloor

- ❑ Any kind of physical contact without consent is off limits
- ❑ Trying to get people drunk (offering a lot of drinks, taking them to buy drinks at the bar)

❑ On the way home

- ❑ Do your friends know their way home at night?

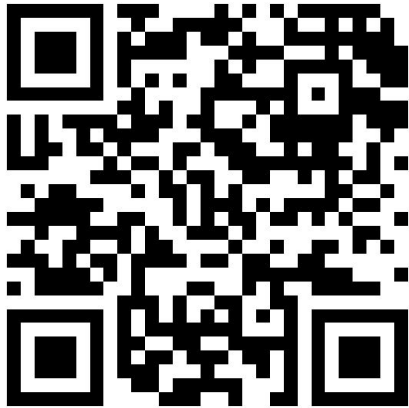
❑ Being alone

- ❑ Even though it is not forbidden in our Code of Conduct, make sure your friends are not left alone and try to create a welcoming atmosphere

KY Code of Conduct

Can be found on our website:

<https://www.ky.fi/about-ky/code-of-conduct>



KY 1911

AALTO UNIVERSITY BUSINESS STUDENTS
Aalto-yliopiston kauppätieteiden ylioppilaat ry





KY 1911

Thank you! Questions?

Probba Fuksis of 2023

AALTO UNIVERSITY BUSINESS STUDENTS
Aalto-yliopiston kauppatieteiden ylioppilaat ry

Konemiehentie 4, 02150 Espoo
www.ky.fi