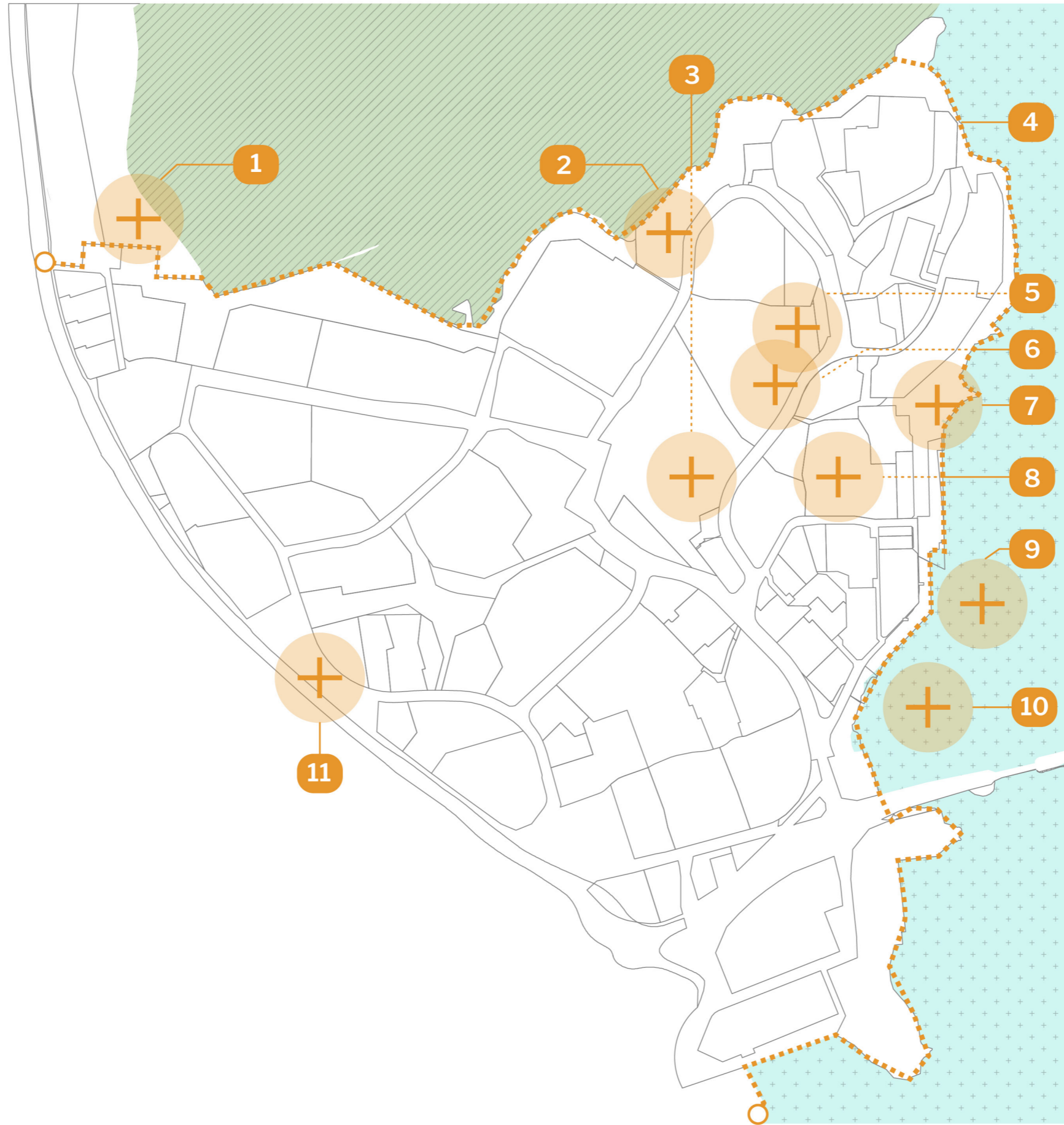


PUBLIC SPACE, RECREATIONAL AREAS AND URBAN AREAS

AALTO GROUP 9 - TU DELFT

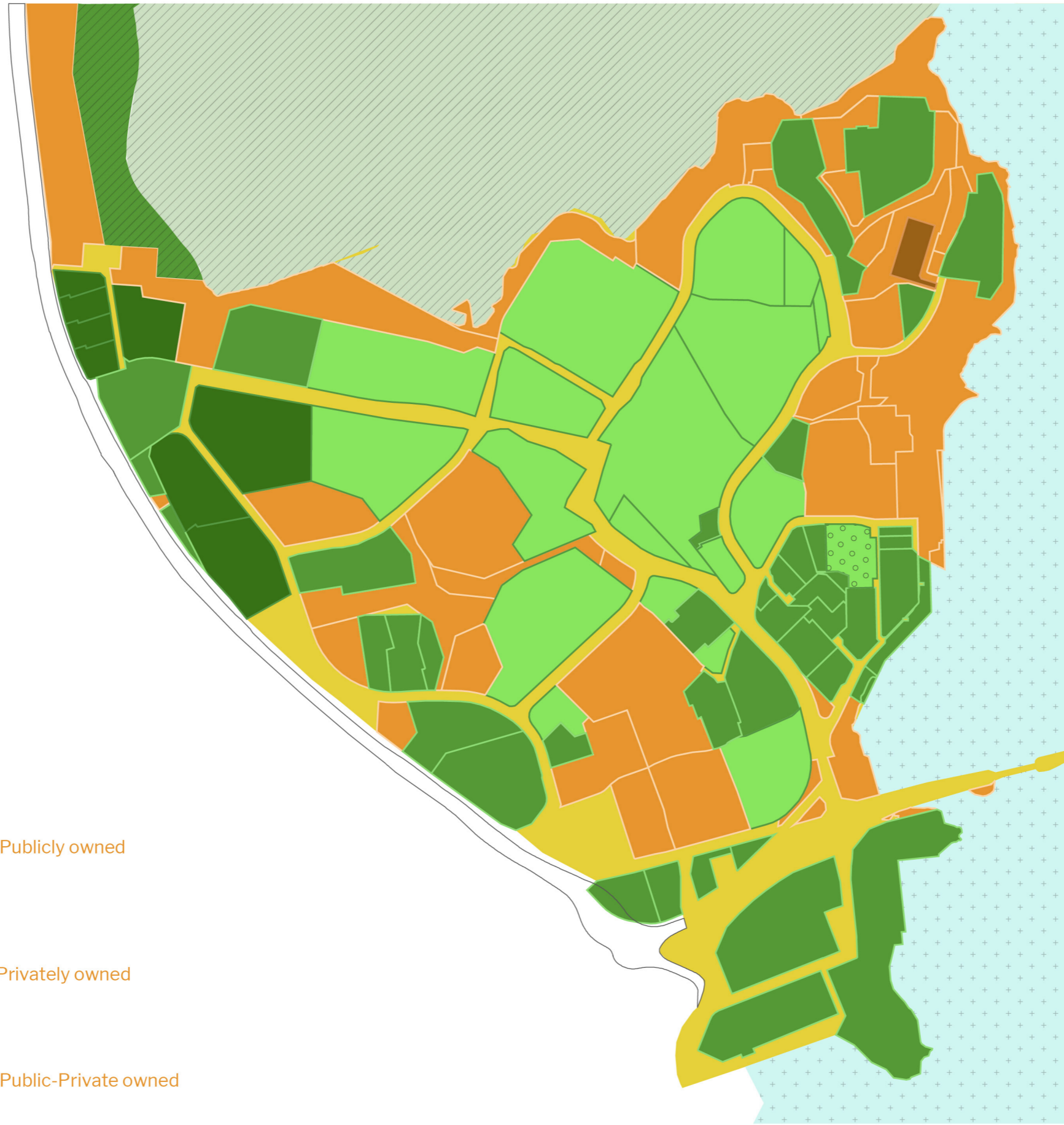
Divya
Emile
Gijs
Janna



Public Spaces, Recreational Areas and Urban Life

- 1 Otaneimi bird tower
- 2 Miinusmaan kyykkäkenttä park
- 3 Alvarinaukio park
- 4 Espoo waterfront walkway
- 5 Otaniemi Urban Garden
- 6 Aalto skateboard park
- 7 Water recreational activities
- 8 Otaneimi sports activities
- 9 Archipelago ferries
- 10 Swimming
- 11 Tapiolan Equestrian club





Land ownership on campus

- City of Espoo
 - Espoo Church
 - Senate Real Estate
 - Nature areas
 - Aalto University
 - Technopolis
 - Other private property
 - Aalto University 50%
City of Espoo 50%
- } Publicly owned
} Privately owned
} Public-Private owned





Land ownership on campus

Publicly owned

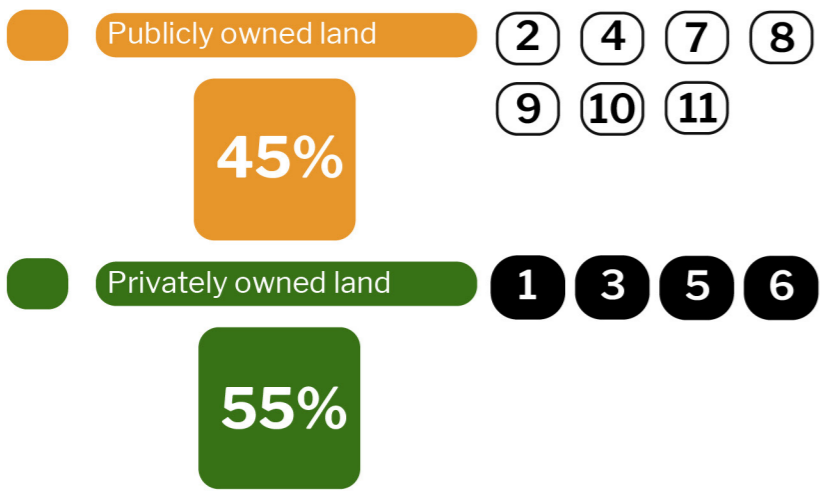
45%

Privately owned

55%



Major recreational spaces on public or privately owned land



Other recreational spaces on public or privately owned land
-eateries
-libraries
-supermarkets
-event venues

- Publicly owned land
- Privately owned land



THE SOCIAL ENVIRONMENT_ANALYSIS

CHARACTERISTICS

OTANIEMI
OUTDOOR
LIFESTYLE



CROSS-COUNTRY SKIING



BIRDWATCHING



SCENIC EVENTS



HANG OUT



MOVIE CITY ESPOO



SKATEBOARDING



AQUASPORTS



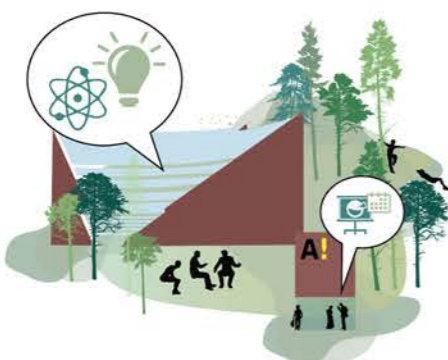
EQUESTRIAN SPORTS



ICE SKATING



SPORTS AND ACTIVITIES



STUDENT LIFE AND HANGOUT



PLAYING IN THE SNOW



CULTIVATING THE ENVIRONMENT



TRECKING



A WALK IN NATURE