



# Tanska

- Pinta-ala: noin 43 000 km<sup>2</sup>
- Asukasluku (2022): noin 5,9 miljoonaa
- Väestötiheys: 136,3 as. / km<sup>2</sup>
- Meri-ilmasto, leudot talvet, kesäkelit vaihtelevia





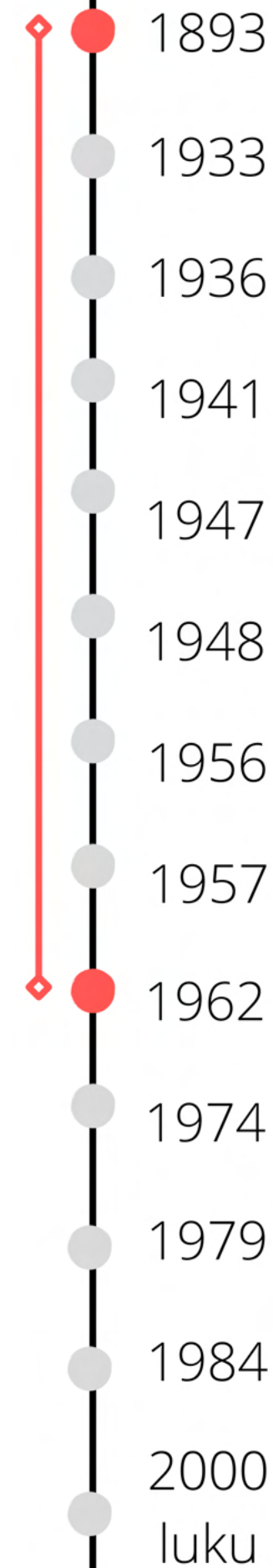
Moderni aika  
1890 - 1970

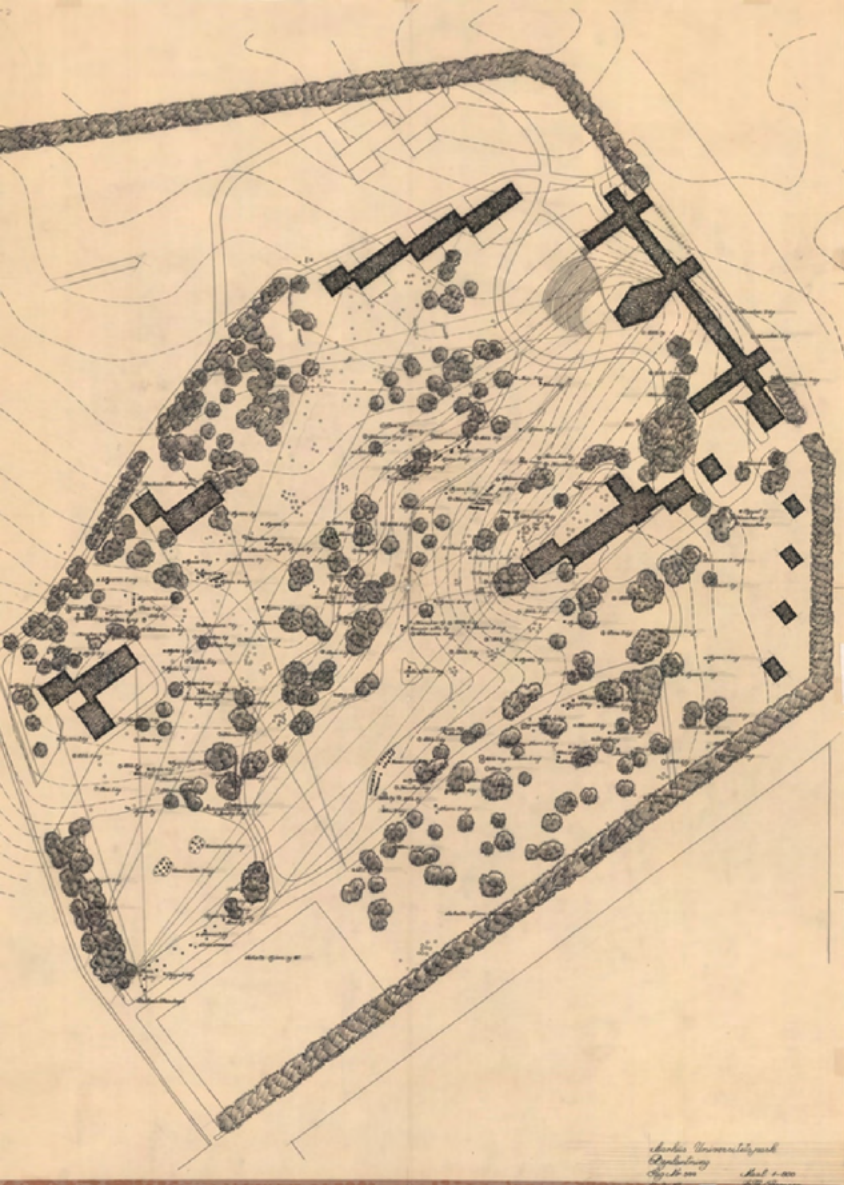
Postmoderni aika  
1960 - 1980



# Carl Theodore Sørensen

1893 - 1979

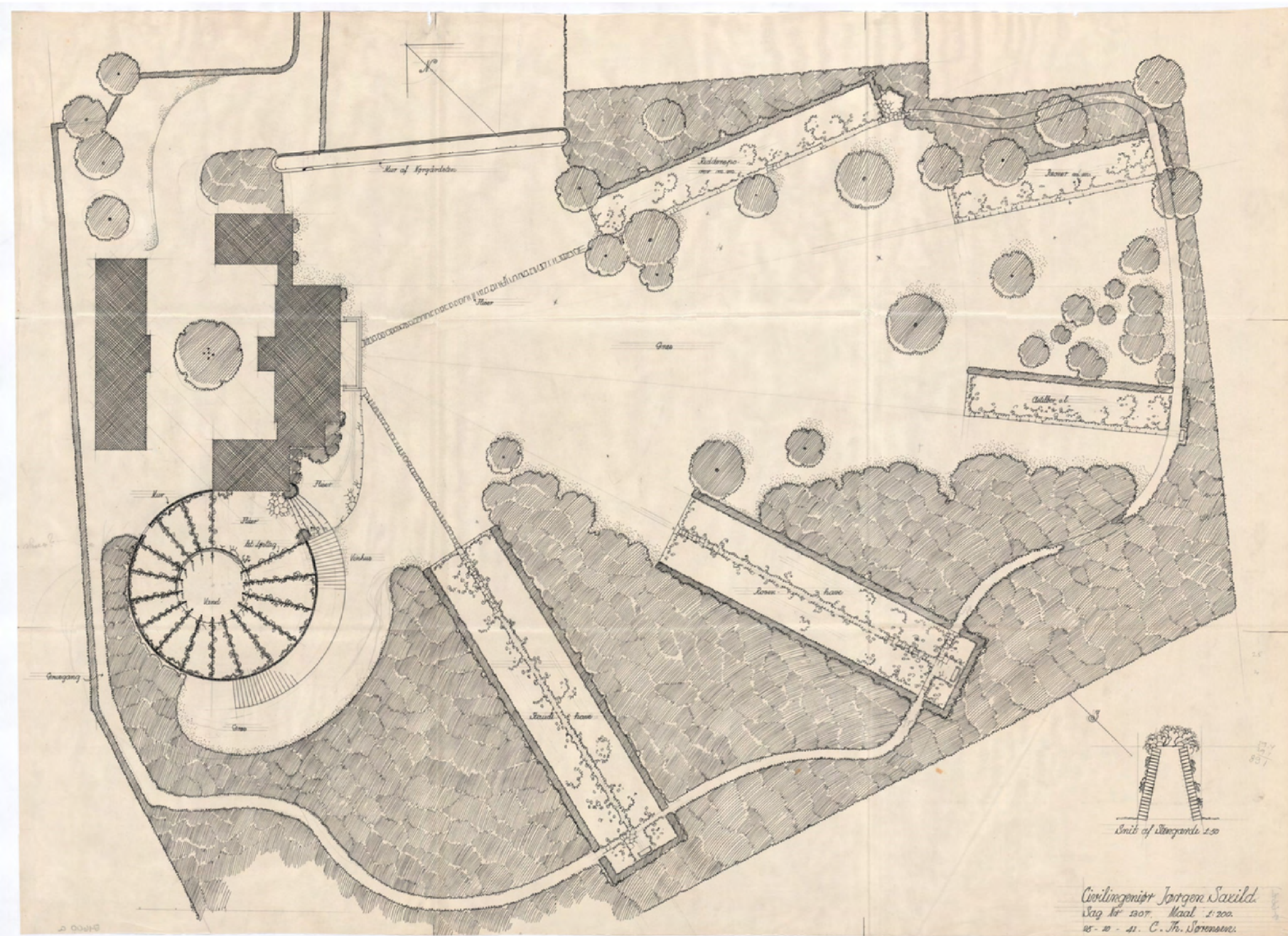




C.Th. Sørensen  
Aarhus  
yliopiston puisto  
1933

- 1893
- 1933
- 1936
- 1941
- 1947
- 1948
- 1956
- 1957
- 1962
- 1974
- 1979
- 1984
- 2000 luku



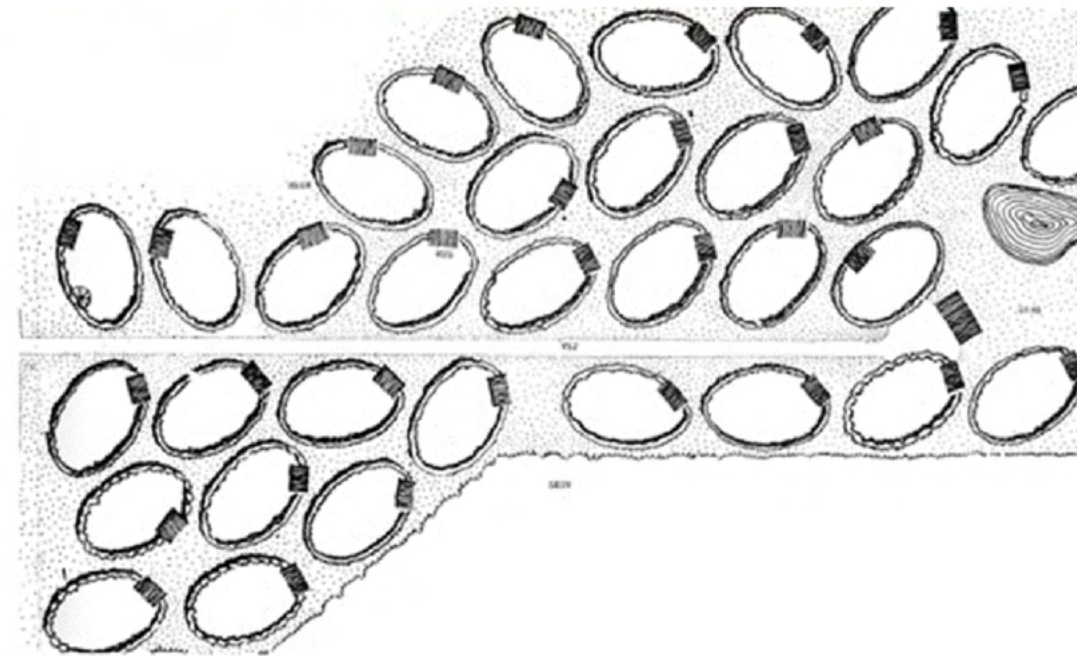


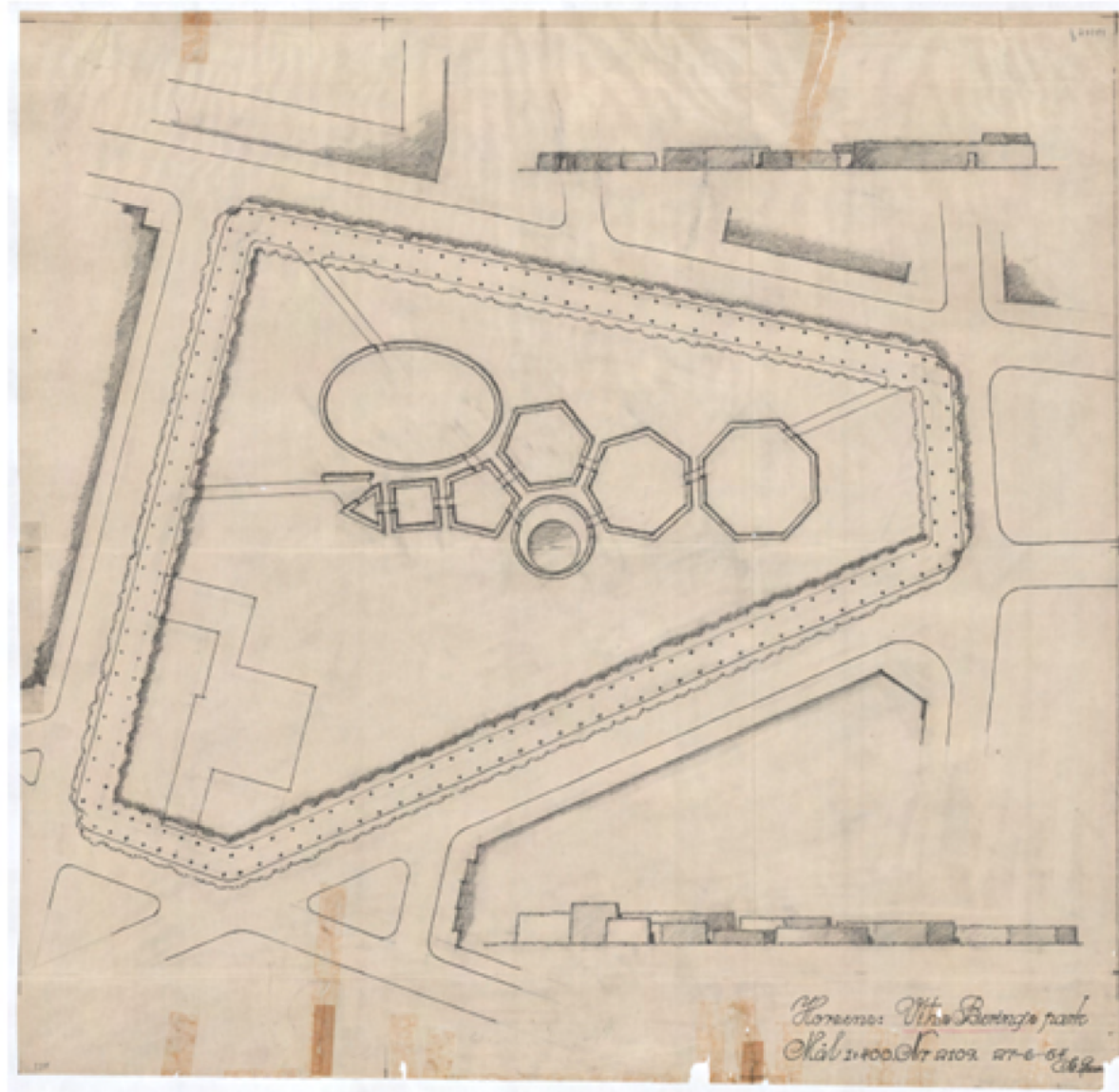
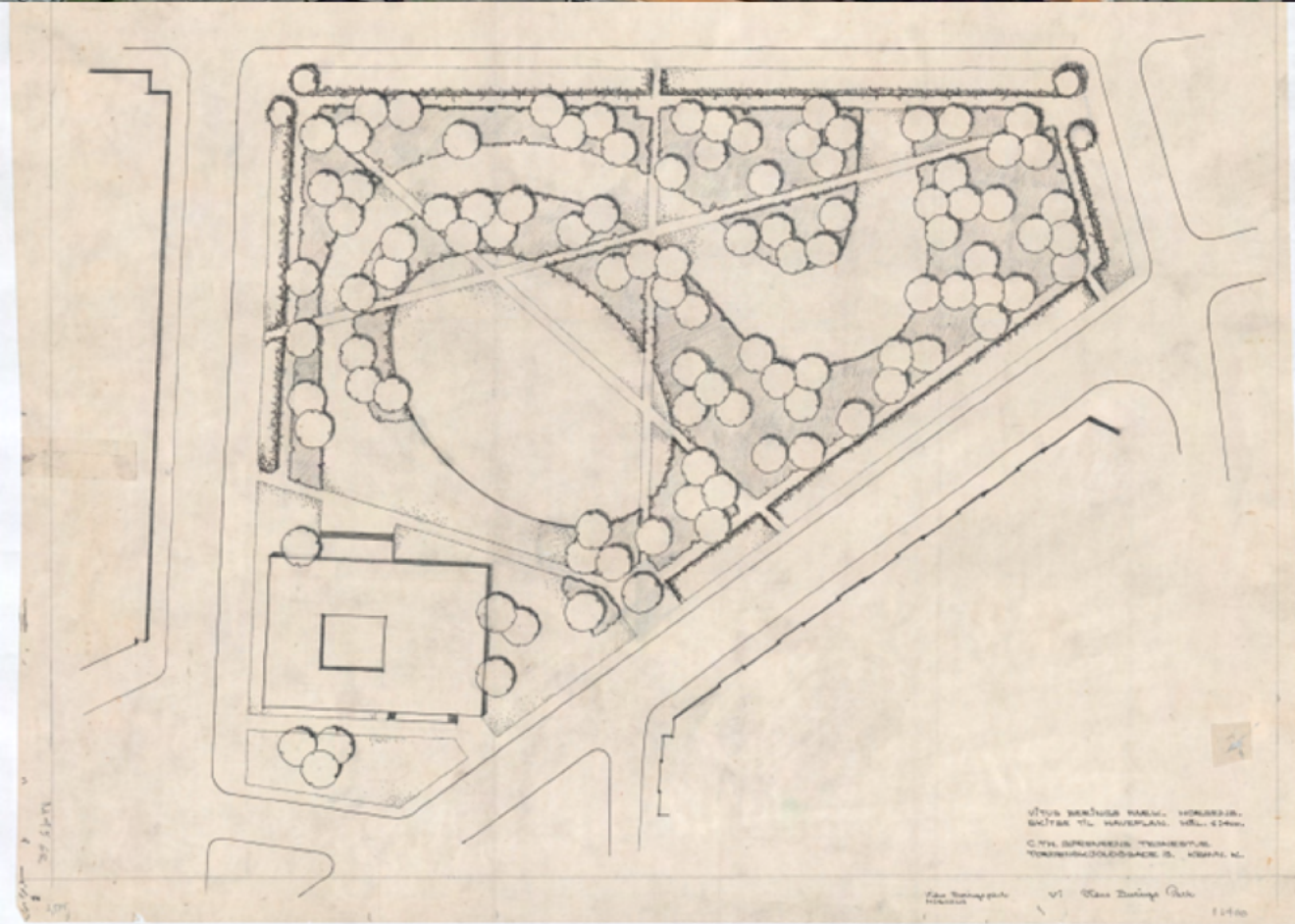
C.Th. Sørensen  
 Jaegersborg Allé 139  
 Yksityispuutarha  
 Jorgen Saxildille  
 Gentofte  
 1941

- 1893
- 1933
- 1936
- 1941
- 1947
- 1948
- 1956
- 1957
- 1962
- 1974
- 1979
- 1984
- 2000 luku

C.Th. Sørensen  
Nærumin siirtolapuutarha  
The Allotment Gardens  
1948

- 1893
- 1933
- 1936
- 1941
- 1947
- 1948
- 1956
- 1957
- 1962
- 1974
- 1979
- 1984
- 2000 luku





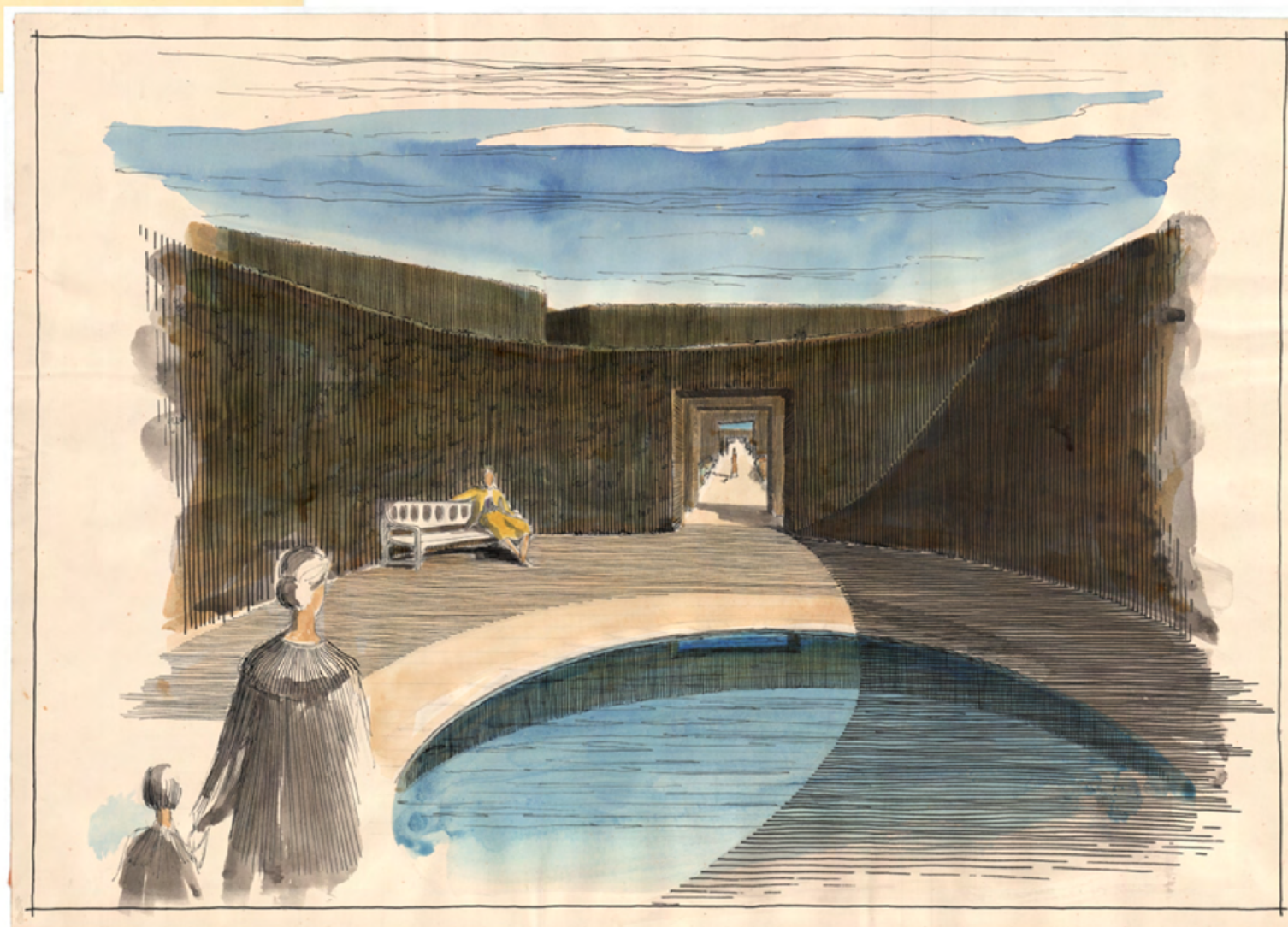
C.Th. Sørensen  
Vitus Berings Park  
Horsens  
1954 - 1956

- 1893
- 1933
- 1936
- 1941
- 1947
- 1948
- 1956
- 1957
- 1962
- 1974
- 1979
- 1984
- 2000 luku

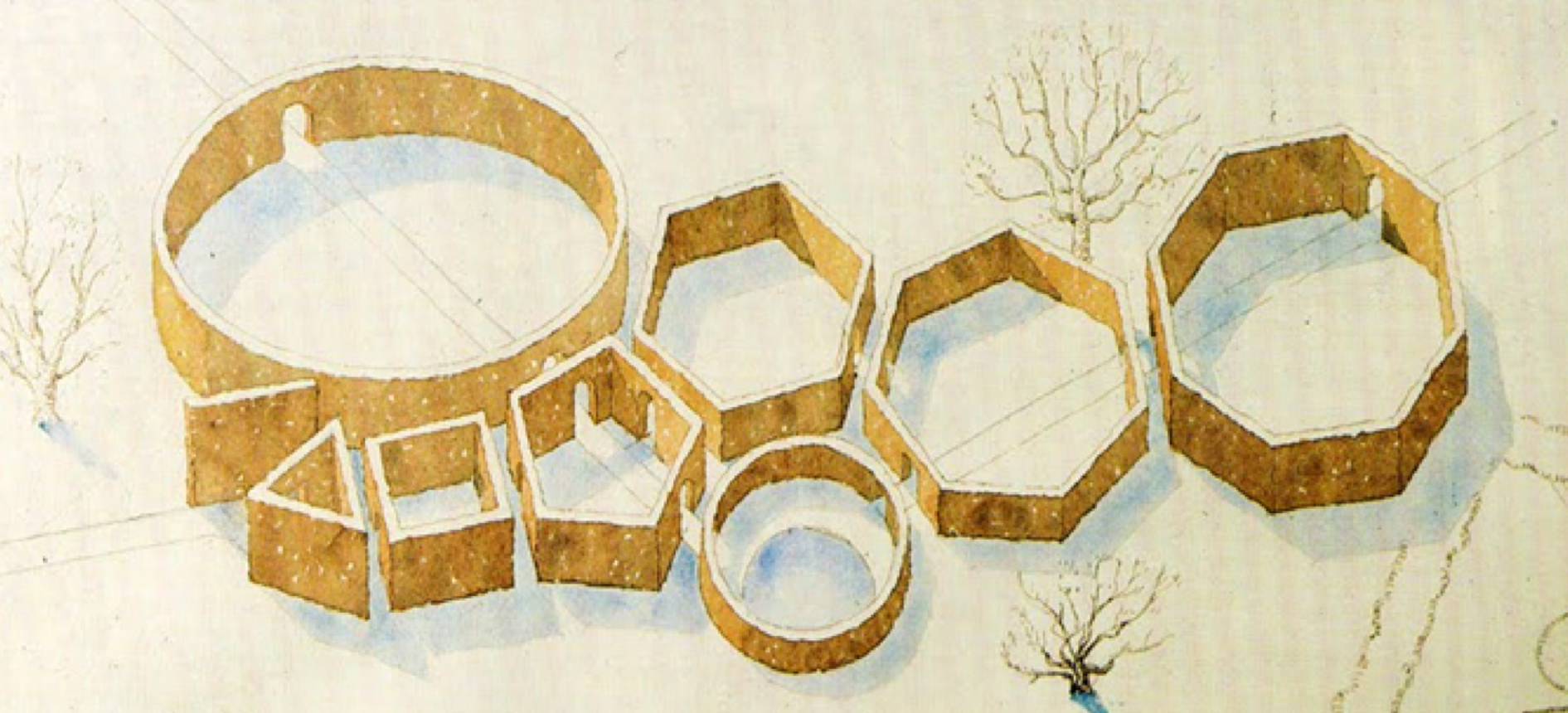




C.Th. Sørensen  
Vitus Berings Park  
Horsens  
1954 - 1956



- 1893
- 1933
- 1936
- 1941
- 1947
- 1948
- 1956
- 1957
- 1962
- 1974
- 1979
- 1984
- 2000
- luku



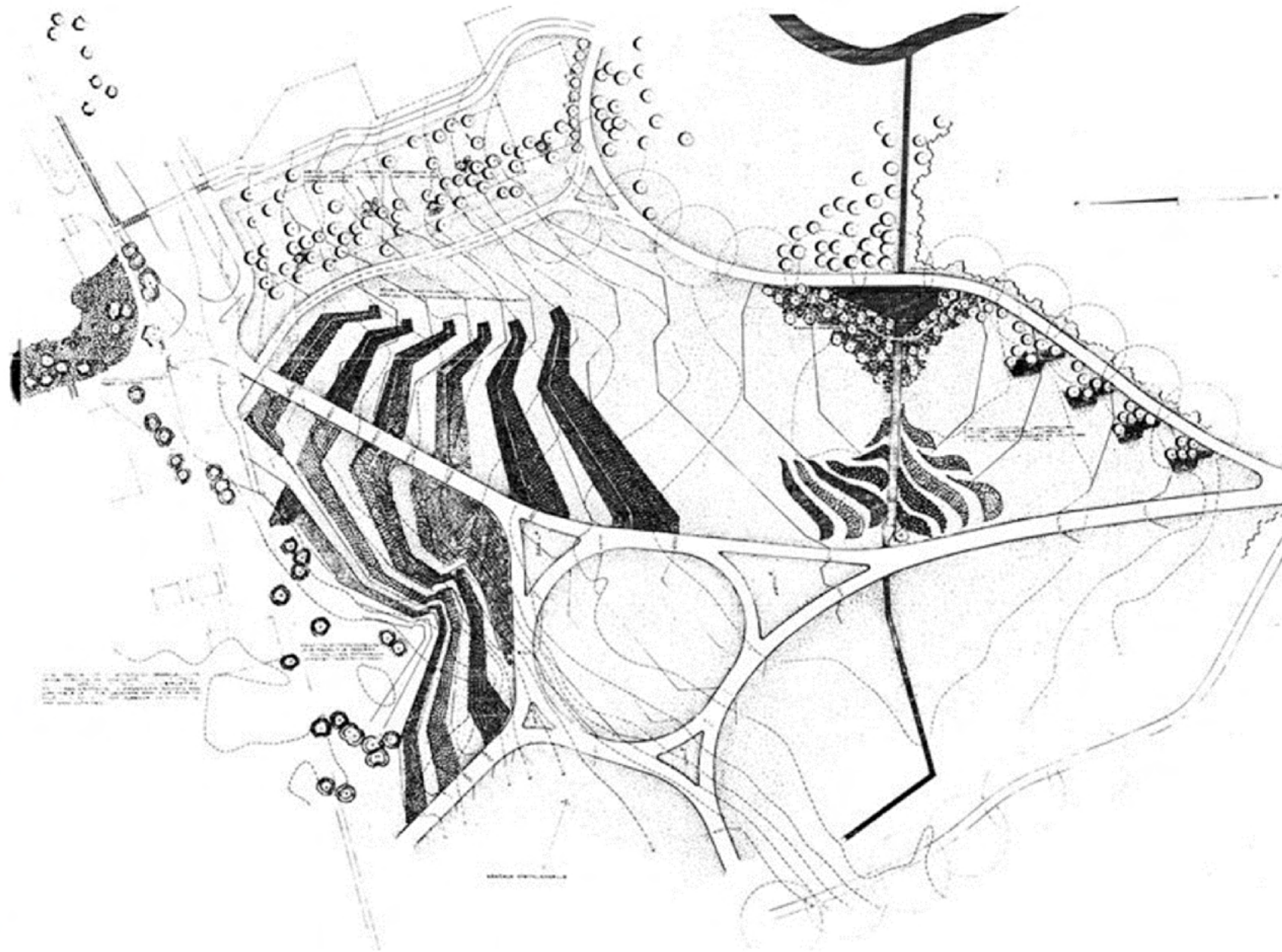
C.Th. Sørensen  
Geometric gardens  
Herning  
1984

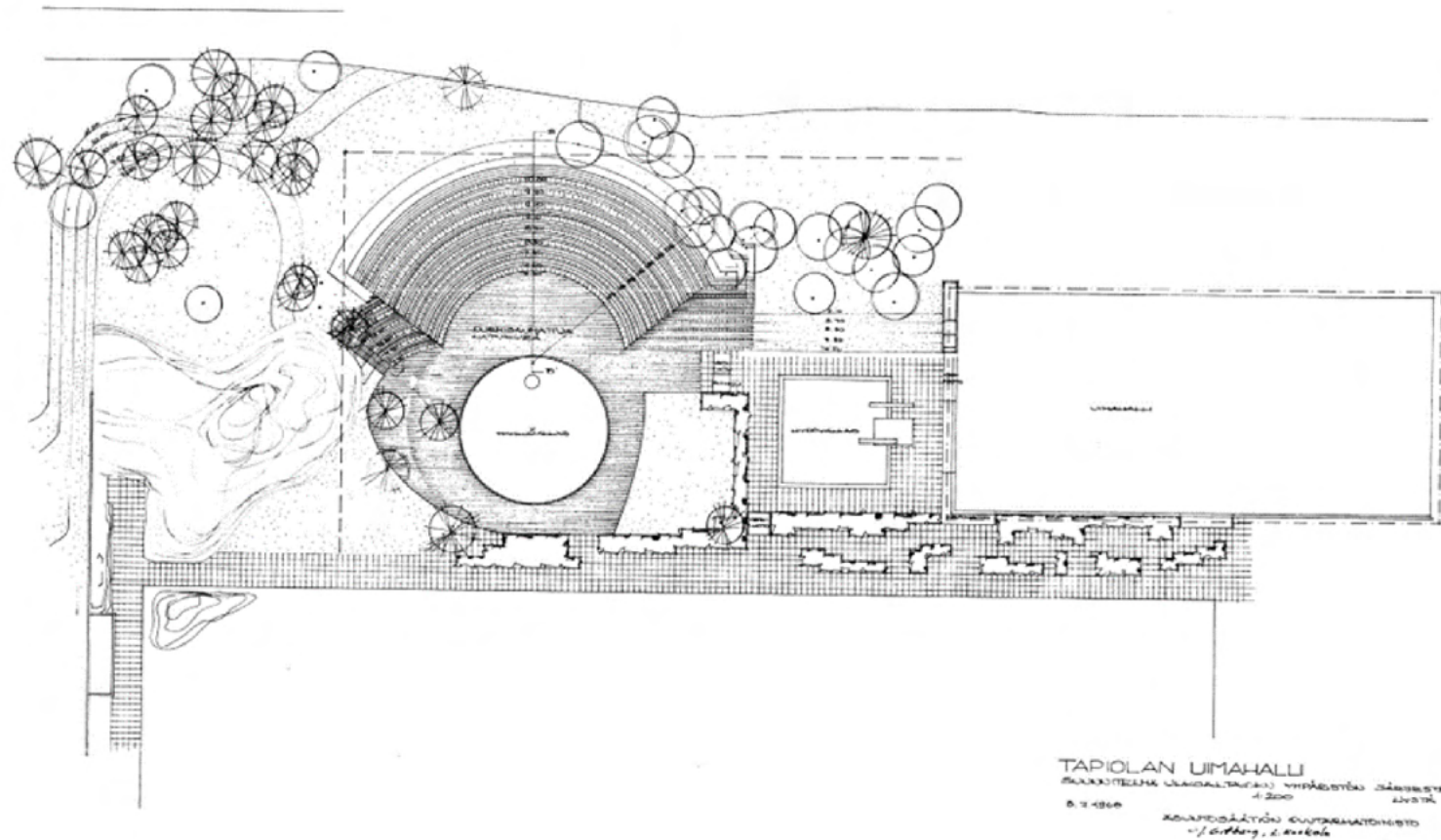


- 1893
- 1933
- 1936
- 1941
- 1947
- 1948
- 1956
- 1957
- 1962
- 1974
- 1979
- 1984
- 2000
- luku

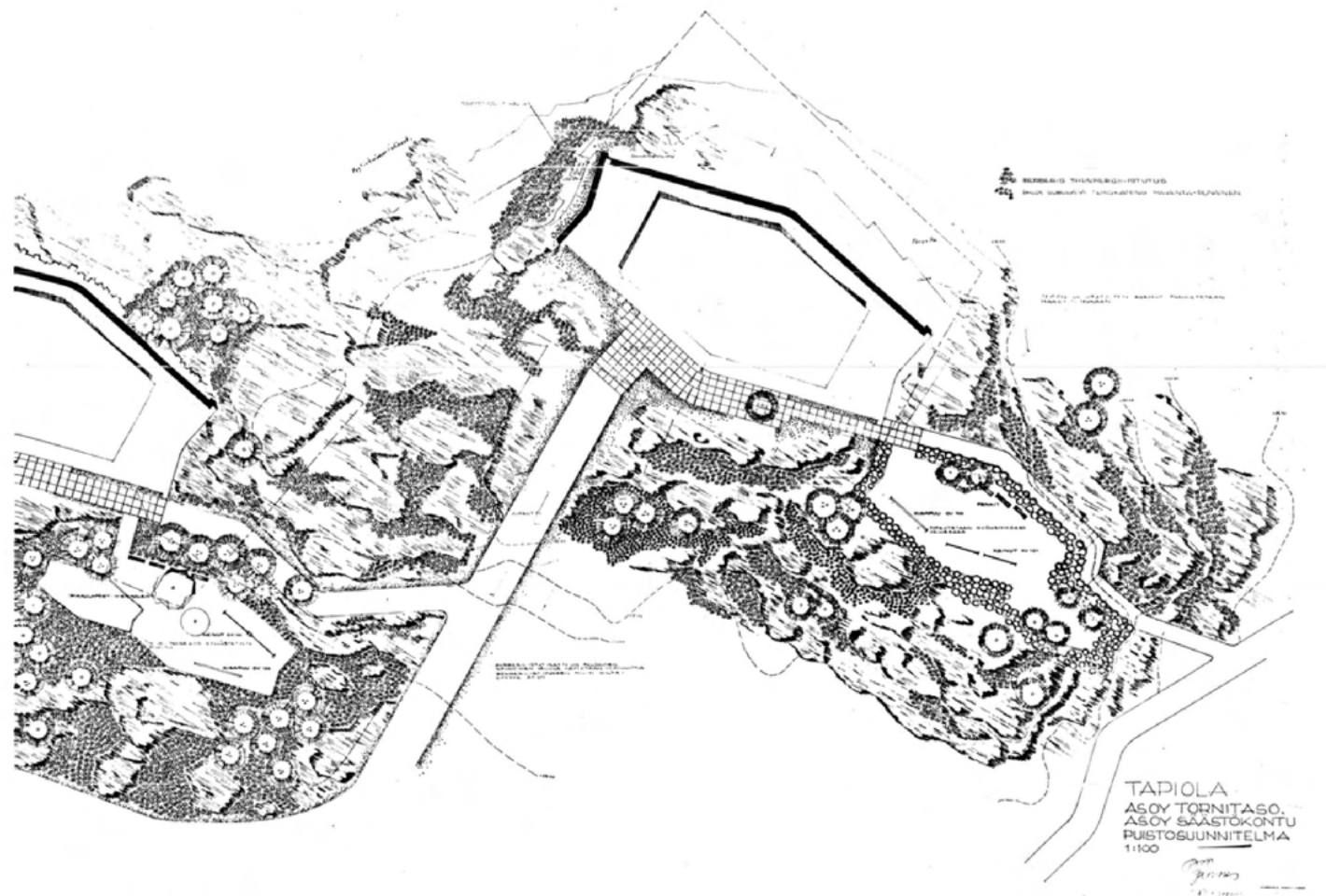


Jussi jännes  
Leimunniity, Tapiola  
1961





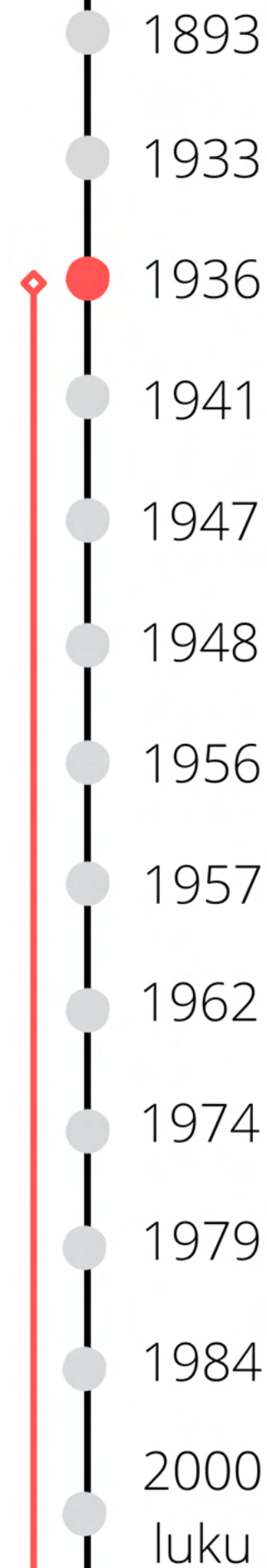
Jussi Jännes  
 Tapiola





# Jan Ghel

1936-



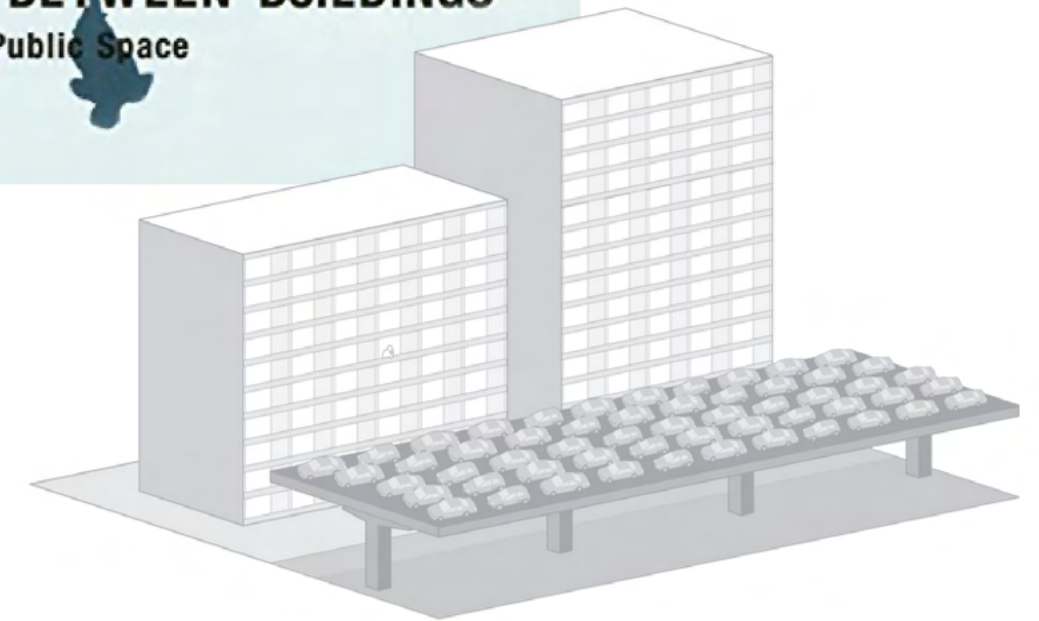
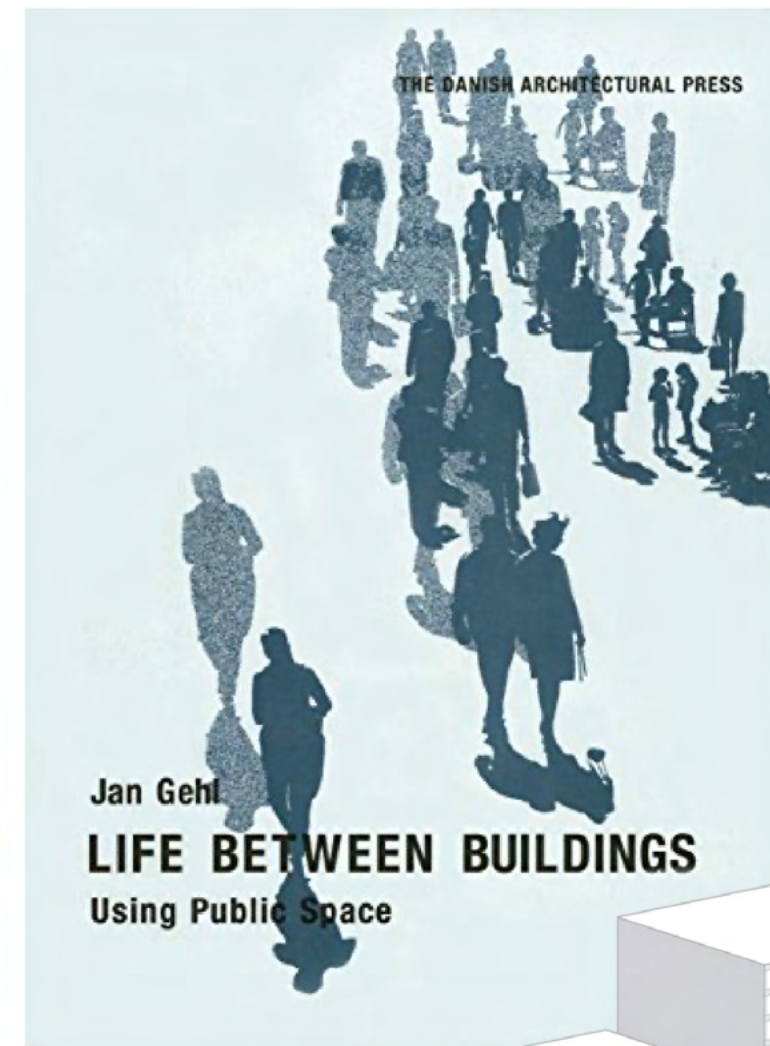
**Life**



**Space**



**Buildings**





nykyään



vuonna 1889



Jan Gehl  
 Strøget  
 Kööpenhamina  
 1962

- 1893
- 1933
- 1936
- 1941
- 1947
- 1948
- 1956
- 1957
- 1962
- 1974
- 1979
- 1984
- 2000
- luku

Development of  
car-free streets and  
squares in  
Copenhagen city  
centre –1962-96

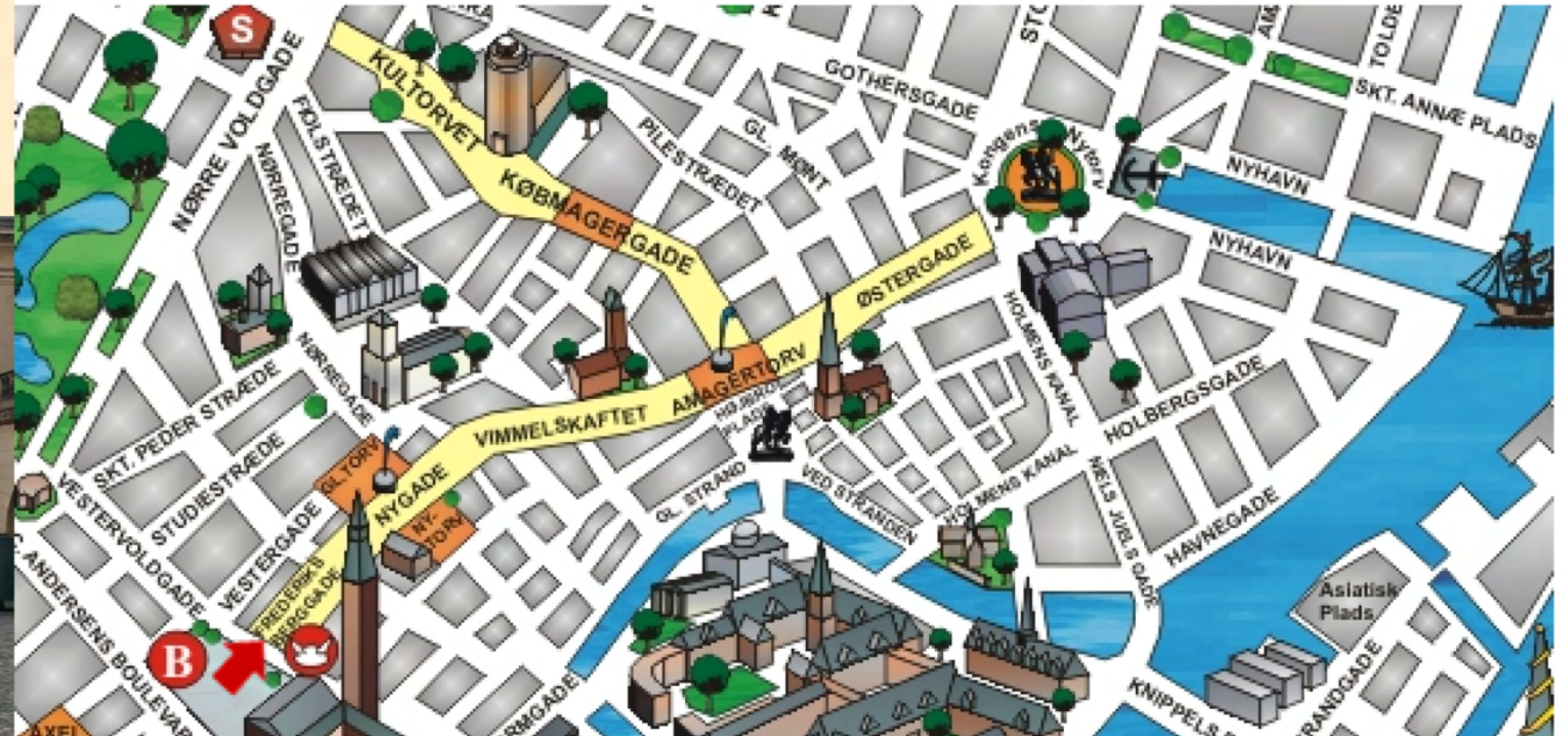


1962 : 15 800 m<sup>2</sup>



1996 : 95 750 m<sup>2</sup>

Jan Gehl  
Strøget  
Kööpenhamina  
1962



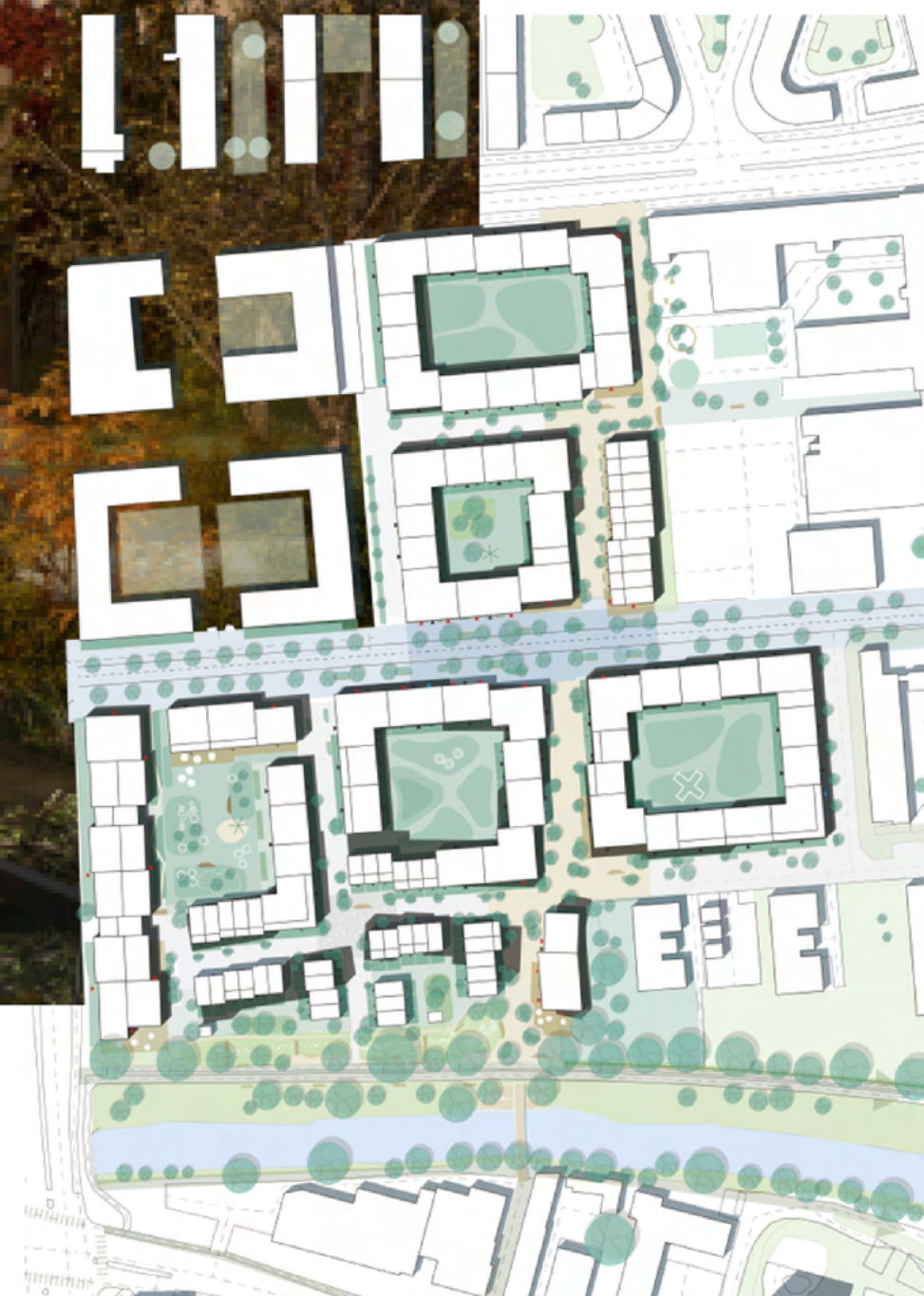




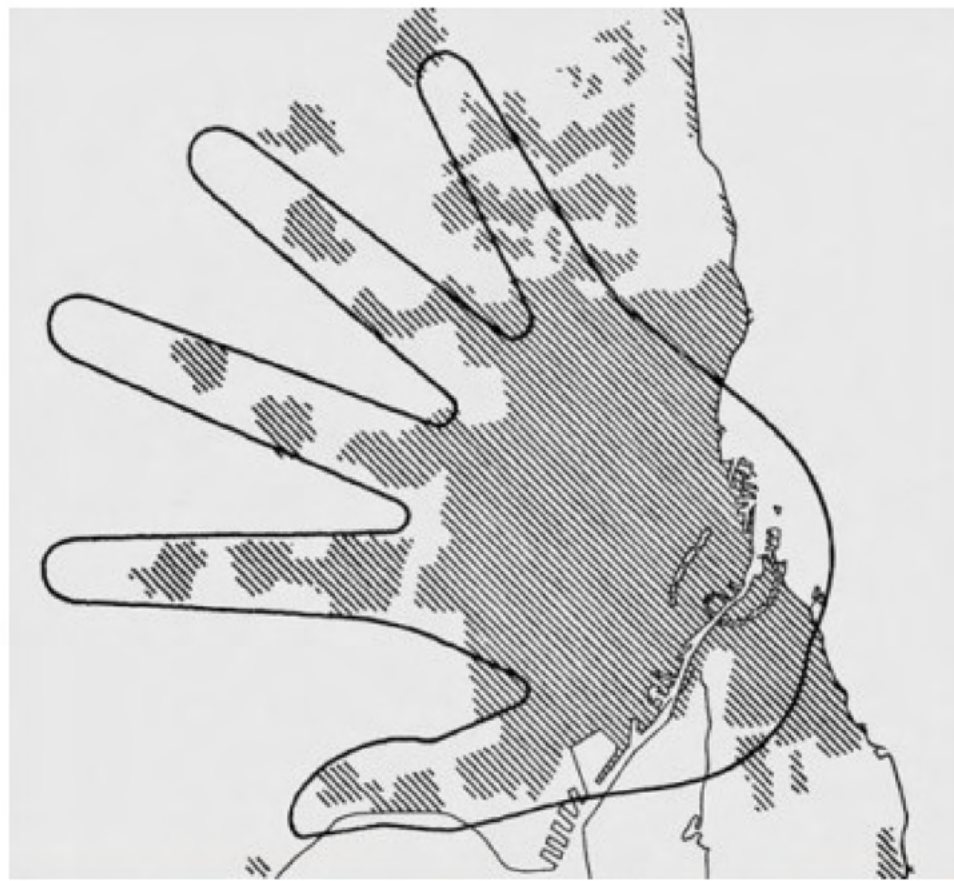
Jan Gehl  
Carlsberg byen  
Kööpenhamina  
2006-

- 1893
- 1933
- 1936
- 1941
- 1947
- 1948
- 1956
- 1957
- 1962
- 1974
- 1979
- 1984
- 2000 luku

Jan Gehl  
Aarhus  
2018-2020



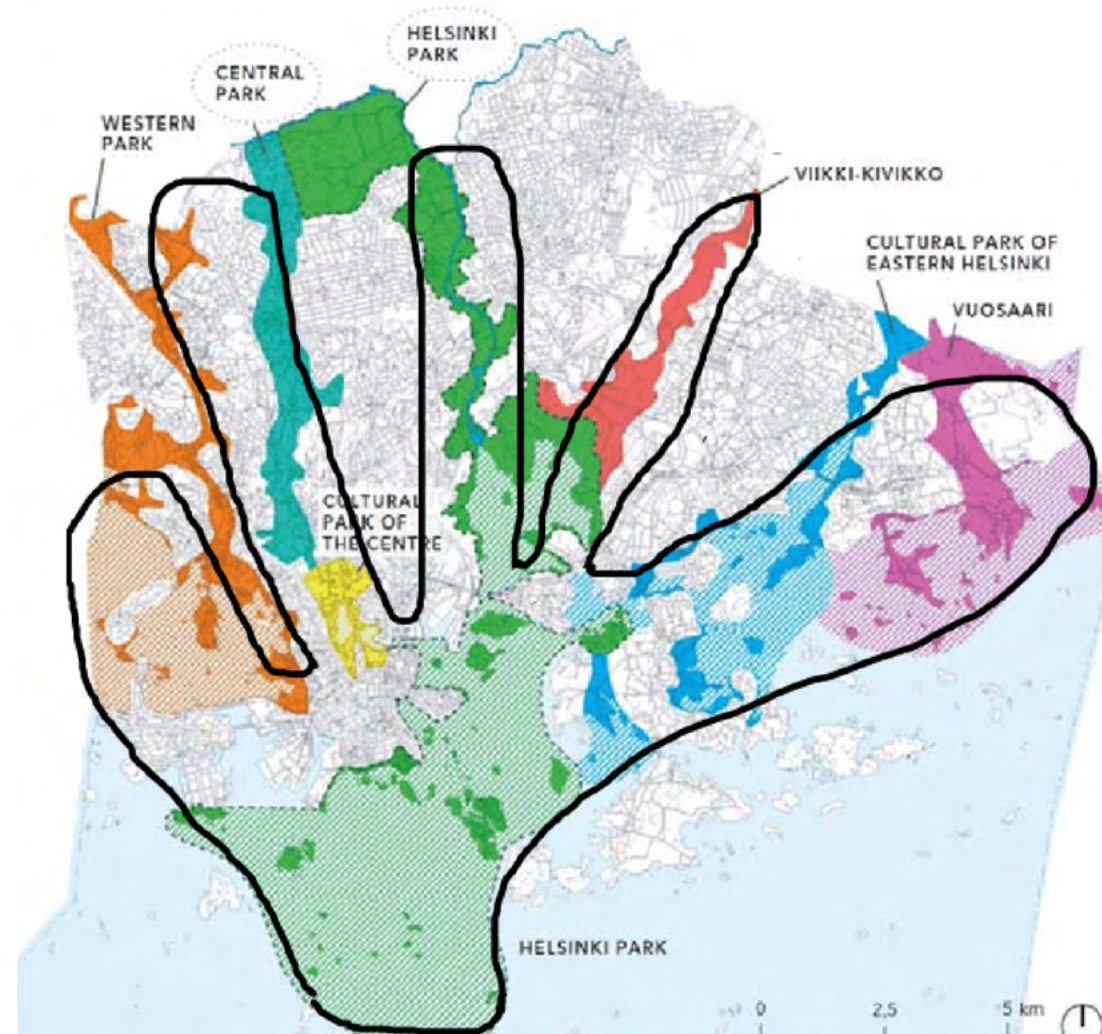
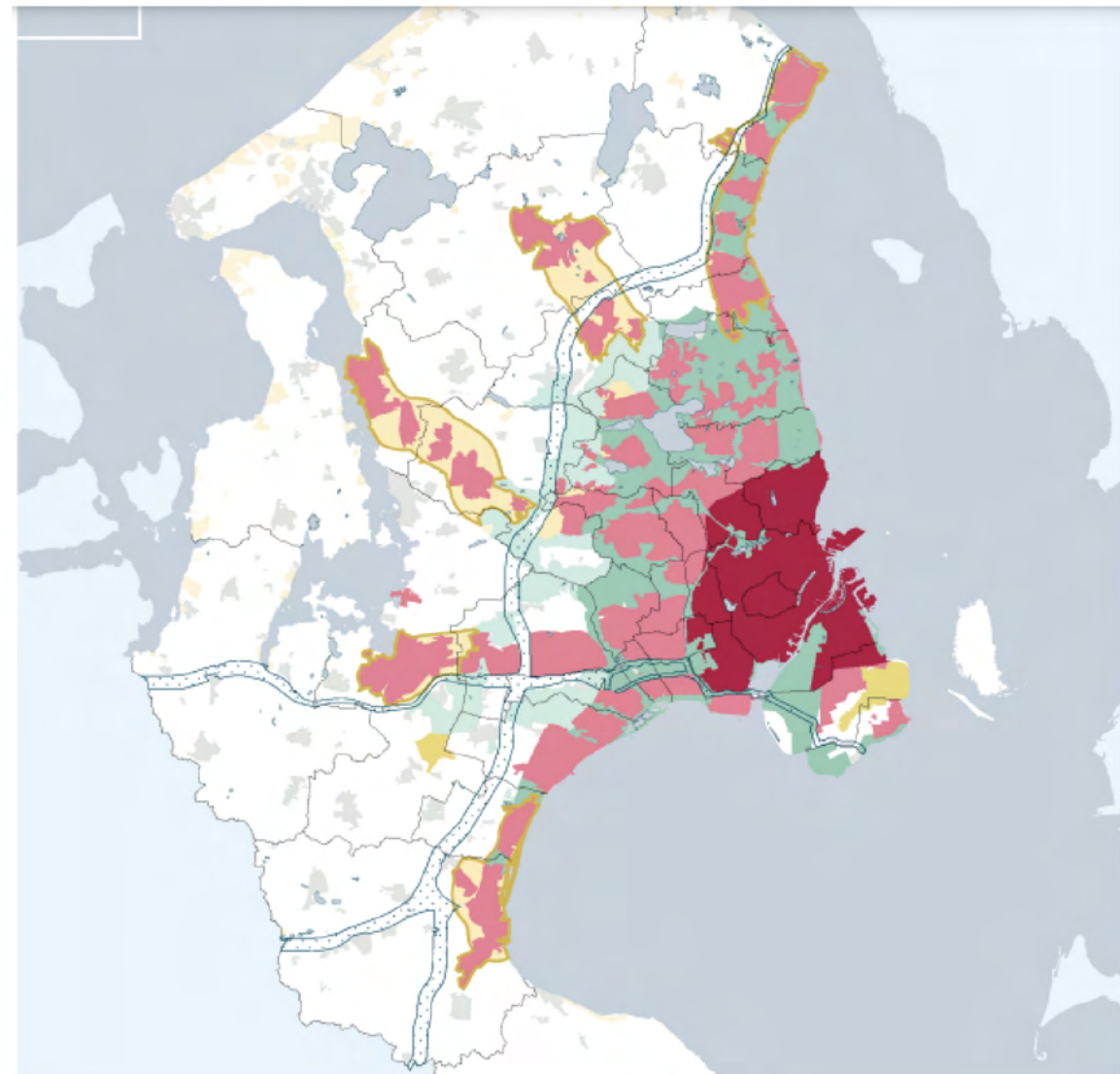




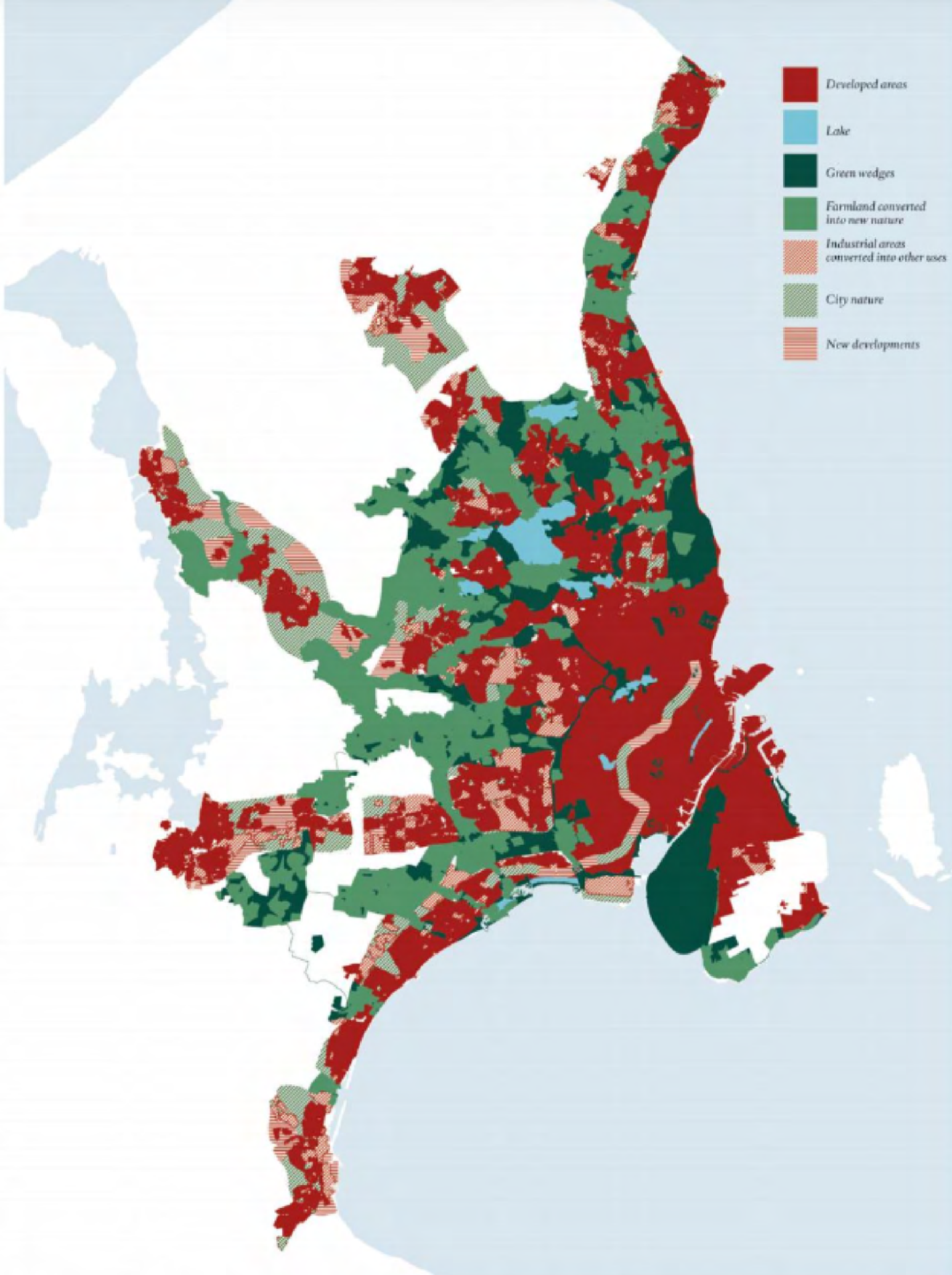
# Fingerplanen

Steen Eiler Rasmussen ja  
Christian Erhardt Bredsdorff

1947



- 1893
- 1933
- 1936
- 1941
- 1947
- 1948
- 1956
- 1957
- 1962
- 1974
- 1979
- 1984
- 2000
- luku



# SLA:n ehdotus vuoden 1947 mallin uudistamiselle

1. Yhteistyö
2. Uusi luonto
3. Kehitys
4. Houkuttelevat ympäristöt
5. Sitoutuminen



# Ørestad

- 1893
- 1933
- 1936
- 1941
- 1947
- 1948
- 1956
- 1957
- 1962
- 1974
- 1979
- 1984
- 2000 luku



Ørestad Nord

Fælled Kvarter  
Ørestad

Ørestad City  
Byparken

Ørestad Syd  
Mellemrummet



8 - House  
BIG

Mountain Dwellings  
BIG

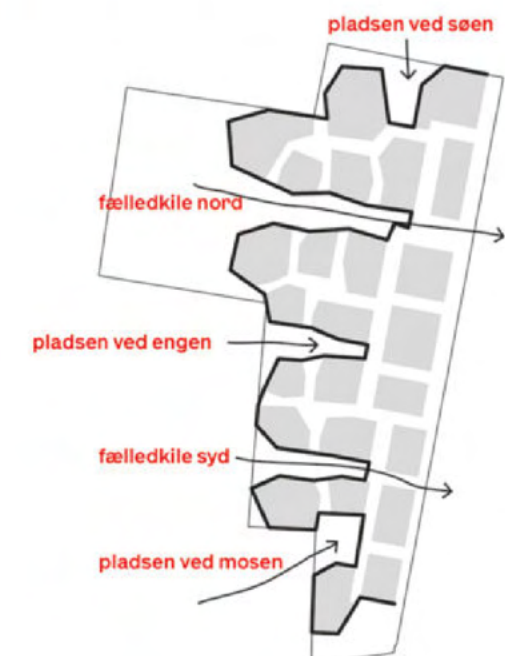


# Ørestad Nord



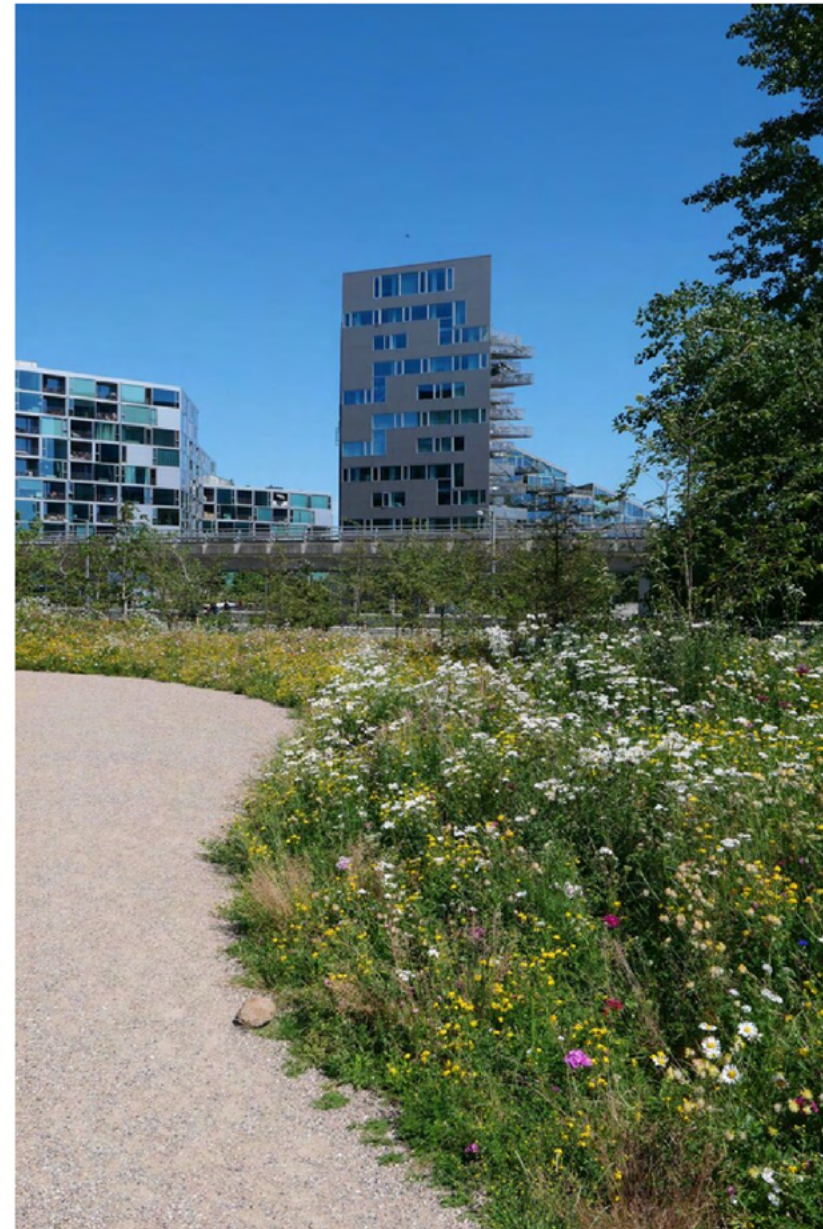


# Fælled Kvarter Ørestad



Ørestad City

# Byparken



# BYPARKEN



2003



2004



2005



2006



2007



2008



2009



2010



2011



2012



2013



2015



2016



2017

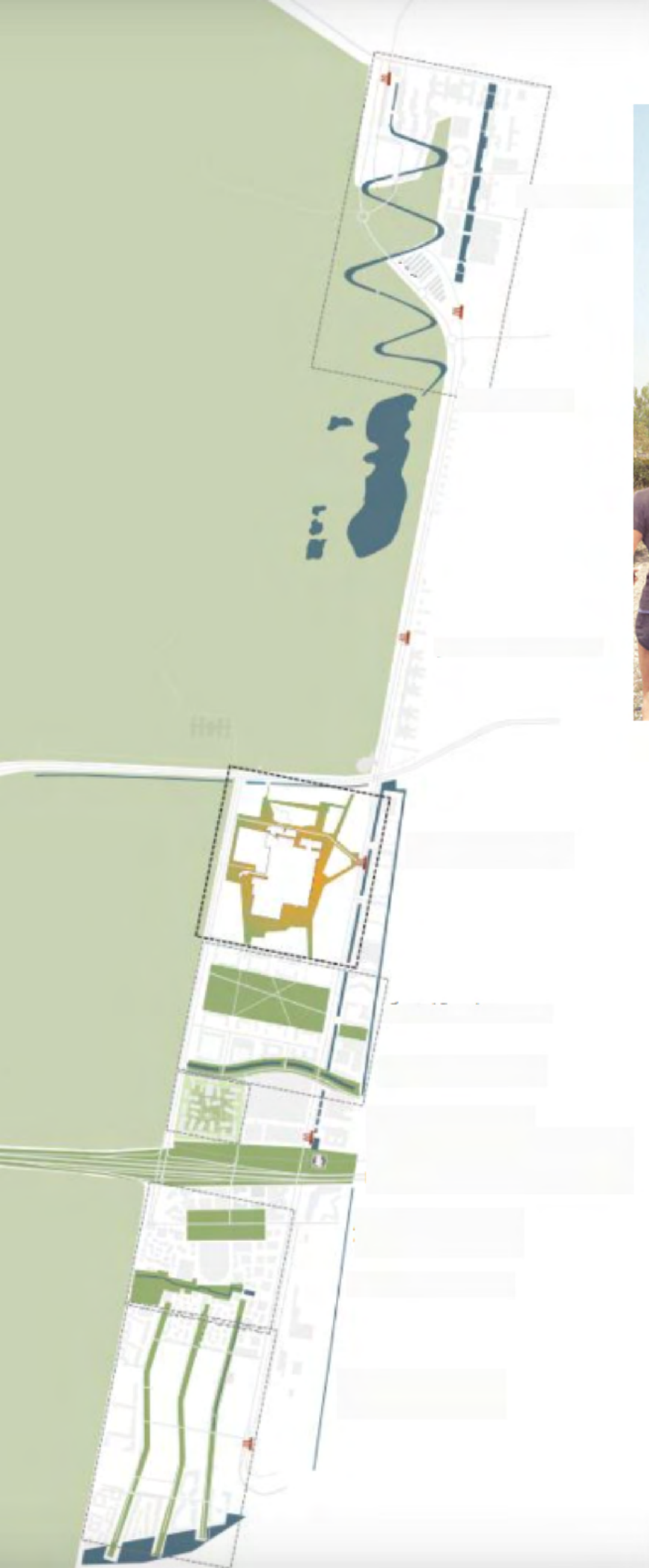


2018

## BYPARKEN I TAL

- Byparken er 70.000 m<sup>2</sup> stor. Til sammenligning er Ørstedsparken 65.000 m<sup>2</sup>.
- Der er mere end 30 forskellige træsorter.
- Byparken omkranses 1.800+ boliger.
- Der er 8 store aktivitetsøer, samt en række mindre park- og legecirklere.

# Ørestad Syd





Mellemrummet

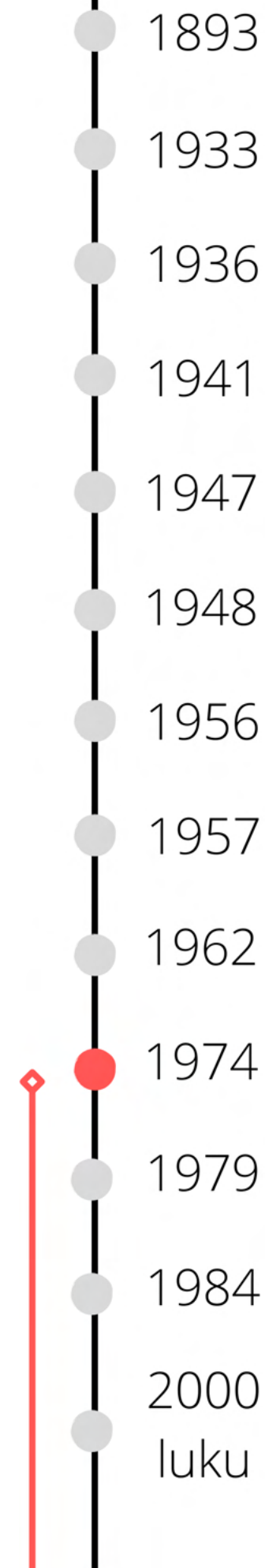






Bjarke  
Ingels  
1974

**BIG**





Ørestad,  
the Mountain



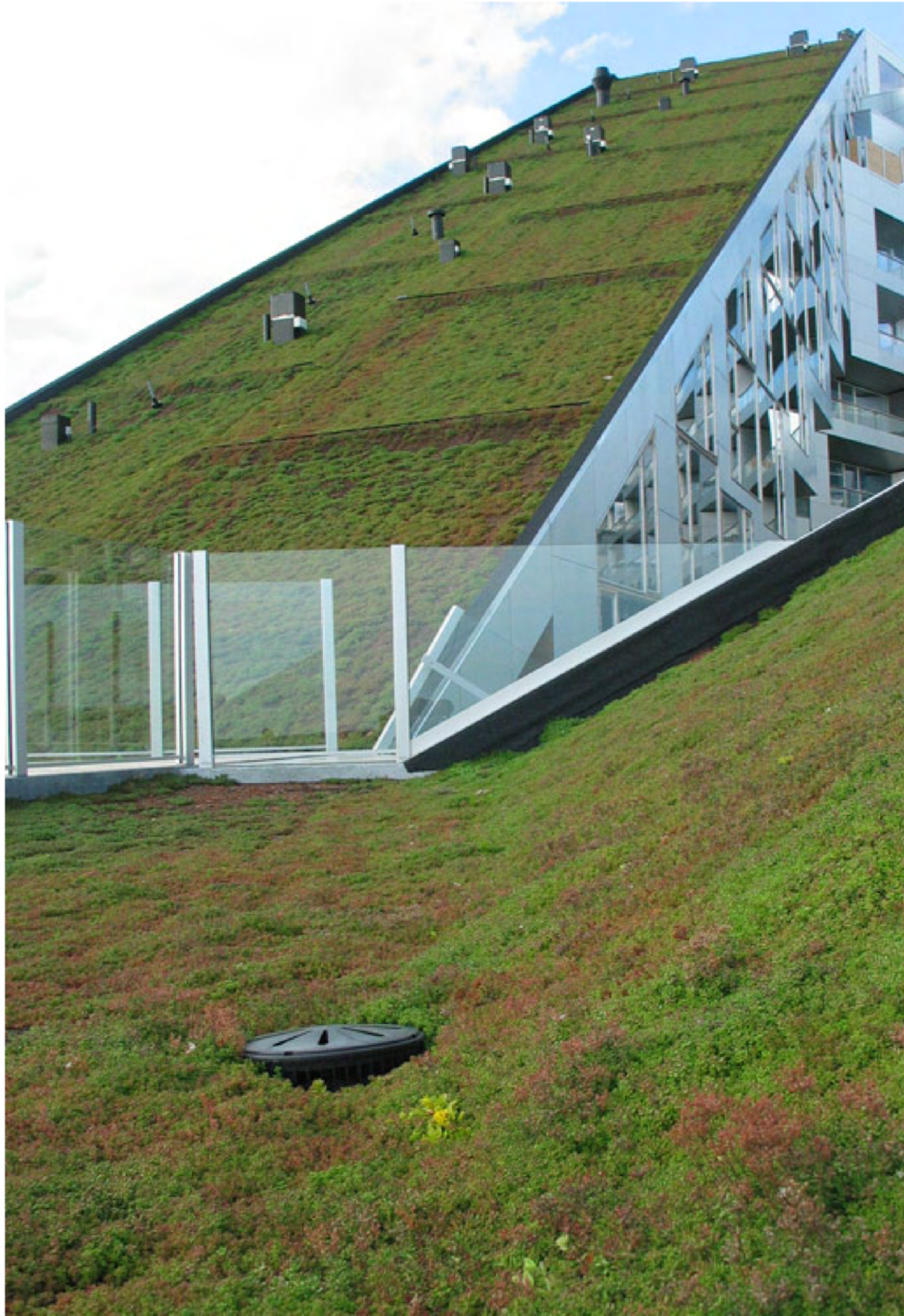


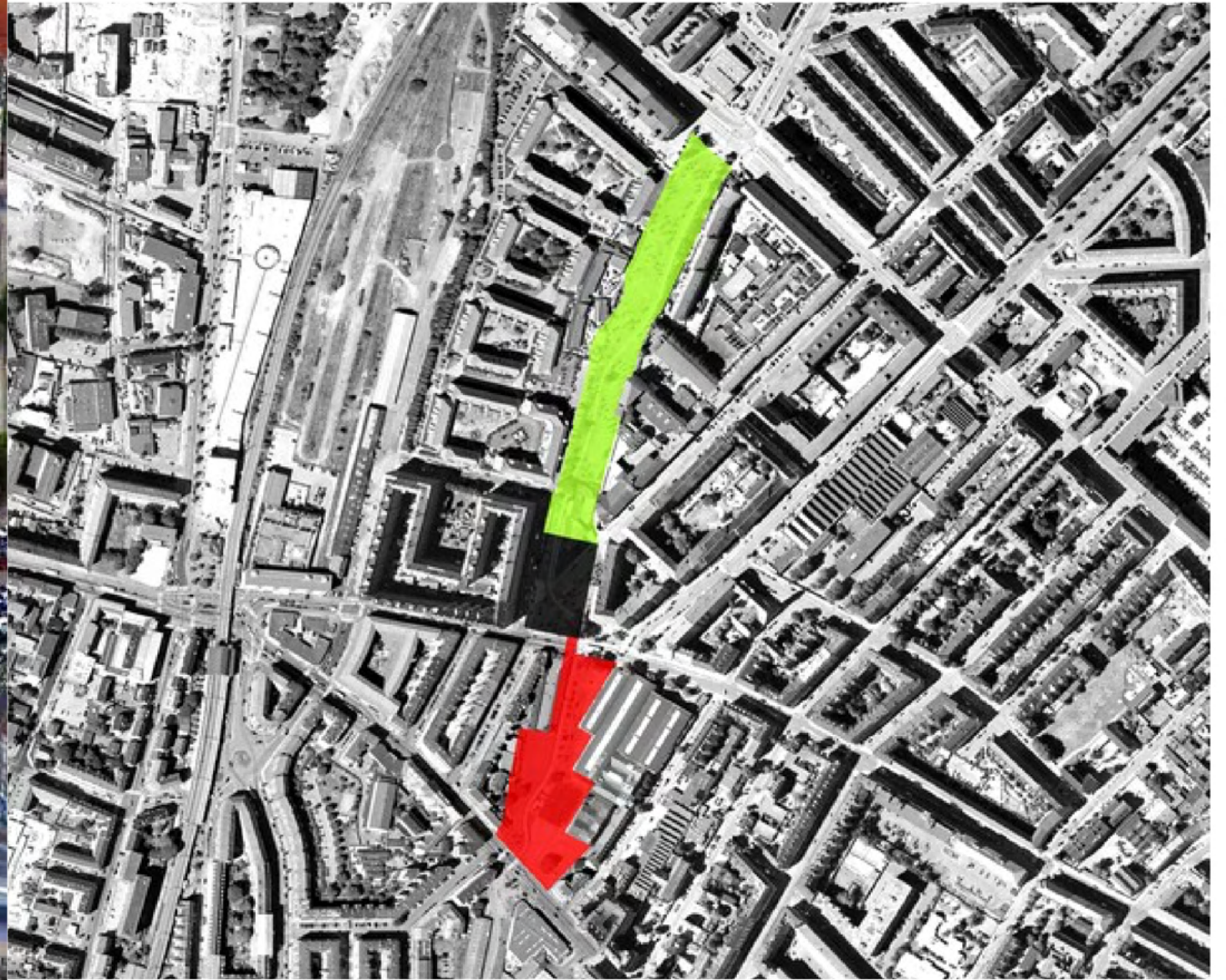
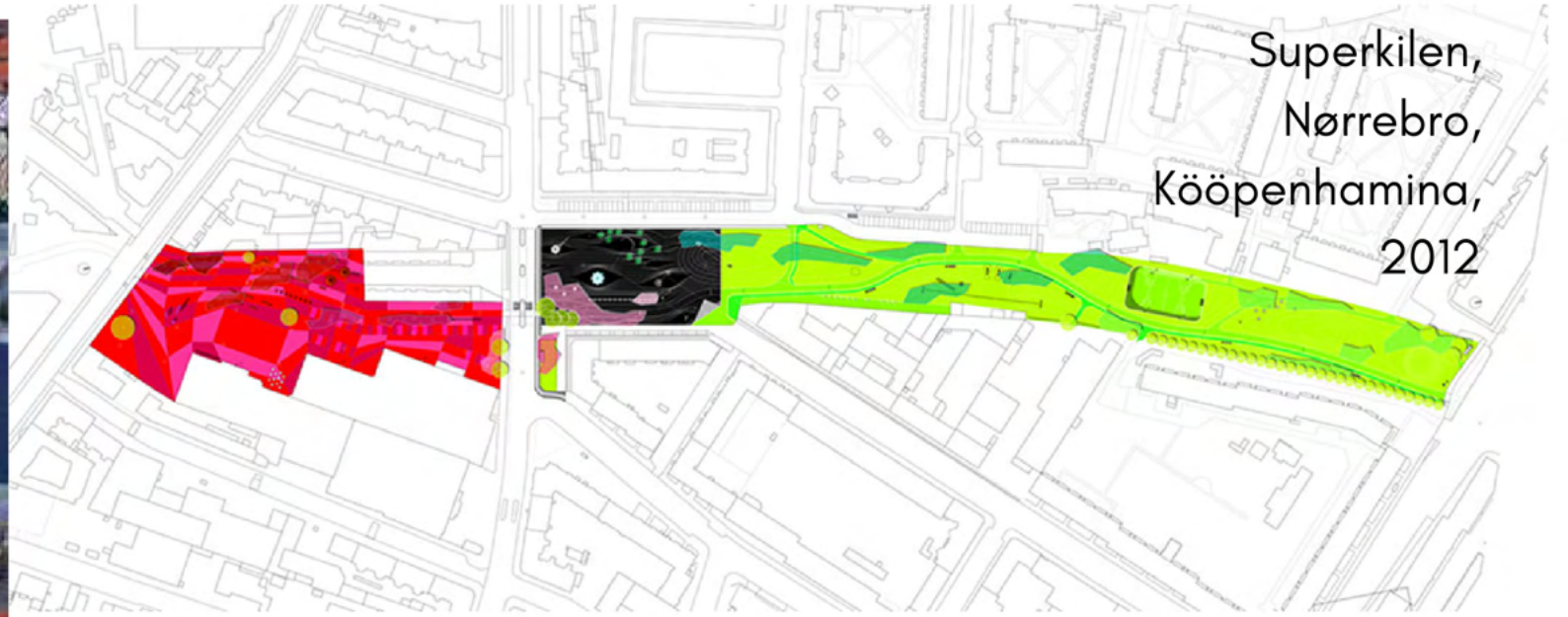




Ørestad,  
8 House









Jakkarat, São Paulo, Brazil.

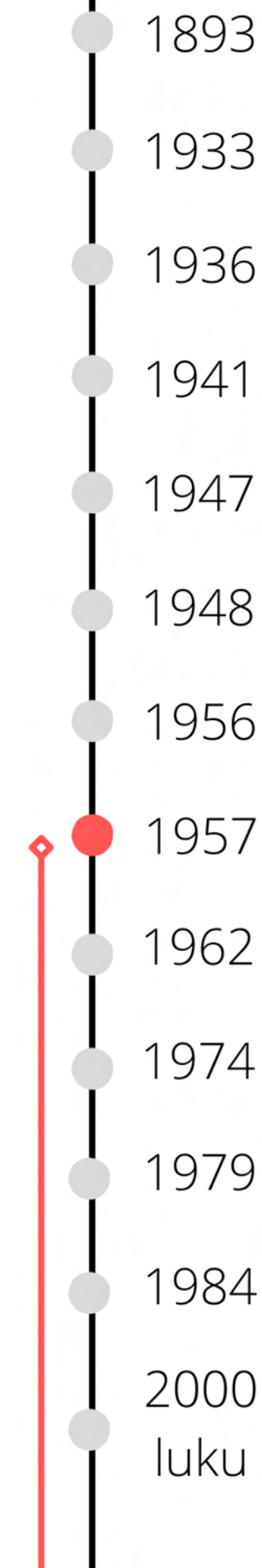


Pyöräteline, Suomi



# Stig Lennart Andersson

1957

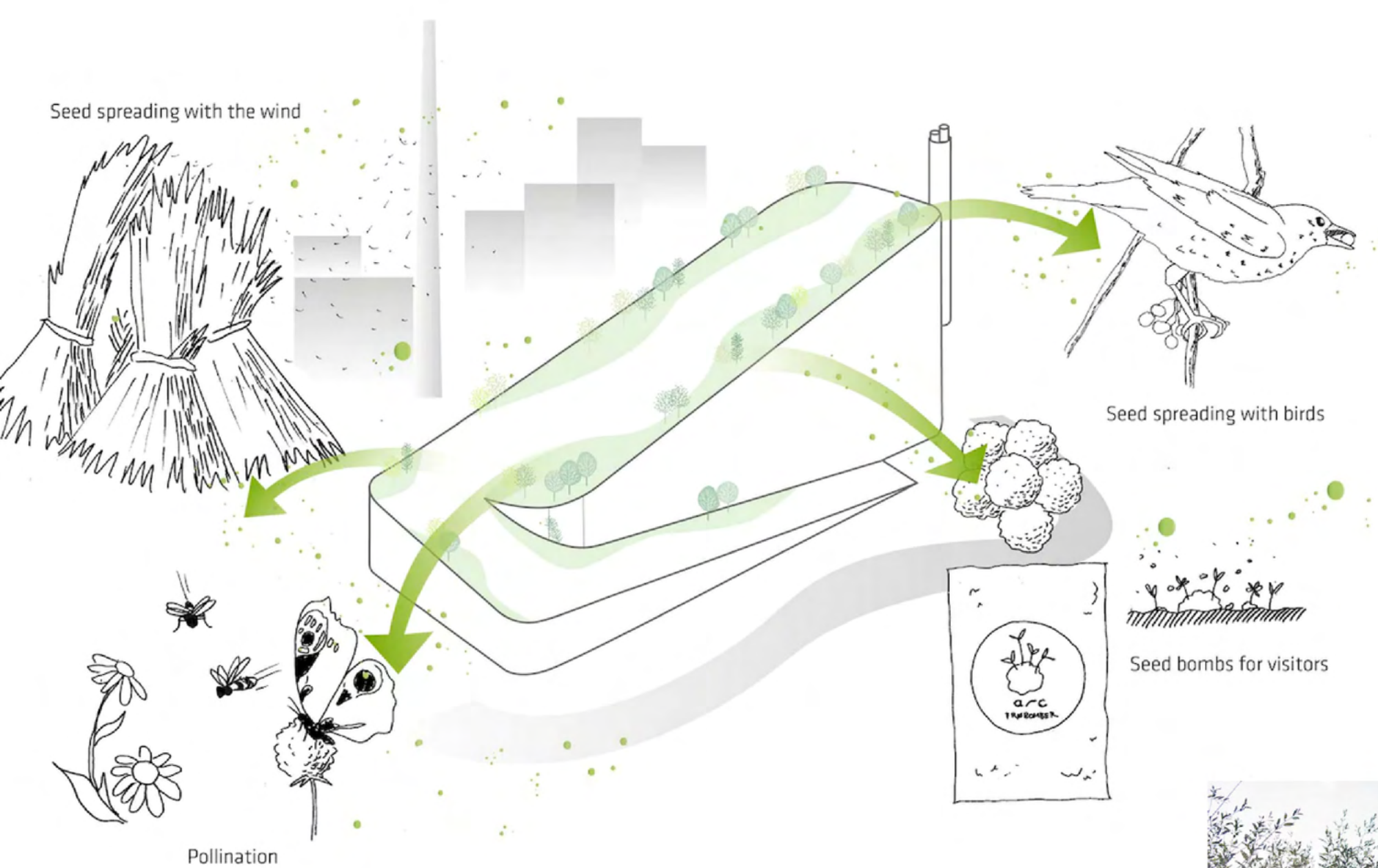




# Amager Bakke Rooftop Park

Kööpenhamina





Palkinnot:

2020 Design That Educates Award in the category 'Architectural Design'

2020 ArchDaily Building of the Year Award

2019 EcoTechGreen Award in the category 'Green Technology and Green Infrastructure'

2019 Scandinavian Green Roof Award





# Gellerup New Nature Park

Aarhus







# Lähteet:

## Historia

file:///C:/Users/35850/Downloads/SuoPo%20Postmodernismi%202020\_opt.pdf

<http://www.differencebetween.net/miscellaneous/politics/ideology-politics/difference-between-modernism-and-postmodernism/>

## Sørensen

<https://www.heartmus.dk/en/architecture-and-parks/architecture-and-parks/geometric-gardens.html>

<https://kub.ku.dk/biblioteker/frederiksberg/kulturarv/havetegninger/havetegninger-i-danmark/>

<https://landscapetheory1.wordpress.com/tag/carl-theodor-sorensen/>

<https://mgrarquitectura.com/en/the-circular-gardens-that-turn-landscaping-into-avant-garde-art/>

<https://www.pgpedia.com/s/carl-theodor-sorensen>

<https://alchetron.com/Carl-Theodor-Sorensen>

<https://www.kunstbib.dk/en/collections/architectural-drawings/samlingen?query=exact&q=S%C3%B8rensen%2C%20C.%20Th>

<https://www.kystlandet.com/coastal-land/plan-your-trip/vitus-berings-park-gdk678704>

<https://www.kunstbib.dk/en/collections/architectural-drawings/samlingen/000026830/1>

<https://www.cfmoller.com/p/Aarhus-University-campus-i2774.html>

<https://brightvibes.com/2357/en/the-story-behind-the-unique-oval-community-gardens-of-copenhagen>

<https://nayttelykeskusweegee.fi/>

## Fingerplanen

[https://issuu.com/sla\\_architects/docs/sla\\_finger\\_plan\\_proposal\\_english](https://issuu.com/sla_architects/docs/sla_finger_plan_proposal_english)

<https://www.re-thinkingthefuture.com/architects-lounge/a1509-10-conceptual-urban-designs-by-famous-architects/> [https://danishbusinessauthority.dk/sites/default/files/fp-eng\\_31\\_13052015.pdf](https://danishbusinessauthority.dk/sites/default/files/fp-eng_31_13052015.pdf)

## BIG

[www.scandinavian-architects.com/fi/projects/view/superkilen](http://www.scandinavian-architects.com/fi/projects/view/superkilen)

[www.arkitera.com/proje/superkilen/](http://www.arkitera.com/proje/superkilen/)

<https://worldlandscapearchitect.com/8-house-copenhagen-denmark-big/>

<https://superflex.net/works/superkilen>

<https://arquitecturaviva.com/works/parque-urbano-superkilen-3#>

<https://gehlpeople.com/projects/traelasten-aarhus-denmark/#>

<https://big.dk/#projects-mtn>

<https://www.dezeen.com/2008/02/17/mountain-dwellings-by-big/>

<https://www.architectmagazine.com/firms/bjarke-ingels-group-big>

## Gehl

[www.dki.lv/exhibition-changing-mindsets-jan-gehls-life-work/](http://www.dki.lv/exhibition-changing-mindsets-jan-gehls-life-work/)

[www.archdaily.com/877602/jan-gehl-in-the-last-50-years-architects-have-forgotten-what-a-good-human-scale-is](http://www.archdaily.com/877602/jan-gehl-in-the-last-50-years-architects-have-forgotten-what-a-good-human-scale-is)

[www.archdaily.com/801431/jan-gehl-5-rules-for-designing-great-cities](http://www.archdaily.com/801431/jan-gehl-5-rules-for-designing-great-cities)

[bikedenton.wordpress.com/2010/08/08/what-is-strøget-and-who-is-jan-gehl/](http://bikedenton.wordpress.com/2010/08/08/what-is-strøget-and-who-is-jan-gehl/)

[www.archdaily.com/tag/jan-gehl](http://www.archdaily.com/tag/jan-gehl)

[www.cladglobal.com/architecture-design-features?codeid=31599](http://www.cladglobal.com/architecture-design-features?codeid=31599)

[gehlpeople.com/story/](http://gehlpeople.com/story/)  
[gehlpeople.com/projects/traelasten-aarhus-denmark/](http://gehlpeople.com/projects/traelasten-aarhus-denmark/)

[www.architectmagazine.com/design/urbanism-planning/jan-gehl-copenhagen-and-the-trajectory-of-city-planning\\_o](http://www.architectmagazine.com/design/urbanism-planning/jan-gehl-copenhagen-and-the-trajectory-of-city-planning_o)

[www.slideshare.net/theurbanvision/lsp-copenhagen-malmo-gehl-architects](http://www.slideshare.net/theurbanvision/lsp-copenhagen-malmo-gehl-architects)

[https://issuu.com/gehlarchitects/docs/issuu\\_990\\_chongqing\\_pspl/4](https://issuu.com/gehlarchitects/docs/issuu_990_chongqing_pspl/4)

<https://www.pps.org/article/jgehl>

<https://gehlpeople.com/shopfront/life-between-buildings-1971-orig/>

<https://gehlpeople.com/wp-content/uploads/2018/09/Quality-Criteria-2018.png>

<http://www.dreamideamachine.com/?p=61449>

<https://gehlpeople.com/story-article/life-between-buildings/>

<https://gehlpeople.com/news/great-news-favrholm-masterplan-adopted-by-hillerod-city-council/>

## SLA

<https://www.architectsnotarchitecture.com/halloffame/stig-l-andersson/>

<https://www.sla.dk/cases/amager-bakke/>

<https://www.sla.dk/cases/gellerup-new-nature-park/>

## Ørestad

<https://www.visitcopenhagen.com/copenhagen/neighbourhoods/where-copenhagens-urban-jungle-meets-its-savannah>

<https://www.wonderfulcopenhagen.com/wonderful-copenhagen/international-press/orestad-urban-nature-and-world-class-architecture>

<https://www.opland.eu/projekter/groenningen-oerestad-nord/>

<https://vandkunsten.com/projects/orestad-faelled-kvarter>

<http://danishdesignreview.com/kbhnotes/2020/6/26/city-park-in-restad>  
<https://byoghavn.dk/wp-content/uploads/pdf/fotocollage+byparken+10+r.pdf>

<https://joanalomar.com/portfolio/orestad-syd-masterplan/>

<https://landezine.com/mellemrummet/>