

ALLAS SEA POOL Helsinki



The logo for BLUET, featuring a stylized blue wave icon above the word "BLUET" in a blue, sans-serif font.

The logo for MARINETEK, featuring the word "MARINETEK" in a bold, white, sans-serif font with a yellow arrow pointing to the right.

Location

- In the heart of Helsinki
- At Market Square by the Presidential palace
 - Site is open to west, catches the sun
 - In ship harbour
- Challenging location, ships move ice chunks around
 - Large cruise liners and smaller ferries
 - Lot of tourists
 - By the ferries wheel
- Amenities on-land: sauna, restaurant, sunbathing, view points, etc.









Numbers

- 83 by 33m platform, 2740 sqm
- 10 000 clients capacity per day in whole area with land facilities
 - The swimming pools are designed for 3000 clients per day
 - Fresh water pool 25x16x1,65m
 - Kids freshwater pool 17x11x0,55m
 - Fresh water pools are heated and year-round use.
 - Seawater pool 25x11x1,8m.



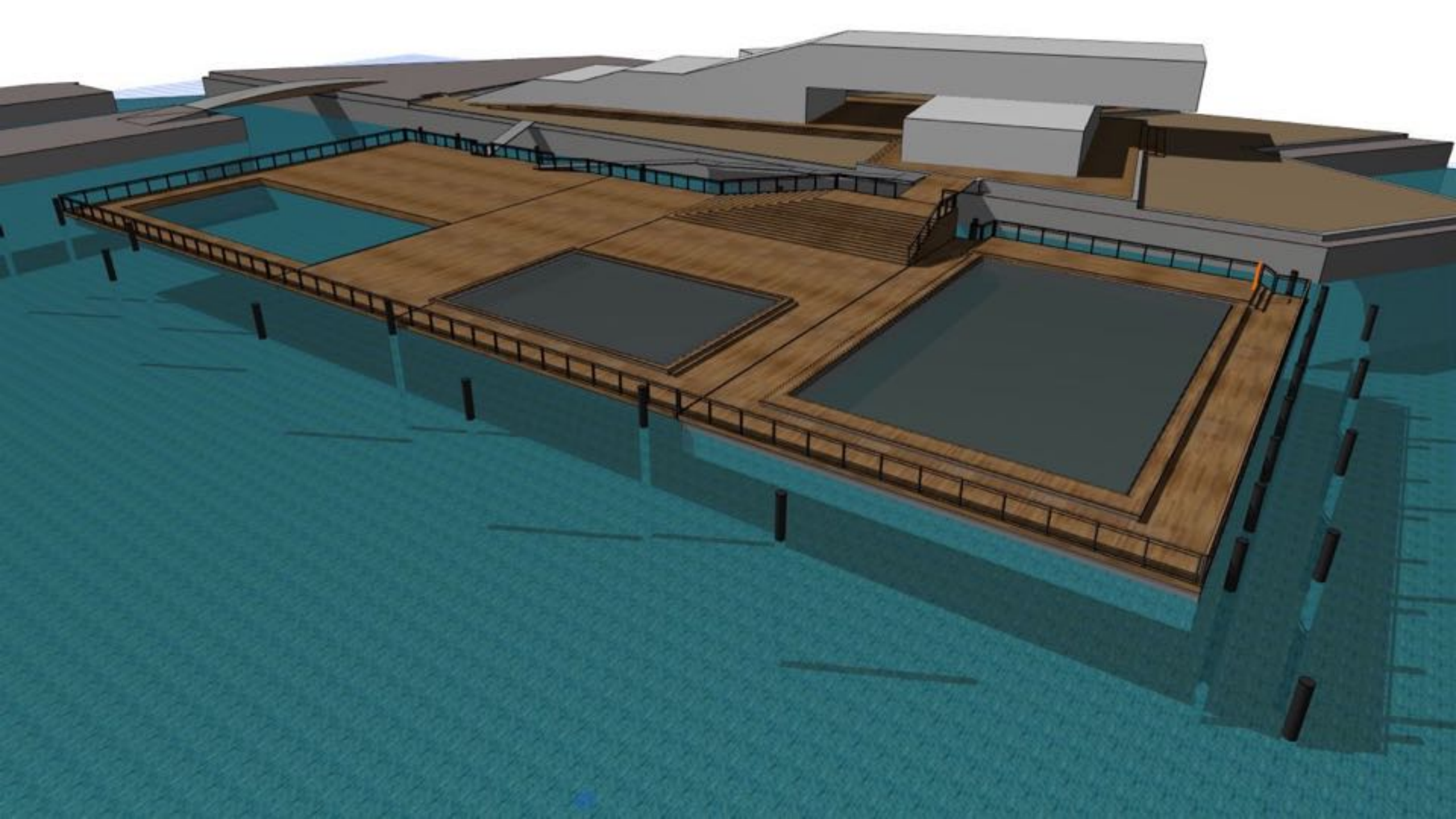


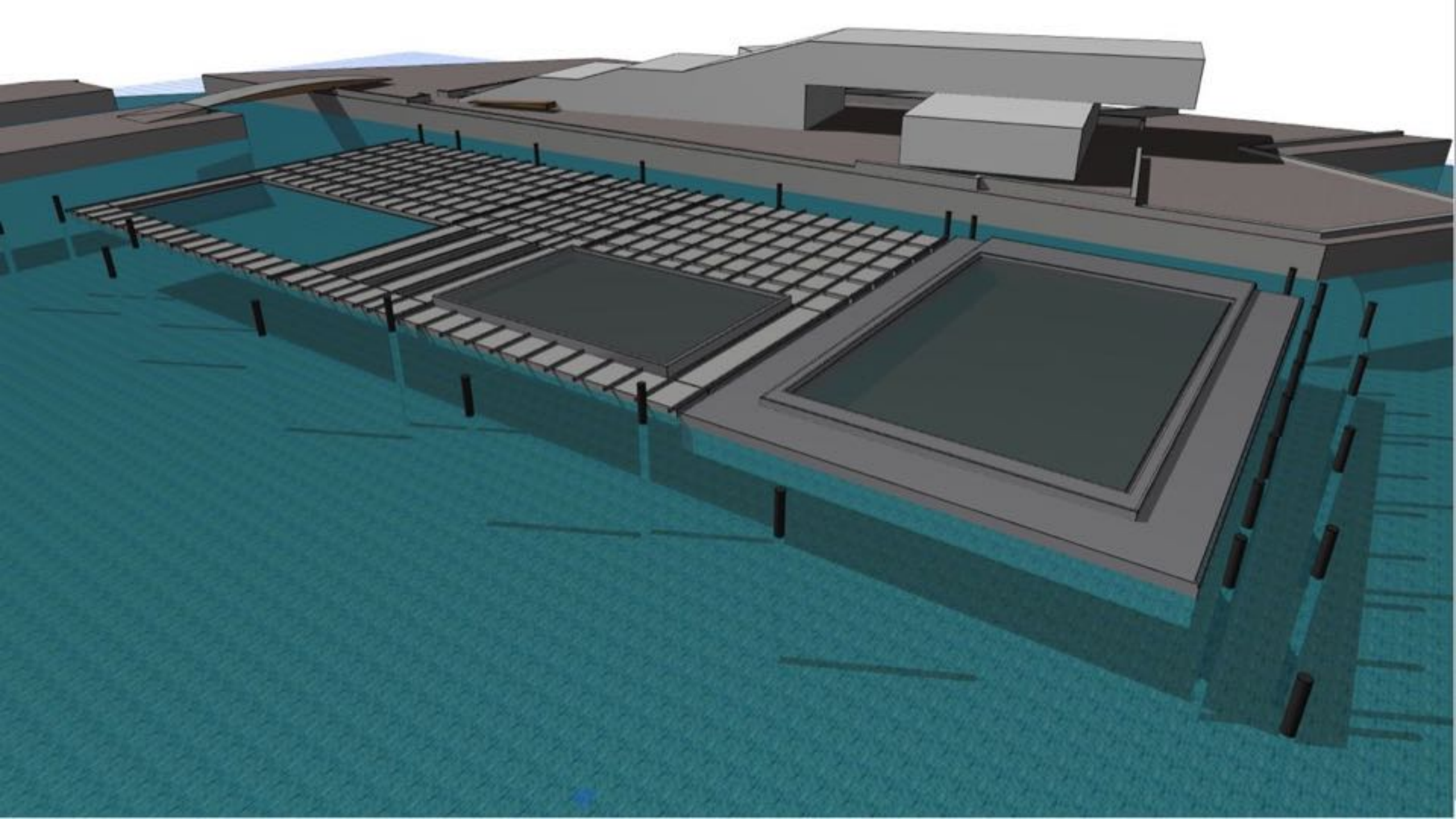




Design work & team

- Started in 2013
- 15+ versions before final shape agreed
 - Xxxx hours of work
 - Mr Rantanen as Project lead
- Architects Timo Urala and Pekka Pakkanen
- Design supervision & Site manager Kimmo Saharinen
 - Project engineer Petteri Sutela
 - Lead structural designer Jussi Boman
- Structural design: Alex Brink, Pertti Hyppönen, Karri Esala





Piling, safety- and ice-wires

- 5 to 8 meter depth in harbour
 - 300mm steel piles
 - Pileguides are adjustable
- Safety piles and –wire towards ferries on west side
- Ice piles and –wires towards south for ice chunks
- Design lifetime of the concrete pontoons is 50 years, nearly maintenance free









Main platform

- 41 AC-pontoons
 - HDG steel frame, c/c 2000
- Wood beams c/c 400, wood decking
 - The structure is semi-flexible
 - Moving joints
 - Steps structure is HDG steel
- Technical room under steps, module structure
 - Pre-fabricated galvanized steel frame
- All drillings, fastenings, loads etc. are pre-engineered









Barge structure

- This is impressive
 - Fresh water pool structure
- A ship, built in drydocks in Finland
- 22x33m size, wider was not possible
 - Welded steel structure
 - Epoxy coated
 - Pool polyurea coating
 - Full of water treatment tech
- Latest pool technology, eg. membrane filtration system









Seawater pool structure

- AISI 316L steel
 - Plastic grates
 - Plastic pool liner
- Seawater inlets in bottom
- Seawater flows over edges (water circulation)
 - The water is filtered and UV treated







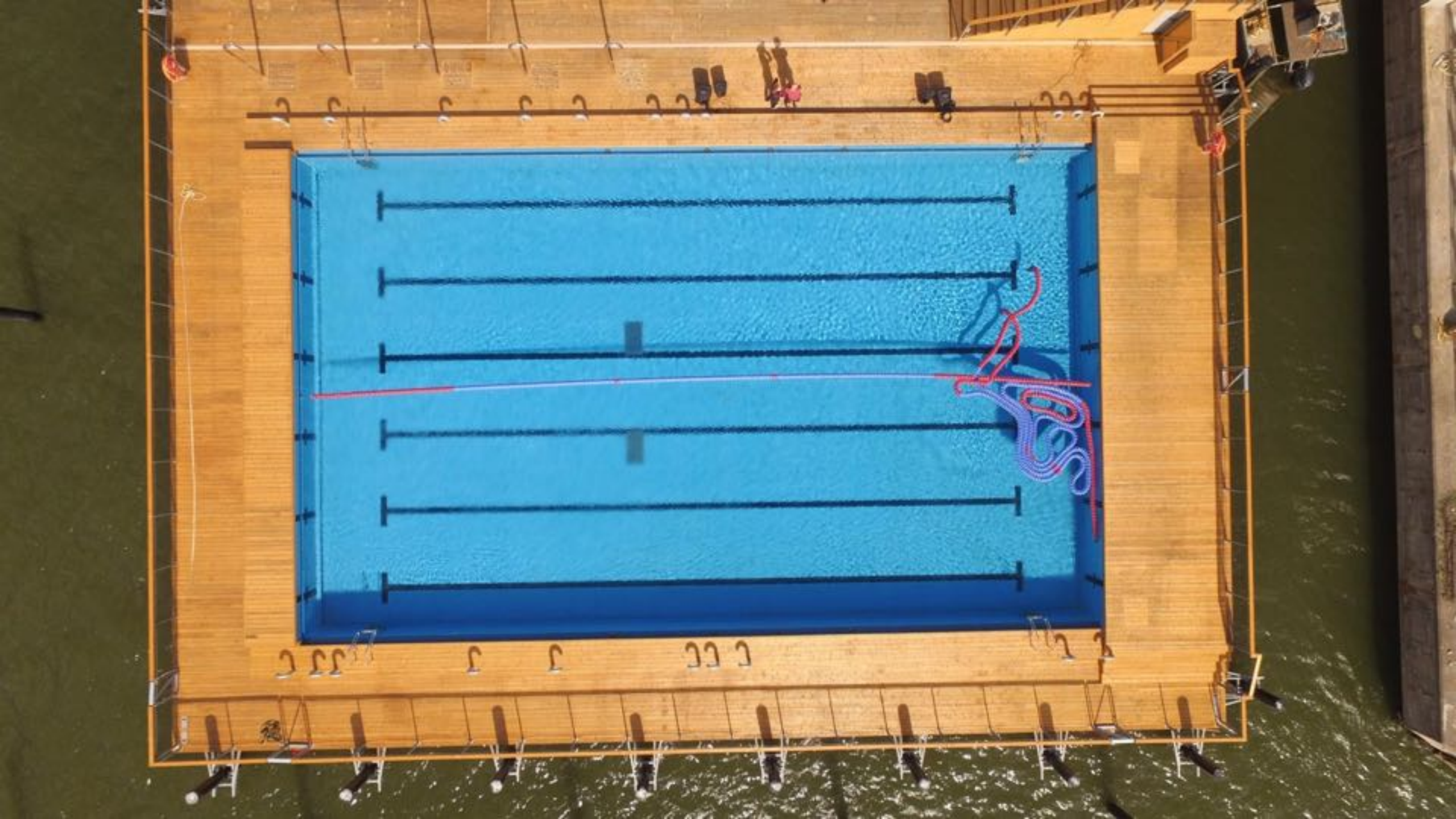


Swimming water treatment

- Machine room inside barge, a must see!
- Complicated and sophisticated machinery
 - Impressive use of space inside barge
 - Pools heated, year-round use
 - The seawater pool is cleaned seawater
- Seawater machinery is under the platform steps
 - Seawater is cold as in surrounding sea
- Seawater gets icy in winter, can be used for winter swimming









Use of ALLAS

- The whole ALLAS Sea pool area contains on-land structures and spaces
 - Year-round use
 - Restaurant
 - Baltic Sea-center
 - Saunas
 - Dressing rooms
 - Activity spaces
 - Showroom, Marinetek along
 - Cleantech
 - Outdoor areas
 - Floating platform with pools









It's ready!

- August 2016 all ready for use

















PROUDLY BUILT BY

MARINETEK



IN COOPERATION WITH

MARINETEK 