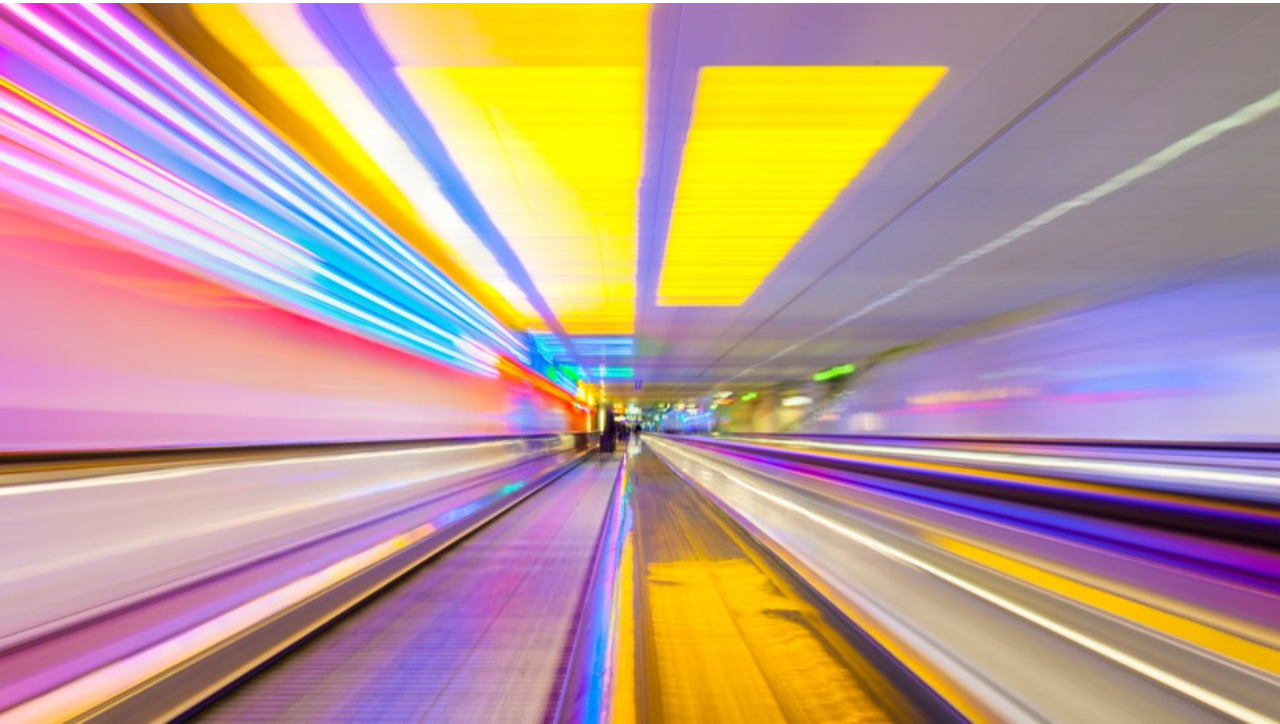


Master's Programme in Urban Mobility

Orientation meeting

27 Aug 2024
Miloš Mladenović
Aino Roms
Stefano De Luca



Agenda



Introductions

**Overview of
your studies &
immediate to-
do-list**

**Planning your
studies &
registering to
courses**

**Questions &
concerns**

**Continuing
to the SPT
Meeting**



Introductions

Aalto culture in brief

- Focus on students and learning – We are here for you
- Low hierarchy in and outside the classroom (e.g. communication)
- (Academic) freedom vs. responsibility (transparency of information)
- Student community & synergy with the university
- Sources to check
- Check also
 - [Finland Studies MOOC](#)
 - [Finland Works MOOC](#)
 - Beat the Blues event series for international students (about culture, culture shock, wellbeing etc) – follow our newsletters!
 - [Guide for International Students](#)
 - [Code of Conduct](#)



Aalto University
School of Engineering



Your support team



Planning Officer
Aino Roms



Coordinator
Stefano De Luca



Prof. Miloš
Mladenović

How about you?

Overview of your studies & immediate to-do-list

SUMT Learning Objectives

- A holistic approach in study, design, development and evaluation of mobility systems as part of a sustainable, inclusive, and resilient urban environment
- Identify, formulate and deal with complex challenges using systems thinking
- Broad knowledge of theories and concepts in urban planning and transport as well as innovation and entrepreneurship
- Critical and creative thinking beyond disciplinary boundaries
- Teamwork and collaboration with various actors

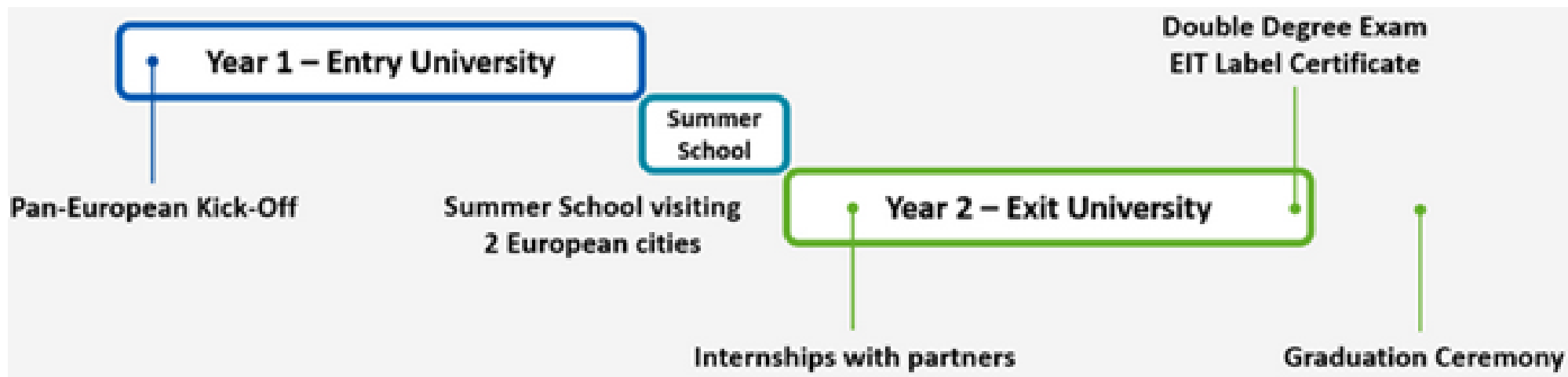


SUMT Structure

- Major studies \geq 60 ECTS
- Innovation and Entrepreneurship studies \geq 30 ECTS
(note the slightly different amount of ECTS at each university!)
- Min. 60 ECTS per each year / university
- Master's Thesis = 30 ECTS

**Student Guide ->
Curriculum**

<https://www.aalto.fi/en/programmes/masters-programme-in-urban-mobility/curriculum-2024-2026>



Compulsory foreign language course

- Degree requirement at Aalto: 3 ECTS of foreign language (i.e. other than Finnish or Swedish), oral and written requirements, B2 level or higher
- How to complete this?
 - **Entry students:** LC-1317 Integrated Project Communication for MSc Students (o,w) = mandatory I&E course in the spring term, connected to TU-E4101 Entrepreneurship Lab in the spring term
 - **Exit students:** LC-1310 Academic Communication for MSc students (o,w), groups H03 or H05 (priority for double degree exit students; other groups ok too! Enrol by 4.9.)
 - **KTH entry + Aalto exit:** possibility for exemption if you have completed AK2038 Theory and Methodology of Science with Applications (Social Science) → choose more optional courses instead
 - Check the model schedules at <https://www.aalto.fi/en/programmes/masters-programme-in-urban-mobility/planning-your-studies> - or play with Sisu
- Studying Finnish?
 - Strongly recommended, but as extra (not included in the degree due to recognition issues with partner universities)


Things to take care of ASAP

- Signing the attendance list today (“enrolment” to EIT UM Master School)
- Registering to courses beginning in period I
- Getting a Finnish personal ID → inform us when you do
- Opening a bank account (scholarship holders)
- Choosing and timing optional courses
- Having a plan for completing compulsory language course
- Paying student healthcare fee or applying for exemption

Tips – how to succeed in all this

- Ensure a good start for your studies
- Prepare to study full-time
- Follow the curriculum and your Personal Study Plan (PSP)
- Follow the universities' regulations
- Always attend the first lecture of the course
- Don't be left alone, there are always people here to help you
- Be an active respondent to any feedback surveys sent to you
- **Take care of your study ability <3**





Planning your studies & registering to courses

Planning your studies – how?

- **Curriculum & degree structure = what** you have to and can include in your degree
 - Programme page in Student Guide
- **Personal Study Plan (PSP; HOPS in Finnish) = how** you plan to do this
 - Sisu (sisu.aalto.fi)
 - Registration to courses is done via PSP
 - **“Your best plan to graduate for the time being”** – can be modified at any time
 - Play with the PSP to plan your workload per teaching period / semester
 - Also a tool used to apply for graduation at a later stage
- **Help with personal study plan?**
 - Book an individual appointment with Aino or Stefano in MyStudies



Courses to register in period I (entry)

Compulsory SUMT courses	ECTS	Period
SPT-E1022 Foundations of Plangineering	5	I
SPT-E1030 Planning Theory D	5	I - II
Optional SUMT courses (if you choose this)		
SPT-E1011 Planning Systems	5	I-II

5 ETCS of the following I&E courses	ECTS	Period
TU-C2090 Starting Up	1	I-II*
TU-C2080 Entrepreneurship Essentials	1	I-II*
TU-C3070 Good Life Engine: Connecting to Self and Community	3	I-II or III-V
TU-E4040 Opportunity Prototyping	3	I

Model schedules at <https://www.aalto.fi/en/programmes/masters-programme-in-urban-mobility/planning-your-studies>

* Online self-study course, can be completed at any time


Courses to register in period I (exit)

Optional SUMT courses (of total 13 ECTS to be completed)	ECTS	Period
REC-E3200 Institutions in Real Estate Economics D	6	I
SPT-E1011 Planning Systems	5	I-II
SPT-E1022 Foundations of Planning	5	I
REC-E3100 Real Estate Economics D	6	I
AAE-E1000 Introduction to Advanced Energy Solutions	5	I - II

Optional I&E courses (total 3 ECTS to be completed)	ECTS	Period
LC-1310 Academic Communication for Msc students**	3	I-II
TU-C3070 Good Life Engine: Connecting to Self and Community	3	I-II
TU-E4040 Opportunity Prototyping	3	I

** See slide 10 (Compulsory Language Course)

Model schedules & bundle examples at
<https://www.aalto.fi/en/programmes/masters-programme-in-urban-mobility/planning-your-studies>

A photograph of three students sitting around a white table in a study area. A woman on the left is looking at a laptop. A woman in the middle is pointing at a document. A man on the right is looking at the document. The background shows a teal wall and other study desks.

**Booking
appointment with
Stefano or Aino to
revise study plan
(and relieve any
doubts and
questions)**

MyStudies
mystudies.aalto.fi/

Who to contact and when?

**Course
teacher**

**Course
registration,
assignments,
exams, missing
lectures**

Milos

**Curriculum
exceptions,
academic
advising, thesis**

Stefano
(jointmasters-
eng@aalto.fi)

**Study plan
matters, thesis
process and
deadlines,
graduation,
progress of
studies,
general worries**

**Master
School**

**Scholarships,
insurances,
Master School
events**

Other

**Mental health
challenges → Staring
Point of Wellbeing,
Aalto psychologists or
FSHS**

**Career design and job
search → Aalto Career
Services**

**Aalto IT account → IT
services**

**Housing → Your
landlord / housing
provider**

ETC ☺

Modes of communication



The screenshot shows the Aalto University student portal. At the top left is the Aalto logo. The navigation bar includes: Home, Appointments, Advisory Notes, Success Team, Tasks, Courses, Services, and a search bar. A yellow banner at the top right contains the text "Welcome Hello Sophia Student!". Below the banner are seven numbered callouts: 1 points to "Appointments", 2 to "Advisory Notes", 3 to "Success Team", 4 to "Tasks", 5 to "Courses", 6 to "Services", and 7 to the search bar.

- General study related concerns jointmasters-eng@aalto.fi → Stefano (and Aino)
- Study guidance appointments via Student Success Hub > My Success Team (Stefano and Aino)
- Teams → Milos
- Email → teachers & other professors



EIT Urban Mobility MSc ...



New students added ASAP ^^

Upcoming events

- save the date!

- How to prepare for a Career Fair - training for international students, 12 Sep, 8:30 am ([please pre-register here](#)) (exit students)
- Post-disorientation meeting for UM students 13 Sep, 10 am (Otakaari 4, room 202)
- [Velo Finland, 25-27 Sep](#)
- [Aalto Thesis Day, 2 Oct](#) (exit students)
- EITUM Kick-off in Tartu, 17-18 Oct (entry students)
- [ENG Student & Alumni Networking Event, 23 Oct](#) (entry & exit)
- Aalto Talent Expo, 2 Nov <https://www.aalto.fi/fi/talent-expo>
- SLUSH, 20-21 Nov, <https://slush.org/volunteers/>
 - Apply to be a volunteer, DL 8 Sep
- **Guild & student club events & excursions – check with your tutor!**



Make use of
these events to
build networks

Questions or concerns?

See you at latest at the Post-(dis)-orientation meeting on 13 September!

A!

**Kiitos
aalto.fi**