

## POSSIBLE DART POSITIONS, KEEPING THE WAIST DART IN ITS NORMAL POSITION

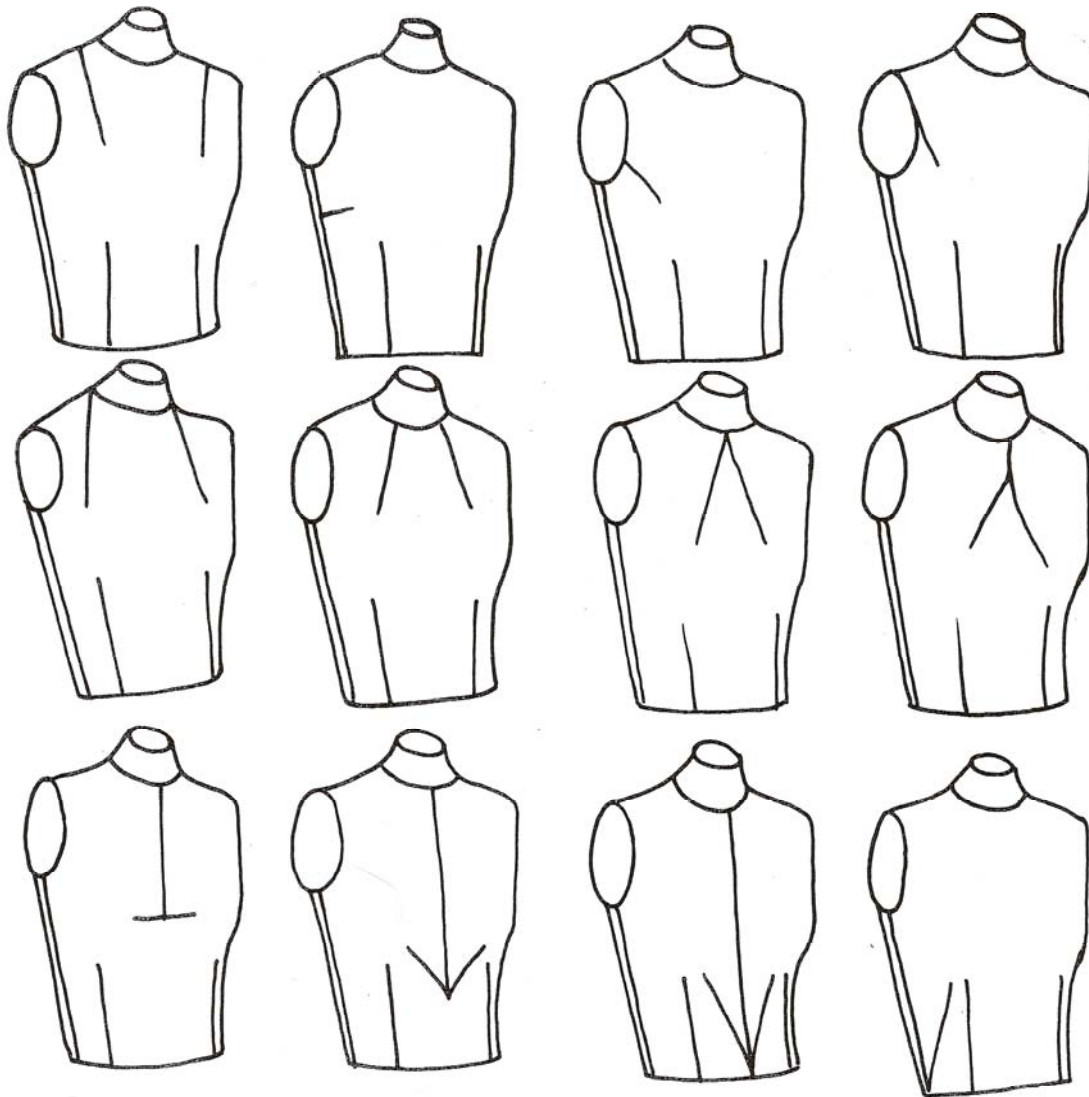


Fig. 4.14 Possible dart positions.

Fig. 4.14

Keeping the *waist* dart in its normal position, move the excess round the outer edges to produce a different design. The darts shown above may be run into each other over the bust point to form seam lines which can be straight or curved as illustrated in Fig. 4.15.

Making darts into seam lines

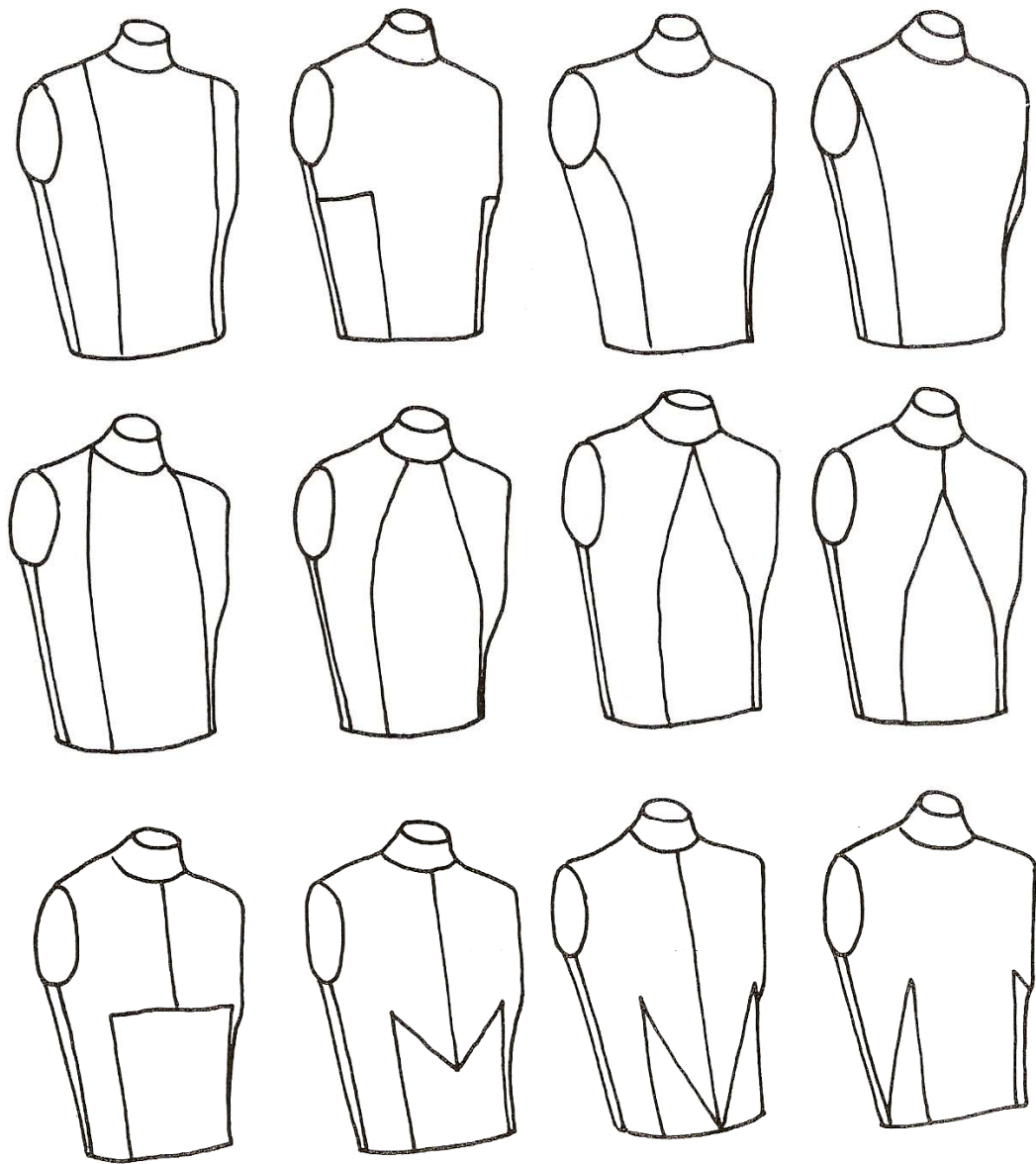


Fig. 4.15 Making darts into seam lines.

EXTRA DARTS OR TUCKS

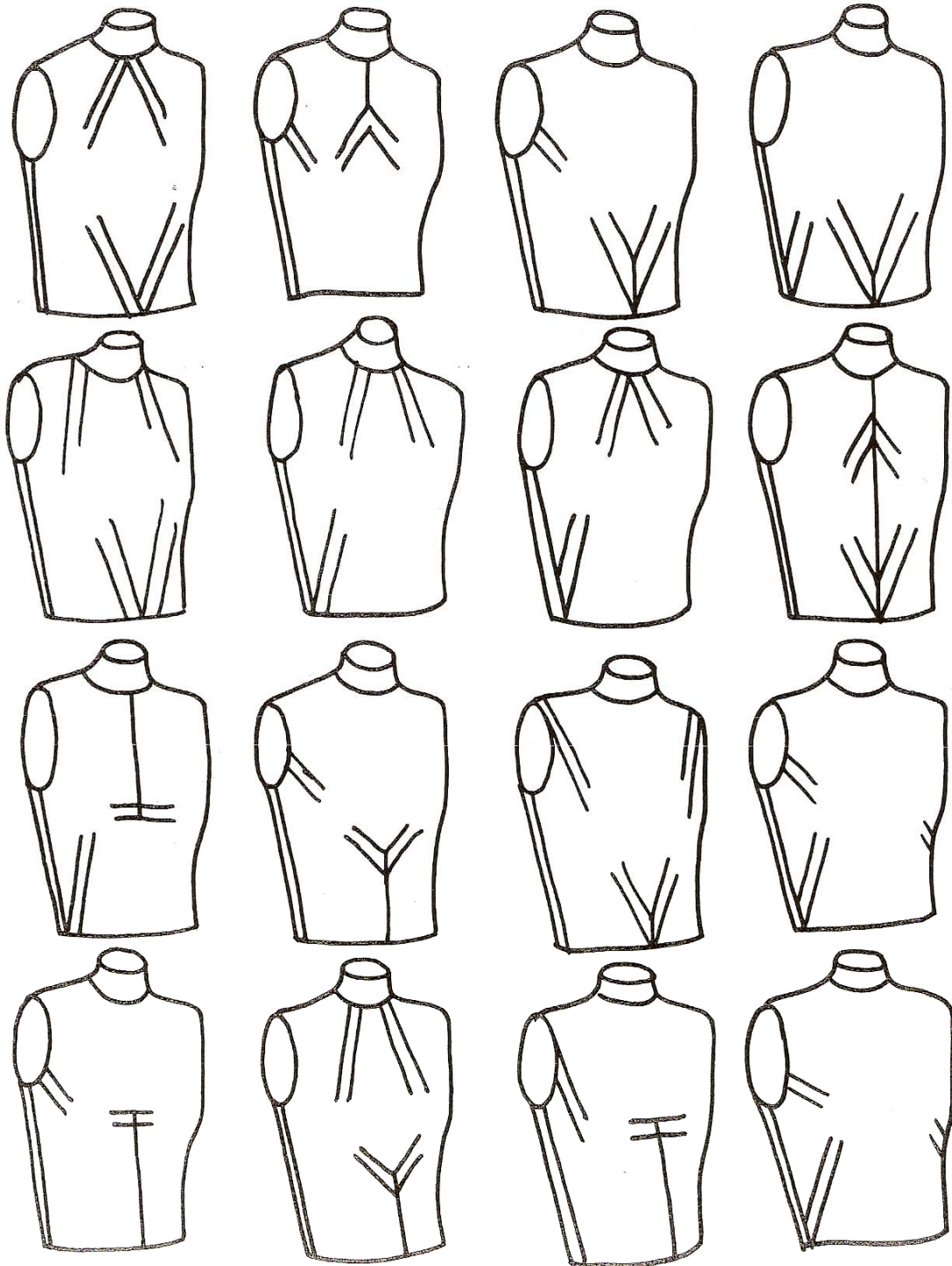


Fig. 4.22 Extra darts or tucks.

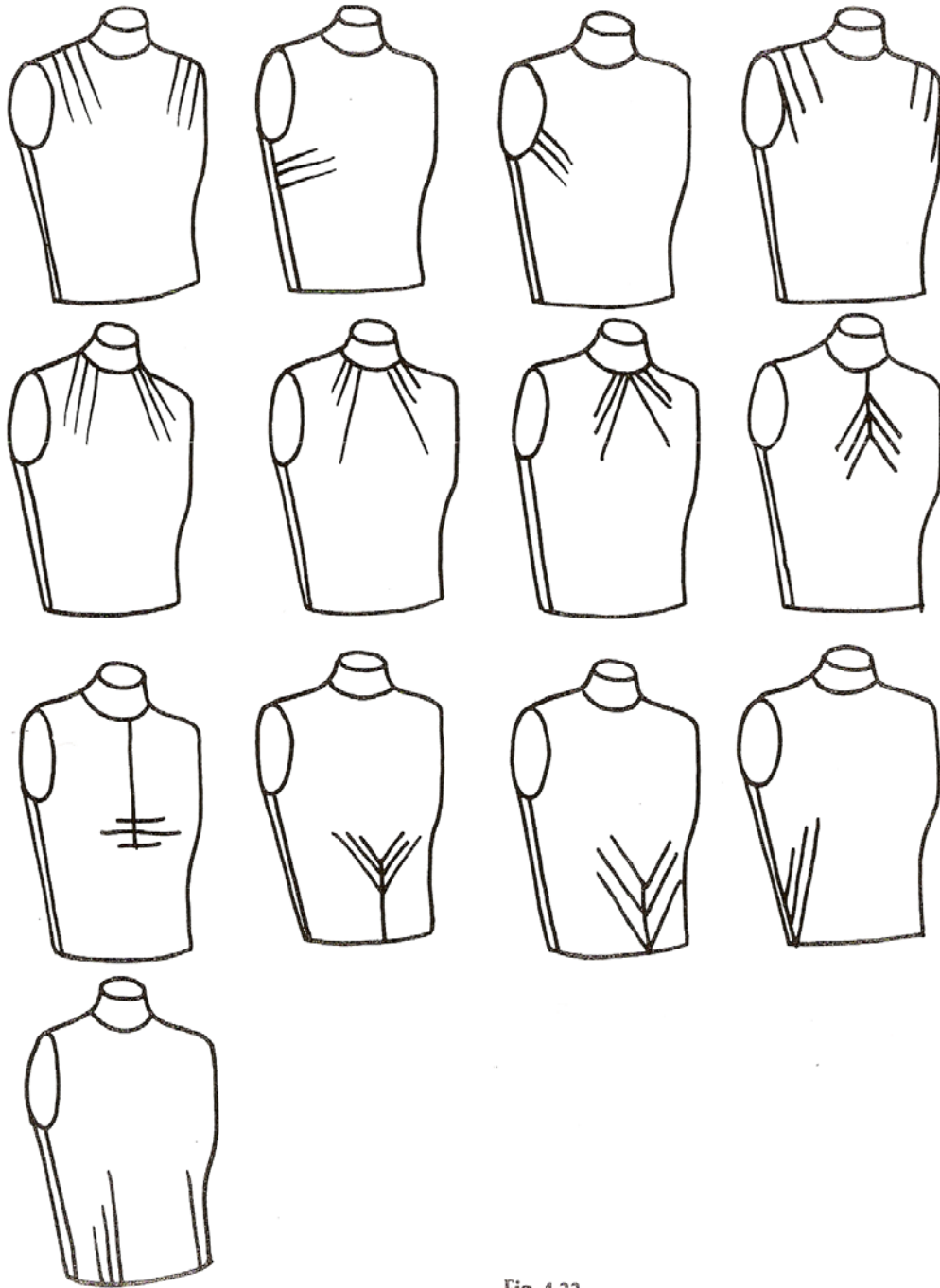


Fig. 4.22 Extra darts or tucks (cont.)

Fig. 4.22  
Excess fabric may be smoothed into extra dart positions instead of just two.

Making darts into seam lines

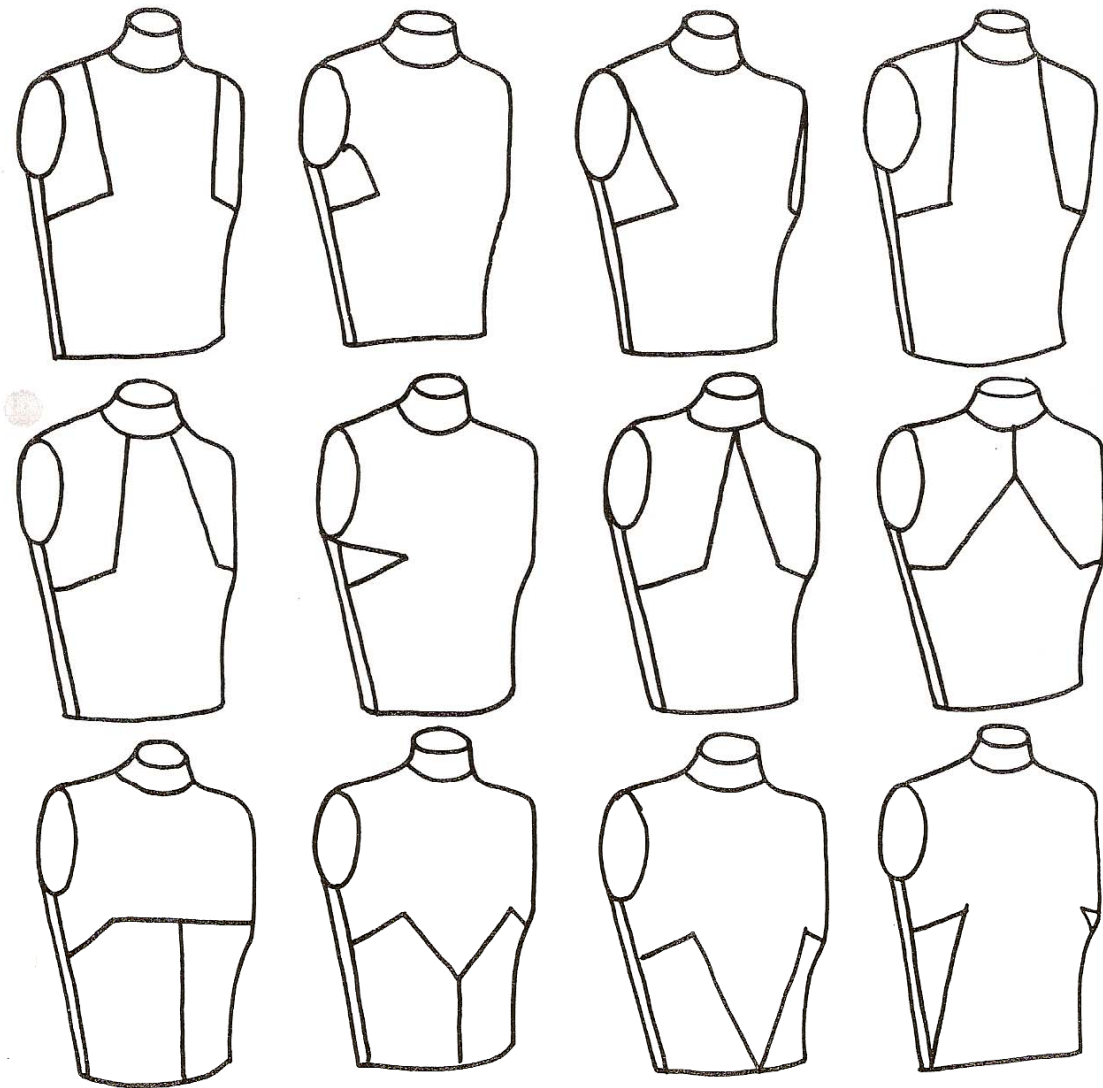


Fig. 4.19 Making darts into seam lines.

Examples of various styles which can be obtained by using fullness from internal seams

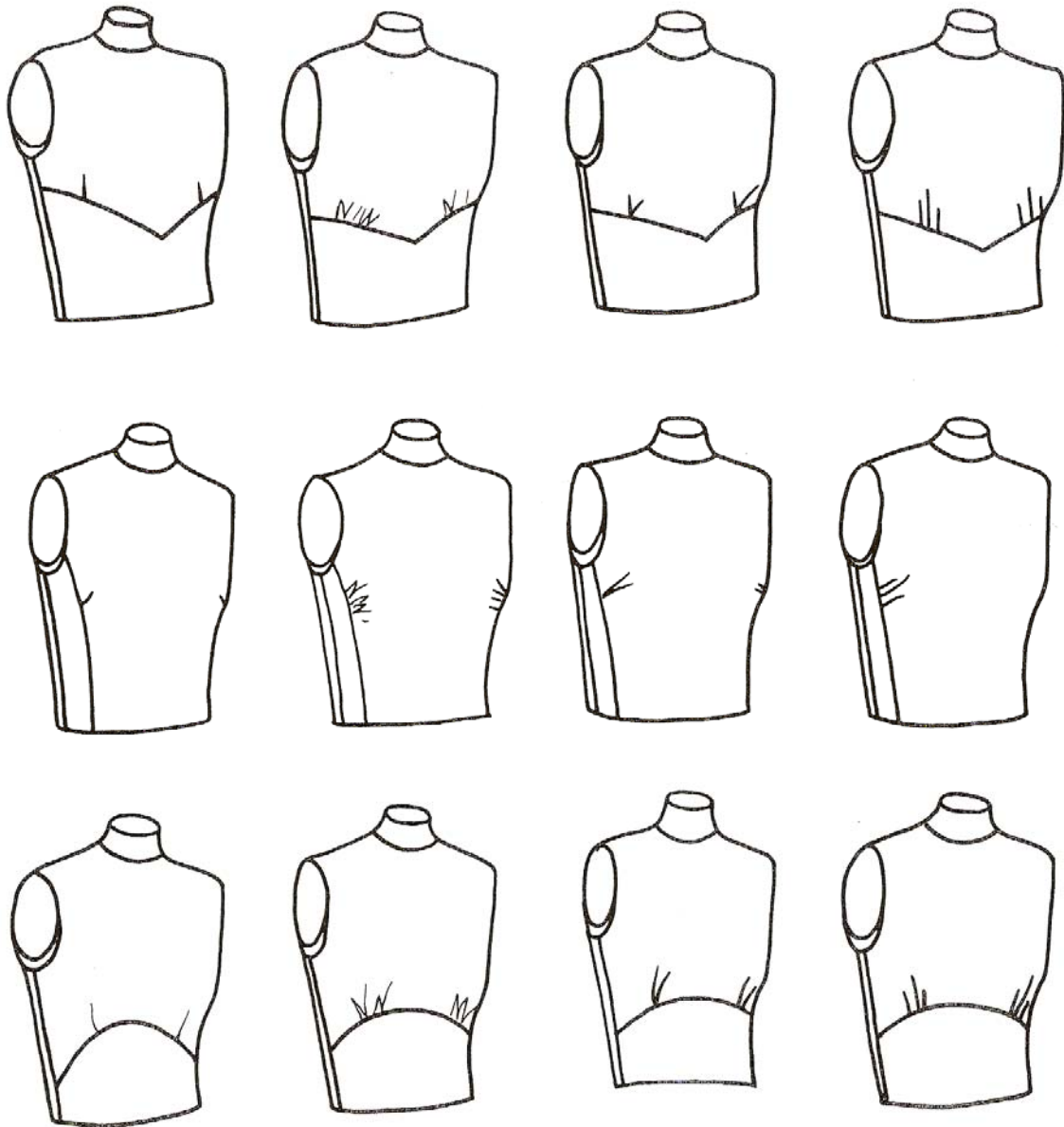


Fig. 4.38 Styles using fullness from internal seams.



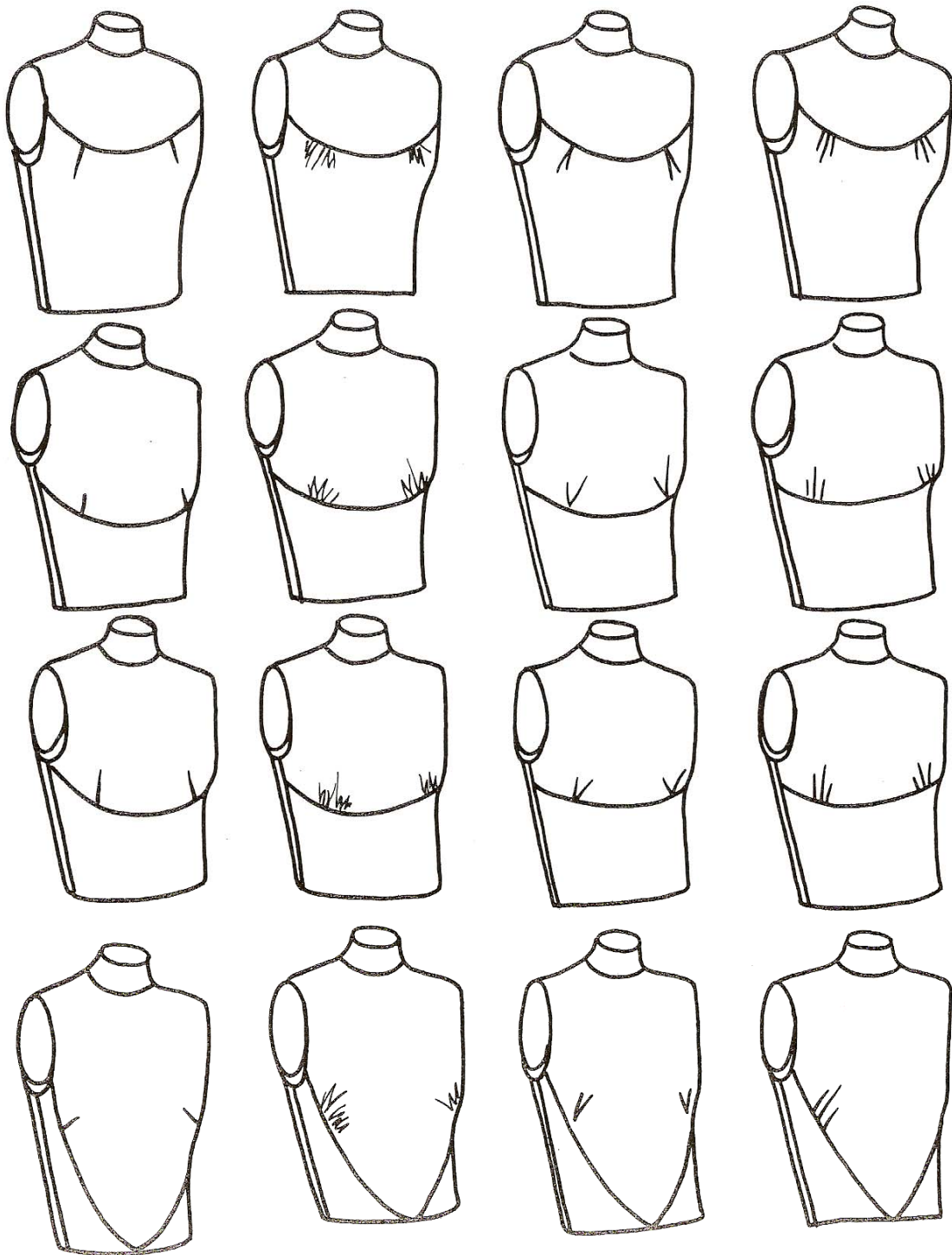


Fig. 4.38 Fullness from internal seams (cont.)

**YOKES**

A yoke is the area between the shoulder and bust. It is modelled as for a bodice without shoulder

darts. It may be plain or shaped (see yokes on skirts).

*Full yoke*

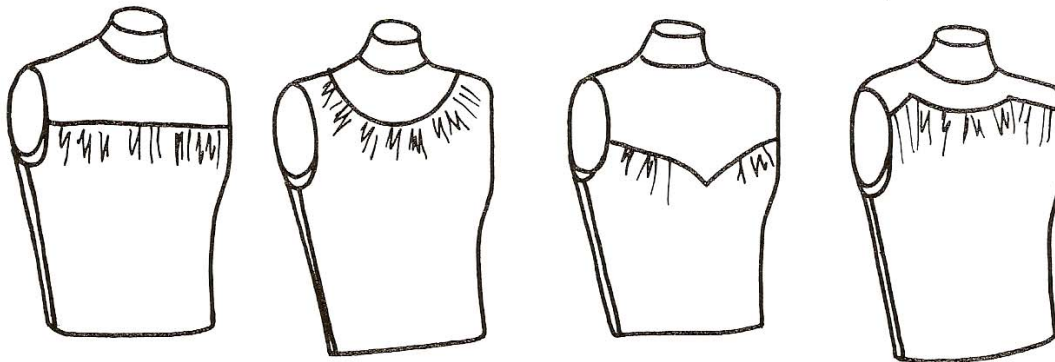


Fig. 4.39 Full yoke - various styles.

*Half yoke*

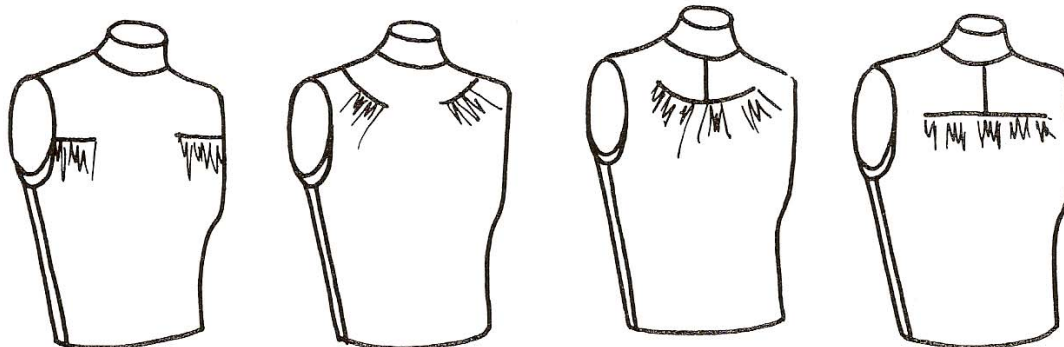


Fig. 4.40 Half yoke - various styles.

*Gathered yoke*

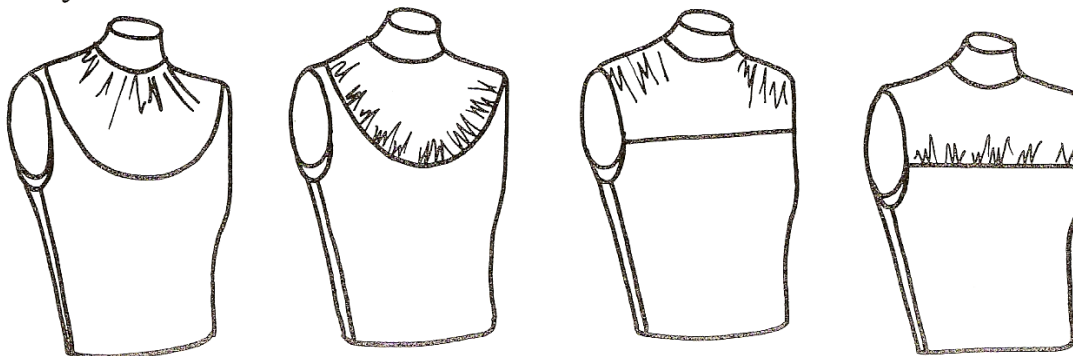


Fig. 4.41 Gathered yoke - various styles.