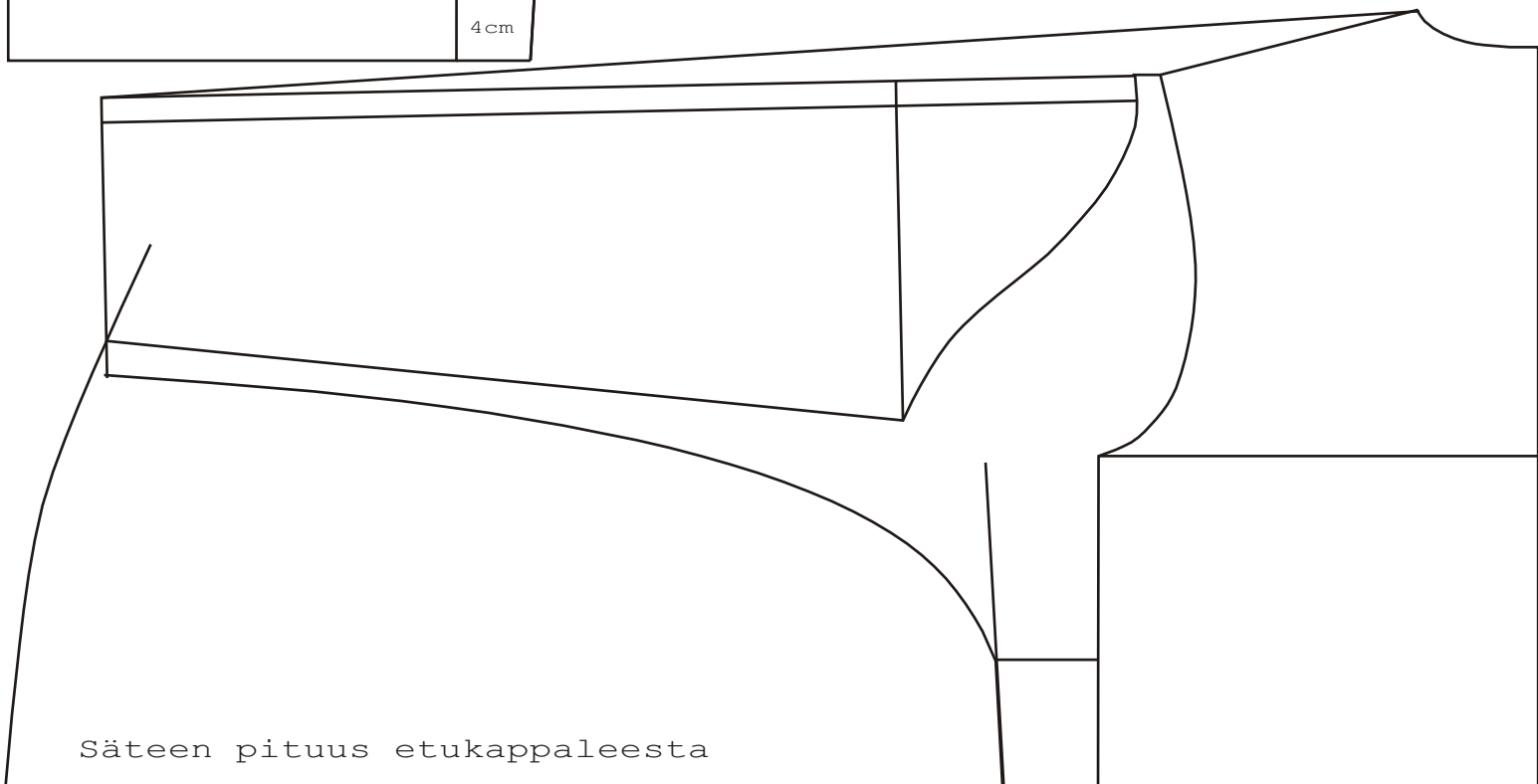


RY VÄLJYYS:  
HALUTTU 30cm  
 $30 - 8 = 22\text{cm}$   
 $22 : 4 = 5,5\text{cm}$

11cm  
5,5cm  
4cm

Mittaa etäisyys  
= säde takakappaleelle





TÄYSKIMONO  
ETUKPL

A line drawing of a kimono front panel pattern piece. It features a curved neckline on the left side, a straight vertical edge on the right, and a curved hemline at the bottom. A vertical double-headed arrow on the left side indicates the length of the piece.



TÄYSKIMONO  
TAKAKPL

A line drawing of a kimono back panel pattern piece. It features a curved neckline on the right side, a straight vertical edge on the left, and a curved hemline at the bottom. A vertical double-headed arrow on the right side indicates the length of the piece.