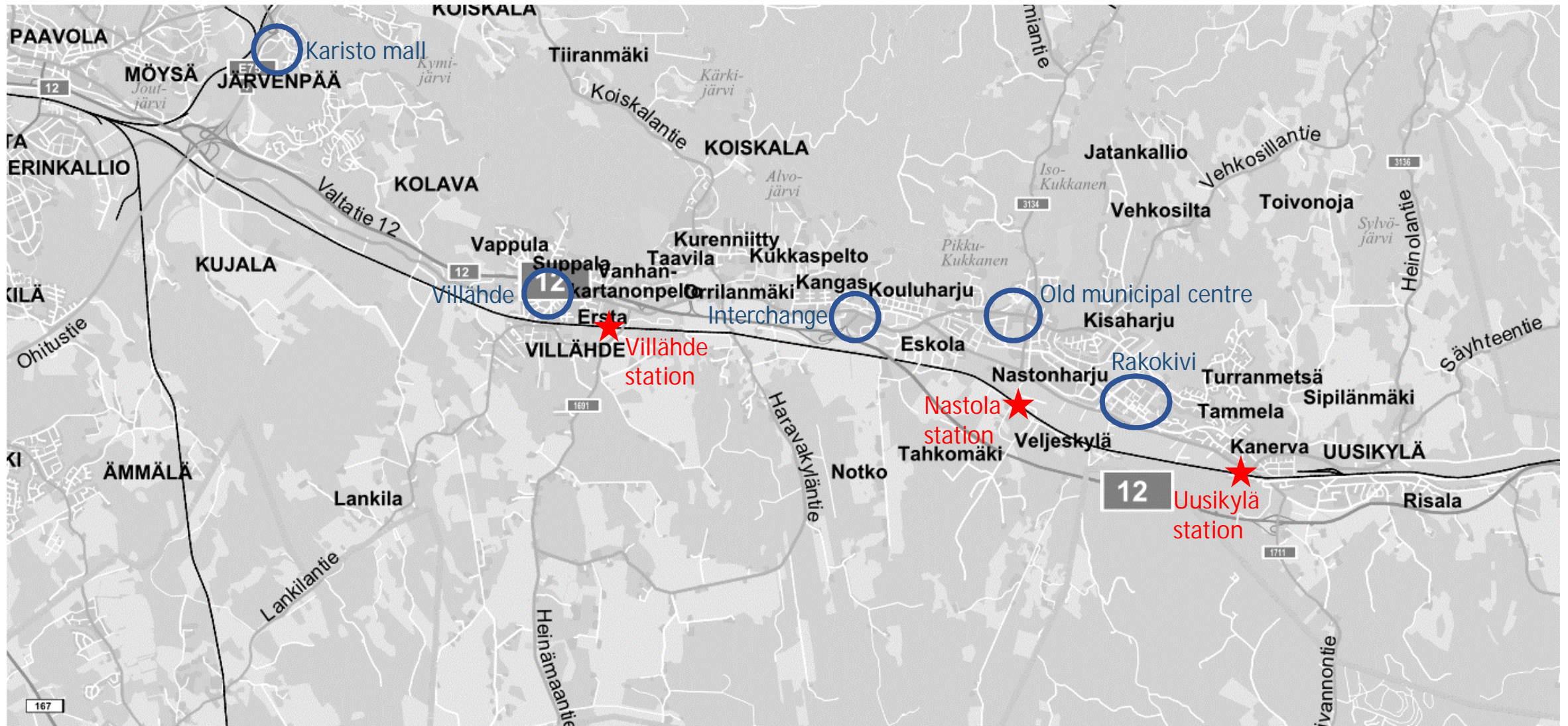


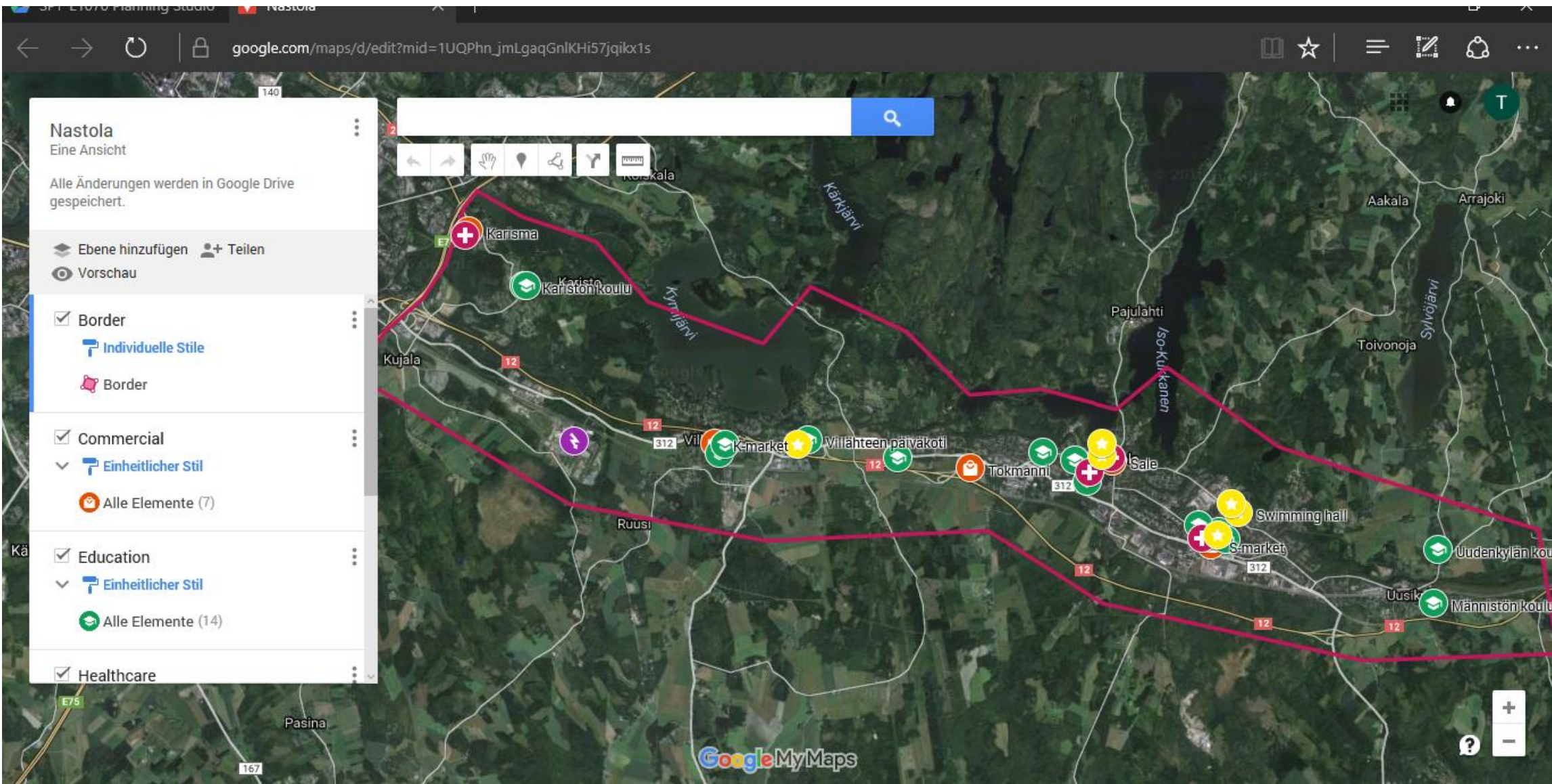
Service Networks of Eastern Lahti

Heikki Salko, Tim Wörle

5.10.2016

Concentrations of services





Commercial services

- “Town centre” at Rakokivi
 - K/S/Lidl supermarkets, pizza-kebab restaurant, flea market, pharmacy, etc.
- Former municipal centre / church
- Some services in Villähde area
 - handicrafts, bakery, etc. in old factory building
- ABC station and Tokmanni next to highway 12 interchange
- Karisma shopping centre next to highway 4
- Small businesses scattered around

Education

- School system has been under downsizing and consolidation
- Primary school at 8 locations
 - 6 for grades 1-6, 1500 students
 - 2 for grades 7-9, 500 students
- Secondary school at Nastopoli
- More and further education in central Lahti or elsewhere
- Kindergartens and family daycare
 - includes one location open 24h

Healthcare

- Nastola health centre
- Basic and dental services at schools
- Central hospital (PHKS) on other side of Lahti
- Advanced healthcare at university hospitals elsewhere in Finland

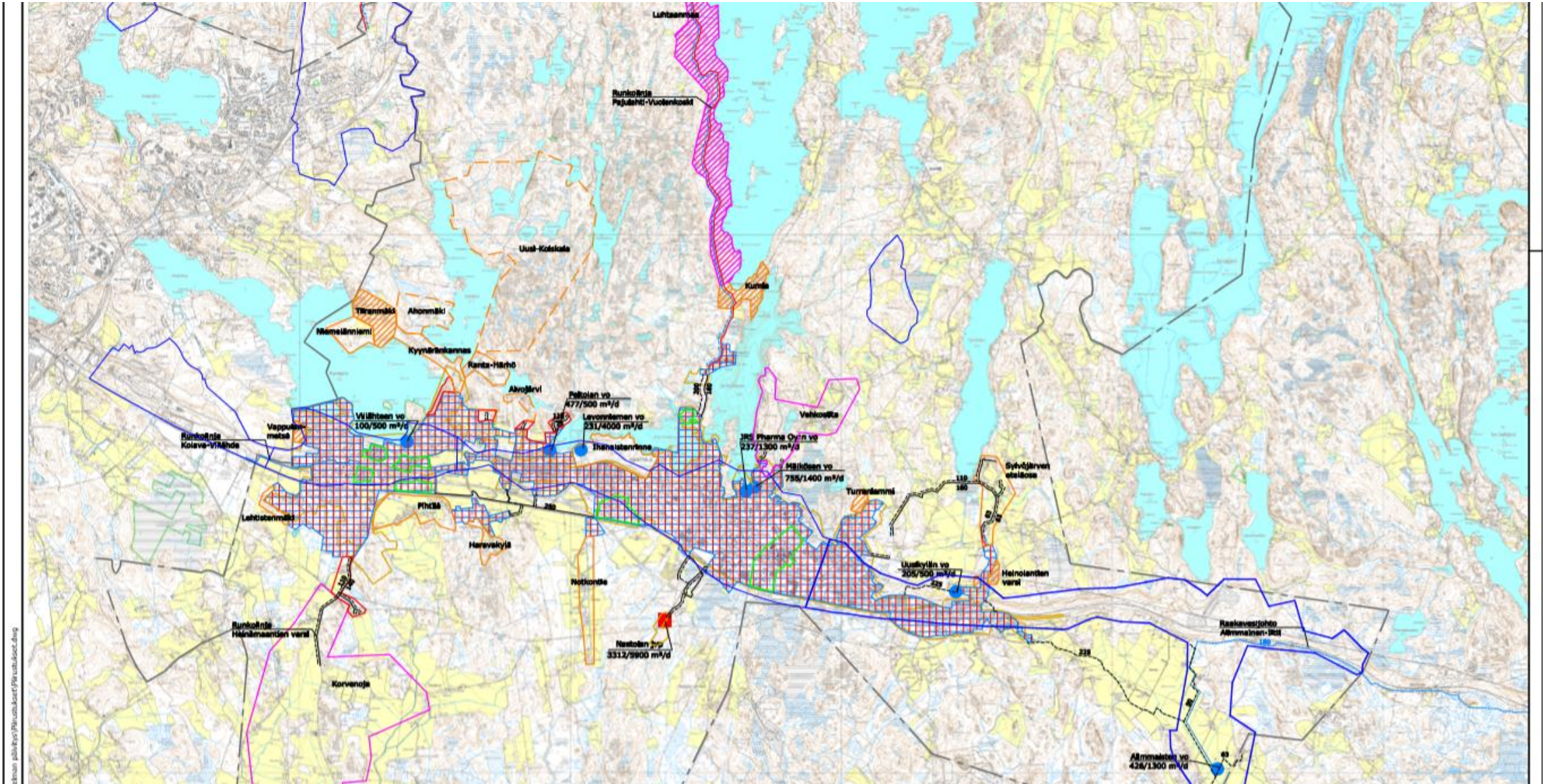
- Two pharmacies
 - Rakokivi, Karisma

Water supply

	Lahti (2015)	Nastola (2015)
○ total amount of pumped water	7.251 mio m ³	0.8 mio m ³
○ water leakage rate	5.9 %	?
○ ground water aquifer supply	20 000 -25000 m ³ /d	11 000 m ³ /d
○ water network	560.7 km	201 km
○ connected inhabitants	98.8 %	83 %
○ good quality; only chemical and UV disinfection		

<http://www.lahtiaqua.fi/vuosikertomus/2015/#06>

http://www.nastola.fi/easydata/customers/nastola/files/vesihuoltolaitos/kehittamissuunnitelma_korjattu.pdf



Water supply Nastola http://www.nastola.fi/easydata/customers/nastola/files/vesihuoltolaitos/102_suunnitelmakartta.pdf

Waste water

	Lahti (2015)	Nastola (2015)
○ invoiced waste water	6.9 mio. m ³ /a	0.857 mio. m ³
○ treated waste water	11.6 mio. m ³ /a	1.22 mio. m ³ /a
○ connected inhabitants	98.8 %	82 %
○ drainage network	504.1 km	107 km
○ leakage	33.3 %	37 %

<http://www.lahtiaqua.fi/vuosikertomus/2015/#06>

http://www.nastola.fi/easydata/customers/nastola/files/vesihuoltolaitos/kehittamissuunnitelma_korjattu.pdf

Waste



Kujala Waste Treatment Centre

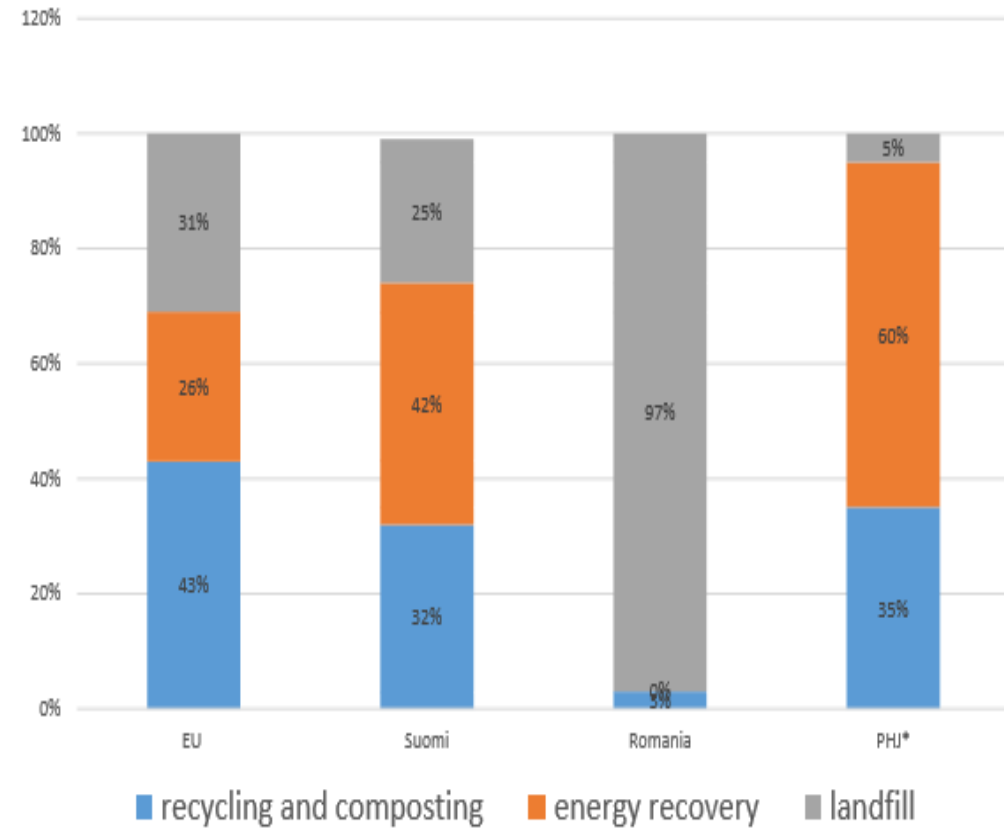


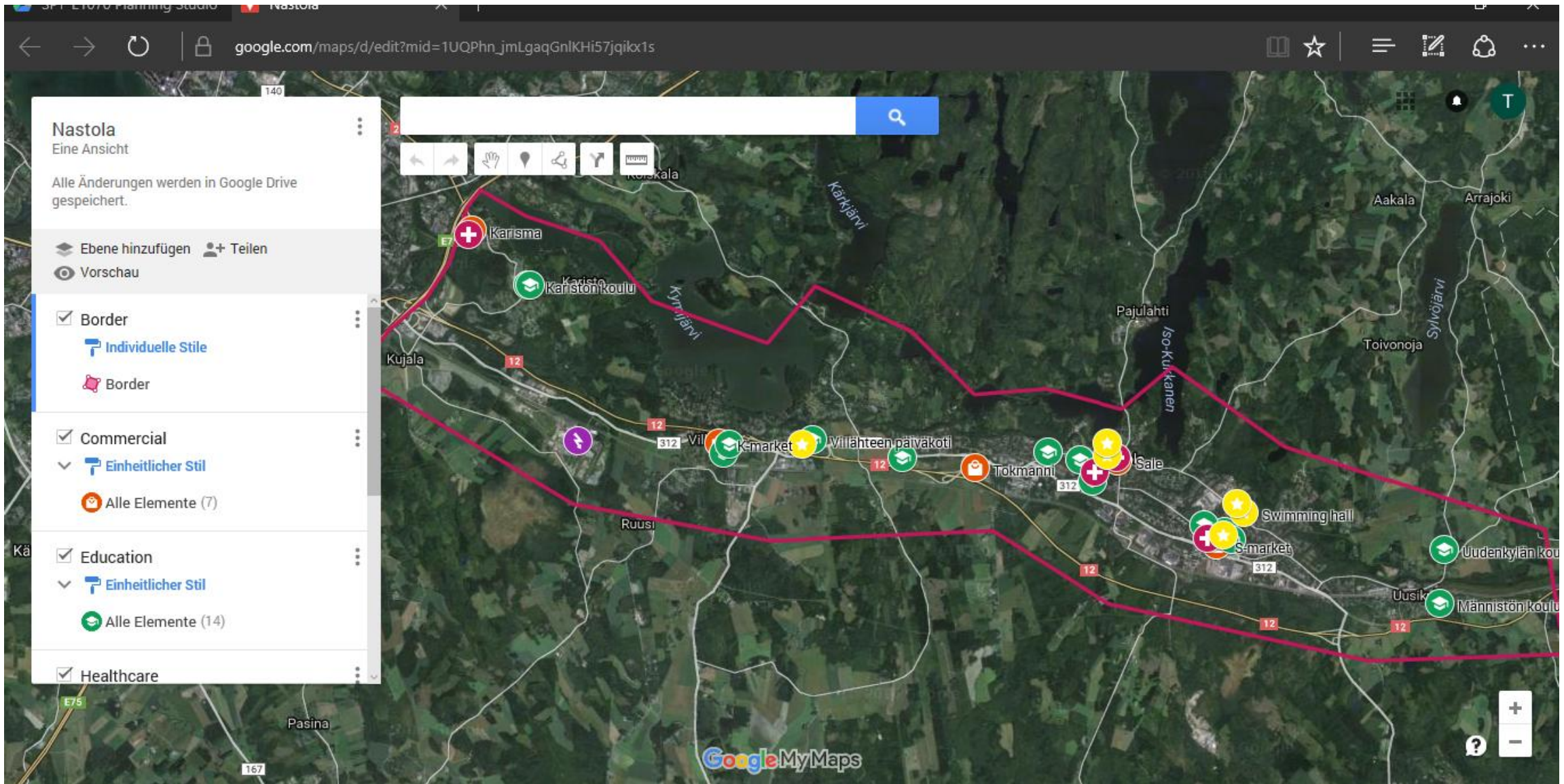
70 hectares, 30-year lease from City of Lahti. In 2014 total 184 000 tons of waste received, of which **91 % recovered**

Waste Management in Lahti Region, Finland; Päijät-Häme Waste Management Ltd (PHJ) 27.9.2015



Gasification in Lahti





https://www.google.com/maps/d/edit?mid=1UQPhn_jmLgaqGnlKHi57jqikx1s