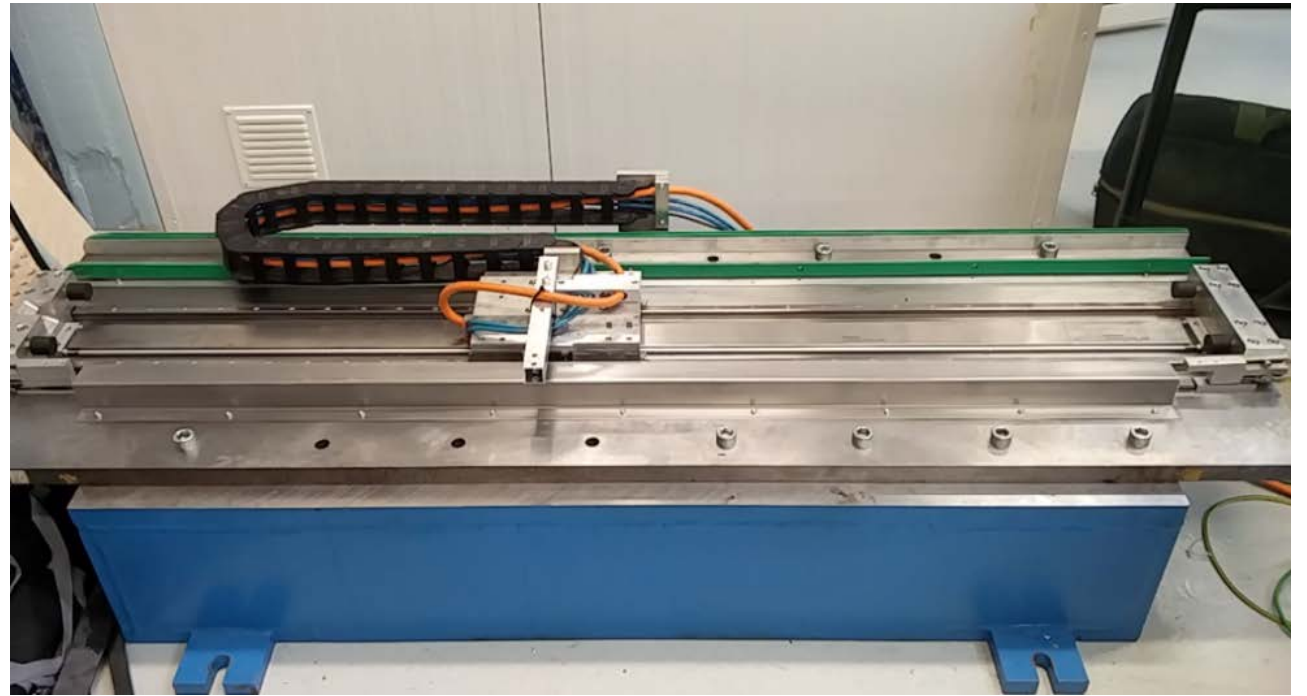


Siemens linear motor

- ▶ Why to use linear motor
 - ▶ Fast
 - ▶ Precise
 - ▶ Minimal maintenance
- ▶ Usually used in high precision milling machines and in production lines
- ▶ Siemens Simotics L-FN3:
 - ▶ Specifications according to the manufacturer:
 - ▶ Max. acceleration 27 m/s^2 , max. force produced 600 N , Max. velocity 3.66 m/s

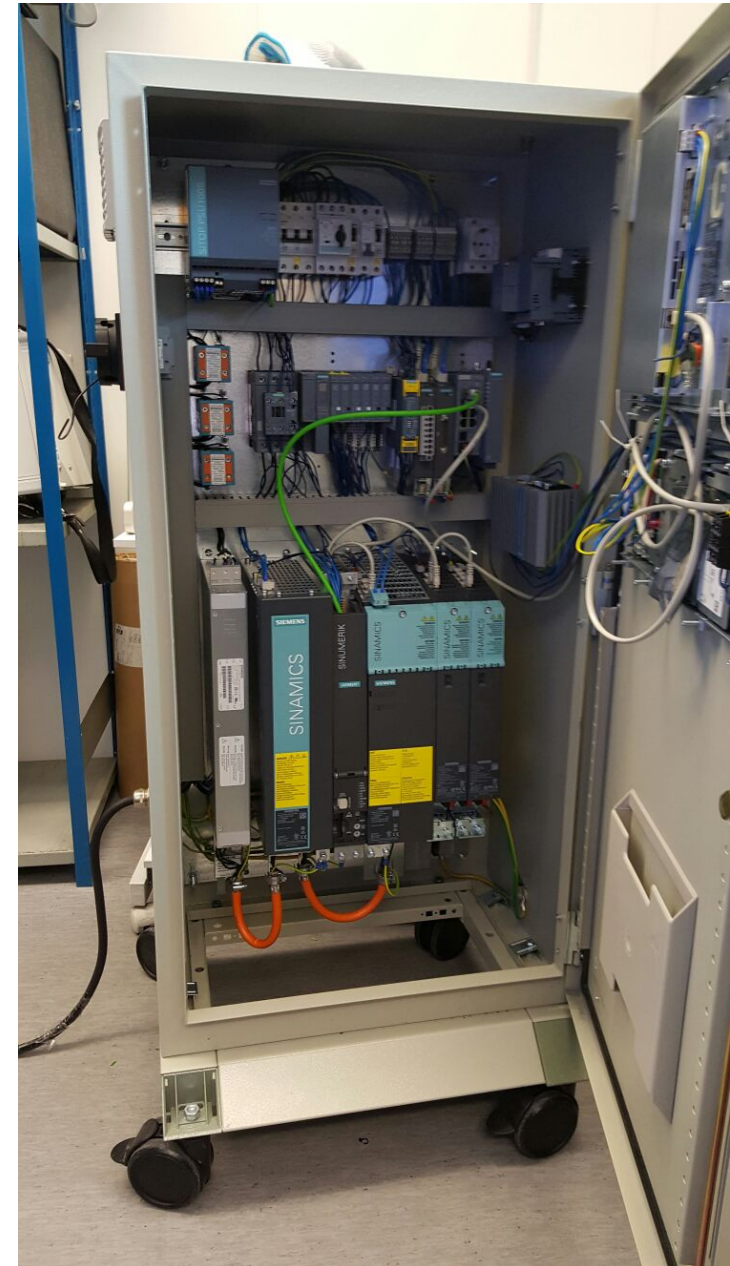


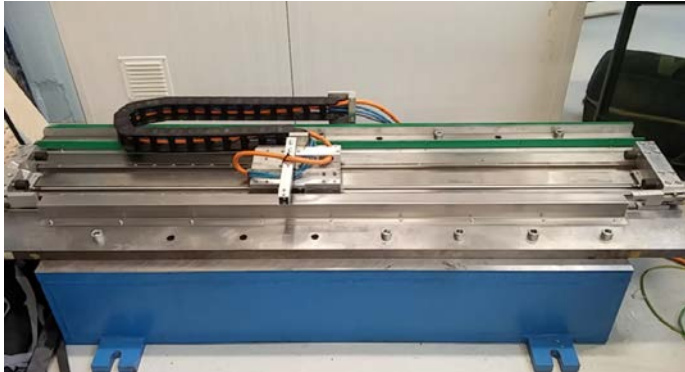
Sinumerik 840s

- ▶ G language is used to program the NC
- ▶ High performance Simatics logic drive
- ▶ Integrated high level safety features



Aalto University
School of Engineering





+



+ ? = !?



Aalto University
School of Engineering