

Excursion to Viikinmäki WWTP

EXCURSION

To Viikinmäki wastewater treatment plant

THURSDAY 28.3. during the course teaching session

Some assignments during the visit

Using public transportation

COMPULSORY



Pictures: HSY

Viikinmäki WWTP

Address: Hernepellontie 24
We'll meet at 8:45
at the main entrance



How to get there?

A Tietotie 1E, Espoo

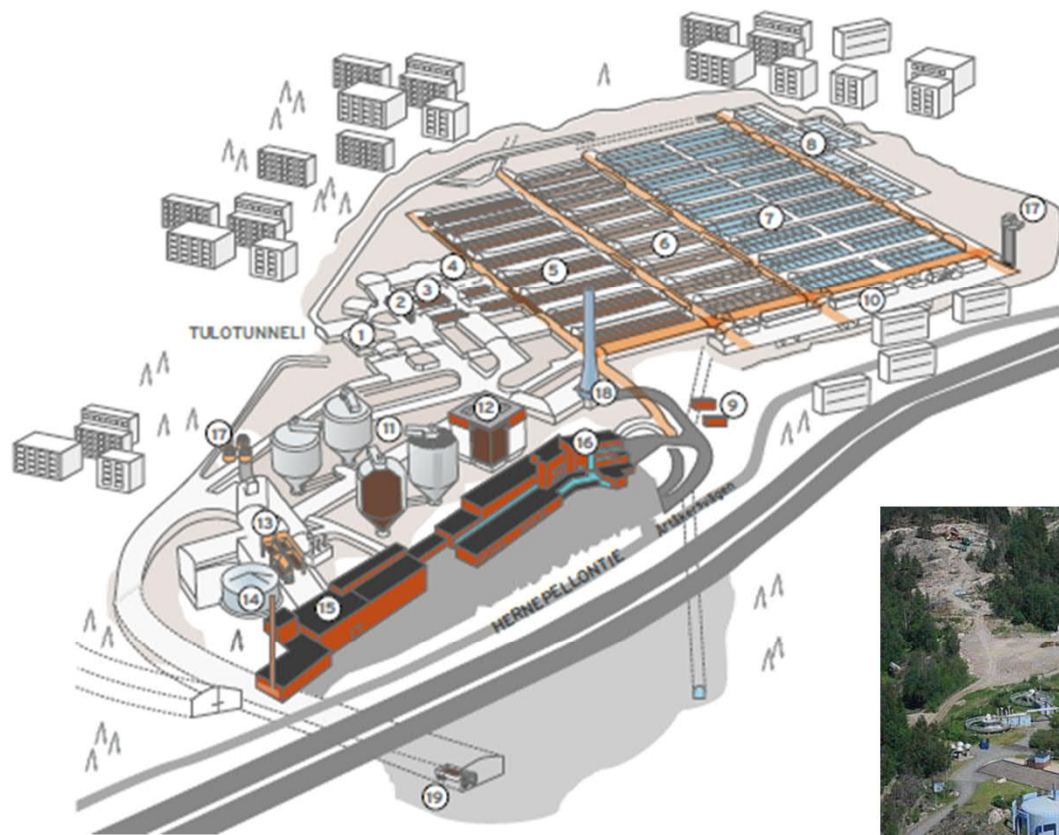
B Hernepellontie 24, Helsinki

07:45 to 28.3 Asetukset

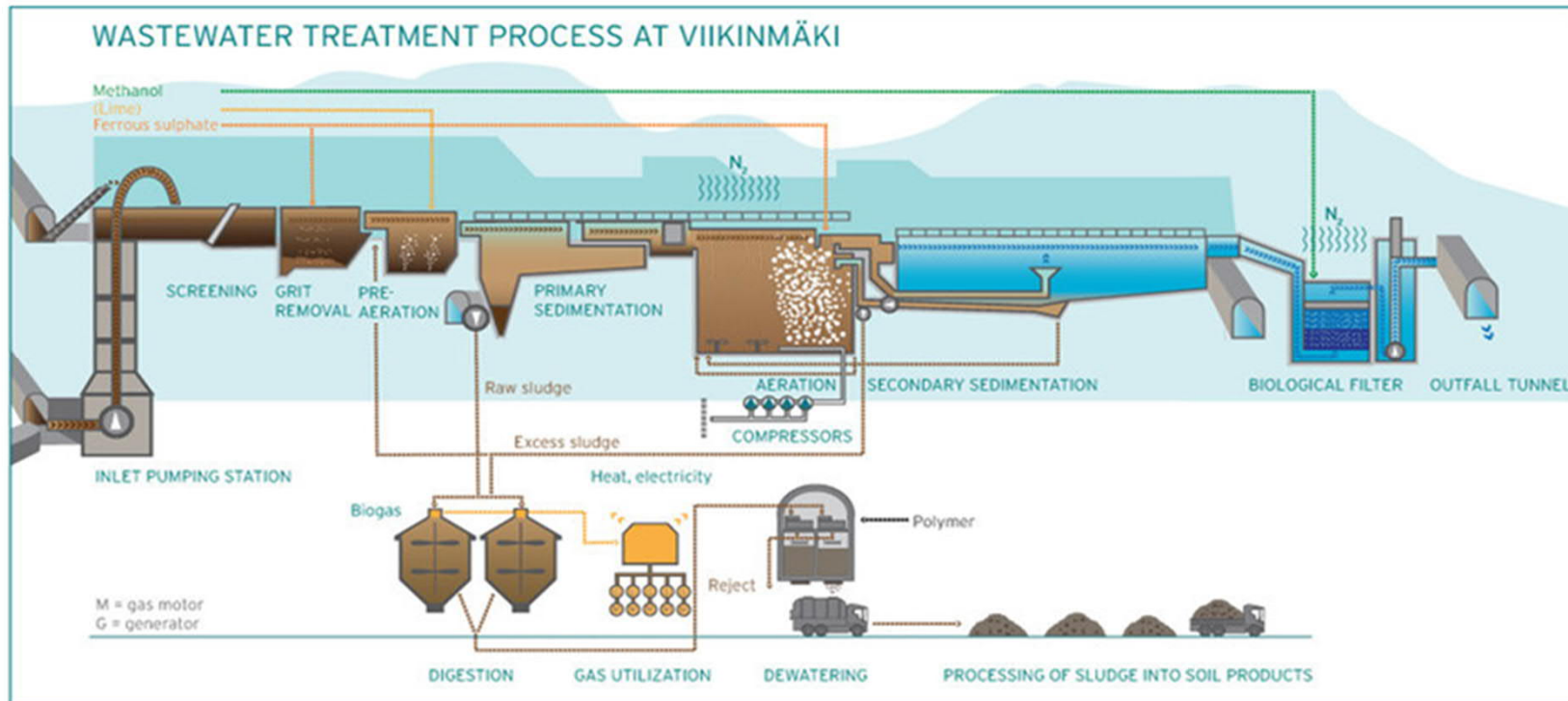
07:47	Aalto-yliopisto	Hakaniemi	08:43	56 min	1.2 km
07:54	M1	71			
07:46	Innopoli		08:43	57 min	1.3 km
07:55	550				
07:55	Aalto-yliopisto	Hakaniemi	08:48	53 min	1.1 km
08:02	M2	78			
07:51	Innopoli		08:48	57 min	1.3 km
08:00	550				
07:52	Aalto-yliopisto	Itäkeskus (M)	08:52	1 h 0 min	1.2 km
07:59	M1	550			

Aiemmin Nyt Myöhemmin

© OpenStreetMap



Process in Viikinmäki WWTP



WWTPCatching

Each student will receive a hint that you need to place somewhere in the process.

More info in Viikinmäki on Thursday 😊