



Aalto-yliopisto  
Insinööritieteiden  
korkeakoulu

# EEN-E4004 Fundamentals of HVAC Design

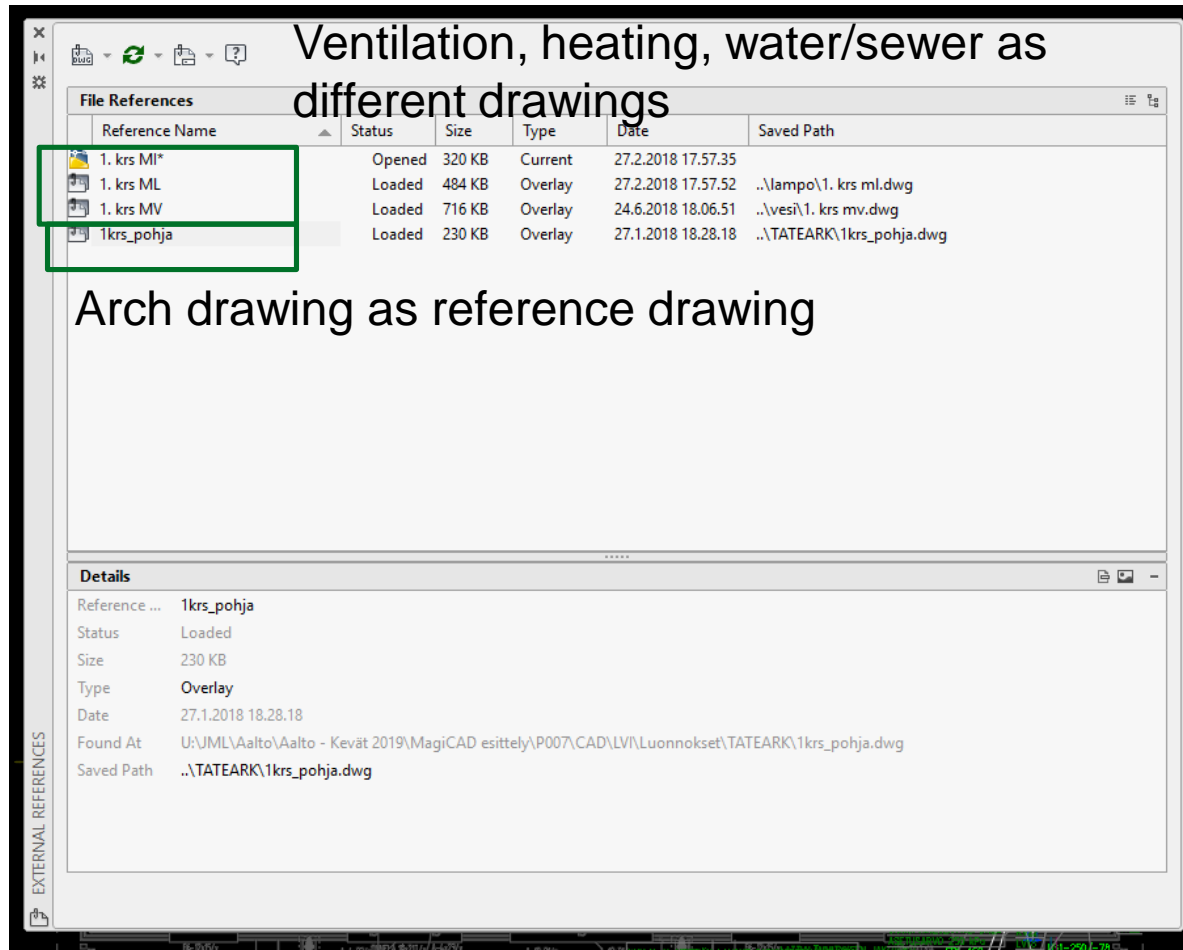
Lecture 24.4.2019

Introduction to MagiCAD

M.Sc Juho Lepistö

M.Sc Vikke Niskanen

# Introduction to MagiCAD

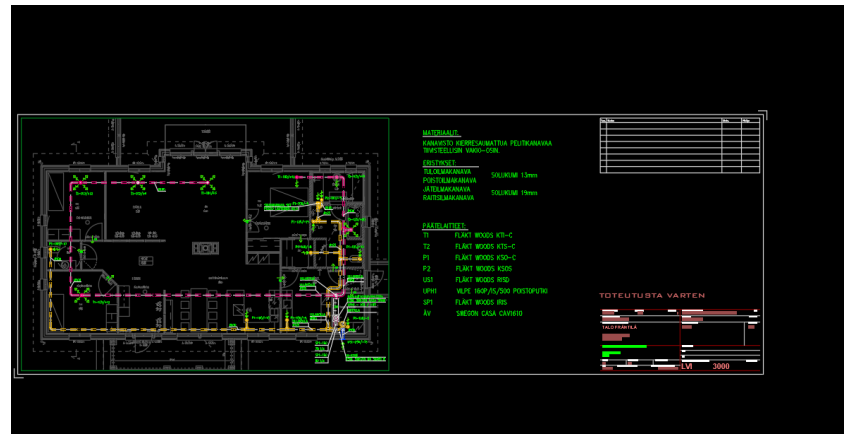


# Introduction to MagiCAD

- Model space
  - 1:1
  - Design is done here



- Layout space
  - Eg. 1:50
  - Printing design is done here



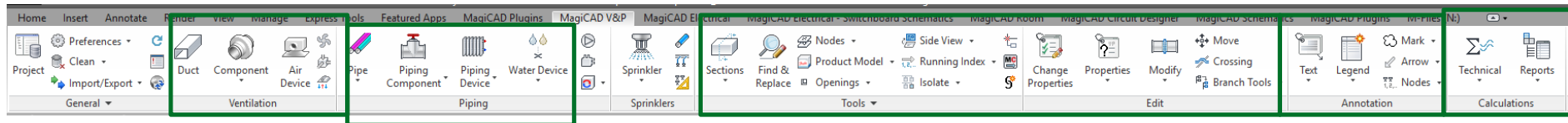
# Introduction to MagiCAD

The screenshot displays the MagiCAD V&P software interface. The top menu bar includes 'Home', 'Insert', 'Annotate', 'Render', 'View', 'Manage', 'Express Tools', 'Featured Apps', 'MagiCAD Plugins', 'MagiCAD V&P', 'MagiCAD Electrical', 'MagiCAD Electrical - Switchboard Schematics', 'MagiCAD Room', 'MagiCAD Circuit Designer', 'MagiCAD Schematics', 'MagiCAD Plugins', and 'M-File'. The 'Project' menu is highlighted with a green box. Below the menu bar, the 'Project' tab is active, showing a tree view of project settings on the left and a table of storey data on the right. The table is titled 'Project file' and contains the following data:

Name	x	y	z	a	b	Storey area	Storey variabl...	Storey variabl...
1. kerros	0	0	54500	200000	200000	2600	Rectangular	
Vesikatto	0	0	19000	200000	200000	2000	Rectangular	
2. kerros	0	0	15000	200000	200000	4000	Rectangular	
kellari	0	0	9000	200000	200000	3000	Rectangular	

Below the table, the 'Project settings' section is visible, with a green box highlighting the 'Storey' settings. The 'Storey settings' section is also visible, with a green box highlighting the 'Active Storey' settings. A 3D wireframe model of a building is shown in the background.

# Introduction to MagiCAD



Ventilation

Piping

Tools and editing

Annotation

Calculations

# TASK 6

- The objective is to draw all drawings made in task 5 by MagiCAD
  - Ventilation drawing
  - Water and sewer drawing
  - Heating drawing
  - Site plan
  - Section and facade drawings
- More detailed information, deadlines etc. will be provided in the near future