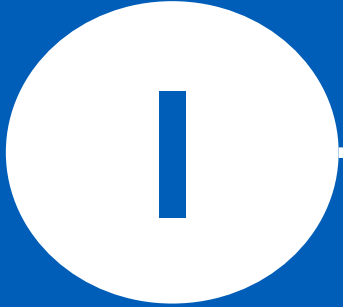
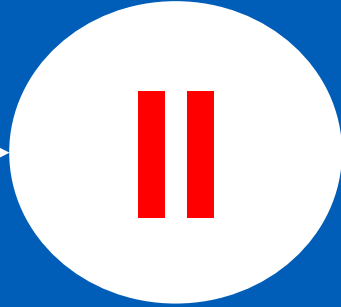


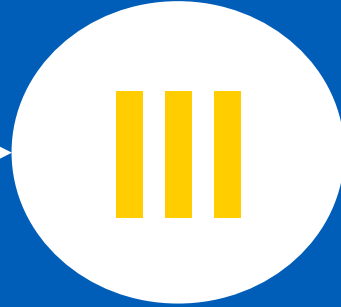
**Conceptual
Foundations
of AIS**



**Transaction
cycles**



AIS control



**AIS investments
and
outsourcing**



**Database
design**

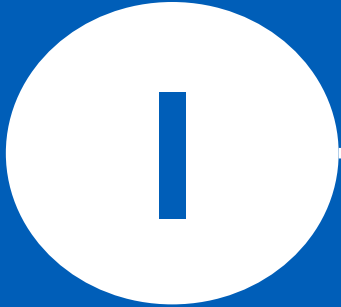


Aalto University
School of Business

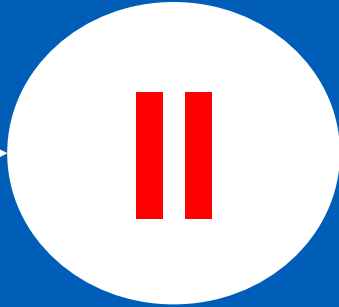
Transaction cycles

by David Derichs ©
Lecture 2

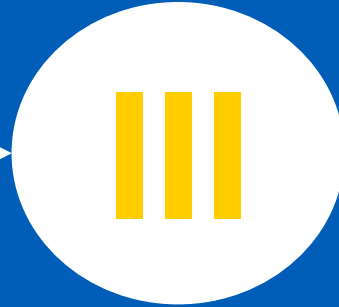
Revenue
cycle



Purchasing
cycle



Payroll
cycle

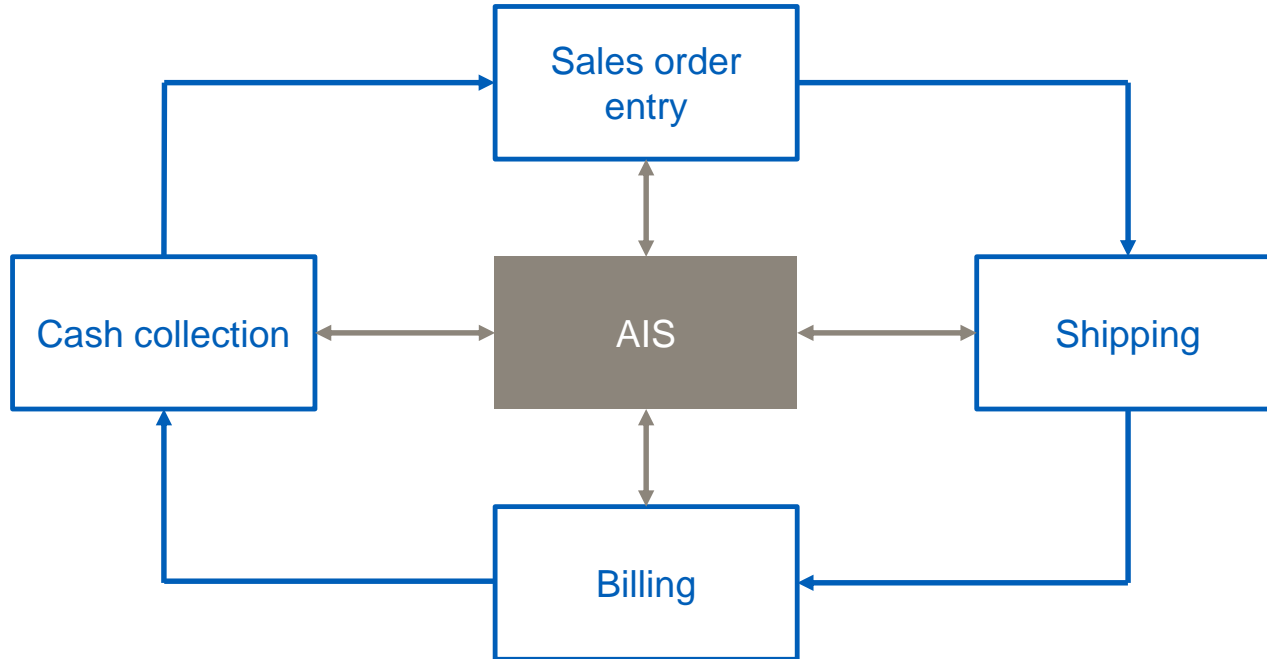


Case:
Business
Intelligence



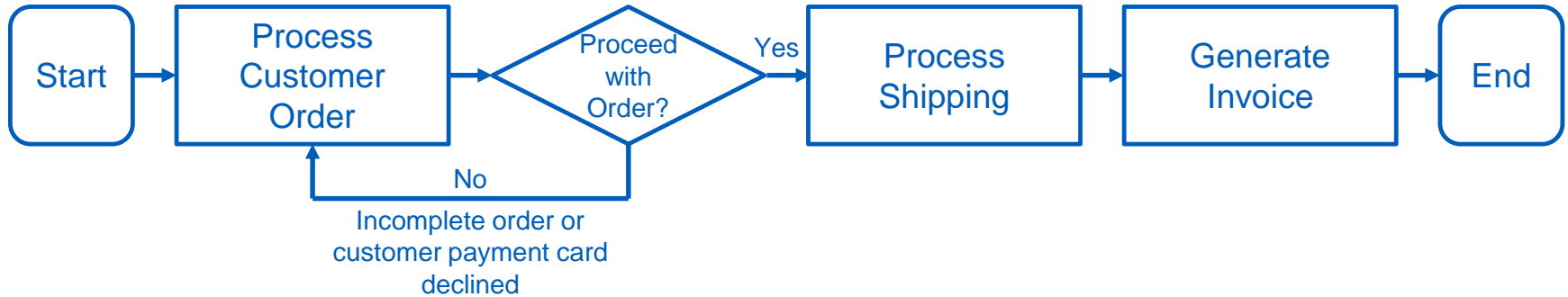
I. The Revenue Cycle

The revenue cycle



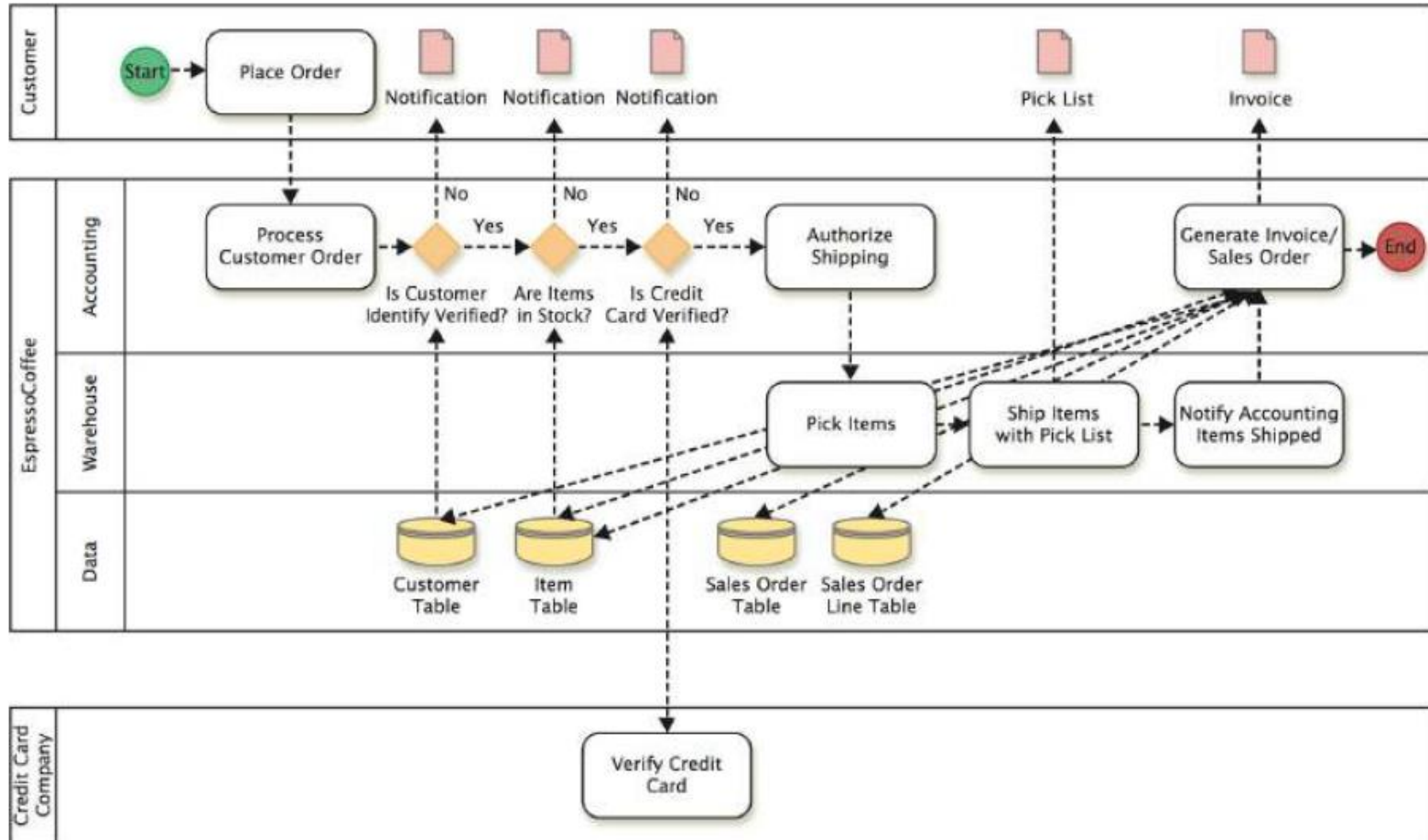
What are general threats to the revenue cycle?

Flowchart: Sales order entry and shipping process (1/3)

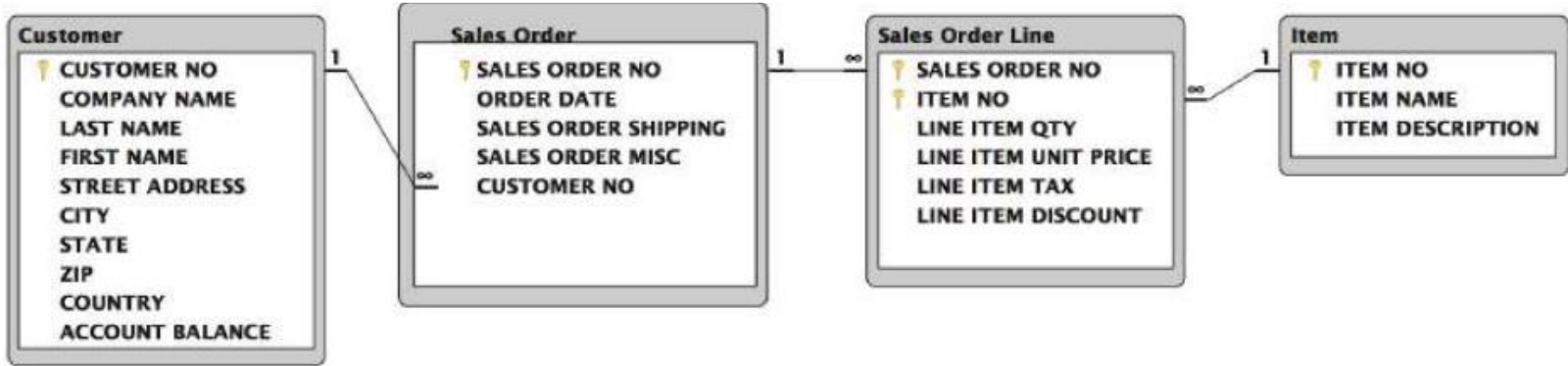


What are threats to the sales order entry and shipping process?

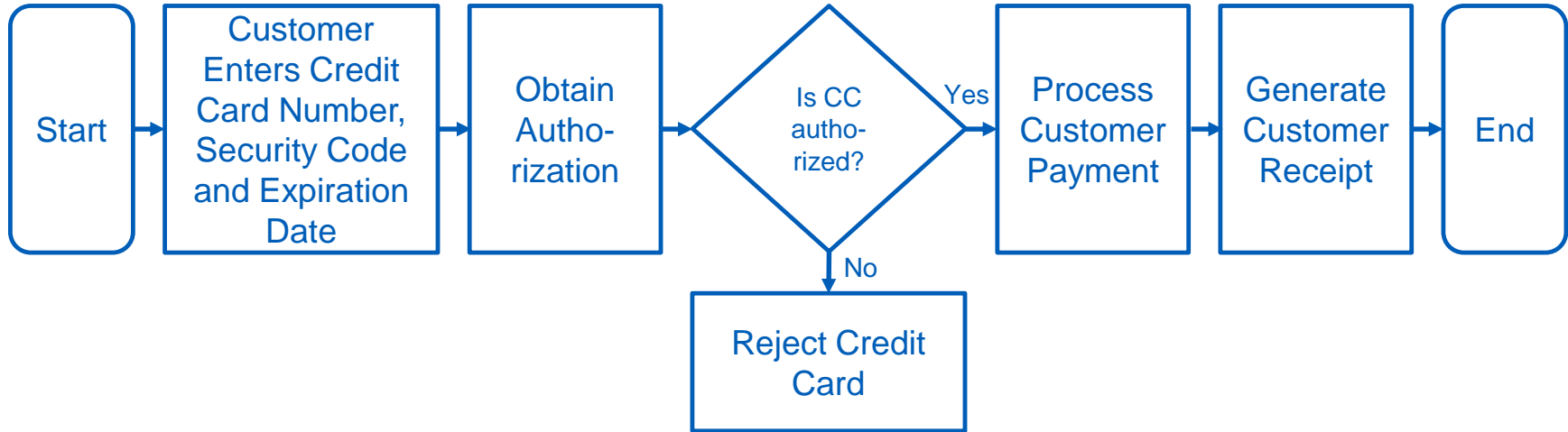
Business process map (BPMN 2.0): Sales order entry and shipping process (2/3)



Database tables: Sales order entry and shipping process (3/3)

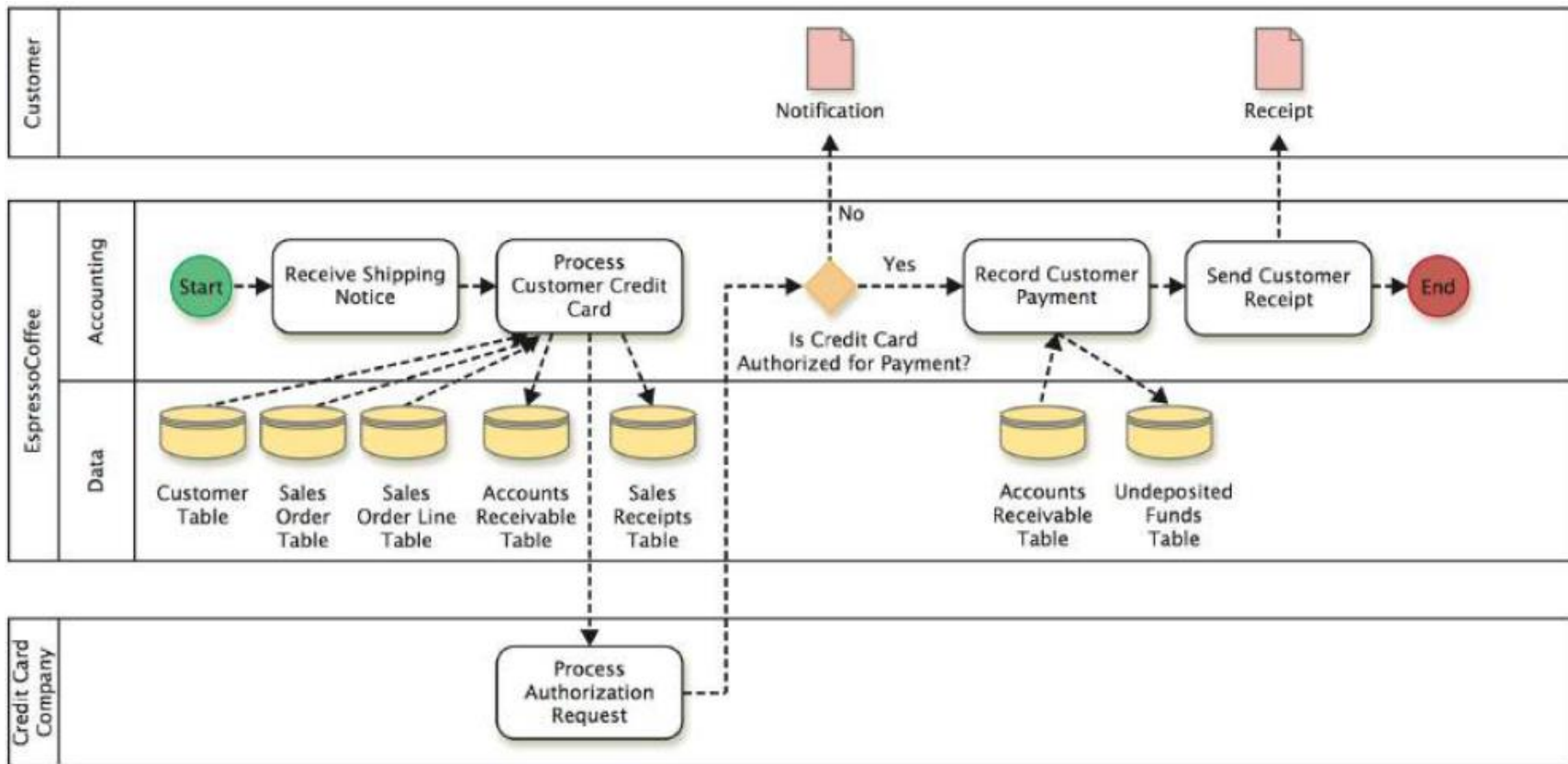


Flowchart: Billing (1/2)

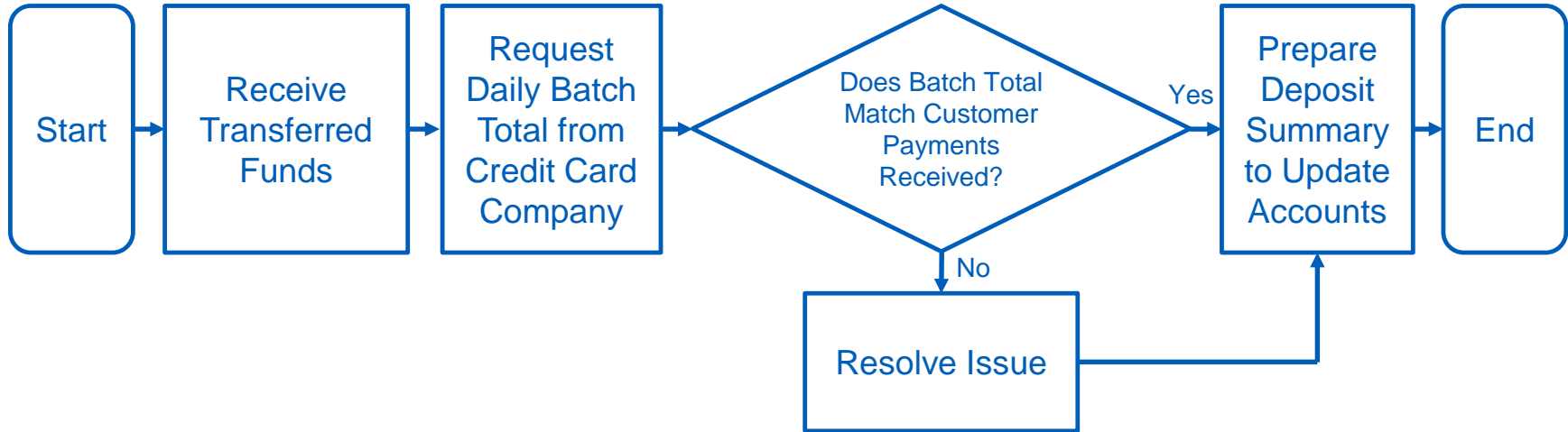


What are threats to the billing process?

Business process map (BPMN 2.0): Billing (2/2)

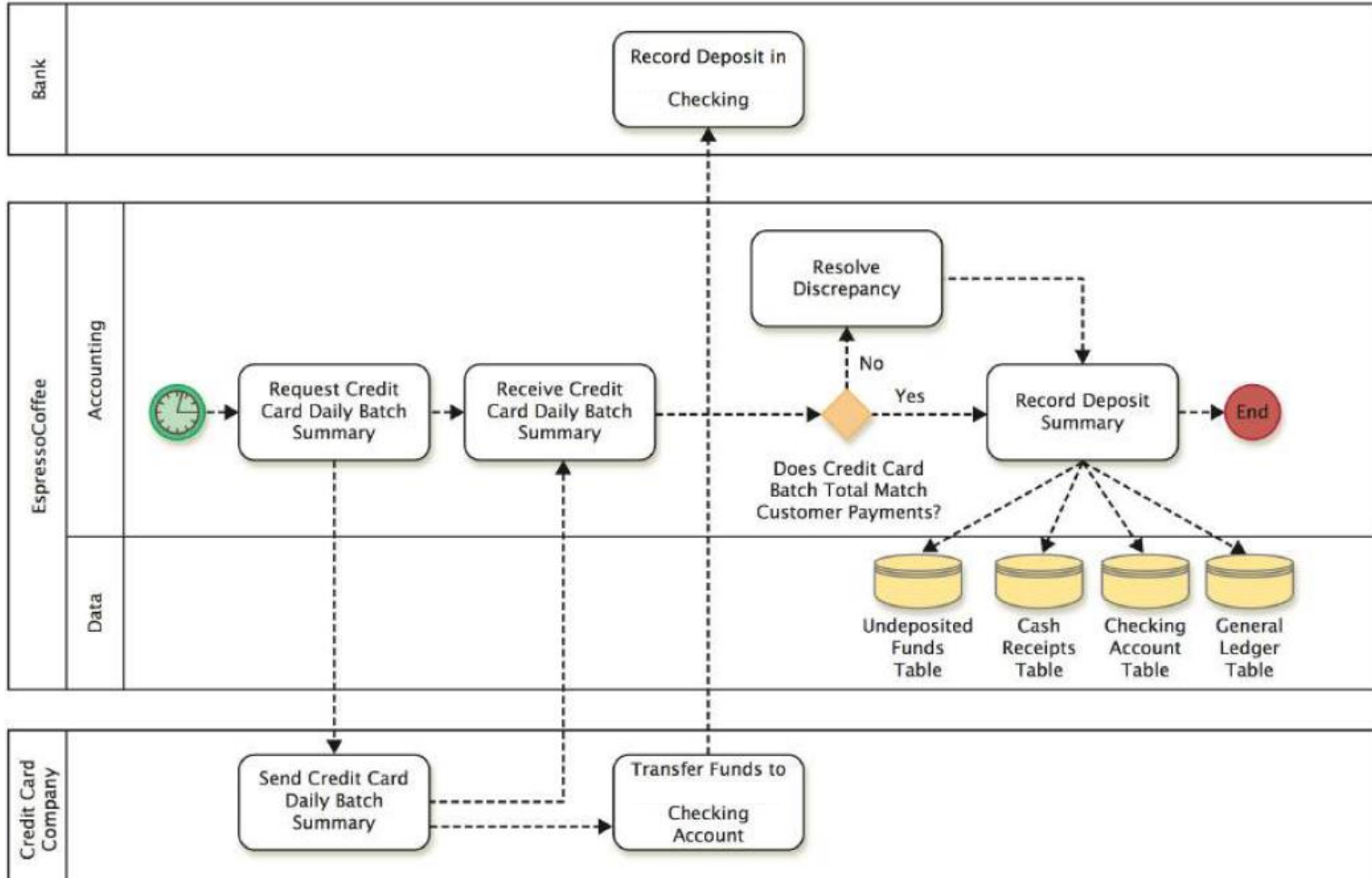


Flowchart: Cash collection (1/2)



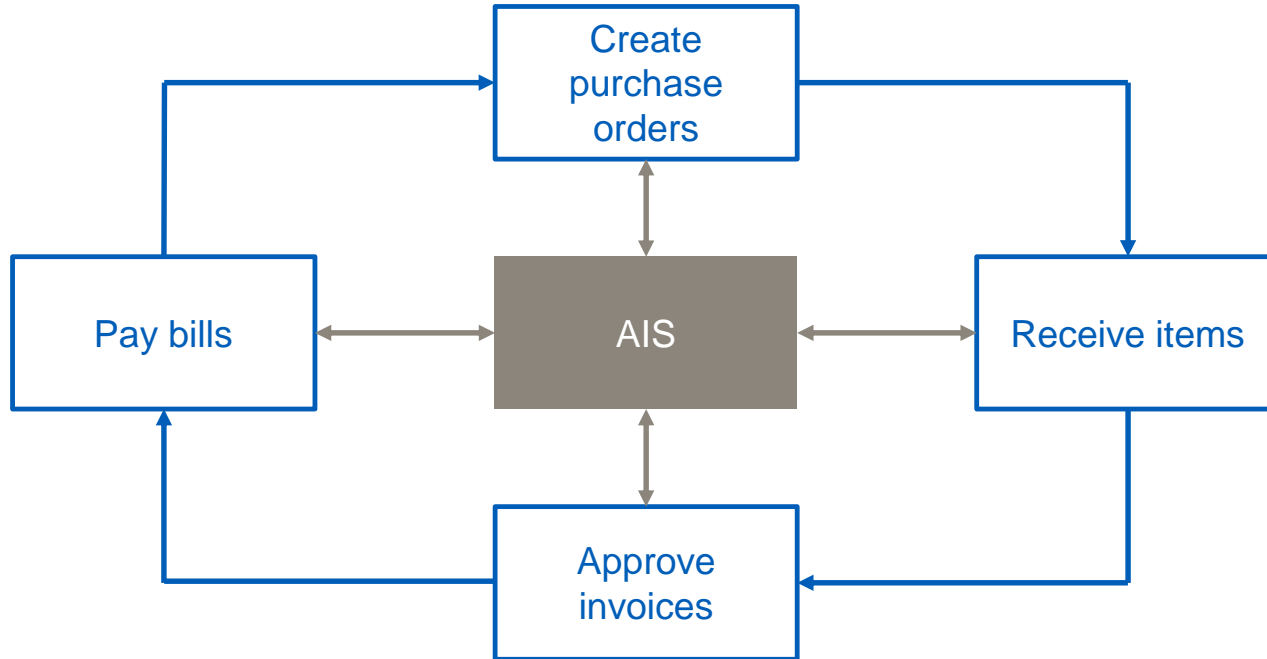
What are threats to the cash collections process?

Flowchart: Cash collection (2/2)



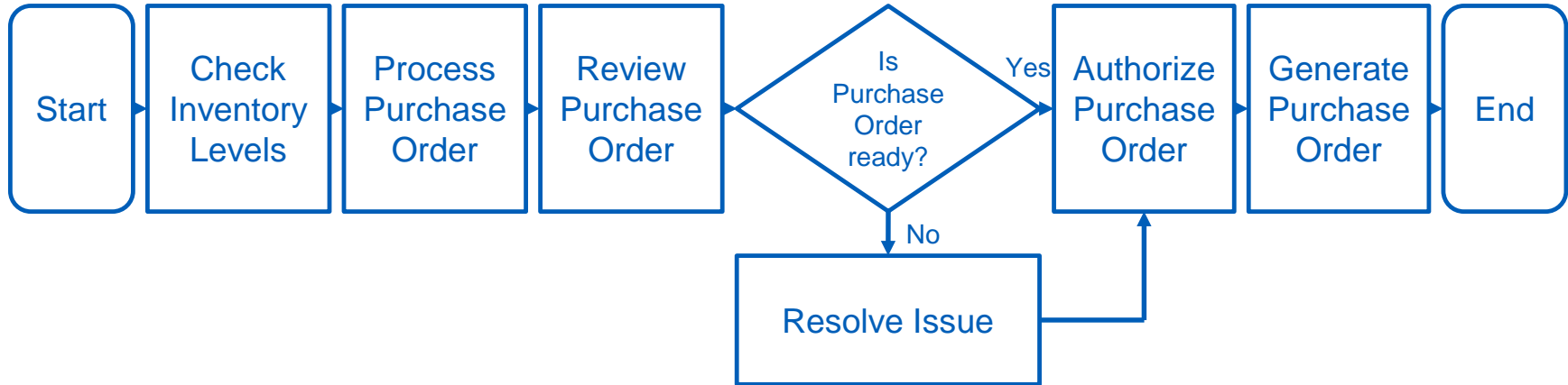
II. The Purchasing Cycle

The purchasing cycle



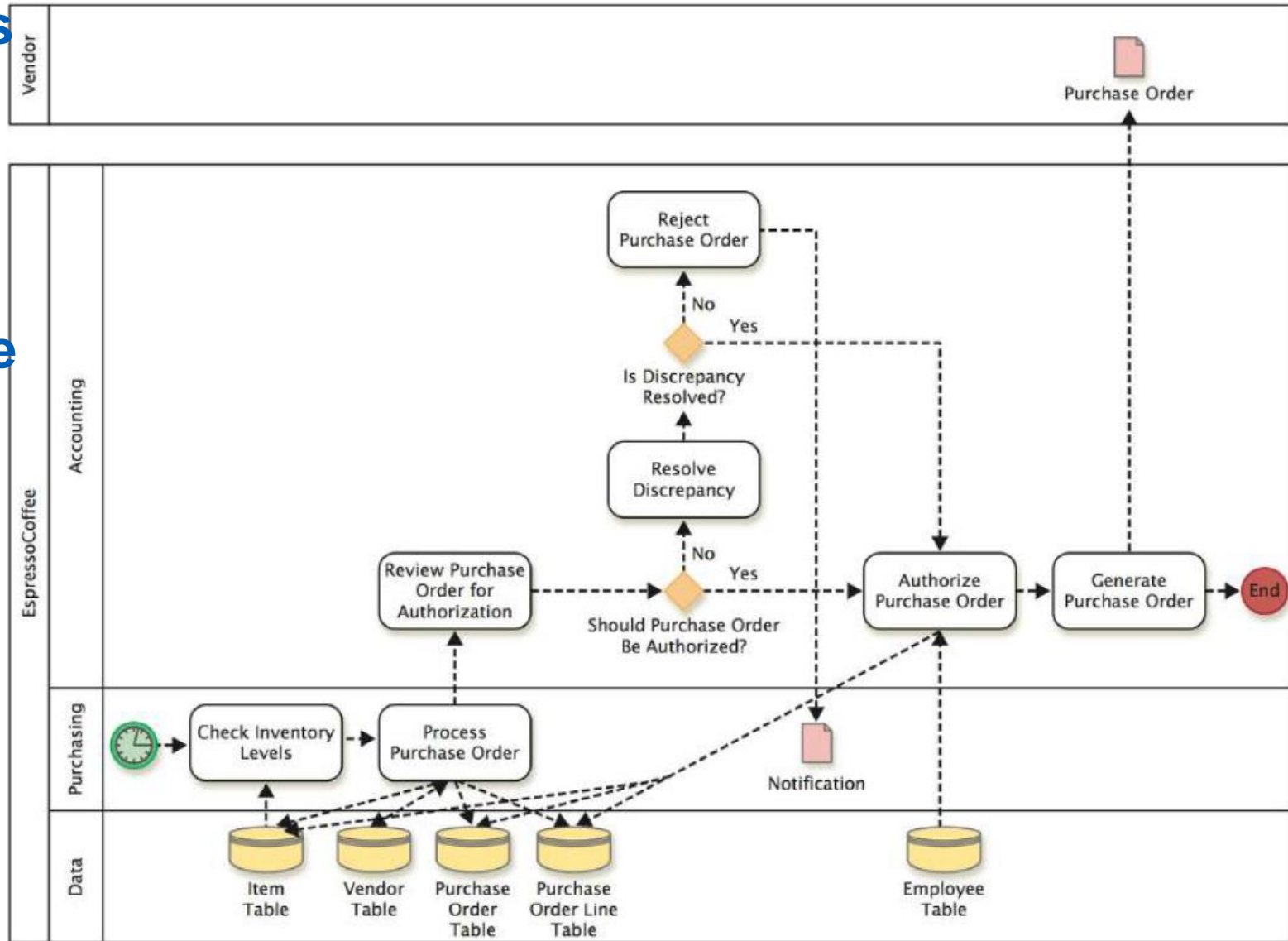
What are general threats to the purchasing cycle?

Flowchart: Create Purchase Order (1/2)

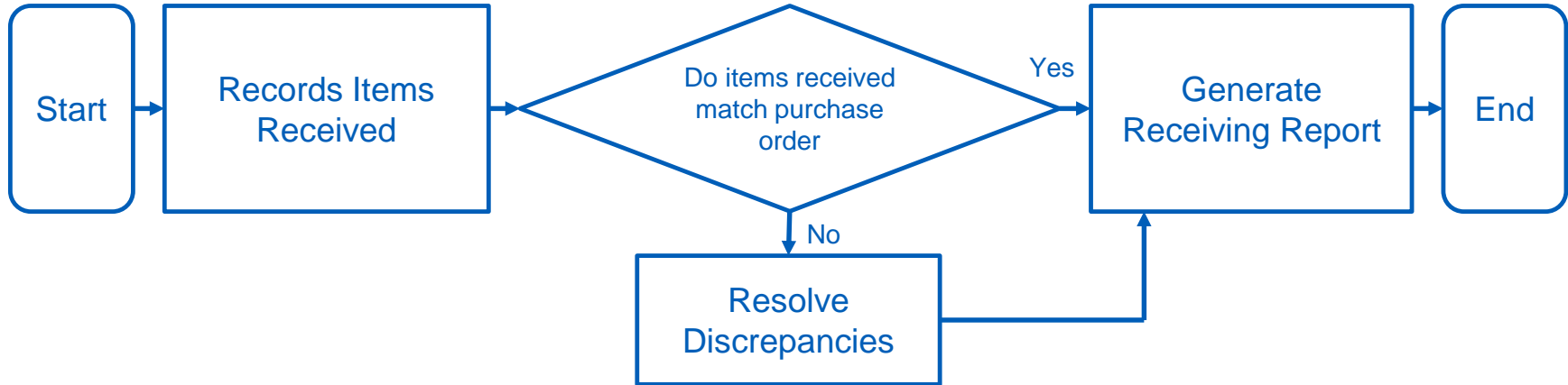


What are threats to the create purchase order process?

Business process map (BPMN 2.0): Create Purchase Order (2/2)

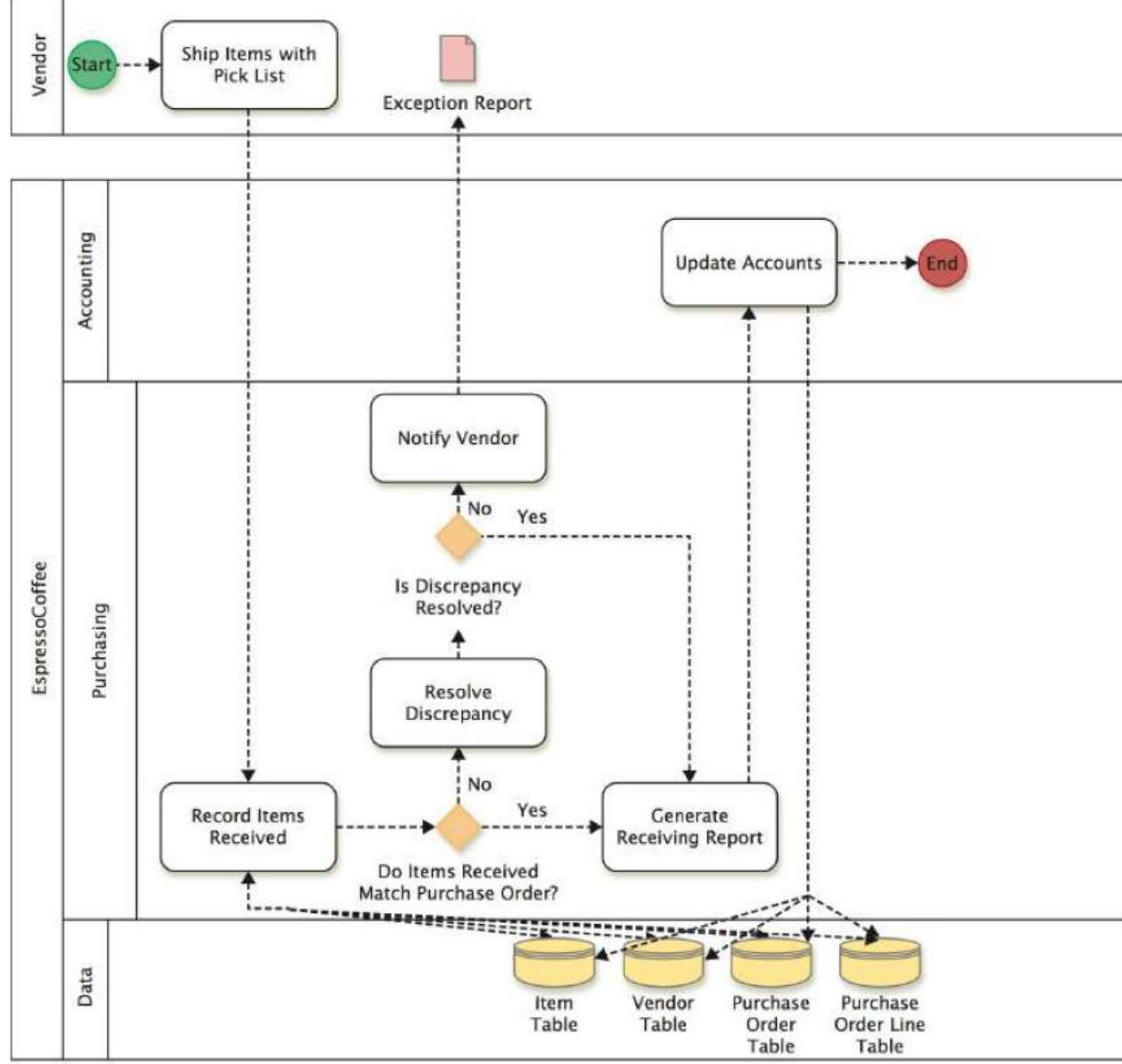


Flowchart: Receive items (1/2)

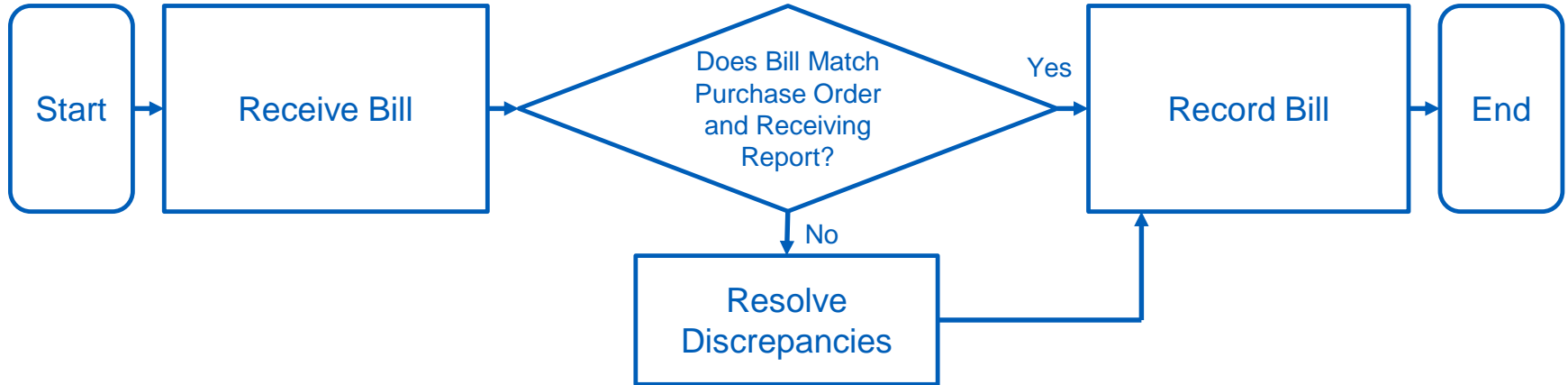


What are threats to the receive items process?

Business process map (BPMN 2.0): Receive items (2/2)

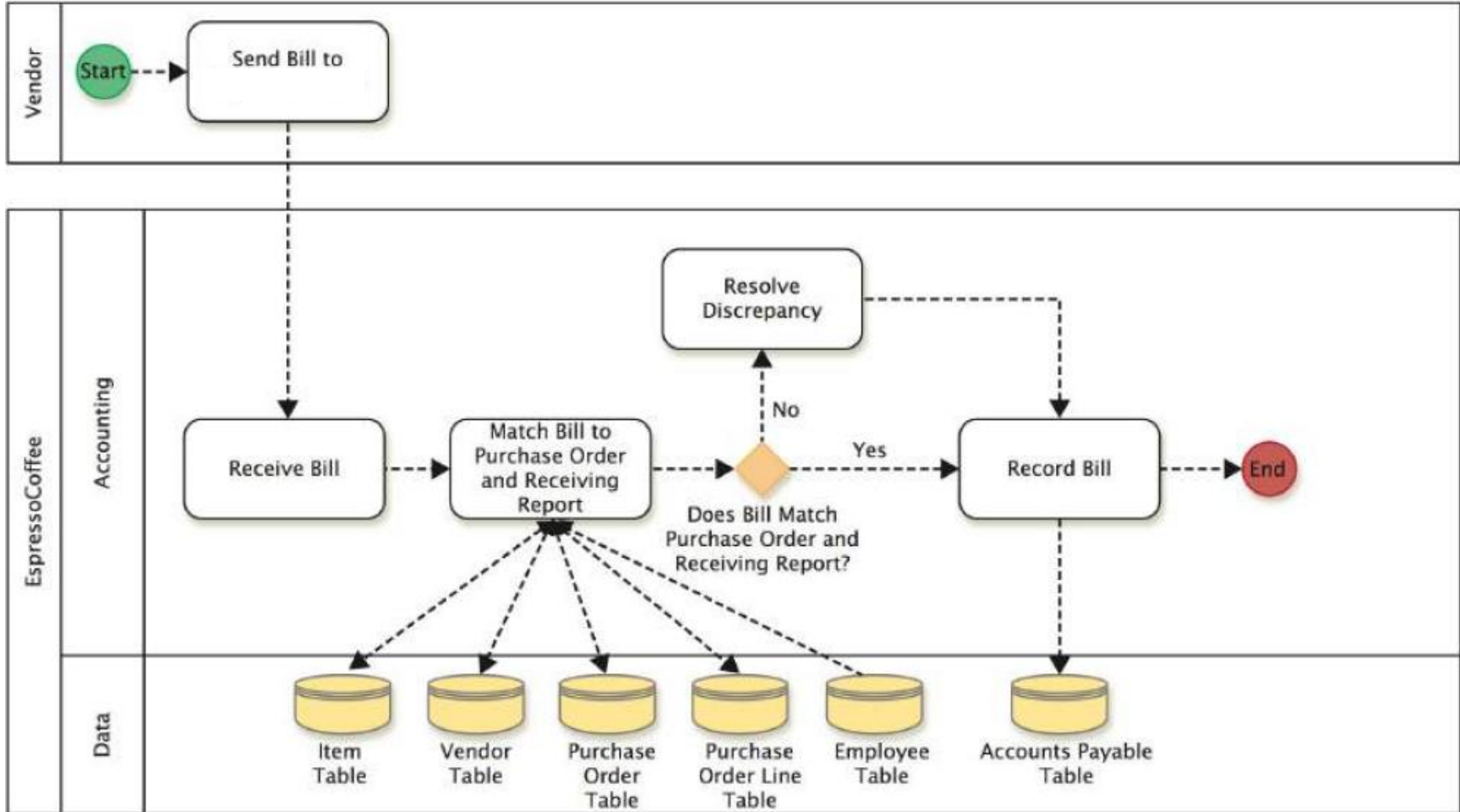


Flowchart: Approve invoices (1/2)

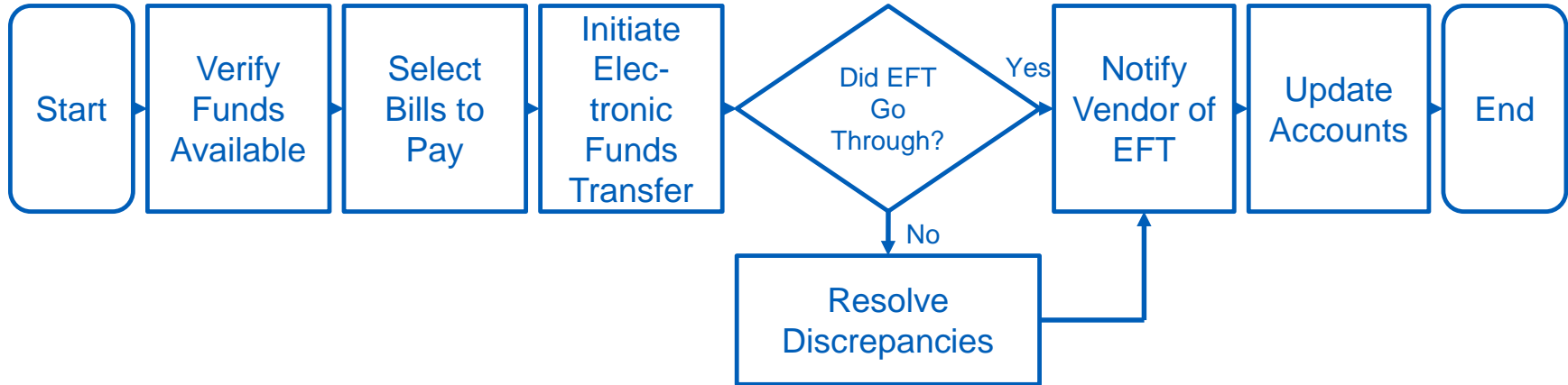


What are threats to approve invoices process?

Business process map (BPMN 2.0): Approve invoices (2/2)



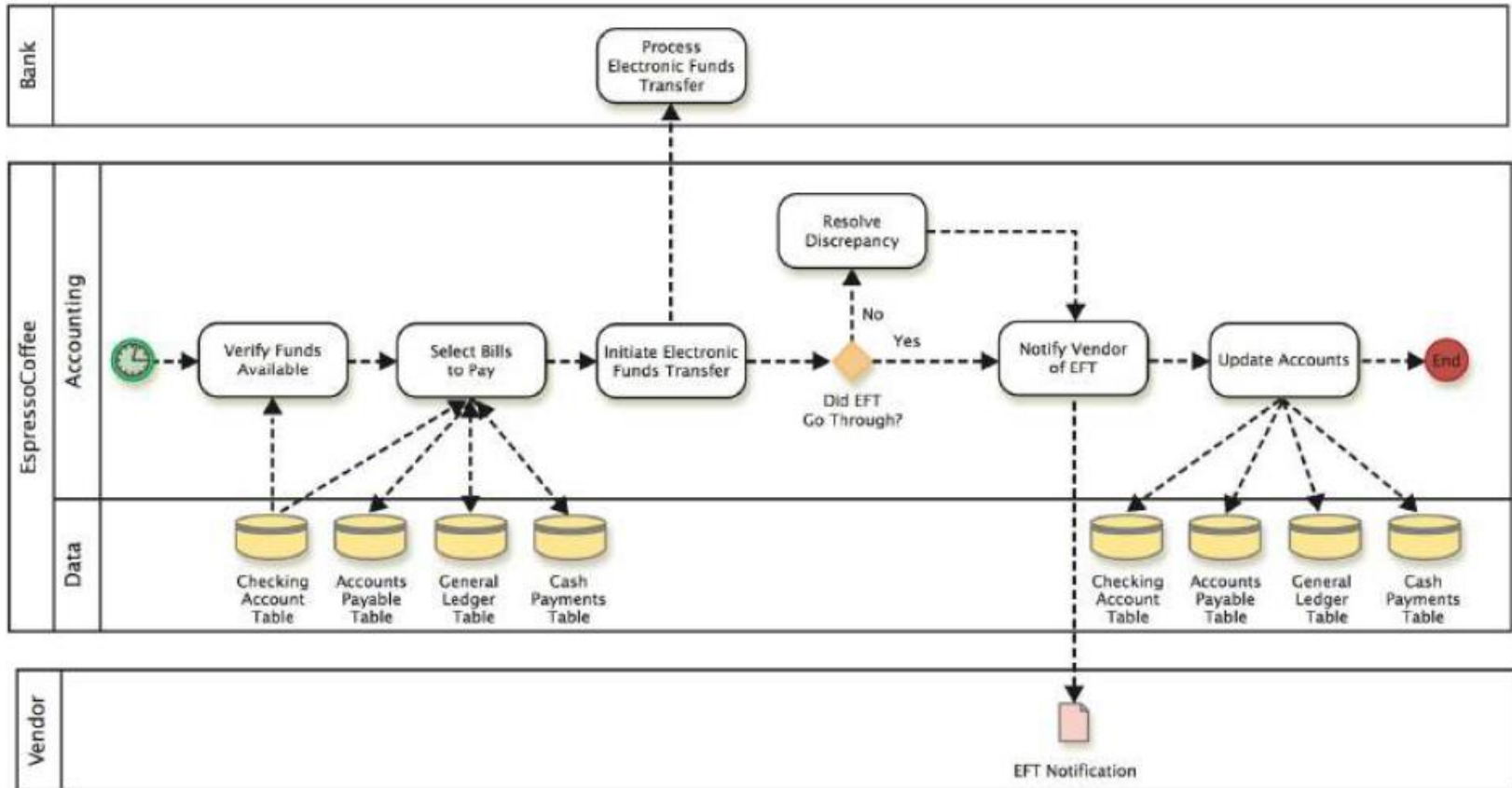
Flowchart: Pay Bills (1/2)



What are threats to pay bills process?

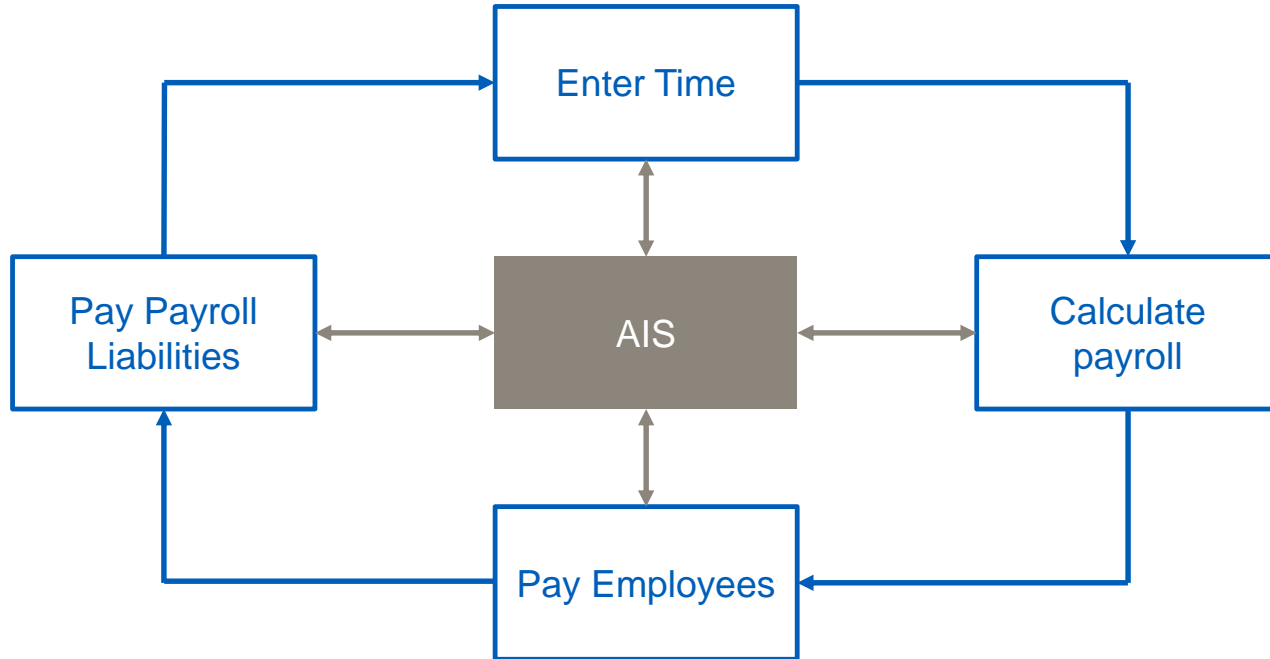
1. Failure to take discounts
2. Pay for items not received
3. Duplicate payments
4. Theft of cash
5. Check alteration
6. Cash flow problems

Business process map (BPMN 2.0): Approve invoices (2/2)



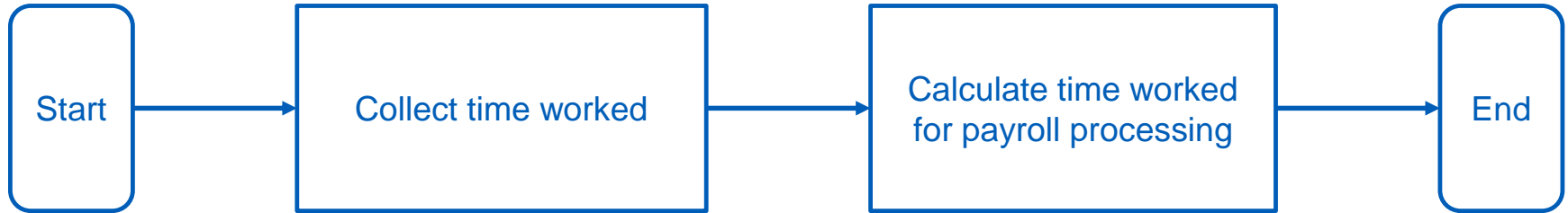
III. The Payroll Cycle

The payroll cycle

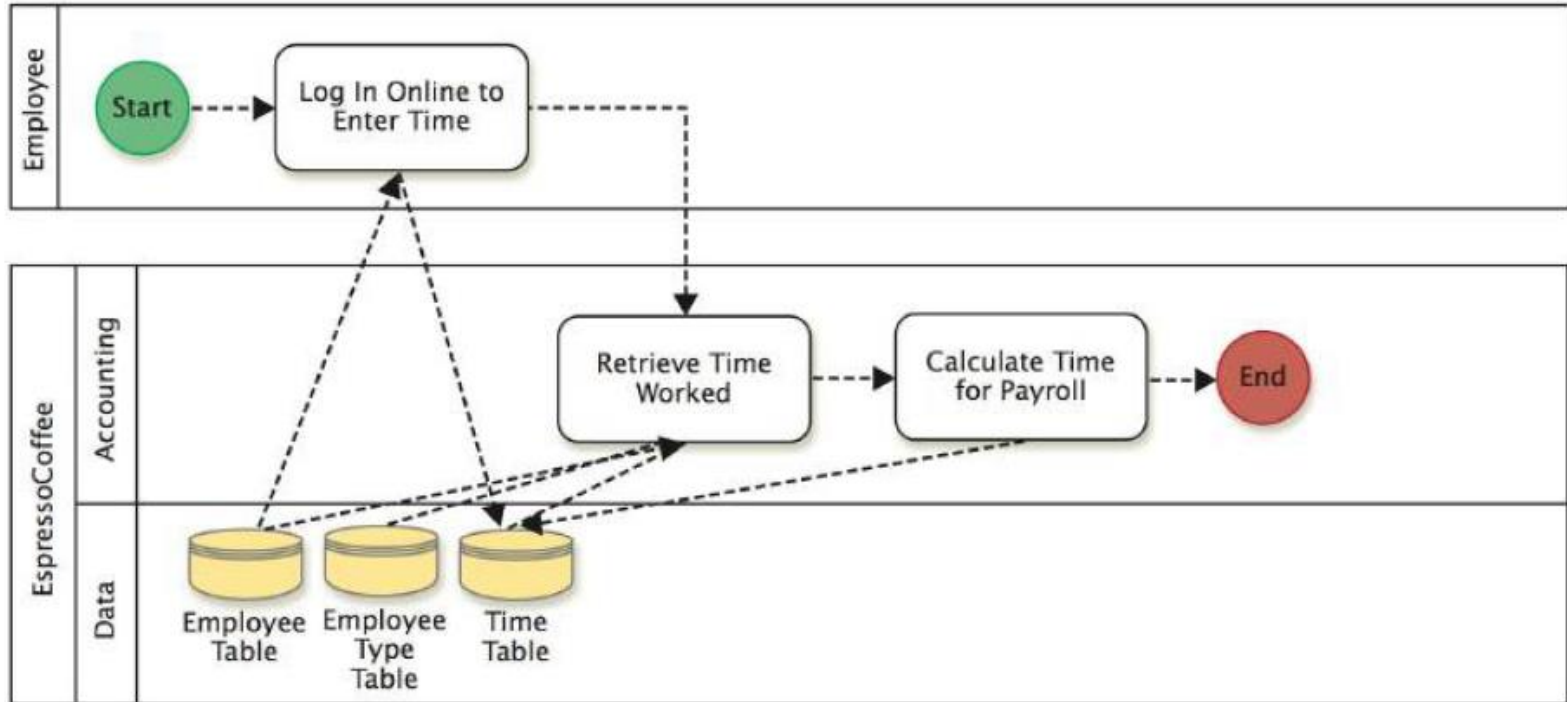


What are general threats to the payroll cycle?

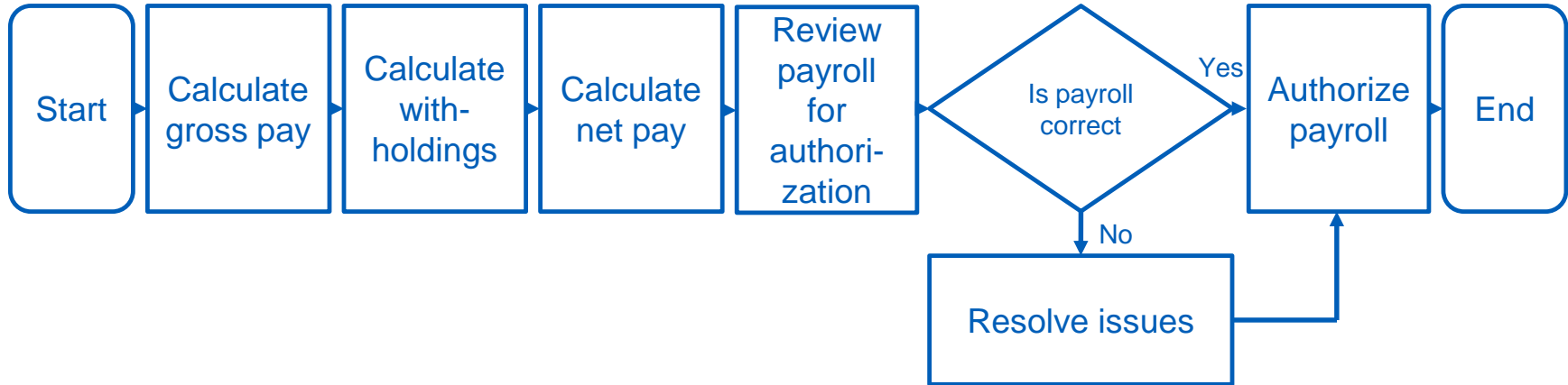
Flowchart: Enter time (1/2)



Business process map (BPMN 2.0): Enter time (2/2)

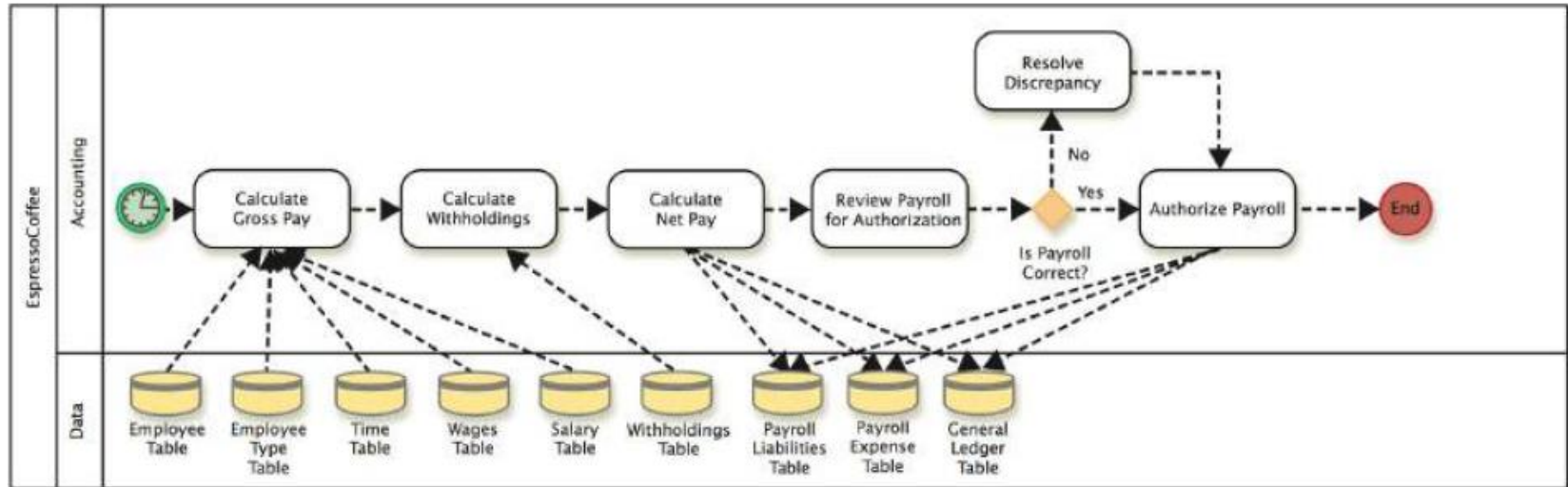


Flowchart: Calculate payroll (1/2)

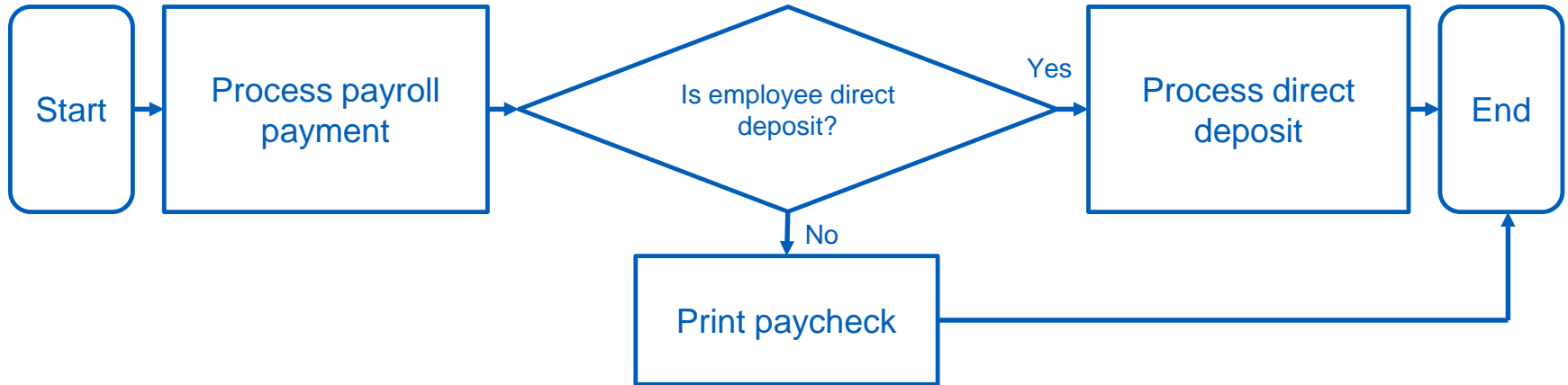


What are threats to the enter time and calculate payroll process?

Business process map (BPMN 2.0): Calculate payroll (2/2)

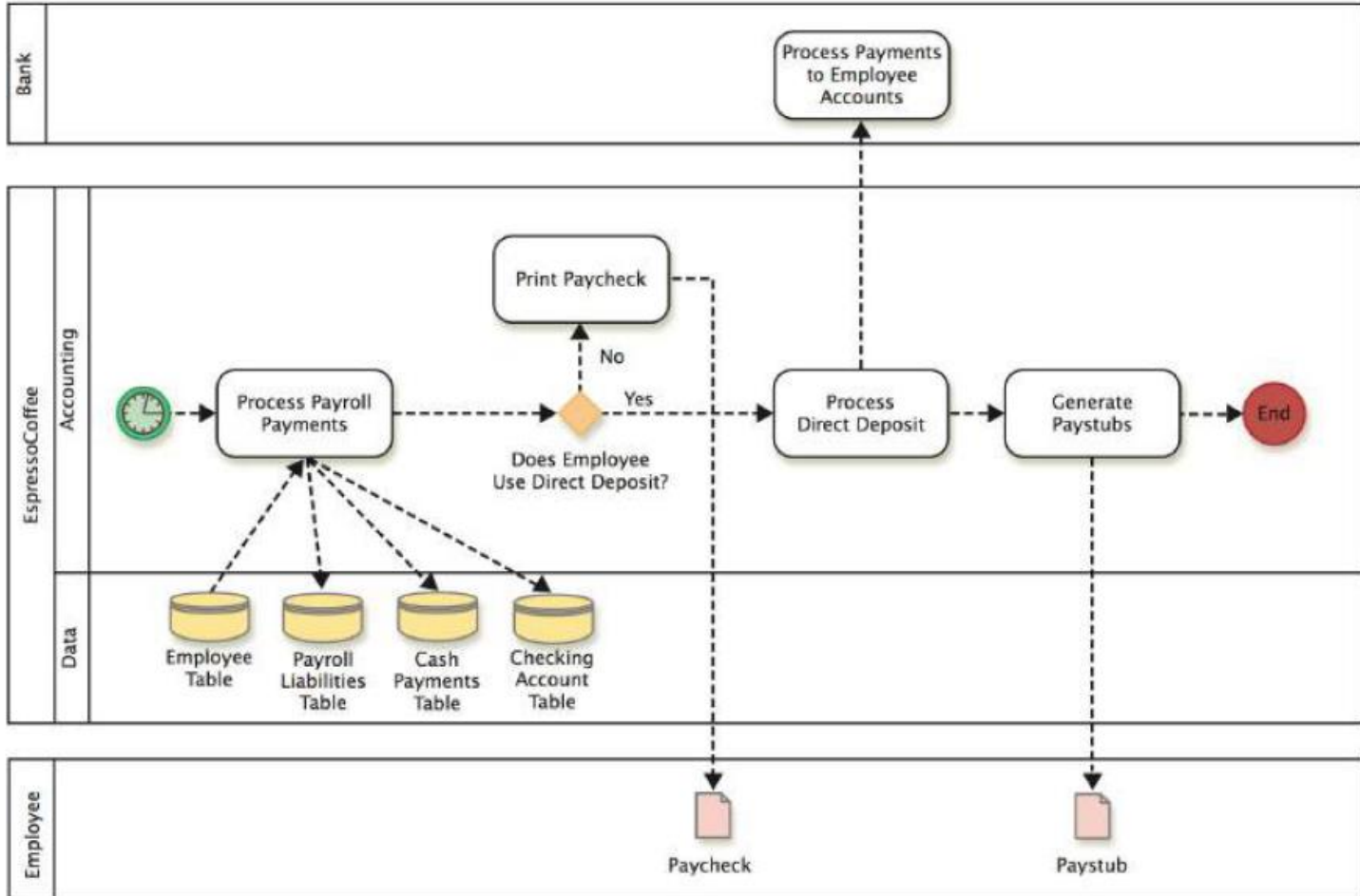


Flowchart: Pay employees (1/2)

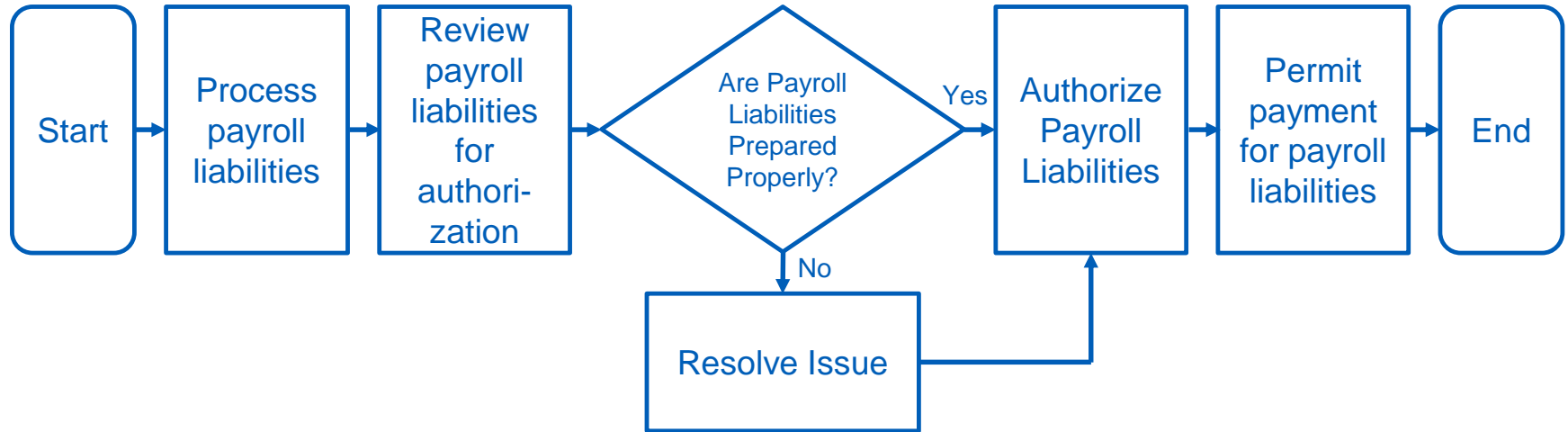


What are threats to the enter time and calculate payroll process?

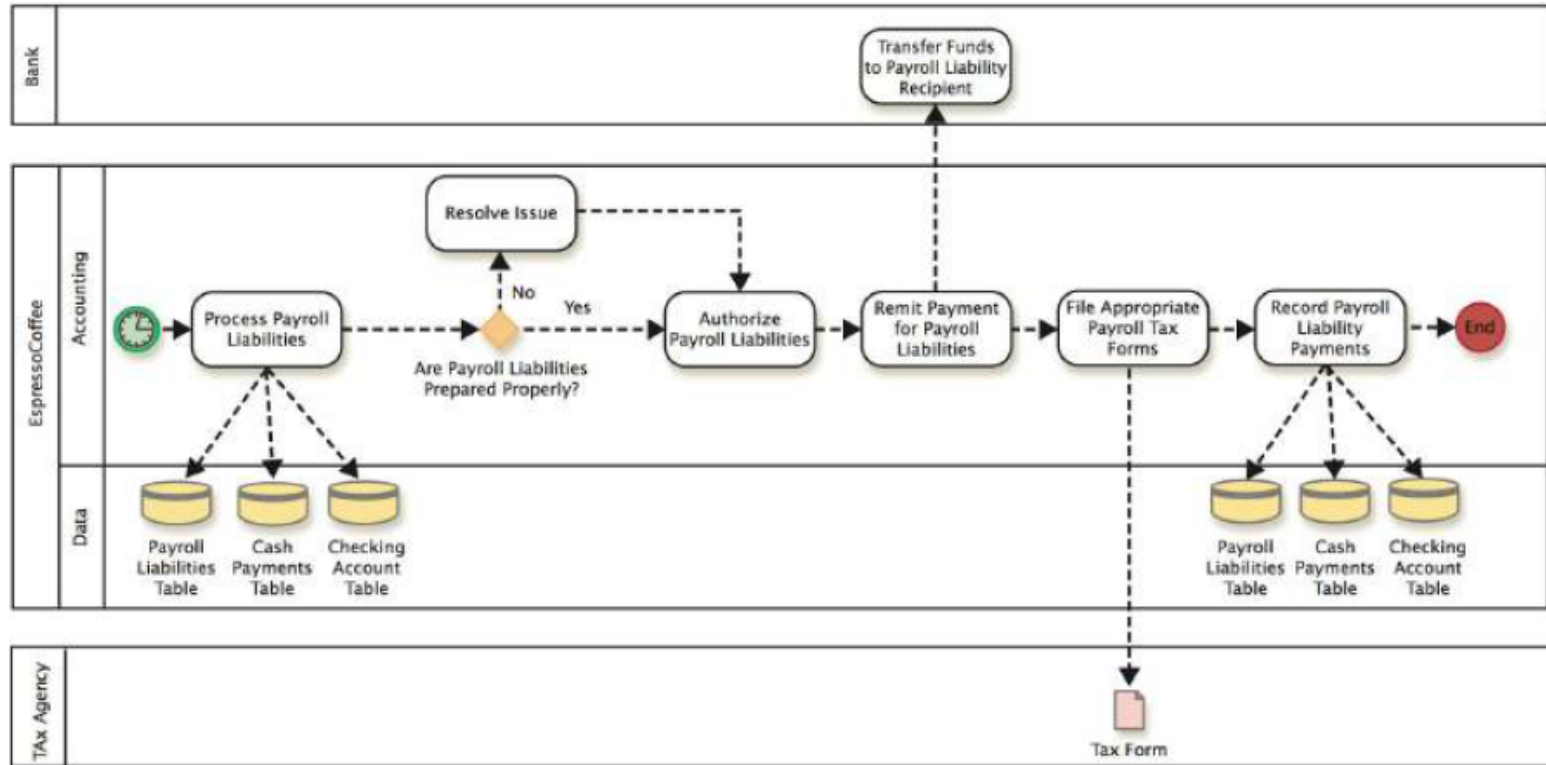
Business process map (BPMN 2.0): Pay employee (2/2)



Flowchart: Pay payroll liabilities (1/2)



Business process map (BPMN 2.0): Pay payroll liabilities (2/2)



IV. Case: Business Intelligence

In class case: Maintaining the KONE people flow

Thank you! Questions?